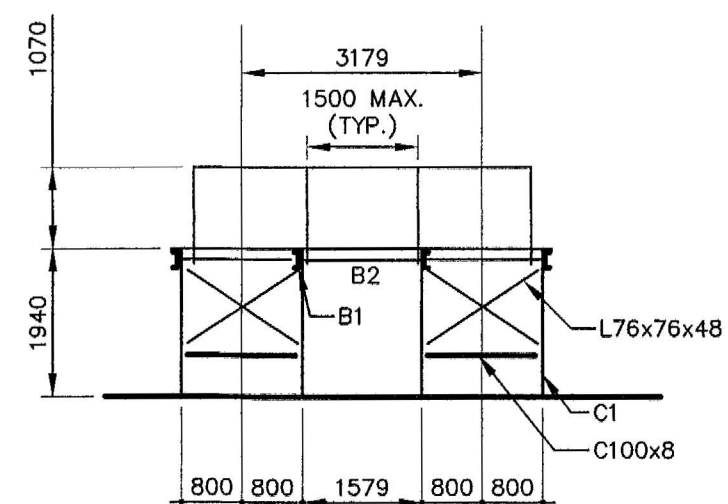


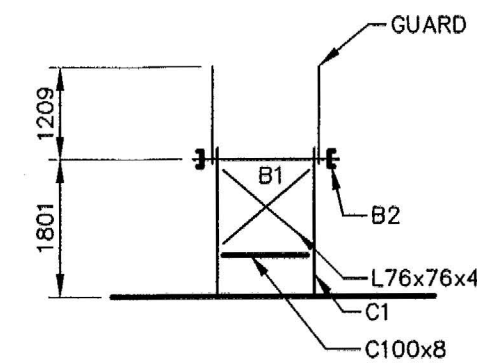
4
S8 SECTION AT TYP. CATWALK
SCALE 1:15



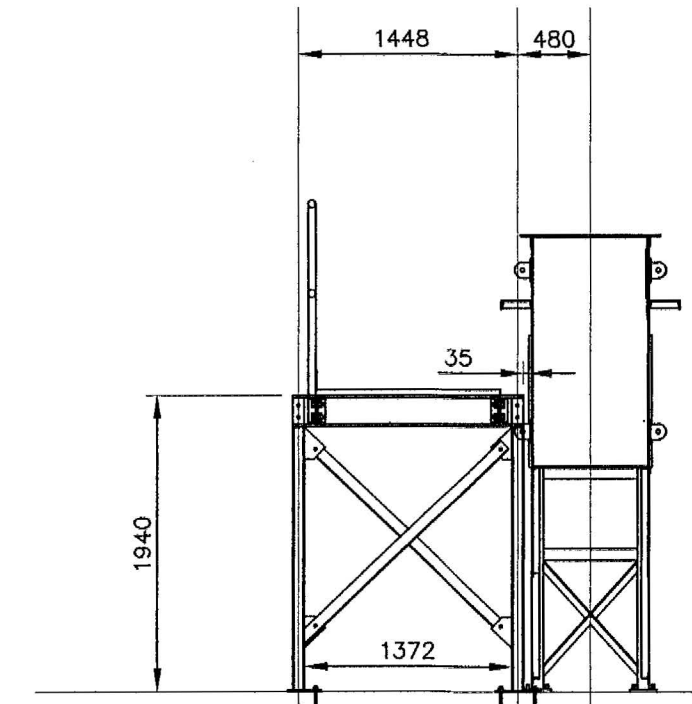
1
S8 CATWALK FRAMING SECTION
SCALE 1:100

CATWALK MEMBER SIZES

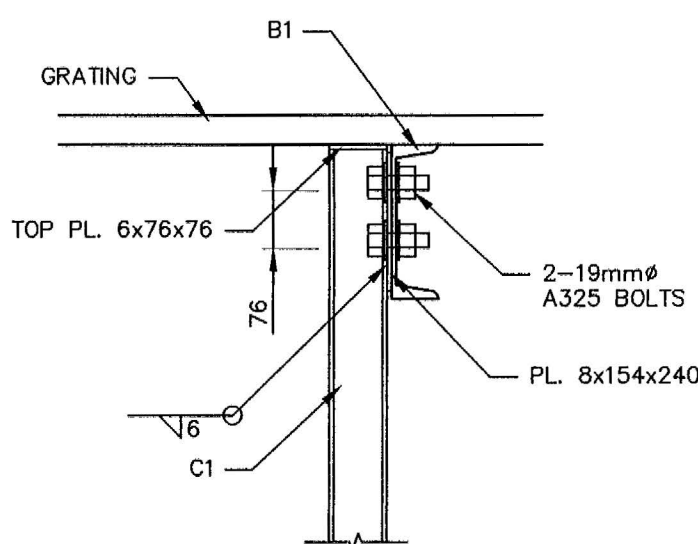
B1	C200 x 21
B2	C200 x 21
C1	76 x 76 x 6.4 HSS



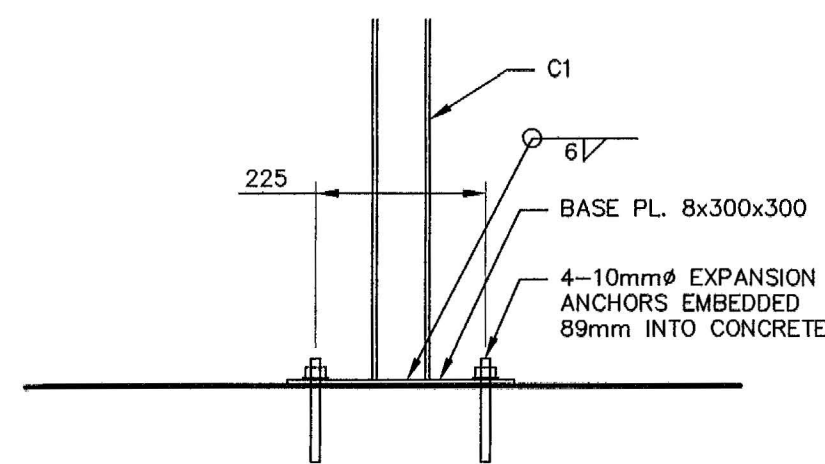
2
S8 CATWALK FRAMING SECTION
SCALE 1:100



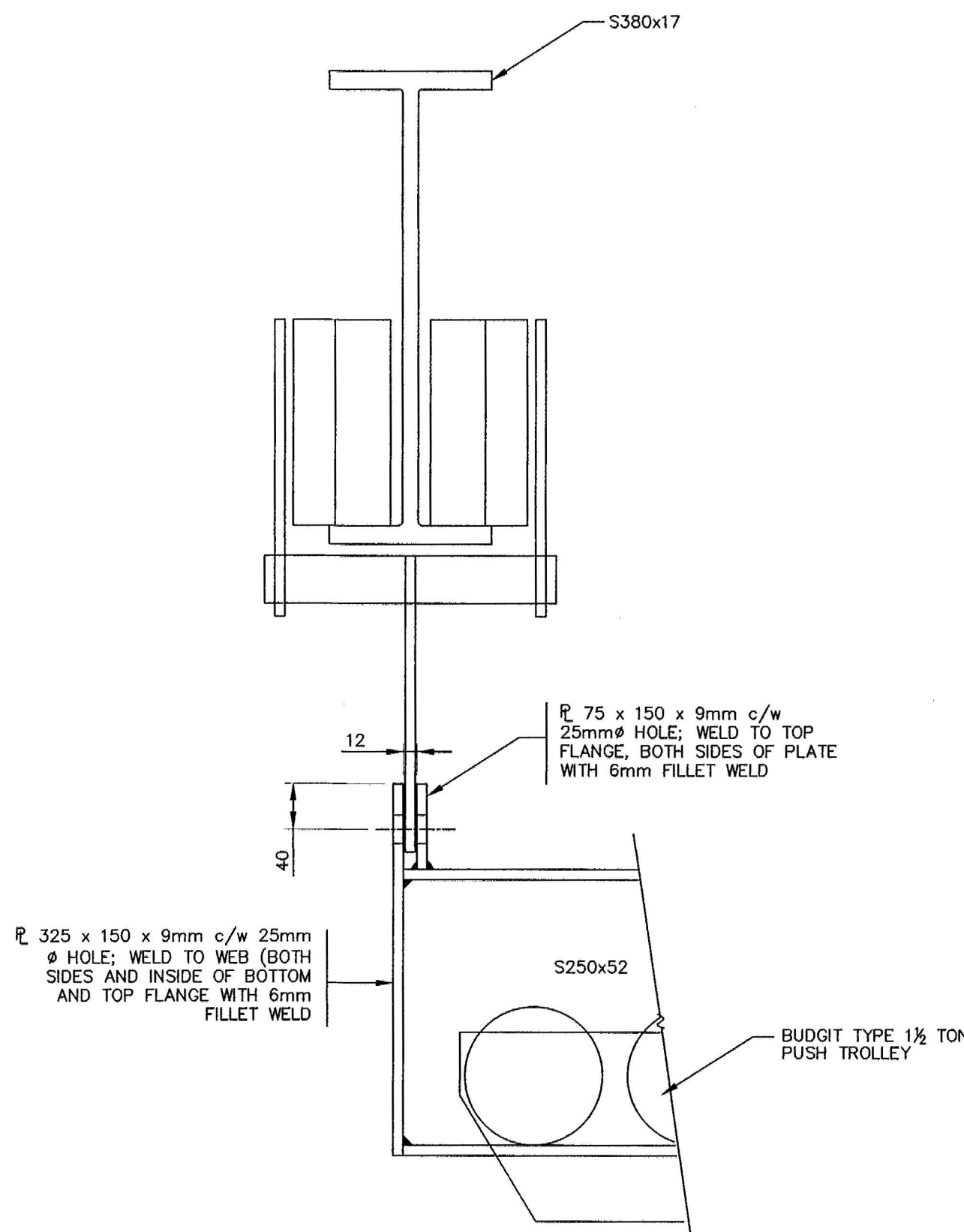
3
S8 TYPICAL SECTION AT CHANNEL CATWALK
SCALE 1:50



5
S8 SECTION
SCALE 1:10



6
S8 TYP. COLUMN CONNECTION
SCALE 1:10



6
S8 HOIST RAIL CONNECTION
SCALE 1:5

- This drawing is the exclusive property of Nuna Burnside and the reproduction of any part without prior written consent of this office is strictly prohibited.
- The contractor shall verify all dimensions, levels, and details on site and report any discrepancies or omissions to this office prior to construction.
- This drawing is to be read and understood in conjunction with all other plans and documents applicable to this project.
- Do not scale the drawings.

Issue / Revision	Date
1 ISSUED FOR 99% SUBMISSION	JANUARY 2013
2 ISSUED FOR TENDER	FEBRUARY 2013
3 REVISED AS PER ADDENDUM 1 TO 4 AND ISSUED FOR CONSTRUCTION	APRIL 2013

PERMIT TO PRACTICE
Nuna Burnside Engineering and Environmental Ltd.
Signature: *[Signature]*
Date: *Mar 27/13*
PERMIT NUMBER: P 535
The Association of Professional Engineers,
Geologists and Geophysicists of NWT/NU

Nuna Burnside

Nuna Burnside Engineering & Environmental LTD.
106B Scurfield Blvd., Winnipeg, Manitoba
telephone (204) 949-7110 fax (204) 949-7111
web www.neeganburnside.com

Client: **GOVERNMENT OF NUNAVUT
COMMUNITY & GOVERNMENT
SERVICES**
**RANKIN INLET
SEWAGE TREATMENT PLANT**

Drawing Title: **CATWALK
LOCATION AND DETAILS**

Drawn By W. WHITEDUCK	Checked By C. JONES	Drawing No. S8
Scale NTS	Project No. 300031281	