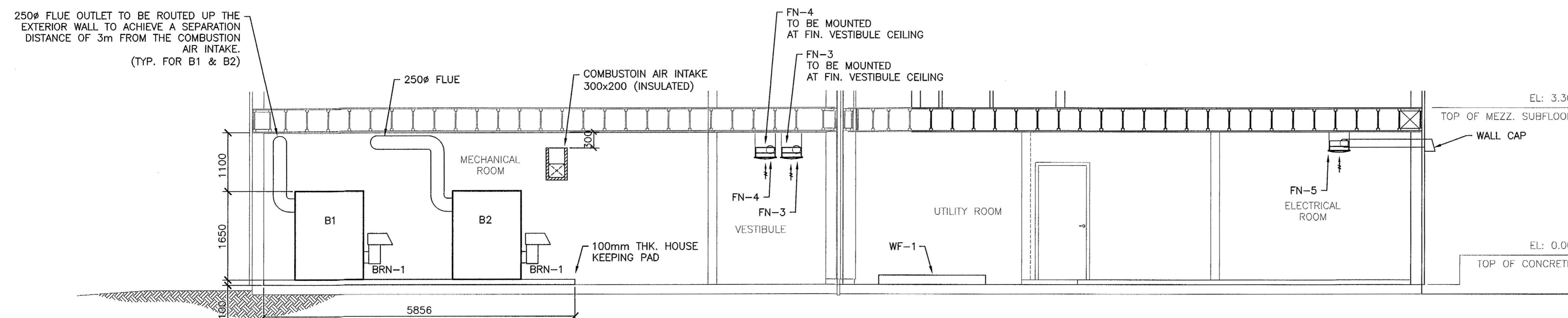


MECHANICAL - MEZZANINE FLOOR PLAN
1:50

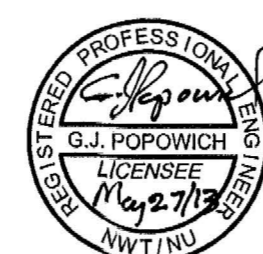


SECTION 1
1:50

1. This drawing is the exclusive property of Nuna Burnside and the reproduction of any part without prior written consent of this office is strictly prohibited.
2. The contractor shall verify all dimensions, levels, and datums on site and report any discrepancies or omissions to this office prior to construction.
3. This drawing is to be read and understood in conjunction with all other plans and documents applicable to this project.
4. Do not scale the drawings.

Issue / Revision	Date
1 ISSUED FOR 66% SUBMISSION	NOVEMBER 2012
2 ISSUED FOR 99% SUBMISSION	JANUARY 2013
3 ISSUED FOR TENDER	FEBRUARY 2013
4 REVISED AS PER ADDENDUM 1 TO 4 AND ISSUED FOR CONSTRUCTION	APRIL 2013

PERMIT TO PRACTICE
Nuna Burnside Engineering and Environmental Ltd.
Signature: *[Signature]*
Date: May 27/13
PERMIT NUMBER: P 535
The Association of Professional Engineers,
Geologists and Geophysicists of NWT/NU



NUNA BURNSIDE
Nuna Burnside Engineering & Environmental LTD.
106B Scurfield Blvd., Winnipeg, Manitoba
telephone (204) 949-7110 fax (204) 949-7111
web www.neeganburnside.com

Client
GOVERNMENT OF NUNAVUT
COMMUNITY & GOVERNMENT
SERVICES
RANKIN INLET
SEWAGE TREATMENT PLANT

Drawing Title		
SECOND FLOOR MECHANICAL HVAC LAYOUT		
Drawn By A.H.	Checked By D.Mack.	Drawing No.
Scale 1:50	Project No. 300031281	M-3