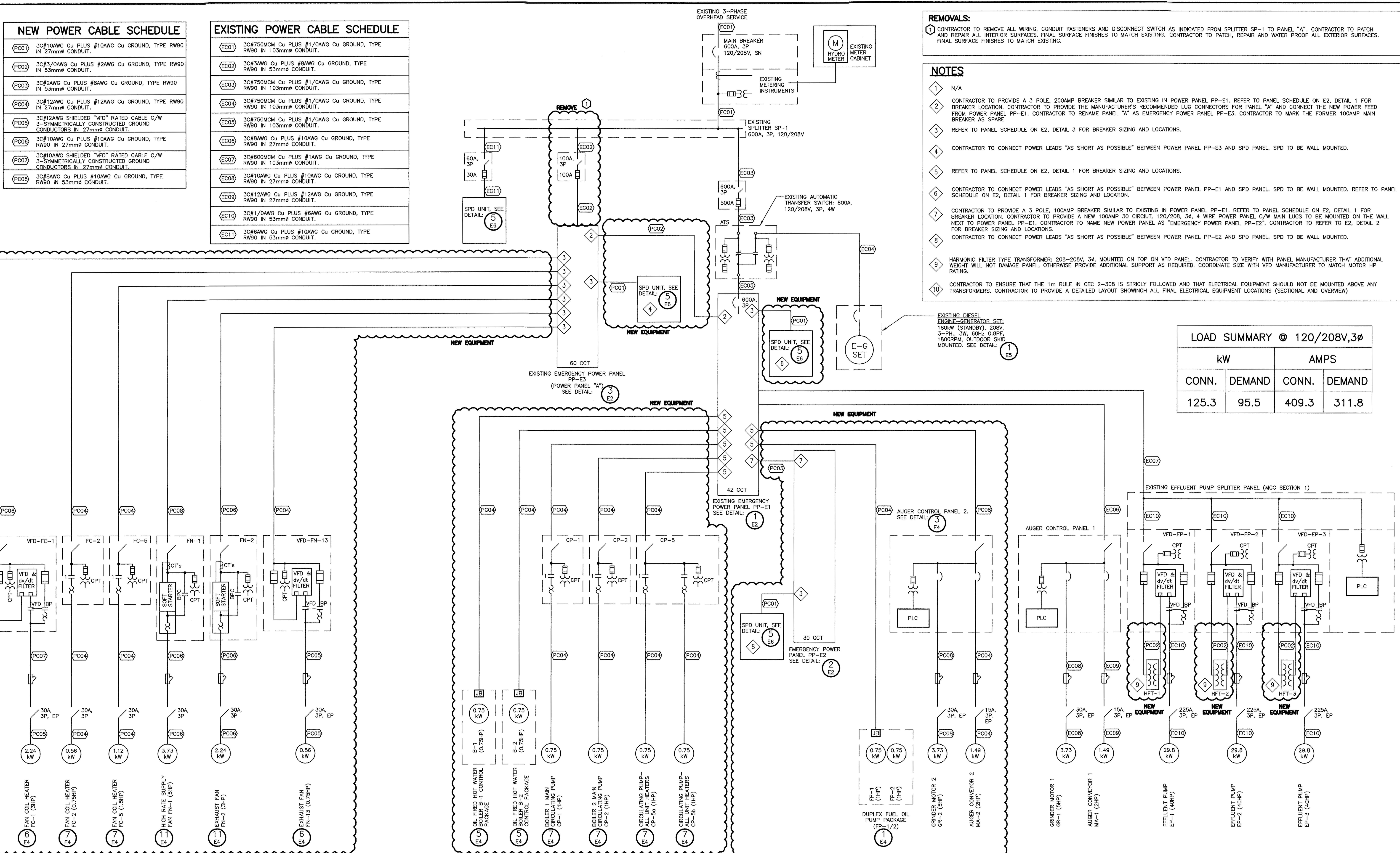


NEW POWER CABLE SCHEDULE	
PC01	3C#10AWG Cu PLUS #10AWG Cu GROUND, TYPE RW90 IN 27mm <sup>2</sup> CONDUIT.
PC02	3C#3/0AWG Cu PLUS #2AWG Cu GROUND, TYPE RW90 IN 53mm <sup>2</sup> CONDUIT.
PC03	3C#2AWG Cu PLUS #8AWG Cu GROUND, TYPE RW90 IN 53mm <sup>2</sup> CONDUIT.
PC04	3C#12AWG Cu PLUS #12AWG Cu GROUND, TYPE RW90 IN 27mm <sup>2</sup> CONDUIT.
PC05	3C#12AWG SHIELDED "VFD" RATED CABLE C/W 3-SYMMETRICALLY CONSTRUCTED GROUND CONDUCTORS IN 27mm <sup>2</sup> CONDUIT.
PC06	3C#10AWG Cu PLUS #10AWG Cu GROUND, TYPE RW90 IN 27mm <sup>2</sup> CONDUIT.
PC07	3C#10AWG SHIELDED "VFD" RATED CABLE C/W 3-SYMMETRICALLY CONSTRUCTED GROUND CONDUCTORS IN 27mm <sup>2</sup> CONDUIT.
PC08	3C#8AWG Cu PLUS #10AWG Cu GROUND, TYPE RW90 IN 53mm <sup>2</sup> CONDUIT.

EXISTING POWER CABLE SCHEDULE	
EC01	3C#750MCM Cu PLUS #1/0AWG Cu GROUND, TYPE RW90 IN 103mm <sup>2</sup> CONDUIT.
EC02	3C#3AWG Cu PLUS #8AWG Cu GROUND, TYPE RW90 IN 53mm <sup>2</sup> CONDUIT.
EC03	3C#750MCM Cu PLUS #1/0AWG Cu GROUND, TYPE RW90 IN 103mm <sup>2</sup> CONDUIT.
EC04	3C#750MCM Cu PLUS #1/0AWG Cu GROUND, TYPE RW90 IN 103mm <sup>2</sup> CONDUIT.
EC05	3C#750MCM Cu PLUS #1/0AWG Cu GROUND, TYPE RW90 IN 103mm <sup>2</sup> CONDUIT.
EC06	3C#8AWG Cu PLUS #10AWG Cu GROUND, TYPE RW90 IN 27mm <sup>2</sup> CONDUIT.
EC07	3C#600MCM Cu PLUS #1AWG Cu GROUND, TYPE RW90 IN 103mm <sup>2</sup> CONDUIT.
EC08	3C#10AWG Cu PLUS #10AWG Cu GROUND, TYPE RW90 IN 27mm <sup>2</sup> CONDUIT.
EC09	3C#12AWG Cu PLUS #12AWG Cu GROUND, TYPE RW90 IN 27mm <sup>2</sup> CONDUIT.
EC10	3C#1/0AWG Cu PLUS #8AWG Cu GROUND, TYPE RW90 IN 53mm <sup>2</sup> CONDUIT.
EC11	3C#6AWG Cu PLUS #10AWG Cu GROUND, TYPE RW90 IN 53mm <sup>2</sup> CONDUIT.



**1 ELECTRICAL SINGLE LINE DIAGRAM**

NTS

1. This drawing is the exclusive property of Runge & Associates Inc. and the reproduction of any part without prior written consent of this office is strictly prohibited.

2. The contractor shall verify all dimensions, levels, and datum on site and report any discrepancies or omissions to this office prior to construction.

3. This drawing is to be read and understood in conjunction with all other plans and documents applicable to this project.

4. Drawing revision must be noted "Issued For Construction" before any work commences.

Issue / Revision	Date dd/mm/yyyy
1 ISSUED FOR 66% SUBMISSION	06/09/2012
2 ISSUED FOR 99% SUBMISSION	JANUARY 2013
3 ISSUED FOR TENDER	FEBRUARY 2013
4 REVISED AS PER ADDENDUM 1 TO 4 AND ISSUED FOR CONSTRUCTION	APRIL 2013

**PERMIT TO PRACTICE**

Runge & Associates Inc.

Signature: *[Signature]*

Date: APRIL 22, 2013

**PERMIT NUMBER: P617**

The Association of Professional Engineers, Geologists and Geophysicists of NWTNU

**runge & associates inc. ENGINEERS**

864 Hurontario Street  
P.O. Box 387  
Collingwood, ON, L9Y 3Z7

b: (705) 446-3590  
f: (705) 446-3588  
www.ralengineers.co

**BURNSIDE**

Nuna Burnside Engineering & environmental LTD.

106B Scurfield Blvd., Winnipeg, Manitoba  
telephone (204) 949-7110 fax (204) 949-7111  
web www.neeganburnside.com

Client: **GOVERNMENT OF NUNAVUT COMMUNITY & GOVERNMENT SERVICES**

**RANKIN INLET**

**SEWAGE TREATMENT PLANT**

Drawing Title: **ELECTRICAL SINGLE LINE DIAGRAM**

Drawn By	Checked By	Drawing No.
T.T.	S.R.T.	E3

Scale: AS SHOWN

Project No: 300031281