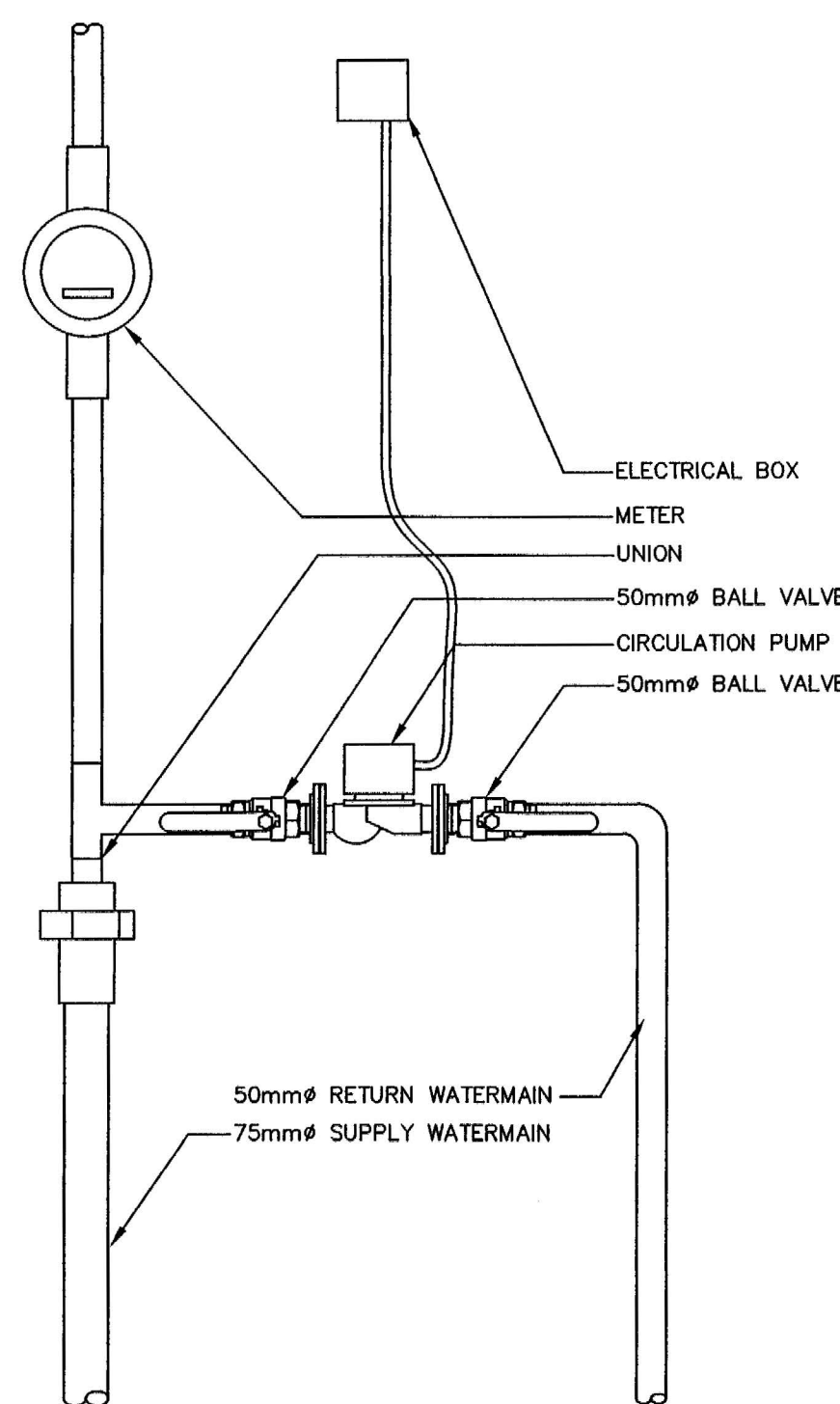


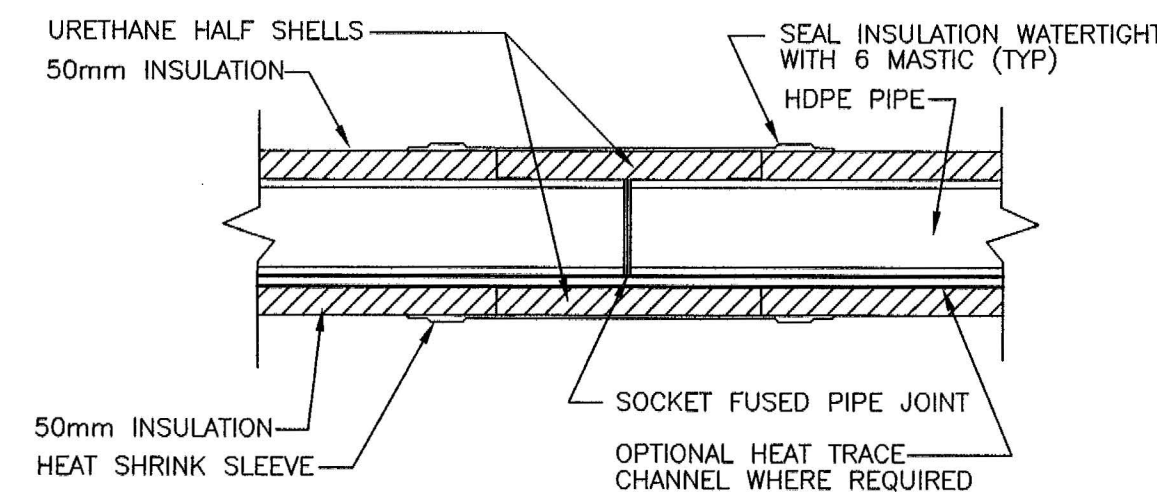
**SITE GRADING PLAN**  
1:50

**NOTES:**

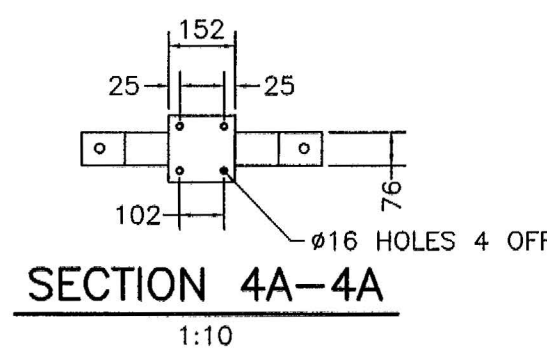
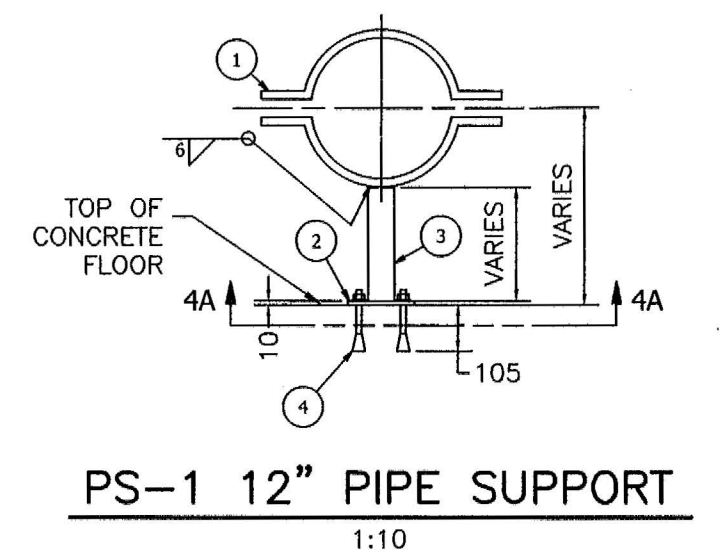
- CONTRACTOR TO CONFORM TO ALL FEDERAL, TERRITORIAL AND LOCAL CODES, STANDARDS AND REGULATIONS.
- CONTRACTOR SHALL NOTIFY THE AUTHORITY HAVING JURISDICTION AND OBTAIN ALL APPROVALS, PERMITS AND PAY ALL FEES.
- THE CONTRACTOR SHALL TAKE ALL REASONABLE PRECAUTIONS TO AVOID CAUSING ANY DAMAGE TO EXISTING INFRASTRUCTURE AND PROPERTY. THE CONTRACTOR SHALL BE RESPONSIBLE FOR ANY DAMAGE TO EXISTING INFRASTRUCTURE AND PROPERTY THAT ARE ATTRIBUTABLE TO HIS ACTIONS. ANY DAMAGE SHALL BE REPAIRED BY THE CONTRACTOR AT HIS OWN EXPENSE TO A MINIMUM PRE-CONSTRUCTION CONDITION.
- EXACT LOCATION OF UNDERGROUND SERVICES AND UTILITIES ARE APPROX. CONTRACTOR IS RESPONSIBLE FOR COORDINATING LOCATES WITH UTILITIES AND VERIFYING BY EXPOSING PRIOR TO CONSTRUCTION.
- BEDDING & BACKFILL TO SPECIFICATIONS WITH MINIMUM OF 150mm DEPTH BELOW PIPE INVERT.
- CONTRACTOR TO PROVIDE AS-BUILT DRAWING TO ENGINEER ONCE CONSTRUCTION COMPLETED.
- SEE TENDER DOCUMENTS FOR SUBSURFACE INVESTIGATION REPORT.
- BEDDING SAND IS TO BE COMPACTED UNDER WATER, SEWER AND FORCEMAIN MAINS, ALONG SIDES OF PIPE WHEN HALF COVERED. SAND TO BE COMPACTED IN MINIMUM THICKNESS OF 150mm LAYERS.
- CONTRACTOR IS TO CONFIRM THE INVERT ELEVATION OF THE EXISTING CHAMBERS AND NOTIFY THE ENGINEER OF ANY DISCREPANCY GREATER THAN 0.02m.
- TEMPORARY SUPPORT TO BE PROVIDED FOR ALL HYDRO POLES AFFECTED DURING CONSTRUCTION.
- DRIVEWAYS, ROADS, BOULEVARDS, DITCHES ETC. AFFECTED BY CONSTRUCTION TO BE REINSTATED TO ORIGINAL CONDITION.
- EXISTING WATER LINES ARE SHOWN IN APPROXIMATE LOCATION. CONTRACTOR IS RESPONSIBLE FOR ADJUSTING ALIGNMENT TO CONNECT TO PROPOSED LOCATION AT SEWAGE TREATMENT PLANT PROPOSED ADDITION.



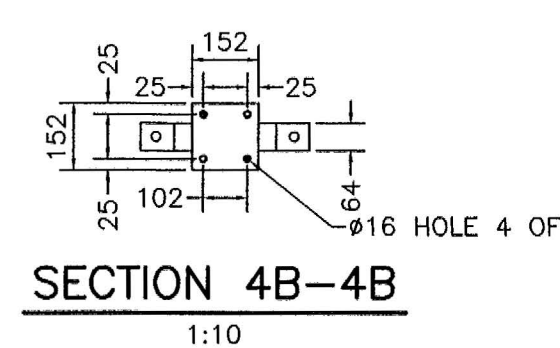
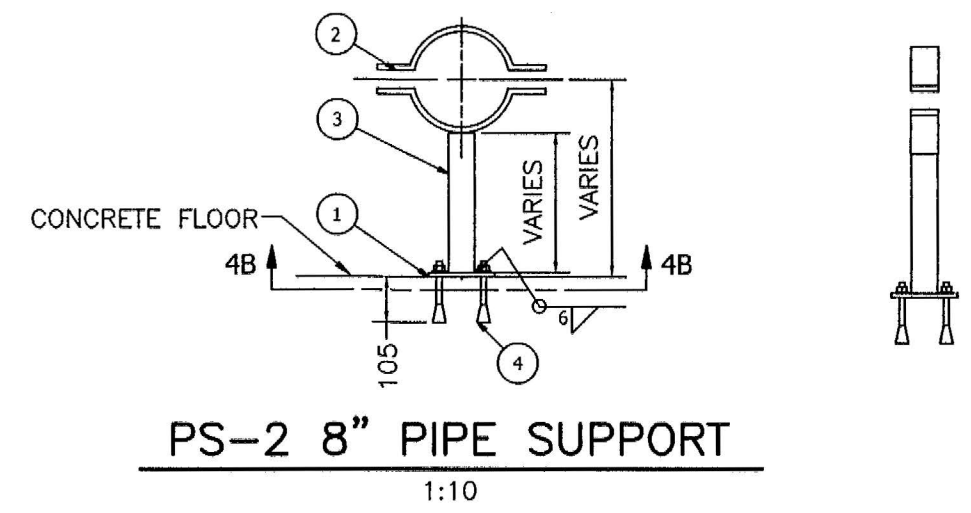
**1 WATER PIPE HEADER**  
SW2  
NTS



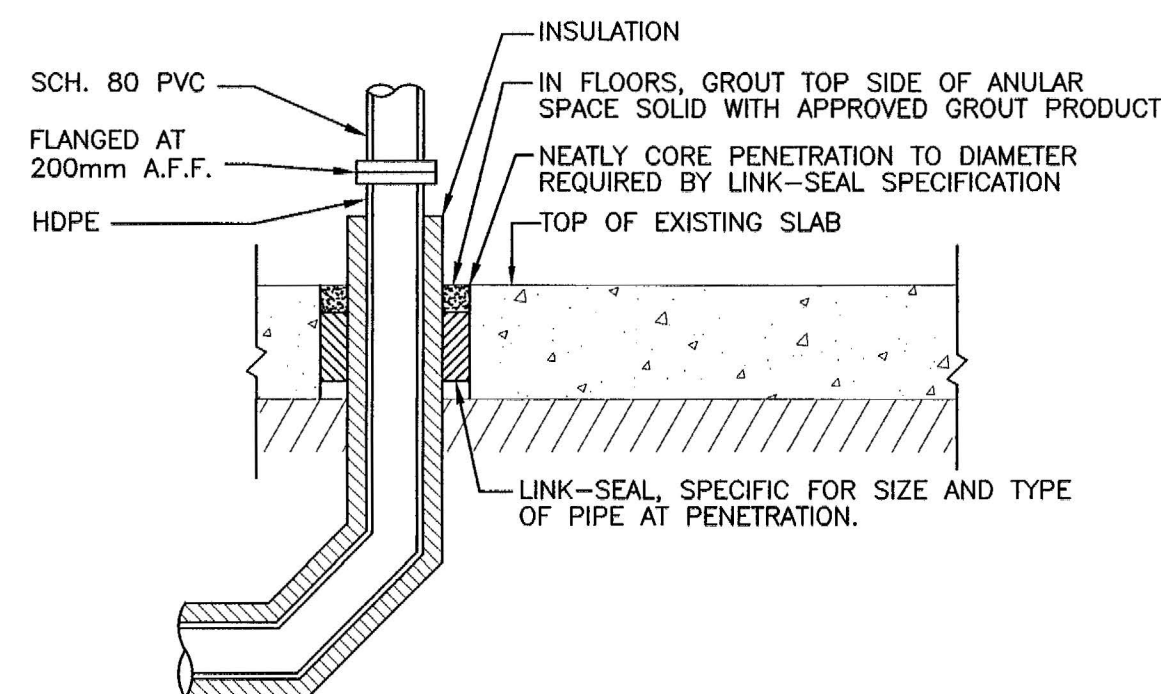
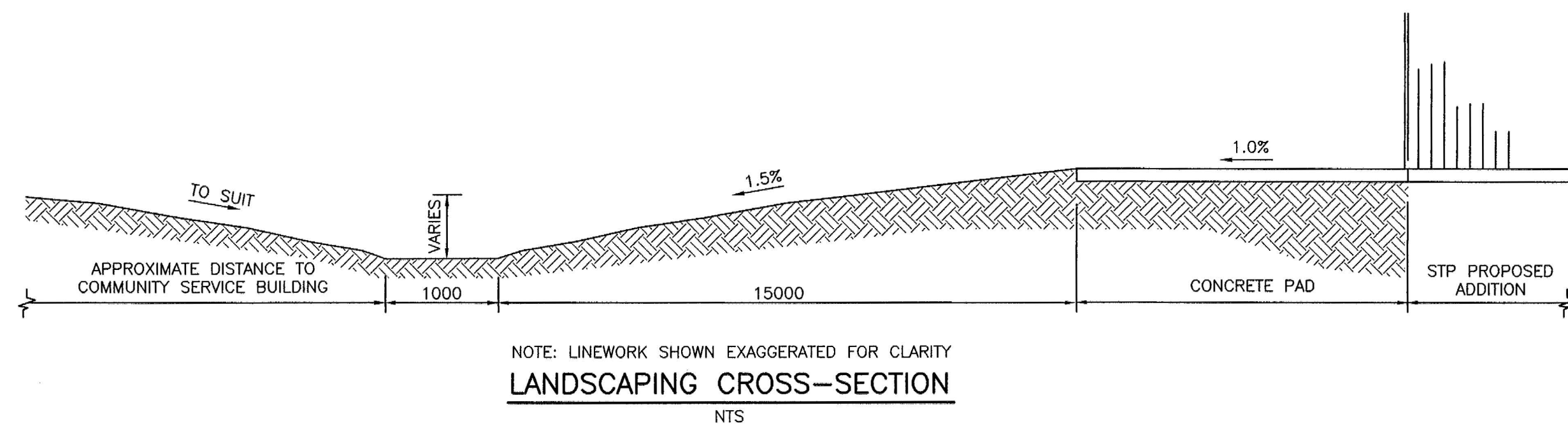
**PIPE JOINING DETAIL (TYP)**  
NTS



PARTS LIST			
ITEM	QUANTITY	PART NUMBER	DESCRIPTION
1	2	PIPE CLAMP, 2-BOLT MYATT FIG 134, 12in	
2	6in	AISC - 6X3/8 - 6	FLAT BAR STEEL
3	10.217in	ASTM A 53/A 53M PIPE 2 - SCHEDULE 40 - 10.2165354330709	PIPE
4	4	TRUBOLT WEDGE ANCHOR, STEEL, GALV., .5in X 5.5in LONG	

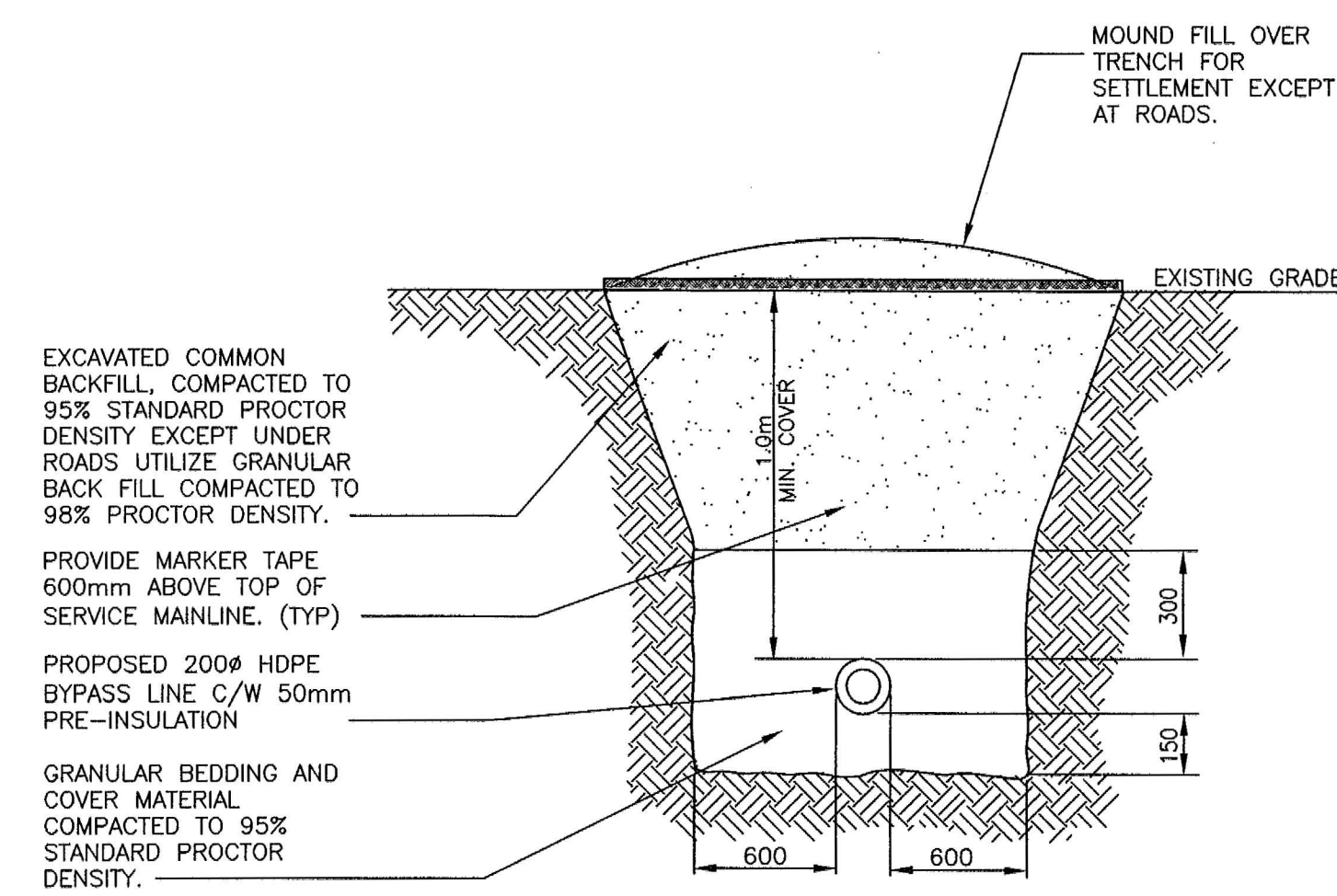


PARTS LIST			
ITEM	QUANTITY	PART NUMBER	DESCRIPTION
1	6in	AISC - 6X3/8 - 6	
2	2	PIPE CLAMP, 2-BOLT MYATT FIG 134, 8in	FLAT BAR STEEL
3	12.52in	ASTM A 53/A 53M PIPE 2 - SCHEDULE 40 - 12.5196850393701	PIPE
4	4	TRUBOLT WEDGE ANCHOR, STEEL, GALV., .5in X 5.5in LONG	



- NOTES:**
- PROVIDE DOUBLE LINK SEALS AT WALL OR FLOOR SLAB THICKNESSES LARGER THAN 300mm.

**FLOOR PIPE PENETRATION (TYP)**  
NTS

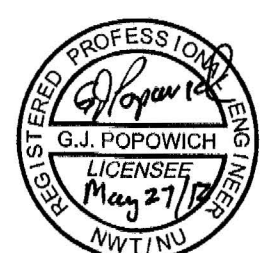


**MAINLINE PIPE TRENCH DETAIL SINGLE PIPE (TYP)**  
NTS

- This drawing is the exclusive property of Nuna Burnside and the reproduction of any part without prior written consent of this office is strictly prohibited.
- The contractor shall verify all dimensions, levels, and datums on site and report any discrepancies or omissions to this office prior to construction.
- This drawing is to be read and understood in conjunction with all other plans and documents applicable to this project.
- Do not scale the drawings.

Issue / Revision	Date
1 ISSUED FOR 99% SUBMISSION	JANUARY 2013
2 ISSUED FOR TENDER	FEBRUARY 2013
3 REVISED AS PER ADDENDUM 1 TO 4 AND ISSUED FOR CONSTRUCTION	APRIL 2013

**PERMIT TO PRACTICE**  
Nuna Burnside Engineering and Environmental Ltd.  
Signature: *[Signature]*  
Date: *May 27/13*  
**PERMIT NUMBER: P 535**  
The Association of Professional Engineers, Geologists and Geophysicists of NWTNU



SEWERMAIN	HYDRO
HYDRANT VALVE	M.T.S.
FORCEMAIN	CONCRETE
WATERMAIN	ASPHALT
HEAT RECOVERY SYSTEM LINE	TEST HOLE
ELEVATIONS	CURB STOP
FLOW DIRECTION	C.B. LEAD
BENCHMARK	SIDEWALK
CULVERT	PROPERTY CORNER
HYDRO POLE	BOLLARD
EXISTING	LEGEND - PLAN
PROPOSED	PROPOSED

**BURNSIDE**  
Nuna Burnside Engineering & Environmental LTD.  
106B Scurfield Blvd., Winnipeg, Manitoba  
telephone (204) 949-7110 fax (204) 949-7111  
web www.neeganburnside.com

Client  
**GOVERNMENT OF NUNAVUT COMMUNITY & GOVERNMENT SERVICES**  
RANKIN INLET  
SEWAGE TREATMENT PLANT

Drawing Title  
**SEWER AND WATER SITE SERVICES DETAILS AND NOTES**

Drawn By  
C. GERUS  
Scale  
AS NOTED

Checked By  
G. POPOWICH  
Project No.  
300031281

Drawing No.  
**SW-2**