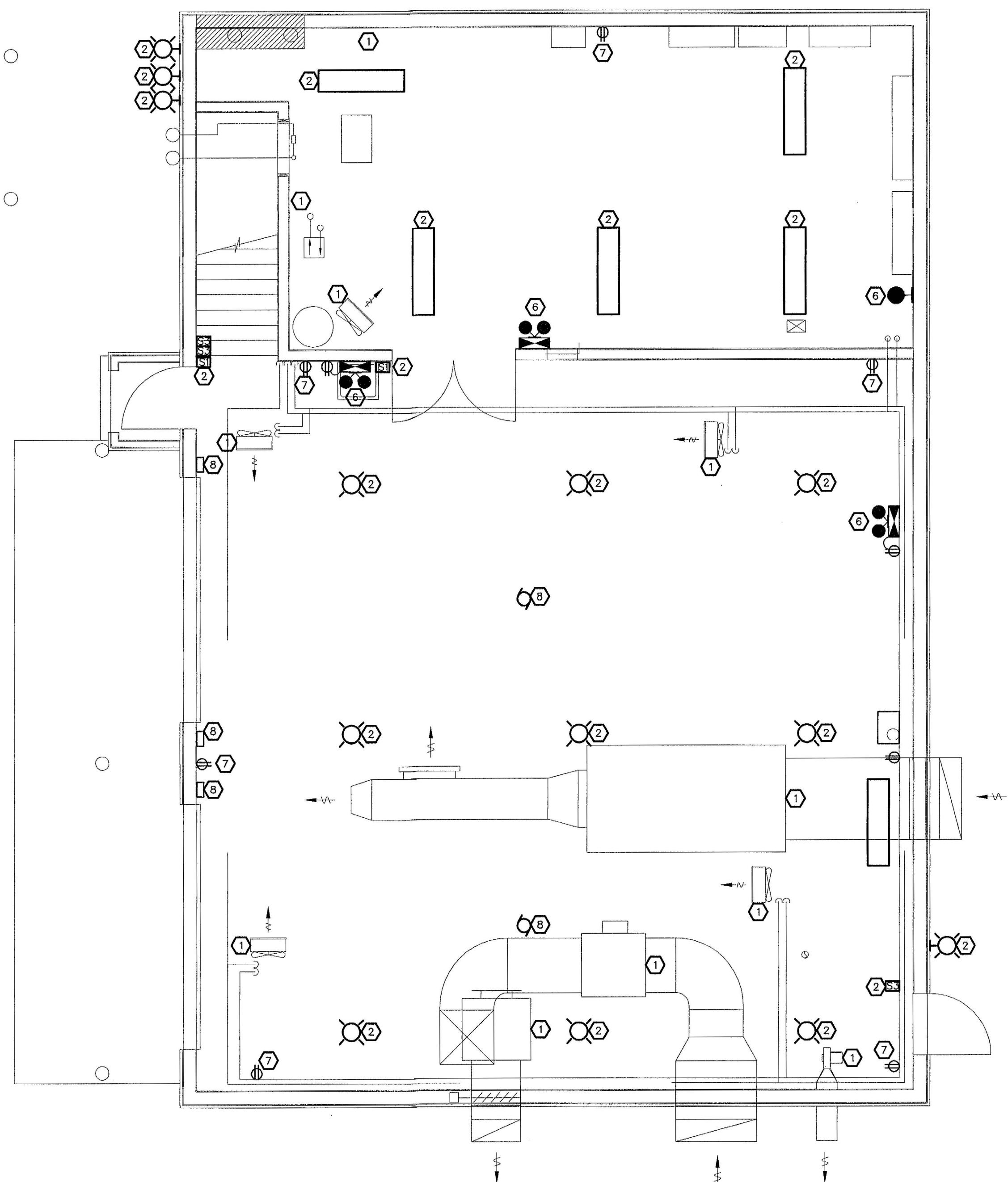


1 ELECTRICAL BUILDING LAYOUT – UPPER LEVEL POWER, LIGHTING AND HVAC REMOVALS
SCALE 1:



3 ELECTRICAL BUILDING LAYOUT – LOWER LEVEL POWER, LIGHTING AND HVAC REMOVALS
SCALE 1:

REMOVAL NOTES:

GENERAL NOTES FOR ALL REMOVAL WORKS:

- UNLESS OTHERWISE NOTED, "REMOVE" OR "REMOVED" INDICATES CONTRACTOR TO DISCONNECT, REMOVE AND DISPOSE OF ELECTRICAL EQUIPMENT INCLUDING ALL ASSOCIATED CONDUIT, FASTENERS, JUNCTION BOXES, SUPPORTS AND WIRING BACK TO POWER SUPPLY PANEL.
- BURIED CONDUIT AND CABLES SHOULD BE CUT OFF AT THE FINISHED FLOOR LEVEL AND SEALED.
- MAINTAIN OPERATION TO ALL AREAS OF THE PLANT, AS THE PLANT IS TO OPERATE AT ALL TIMES WITH MINIMAL INTERRUPTIONS.
- CONTRACTOR TO PREPARE AN ELECTRICAL REMOVAL SCHEDULE FOR REVIEW WITH ENGINEER AND OWNER PRIOR TO BEGINNING ANY SHUT DOWN WORK.
- ALL REMOVAL WORK SCHEDULES REQUIRED BY THE CONTRACTOR ARE TO BE APPROVED BY ENGINEER AND OWNER TEN (10) WORKING DAYS PRIOR TO ANY POWER SHUTDOWN.
- REMOVAL WORK IS TO OCCUR WHILE PLANT IS OPERATING AT "LOW FLOW" CONDITIONS, WITH MINIMAL EQUIPMENT OPERATING. CONTRACTOR IS TO INCLUDE ALL NECESSARY PREMIUM LABOUR TIME TO PERFORM REMOVAL WORK ON WEEKENDS, NIGHTS OR OTHER "NON-REGULAR" TIMES AS DIRECTED BY THE OWNER/OPERATOR.
- CONTRACTOR TO PROVIDE STANDBY POWER IN THE EVENT NORMAL POWER OR EXISTING STANDBY POWER IS UNAVAILABLE DUE TO CONSTRUCTION ACTIVITY OR WORK.

- EXISTING MECHANICAL DEVICE TO BE REMOVED BY MECHANICAL CONTRACTOR. ELECTRICAL CONTRACTOR TO REMOVE ALL ASSOCIATED ELECTRICAL COMPONENTS.
- CONTRACTOR TO REMOVE EXISTING LUMINAIRE AND ASSOCIATED SWITCHES . MARK POWER SUPPLY PANEL BREAKER AS SPARE.
- HUH-11 TO REMAIN. CONTRACTOR REMOVE EXISTING MOTOR STARTER AND START/STOP STATION. MARK POWER SUPPLY PANEL BREAKER AS SPARE.
- CONTRACTOR TO RELOCATE NUVUK PS FLOWMETER AND JOHNSTON COVE PS FLOWMETER TO EXISTING FACILITY PLC. CONTRACTOR TO VERIFY ALL REMAINING EQUIPMENT HAS BEEN MADE REDUNDANT. ONCE VERIFIED, CONTRACTOR REMOVE EXISTING CONTROL CABINET. MARK POWER SUPPLY PANEL BREAKER AS SPARE.
- FN-11 AND WF-2 TO REMAIN. CONTRACTOR TO REMOVE ALL ASSOCIATED ELECTRICAL COMPONENTS.. MARK POWER SUPPLY PANEL BREAKER AS SPARE.
- CONTRACTOR TO REMOVE THE EMERGENCY BATTERY BACKUP LIGHTS AND ASSOCIATED RECEPTACLE. MARK POWER SUPPLY PANEL BREAKER AS SPARE.
- CONTRACTOR TO REMOVE RECEPTACLE. MARK POWER SUPPLY PANEL BREAKER AS SPARE.
- CONTRACTOR TO REMOVE DOOR OPNER, OPEN/CLOSE STATION AND MOTORS. MARK POWER SUPPLY PANEL BREAKER AS SPARE.

- This drawing is the exclusive property of Runge & Associates Inc. and the reproduction of any part without prior written consent of this office is strictly prohibited.
- The contractor shall verify all dimensions, levels, and datums on site and report any discrepancies or omissions to this office prior to construction.
- This drawing is to be read and understood in conjunction with all other plans and documents applicable to this project.
- Drawing revision must be noted "Issued For Construction" before any work commences

Issue / Revision	Date dd/mm/yyyy
1 ISSUED FOR 66% SUBMISSION	06/09/2012
2 ISSUED FOR 99% SUBMISSION	JANUARY 2013
3 ISSUED FOR TENDER	FEBRUARY 2013
4 REVISED AS PER ADDENDUM 1 TO 4 AND ISSUED FOR CONSTRUCTION	APRIL 2013

PERMIT TO PRACTICE
Runge & Associates Inc.
Signature: *[Signature]*
Date: APRIL 22, 2013
PERMIT NUMBER: P617
The Association of Professional Engineers,
Geologists and Geophysicists of NWT/NJ



runge
& associates inc. ENGINEERS
864 Hurontario Street P.O. Box 387 Collingwood, ON, L9Y 3Z7
b: (705) 446-3590 f: (705) 446-3588 www.ralengineers.ca

neegan BURNSIDE
Nuna Burnside Engineering & environmental LTD.
106B Scurfield Blvd., Winnipeg, Manitoba
telephone (204) 949-7110 fax (204) 949-7111
web www.neeganburnside.com

Client
**GOVERNMENT OF NUNAVUT
COMMUNITY & GOVERNMENT
SERVICES**
RANKIN INLET
SEWAGE TREATMENT PLANT

Drawing Title		
BUILDING ELECTRICAL EQUIPMENT LAYOUT – REMOVAL		
Drawn By T.I.	Checked By S.R.I.	Drawing No. E8
Scale AS SHOWN	Project No. 300031281	