

Chapter 28 ELECTRICAL PANELS

MANUFACTURER/DISTRIBUTOR:

CDE

298, Rue De Martigny Ouest

Saint-Jérôme (Québec)

J7Y 4C9

Phone.: (450) 438-1263

Fax: (450) 438-3728

Courriel : cde@cde.qc.ca

- 28.1 **PANELS**
- 28.2 **MAIN CIRCUIT BREAKER**
- 28.3 **MAIN DISTRIBUTION PANEL**
- 28.4 **AUTOMATIC TRANSFER SWITCH**
- 28.5 **ENTRY BREAKER HYD_SFC703PW 7 INSERT.**

Main Breaker
(250A)



Main

AC Magnetic Trip Setting	1250A - 2500A Adjustable Trip
Ampere Rating	250A
Approvals	UL Listed - CSA Certified - IEC Rated
Catalog Reference Number	0611CT0401
Circuit Breaker Type	Standard
Depth	5.00 Inches
For Use With	Industrial Enclosures and Switchboards
Frame Type	J-Frame
General Application	Provides overload and short circuit protection
HACR Rated	Yes
Height	7.52 Inches
Marketing Trade Name	Powerpact
Mounting Type	Unit Mount
Number of Poles	3-Pole
Short Circuit Current Rating	100kA@240VAC - 65kA@480VAC - 25kA@600VAC
Terminal Type	Line: Lug - Load: Lug
Type	JJ
Voltage Rating	600VAC/250VDC
Weight	5 Pounds
Width	4.12 Inches
Wire Size	#3/0-350 AWG/kcmil(Al/Cu)

SHOP DRAWING

Reviewed by: Samuel Charbonneau

Date: 17 juin 2016

Reviewed ☒

Reviewed as noted ☐

Resubmit ☐

Out for approval

SIFEC NORTH INC.

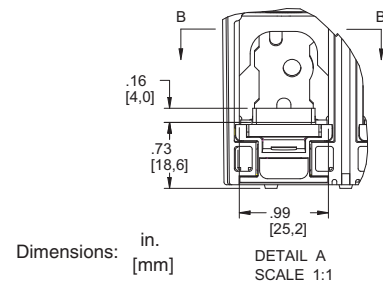
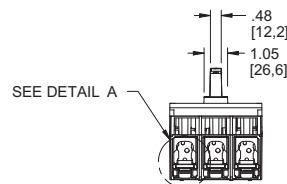
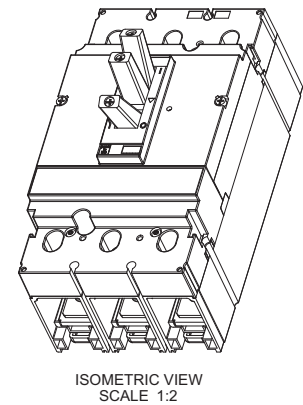
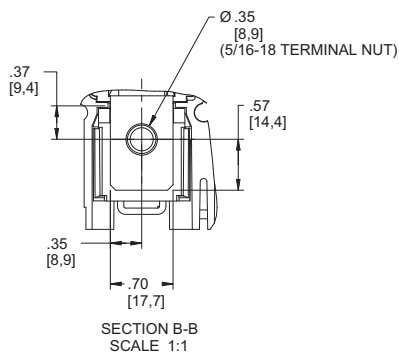
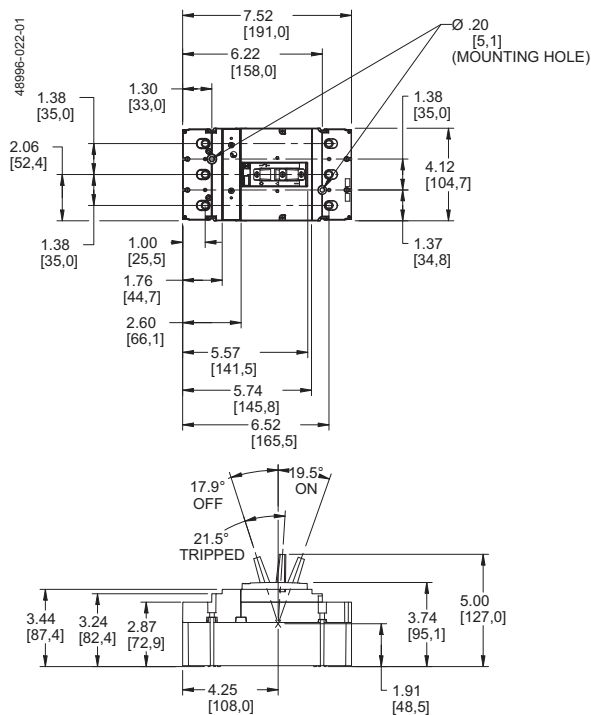
The information provided in this documentation contains general descriptions and/or technical characteristics of the performance of the products contained herein. This documentation is not intended as a substitute for and is not to be used for determining suitability or reliability of these products for specific user applications. It is the duty of any such user or integrator to perform the appropriate and complete risk analysis, evaluation and testing of the products with respect to the relevant specific application or use thereof. Neither Schneider Electric Industries SAS nor any of its affiliates or subsidiaries shall be responsible or liable for misuse of the information contained herein.

Powerpack® H- and J-frame Circuit Breakers

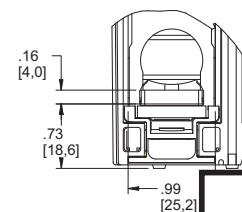
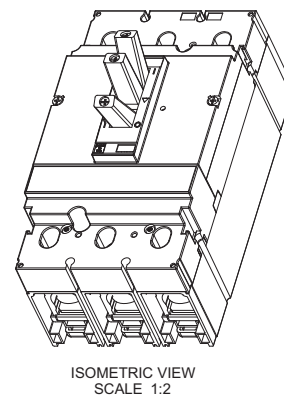
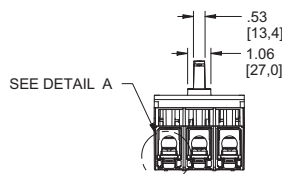
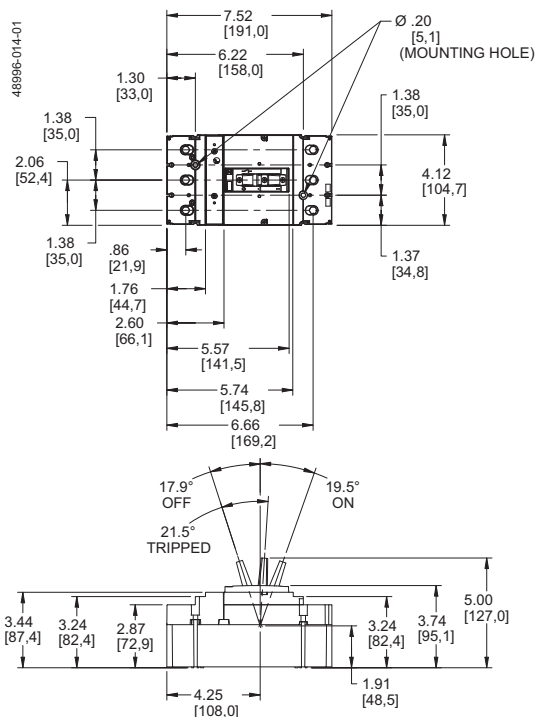
Section 5—Dimensions

J-frame Dimensional Drawings*

150–250 A Bus Bar J-frame 3-Pole



150–250 A Lug-Lug J-frame 3-Pole

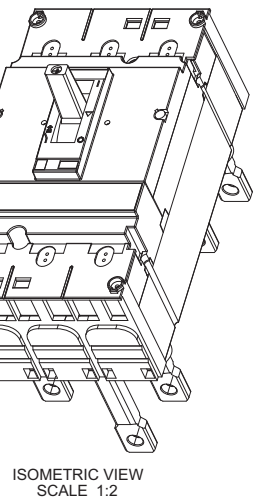
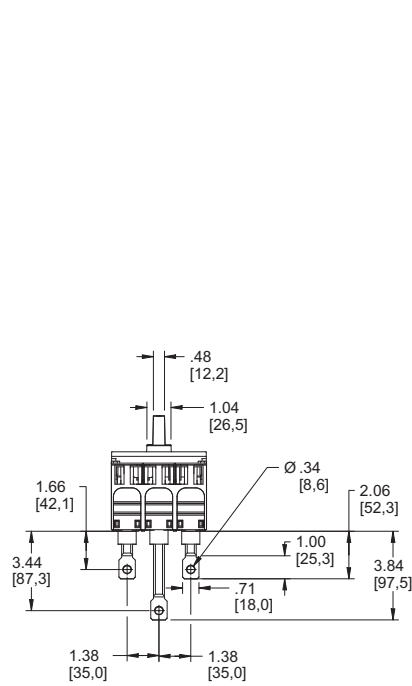
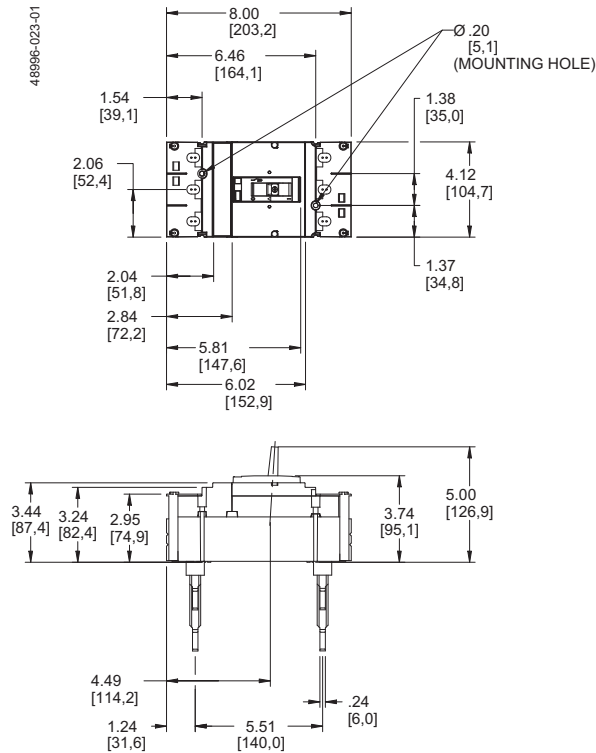


* 2-dimensional (2D) drawings & 3-dimensional (3D) models are available online in multiple file formats.

Powerpack® H- and J-frame Circuit Breakers

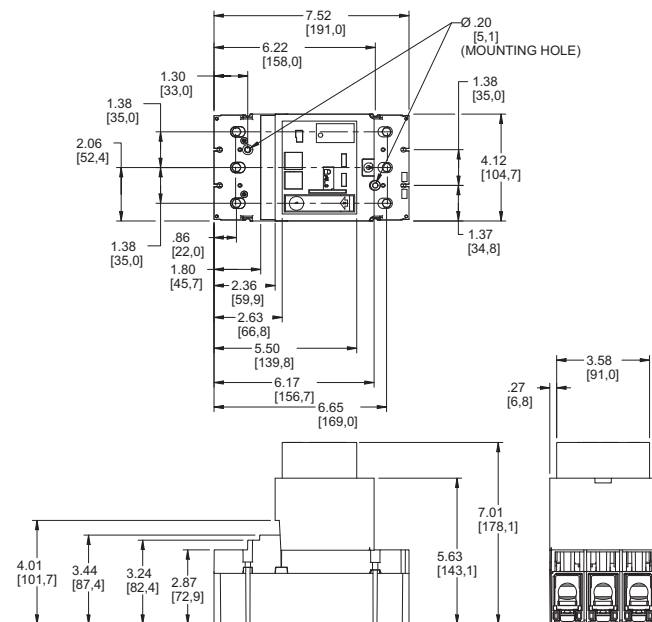
Section 5—Dimensions

150–250 A Rear Connected J-frame 3-Pole

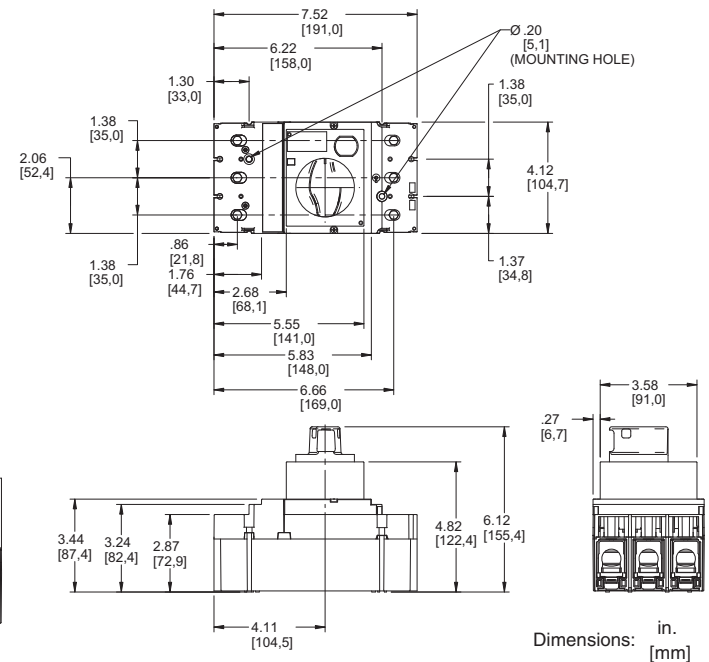


Dimensions: in.
[mm]

J-frame Motor Operator Detail



J-frame Rotary Handle Detail



Dimensions: in.
[mm]



J250AWK



J250R

Enclosures for PowerPact® H- and J-Frame Circuit Breakers

Versatile solutions for multiple applications

The new Square D® enclosures for PowerPact H- and J-Frame circuit breakers offer enhanced flexibility for 15 A to 250 A applications where a branch circuit disconnect with circuit protection is required. They are suitable for use as service entrance equipment and feature a neutral capacity up to 200%.

Customer Values

- **Versatility** – Provides a full line of enclosures for application of PowerPact H- and J-Frame 15 A to 250 A circuit breakers:
 - Type 1 catalog number J250S (surface mount) and J250F (flush mount)
 - IP30 rated per IEC60529
 - Type 3R catalog number J250R (outdoor)
 - IP43 rated per IEC60529
 - Type 3, 3R, 4, 4X, 5, 12 catalog number J250DS (type 304 stainless steel, corrosion resistant, watertight)
 - IP64 rated per IEC60529
 - Type 3R, 5, 12 catalog number J250AWK (dust tight)
 - IP64 rated per IEC60529
- **Flexibility** – Designed to work with all PowerPact H- and J-Frame circuit breaker internal mounted accessories and lug options
- **Accessibility** – Features quick release cover that latches on DS (type 4X) and AWK (type 12) enclosures
- **Performance** –
 - AIC Ratings up to 125 KA @ 240 V, 65 KA @ 480 V and 25 KA @ 600 V
 - Universal North American application - cULus listed

Benefits of PowerPact Circuit Breakers

- Uniform interruption ratings (D, G, J, L) simplify selection and application of ratings
- New and improved ratings available; L interruption level for 125 KA at 240 V
- Complete 600 V Delta ratings: makes them suitable for any market in North America
- Improved series ratings in enclosures

SHOP DRAWING

Reviewed by: Samuel Charbonneau

Date: 17 juin 2016

Reviewed

☒

Reviewed as noted

☐

Resubmit

☐

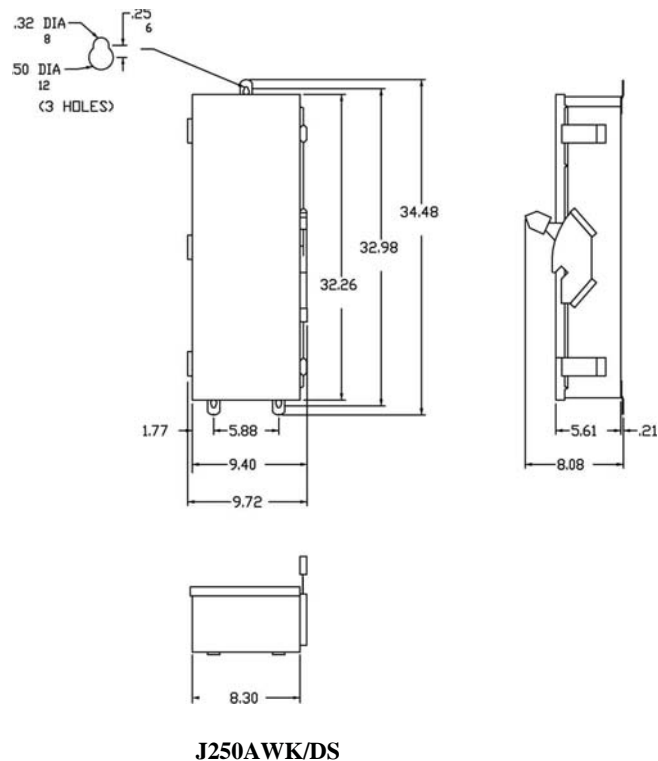
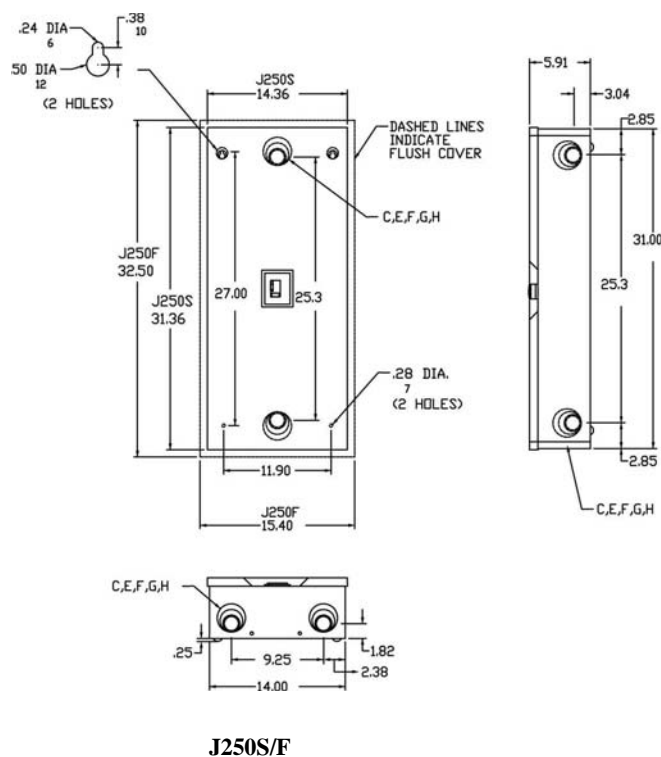
Out for approval

Cross Reference

NEW! H and J type

Existing KA type

Catalog #	Series	H	W	D	Catalog #	Series	H	W	D
J250F	A01	31.36"	14.36"	6"	KA225F	E2	29.88"	13.75"	5.38"
J250S	A01	32.40"	15.40"	6"	KA225S	E2	28.38"	12.50"	6.13"
J250R	A01	31.05"	14.47"	6.28"	KA225RB	E2	28.50"	12.38"	5.38"
J250DS	A01	32.26"	9.72"	5.61"	KA225DS	E2	25.25"	9.50"	5.38"
J250AWK	A01	32.26"	9.72"	5.61"	KA225AWK	E2	25.25"	9.50"	5.38"

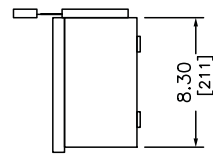
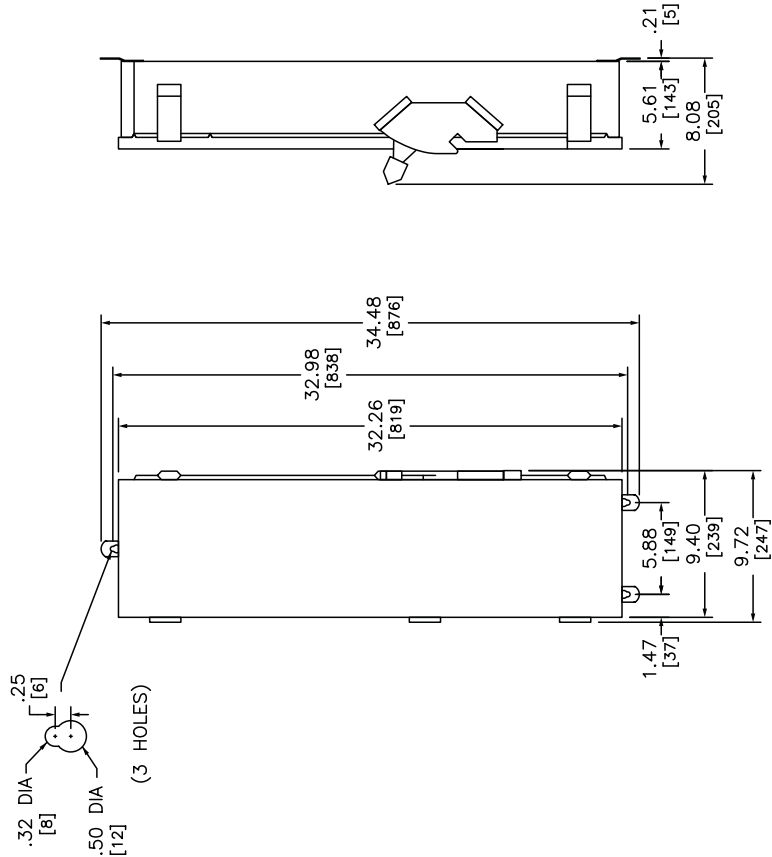


Schneider Electric North American Operating Division

1415 S. Rosele Road
Palatine, IL 60067
Tel: 847-397-2600
Fax: 847-925-7500

Order Number 4100HO0503
Page 494 of 2421

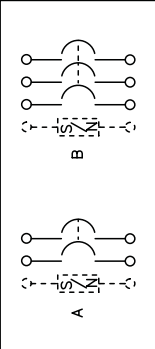
Main Breaker Enclosure



J250AWK
NEMA/EE MAC TYPE 12/3R
J250DS
NEMA/EE MAC TYPE 3,3R,4,4X,5 OR 12

NOTES:
FINISH - NEMA/EE MAC TYPE 12/3R, GRAY BAKED ENAMEL ELECTRODEPOSITED OVER CLEANED PHOSPHATIZED STEEL. NEMA/EE MAC TYPE 3,3R,4,4X,5 OR 12 - TYPE 304 STAINLESS STEEL.
UNLISTED - FILE E-136861 - CSA CERTIFIED - FILE #LL89067.
CE MARKED
SUITABLE FOR USE AS SERVICE EQUIPMENT WHEN NEUTRAL ASSEMBLY IS INSTALLED.
NEUTRAL - INSULATED GROUNDABLE.

WIRING DIAGRAM



CIRCUIT BREAKER TERMINAL LUG DATA				
CIRCUIT BREAKER CATALOG NO. PREFIX	AMPERE RATING	CONDUCTORS PER PHASE	WIRE SIZE (AWG/KCMIL)	
			MAX	MIN
HD, HG, HJ, HL	15-150	1	#3/0	#14 AL/CU
JD, JG, JJ, JL	150-250	1	#4/0	#1/0 AL/CU

FIELD INSTALLABLE SOLID NEUTRAL ASSEMBLIES AND GROUND KIT						
CIRCUIT BREAKER CATALOG NO. PREFIX	MAXIMUM AMPERE RATING	NUMBER OF TERMINALS	CONDUCTORS PER TERMINAL	WIRE SIZE (AWG/KCMIL)		TYPE
				MAX	MIN	
SN100FA	100A	2	1	#1/0	#14	AL
SN400LA	250A	2	1 OR 2	#600	#1	AL OR CU
PK0GTU250	250A	2	1	#300	#4	AL OR CU
PK0GTU250	250A	2	1	#300	#6	AL OR CU

DUAL DIMENSIONS: INCHES MILLIMETERS

FIELD INSTALLABLE CIRCUIT BREAKER DATA										
CIRCUIT BREAKER CATALOG NO. PREFIX	WIRING DIA	AMPERE RATING	UL LISTED INTERRUPTING RATING RMS SYMMETRICAL AMPERES						FEDERAL SPECS W-C-375B/ GEN	
			AC VOLTAGE			DC VOLTAGE				
			240	480Y/277	480	600Y/347	600	125		250
HD	A.B	15-150	25K	18K	18K	14K	14K	20K	20K	-
JD	A.B	150-250	25K	18K	18K	14K	14K	20K	20K	-
HG	A.B	15-150	65K	35K	35K	18K	18K	20K	20K	-
JG	A.B	150-250	65K	35K	35K	18K	18K	20K	20K	-
HJ	A.B	15-150	100K	65K	65K	25K	25K	20K	20K	-
JJ	A.B	150-250	100K	65K	65K	25K	25K	20K	20K	-
HL	A.B	15-150	125K	65K	65K	25K	25K	20K	20K	-
JL	A.B	150-250	125K	65K	65K	25K	25K	20K	20K	-



CIRCUIT BREAKER ENCLOSURES
15-250 AMPERE
ENCLOSURE - NEMA/EE MAC TYPE 12/3R INDUSTRIAL
NEMA/EE MAC TYPE 3,3R,4,4X,5 OR 12 STAINLESS STEEL

DWG# 3363

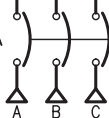
Shop Drawings
Contractor Approval
Approved by: S.B.S., G.F.
Date: Mar 03, 2015
SIFEC NORTH INC

Panel P-1

REV	DESCRIPTION	BY	DATE						
---	-----	---	---/---/---	---	---	---	---	---	---

CKT NO	ACCESSORIES	TYPE	RATING AMP/P		RATING AMP/P	TYPE	ACCESSORIES	CKT NO
1								2
3		QOB	100/3		100/3	QOB		4
5								6
7								8
9		QOB	100/3		60/3	QOB		10
11								12
13		QOB	30/2		30/2	QOB		14
15								16
17		QOB	15/1		15/1	QOB		18
19		QOB	15/1		15/1	QOB		20
21		QOB	15/1		15/1	QOB		22
23		QOB	15/1		15/1	QOB	PREPARED SPACE	24
25	PREPARED SPACE	QOB	15/1		15/1	QOB	PREPARED SPACE	26
27	PREPARED SPACE	QOB	15/1		15/1	QOB	PREPARED SPACE	28
29	PREPARED SPACE	QOB	15/1		15/1	QOB	PREPARED SPACE	30
31	PREPARED SPACE	QOB	15/1		15/1	QOB	PREPARED SPACE	32
33	PREPARED SPACE	QOB	15/1		15/1	QOB	PREPARED SPACE	34
35	PREPARED SPACE	QOB	15/1		15/1	QOB	PREPARED SPACE	36
37	PREPARED SPACE	QOB	15/1		15/1	QOB	PREPARED SPACE	38
39	PREPARED SPACE	QOB	15/1		15/1	QOB	PREPARED SPACE	40
41	PREPARED SPACE	QOB	15/1		15/1	QOB	PREPARED SPACE	42
43	PREPARED SPACE	QOB	15/1		15/1	QOB	PREPARED SPACE	44
45	PREPARED SPACE	QOB	15/1		15/1	QOB	PREPARED SPACE	46
47	PREPARED SPACE	QOB	15/1		15/1	QOB	PREPARED SPACE	48
49	PREPARED SPACE	QOB	15/1		15/1	QOB	PREPARED SPACE	50
51	PREPARED SPACE	QOB	15/1		15/1	QOB	PREPARED SPACE	52
53	PREPARED SPACE	QOB	15/1		15/1	QOB	PREPARED SPACE	54
55	PREPARED SPACE	QOB	15/1		15/1	QOB	PREPARED SPACE	56
57	PREPARED SPACE	QOB	15/1		15/1	QOB	PREPARED SPACE	58
59	PREPARED SPACE	QOB	15/1		15/1	QOB	PREPARED SPACE	60
61								62
63								64
65								66
67								68
69								70
71	BLANK						BLANK	72

S/N

M/B
250A
LA

S/N

PHYSICAL DATA

ENCLOSURE Type 3R/4/4X/5/12 StainlessStl
 FRONT CAT#: Trim w/Box
 BOX CAT#: MH744WPSSULNF
 DIMENSIONS:
 74"H x 20"W x 6.5"D
 WIRE BENDING SPACE:
 TOP - 12.25
 BOTTOM - 15.43
 SIDE - 5.9
 PBA: 711SS
 BUSSING: Copper
 Silver/Tin Plated
 OPTIONAL FEATURES:
 ALUMINUM SOLID NEUTRAL
 ALUMINUM GROUND BAR

ELECTRICAL DATA

SYSTEM: 208Y/120V 3Ph 4W 60Hz
 System Ampacity: 250A
 10kA SYMS. SCCR
 MAIN: MAIN BREAKER LA 250A
 Bottom FEED
 42kA AIR
 INCOMING CONDUCTORS(S) PER NEC
 Wire Bending Space:
 #1 - 600,(2)#1 - 250 kcmil
 BRANCH MOUNTING TYPE: BOLT-ON
 -----BRANCH SUMMATION-----
 3 - 100A/3P QOB 2 - 30A/2P QOB
 7 - 15A/1P QOB 37 - 15A/1P-PS QOB
 1 - 60A/3P QOB

SHOP DRAWING

Reviewed by: Samuel Charbonneau
 Date: 17 juin 2016

Reviewed ☒Reviewed as noted ☐Resubmit ☐

Out for approval

SIFEC NORTH INC.

JOB NAME: SPE-WATER SUPPLY SYSTEM

EQUIPMENT DESIGNATION: P1

JOB LOCATION: MIRABEL QC

EQUIPMENT TYPE: NQ (Circuit Breaker Type) PANEL 1 OF 1

DRAWN BY: (Q2C)

DRAWING TYPE: ONE LINE DIAGRAM

ENGR:

DATE: June 14 2016

DRAWING STATUS: QUOTE

Schneider Electric

Schneider Electric

Page 496 of 2421

DWG# 038436634-01

PG 1 OF 1 REV -

Panel P-2

REV	DESCRIPTION	BY	DATE	---	---	---	---
---	---	---	---	---	---	---	---

CKT NO	ACCESSORIES	TYPE	RATING AMP/P		RATING AMP/P	TYPE	ACCESSORIES	CKT NO
1		QOB	30/2		25/1	QOB		2
3		QOB	15/1		20/1	QOB		4
5		QOB	15/1		15/1	QOB		6
7		QOB	15/1		15/1	QOB		8
9		QOB	15/1		15/1	QOB		10
11		QOB	15/1		15/1	QOB		12
13		QOB	15/1		15/1	QOB		14
15		QOB	15/1		15/1	QOB		16
17		QOB	15/1		15/1	QOB	PREPARED SPACE	18
19	PREPARED SPACE	QOB	15/1		15/1	QOB	PREPARED SPACE	20
21	PREPARED SPACE	QOB	15/1		15/1	QOB	PREPARED SPACE	22
23	PREPARED SPACE	QOB	15/1		15/1	QOB	PREPARED SPACE	24
25	PREPARED SPACE	QOB	15/1		15/1	QOB	PREPARED SPACE	26
27	PREPARED SPACE	QOB	15/1		15/1	QOB	PREPARED SPACE	28
29	PREPARED SPACE	QOB	15/1		15/1	QOB	PREPARED SPACE	30



SHOP DRAWING

Reviewed by: Samuel Charbonneau
Date: 17 juin 2016

Reviewed ☒
Reviewed as noted ☐
Resubmit ☐

Out for approval

SIFEC NORTH INC.

PHYSICAL DATA

ENCLOSURE Type 3R/4/4X/5/12 StainlessStl
FRONT CAT#: Trim w/Box
BOX CAT#: MH32WPSSULNF
DIMENSIONS:
32''H x 20''W x 6.5''D
WIRE BENDING SPACE:
TOP - 3.25
BOTTOM - 9.6
SIDE - 6.13
PBA: 711SS
BUSSING: Copper
Silver/Tin Plated
OPTIONAL FEATURES:
ALUMINUM SOLID NEUTRAL
ALUMINUM GROUND BAR

ELECTRICAL DATA

SYSTEM: 208Y/120V 3Ph 4W 60Hz
System Ampacity: 100A
10kA SYMS. SCCR
MAIN: MAIN LUGS : 100A
Bottom FEED
INCOMING CONDUCTORS(S) PER NEC
Wire Bending Space:
#6 - 2/0 AWG
BRANCH MOUNTING TYPE: BOLT-ON
-----BRANCH SUMMATION-----
1 - 30A/2P QOB
13 - 15A/1P QOB
13 - 15A/1P-PS QOB
1 - 25A/1P QOB
1 - 20A/1P QOB

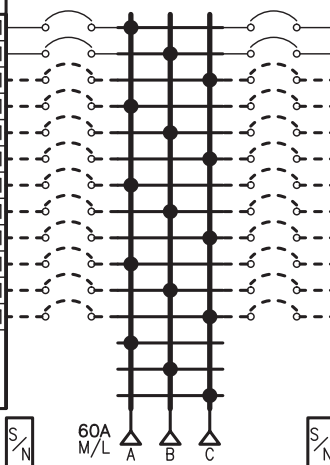
JOB NAME:	SPE-WATER SUPPLY SYSTEM	EQUIPMENT DESIGNATION:	P2
JOB LOCATION:	MIRABEL QC	EQUIPMENT TYPE:	NQ (Circuit Breaker Type) PANEL 1 OF 1
DRAWN BY:	(Q2C)	DRAWING TYPE:	ONE LINE DIAGRAM
ENGR:			
DATE:	June 14 2016		
DRAWING STATUS:	QUOTE	DWG#	038436634-01



Panel PA-1

REV	DESCRIPTION	BY	DATE	--	---	---	---
--	----	--	---/---/---	--	---	---	---

CKT NO	ACCESSORIES	TYPE	RATING AMP/P		RATING AMP/P	TYPE	ACCESSORIES	CKT NO
1		QOB	15/1		15/1	QOB		2
3		QOB	15/1		15/1	QOB		4
5	PREPARED SPACE	QOB	15/1		15/1	QOB	PREPARED SPACE	6
7	PREPARED SPACE	QOB	15/1		15/1	QOB	PREPARED SPACE	8
9	PREPARED SPACE	QOB	15/1		15/1	QOB	PREPARED SPACE	10
11	PREPARED SPACE	QOB	15/1		15/1	QOB	PREPARED SPACE	12
13	PREPARED SPACE	QOB	15/1		15/1	QOB	PREPARED SPACE	14
15	PREPARED SPACE	QOB	15/1		15/1	QOB	PREPARED SPACE	16
17	PREPARED SPACE	QOB	15/1		15/1	QOB	PREPARED SPACE	18
19	PREPARED SPACE	QOB	15/1		15/1	QOB	PREPARED SPACE	20
21	PREPARED SPACE	QOB	15/1		15/1	QOB	PREPARED SPACE	22
23	PREPARED SPACE	QOB	15/1		15/1	QOB	PREPARED SPACE	24
25								26
27								28
29	BLANK						BLANK	30



PHYSICAL DATA

ENCLOSURE Type 3R/4/4X/5/12 StainlessStl
 FRONT CAT#: Trim w/Box
 BOX CAT#: MH32WPSSULNF
 DIMENSIONS:
 32''H x 20''W x 6.5''D
 WIRE BENDING SPACE:
 TOP - 3.25
 BOTTOM - 9.6
 SIDE - 6.13
 PBA: 711SS
 BUSSING: Copper
 Silver/Tin Plated
 OPTIONAL FEATURES:
 ALUMINUM SOLID NEUTRAL
 ALUMINUM GROUND BAR

ELECTRICAL DATA

SYSTEM: 208Y/120V 3Ph 4W 60Hz
 System Ampacity: 60A
 10kA SYMS. SCCR
 MAIN: MAIN LUGS : 60A
 Bottom FEED
 INCOMING CONDUCTORS(S) PER NEC
 Wire Bending Space:
 #6 - 2/0 AWG
 BRANCH MOUNTING TYPE: BOLT-ON
 -----BRANCH SUMMATION-----
 4 - 15A/1P QOB 20 - 15A/1P-PS QOB

SHOP DRAWING

Reviewed by: Samuel Charbonneau
 Date: 17 juin 2016

Reviewed ☒
 Reviewed as noted ☐
 Resubmit ☐

Out for approval

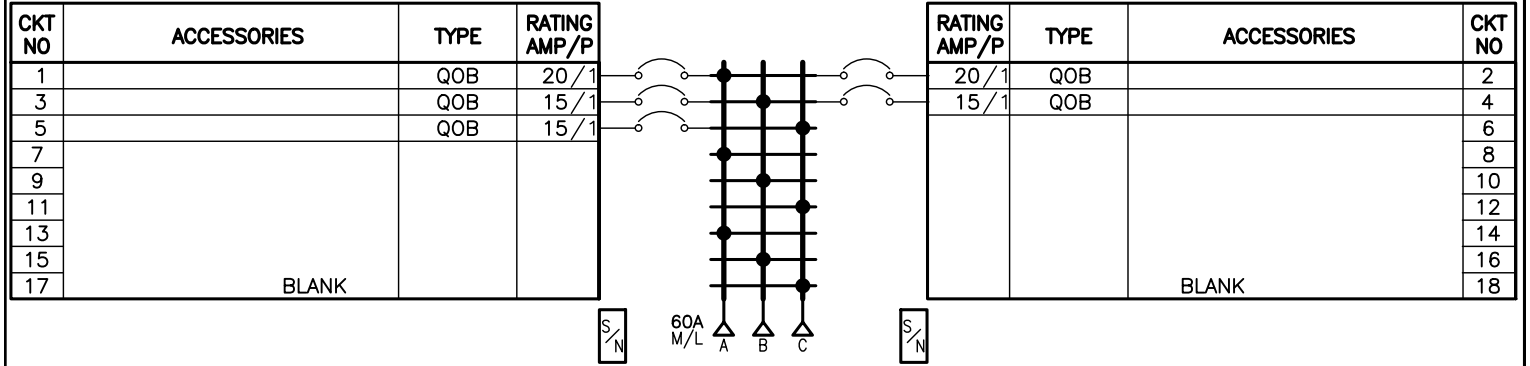
SIFEC NORTH INC.

JOB NAME:	SPE-WATER SUPPLY SYSTEM	EQUIPMENT DESIGNATION:	PA-1
JOB LOCATION:	MIRABEL QC	EQUIPMENT TYPE:	NQ (Circuit Breaker Type) PANEL 1 OF 1
DRAWN BY:	(Q2C)	DRAWING TYPE:	ONE LINE DIAGRAM
ENGR:			
DATE:	June 14 2016		
DRAWING STATUS:	QUOTE	DWG#	038436634-01



Genset Load Centre Panel -- In Generator Room

REV	DESCRIPTION	BY	DATE		
---	-----	--	---/---/---	-	-----



PHYSICAL DATA

ENCLOSURE Type 3R/5/12
 FRONT CAT#: Trim w/Box
 BOX CAT#: MH26WP
 DIMENSIONS:
 26''H x 20''W x 6.5''D
 WIRE BENDING SPACE:
 TOP - 3.25
 BOTTOM - 9.6
 SIDE - 6.13
 PBA: 711

BUSSING: Copper
 Silver/Tin Plated

OPTIONAL FEATURES:
 ALUMINUM SOLID NEUTRAL
 ALUMINUM GROUND BAR

ELECTRICAL DATA

SYSTEM: 208Y/120V 3Ph 4W 60Hz
 System Ampacity: 60A
 10kA SYMS. SCCR
 MAIN: MAIN LUGS : 60A
 Bottom FEED
 INCOMING CONDUCTORS(S) PER NEC
 Wire Bending Space:
 #6 - 2/0 AWG
 BRANCH MOUNTING TYPE: BOLT-ON
 -----BRANCH SUMMATION-----
 2 - 20A/1P QOB 3 - 15A/1P QOB

SHOP DRAWING

This review is solely for the verification of general design quality and does not alleviate the responsibility of the contractor for insuring that all specification, space and installation requirements are met.

Reviewed By: N.K. Reviewed ☒
 Reviewed as noted ☐
 Date: July 11, 2016 Resubmit ☐

CHIARELLI ENGINEERING LTD.

SHOP DRAWING

Reviewed by: Samuel Charbonneau
 Date: 07 juillet 2016

Reviewed ☒
 Reviewed as noted ☐
 Resubmit ☐

Out for approval

SIFEC NORTH INC.

JOB NAME:	SPER-GENSET LOAD CENTRE	EQUIPMENT DESIGNATION:	
JOB LOCATION:	LACHUTE QC	EQUIPMENT TYPE:	NQ (Circuit Breaker Type) PANEL 1 OF 1
DRAWN BY:	(Q2C)	DRAWING TYPE:	ONE LINE DIAGRAM
ENGR:			
DATE:	July 07 2016		
DRAWING STATUS:	QUOTE	DWG# 038534250-01	Page 499 of 2421 PG 1 OF 1 REV -

Low level float switch for DWT
High level float switch for WWT



Flygt ENM-10 liquid level regulators

TRIED-AND-TRUE SIMPLICITY

SHOP DRAWING

Reviewed by: Samuel Charbonneau

Date: 17 juin 2016

Reviewed ☒

Reviewed as noted ☐

Resubmit ☐

Out for approval

SIFEC NORTH INC.

FLYGT
a xylem brand

So simple, yet so reliable

Proper level regulation is critical for operational reliability. Lack of proper regulation can cause improper operation, pump damage or, in the worst case, overflow that results in environmental and economic consequences. With over a decade of experience and countless satisfied users, the natural choice for level regulation is the Flygt ENM-10.

Simple, reliable and effective

The Flygt ENM-10 level regulators are the ideal choice for most level control applications, such as wastewater pumping stations and ground water or drainage pumping. When the liquid level reaches the regulator, the bulb tilts, activating the internal microswitch, which starts or stops a pump or triggers an alarm device.

Practically maintenance free

The outer casing of Flygt ENM-10 level regulators are resistant to most aggressive liquids. The cable material prevents buildup of deposits and other impurities. Rather than floating on the surface, ENM-10 hangs immersed in the liquid. This prevents the cables from tangling when several regulators are used.

Xylem testing indicates Flygt ENM-10 level regulators last several times longer than most standard level regulators. This ensures reliable operation and a low degree of maintenance, thereby keeping service costs down to a minimum over the life cycle.

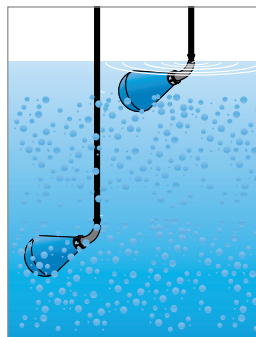
Environmentally friendly

The Flygt ENM-10 level regulator contains no harmful or toxic materials such as lead or mercury and does not require the use of any adhesives. All plastic components are welded and screwed together.

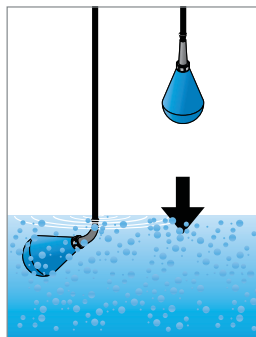


In a two-pump station, four level regulators are generally used. One is positioned at the stop level, one at each pump's start level, and the fourth regulator is used to trigger a high level alarm.

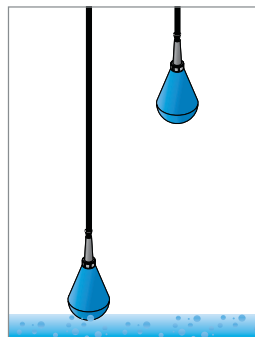
Operating principle



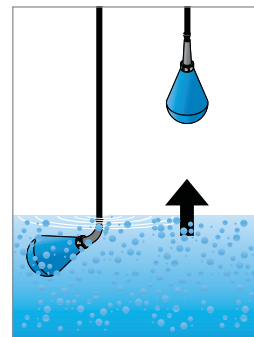
1. Media to be pumped reaches the pre-set level and tilts the upper regulator, which signals the start of the pumping process.



2. The pumping process drains the media.



3. The pumping process stops when the lower regulator returns to the vertical position and signals a stop.



4. The media level begins to rise, starting the process again.

With a variety of installations in mind

The Flygt liquid level regulator comes in two main versions, standard and Ex-approved. Depending upon the media and type of installation, the Flygt ENM-10 is available for a broad range of liquid densities and with many cable lengths from which to choose.

Features



Watertight cable

Encases and protects power supply to the microswitch.

Bending relief (protective sleeve)

Enables watertight, oil-resistant cable entry.

Operational mechanism

Initiates pump start and pump stop through the microswitch when the Flygt ENM-10 tilts or resumes its original position. Delivers reliable performance under all operating conditions including the slow movements often found in stormwater or rainwater installations.

Microswitch

Provides proven quality, performance and reliability for all operating conditions, including switching low currents.

Accessories



Flygt ENM-10 cable holder

Dedicated accessory that reduces the cable wear. Sold separately or as package with the Flygt ENM-10.

Flygt Ex safety barrier

This two-channel safety barrier protects against overvoltage for liquid level regulators. Required when Flygt ENM-10s are to be used in Ex-installations.

Technical data

	Standard version	Ex-approved version
Cable lengths	6, 13, 20, 30 or 50 m* (20, 42, 65, 100 or 167 ft.)	6, 13, or 20 m (20, 42 or 65 ft.)
Liquid density	Between 0.95 and 1.10 g/cm ³ *	Between 0.95 and 1.10 g/cm ³
Materials	Body: Polypropylene Bending relief: EPDM rubber Cable: Special compound PVC & NBR/PVC	Body: Conductive polypropylene/carbon black Bending relief: NBR/PVC rubber Cable: NBR/PVC
Liquid temperature	Min. 0°C (32°F) Max. 60°C (140°F)	Min. 0°C (32°F) Max. 60°C (140°F)
Ingress protection	IP 68	IP 68
Electrical range (microswitch)	Interrupting capacity: AC: 250 V/10 A resistive load AC: 250 V/3 A inductive load at $\cos\phi = 0.5$ DC: 24 V/ 10mA min., 6 A max. Note that local regulations may limit the voltage.	Interrupting capacity: AC: 250 V/10 A resistive load AC: 250 V/3 A inductive load at $\cos\phi = 0.5$ DC: 24 V/ 10mA min., 6 A max. Note that local regulations may limit the voltage.
Approvals	CE, CSA, SEMKO, NEMKO, DEMKO	CE, SEMKO, NEMKO, DEMKO, ATEX/IECEX

*Other cable lengths and liquid densities available upon request.

The Flygt ENM-10 is a part of the Level Sensor product range from Xylem, covering most level measuring needs.

Xylem ['zīləm]

- 1) The tissue in plants that brings water upward from the roots
- 2) A leading global water technology company

We're 12,000 people unified in a common purpose: creating innovative solutions to meet our world's water needs. Developing new technologies that will improve the way water is used, conserved, and re-used in the future is central to our work. We move, treat, analyze, and return water to the environment, and we help people use water efficiently, in their homes, buildings, factories and farms. In more than 150 countries, we have strong, long-standing relationships with customers who know us for our powerful combination of leading product brands and applications expertise, backed by a legacy of innovation.

For more information on how Xylem can help you, go to xyleminc.com