

Chapter 30 LIGHTING

MANUFACTURER/DISTRIBUTOR:

CDE

298, Rue De Martigny Ouest

Saint-Jérôme (Québec)

J7Y 4C9

Phone.: (450) 438-1263

Fax: (450) 438-3728

Courriel : cde@cde.qc.ca

- 30.1 **TYPE A LITHONIA VAP 12000LM PCL MD MVOLT GZ10 35K 80CRI CMB**
- 30.2 **TYPE B - Lithonia TWS LED 1 50K 120 PE**
- 30.3 **TYPE C - Lithonia TWP LED 20C 700 50K T3M 120 PE DDBXD**
- 30.4 **EXIT SIGN - AIMLITE CARPW0636 U M-2SM4LJ WHT/ATD**



FEATURES & SPECIFICATIONS

INTENDED USE — Ideal for use in applications where smart, energy-efficient fixtures are desired. Typical applications include parking garages, canopies, transportation, schools, hospitals, cold storage and exterior retail environments where moisture or dust is a concern. Polycarbonate enclosure protects fixture while remaining easy to service and clean.

CONSTRUCTION — UV-stabilized, injection-molded, impact-resistant, frosted polycarbonate housing with continuous poured-in-place, closed-cell gasket. 20-gauge steel channel and channel cover. Aluminum sheet metal board plate for thermal conduction and support. Captive, tamper-resistant, polycarbonate latches standard (8 Torx T-20 tamper-resistant screws included). Stainless steel latches also available. Fixture design allows for approximately 4% up-light.

OPTICS — UV-stabilized, injection-molded, impact-resistant, clear transparent and frosted, polycarbonate lens with aesthetic rib detail (.080" thick). Miro 5 aluminum reflector used to achieve wide distribution.

ELECTRICAL — Utilizes high-output LEDs integrated on a two-layer circuit board, ensuring cool-running operation. Electronic LED driver rated for 44 input watts and is standard 0-10V dimming. Integral 6kV/3kA surge protection, tested in accordance to IEEE/ANSI standards. L85 at 60,000 hours.

INSTALLATION — Stainless steel surface spring-mounting brackets standard (2 included) allows for ceiling or suspended mount. A variety of stainless steel mounting options also available: J-box mounting and mounting brackets for suspension with aircraft cable (cable not included). Optional stainless steel V-hooks available for chain hanging (chain not included). Surface conduit entry on each end and on top. For horizontal and vertical mounting on a wall, application must be under a covered ceiling and QMB option recommended. 1/2" - 3/4" KO. When wall mounted the product will be rated for damp location only.

LISTINGS — CSA Certified to UL and C-UL standards. For use in ambient temperatures ranging from -20°F (-29°C) to 104°F (40°C). VAP LED is wet location listed for covered ceiling applications. IP65 and IP66 rated. VAP LED is NSF Splash Zone rated when suspended or ceiling mounted. When wall mounted the product will be rated for damp location only. DesignLights Consortium® (DLC) qualified product. Not all versions of this product may be DLC qualified. Please check the DLC Qualified Products List at www.designlights.org to confirm which versions are qualified.

WARRANTY — 5-year limited warranty. Complete warranty terms located at www.acuitybrands.com/CustomerResources/Terms_and_conditions.aspx

For installed Rough Service Product(s), Acuity warrants that, for the lifetime of the product(s), the polycarbonate lens and/or polycarbonate housing will withstand breakage resulting from occasional physical abuse and rough handling (the "Rough Service Warranty"), notwithstanding the vandalism exclusion set forth at www.acuitybrands.com/CustomerResources/Terms_and_conditions.aspx

Note: Actual performance may differ as a result of end-user environment and application.

All values are design or typical values, measured under laboratory conditions at 25 °C.

Specifications subject to change without notice.

Catalog
Number

Notes

Type

SHOP DRAWING

Reviewed by: Samuel Charbonneau

Date: 17 juin 2016

Reviewed

Reviewed as noted

Resubmit

Out for approval

SIFEC NORTH INC.

ARCHWAY™
PASSAGE™

VAP LED

CEILING/
SUSPEND MOUNT



Specifications

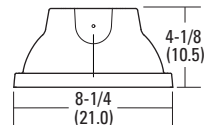
Length: 54-3/4 (139.1)

Width: 8-1/4 (21.0)

Depth: 4-1/8 (10.5)

Weight: 13.5 lbs. (5.9 kg)

All dimensions are shown in inches (centimeters) unless otherwise noted.



ORDERING INFORMATION

Lead times will vary depending on options selected. Consult with your sales representative.

Example: VAP 4000LM FST MD MVOLT GZ10 40K 80CRI

VAP							
Series	Nominal lumens	Diffuser	Distribution	Voltage	Driver	Color temperature	CRI
VAP	4000LM 4,000 lumens 6000LM 6,000 lumens 12000LM 12,000 lumens ¹	FST Frosted polycarbonate lens PCL Clear polycarbonate lens	MD Medium WD Wide	MVOLT MVOLT 120 120V 277 277V 347 347V ² 480 480V ²	GZ10 0-10V dimming	30K 3000K 35K 3500K 40K 4000K 50K 5000K	80CRI 80 CRI 90CRI 90 CRI

Options³

SF Single fuse ⁴	STSL Stainless steel tamper resistant latches	MSI10XAWL10M DSCXAWL Xpoint wireless integral motion sensor, On/Off operation for motion sensing, override Off due to daylight ⁴
BSL722 Bodine® emergency LED battery pack for 0°C and up ^{4,5}	QMB Quick-mount ceiling bracket	MSI10NWL Low mount 360 integral motion sensor, wet location, On/Off operation ⁴
BSL722C Bodine® emergency LED battery pack for -20°C and up ^{4,5}	CMB Chain-mount suspension bracket	MSI102L3VWL Low mount 360 integral motion sensor, wet location, High/Low operation (bi-level) ⁴
WLF Wet location fitting (two outboard, top) ⁶	JSB Junction box snap-bracket	MSI10NWL DSCNWL Low mount 360 integral motion sensor, wet location, On/Off operation for motion sensing, override Off due to daylight ⁴
WLFIN Wet location fitting (two inboard, top) ⁶	LSC Lens safety clip	XAD XPoint™ wireless controller, 0-10V dimming ⁹
WLFEND Wet location fitting (one end) ⁶	DL Damp location ⁸	
WLFEND2 Wet location fitting (both ends) ^{6,7}	L/SP Less surge protection device	
CS89 6' white cord, 16/3, no plug, wet location		
CS88 6' Brad Harrison 16/3 cord and straight blade plug set ⁴		
CS88L12 12' Brad Harrison 16/3 cord and straight blade plug set ⁴		

Accessories: Order as separate catalog number. (Ships separately)

VAPSMB Surface spring-mount bracket	RK1 T20BIT Hex base driver bit, Torx T20. Tamper resistant screws with center reject pin
VAPQMB Quick-mount ceiling bracket	
VAPCMB Chain-mount bracket	RK1 T20DRV Torx T20 screwdriver for use with tamper resistant screws with center reject pin
VAPJSB Junction box snap bracket	
HC36 Wire hook and 36" chain set ^{10,11}	

Notes

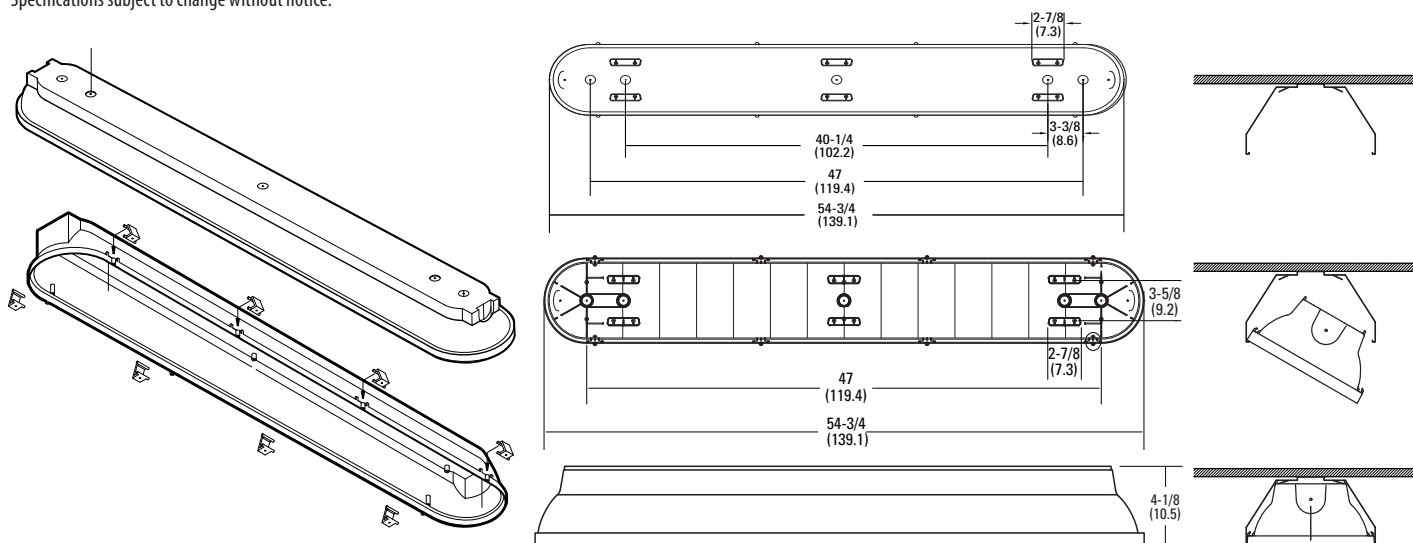
- Not available with BSL722 or BSL722C options.
- 347V and 480V utilize a step-down transformer. Available 60Hz only.
- For additional options, consult factory.
- Must specify voltage.
- Not available with 12000LM lumen package. Maximum ambient temperature 30 °C.
- 5/8" long NPT threaded hub.
- Not available with cord, sensor, or photocell options.
- Required when using battery packs or cord sets that are not rated for wet locations.
- Not available with BSL722 and BSL722C option.
- Requires CMB (chain mount bracket) option.
- For stainless steel, specify STS (example: HC36 STS).

VAP Linear Rough Service, LED

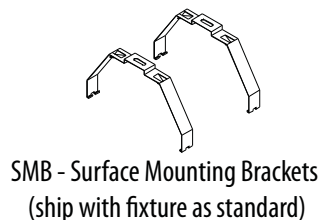
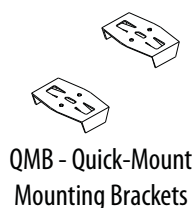
DIMENSIONS

All dimensions are shown in inches (centimeters) unless otherwise noted.

Specifications subject to change without notice.



MOUNTING ACCESSORIES



ARCHWAY™ PASSAGE™ LED Specification Matrix

Nominal lumens	Initial delivered lumens @ 80CRI with clear polycarbonate lens			Initial delivered lumens @80CRI with frosted polycarbonate lens			Wattage @120V	Comparable source
	3500K	4000K	5000K	3500K	4000K	5000K		
4000LM	5,200	5,208	5,672	4,420	4,428	4,822	42	2-lamp 32W T8, 1-lamp 54W T5HO, 70W HID
6000LM	6,630	6,643	7,234	5,637	5,648	6,150	62	3-lamp 32W T8, 2-lamp 54W T5HO, 100W HID
12000LM	11,034	11,056	12,040	9,380	9,400	10,236	107	4-lamp 32W T8, 2-lamp 54W T5HO, 150W HID

Operating hours	0	10,000	20,000	25,000	35,000	50,000	60,000	75,000	100,000
Lumen Maintenance Factor	1	.95	.92	.91	.89	.86	.84	.81	.77

VAP Linear Rough Service, LED**SBOR - WET LOCATION Motion Sensor** (see www.sensorswitch.com for additional information)

- 360° coverage
- On/Off dim
- Photocell optional
- IP66 rated
- Photocell and 0-10VDC dimming options.

Fixture sensor nomenclature	SBOR sensor nomenclature
For shortest lead times use one of the following SBOR configurations	
MSI10NWL	SBOR 10 OEX EB3 WH
MSI102L3VWL	SBOR 10 OEX D EB3 WH 3V
MSI10NWL DSCNWL	SBOR 10 OEX P EB3 WH

**MOTION SENSOR****ORDERING INFORMATION**

Lead times will vary depending on options selected. Consult with your sales representative.

Example: MSI6NWL

Series	Lens option	Dimming	Minimum dim level	Environmental factors
MSI Passive infrared occupancy sensor	6 High mount, 360°	N On/off	0V Off	WL Wet location
	10 Low mount, 360°	2LXX Bi level range ¹	1V 1VDC	
		CXX Continuous dim range ¹	2V 2VDC	
		XA Xpoint wireless signal to external system	3V 3VDC	
			4V 4VDC	
			5V 5VDC	

PHOTOCELL (must be ordered with MSI motion sensor, see above fixture sensor nomenclature table)**ORDERING INFORMATION**

Lead times will vary depending on options selected. Consult with your sales representative.

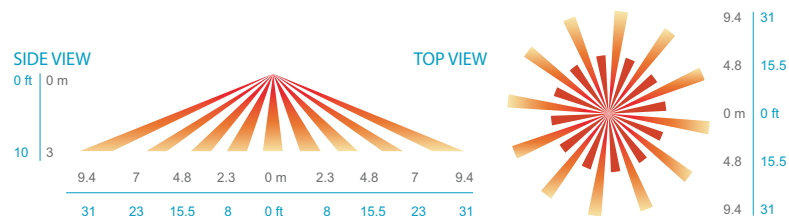
Example: DSCNWL

Series	Dimming	Environmental factors
DSC Passive infrared occupancy sensor with photocell	N On/off	WL Wet location
	2LXX Bi level range ¹	
	CXX Continuous dim range ¹	
	XA Xpoint wireless signal to external system	

Notes¹ XX denotes dimming range.(Ex. 3V, 4V, etc.)

VAP Linear Rough Service, LED**COVERAGE PATTERNS****PARKING GARAGE / LOW MOUNT APPLICATIONS**

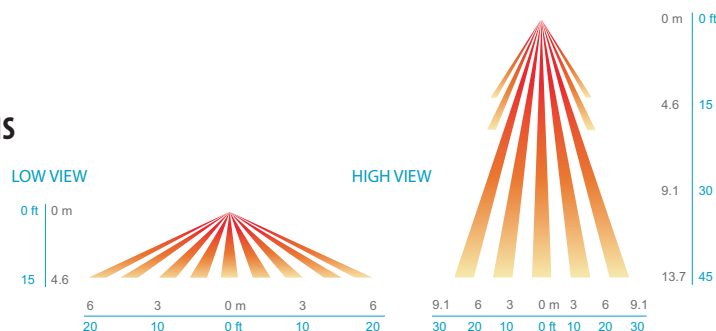
In general, the SBOR 10 is recommended for 8-15 ft (2.44-4.57 m) mounting and provides a coverage area radius for walking motion of greater than 2x the mounting height. The SBOR 10 ODP is ideal for parking garage and low pole mount applications. When mounted 10 ft high, for example, on a luminaire in a parking garage, the sensor's coverage for walking motion extends out 30 ft in a 360° pattern. This closely matches the lighting distribution of a typical parking garage luminaire. When mounted to a light pole, for example, in a parking lot or along a path, the sensor provides 270° of coverage (90° is blocked by the pole). Note, walking askew to sensor typically results in earlier detection than walking directly at sensor.



Coverage Pattern of Low Mount Lens Option (SBOR 10)

SITE & AREA LIGHTING / HIGH MOUNT APPLICATIONS

The SBOR 6 is intended for higher pole mount applications, between 15-30 ft (4.57-9.14 m), and provides a coverage area radius for walking motion of 15-20 ft (4.57-6.10 m). When mounted to a pole the sensor provides 270° of coverage (90° is blocked by the pole).



Coverage Pattern of High Mount Lens Option (SBOR 6)



TWS LED

LED Wall Luminaire

Catalog
Number

Notes

Type

Hit the Tab key or mouse over the page to see all interactive elements.

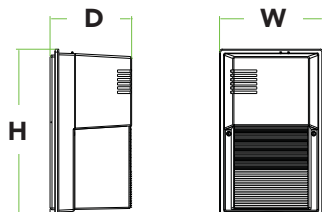
Specifications

Width: 6-3/4"
(17.2 cm)

Height: 10-7/8"
(27.7 cm)

Depth: 5-5/16"
(13.5 cm)

Weight: 3.19 lbs
(1.45 kg)



Introduction

The popular TWS luminaire is now available with long-lasting, energy-efficient LED technology. Featuring a classic dayform, the TWS LED offers a traditional appearance and is powered by advanced LEDs.

The TWS LED luminaire is powerful yet energy efficient, capable of replacing up to a 70W HPS wall pack while saving up to 78% in energy costs. With long-life LEDs, the TWS LED eliminates frequent lamp and ballast replacements associated with traditional technologies.

Ordering Information

EXAMPLE: TWS LED 1 50K 120 PE

TWS LED					
Series	Performance Package	Color Temperature	Voltage	Control Options	Finish
TWS LED	1 1017 lumens	50K 5000K ¹	120 120V ²	PE Photoelectric cell, button type	(blank) Dark bronze

Accessories

Ordered and shipped separately.

TWSWG

Wire Guard

NOTES

- Corrected color temperature (CCT) shown is nominal per ANSI C78, 377-2008.
- 120V driver operates on 120V.

FEATURES & SPECIFICATIONS

INTENDED USE

The TWS LED combines traditional wall pack design with high-output LEDs to provide an energy-efficient, low maintenance LED wall pack suitable for replacing up to 70W HPS fixtures. The traditional shape helps maintain building aesthetics when replacing only a portion of your building's wall packs. TWS LED is for outdoor applications such as personnel doors, loading areas, driveways and parking areas.

CONSTRUCTION

Back plate is die-cast aluminum. Front cover is impact-resistant polycarbonate which is fully gasketed. All electronics are protected in the upper housing. Housing is sealed against moisture and environmental contaminants.

FINISH

UV stabilized polycarbonate front cover has dark bronze color which provides superior resistance to corrosion and weathering and that can withstand extreme climate changes without cracking or peeling.

OPTICS

Protective polycarbonate lens covers the LEDs. Prismatic front cover and precision-molded reflector for superior uniformity and fixture spacing. Light engine is available in 5000K (69 min. CRI).

ELECTRICAL

Light engine consists of two high-powered, long-life, high-efficacy LEDs mounted on an internal aluminum heat sink to maximize heat dissipation and promote long life (L95/100,000 hours at 40°C). Driver and integral photocell operate at 120V and are fully enclosed in the upper housing. There are no user serviceable parts.

INSTALLATION

Back housing easily mounts to any recessed junction box. With all electronics in upper housing the open lower section makes wiring easy. Mount on any vertical surface. Not recommended in applications where a sprayed stream of water can come in direct contact with polycarbonate lens.

LISTINGS

UL Certified to US and Canadian safety standards for wet-location mounting higher than 4 feet off the ground.

Rated for -40°C to 40°C ambient temperature.

WARRANTY

Five-year limited warranty. Full warranty terms located at www.acuitybrands.com/CustomerResources/Terms_and_conditions.aspx.

Note: Specifications are subject to change without notice. Actual performance may differ as a result of end-user environment and application



SHOP DRAWING	
Reviewed by: Samuel Charbonneau	
Date: 17 juin 2016	
Reviewed	<input checked="" type="checkbox"/>
Reviewed as noted	<input type="checkbox"/>
Resubmit	<input type="checkbox"/>
Out for approval	
SIFEC NORTH INC.	

Performance Data

Lumen Output

Lumen values are from photometric tests performed in accordance with IESNA LM-79-08. Data is considered to be representative of the configurations shown, within the tolerances allowed by Lighting Facts. Actual performance may differ as a result of end-user environment and application.

Performance Package	Drive Current (mA)	CCT	System Watts	50K (5000K, 67 CRI)				
				Lumens	B	U	G	LPW
1	900	5000K	19W	1,017	1	3	1	54

Lumen Ambient Temperature (LAT) Multipliers

Use these factors to determine relative lumen output for average ambient temperatures from 0-40°C (32-104°F).

Ambient		Lumen Multiplier
0°C	32°F	1.03
10°C	50°F	1.02
20°C	68°F	1.01
25°C	77°F	1.00
30°C	86°F	0.99
40°C	104°F	0.98

Electrical Load

LED Package	Drive Current (mA)	System Watts	Current (A)			
			120	208	240	277
1	1000	19W	0.20	0.12	0.10	0.09

Projected LED Lumen Maintenance

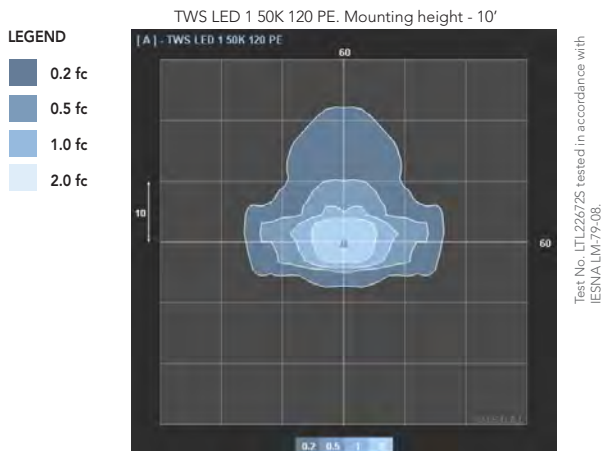
Data references the extrapolated performance projections in a **40°C ambient**, based on 10,000 hours of LED testing (tested per IESNA LM-80-08 and projected per IESNA TM-21-11).

To calculate LLF, use the lumen maintenance factor that corresponds to the desired number of operating hours below. For other lumen maintenance values, contact factory.

Operating Hours	0	25,000	50,000	55,000	100,000
Lumen Maintenance Factor	1.0	0.98	0.97	0.97	0.95

Photometric Diagrams

To see complete photometric reports or download .ies files for this product, visit the Lithonia Lighting TWS LED homepage. Tested in accordance with IESNA LM-79 and LM-80 standards



Lighting Facts Labels





TWP LED

LED Wall Luminaire

Catalog
Number

Notes

Type

SHOP DRAWING

Reviewed by: Samuel Charbonneau
Date: 17 Jun 2016Reviewed ☒
Reviewed as noted ☐
Resubmit ☐

Out for approval

SIFEC NORTH INC.

Hit the Tab key or mouse over the page to see all interactive elements.

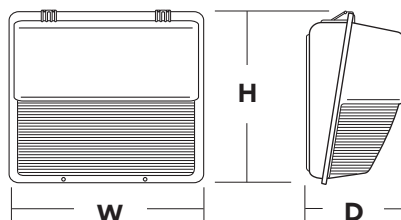
Specifications

Width: 16-1/8"
(41.0 cm)

Height: 15-1/2"
(39.4 cm)

Depth: 7-3/4"
(19.7 cm)

Weight: 15 lbs
(6.8 kg)



Introduction

The popular TWP luminaire is now available with LED technology. Cast in a traditional dayform, the TWP LED offers a classic appearance and is powered by advanced LEDs. A one-piece polycarbonate cover delivers enhanced durability and is vandal resistant, making the TWP LED ideal for lower mounting heights or high-traffic areas.

The new TWP LED luminaire is powerful yet energy efficient, capable of replacing up to a 250W metal halide luminaire while saving up to 77% in energy costs. Offering an expected service life of more than 20 years, the TWP LED eliminates frequent lamp and ballast replacements associated with traditional technologies.

Ordering Information

EXAMPLE: TWP LED 30C 700 50K T3M MVOLT DDBXD

TWP LED						
Series	Performance Package	Distribution	Voltage	Control Options	Other Options	Finish (required)
TWP LED	LEDs 10C 10 LEDs (one engine) 20C 20 LEDs (two engines) 30C 30 LEDs (one engine) Drive current 700 700 mA Color temperature 40K 4000 K 50K 5000 K	T3M Type III Medium	MVOLT ¹ 120¹ 208 ¹ 240 ¹ 277 ¹ 347 ² 480 ²	Shipped installed PE Photoelectric cell, button type ³	Shipped installed SF Single fuse (120, 277, 347V) ⁴ DF Double fuse (208, 240, 480V) ⁴ TP Tamper proof screws NOM NOM Certified SPD Separate surge protection ⁵ Shipped separately WG Wire guard ⁶	DDBXD Dark bronze DBLXD Black DWHXD White DDBTXD Textured dark bronze DBLBXD Textured black DWHGXD Textured white

Stock configurations are offered for shorter lead times:

Standard Part Number	Stock Part Number
TWP LED 10C 700 40K T3M MVOLT DDBXD	TWP LED 10C 40K
TWP LED 20C 700 40K T3M MVOLT DDBXD	TWP LED 20C 40K
TWP LED 30C 700 40K T3M MVOLT DDBXD	TWP LED 30C 40K
TWP LED 10C 700 50K T3M MVOLT DDBXD	TWP LED 10C 50K
TWP LED 20C 700 50K T3M MVOLT DDBXD	TWP LED 20C 50K
TWP LED 30C 700 50K T3M MVOLT DDBXD	TWP LED 30C 50K

Accessories

Ordered and shipped separately.

TWPWG U

Wire guard accessory⁷

NOTES

- MVOLT driver operates on any line voltage from 120-277V (50/60 Hz). Specify 120, 208, 240 or 277 options only when ordering with fusing (SF, DF options) or photocontrol (PE).
- Not available with 10C option.
- Must specify voltage; not available with MVOLT or 480 voltage options.
- Single fuse (SF) requires 120, 277 or 347 voltage option. Double fuse (DF) requires 208, 240 or 480 voltage option.
- See the electrical section on page 2 for more details.
- Also available as a separate accessory; see Accessories information at left.
- Requires field modification (only when ordered as a separate accessory).



Performance Data

Lumen Output

Lumen values are from photometric tests performed in accordance with IESNA LM-79-08. Data is considered to be representative of the configurations shown, within the tolerances allowed by Lighting Facts. Contact factory for performance data on any configurations not shown here.

LEDs	Drive Current (mA)	Performance Package	System Watts	Dist. Type	40K (4000 K, 70 CRI)					50K (5000 K, 70 CRI)				
					Lumens	B	U	G	LPW	Lumens	B	U	G	LPW
10C (10 LEDs)	700	10C 700 --K	26W	T3M	2,183	0	3	2	83	2197	0	3	2	84
20C (20 LEDs)	700	20C 700 --K	45W	T3M	4,207	0	3	3	93	4233	0	3	3	94
30C (30 LEDs)	700	30C 700 --K	67W	T3M	5,176	0	3	3	77	5208	0	3	3	77

Lumen Ambient Temperature (LAT) Multipliers

Use these factors to determine relative lumen output for average ambient temperatures from 0-40°C (32-104°F).

Ambient		Lumen Multiplier
0°C	32°F	1.02
10°C	50°F	1.01
20°C	68°F	1.00
25°C	77°F	1.00
30°C	86°F	1.00
40°C	104°F	0.98

Projected LED Lumen Maintenance

Data references the extrapolated performance projections for the **TWP LED 30C 700** platform in a **25°C ambient**, based on 10,000 hours of LED testing (tested per IESNA LM-80-08 and projected per IESNA TM-21-11).

To calculate LLF, use the lumen maintenance factor that corresponds to the desired number of operating hours below. For other lumen maintenance values, contact factory.

Operating Hours	0	25,000	50,000	100,000
Lumen Maintenance Factor	1.0	0.99	0.99	0.98

Electrical Load

LEDs	Drive Current (mA)	System Watts	Current (A)					
			120V	208V	240V	277V	347V	480V
10C	700	26 W	0.24	0.14	0.12	0.10	-	-
20C	700	45 W	0.42	0.24	0.21	0.18	0.14	0.10
30C	700	67 W	0.62	0.36	0.31	0.27	0.21	0.16

FEATURES & SPECIFICATIONS

INTENDED USE

The energy savings, long life and easy-to-install design of the TWP LED make it the smart choice for building-mounted doorway and pathway illumination for nearly any facility.

CONSTRUCTION

Die-cast aluminum rear housing has an impact-resistant, UV-stabilized polycarbonate front housing and refractor that is fully gasketed. Modular design allows for ease of maintenance. The LED driver is mounted to the front casting to thermally isolate it from the light engine for low operating temperature and long life. Housing is completely sealed against moisture and environmental contaminants.

FINISH

Exterior parts are protected by a zinc-infused Super Durable TGIC thermoset powder coat finish that provides superior resistance to corrosion and weathering. A tightly controlled multi-stage process ensures a minimum 3 mils thickness for a finish that can withstand extreme climate changes without cracking or peeling. Available in textured and non-textured finishes.

OPTICS

Protective polycarbonate lens covers the light engine's precision-molded proprietary acrylic lenses. Light engines are available in 4000K and 5000K configurations.

ELECTRICAL

Light engine(s) consist of 10 or 30 high-efficacy LEDs mounted to a metal-core circuit board and integral aluminum heat sink to maximize heat dissipation and promote long life (L94/100,000 hrs at 25°C). The electronic driver has a power factor of >90%, THD <20%, and a minimum 2.5 KV

surge rating. When ordering the SPD option, a separate surge protection device is installed within the luminaire which meets a minimum Category C low operation (per ANSI/IEEE C62.41.2).

INSTALLATION

Top 3/4" threaded wiring access. Back access through removable 3/4" knockout. Feed-thru wiring can be achieved by using a conduit tee. Mount on any flat, vertical surface.

LISTINGS

UL listed for wet locations. Rated for -40°C minimum ambient. DesignLights Consortium® (DLC) qualified product. Not all versions of this product may be DLC qualified. Please check the DLC Qualified Products List at www.designlights.org to confirm which versions are qualified.

WARRANTY

Five year limited warranty. Full warranty terms located at www.acuitybrands.com/CustomerResources/Terms_and_conditions.aspx.

Note: Actual performance may differ as a result of end-user environment and application. All values are design or typical values, measured under laboratory conditions at 25 °C. Specifications subject to change without notice.





AST - 2 PENDANT MOUNT STROBE WARNING LIGHT

APPLICATIONS:

- to visually indicate warnings or hazards in high noise level areas where audible signals may not be heard
- to indicate the starting and stopping of operations in a manufacturing environment
- to indicate faulty equipment

FEATURES:

- solid state power supply
- low power consumption (12 watts)
- intensity 2,000,000 candlepower (peak)
- Polycarbonate fresnel lens
- cast zinc alloy housing with a grey epoxy finish for superior corrosion resistance
- designed for intermittent visual signaling as well as longer duration signaling applications
- flash rate - 60 flashes/minute
- flash tube life - minimum 10 million flashes at 60 flashes/minute
- 3/4" conduit entry
- weatherproof

SHOP DRAWING

Reviewed by: Samuel Charbonneau

Date: 17 juin 2016

Reviewed



Reviewed as noted



Resubmit



Out for approval

SIFEC NORTH INC.



Made in Canada



Applied Strobe Technology Company Limited
INDUSTRIAL STROBE WARNING LIGHTS

8345 Stanley Avenue, Niagara Falls, Ontario, Canada L2E 6X8 905-374-3077, Fax 905-374-6114

U.S. Address: 2315 Whirlpool St., Suite #182, Niagara Falls, NY 14305

e-mail: sales@appliedstrobe.com

www.appliedstrobe.com

Page 905 of 2421

Temperature Range

-40 C to +85 C

Electrical Ratings

Supply Voltage Range	Frequency	Current Range (avg)	Inrush Current (max)
90 to 130 VAC	50/60Hz	.118 A to .090 A	.250 A
220 to 250 VAC	50/60Hz	.072 A to .055 A	.220 A
10 to 30 VDC	-	.8 A to .4 A	1.30 A
50 to 60 VDC	-	.360 A to .300 A	.820 A
90 to 130VDC	-	.175A to .090 A	.250 A
220 to 250VDC	-	.070A to .055 A	.220 A
15 to 30 VDC	-	.8 A to .4 A	1.30 A

Net Weight: 4.5 lbs

Ordering Information

Model No	Input Voltage
AST-2-90-130-AC	90 - 130 VAC
AST-2-220-250-AC	220 - 250 VAC
AST-2-10-30-DC	10 - 30 VDC
AST-2-90-130-DC	90 - 130 VDC
AST-2-220-250-DC	220 - 250 VDC
AST-2-50-60-DC	50 - 60 VDC

Lens Colors

AM	- Amber Lens
BL	- Blue Lens
RE	- Red Lens
GR	- Green Lens
CL	- Clear Lens

Ordering Example

AST-2-10-30-DC-RE

Replacement Parts

Circuit Board

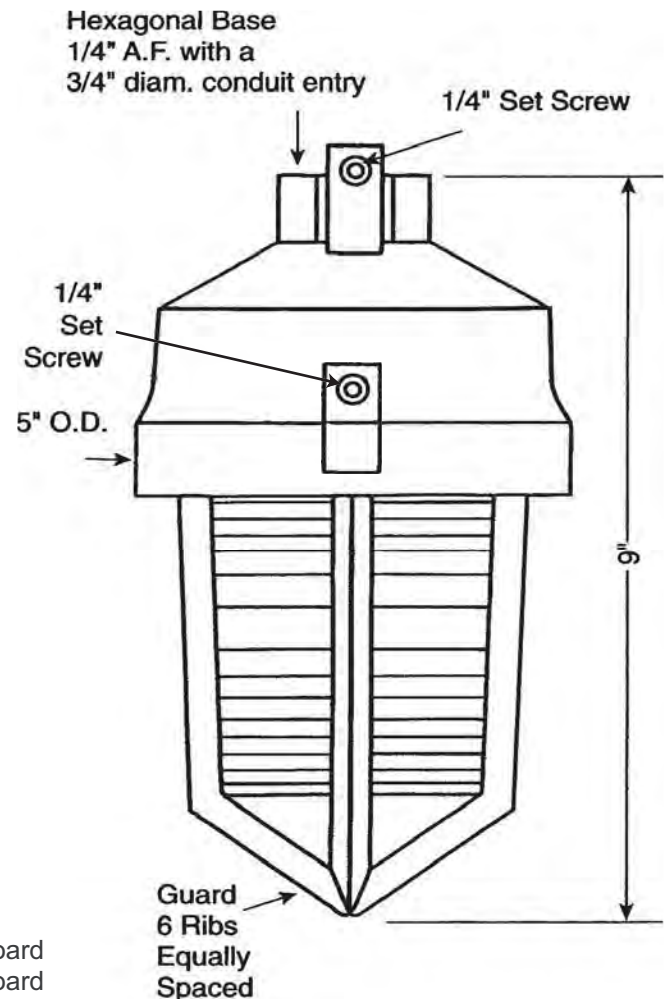
AST-2 - 90-130-AC -Board	90 - 130 VAC	Circuit Board
AST-2-220-250-AC -Board	220 - 250 VAC	Circuit Board
AST-2 - 10 - 30-DC -Board	10 - 30 VDC	Circuit Board
AST-2 - 90-130-DC -Board	90 - 130 VDC	Circuit Board
AST-2-220-250-DC -Board	220 - 250 VDC	Circuit Board
AST-2 - 50 - 60-DC -Board	50 - 60 VDC	Circuit Board

Flash Tube

AST-FT 3050 Flash Tube

Lenses

AST-2-Lens-RE	Red Lens
AST-2-Lens-AM	Amber Lens
AST-2-Lens-BL	Blue Lens
AST-2-Lens-GR	Green Lens
AST-2-Lens-CL	Clear Lens





LED-Dauerleuchte

LED Perm. Beacon

22X #00 XX

(vorläufiges techn. Datenblatt)
(provisional technical data sheet)

WERMA Signaltechnik
GmbH + Co. KG
Dürbheimer Straße 15
78604 Rietheim-Weilheim
Phone +49(0)7424 9557-0
Fax +49(0)7424 9557-44
info@werma.com

Elektrische Daten:

electrical specification

Einschaltstrom: max. 0,5A (24V)

starting current

Stromaufnahme: $I_{eff} \leq$ siehe Listecurrent consumption $I_{eff} \leq$ see list

Tonart: Dauerton

tone type continuous tone

Einschaltdauer: 100 % ED

duty cycle 100 %

Lebensdauer: max. 100.000 h

life duration

Bestell-Nr.:

order no.:

221 #00 75 24V AC/DC 45 mA BM 133g

221 #00 67 115V AC 25 mA BM 106g

221 #00 68 230V AC 25 mA BM 107g

224 #00 75 24V AC/DC 45 mA WM 144g

224 #00 67 115V AC 25 mA WM 142g

224 #00 68 230V AC 25 mA WM 142g

1 = rot 2 = grün 3 = gelb 4 = klar 5 = blau

1 = red 2 = green 3 = yellow 4 = clear 5 = blue

Mechanische Daten:

mechanical specification

Material Kalotte: PC

dome material

Material Adapte: PC/ABS-blend, schwarz

Adapter material PC/ABS-blend, black

Material Sockel: PA GF, schwarz

material base PA GF, black

Einbaulage: BM beliebig

installation position WM Kalotte nach oben

BM as required

WM dome facing upwards

Befestigung BM=Bodenmontage /

fixing WM=Winkelmontage

BM=Base mounting /

WM=Bracket mounting

Dichtung BM vorhanden

seal BM existing

Anschluss: CAGE CLAMP Technik bis

connection 2,5 mm² eindrätig

CAGE CLAMP technology up

to 2.5 mm² single wire

Kabeleinführung: BM: Durchgangsloch,

cable entry Kabeldurchmesser max.

10mm

WM: Kabelverschraubung

M12x1,5; Kabeldurchmesser

3 - 6 mm

BM: Through-hole, cable dia-

meter max. 10mm

WM: cable gland M12x1,5;

cable diameter 3 - 6 mm

Zugentlastung: Vorhanden bei WM

strain relief Existing at WM

Gewicht ca.:

Siehe Liste

weight approx.

See list

Temperatur:

-20° ... +50 °C

temperature

Schutzart:

IP65 in montiertem Zustand

protection rating

IP65 when mounted

Vorschriften:

regulations

Die zutreffenden EG-

Richtlinien werden erfüllt / UL-

Listung vorhanden

conforms to current

EU regulations / UL listed

SHOP DRAWING

Reviewed by: Samuel Charbonneau

Date: 17 juin 2016

Reviewed



Reviewed as noted



Resubmit



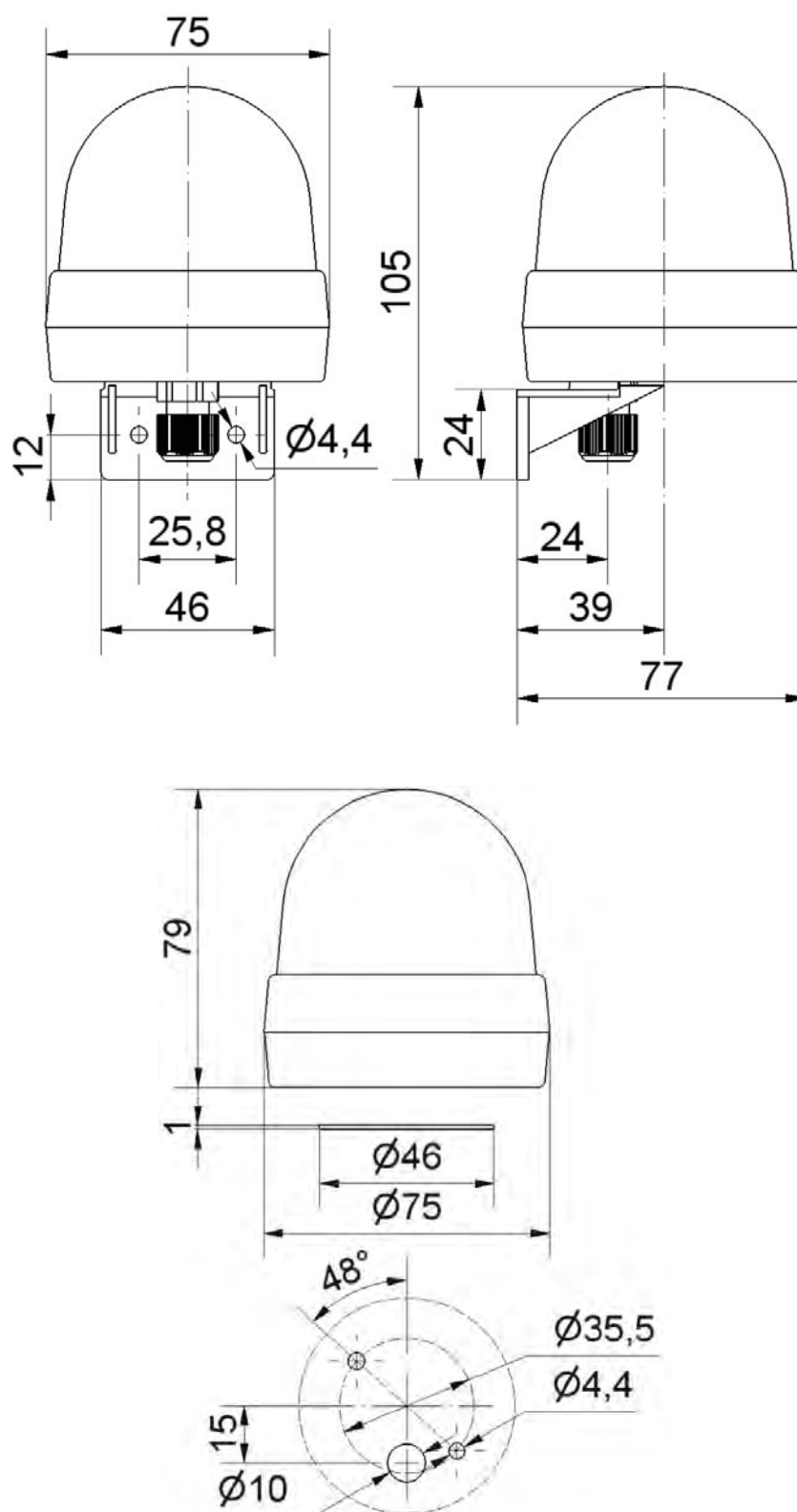
Out for approval

SIFEC NORTH INC.

Hinweis: Alle Angaben beziehen sich auf U_{nenn} und Raumtemperatur!Note: All electrical and life duration specifications refer to U_{nenn} and room temperature!

	Angelegt created	Bearbeitet edited	Geprüft checked	Freigegeben approved	Datenblatt-Nr. data sheet no.
Name name	Matwe	JBE	TS	Hö	312.221.001-01
Datum date	11.09.02	26.03.13	28.03.13	28.03.13	Seite 1 - 2 page 1 - 2

Ausdruck ist nur zur Information und wird bei Änderung nicht berücksichtigt. This printed copy is for information only and is subject to alternation.



Datenblatt-Nr.

data sheet no.

312.221.001-01

Seite 2 - 2 page 2 - 2

Exit Signs - Aimlight CARPW0636 1 M-2SM4LJ WHT/ATD

COMBO ALUMINUM

NBC2010 Compliant

LED 120/347VAC Input



Approvals:

CSA Certified to C22.2 #141 and C860

DESCRIPTION

The CARPW series of commercial combination extruded signs and battery units features a fully modern appearance. The extruded aluminum design provides for a rigid, durable and lightweight sign. Two PAR18 small style, front mounted heads are standard, PAR36 large style or MR16 type are optional. Available with either 6VDC or 12VDC.

CIRCUITRY

- LED ultra bright light source
- 120/347VAC Input, field selectable
- 1.9 Watt power consumption for LED exit portion of combination sign
- LED Emergency DC wattages as follows:
6VDC = 0.9W 12VDC = 0.9W
- Wattage capacities from 36 to 72 watts
- 30 minutes emergency power duration standard
- Momentary push button test switch
- Pilot LEDs for AC ON and CHARGE
- Fully automatic, constant voltage current limited charger
- Solid state design and construction with brownout and short circuit protection
- Temperature compensated
- Maintenance free, sealed lead acid battery

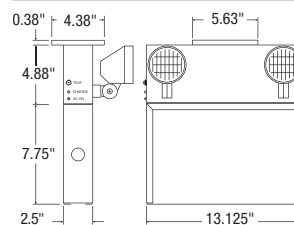


Comes standard with three pictogram legends for direction selection.

MECHANICAL

- Extruded aluminum construction
- Slide in/out captive faceplate(s) and backplate for rapid and simplified installation
- Universal spider knockout pattern stamped into backplate for junction box mounting
- Universal models include ceiling or end mount, field installable canopy kit c/w spider plate
- Multiple conduit entry knockouts
- White powder coat finish standard, other finishes and colors optional
- Front head mounted is standard, side mount is optional

DIMENSIONS



SHOP DRAWING

Reviewed by: Samuel Charbonneau

Date: 17 juin 2016

Reviewed

Reviewed as noted

Resubmit

Out for approval

SIFEC NORTH INC.

ORDERING GUIDE

Series	Nbr of faces	Mounting	Head/Lamp	Color	Options [†]
CARPW0636 CARPW0650 CARPW1236 CARPW1250 CARPW1272 (See model ratings table below)	U - Universal faces 1 - Single face 2 - Double face	M - Universal	0 - No heads 1SM - One PAR18 2SM - Two PAR18 1LG - One PAR36 2LG - Two PAR36	WHT - White (standard) BLK - Black GRY - Grey CUS - Custom color (specify)	VDR, WRG*, LXG, SPW, BKO, BNO, ATD, LPD, BTD, TDL** 0 - No indicators (double face only) D U UR DR DL UL Note: Indicators option available for single & double option only.

[†] For detailed options descriptions, please consult the options page. * Specify mounting. ** Specify AC voltage.

LAMP SELECTION

	6 Volts	12 Volts
PAR18 - Small head		
LED	3LJ, 4LJ	3LJ, 4LJ
Quartz halogen	08Q, 10Q, 12Q	08Q, 10Q, 12Q
Tungsten	09T	09T, 12T, 18T
MR16 - Small head c/w MR16 Lamp		
LED	4LR	4LR, 6LA, 7LA
Quartz halogen	08Q, 10Q, 12Q	08Q, 10Q, 12Q, 20Q
PAR36 - Large head		
Quartz halogen	08Q, 10Q, 12Q, 20Q	08Q, 10Q, 12Q, 20Q, 35Q
Tungsten	09T, 18T, 25T	09T, 18T, 25T
Quartz sealed beam	08SBQ, 10SBQ, 12SBQ, 20SBQ	08SBQ, 12SBQ, 20SBQ, 35SBQ, 55SBQ
Tungsten sealed beam	09SBT, 18SBT	N/A

MODEL RATINGS

Model	Voltage	Wattage capacities			
		30 min.	60 min.	90 min.	120 min.
CARPW0636	6V	36	18	12	9
CARPW0650	6V	50	25	16	12
CARPW1236	12V	36	18	12	9
CARPW1250	12V	50	25	16	12
CARPW1272	12V	72	36	24	18

