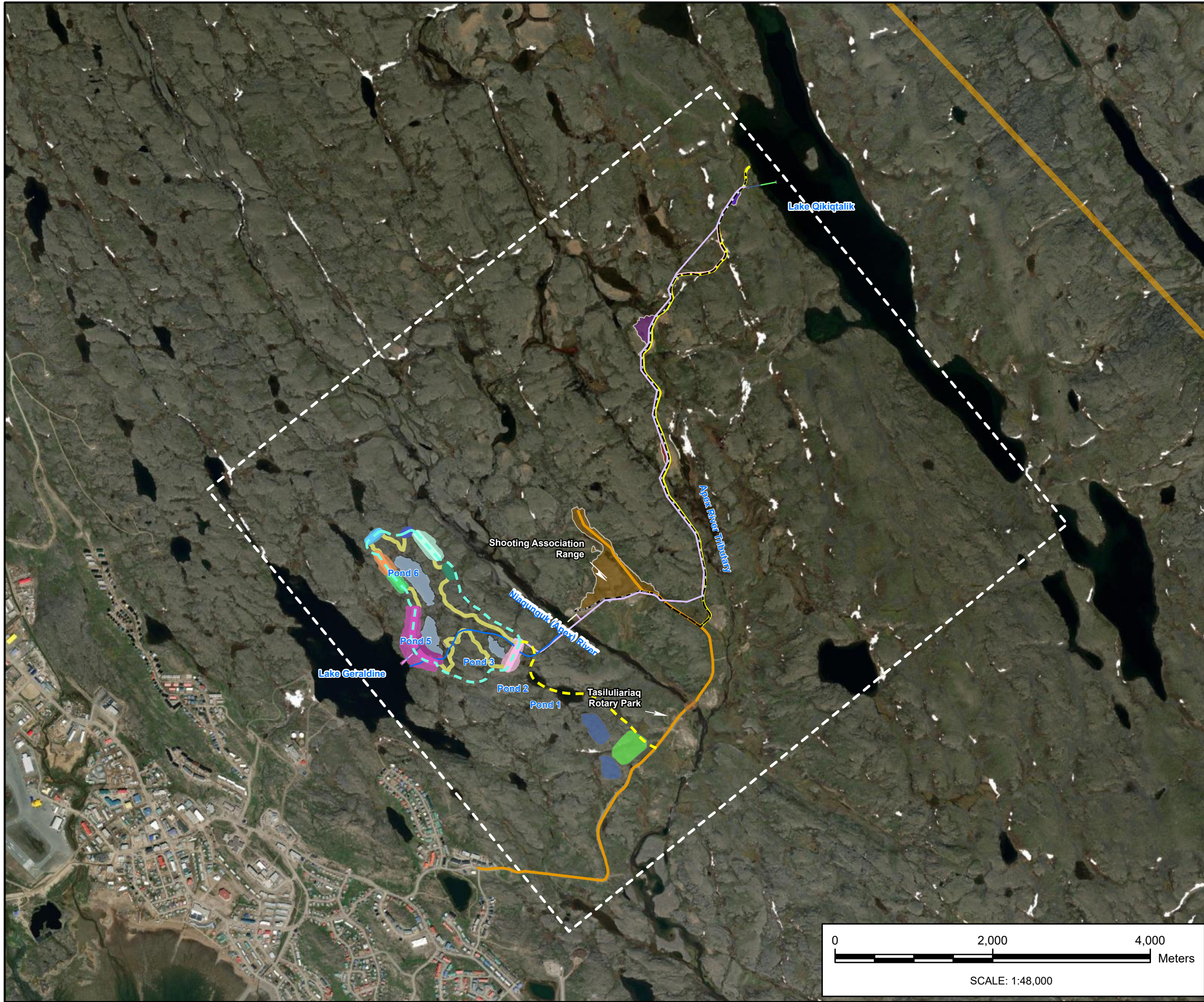


ATTACHMENT 8

LTWP Site Plans

City: SYR Div/Group: IM/DV Created By: J.RAPP Last Saved By: mayyar7350
T:_ENV\City of Iqaluit\Pro\Terrestrial Wildlife and Habitat.aprx Fig 1 : Long Term Water Project Components 12/16/2024 9:59 PM



LEGEND

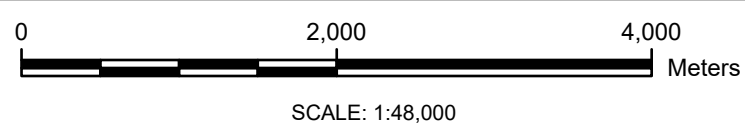
- SITE AREA
- ROAD TO UNNAMED LAKE
- ROAD TO NOWHERE
- PROPOSED ACCESS ROAD
- ALIGNMENTS AND SURFACE BORDER
- PROPOSED 150MMØ AIRBURST LINE
- PROPOSED 2X750Ø HDPE PIPES
- PROPOSED CONNECTION SYSTEM
- PROPOSED INTAKE STATION
- INTAKE (APPROX. 55M)
- PUMPHOUSE/PIPELINE CONDUIT
- PROPOSED BORROW 1: SHOOTING RANGE
- PROPOSED BORROW 2: LOWER SAND DEPOSIT
- PROPOSED BORROW 3: UPPER SAND DEPOSIT
- PROPOSED BORROW 4: QIKIQTALIK ESKER
- PROPOSED PUMPING STATION
- PROPOSED SCREENING
- 50M BUFFER BRIDGE ROAD TO NO WHERE
- RESERVOIR FOOTPRINT
- DAM1
- DYKE2
- DYKE3
- DYKE4
- DYKE5
- DYKE6
- DYKE7 (SPILLWAY)
- DYKE8
- WATER
- BUILDINGS
- PROPOSED LAYDOWN AREA
- PROPOSED QUARRY AREAS
- PUMP STATION
- MUNICIPAL BOUNDARY OF THE CITY OF IQALUIT

Image source: Esri, Maxar, Earthstar Geographics, and the GIS User Community.
Date: 2022/07/08

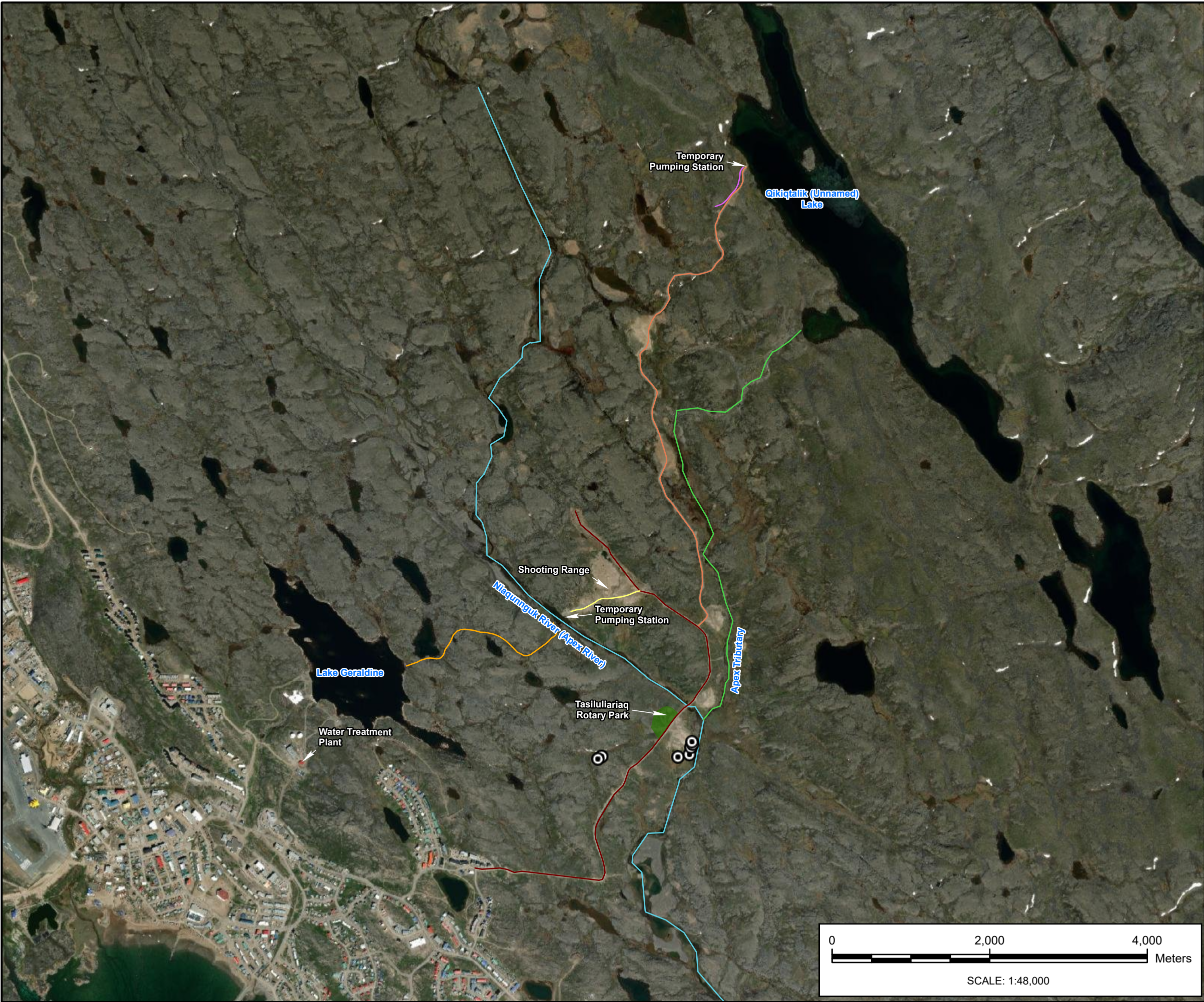
NUNAVUT PLANNING COMMISSION APPLICATION
CITY OF IQALUIT

LONG TERM WATER PROJECT COMPONENTS

FIGURE 1



City: SYR Div/Group: IM/DV Created By: J.RAPP Last Saved By: mayyar7350
T:_ENV\City of Iqaluit\ProCity of Iqaluit.aprx Fig 1 : Existing Environment\11/20/2023 11:26 AM



LEGEND

- STRUCTURES
- ROAD TO NOWHERE
- ROTARY PARK
- EXISTING_ENVIRONMENT
- APEX RIVER
- APEX TRIBUTARY
- ACCES ROAD TO APEX RIVER
- EMERGENCY PIPELINES
- IQALUIT 2019 EMERGENCY WATER SUPPLY PROJECT
- IQALUIT 2019 EMERGENCY WATER SUPPLY PROJECT - NEW ROAD
- RIVER (EMERGENCY WATER SUPPLY)

Image source: Esri, Maxar, Earthstar Geographics,
and the GIS User Community.
Date: 2022/07/08



LONG TERM WATER PROJECT IN IQALUIT, NUNAVUT
CITY OF IQALUIT

EXISTING ENVIRONMENT

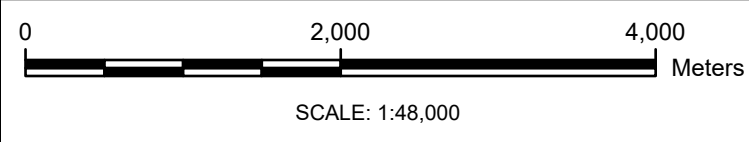
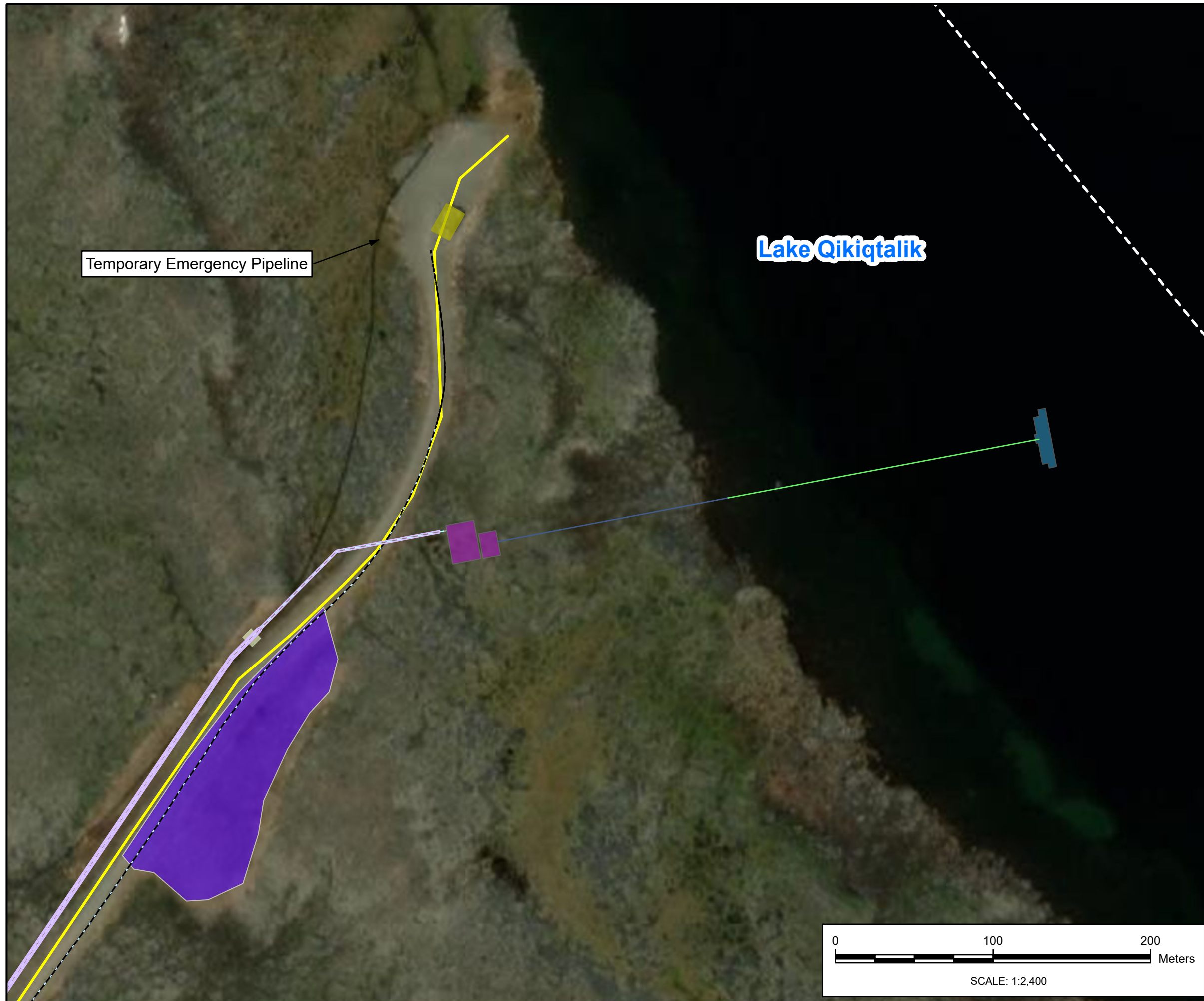


FIGURE
1-1

City: SYR Div/Group: IM/DV Created By: J.RAPP Last Saved By: mayyar7350
T:_ENV\City of Iqaluit\Pro\Terrestrial Wildlife and Habitat.aprx Fig 2 Lake Qikiqtalik Intake and Raw Water Pump Station 12/18/2024 9:08 AM



LEGEND

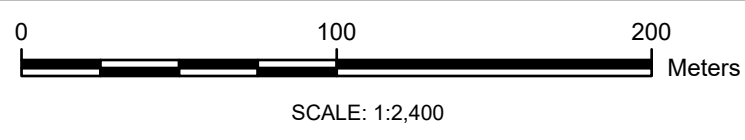
- SITE AREA
- ROAD TO UNNAMED LAKE
- PROPOSED 150MMØ AIRBURST LINE
- PROP. 750MMØ INTAKE
- ROAD
- WATER CONVEYANCE PIPELINE
- PROPOSED BORROW 4: QIKIQTALIK ESKER
- LAKE QIKIQTALIK PUMP STATION
- PROPOSED SCREENING
- BUILDINGS
- DECOMMISSIONED EMERGENCY PUMP STATION

Image source: Esri, Maxar, Earthstar Geographics, and the GIS User Community.
Date: 2022/07/08

NUNAVUT PLANNING COMMISSION APPLICATION
CITY OF IQALUIT

**LAKE QIKIQTALIK INTAKE AND
RAW WATER PUMP STATION**

ARCADIS | **FIGURE 2**



City: SYR Div/Group: IM/DV Created By: J.RAPP Last Saved By: mayyar7350
T:_ENV\City of Iqaluit\Pro\Terrestrial Wildlife and Habitat.aprx Fig 3 Apex River Intake and Raw Water Pump Station12/18/2024 9:17 AM



LEGEND

- SITE AREA
- INTAKE (APPROX. 55M)
- PUMPHOUSE/PIPELINE CONDUIT
- ROAD
- WATER CONVEYANCE PIPELINE
- TEMPORARY EMERGENCY PIPELINE
- PROPOSED BORROW 1: SHOOTING RANGE
- APEX RIVER PUMP STATION
- THREE SUBMERSIBLE PUMPS
- APEX RIVER EMERGENCY PUMP STATION

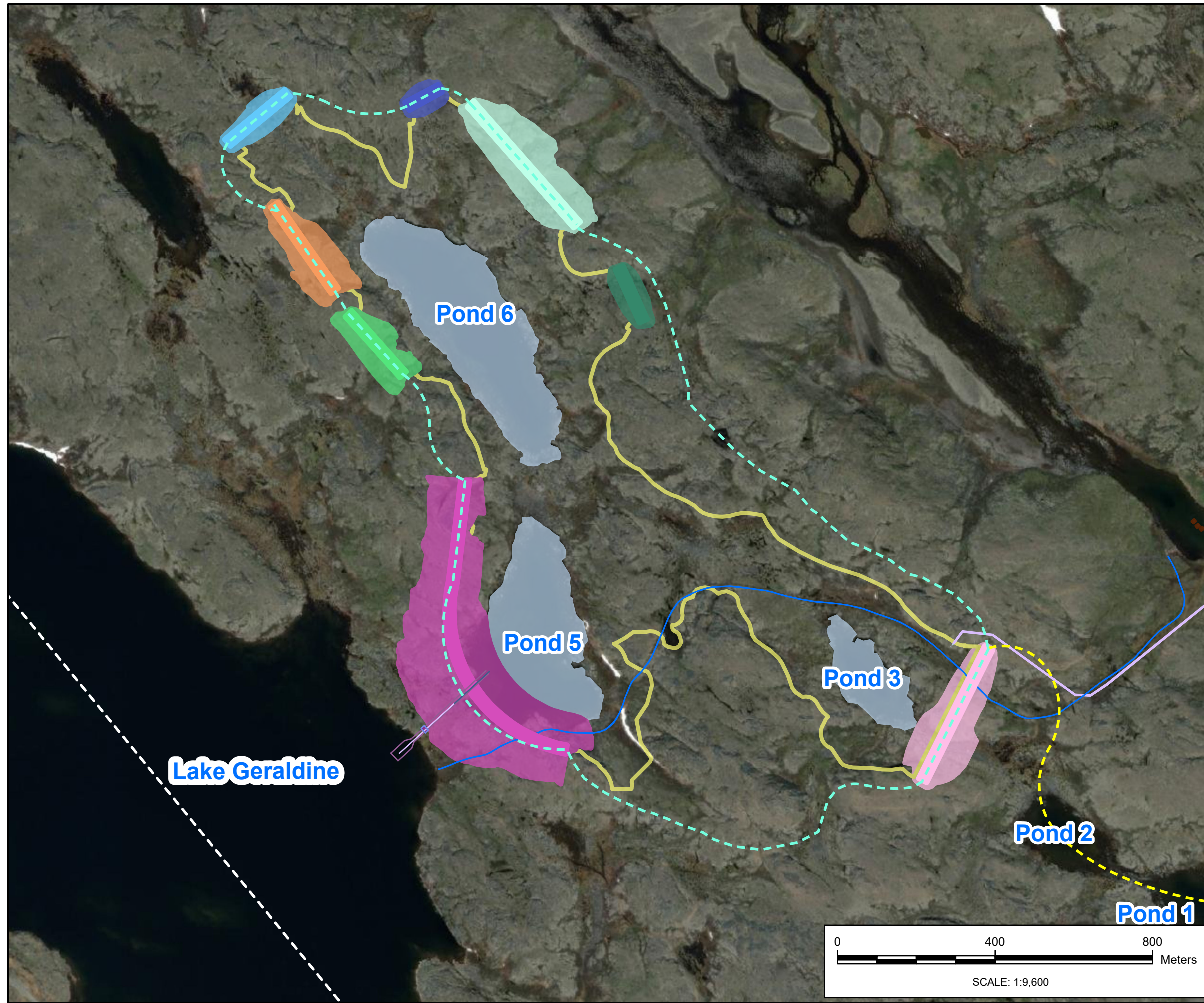
Image source: Esri, Maxar, Earthstar Geographics, and the GIS User Community.
Date: 2022/07/08

NUNAVUT PLANNING COMMISSION APPLICATION
CITY OF IQALUIT

**APEX RIVER INTAKE AND
RAW WATER PUMP STATION**

ARCADIS | **FIGURE 3**

City: SYR Div/Group: MIDV Created By: J.RAPP Last Saved By: mayyar7350
T:_ENV\City of Iqaluit\Pro\Terrestrial Wildlife and Habitat.aprx Fig 4 New Reservoir Dams and Dike Locations12/18/2024 9:26 AM



LEGEND

- SITE AREA
- PROPOSED ACCESS ROAD
- RING ROAD
- APEX RIVER TO LAKE GERALDINE PIPELINE
- PROPOSED CONNECTION SYSTEM
- PROPOSED INTAKE
- WATER CONVEYANCE PIPELINE
- LAKE QIKIQTALIK PUMP STATION
- RESERVOIR FOOTPRINT
- DAM1
- DYKE2
- DYKE3
- DYKE4
- DYKE5
- DYKE6
- DYKE7 (SPILLWAY)
- DYKE8
- WATER

Image source: Esri, Maxar, Earthstar Geographics,
and the GIS User Community.
Date: 2022/07/08



NUNAVUT PLANNING COMMISSION APPLICATION
CITY OF IQALUIT

NEW RESERVOIR DAMS AND
DIKE LOCATIONS



FIGURE
4