

## **ATTACHMENT 36**

### **North 40 Landfill Construction Summary Report**



## CONSTRUCTION SUMMARY REPORT

CITY OF IQALUIT  
Department of Engineering and Capital Projects



### SERVICE CONTRACT INFORMATION

Project/ Contract Title:	Solid Waste Landfill		
Service Contract #:	SC	Consultant:	Dillon Consulting Limited
City Representative:	Kevin Kerr	Consultant PM:	Sarah Devereaux

### PROJECT SUMMARY

Engineer on Record (designer) confirms project was constructed in line with design drawings, with construction changes noted on the record drawing. ☐

### SCHEDULE SUMMARY

Planned Contract Start Date	Actual Contract Start Date	Planned Contract Completion Date	Actual Contract Completion Date
July 15, 2022	August 15, 2022	August 31, 2024	November 9, 2024

### APPENDICES

Appendix A: Solid Waste Landfill Record Drawing

### SIGN-OFF

Christopher Shortall

Engineer of Record Name

Signature

December 19, 2025

Date

Iqaluit



# CITY OF IQALUIT SOLID WASTE LANDFILL RECORD



KEY PLAN

DILLON PROJECT: 19-9543  
DATE: NOVEMBER 06, 2024



Iqaluit

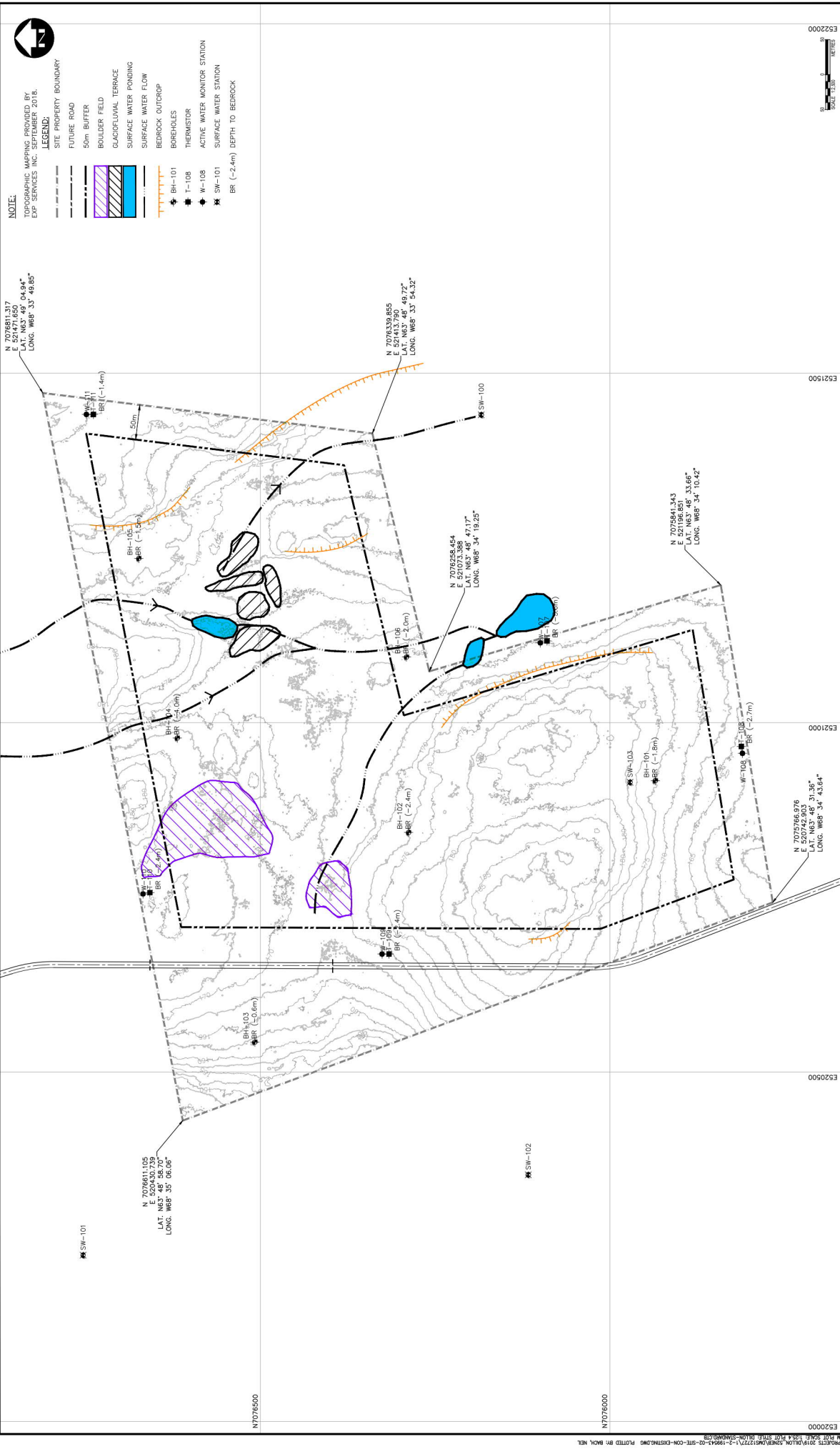


CITY OF IQALUIT  
SOLID WASTE LANDFILL

DRAWING INDEX - LANDFILL	
DWG.	DESCRIPTION
LF-001	EXISTING CONDITIONS SITE PLAN
LF-002	PERMAFROST MAP
LF-003	PROPOSED LANDFILL FACILITY LAYOUT
LF-004	EROSION CONTROL SITE PLAN & DETAILS
LF-005	SOUTH PERIMETER ROAD - PLAN & PROFILE
LF-006	SOUTH PERIMETER ROAD SECTIONS - 0+020 TO 0+200
LF-007	SOUTH PERIMETER ROAD SECTIONS - 0+220 TO 0+360
LF-008	WEST PERIMETER ROAD - PLAN & PROFILE
LF-009	WEST PERIMETER ROAD SECTIONS - 0+060 TO 0+200
LF-010	LEACHATE LAGOONS ROAD - PLAN & PROFILE
LF-011	LEACHATE LAGOONS ROAD SECTIONS - 0+080 TO 0+260
LF-012	CELL 1 ROAD - PLAN & PROFILE & SECTIONS
LF-013	CELL 1 DITCH - PLAN & PROFILE
LF-014	CELL 1 DITCH SECTIONS - 0+020 TO 0+120
LF-015	CELL 1 DITCH SECTIONS - 0+140 TO 0+240
LF-016	CELL 1 CUT AREA
LF-017	CELL 1 TOP OF ROUGH GRADED SITE
LF-018	CELL 1 TOP OF LEACHATE COLLECTION GEOMEMBRANE
LF-019	CELL 1 TOP OF LINER SYSTEM
LF-020	CELL 1 SECTIONS 1 & 2
LF-021	CELL 1 SECTIONS 3 & 4
LF-022	CELL 1 SECTIONS 5 & 6
LF-023	CELL 1 SECTIONS 7 & 8
LF-024	CELL SECTIONS 9 & 10
LF-025	LEACHATE LAGOONS CUT AREA
LF-026	LEACHATE LAGOONS - PLAN & PROFILE
LF-027	LEACHATE LAGOONS - SECTIONS 1 TO 6
LF-028	LEACHATE LAGOONS SECTIONS & DETAILS
LF-029	LINER DETAILS
LF-030	SECTIONS AND DETAILS
LF-031	MISCELLANEOUS DETAILS
LF-032	ACTIVE AREA DRAIN PIPE DETAILS







Conditions of Use

Verify elevations and/or dimensions on drawing prior to use. Report any discrepancies to Dillon Consulting Limited. Do not modify drawing, in whole or in part, or use it for purposes other than those intended without written permission from Dillon Consulting Limited.

Originally Stamped

C. R. Shortall

Originally Stamped

K. G. Barnes

RECORD DRAWING

THE ASSOCIATION OF PROFESSIONAL ENGINEERS OF THE PROVINCE OF ONTARIO  
REGISTERED PROFESSIONAL ENGINEER  
Dillon Consulting  
2022.11.18

Iqaluit

DILLON CONSULTING

NO.	REVISION	DATE	BY	CHKD.	APP'D.
1	ISSUED FOR APPROVAL	2022/11/18	K.S.		
2	REVIEW	2022/11/18	K.S.		
3	REVIEW	2022/11/18	K.S.		
4	ISSUED FOR APPROVAL	2022/11/18	K.S.		
5	REVIEW	2022/11/18	K.S.		
6	REVIEW	2022/11/18	K.S.		
7	ISSUED FOR APPROVAL	2022/11/18	K.S.		
8	REVIEW	2022/11/18	K.S.		
9	REVIEW	2022/11/18	K.S.		
10	ISSUED FOR APPROVAL	2022/11/18	K.S.		
11	REVIEW	2022/11/18	K.S.		
12	REVIEW	2022/11/18	K.S.		
13	ISSUED FOR APPROVAL	2022/11/18	K.S.		
14	REVIEW	2022/11/18	K.S.		
15	REVIEW	2022/11/18	K.S.		
16	ISSUED FOR APPROVAL	2022/11/18	K.S.		
17	REVIEW	2022/11/18	K.S.		
18	REVIEW	2022/11/18	K.S.		
19	ISSUED FOR APPROVAL	2022/11/18	K.S.		
20	REVIEW	2022/11/18	K.S.		
21	REVIEW	2022/11/18	K.S.		
22	ISSUED FOR APPROVAL	2022/11/18	K.S.		
23	REVIEW	2022/11/18	K.S.		
24	REVIEW	2022/11/18	K.S.		
25	ISSUED FOR APPROVAL	2022/11/18	K.S.		
26	REVIEW	2022/11/18	K.S.		
27	REVIEW	2022/11/18	K.S.		
28	ISSUED FOR APPROVAL	2022/11/18	K.S.		
29	REVIEW	2022/11/18	K.S.		
30	REVIEW	2022/11/18	K.S.		
31	ISSUED FOR APPROVAL	2022/11/18	K.S.		
32	REVIEW	2022/11/18	K.S.		
33	REVIEW	2022/11/18	K.S.		
34	ISSUED FOR APPROVAL	2022/11/18	K.S.		
35	REVIEW	2022/11/18	K.S.		
36	REVIEW	2022/11/18	K.S.		
37	ISSUED FOR APPROVAL	2022/11/18	K.S.		
38	REVIEW	2022/11/18	K.S.		
39	REVIEW	2022/11/18	K.S.		
40	ISSUED FOR APPROVAL	2022/11/18	K.S.		
41	REVIEW	2022/11/18	K.S.		
42	REVIEW	2022/11/18	K.S.		
43	ISSUED FOR APPROVAL	2022/11/18	K.S.		
44	REVIEW	2022/11/18	K.S.		
45	REVIEW	2022/11/18	K.S.		
46	ISSUED FOR APPROVAL	2022/11/18	K.S.		
47	REVIEW	2022/11/18	K.S.		
48	REVIEW	2022/11/18	K.S.		
49	ISSUED FOR APPROVAL	2022/11/18	K.S.		
50	REVIEW	2022/11/18	K.S.		
51	REVIEW	2022/11/18	K.S.		
52	ISSUED FOR APPROVAL	2022/11/18	K.S.		
53	REVIEW	2022/11/18	K.S.		
54	REVIEW	2022/11/18	K.S.		
55	ISSUED FOR APPROVAL	2022/11/18	K.S.		
56	REVIEW	2022/11/18	K.S.		
57	REVIEW	2022/11/18	K.S.		
58	ISSUED FOR APPROVAL	2022/11/18	K.S.		
59	REVIEW	2022/11/18	K.S.		
60	REVIEW	2022/11/18	K.S.		
61	ISSUED FOR APPROVAL	2022/11/18	K.S.		
62	REVIEW	2022/11/18	K.S.		
63	REVIEW	2022/11/18	K.S.		
64	ISSUED FOR APPROVAL	2022/11/18	K.S.		
65	REVIEW	2022/11/18	K.S.		
66	REVIEW	2022/11/18	K.S.		
67	ISSUED FOR APPROVAL	2022/11/18	K.S.		
68	REVIEW	2022/11/18	K.S.		
69	REVIEW	2022/11/18	K.S.		
70	ISSUED FOR APPROVAL	2022/11/18	K.S.		
71	REVIEW	2022/11/18	K.S.		
72	REVIEW	2022/11/18	K.S.		
73	ISSUED FOR APPROVAL	2022/11/18	K.S.		
74	REVIEW	2022/11/18	K.S.		
75	REVIEW	2022/11/18	K.S.		
76	ISSUED FOR APPROVAL	2022/11/18	K.S.		
77	REVIEW	2022/11/18	K.S.		
78	REVIEW	2022/11/18	K.S.		
79	ISSUED FOR APPROVAL	2022/11/18	K.S.		
80	REVIEW	2022/11/18	K.S.		
81	REVIEW	2022/11/18	K.S.		
82	ISSUED FOR APPROVAL	2022/11/18	K.S.		
83	REVIEW	2022/11/18	K.S.		
84	REVIEW	2022/11/18	K.S.		
85	ISSUED FOR APPROVAL	2022/11/18	K.S.		
86	REVIEW	2022/11/18	K.S.		
87	REVIEW	2022/11/18	K.S.		
88	ISSUED FOR APPROVAL	2022/11/18	K.S.		
89	REVIEW	2022/11/18	K.S.		
90	REVIEW	2022/11/18	K.S.		
91	ISSUED FOR APPROVAL	2022/11/18	K.S.		
92	REVIEW	2022/11/18	K.S.		
93	REVIEW	2022/11/18	K.S.		
94	ISSUED FOR APPROVAL	2022/11/18	K.S.		
95	REVIEW	2022/11/18	K.S.		
96	REVIEW	2022/11/18	K.S.		
97	ISSUED FOR APPROVAL	2022/11/18	K.S.		
98	REVIEW	2022/11/18	K.S.		
99	REVIEW	2022/11/18	K.S.		
100	ISSUED FOR APPROVAL	2022/11/18	K.S.		

CITY OF IQALUIT

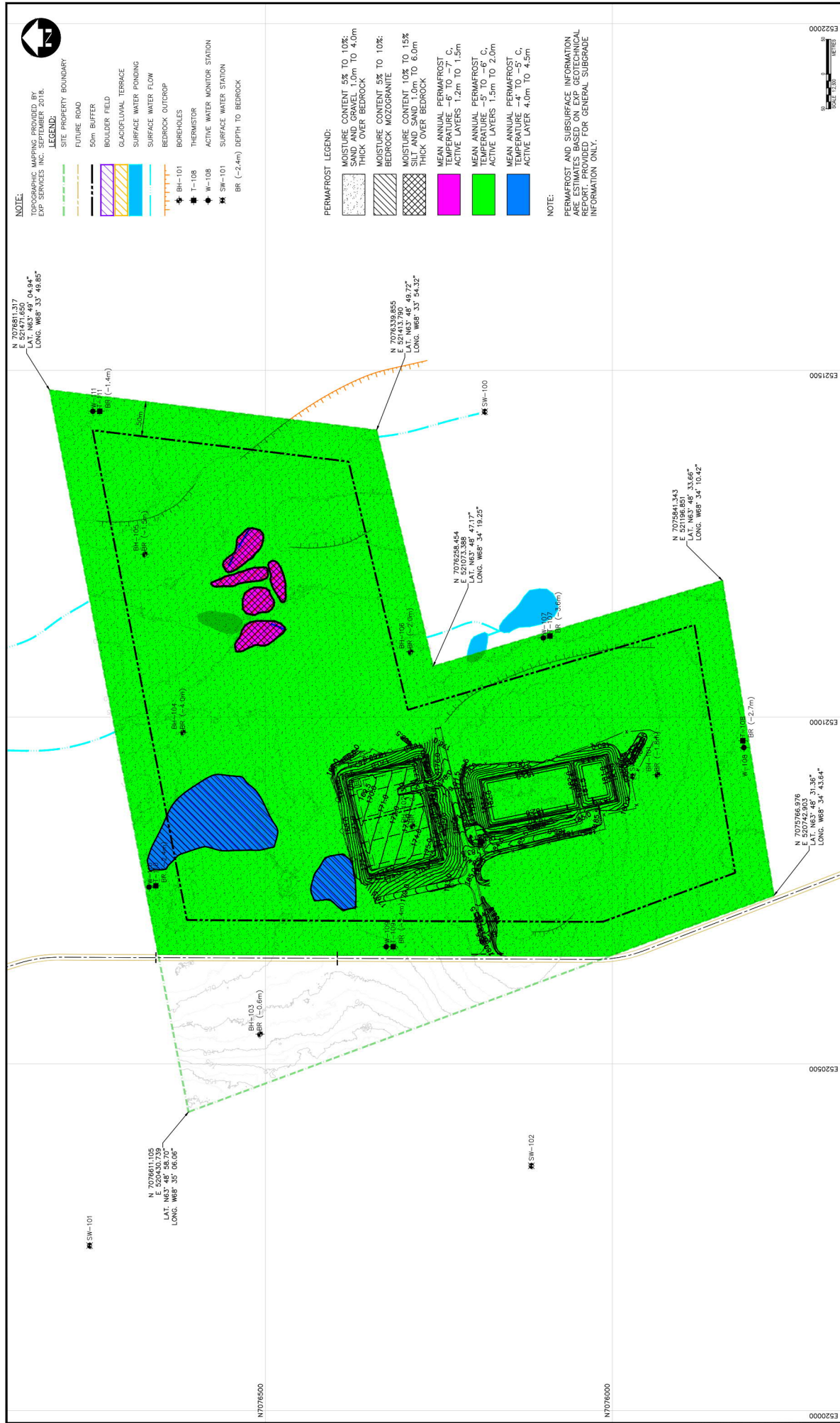
SOLID WASTE LANDFILL

19-9543

19-9543

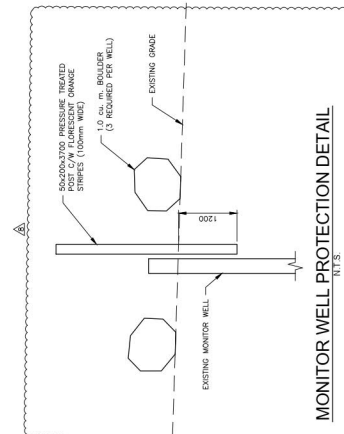
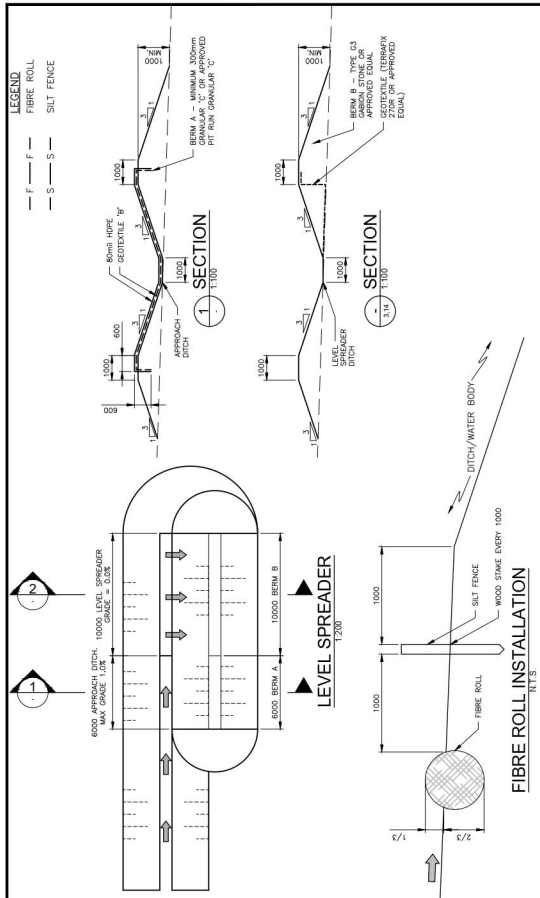
EXISTING CONDITIONS SITE PLAN

LF-C01

[illegible]







OTE: ALL ENVIRONMENTAL PROTECTION WORK TO BE CONDUCTED IN ACCORDANCE WITH:

- ) THE ENVIRONMENTAL PROTECTION PLAN - CONSTRUCTION PHASE
- ) THE ENVIRONMENTAL PROTECTION PLAN - EROSION AND SEDIMENT PLAN
- ) CONTRACTOR TO PROTECT EXISTING MONITORING WELLS; DAMAGED WELLS SHALL BE THE RESPONSIBILITY OF THE CONTRACTOR TO REPAIR.

[illegible]

RECORD DRAWING

THE ASSOCIATION OF  
PROFESSIONAL ENGINEERS,  
GEOLOGISTS AND GEOPHYSICISTS  
OF THE NORTH-WEST TERRITORIES  
**PERMIT NUMBER  
P 010**  
DILLON CONSULTING  
LIMITED

Iqaluit



**DILLON**  
CONSULTING

PROJECT NO: 19-0543	CITY OF OAKLUIT SOLID WASTE LANDFILL
SHEET NO.:	EROSION CONTROL SITE PLAN & DETAILS
PROJECT NO.:	LF-C00

**Conditions of Use**

Verify elevations and/or dimensions on drawing prior to use. Report any discrepancies to Dillon Consulting Limited.

Do not scale dimensions from drawing.

Do not modify drawing, re-use it, or use it for purposes other than those intended at the time of its preparation without prior written permission from Dillon Consulting Limited.

Originally Stamped  
By  
C. R. Shortall

Originally Stamped  
By  
K. G. Barnes

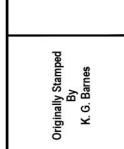
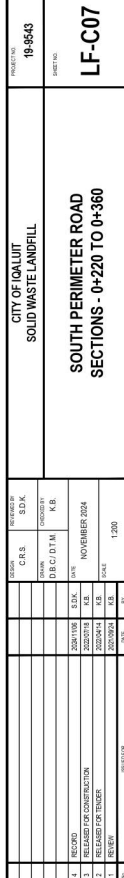
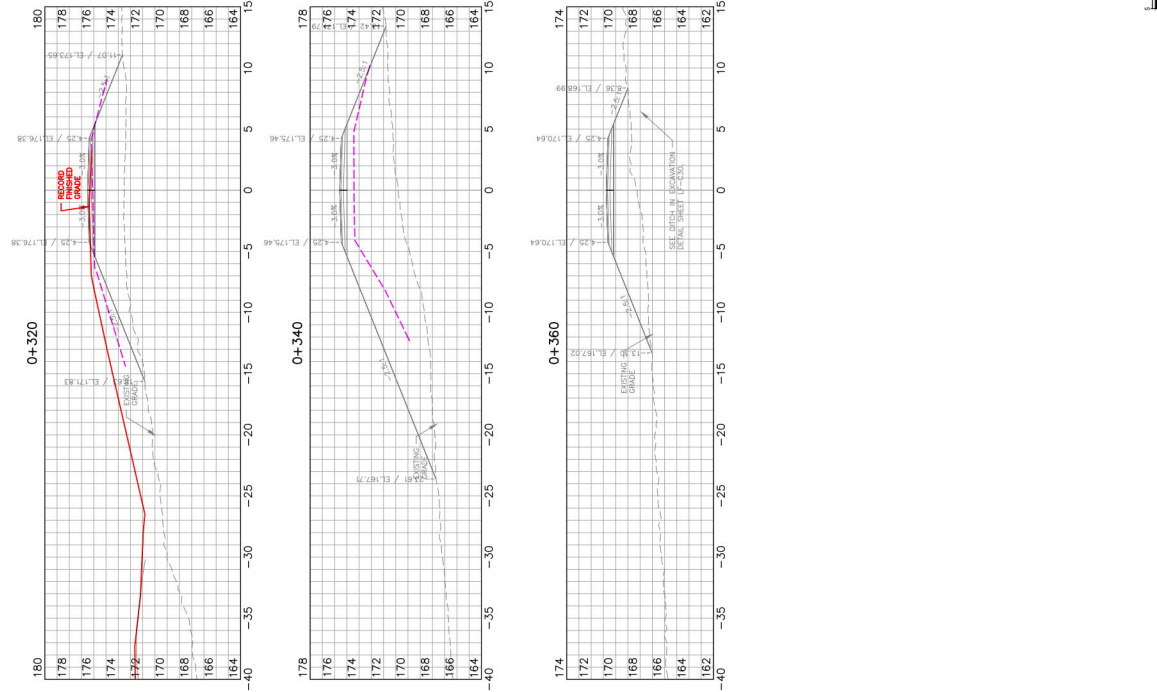
FILENAME: C:\PW WORKING DIRECTORY\PROJECTS 2019\DELTON\_S2NEB\DWG\127277\4-199543-02-SITE-CON-EROSION.DWG PLOTTED BY: BACH, NEL  
PLOT DATE: 2024-11-06 @ 4:27:00 PM PLOT SCALE: 1/254 PLOT STYLE: DELTON-STD.AUTOCRTB







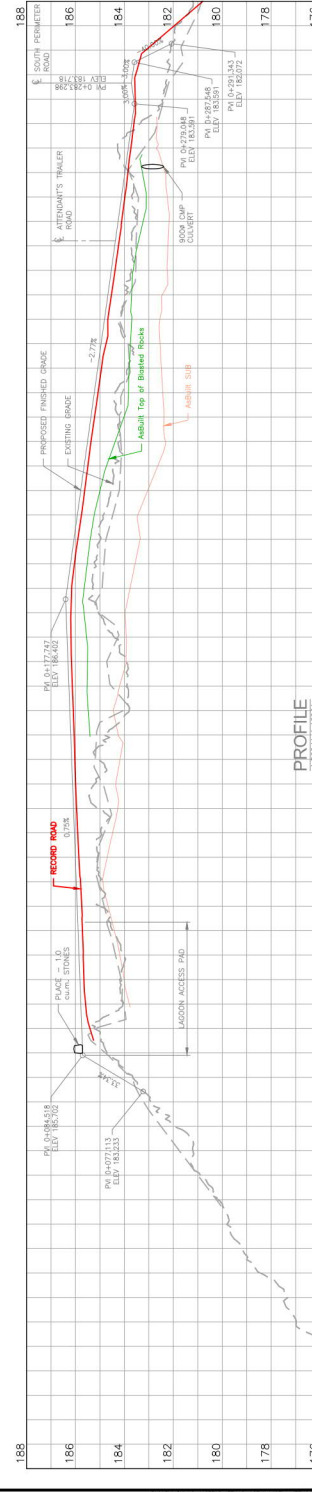
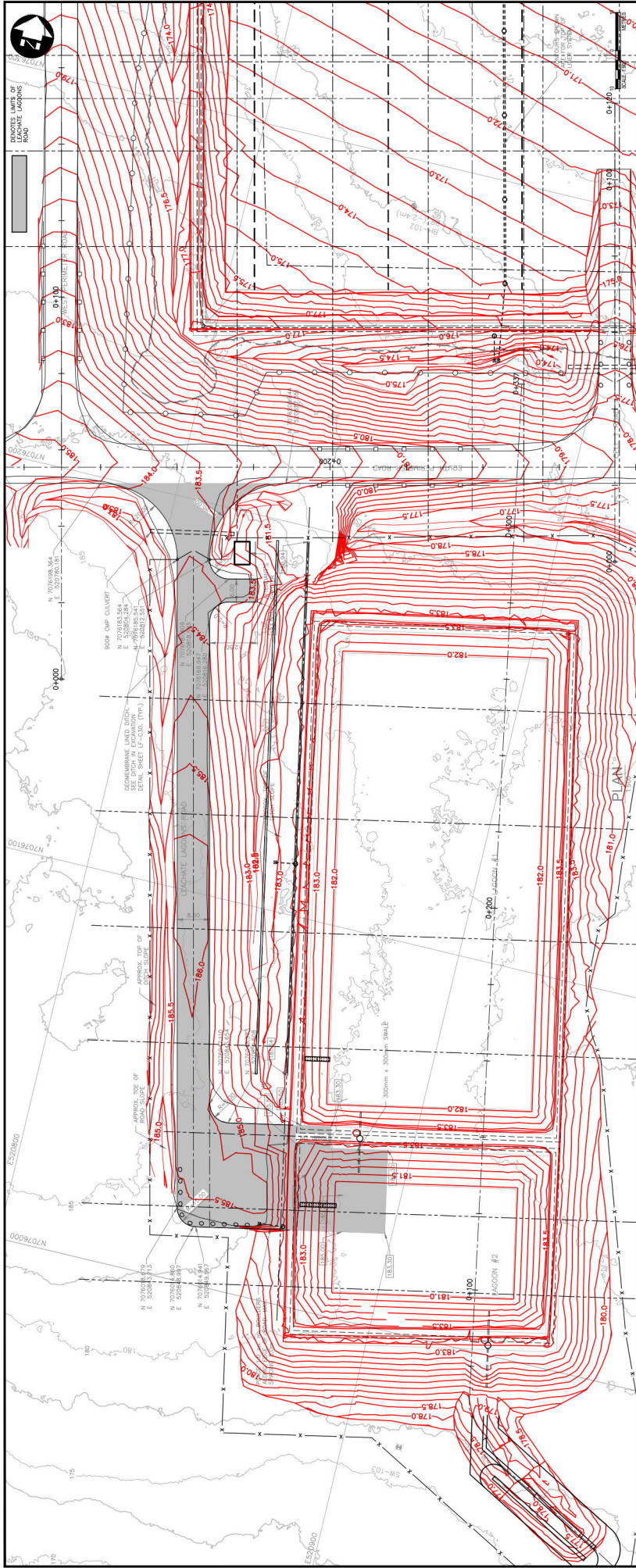




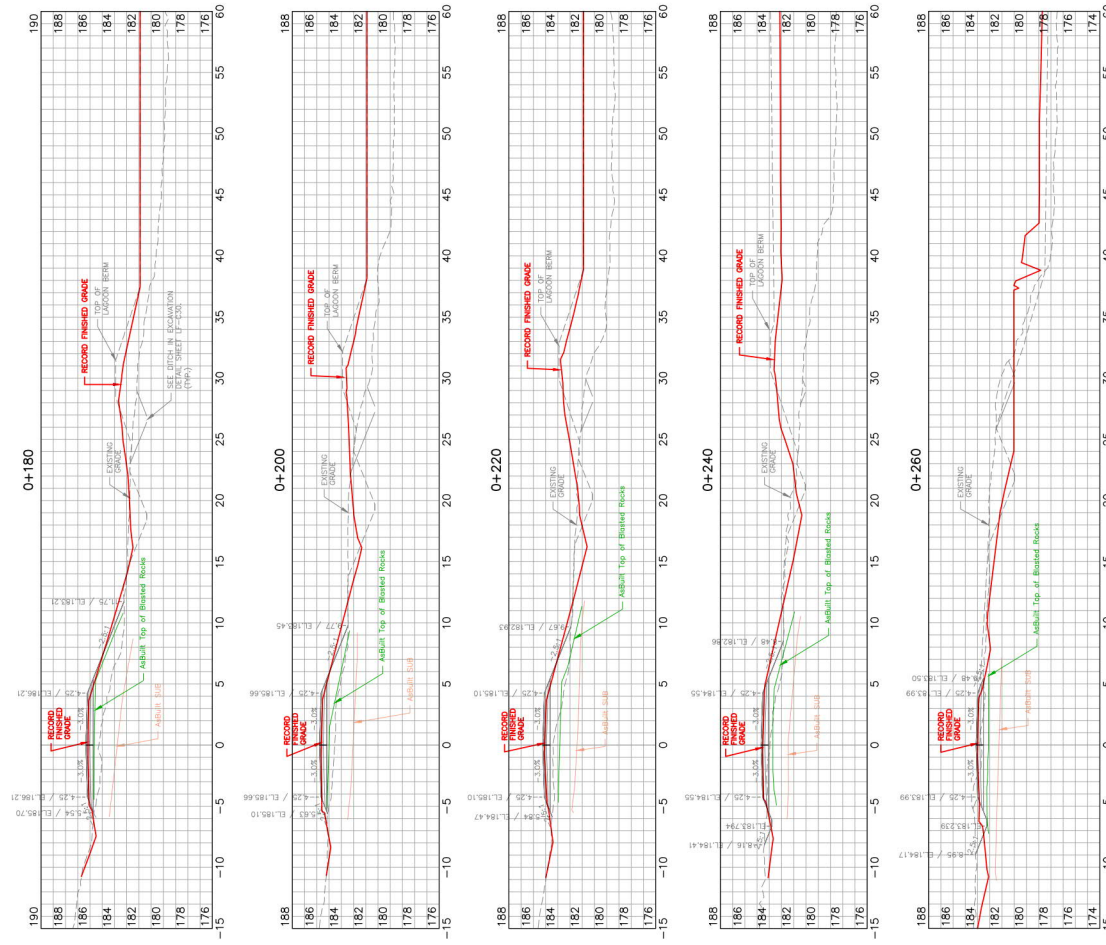
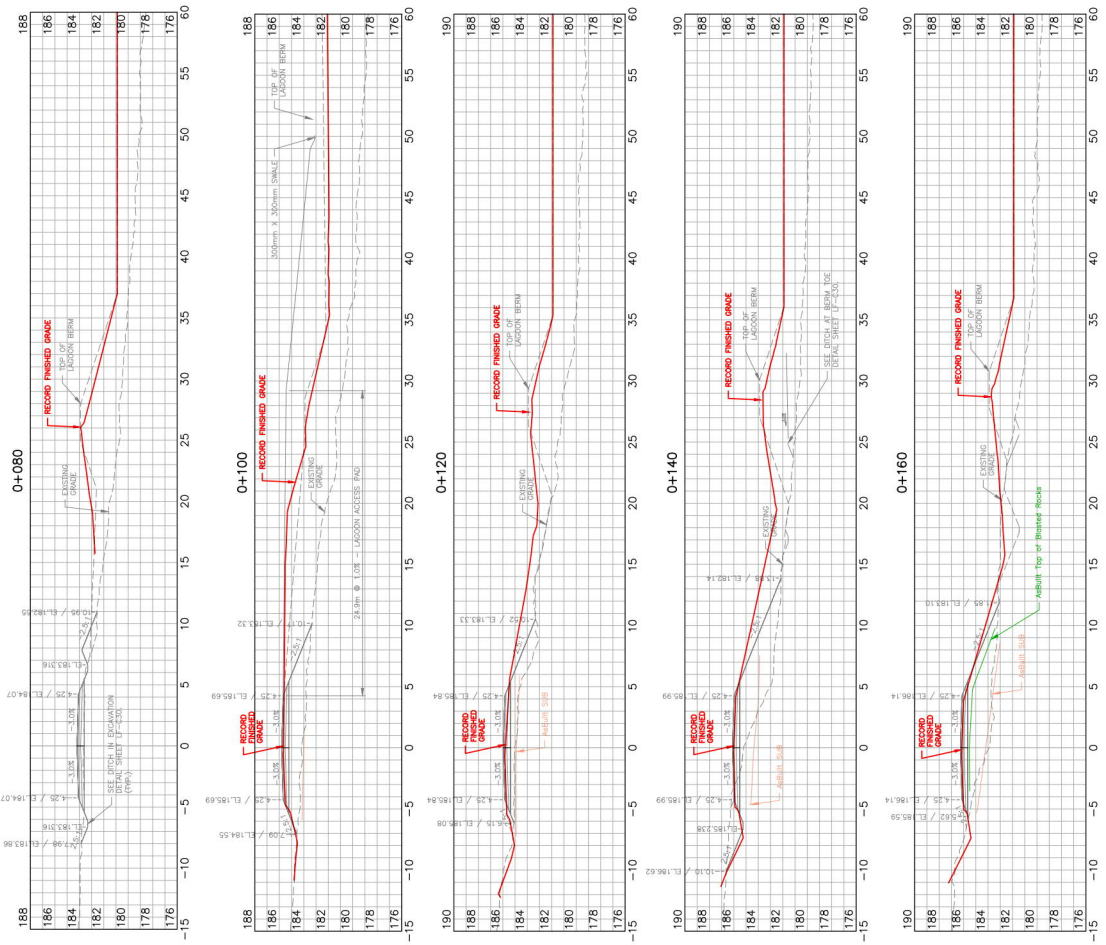








U+0+00	U+0+20	U+0+40	U+0+60	U+0+80	U+0+100	U+0+120	U+0+140	U+0+160	U+0+180	U+0+200	U+0+220	U+0+240	U+0+260	U+0+280	U+0+300	U+0+320	U+0+340	U+0+360	U+0+380	U+0+400
<div>Verify conditions and/or dimensions on drawing prior to use. Report any discrepancies to Dillon Consulting Limited. Do not scale dimensions from drawing. Do not modify drawing, re-use it, or use it for purposes other than those intended at the time of preparation without prior written permission from Dillon Consulting Limited.</div>																				
<div>Originally Stamped By C. R. Shortall</div>																				
<div>Originally Stamped By K. G. Barnes</div>																				
<div>RECORD DRAWING</div>																				
<div><div>THE ASSOCIATION OF PROFESSIONAL ENGINEERS OF THE NORTHERN TERRITORIES MEMBER NUMBER P 010 DATE LIMITED 11/11/2018</div><div> DILLON CONSULTING A/E/C</div></div>																				
<div></div>																				
<div><div><div>3</div><div>REVIEW</div><div>2022-09-01</div><div>REVIEWER</div><div>DATE</div><div>2022-09-01</div><div>U.S.</div></div><div><div>4</div><div>REVIEW</div><div>2022-09-01</div><div>REVIEWER</div><div>DATE</div><div>2022-09-01</div><div>U.S.</div></div><div><div>5</div><div>REVIEW</div><div>2022-09-01</div><div>REVIEWER</div><div>DATE</div><div>2022-09-01</div><div>U.S.</div></div><div><div>6</div><div>REVIEW</div><div>2022-09-01</div><div>REVIEWER</div><div>DATE</div><div>2022-09-01</div><div>U.S.</div></div><div><div>7</div><div>REVIEW</div><div>2022-09-01</div><div>REVIEWER</div><div>DATE</div><div>2022-09-01</div><div>U.S.</div></div><div><div>8</div><div>REVIEW</div><div>2022-09-01</div><div>REVIEWER</div><div>DATE</div><div>2022-09-01</div><div>U.S.</div></div><div><div>9</div><div>REVIEW</div><div>2022-09-01</div><div>REVIEWER</div><div>DATE</div><div>2022-09-01</div><div>U.S.</div></div><div><div>10</div><div>REVIEW</div><div>2022-09-01</div><div>REVIEWER</div><div>DATE</div><div>2022-09-01</div><div>U.S.</div></div><div><div>11</div><div>REVIEW</div><div>2022-09-01</div><div>REVIEWER</div><div>DATE</div><div>2022-09-01</div><div>U.S.</div></div><div><div>12</div><div>REVIEW</div><div>2022-09-01</div><div>REVIEWER</div><div>DATE</div><div>2022-09-01</div><div>U.S.</div></div><div><div>13</div><div>REVIEW</div><div>2022-09-01</div><div>REVIEWER</div><div>DATE</div><div>2022-09-01</div><div>U.S.</div></div><div><div>14</div><div>REVIEW</div><div>2022-09-01</div><div>REVIEWER</div><div>DATE</div><div>2022-09-01</div><div>U.S.</div></div><div><div>15</div><div>REVIEW</div><div>2022-09-01</div><div>REVIEWER</div><div>DATE</div><div>2022-09-01</div><div>U.S.</div></div><div><div>16</div><div>REVIEW</div><div>2022-09-01</div><div>REVIEWER</div><div>DATE</div><div>2022-09-01</div><div>U.S.</div></div><div><div>17</div><div>REVIEW</div><div>2022-09-01</div><div>REVIEWER</div><div>DATE</div><div>2022-09-01</div><div>U.S.</div></div><div><div>18</div><div>REVIEW</div><div>2022-09-01</div><div>REVIEWER</div><div>DATE</div><div>2022-09-01</div><div>U.S.</div></div><div><div>19</div><div>REVIEW</div><div>2022-09-01</div><div>REVIEWER</div><div>DATE</div><div>2022-09-01</div><div>U.S.</div></div><div><div>20</div><div>REVIEW</div><div>2022-09-01</div><div>REVIEWER</div><div>DATE</div><div>2022-09-01</div><div>U.S.</div></div><div><div>21</div><div>REVIEW</div><div>2022-09-01</div><div>REVIEWER</div><div>DATE</div><div>2022-09-01</div><div>U.S.</div></div><div><div>22</div><div>REVIEW</div><div>2022-09-01</div><div>REVIEWER</div><div>DATE</div><div>2022-09-01</div><div>U.S.</div></div><div><div>23</div><div>REVIEW</div><div>2022-09-01</div><div>REVIEWER</div><div>DATE</div><div>2022-09-01</div><div>U.S.</div></div><div><div>24</div><div>REVIEW</div><div>2022-09-01</div><div>REVIEWER</div><div>DATE</div><div>2022-09-01</div><div>U.S.</div></div><div><div>25</div><div>REVIEW</div><div>2022-09-01</div><div>REVIEWER</div><div>DATE</div><div>2022-09-01</div><div>U.S.</div></div><div><div>26</div><div>REVIEW</div><div>2022-09-01</div><div>REVIEWER</div><div>DATE</div><div>2022-09-01</div><div>U.S.</div></div><div><div>27</div><div>REVIEW</div><div>2022-09-01</div><div>REVIEWER</div><div>DATE</div><div>2022-09-01</div><div>U.S.</div></div><div><div>28</div><div>REVIEW</div><div>2022-09-01</div><div>REVIEWER</div><div>DATE</div><div>2022-09-01</div><div>U.S.</div></div><div><div>29</div><div>REVIEW</div><div>2022-09-01</div><div>REVIEWER</div><div>DATE</div><div>2022-09-01</div><div>U.S.</div></div><div><div>30</div><div>REVIEW</div><div>2022-09-01</div><div>REVIEWER</div><div>DATE</div><div>2022-09-01</div><div>U.S.</div></div><div><div>31</div><div>REVIEW</div><div>2022-09-01</div><div>REVIEWER</div><div>DATE</div><div>2022-09-01</div><div>U.S.</div></div><div><div>32</div><div>REVIEW</div><div>2022-09-01</div><div>REVIEWER</div><div>DATE</div><div>2022-09-01</div><div>U.S.</div></div><div><div>33</div><div>REVIEW</div><div>2022-09-01</div><div>REVIEWER</div><div>DATE</div><div>2022-09-01</div><div>U.S.</div></div><div><div>34</div><div>REVIEW</div><div>2022-09-01</div><div>REVIEWER</div><div>DATE</div><div>2022-09-01</div><div>U.S.</div></div><div><div>35</div><div>REVIEW</div><div>2022-09-01</div><div>REVIEWER</div><div>DATE</div><div>2022-09-01</div><div>U.S.</div></div><div><div>36</div><div>REVIEW</div><div>2022-09-01</div><div>REVIEWER</div><div>DATE</div><div>2022-09-01</div><div>U.S.</div></div><div><div>37</div><div>REVIEW</div><div>2022-09-01</div><div>REVIEWER</div><div>DATE</div><div>2022-09-01</div><div>U.S.</div></div><div><div>38</div><div>REVIEW</div><div>2022-09-01</div><div>REVIEWER</div><div>DATE</div><div>2022-09-01</div><div>U.S.</div></div><div><div>39</div><div>REVIEW</div><div>2022-09-01</div><div>REVIEWER</div><div>DATE</div><div>2022-09-01</div><div>U.S.</div></div><div><div>40</div><div>REVIEW</div><div>2022-09-01</div><div>REVIEWER</div><div>DATE</div><div>2022-09-01</div><div>U.S.</div></div><div><div>41</div><div>REVIEW</div><div>2022-09-01</div><div>REVIEWER</div><div>DATE</div><div>2022-09-01</div><div>U.S.</div></div><div><div>42</div><div>REVIEW</div><div>2022-09-01</div><div>REVIEWER</div><div>DATE</div><div>2022-09-01</div><div>U.S.</div></div><div><div>43</div><div>REVIEW</div><div>2022-09-01</div><div>REVIEWER</div><div>DATE</div><div>2022-09-01</div><div>U.S.</div></div><div><div>44</div><div>REVIEW</div><div>2022-09-01</div><div>REVIEWER</div><div>DATE</div><div>2022-09-01</div><div>U.S.</div></div><div><div>45</div><div>REVIEW</div><div>2022-09-01</div><div>REVIEWER</div><div>DATE</div><div>2022-09-01</div><div>U.S.</div></div><div><div>46</div><div>REVIEW</div><div>2022-09-01</div><div>REVIEWER</div><div>DATE</div><div>2022-09-01</div><div>U.S.</div></div><div><div>47</div><div>REVIEW</div><div>2022-09-01</div><div>REVIEWER</div><div>DATE</div><div>2022-09-01</div><div>U.S.</div></div><div><div>48</div><div>REVIEW</div><div>2022-09-01</div><div>REVIEWER</div><div>DATE</div><div>2022-09-01</div><div>U.S.</div></div><div><div>49</div><div>REVIEW</div><div>2022-09-01</div><div>REVIEWER</div><div>DATE</div><div>2022-09-01</div><div>U.S.</div></div><div><div>50</div><div>REVIEW</div><div>2022-09-01</div><div>REVIEWER</div><div>DATE</div><div>2022-09-01</div><div>U.S.</div></div><div><div>51</div><div>REVIEW</div><div>2022-09-01</div><div>REVIEWER</div><div>DATE</div><div>2022-09-01</div><div>U.S.</div></div><div><div>52</div><div>REVIEW</div><div>2022-09-01</div><div>REVIEWER</div><div>DATE</div><div>2022-09-01</div><div>U.S.</div></div><div><div>53</div><div>REVIEW</div><div>2022-09-01</div><div>REVIEWER</div><div>DATE</div><div>2022-09-01</div><div>U.S.</div></div><div><div>54</div><div>REVIEW</div><div>2022-09-01</div><div>REVIEWER</div><div>DATE</div><div>2022-09-01</div><div>U.S.</div></div><div><div>55</div><div>REVIEW</div><div>2022-09-01</div><div>REVIEWER</div><div>DATE</div><div>2022-09-01</div><div>U.S.</div></div><div><div>56</div><div>REVIEW</div><div>2022-09-01</div><div>REVIEWER</div><div>DATE</div><div>2022-09-01</div><div>U.S.</div></div><div><div>57</div><div>REVIEW</div><div>2022-09-01</div><div>REVIEWER</div><div>DATE</div><div>2022-09-01</div><div>U.S.</div></div><div><div>58</div><div>REVIEW</div><div>2022-09-01</div><div>REVIEWER</div><div>DATE</div><div>2022-09-01</div><div>U.S.</div></div><div><div>59</div><div>REVIEW</div><div>2022-09-01</div><div>REVIEWER</div><div>DATE</div><div>2022-09-01</div><div>U.S.</div></div><div><div>60</div><div>REVIEW</div><div>2022-09-01</div><div>REVIEWER</div><div>DATE</div><div>2022-09-01</div><div>U.S.</div></div><div><div>61</div><div>REVIEW</div><div>2022-09-01</div><div>REVIEWER</div><div>DATE</div><div>2022-09-01</div><div>U.S.</div></div><div><div>62</div><div>REVIEW</div><div>2022-09-01</div><div>REVIEWER</div><div>DATE</div><div>2022-09-01</div><div>U.S.</div></div><div><div>63</div><div>REVIEW</div><div>2022-09-01</div><div>REVIEWER</div><div>DATE</div><div>2022-09-01</div><div>U.S.</div></div><div><div>64</div><div>REVIEW</div><div>2022-09-01</div><div>REVIEWER</div><div>DATE</div><div>2022-09-01</div><div>U.S.</div></div><div><div>65</div><div>REVIEW</div><div>2022-09-01</div><div>REVIEWER</div><div>DATE</div><div>2022-09-01</div><div>U.S.</div></div><div><div>66</div><div>REVIEW</div><div>2022-09-01</div><div>REVIEWER</div><div>DATE</div><div>2022-09-01</div><div>U.S.</div></div><div><div>67</div><div>REVIEW</div><div>2022-09-01</div><div>REVIEWER</div><div>DATE</div><div>2022-09-01</div><div>U.S.</div></div><div><div>68</div><div>REVIEW</div><div>2022-09-01</div><div>REVIEWER</div><div>DATE</div><div>2022-09-01</div><div>U.S.</div></div><div><div>69</div><div>REVIEW</div><div>2022-09-01</div><div>REVIEWER</div><div>DATE</div><div>2022-09-01</div><div>U.S.</div></div><div><div>70</div><div>REVIEW</div><div>2022-09-01</div><div>REVIEWER</div><div>DATE</div><div>2022-09-01</div><div>U.S.</div></div><div><div>71</div><div>REVIEW</div><div>2022-09-01</div><div>REVIEWER</div><div>DATE</div><div>2022-09-01</div><div>U.S.</div></div><div><div>72</div><div>REVIEW</div><div>2022-09-01</div><div>REVIEWER</div><div>DATE</div><div>2022-09-01</div><div>U.S.</div></div><div><div>73</div><div>REVIEW</div><div>2022-09-01</div><div>REVIEWER</div><div>DATE</div><div>2022-09-01</div><div>U.S.</div></div><div><div>74</div><div>REVIEW</div><div>2022-09-01</div><div>REVIEWER</div><div>DATE</div><div>2022-09-01</div><div>U.S.</div></div><div><div>75</div><div>REVIEW</div><div>2022-09-01</div><div>REVIEWER</div><div>DATE</div><div>2022-09-01</div><div>U.S.</div></div><div><div>76</div><div>REVIEW</div><div>2022-09-01</div><div>REVIEWER</div><div>DATE</div><div>2022-09-01</div><div>U.S.</div></div><div><div>77</div><div>REVIEW</div><div>2022-09-01</div><div>REVIEWER</div><div>DATE</div><div>2022-09-01</div><div>U.S.</div></div><div><div>78</div><div>REVIEW</div><div>2022-09-01</div><div>REVIEWER</div><div>DATE</div><div>2022-09-01</div><div>U.S.</div></div><div><div>79</div><div>REVIEW</div><div>2022-09-01</div><div>REVIEWER</div><div>DATE</div><div>2022-09-01</div><div>U.S.</div></div><div><div>80</div><div>REVIEW</div><div>2022-09-01</div><div>REVIEWER</div><div>DATE</div><div>2022-09-01</div><div>U.S.</div></div><div><div>81</div><div>REVIEW</div><div>2022-09-01</div><div>REVIEWER</div><div>DATE</div><div>2022-09-01</div><div>U.S.</div></div><div><div>82</div><div>REVIEW</div><div>2022-09-01</div><div>REVIEWER</div><div>DATE</div><div>2022-09-01</div><div>U.S.</div></div><div><div>83</div><div>REVIEW</div><div>2022-09-01</div><div>REVIEWER</div><div>DATE</div><div>2022-09-01</div><div>U.S.</div></div><div><div>84</div><div>REVIEW</div><div>2022-09-01</div><div>REVIEWER</div><div>DATE</div><div>2022-09-01</div><div>U.S.</div></div><div><div>85</div><div>REVIEW</div><div>2022-09-01</div><div>REVIEWER</div><div>DATE</div><div>2022-09-01</div><div>U.S.</div></div><div><div>86</div><div>REVIEW</div><div>2022-09-01</div><div>REVIEWER</div><div>DATE</div><div>2022-09-01</div><div>U.S.</div></div><div><div>87</div><div>REVIEW</div><div>2022-09-01</div><div>REVIEWER</div><div>DATE</div><div>2022-09-01</div><div>U.S.</div></div><div><div>88</div><div>REVIEW</div><div>2022-09-01</div><div>REVIEWER</div><div>DATE</div><div>2022-09-01</div><div>U.S.</div></div><div><div>89</div><div>REVIEW</div><div>2022-09-01</div><div>REVIEWER</div><div>DATE</div><div>2022-09-01</div><div>U.S.</div></div><div><div>90</div><div>REVIEW</div><div>2022-09-01</div><div>REVIEWER</div><div>DATE</div><div>2022-09-01</div><div>U.S.</div></div><div><div>91</div><div>REVIEW</div><div>2022-09-01</div><div>REVIEWER</div><div>DATE</div><div>2022-09-01</div><div>U.S.</div></div><div><div>92</div><div>REVIEW</div><div>2022-09-01</div><div>REVIEWER</div><div>DATE</div><div>2022-09-01</div><div>U.S.</div></div><div><div>93</div><div>REVIEW</div><div>2022-09-01</div><div>REVIEWER</div><div>DATE</div><div>2022-09-01</div><div>U.S.</div></div><div><div>94</div><div>REVIEW</div><div>2022-09-01</div><div>REVIEWER</div><div>DATE</div><div>2022-09-01</div><div>U.S.</div></div><div><div>95</div><div>REVIEW</div><div>2022-09-01</div><div>REVIEWER</div><div>DATE</div><div>2022-09-01</div><div>U.S.</div></div><div><div>96</div><div>REVIEW</div><div>2022-09-01</div><div>REVIEWER</div><div>DATE</div><div>2022-09-01</div><div>U.S.</div></div><div><div>97</div><div>REVIEW</div><div>2022-09-01</div><div>REVIEWER</div><div>DATE</div><div>2022-09-01</div><div>U.S.</div></div><div><div>98</div><div>REVIEW</div><div>2022-09-01</div><div>REVIEWER</div><div>DATE</div><div>2022-09-01</div><div>U.S.</div></div><div><div>99</div><div>REVIEW</div><div>2022-09-01</div><div>REVIEWER</div><div>DATE</div><div>2022-09-01</div><div>U.S.</div></div><div><div>100</div><div>REVIEW</div><div>2022-09-01</div><div>REVIEWER</div><div>DATE</div><div>2022-09-01</div><div>U.S.</div></div><div><div>101</div><div>REVIEW</div><div>2022-09-01</div><div>REVIEWER</div><div>DATE</div><div>2022-09-01</div><div>U.S.</div></div><div><div>102</div><div>REVIEW</div><div>2022-09-01</div><div>REVIEWER</div><div>DATE</div><div>2022-09-01</div><div>U.S.</div></div><div><div>103</div><div>REVIEW</div><div>2022-09-01</div><div>REVIEWER</div><div>DATE</div><div>2022-09-01</div><div>U.S.</div></div><div><div>104</div><div>REVIEW</div><div>2022-09-01</div><div>REVIEWER</div><div>DATE</div><div>2022-09-01</div><div>U.S.</div></div><div><div>105</div><div>REVIEW</div><div>2022-09-01</div><div>REVIEWER</div><div>DATE</div><div>2022-09-01</div><div>U.S.</div></div><div><div>106</div><div>REVIEW</div><div>2022-09-01</div><div>REVIEWER</div><div>DATE</div><div>2022-09-01</div><div>U.S.</div></div><div><div>107</div><div>REVIEW</div><div>2022-09-01</div><div>REVIEWER</div><div>DATE</div><div>2022-09-01</div><div>U.S.</div></div><div><div>108</div><div>REVIEW</div><div>2022-09-01</div><div>REVIEWER</div><div>DATE</div><div>2022-09-01</div><div>U.S.</div></div><div><div>109</div><div>REVIEW</div><div>2022-09-01</div><div>REVIEWER</div><div>DATE</div><div>2022-09-01</div><div>U.S.</div></div><div><div>110</div><div>REVIEW</div><div>2022-09-01</div><div>REVIEWER</div><div>DATE</div><div>2022-09-01</div><div>U.S.</div></div><div><div>111</div><div>REVIEW</div><div>2022-09-01</div><div>REVIEWER</div><div>DATE</div><div>2022-09-01</div><div>U.S.</div></div><div><div>112</div><div>REVIEW</div><div>2022-09-01</div><div>REVIEWER</div><div>DATE</div><div>2022-09-01</div><div>U.S.</div></div><div><div>113</div><div>REVIEW</div><div>2022-09-01</div><div>REVIEWER</div><div>DATE</div><div>2022-09-01</div><div>U.S.</div></div><div><div>114</div><div>REVIEW</div><div>2022-09-01</div><div>REVIEWER</div><div>DATE</div><div>2022-09-01</div><div>U.S.</div></div><div><div>115</div><div>REVIEW</div><div>2022-09-01</div><div>REVIEWER</div><div>DATE</div><div>2022-09-01</div><div>U.S.</div></div><div><div>116</div><div>REVIEW</div><div>2022-09-01</div><div>REVIEWER</div><div>DATE</div><div>2022-09-01</div><div>U.S.</div></div><div><div>117</div><div>REVIEW</div><div>2022-09-01</div><div>REVIEWER</div><div>DATE</div><div>2022-09-01</div><div>U.S.</div></div><div><div>118</div><div>REVIEW</div><div>2022-09-01</div><div>REVIEWER</div><div>DATE</div><div>2022-09-01</div><div>U.S.</div></div><div><div>119</div><div>REVIEW</div><div>2022-09-01</div><div>REVIEWER</div><div>DATE</div><div>2022-09-01</div><div>U.S.</div></div><div><div>120</div><div>REVIEW</div><div>2022-09-01</div><div>REVIEWER</div><div>DATE</div><div>2022-09-01</div><div>U.S.</div></div><div><div>121</div><div>REVIEW</div><div>2022-09-01</div><div>REVIEWER</div><div>DATE</div><div>2022-09-01</div><div>U.S.</div></div><div><div>122</div><div>REVIEW</div><div>2022-09-01</div><div>REVIEWER</div><div>DATE</div><div>2022-09-01</div><div>U.S.</div></div><div><div>123</div><div>REVIEW</div><div>2022-09-01</div><div>REVIEWER</div><div>DATE</div><div>2022-09-01</div><div>U.S.</div></div><div><div>124</div><div>REVIEW</div><div>2022-09-01</div><div>REVIEWER</div><div>DATE</div><div>2022-09-01</div><div>U.S.</div></div><div><div>125</div><div>REVIEW</div><div>2022-09-01</div><div>REVIEWER</div><div>DATE</div><div>2022-09-01</div><div>U.S.</div></div><div><div>126</div><div>REVIEW</div><div>2022-09-01</div><div>REVIEWER</div><div>DATE</div><div>2022-09-01</div><div>U.S.</div></div><div><div>127</div><div>REVIEW</div><div>2022-09-01</div><div>REVIEWER</div><div>DATE</div><div>2022-09-01</div><div>U.S.</div></div><div><div>128</div><div>REVIEW</div><div>2022-09-01</div><div>REVIEWER</div><div>DATE</div><div>2022-09-01</div><div>U.S.</div></div><div><div>129</div><div>REVIEW</div><div>2022-09-01</div><div>REVIEWER</div><div>DATE</div><div>2022-09-01</div><div>U.S.</div></div><div><div>130</div><div>REVIEW</div><div>2022-09-01</div><div>REVIEWER</div><div>DATE</div><div>2022-09-01</div><div>U.S.</div></div><div><div>131</div><div>REVIEW</div><div>2022-09-01</div><div>REVIEWER</div><div>DATE</div><div>2022-09-01</div><div>U.S.</div></div><div><div>132</div><div>REVIEW</div><div>2022-09-01</div><div>REVIEWER</div><div>DATE</div><div>2022-09-01</div><div>U.S.</div></div><div><div>133</div><div>REVIEW</div><div>2022-09-01</div><div>REVIEWER</div><div>DATE</div><div>2022-09-01</div><div>U.S.</div></div><div><div>134</div><div>REVIEW</div><div>2022-09-01</div><div>REVIEWER</div><div>DATE</div><div>2022-09-01</div><div>U.S.</div></div><div><div>135</div><div>REVIEW</div><div>2022-09-01</div><div>REVIEWER</div><div>DATE</div><div>2022-09-01</div><div>U.S.</div></div><div><div>136</div><div>REVIEW</div><div>2022-09-01</div><div>REVIEWER</div><div>DATE</div><div>2022-09-01</div><div>U.S.</div></div><div><div>137</div><div>REVIEW</div><div>2022-09-01</div><div>REVIEWER</div><div>DATE</div><div>2022-09-01</div><div>U.S.</div></div><div><div>138</div><div>REVIEW</div><div>2022-09-01</div><div>REVIEWER</div><div>DATE</div><div>2022-09-01</div><div>U.S.</div></div><div><div>139</div><div>REVIEW</div><div>2022-09-01</div><div>REVIEWER</div><div>DATE</div><div>2022-09-01</div><div>U.S.</div></div><div><div>140</div><div>REVIEW</div><div>2022-09-01</div><div>REVIEWER</div><div>DATE</div><div>2022-09-01</div><div>U.S.</div></div><div><div>141</div><div>REVIEW</div><div>2022-09-01</div><div>REVIEWER</div><div>DATE</div><div>2022-09-01</div><div>U.S.</div></div><div><div>142</div><div>REVIEW</div><div>2022-09-01</div><div>REVIEWER</div><div>DATE</div><div>2022-09-01</div><div>U.S.</div></div><div><div>143</div><div>REVIEW</div><div>2022-09-01</div><div>REVIEWER</div><div>DATE</div><div>2022-09-01</div><div>U.S.</div></div><div><div>144</div><div>REVIEW</div><div>2022-09-01</div><div>REVIEWER</div><div>DATE</div><div>2022-09-01</div><div>U.S.</div></div><div><div>145</div><div>REVIEW</div><div>2022-09-01</div><div>REVIEWER</div><div>DATE</div><div>2022-09-01</div><div>U.S.</div></div><div><div>146</div><div>REVIEW</div><div>2022-09-01</div><div>REVIEWER</div><div>DATE</div><div>2022-09-01</div><div>U.S.</div></div><div><div>147</div><div>REVIEW</div><div>2022-09-01</div><div>REVIEWER</div><div>DATE</div><div>2022-09-01</div><div>U.S.</div></div><div><div>148</div><div>REVIEW</div><div>2022-09-01</div><div>REVIEWER</div><div>DATE</div><div>2022-09-01</div><div>U.S.</div></div><div><div>149</div><div>REVIEW</div><div>2022-09-01</div><div>REVIEWER</div><div>DATE</div><div>2022-09-01</div><div>U.S.</div></div><div><div>150</div><div>REVIEW</div><div>2022-09-01</div><div>REVIEWER</div><div>DATE</div><div>2022-09-01</div><div>U.S.</div></div><div><div>151</div><div>REVIEW</div><div>2022-09-01</div><div>REVIEWER</div><div>DATE</div><div>2022-09-01</div><div>U.S.</div></div><div><div>152</div><div>REVIEW</div><div>2022-09-01</div><div>REVIEWER</div><div>DATE</div><div>2022-09-01</div><div>U.S.</div></div><div><div>153</div><div>REVIEW</div><div>2022-09-01</div><div>REVIEWER</div><div>DATE</div><div>2022-09-01</div><div>U.S.</div></div><div><div>154</div><div>REVIEW</div><div>2022-09-01</div><div>REVIEWER</div><div>DATE</div><div>2022-09-01</div><div>U.S.</div></div><div><div>155</div><div>REVIEW</div><div>2022-09-01</div><div>REVIEWER</div><div>DATE</div><div>2022-09-01</div><div>U.S.</div></div><div><div>156</div><div>REVIEW</div><div>2022-09-01</div><div>REVIEWER</div><div>DATE</div><div>2022-09-01</div><div>U.S.</div></div><div><div>157</div><div>REVIEW</div><div>2022-09-01</div><div>REVIEWER</div><div>DATE</div><div>2022-09-01</div><div>U.S.</div></div><div><div>158</div><div>REVIEW</div><div>2022-09-01</div><div>REVIEWER</div><div>DATE</div><div>2022-09-01</div><div>U.S.</div></div><div><div>159</div><div>REVIEW</div><div>2022-09-01</div><div>REVIEWER</div><div>DATE</div><div>2022-09-01</div><div>U.S.</div></div><div><div>160</div><div>REVIEW</div><div>2022-09-01</div><div>REVIEWER</div><div>DATE</div><div>2022-09-01</div><div>U.S.</div></div><div><div>161</div><div>REVIEW</div><div>2022-09-01</div><div>REVIEWER</div><div>DATE</div><div>2022-09-01</div><div>U.S.</div></div><div><div>162</div><div>REVIEW</div><div>2022-09-01</div><div>REVIEWER</div><div>DATE</div><div>2022-09-01</div><div>U.S.</div></div><div><div>163</div><div>REVIEW</div><div>2022-09-01</div><div>REVIEWER</div><div>DATE</div><div>2022-09-01</div><div>U.S.</div></div><div><div>164</div><div>REVIEW</div><div>2022-09-01</div><div>REVIEWER</div><div>DATE</div><div>2022-09-01</div><div>U.S.</div></div><div><div>165</div><div>REVIEW</div><div>2022-09-01</div><div>REVIEWER</div><div>DATE</div><div>2022-09-01</div><div>U.S.</div></div><div><div>166</div><div>REVIEW</div><div>2022-09-01</div><div>REVIEWER</div><div>DATE</div><div>2022-09-01</div><div>U.S.</div></div><div><div>167</div><div>REVIEW</div><div>2022-09-01</div><div>REVIEWER</div><div>DATE</div><div>2022-09-01</div><div>U.S.</div></div><div><div>168</div><div>REVIEW</div><div>2022-09-01</div><div>REVIEWER</div><div>DATE</div><div>2022-09-01</div><div>U.S.</div></div><div><div>169</div><div>REVIEW</div><div>2022-09-01</div><div>REVIEWER</div><div>DATE</div><div>2022-09-01</div><div>U.S.</div></div><div><div>170</div><div>REVIEW</div><div>2022-09-01</div><div>REVIEWER</div><div>DATE</div><div>2022-09-01</div><div>U.S.</div></div><div><div>171</div><div>REVIEW</div><div>2022-09-01</div><div>REVIEWER</div><div>DATE</div><div>2022-09-01</div><div>U.S.</div></div><div><div>172</div><div>REVIEW</div><div>2022-09-01</div><div>REVIEWER</div><div>DATE</div><div>2022-09-01</div><div>U.S.</div></div><div><div>17</div></div></div>																				



### Conditions of Use

Verify elevations and/or dimensions on drawing prior to use.  
Report any discrepancies to Dillon Consulting Limited.

Do not scale dimensions from drawing.

Do not modify drawing, re-use it, or use it for purposes other than those intended at the time of its preparation without prior written permission from Dillon Consulting Limited.

RECORD DRAWING



THE ASSOCIATION OF  
PROFESSIONAL ENGINEERS,  
GEOLOGISTS AND GEOPHYSICISTS  
OF THE NORTHWEST TERRITORIES  
**PERMIT NUMBER P 010**  
DILLON CONSULTING  
LIMITED  
20022 07 18

[illegible]CITY OF IQALUIT  
SOLID WASTE / ANDELLICITY OF IQALUIT  
SOLID WASTE / ANDELLI

543

LEACHATE LAGOONS ROAD  
SECTIONS STA. 0+080 TO STA. 0+260

LEACHATE LAGOONS ROAD  
SECTIONS STA. 0+080 TO STA. 0+260

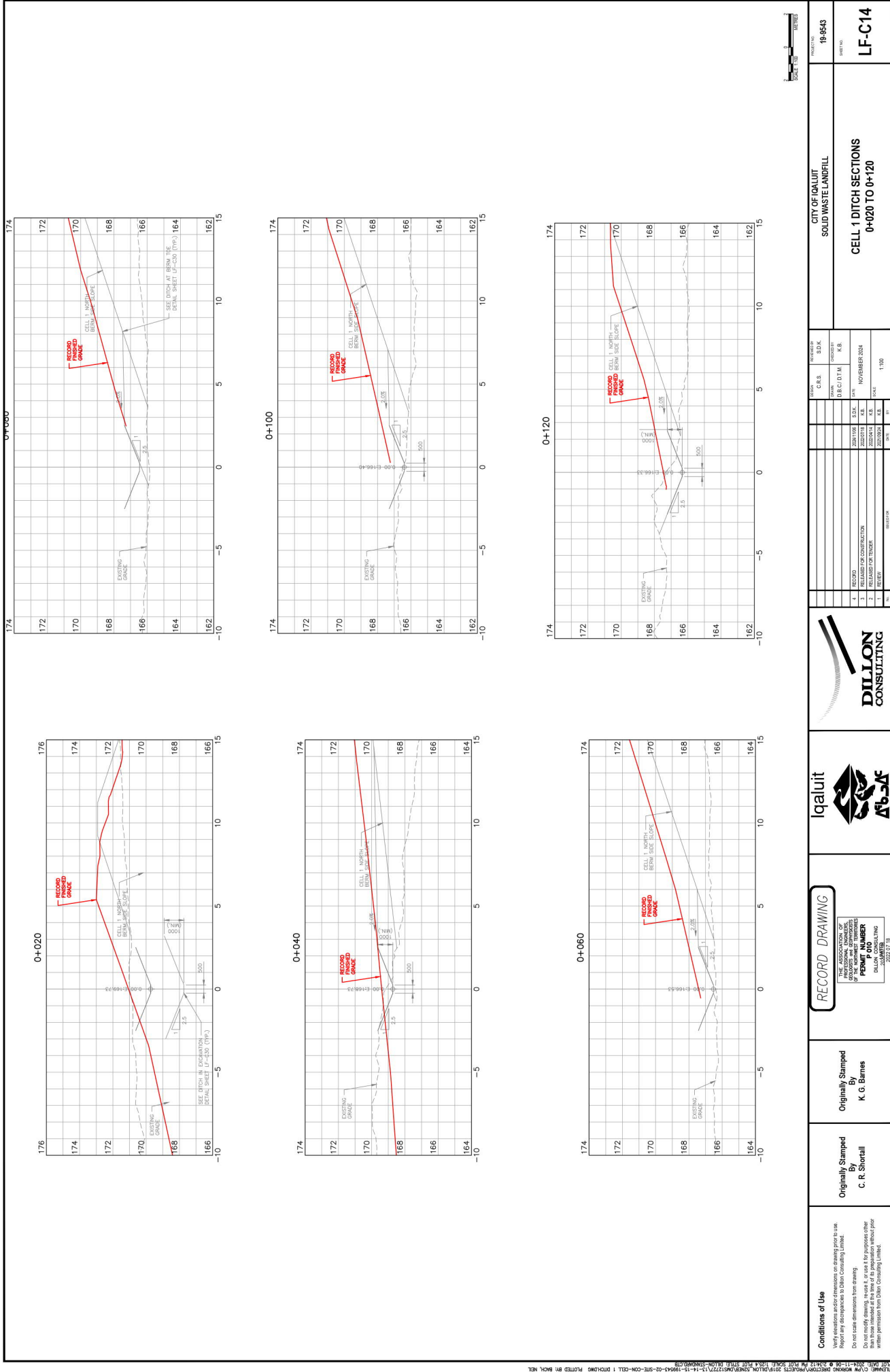
LF-C11











**Conditions of Use**  
Verify elevations and/or dimensions on drawing prior to use.  
Report any discrepancies to Dillon Consulting Limited.  
Do not modify drawing, in whole or in part, for purposes other than those intended.  
Do not use drawing for purposes other than those intended without written permission from Dillon Consulting Limited.

**Originally Stamped**  
C. R. Shortall

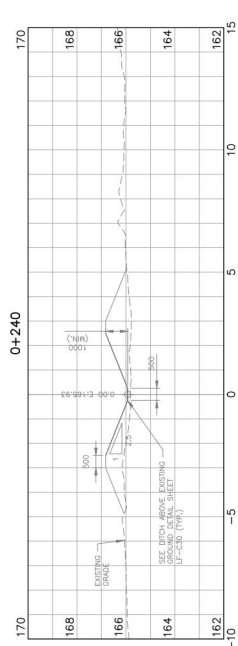
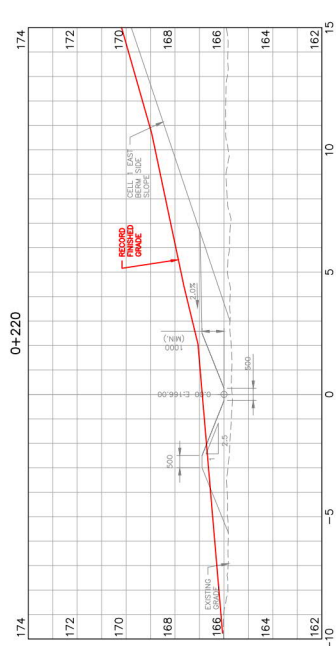
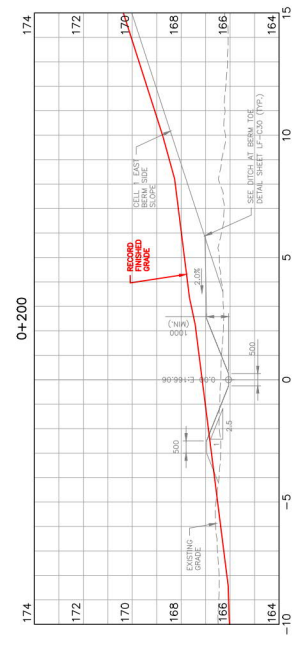
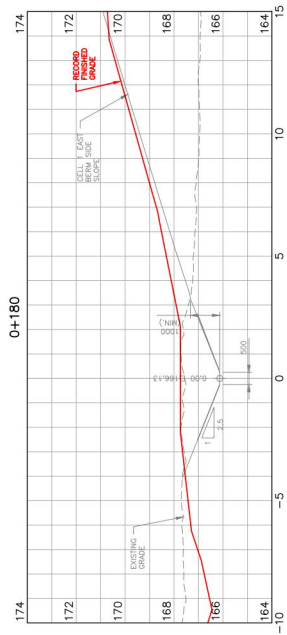
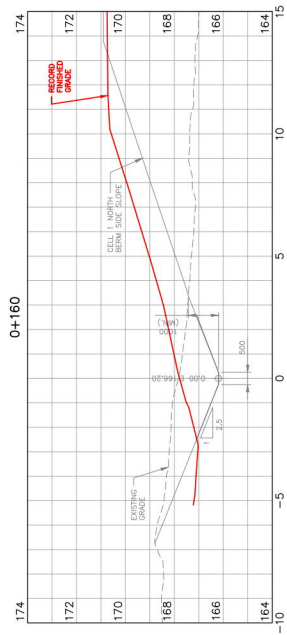
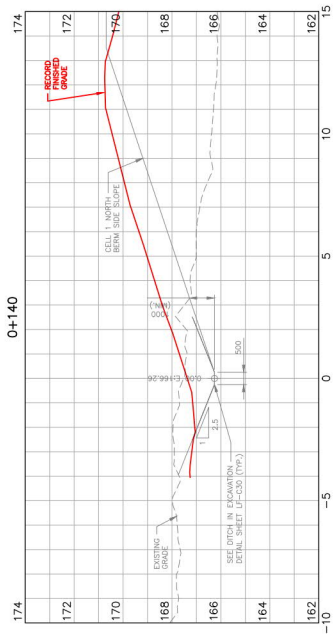
**Originally Stamped**  
K. G. Barnes

**RECORD DRAWING**  
THE ASSOCIATION OF  
PROFESSIONAL ENGINEERS  
OF THE NORTHERN TERRITORIES  
**REGISTERED**  
Dillon Consulting  
2022.11.18



REVISIONS		DATE	BY	APP'D
1	RECORD FOR CONSTRUCTION	2022/10/26	SK	
2	RELEASED FOR TENDER	2022/11/14	SK	
3	REVIEW	2022/11/14	SK	

CITY OF IQALUIT SOLID WASTE LANDFILL		PROJECT NO. 19-9543
CELL 1 DITCH SECTIONS 0+020 TO 0+120		SHEET NO. LF-C14



### Conditions of Use

Verify elevations and/or dimensions on drawing prior to use.  
Report any discrepancies to Dillon Consulting Limited.

Do not scale dimensions from drawing.

Do not modify drawing, re-use it, or use it for purposes other than those intended at the time of its preparation without prior written permission from Dillon Consulting Limited.

Originally Stamped  
By  
C. R. Shortall

Originally Stamped  
By  
K. G. Barnes

RECORD DRAWING

THE ASSOCIATION OF  
PROFESSIONAL ENGINEERS,  
GEOLOGISTS AND GEOPHYSICISTS  
OF THE NORTHWEST TERRITORIES  
**PERMIT NUMBER**  
**P 010**  
DILLON CONSULTING  
202-647-7530  
2022.07.18



REVISION	DATE	BY	DESCRIPTION	DATE	BY	DESCRIPTION
1	2020/04/10	W.B.	REVIEW	2020/04/10	W.B.	REVIEW
2	2020/04/14	W.B.	RELEASD FOR TENDER	2020/04/14	W.B.	RELEASD FOR TENDER
3	2020/04/14	W.B.	RELEASD FOR CONSTRUCTION	2020/04/14	W.B.	RELEASD FOR CONSTRUCTION
4	2024/11/06	S.B.K.	RECORD	2024/11/06	S.B.K.	RECORD

**CELL 1 DITCH SECTIONS**  
**0+140 TO 0+240**

CITY OF IQALUIT  
OLID WASTE LANDFILL

19-9543

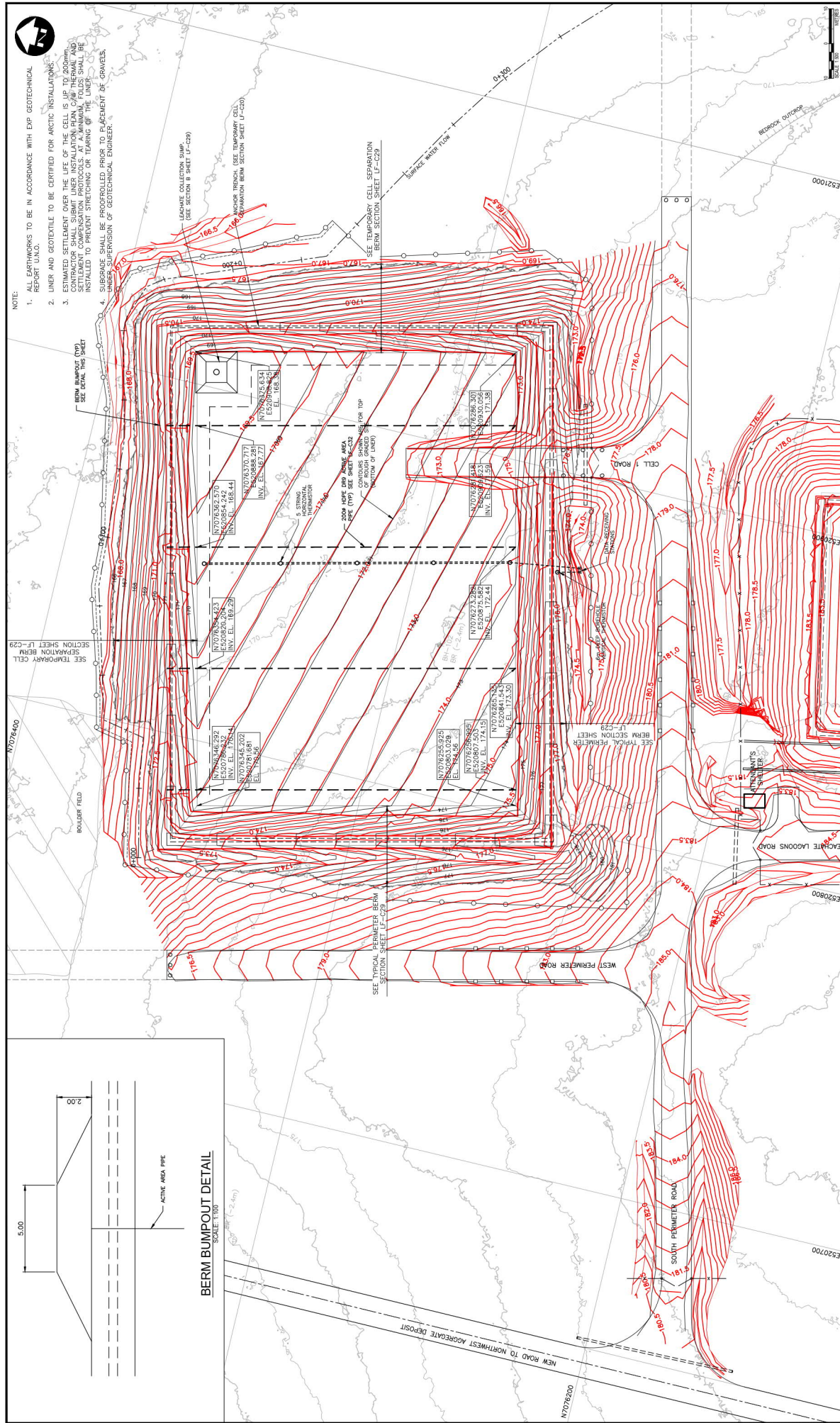
**LF-C15**











### Conditions of Use

Verify elevations and/or dimensions on drawing prior to use.  
Report any discrepancies to Dilon Consulting Limited.  
Do not scale dimensions from drawing.  
Do not modify drawing, re-use it, or use it for purposes other than those intended at the time of its preparation without prior written permission from Dilon Consulting Limited.

Originally Stamped  
By  
K. G. Barnes

Originally Stamped  
By  
C. R. Shortall

RECORD DRAWING

THE ASSOCIATION OF  
PROFESSIONAL ENGINEERS,  
GEOLOGISTS AND GEOPHYSICISTS  
OF THE NORTHWEST TERRITORIES  
**PERMIT NUMBER  
P 010**  
DILLON CONSULTING  
1-867-427-0770

[illegible]

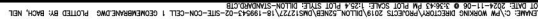
CELL 1 - TOP OF ROUGH GRADED SITE

CITY OF IQALUIT  
SOLID WASTE LANDFILL

19-9543

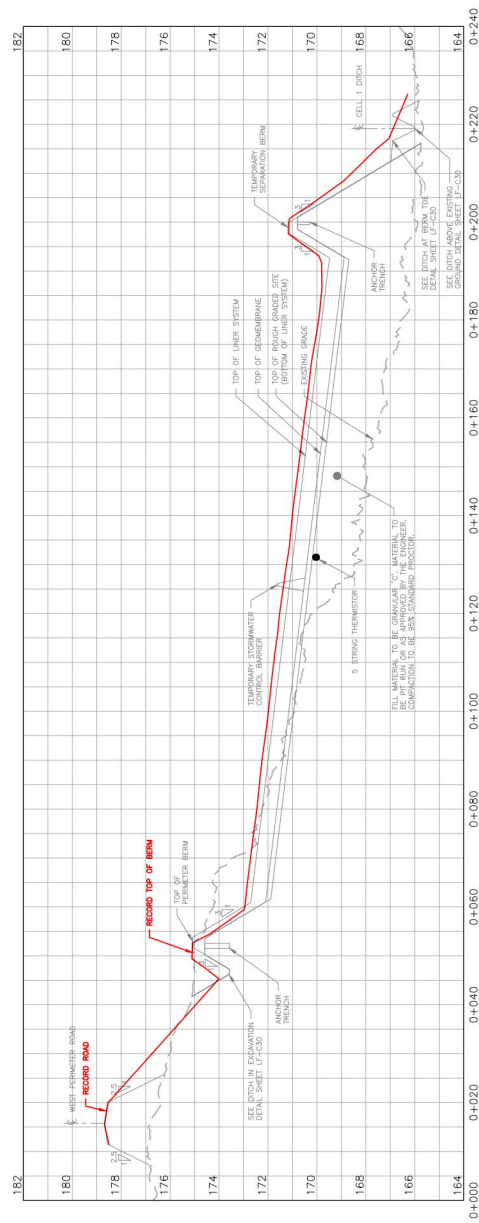
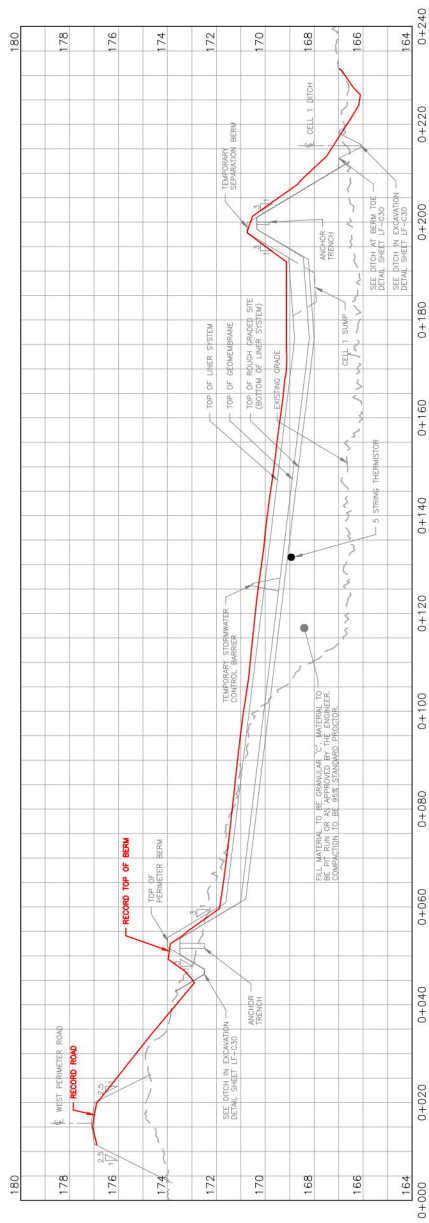
LF-C17

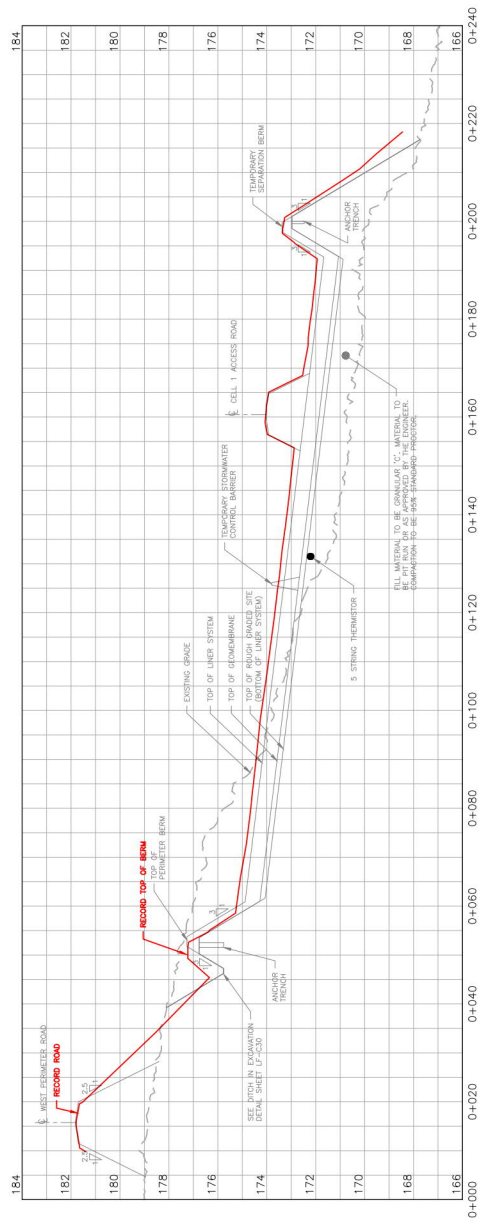
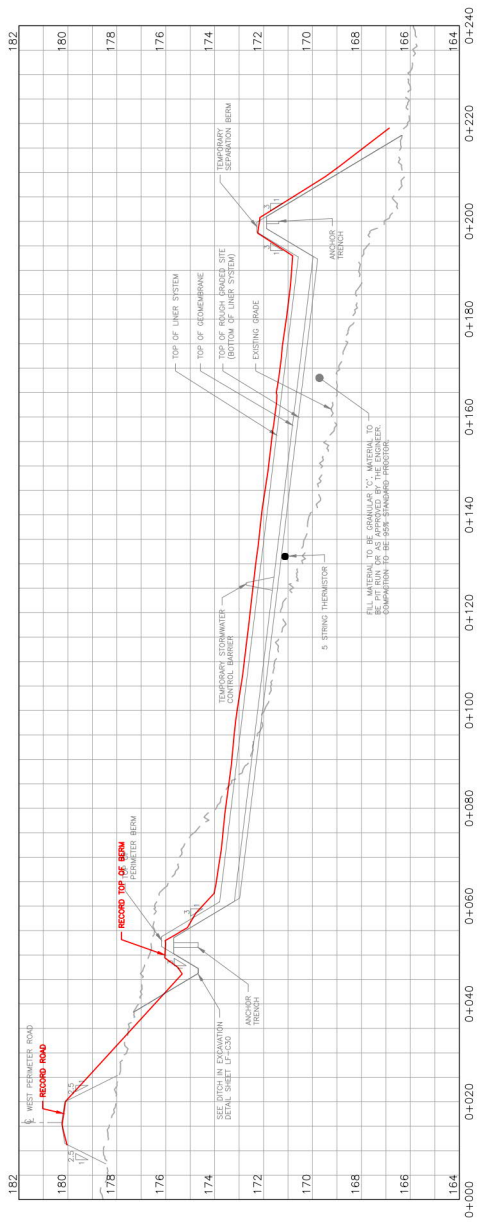






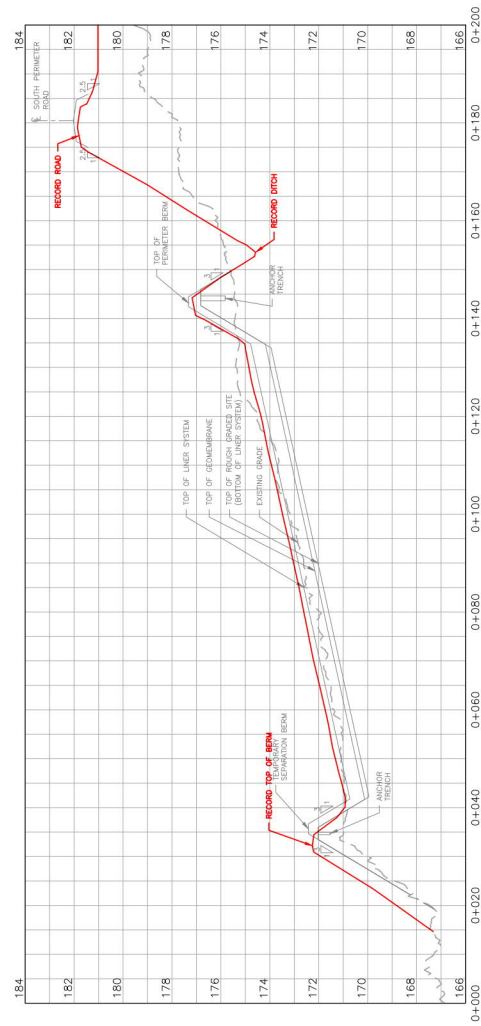
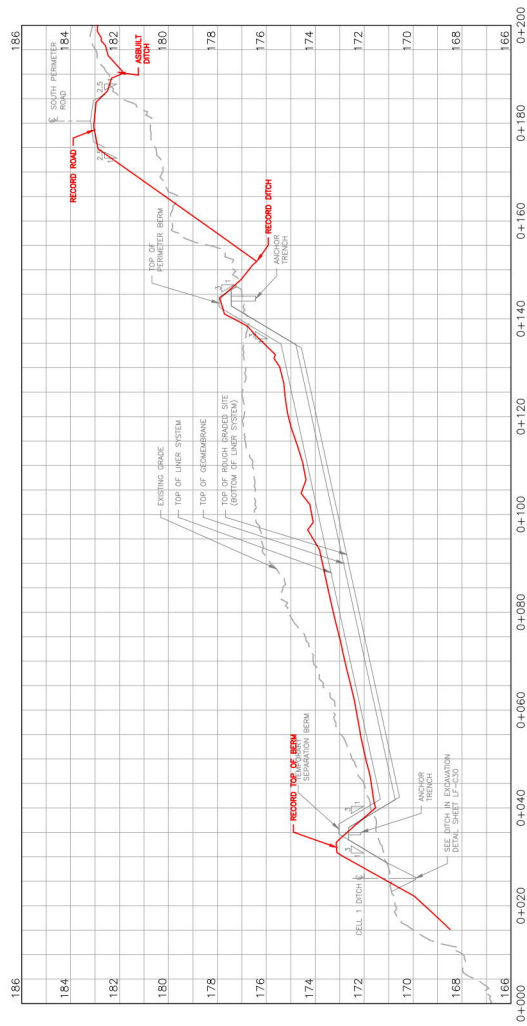


[illegible]



<div>Conditions of Use</div> <div>Verify dimensions and elevations on drawings prior to use.</div> <div>Use drawings for construction only. Do not reproduce or copy without written permission from Dillon Consulting Limited.</div> <div>Do not scale dimensions from drawing.</div> <div>Do not modify drawing, or scale it, or use it for purposes other than those intended at the time of its preparation without prior written permission from Dillon Consulting Limited.</div>	<div>Originally Stamped By</div> <div>C. R. Shortall</div>	<div>Originally Stamped By</div> <div>K. G. Barnes</div>	<div>RECORD DRAWING</div> <div>THE ASSOCIATION OF REGISTERED PROFESSIONAL ENGINEERS AND ARCHITECTS OF NEW ZEALAND PERMIT NUMBER 2004/242</div>	<div></div> <div>DILLON CONSULTING</div>	<div></div> <div>Iqaluit</div>	<div></div> <div>avalon</div>		<table><tr><td>DATE OF ISSUE</td><td>2018-04-20</td><td>C.D.S.</td><td>S.D.K.</td></tr><tr><td>DESIGN</td><td></td><td>DESIGN</td><td></td></tr><tr><td>CHECKED BY</td><td></td><td>DESIGN</td><td></td></tr><tr><td>D.B.C./D.T.M.</td><td></td><td>S.D.K.</td><td></td></tr><tr><td>DATE</td><td>2004-10-15</td><td>DATE</td><td>NOVEMBER 2024</td></tr><tr><td>1</td><td>RECORD</td><td>1</td><td>RELEASED FOR CONSTRUCTION</td></tr><tr><td>2</td><td></td><td>2</td><td>RELEASED FOR TENDER</td></tr><tr><td>3</td><td></td><td>3</td><td>REVIEW</td></tr><tr><td>4</td><td></td><td>4</td><td></td></tr><tr><td>5</td><td></td><td>5</td><td></td></tr><tr><td>6</td><td></td><td>6</td><td></td></tr><tr><td>7</td><td></td><td>7</td><td></td></tr><tr><td>8</td><td></td><td>8</td><td></td></tr><tr><td>9</td><td></td><td>9</td><td></td></tr><tr><td>10</td><td></td><td>10</td><td></td></tr><tr><td>11</td><td></td><td>11</td><td></td></tr><tr><td>12</td><td></td><td>12</td><td></td></tr><tr><td>13</td><td></td><td>13</td><td></td></tr><tr><td>14</td><td></td><td>14</td><td></td></tr><tr><td>15</td><td></td><td>15</td><td></td></tr><tr><td>16</td><td></td><td>16</td><td></td></tr><tr><td>17</td><td></td><td>17</td><td></td></tr><tr><td>18</td><td></td><td>18</td><td></td></tr><tr><td>19</td><td></td><td>19</td><td></td></tr><tr><td>20</td><td></td><td>20</td><td></td></tr><tr><td>21</td><td></td><td>21</td><td></td></tr><tr><td>22</td><td></td><td>22</td><td></td></tr><tr><td>23</td><td></td><td>23</td><td></td></tr><tr><td>24</td><td></td><td>24</td><td></td></tr><tr><td>25</td><td></td><td>25</td><td></td></tr><tr><td>26</td><td></td><td>26</td><td></td></tr><tr><td>27</td><td></td><td>27</td><td></td></tr><tr><td>28</td><td></td><td>28</td><td></td></tr><tr><td>29</td><td></td><td>29</td><td></td></tr><tr><td>30</td><td></td><td>30</td><td></td></tr><tr><td>31</td><td></td><td>31</td><td></td></tr><tr><td>32</td><td></td><td>32</td><td></td></tr><tr><td>33</td><td></td><td>33</td><td></td></tr><tr><td>34</td><td></td><td>34</td><td></td></tr><tr><td>35</td><td></td><td>35</td><td></td></tr><tr><td>36</td><td></td><td>36</td><td></td></tr><tr><td>37</td><td></td><td>37</td><td></td></tr><tr><td>38</td><td></td><td>38</td><td></td></tr><tr><td>39</td><td></td><td>39</td><td></td></tr><tr><td>40</td><td></td><td>40</td><td></td></tr><tr><td>41</td><td></td><td>41</td><td></td></tr><tr><td>42</td><td></td><td>42</td><td></td></tr><tr><td>43</td><td></td><td>43</td><td></td></tr><tr><td>44</td><td></td><td>44</td><td></td></tr><tr><td>45</td><td></td><td>45</td><td></td></tr><tr><td>46</td><td></td><td>46</td><td></td></tr><tr><td>47</td><td></td><td>47</td><td></td></tr><tr><td>48</td><td></td><td>48</td><td></td></tr><tr><td>49</td><td></td><td>49</td><td></td></tr><tr><td>50</td><td></td><td>50</td><td></td></tr><tr><td>51</td><td></td><td>51</td><td></td></tr><tr><td>52</td><td></td><td>52</td><td></td></tr><tr><td>53</td><td></td><td>53</td><td></td></tr><tr><td>54</td><td></td><td>54</td><td></td></tr><tr><td>55</td><td></td><td>55</td><td></td></tr><tr><td>56</td><td></td><td>56</td><td></td></tr><tr><td>57</td><td></td><td>57</td><td></td></tr><tr><td>58</td><td></td><td>58</td><td></td></tr><tr><td>59</td><td></td><td>59</td><td></td></tr><tr><td>60</td><td></td><td>60</td><td></td></tr><tr><td>61</td><td></td><td>61</td><td></td></tr><tr><td>62</td><td></td><td>62</td><td></td></tr><tr><td>63</td><td></td><td>63</td><td></td></tr><tr><td>64</td><td></td><td>64</td><td></td></tr><tr><td>65</td><td></td><td>65</td><td></td></tr><tr><td>66</td><td></td><td>66</td><td></td></tr><tr><td>67</td><td></td><td>67</td><td></td></tr><tr><td>68</td><td></td><td>68</td><td></td></tr><tr><td>69</td><td></td><td>69</td><td></td></tr><tr><td>70</td><td></td><td>70</td><td></td></tr><tr><td>71</td><td></td><td>71</td><td></td></tr><tr><td>72</td><td></td><td>72</td><td></td></tr><tr><td>73</td><td></td><td>73</td><td></td></tr><tr><td>74</td><td></td><td>74</td><td></td></tr><tr><td>75</td><td></td><td>75</td><td></td></tr><tr><td>76</td><td></td><td>76</td><td></td></tr><tr><td>77</td><td></td><td>77</td><td></td></tr><tr><td>78</td><td></td><td>78</td><td></td></tr><tr><td>79</td><td></td><td>79</td><td></td></tr><tr><td>80</td><td></td><td>80</td><td></td></tr><tr><td>81</td><td></td><td>81</td><td></td></tr><tr><td>82</td><td></td><td>82</td><td></td></tr><tr><td>83</td><td></td><td>83</td><td></td></tr><tr><td>84</td><td></td><td>84</td><td></td></tr><tr><td>85</td><td></td><td>85</td><td></td></tr><tr><td>86</td><td></td><td>86</td><td></td></tr><tr><td>87</td><td></td><td>87</td><td></td></tr><tr><td>88</td><td></td><td>88</td><td></td></tr><tr><td>89</td><td></td><td>89</td><td></td></tr><tr><td>90</td><td></td><td>90</td><td></td></tr><tr><td>91</td><td></td><td>91</td><td></td></tr><tr><td>92</td><td></td><td>92</td><td></td></tr><tr><td>93</td><td></td><td>93</td><td></td></tr><tr><td>94</td><td></td><td>94</td><td></td></tr><tr><td>95</td><td></td><td>95</td><td></td></tr><tr><td>96</td><td></td><td>96</td><td></td></tr><tr><td>97</td><td></td><td>97</td><td></td></tr><tr><td>98</td><td></td><td>98</td><td></td></tr><tr><td>99</td><td></td><td>99</td><td></td></tr><tr><td>100</td><td></td><td>100</td><td></td></tr></table>										DATE OF ISSUE	2018-04-20	C.D.S.	S.D.K.	DESIGN		DESIGN		CHECKED BY		DESIGN		D.B.C./D.T.M.		S.D.K.		DATE	2004-10-15	DATE	NOVEMBER 2024	1	RECORD	1	RELEASED FOR CONSTRUCTION	2		2	RELEASED FOR TENDER	3		3	REVIEW	4		4		5		5		6		6		7		7		8		8		9		9		10		10		11		11		12		12		13		13		14		14		15		15		16		16		17		17		18		18		19		19		20		20		21		21		22		22		23		23		24		24		25		25		26		26		27		27		28		28		29		29		30		30		31		31		32		32		33		33		34		34		35		35		36		36		37		37		38		38		39		39		40		40		41		41		42		42		43		43		44		44		45		45		46		46		47		47		48		48		49		49		50		50		51		51		52		52		53		53		54		54		55		55		56		56		57		57		58		58		59		59		60		60		61		61		62		62		63		63		64		64		65		65		66		66		67		67		68		68		69		69		70		70		71		71		72		72		73		73		74		74		75		75		76		76		77		77		78		78		79		79		80		80		81		81		82		82		83		83		84		84		85		85		86		86		87		87		88		88		89		89		90		90		91		91		92		92		93		93		94		94		95		95		96		96		97		97		98		98		99		99		100		100		CITY OF IQALUIT SOLID WASTE LANDFILL	PERMIT NO. 19-5543	CELL 1 - SECTIONS 3 AND 4	LF-C21
								DATE OF ISSUE	2018-04-20	C.D.S.	S.D.K.																																																																																																																																																																																																																																																																																																																																																																																																																																														
								DESIGN		DESIGN																																																																																																																																																																																																																																																																																																																																																																																																																																															
								CHECKED BY		DESIGN																																																																																																																																																																																																																																																																																																																																																																																																																																															
								D.B.C./D.T.M.		S.D.K.																																																																																																																																																																																																																																																																																																																																																																																																																																															
								DATE	2004-10-15	DATE	NOVEMBER 2024																																																																																																																																																																																																																																																																																																																																																																																																																																														
								1	RECORD	1	RELEASED FOR CONSTRUCTION																																																																																																																																																																																																																																																																																																																																																																																																																																														
								2		2	RELEASED FOR TENDER																																																																																																																																																																																																																																																																																																																																																																																																																																														
								3		3	REVIEW																																																																																																																																																																																																																																																																																																																																																																																																																																														
								4		4																																																																																																																																																																																																																																																																																																																																																																																																																																															
5		5																																																																																																																																																																																																																																																																																																																																																																																																																																																							
6		6																																																																																																																																																																																																																																																																																																																																																																																																																																																							
7		7																																																																																																																																																																																																																																																																																																																																																																																																																																																							
8		8																																																																																																																																																																																																																																																																																																																																																																																																																																																							
9		9																																																																																																																																																																																																																																																																																																																																																																																																																																																							
10		10																																																																																																																																																																																																																																																																																																																																																																																																																																																							
11		11																																																																																																																																																																																																																																																																																																																																																																																																																																																							
12		12																																																																																																																																																																																																																																																																																																																																																																																																																																																							
13		13																																																																																																																																																																																																																																																																																																																																																																																																																																																							
14		14																																																																																																																																																																																																																																																																																																																																																																																																																																																							
15		15																																																																																																																																																																																																																																																																																																																																																																																																																																																							
16		16																																																																																																																																																																																																																																																																																																																																																																																																																																																							
17		17																																																																																																																																																																																																																																																																																																																																																																																																																																																							
18		18																																																																																																																																																																																																																																																																																																																																																																																																																																																							
19		19																																																																																																																																																																																																																																																																																																																																																																																																																																																							
20		20																																																																																																																																																																																																																																																																																																																																																																																																																																																							
21		21																																																																																																																																																																																																																																																																																																																																																																																																																																																							
22		22																																																																																																																																																																																																																																																																																																																																																																																																																																																							
23		23																																																																																																																																																																																																																																																																																																																																																																																																																																																							
24		24																																																																																																																																																																																																																																																																																																																																																																																																																																																							
25		25																																																																																																																																																																																																																																																																																																																																																																																																																																																							
26		26																																																																																																																																																																																																																																																																																																																																																																																																																																																							
27		27																																																																																																																																																																																																																																																																																																																																																																																																																																																							
28		28																																																																																																																																																																																																																																																																																																																																																																																																																																																							
29		29																																																																																																																																																																																																																																																																																																																																																																																																																																																							
30		30																																																																																																																																																																																																																																																																																																																																																																																																																																																							
31		31																																																																																																																																																																																																																																																																																																																																																																																																																																																							
32		32																																																																																																																																																																																																																																																																																																																																																																																																																																																							
33		33																																																																																																																																																																																																																																																																																																																																																																																																																																																							
34		34																																																																																																																																																																																																																																																																																																																																																																																																																																																							
35		35																																																																																																																																																																																																																																																																																																																																																																																																																																																							
36		36																																																																																																																																																																																																																																																																																																																																																																																																																																																							
37		37																																																																																																																																																																																																																																																																																																																																																																																																																																																							
38		38																																																																																																																																																																																																																																																																																																																																																																																																																																																							
39		39																																																																																																																																																																																																																																																																																																																																																																																																																																																							
40		40																																																																																																																																																																																																																																																																																																																																																																																																																																																							
41		41																																																																																																																																																																																																																																																																																																																																																																																																																																																							
42		42																																																																																																																																																																																																																																																																																																																																																																																																																																																							
43		43																																																																																																																																																																																																																																																																																																																																																																																																																																																							
44		44																																																																																																																																																																																																																																																																																																																																																																																																																																																							
45		45																																																																																																																																																																																																																																																																																																																																																																																																																																																							
46		46																																																																																																																																																																																																																																																																																																																																																																																																																																																							
47		47																																																																																																																																																																																																																																																																																																																																																																																																																																																							
48		48																																																																																																																																																																																																																																																																																																																																																																																																																																																							
49		49																																																																																																																																																																																																																																																																																																																																																																																																																																																							
50		50																																																																																																																																																																																																																																																																																																																																																																																																																																																							
51		51																																																																																																																																																																																																																																																																																																																																																																																																																																																							
52		52																																																																																																																																																																																																																																																																																																																																																																																																																																																							
53		53																																																																																																																																																																																																																																																																																																																																																																																																																																																							
54		54																																																																																																																																																																																																																																																																																																																																																																																																																																																							
55		55																																																																																																																																																																																																																																																																																																																																																																																																																																																							
56		56																																																																																																																																																																																																																																																																																																																																																																																																																																																							
57		57																																																																																																																																																																																																																																																																																																																																																																																																																																																							
58		58																																																																																																																																																																																																																																																																																																																																																																																																																																																							
59		59																																																																																																																																																																																																																																																																																																																																																																																																																																																							
60		60																																																																																																																																																																																																																																																																																																																																																																																																																																																							
61		61																																																																																																																																																																																																																																																																																																																																																																																																																																																							
62		62																																																																																																																																																																																																																																																																																																																																																																																																																																																							
63		63																																																																																																																																																																																																																																																																																																																																																																																																																																																							
64		64																																																																																																																																																																																																																																																																																																																																																																																																																																																							
65		65																																																																																																																																																																																																																																																																																																																																																																																																																																																							
66		66																																																																																																																																																																																																																																																																																																																																																																																																																																																							
67		67																																																																																																																																																																																																																																																																																																																																																																																																																																																							
68		68																																																																																																																																																																																																																																																																																																																																																																																																																																																							
69		69																																																																																																																																																																																																																																																																																																																																																																																																																																																							
70		70																																																																																																																																																																																																																																																																																																																																																																																																																																																							
71		71																																																																																																																																																																																																																																																																																																																																																																																																																																																							
72		72																																																																																																																																																																																																																																																																																																																																																																																																																																																							
73		73																																																																																																																																																																																																																																																																																																																																																																																																																																																							
74		74																																																																																																																																																																																																																																																																																																																																																																																																																																																							
75		75																																																																																																																																																																																																																																																																																																																																																																																																																																																							
76		76																																																																																																																																																																																																																																																																																																																																																																																																																																																							
77		77																																																																																																																																																																																																																																																																																																																																																																																																																																																							
78		78																																																																																																																																																																																																																																																																																																																																																																																																																																																							
79		79																																																																																																																																																																																																																																																																																																																																																																																																																																																							
80		80																																																																																																																																																																																																																																																																																																																																																																																																																																																							
81		81																																																																																																																																																																																																																																																																																																																																																																																																																																																							
82		82																																																																																																																																																																																																																																																																																																																																																																																																																																																							
83		83																																																																																																																																																																																																																																																																																																																																																																																																																																																							
84		84																																																																																																																																																																																																																																																																																																																																																																																																																																																							
85		85																																																																																																																																																																																																																																																																																																																																																																																																																																																							
86		86																																																																																																																																																																																																																																																																																																																																																																																																																																																							
87		87																																																																																																																																																																																																																																																																																																																																																																																																																																																							
88		88																																																																																																																																																																																																																																																																																																																																																																																																																																																							
89		89																																																																																																																																																																																																																																																																																																																																																																																																																																																							
90		90																																																																																																																																																																																																																																																																																																																																																																																																																																																							
91		91																																																																																																																																																																																																																																																																																																																																																																																																																																																							
92		92																																																																																																																																																																																																																																																																																																																																																																																																																																																							
93		93																																																																																																																																																																																																																																																																																																																																																																																																																																																							
94		94																																																																																																																																																																																																																																																																																																																																																																																																																																																							
95		95																																																																																																																																																																																																																																																																																																																																																																																																																																																							
96		96																																																																																																																																																																																																																																																																																																																																																																																																																																																							
97		97																																																																																																																																																																																																																																																																																																																																																																																																																																																							
98		98																																																																																																																																																																																																																																																																																																																																																																																																																																																							
99		99																																																																																																																																																																																																																																																																																																																																																																																																																																																							
100		100																																																																																																																																																																																																																																																																																																																																																																																																																																																							





### Conditions of Use

Verify elevations and/or dimensions on drawing prior to use.  
Report any discrepancies to Dillon Consulting Limited.

Do not scale dimensions from drawing.

Do not modify drawing, re-use it, or use it for purposes other than those intended at the time of its preparation without prior written permission from Dillon Consulting Limited.

Originally Stamped  
By  
K. G. Barnes

Originally Stamped  
By  
C. R. Shortall

RECORD DRAWING

THE ASSOCIATION OF  
PROFESSIONAL ENGINEERS,  
GEOLOGISTS AND GEOPHYSICISTS  
OF THE NORTHWEST TERRITORIES  
**PERMIT NUMBER**  
**P 010**  
DILLON CONSULTING  
202-AMF159  
2022-07-18

[illegible]

CELL 1 - SECTIONS 5 AND 6

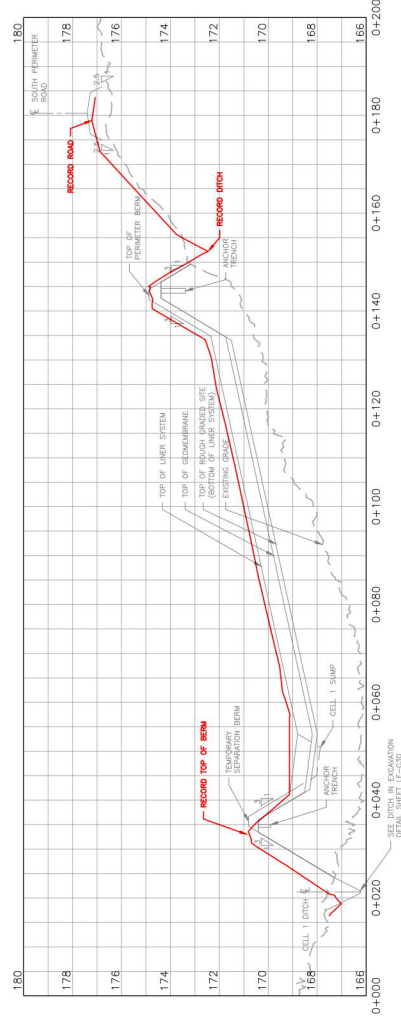
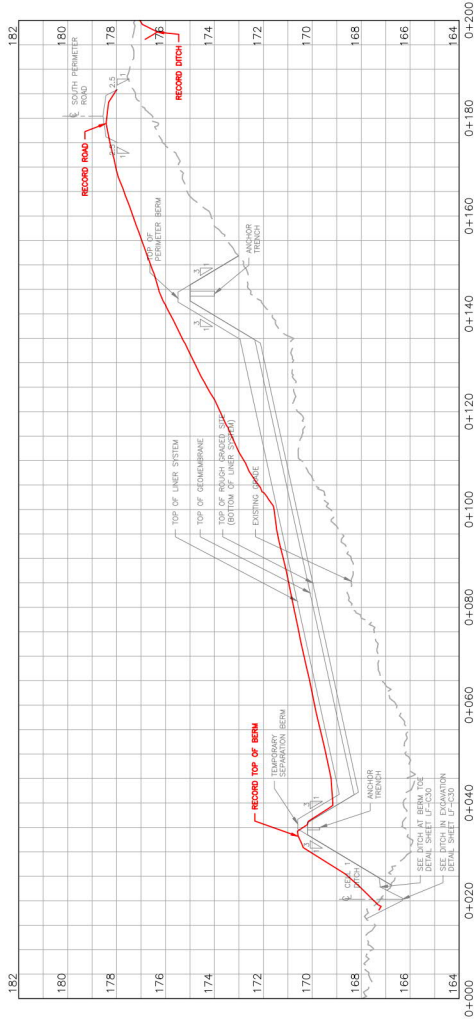
CITY OF IQALUIT  
SOLID WASTE LANDFILL

1543

F-C22







**Conditions of Use**  
Verify elevations and/or dimensions on drawing prior to use.  
Report any discrepancies to Dillon Consulting Limited.  
Do not modify drawing, in whole or in part, for purposes other than those intended.  
This drawing is the property of Dillon Consulting Limited. No part of this drawing may be reproduced or transmitted in any form or by any means electronic or mechanical, including photocopying, recording, or by any information storage and retrieval system, without permission from Dillon Consulting Limited.

Originally Stamped  
C. R. Shortall

Originally Stamped  
K. G. Barnes

**RECORD DRAWING**

THE ASSOCIATION OF  
PROFESSIONAL ENGINEERS  
OF THE PROVINCE OF  
ONTARIO  
REGISTERED  
DILLON CONSULTING  
2022.11.18



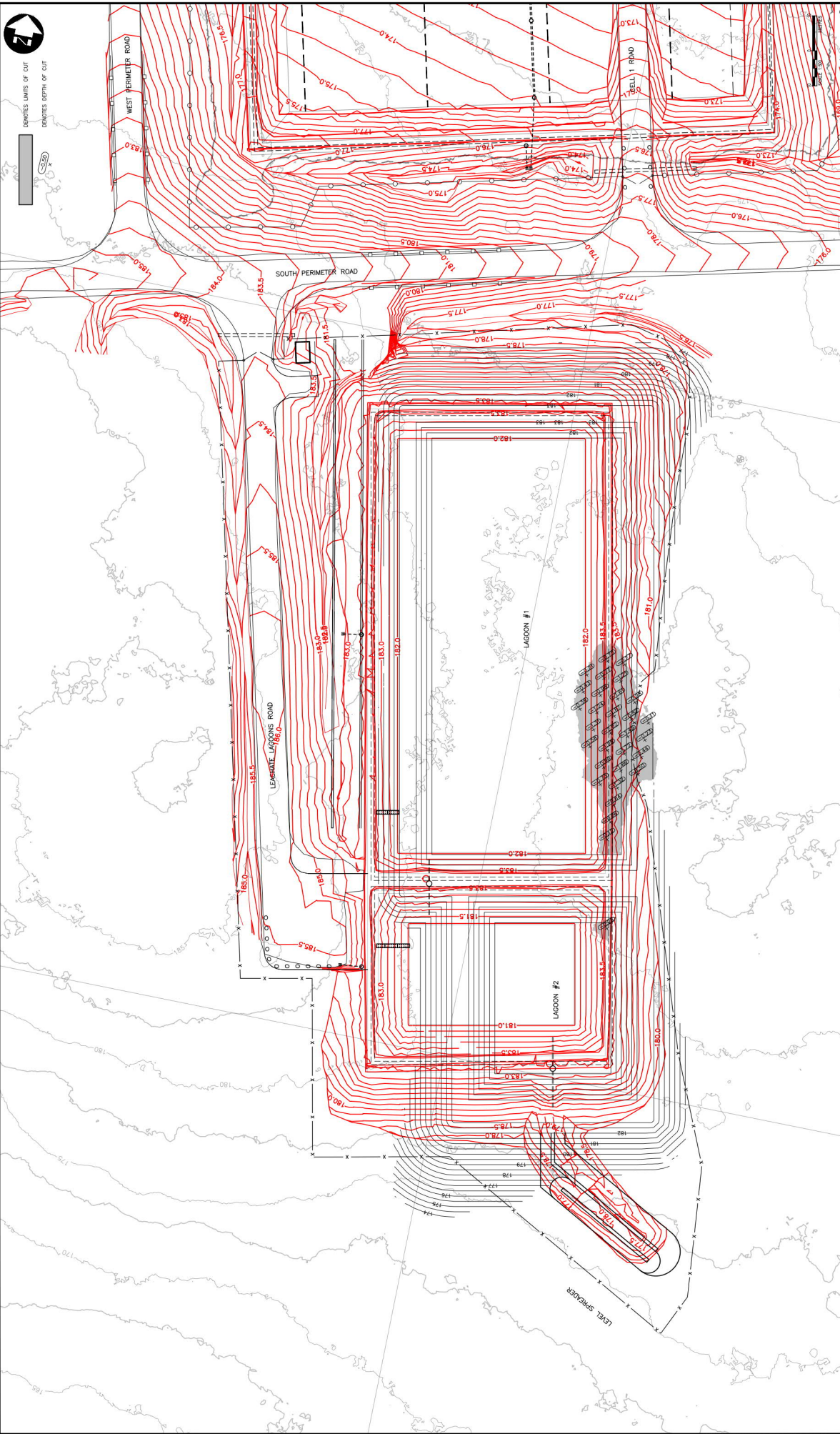
REVISIONS	DATE	BY	DESCRIPTION
1	2024/05/15	SK	RECORD FOR CONSTRUCTION
2	2024/04/15	SK	RELEASED FOR TENDER
3	2024/04/15	SK	REVIEW

CITY OF IQALUIT  
SOLID WASTE LANDFILL  
CELL 1 - SECTIONS 9 AND 10

PROJECT NO.  
19-9543  
SHEET NO.  
LF-C24







DEVOTES LIMITS OF CUT  
DEVOTES DEPTH OF CUT

CONDITIONS OF USE

Verify elevations and/or dimensions on drawing prior to use.  
Report any discrepancies to Dillon Consulting Limited.  
Do not scale dimensions from drawing.  
Do not modify drawing, in whole or in part, or use it for purposes other than those intended without written permission from Dillon Consulting Limited.

RECORD DRAWING

THE ASSOCIATION OF  
PROFESSIONAL ENGINEERS  
OF THE PROVINCE OF  
SASKATCHEWAN  
**REGISTERED**  
DILLON CONSULTING  
2022 ET 18

Originally Stamped  
K. G. Barnes

Originally Stamped  
C. R. Shortall



CITY OF IQALUIT  
SOLID WASTE LANDFILL

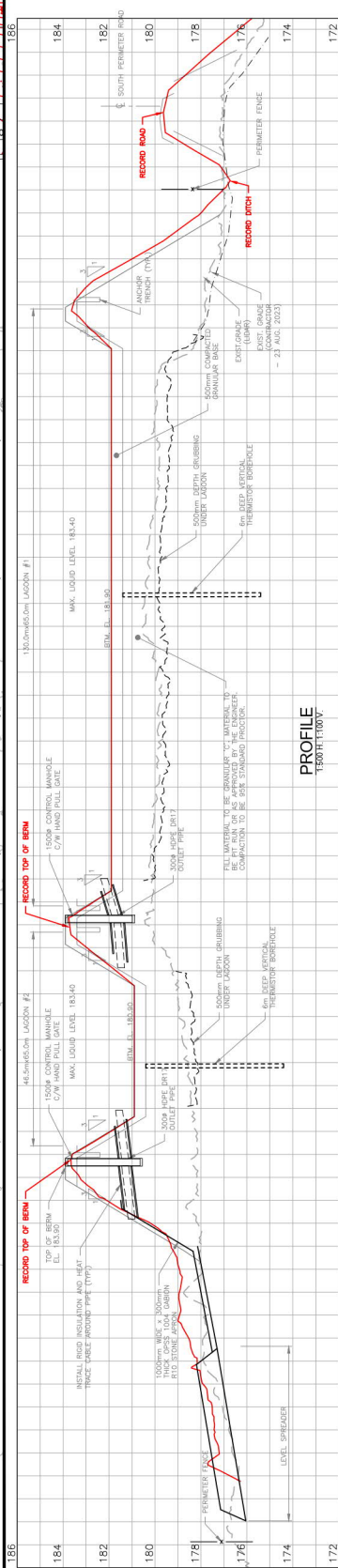
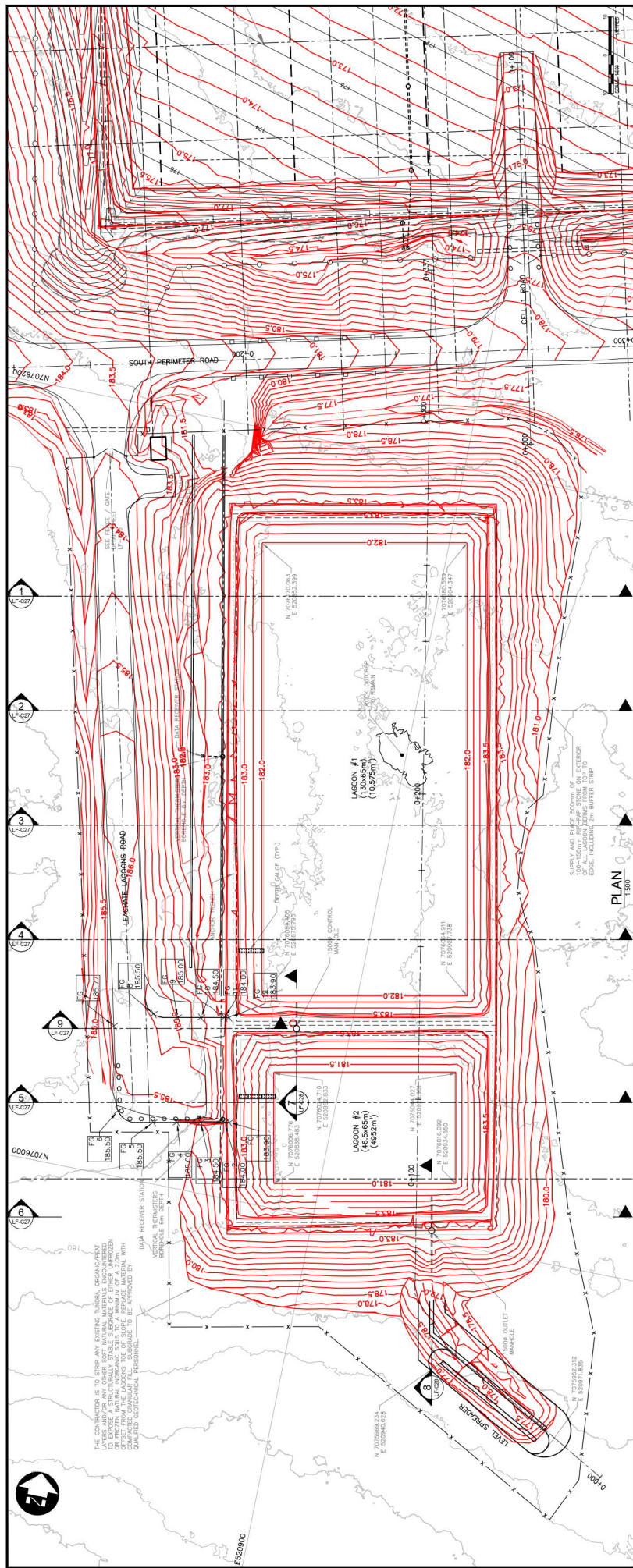
LEACHATE LAGOONS CUT AREA  
(FOR INFORMATION ONLY)

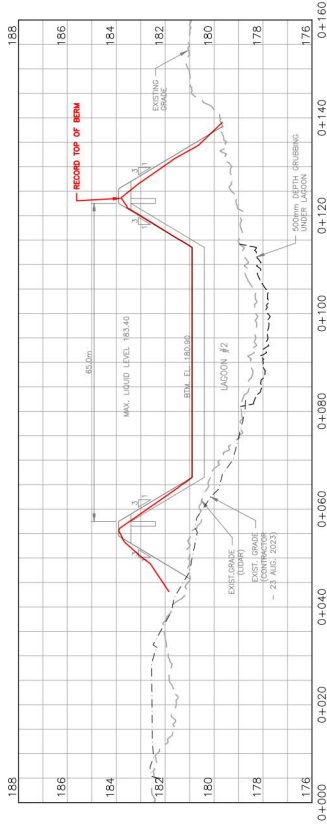
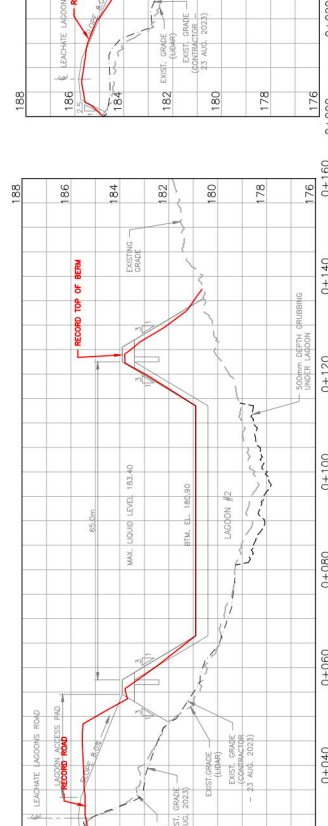
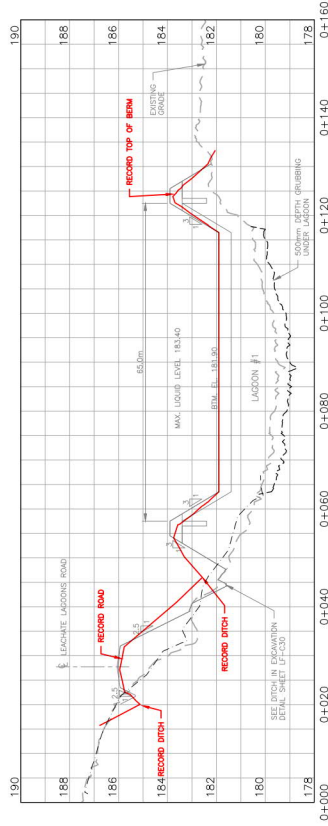
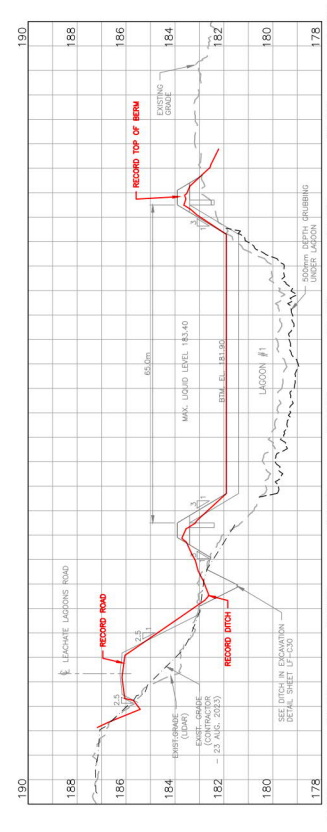
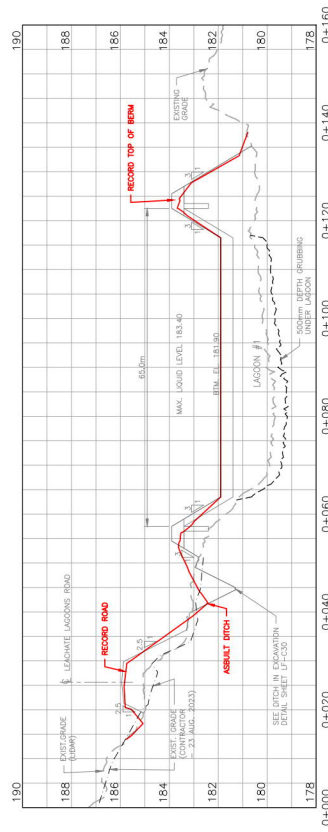
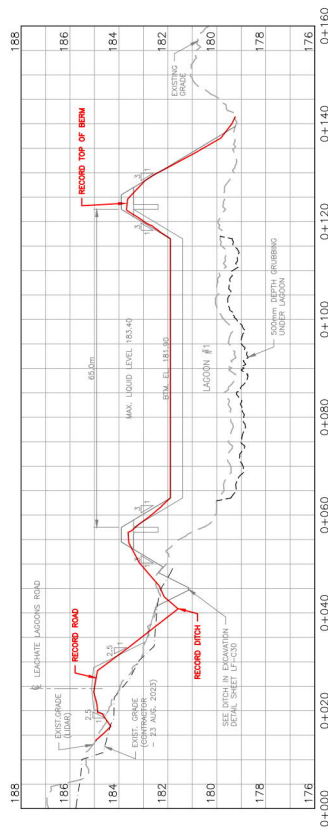
PROJECT NO.  
19-9543

DATE  
NOVEMBER 2024

PROJECT: C:\P\WORKING\DESIGN\PROJECTS\2019\19-9543\19-9543-02-SITE-COM-CUT AREA\RECORD.DWG PLOTTED BY: BUCH, NIEL  
PLOT DATE: 2024-11-22 10:02:36 AM PLOT SCALE: 1:2500 PLOT STYLE: DILLON.ctb PLOTTER: HP DesignJet 5000PS  
19-9543-02-SITE-COM-CUT AREA\RECORD.DWG PLOTTED BY: BUCH, NIEL

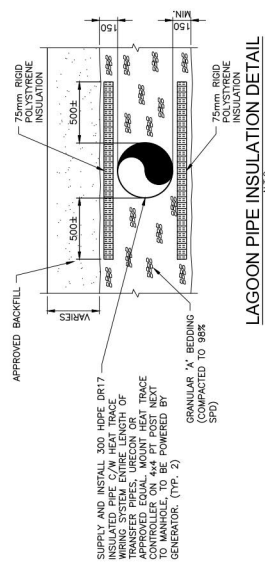


[illegible]

[illegible]

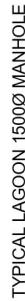


1. ALL WORKMANS TO BE IN ACCORDANCE WITH EXP. GEOTECHNICAL REPORT U-1.
2. LINER AND GEOTEXTILE TO BE CERTIFIED FOR ARCTIC INSTALLATIONS.
3. CONTRACTOR SHALL SUBMIT LINER INSTALLATION PLAN C/W/ THERMAL AND HYDRAULIC PROPERTIES OF LINER TO BE INSTALLED TO PREVENT STRETCHING OR TEARING OF THE LINER.
4. SUBGRADE SHALL BE PROOFROLLED PRIOR TO PLACEMENT OF GRAVELS, UNDER SUPERVISION OF GEOTECHNICAL ENGINEER.
5. ANCHOR TRENCHES TO BE BACKFILLED WITH (1) ARCTIC GROUT OR (2) A MIX OF 60% BENTONITE AND 40% GRUNT.
6. TRENCHES TO BE INSTALLED IN THE ANCHORS TRENCHES TO PREVENT BRIDGING OF THE LINER DUE TO STRETCHING OR TEARING OF THE LINER.



LAGOON PIPE INSULATION DETAIL

SUPPLY AND INSTALL 300 HOPE DR17  
INSULATED PIPE C/W HEAT TRACE  
WIRING SYSTEM ENTIRE LENGTH OF  
TRANSFER PIPES, URECON OR  
APPROVED EQUAL, MOUNT HEAT TRACE  
CONTROLLER ON 4"x4" PT POST NEXT  
TO MANHOLE, TO BE POWERED BY  
GENERATOR. (TYP. 2)



### DETAIL - TYPICAL PIPE BOOT

[illegible]

## Conditions of Use

Verify elevations and/or dimensions on drawing prior to use.  
Report any discrepancies to Dillon Consulting Limited.

Originally Stamped

Originally Stamped

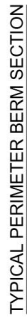
RECORD DRAWING





**DILLON**  
CONSULTING

1. THE CONTRACTOR IS TO STOP ANY EXISTING TUNNEL, GROUNDWATER LATERAL AND/OR ANY OTHER SOFT MATERIAL MATERIALS ENCOUNTERED TO EXPOSE A STRUCTURALLY STABLE SURFACE OF EITHER UNFROZEN OR FROZEN NATURAL BEDROCK SOLES TO A MINIMUM OF A 2.0m OFFSET FROM THE EXISTING SURFACE. THE EXPOSED SURFACE SHALL BE PROTECTED BY GRANULAR FILL SURGRADE TO BE APPROVED BY QUALIFIED GEOTECHNICAL PERSONNEL.
2. ANCHOR TENDONS TO BE BACKFILLED WITH (1) ARCTIC GROUT OR (2) A MIX OF 60% BENTONITE AND 40% CEMENT.
3. SUPPLY AND PLACE 500mm of 100-150mm rip-rap STONE ON EXTERIOR OF ALL CELL 1 BEARS FROM TOP EDGE, INCLUDING 2.0m OF TOP.



## 175



DESIGN	C.R.S.	REVIEWED BY	S.D.K.
DRAWN	D.B.C./D.T.M.	CHECKED BY	K.B.
DATE	NOVEMBER 2024		
SCALE	AS NOTED		

S		PROJECT NO.	19-9543
		SHEET NO.	

Verify elevations and/or dimensions on drawing prior to use.  
Report any discrepancies to Dillon Consulting Limited.

Do not scale dimensions from drawing.

Verify elevations and/or dimensions on drawing prior to use.  
Report any discrepancies to Dillon Consulting Limited.

Do not scale dimensions from drawing.

Do not modify drawing, re-use it, or use it for purposes other than those intended at the time of its preparation without prior written permission from Dillon Consulting Limited.

C. R. Shortall

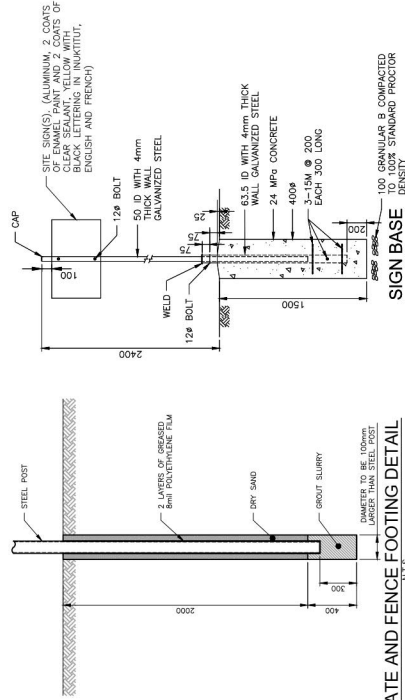
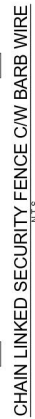
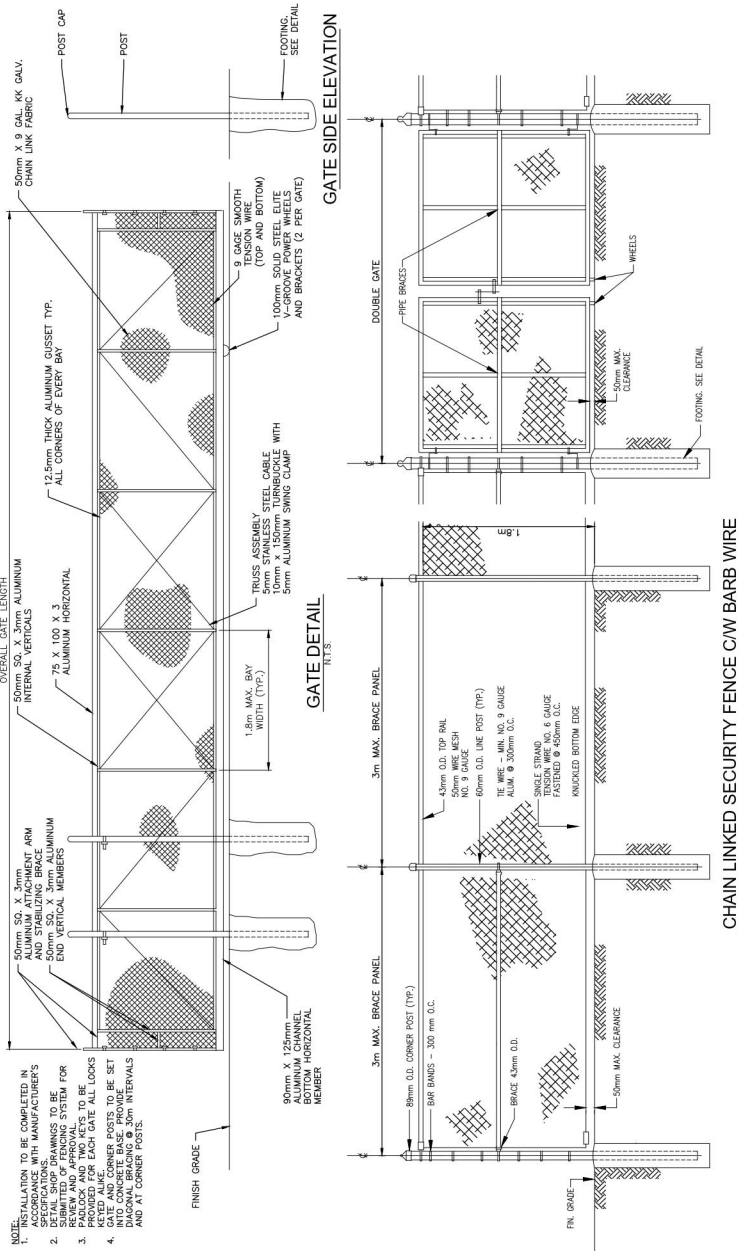
By

THE ASSOCIATION OF  
PROFESSIONAL ENGINEERS,  
GEOLOGISTS AND GEOPHYSICISTS  
OF THE NORTHWEST TERRITORIES  
**PERMIT NUMBER**  
**P 010**  
DILLON CONSULTING  
LIMITED  
20022 07-18









**Conditions of Use**

Verify dimensions and/or dimensions on drawings prior to use.

Report any discrepancies to Dillon Consulting Limited.

Do not scale dimensions from drawings.

Do not modify drawings, re-use it for purposes other than those intended at the time of its preparation without prior written permission from Dillon Consulting Limited.

**RECORD DRAWING**

THE ASSOCIATION OF  
DILLOM CONSULTING  
LIMITED  
PERMIT NUMBER  
DILLOM CONSULTING  
LIMITED

Originally Stamped  
By  
**K. G. Barnes**

Originally Stamped  
By  
**C. R. Shortall**

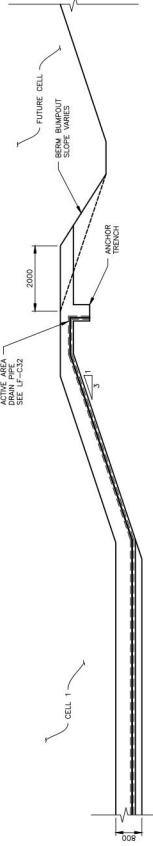
**City of Iqaluit**

**SOLID WASTE LANDFILL**

**LF-C31**

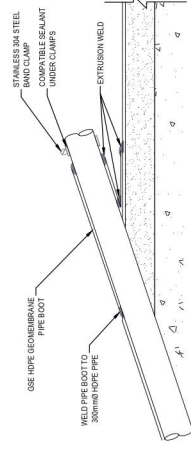
**MISCELLANEOUS DETAILS**

REVISIONS		DATE	BY	DESCRIPTION
1	ISSUED FOR CONSTRUCTION	2020/11/08	S.D.K.	FOR I&E
2	RELEASED FOR CONSTRUCTION	2020/11/14	K.B.	FOR I&E
3	REVISION	2020/09/14	K.B.	FOR I&E
4	REVISION	2020/09/14	K.B.	FOR I&E
5	FOR REVIEW	2020/10/26	K.B.	FOR I&E
6	FOR REVIEW	2020/10/26	K.B.	FOR I&E
7	FOR REVIEW	2020/10/26	K.B.	FOR I&E
8	FOR REVIEW	2020/10/26	K.B.	FOR I&E
9	FOR REVIEW	2020/10/26	K.B.	FOR I&E
10	FOR REVIEW	2020/10/26	K.B.	FOR I&E
11	FOR REVIEW	2020/10/26	K.B.	FOR I&E
12	FOR REVIEW	2020/10/26	K.B.	FOR I&E
13	FOR REVIEW	2020/10/26	K.B.	FOR I&E
14	FOR REVIEW	2020/10/26	K.B.	FOR I&E
15	FOR REVIEW	2020/10/26	K.B.	FOR I&E
16	FOR REVIEW	2020/10/26	K.B.	FOR I&E
17	FOR REVIEW	2020/10/26	K.B.	FOR I&E
18	FOR REVIEW	2020/10/26	K.B.	FOR I&E
19	FOR REVIEW	2020/10/26	K.B.	FOR I&E
20	FOR REVIEW	2020/10/26	K.B.	FOR I&E
21	FOR REVIEW	2020/10/26	K.B.	FOR I&E
22	FOR REVIEW	2020/10/26	K.B.	FOR I&E
23	FOR REVIEW	2020/10/26	K.B.	FOR I&E
24	FOR REVIEW	2020/10/26	K.B.	FOR I&E
25	FOR REVIEW	2020/10/26	K.B.	FOR I&E
26	FOR REVIEW	2020/10/26	K.B.	FOR I&E
27	FOR REVIEW	2020/10/26	K.B.	FOR I&E
28	FOR REVIEW	2020/10/26	K.B.	FOR I&E
29	FOR REVIEW	2020/10/26	K.B.	FOR I&E
30	FOR REVIEW	2020/10/26	K.B.	FOR I&E
31	FOR REVIEW	2020/10/26	K.B.	FOR I&E
32	FOR REVIEW	2020/10/26	K.B.	FOR I&E
33	FOR REVIEW	2020/10/26	K.B.	FOR I&E
34	FOR REVIEW	2020/10/26	K.B.	FOR I&E
35	FOR REVIEW	2020/10/26	K.B.	FOR I&E
36	FOR REVIEW	2020/10/26	K.B.	FOR I&E
37	FOR REVIEW	2020/10/26	K.B.	FOR I&E
38	FOR REVIEW	2020/10/26	K.B.	FOR I&E
39	FOR REVIEW	2020/10/26	K.B.	FOR I&E
40	FOR REVIEW	2020/10/26	K.B.	FOR I&E
41	FOR REVIEW	2020/10/26	K.B.	FOR I&E
42	FOR REVIEW	2020/10/26	K.B.	FOR I&E
43	FOR REVIEW	2020/10/26	K.B.	FOR I&E
44	FOR REVIEW	2020/10/26	K.B.	FOR I&E
45	FOR REVIEW	2020/10/26	K.B.	FOR I&E
46	FOR REVIEW	2020/10/26	K.B.	FOR I&E
47	FOR REVIEW	2020/10/26	K.B.	FOR I&E
48	FOR REVIEW	2020/10/26	K.B.	FOR I&E
49	FOR REVIEW	2020/10/26	K.B.	FOR I&E
50	FOR REVIEW	2020/10/26	K.B.	FOR I&E
51	FOR REVIEW	2020/10/26	K.B.	FOR I&E
52	FOR REVIEW	2020/10/26	K.B.	FOR I&E
53	FOR REVIEW	2020/10/26	K.B.	FOR I&E
54	FOR REVIEW	2020/10/26	K.B.	FOR I&E
55	FOR REVIEW	2020/10/26	K.B.	FOR I&E
56	FOR REVIEW	2020/10/26	K.B.	FOR I&E
57	FOR REVIEW	2020/10/26	K.B.	FOR I&E
58	FOR REVIEW	2020/10/26	K.B.	FOR I&E
59	FOR REVIEW	2020/10/26	K.B.	FOR I&E
60	FOR REVIEW	2020/10/26	K.B.	FOR I&E
61	FOR REVIEW	2020/10/26	K.B.	FOR I&E
62	FOR REVIEW	2020/10/26	K.B.	FOR I&E
63	FOR REVIEW	2020/10/26	K.B.	FOR I&E
64	FOR REVIEW	2020/10/26	K.B.	

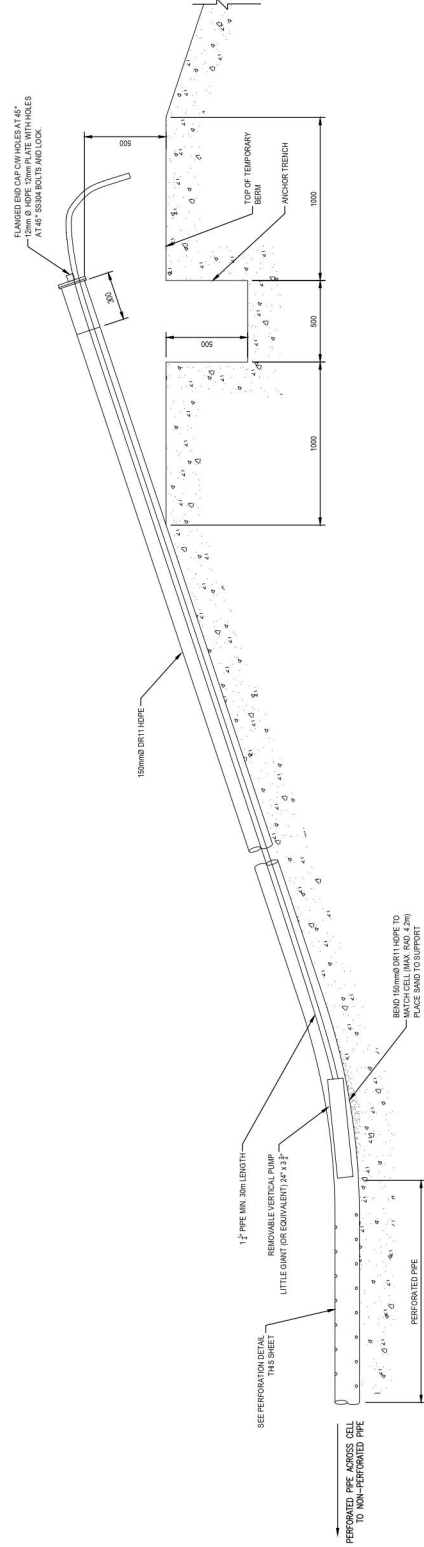


TEMPORARY CELL SEPARATION BERM WITH ACTIVE AREA DRAIN PIPE SECTION

## PIPE PERFORATION DETAIL



## INTAKE PIPE PENETRATION DETAIL



## ACTIVE AREA DRAIN PIPE SECTION

<p><b>Conditions of Use</b></p> <p>Not for circulation or other purposes not relating to use.          Report any discrepancies to Dillon Consulting Limited.</p> <p>Do not scale dimensions from drawing.          Do not modify drawing, reuse it, or use it for purposes other than its use indicated at the time of its preparation without prior written permission from Dillon Consulting Limited.</p>	<p><b>Originally Stamped By</b>  <b>C. R. Shortall</b></p> <p><b>Originally Stamped By</b>  <b>K. G. Barnes</b></p>	<p><b>RECORD DRAWING</b></p> <p>THE ASSOCIATION OF          ARCHITECTS AND ENGINEERS          OF AUSTRALASIA          PERMIT NUMBER          P-010          DILLON CONSULTING</p>	<p><b>Iqaluit</b></p>  <p><b>DILLON CONSULTING</b></p> <p><b>AP-11-16</b></p>	<p><b>1</b> RECORD  <b>2</b> RELEASED FOR CONSTRUCTION  <b>3</b> RELEASED FOR TENDER  <b>4</b> REVIEW  <b>5</b> 10% REVIEW  <b>6</b> 30% REVIEW  <b>7</b> 50% REVIEW  <b>8</b> 70% REVIEW</p> <p><b>9</b> NOVEMBER 2024</p> <p><b>10</b> NOVEMBER 2024</p> <p><b>11</b> NOVEMBER 2024</p> <p><b>12</b> NOVEMBER 2024</p> <p><b>13</b> NOVEMBER 2024</p> <p><b>14</b> NOVEMBER 2024</p> <p><b>15</b> NOVEMBER 2024</p> <p><b>16</b> NOVEMBER 2024</p> <p><b>17</b> NOVEMBER 2024</p> <p><b>18</b> NOVEMBER 2024</p> <p><b>19</b> NOVEMBER 2024</p> <p><b>20</b> NOVEMBER 2024</p> <p><b>21</b> NOVEMBER 2024</p> <p><b>22</b> NOVEMBER 2024</p> <p><b>23</b> NOVEMBER 2024</p> <p><b>24</b> NOVEMBER 2024</p> <p><b>25</b> NOVEMBER 2024</p> <p><b>26</b> NOVEMBER 2024</p> <p><b>27</b> NOVEMBER 2024</p> <p><b>28</b> NOVEMBER 2024</p> <p><b>29</b> NOVEMBER 2024</p> <p><b>30</b> NOVEMBER 2024</p> <p><b>31</b> NOVEMBER 2024</p> <p><b>32</b> NOVEMBER 2024</p> <p><b>33</b> NOVEMBER 2024</p> <p><b>34</b> NOVEMBER 2024</p> <p><b>35</b> NOVEMBER 2024</p> <p><b>36</b> NOVEMBER 2024</p> <p><b>37</b> NOVEMBER 2024</p> <p><b>38</b> NOVEMBER 2024</p> <p><b>39</b> NOVEMBER 2024</p> <p><b>40</b> NOVEMBER 2024</p> <p><b>41</b> NOVEMBER 2024</p> <p><b>42</b> NOVEMBER 2024</p> <p><b>43</b> NOVEMBER 2024</p> <p><b>44</b> NOVEMBER 2024</p> <p><b>45</b> NOVEMBER 2024</p> <p><b>46</b> NOVEMBER 2024</p> <p><b>47</b> NOVEMBER 2024</p> <p><b>48</b> NOVEMBER 2024</p> <p><b>49</b> NOVEMBER 2024</p> <p><b>50</b> NOVEMBER 2024</p> <p><b>51</b> NOVEMBER 2024</p> <p><b>52</b> NOVEMBER 2024</p> <p><b>53</b> NOVEMBER 2024</p> <p><b>54</b> NOVEMBER 2024</p> <p><b>55</b> NOVEMBER 2024</p> <p><b>56</b> NOVEMBER 2024</p> <p><b>57</b> NOVEMBER 2024</p> <p><b>58</b> NOVEMBER 2024</p> <p><b>59</b> NOVEMBER 2024</p> <p><b>60</b> NOVEMBER 2024</p> <p><b>61</b> NOVEMBER 2024</p> <p><b>62</b> NOVEMBER 2024</p> <p><b>63</b> NOVEMBER 2024</p> <p><b>64</b> NOVEMBER 2024</p> <p><b>65</b> NOVEMBER 2024</p> <p><b>66</b> NOVEMBER 2024</p> <p><b>67</b> NOVEMBER 2024</p> <p><b>68</b> NOVEMBER 2024</p> <p><b>69</b> NOVEMBER 2024</p> <p><b>70</b> NOVEMBER 2024</p> <p><b>71</b> NOVEMBER 2024</p> <p><b>72</b> NOVEMBER 2024</p> <p><b>73</b> NOVEMBER 2024</p> <p><b>74</b> NOVEMBER 2024</p> <p><b>75</b> NOVEMBER 2024</p> <p><b>76</b> NOVEMBER 2024</p> <p><b>77</b> NOVEMBER 2024</p> <p><b>78</b> NOVEMBER 2024</p> <p><b>79</b> NOVEMBER 2024</p> <p><b>80</b> NOVEMBER 2024</p> <p><b>81</b> NOVEMBER 2024</p> <p><b>82</b> NOVEMBER 2024</p> <p><b>83</b> NOVEMBER 2024</p> <p><b>84</b> NOVEMBER 2024</p> <p><b>85</b> NOVEMBER 2024</p> <p><b>86</b> NOVEMBER 2024</p> <p><b>87</b> NOVEMBER 2024</p> <p><b>88</b> NOVEMBER 2024</p> <p><b>89</b> NOVEMBER 2024</p> <p><b>90</b> NOVEMBER 2024</p> <p><b>91</b> NOVEMBER 2024</p> <p><b>92</b> NOVEMBER 2024</p> <p><b>93</b> NOVEMBER 2024</p> <p><b>94</b> NOVEMBER 2024</p> <p><b>95</b> NOVEMBER 2024</p> <p><b>96</b> NOVEMBER 2024</p> <p><b>97</b> NOVEMBER 2024</p> <p><b>98</b> NOVEMBER 2024</p> <p><b>99</b> NOVEMBER 2024</p> <p><b>100</b> NOVEMBER 2024</p>	<p><b>CITY OF IQALUIT</b></p> <p><b>SOLID WASTE LANDFILL</b></p> <p><b>ACTIVE AREA DRAIN PIPE DETAILS</b></p> <p><b>LF-C32</b></p> <p><b>19-9543</b></p> <p><b>19-9543</b></p>
--	---	---	---	---	--