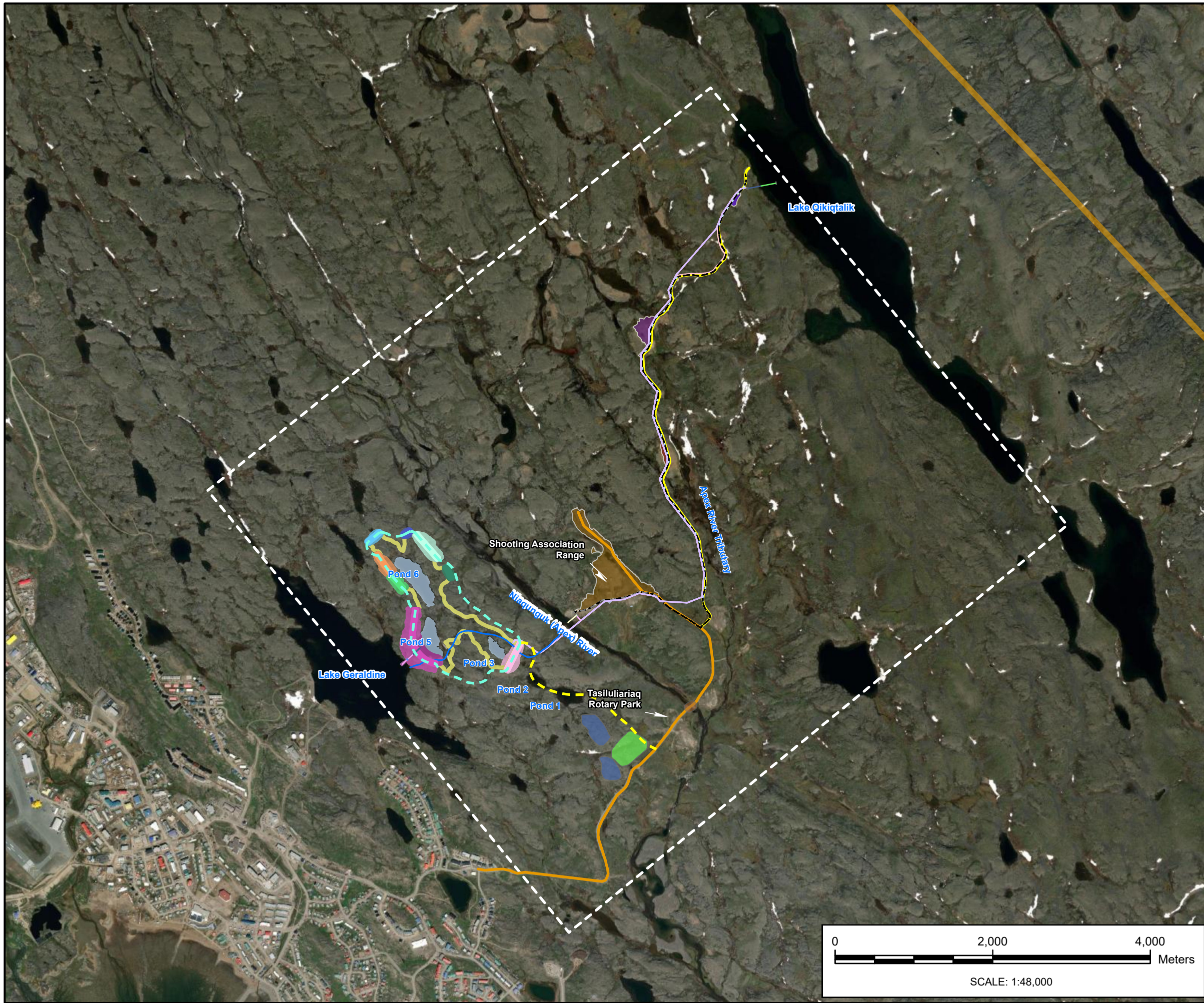




ATTACHMENT 14

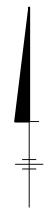
LTWP Site Plans



LEGEND

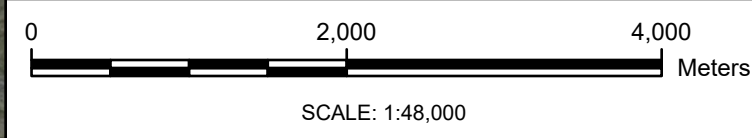
- SITE AREA
- ROAD TO UNNAMED LAKE
- ROAD TO NOWHERE
- PROPOSED ACCESS ROAD
- ALIGNMENTS AND SURFACE BORDER
- PROPOSED 150MMØ AIRBURST LINE
- PROPOSED 2X750Ø HDPE PIPES
- PROPOSED CONNECTION SYSTEM
- PROPOSED INTAKE STATION
- INTAKE (APPROX. 55M)
- PUMPHOUSE/PIPELINE CONDUIT
- PROPOSED BORROW 1: SHOOTING RANGE
- PROPOSED BORROW 2: LOWER SAND DEPOSIT
- PROPOSED BORROW 3: UPPER SAND DEPOSIT
- PROPOSED BORROW 4: QIKIQTALIK ESKER
- PROPOSED PUMPING STATION
- PROPOSED SCREENING
- 50M BUFFER BRIDGE ROAD TO NO WHERE
- RESERVOIR FOOTPRINT
- DAM1
- DYKE2
- DYKE3
- DYKE4
- DYKE5
- DYKE6
- DYKE7 (SPILLWAY)
- DYKE8
- WATER
- BUILDINGS
- PROPOSED LAYDOWN AREA
- PROPOSED QUARRY AREAS
- PUMP STATION
- MUNICIPAL BOUNDARY OF THE CITY OF IQLAUIT

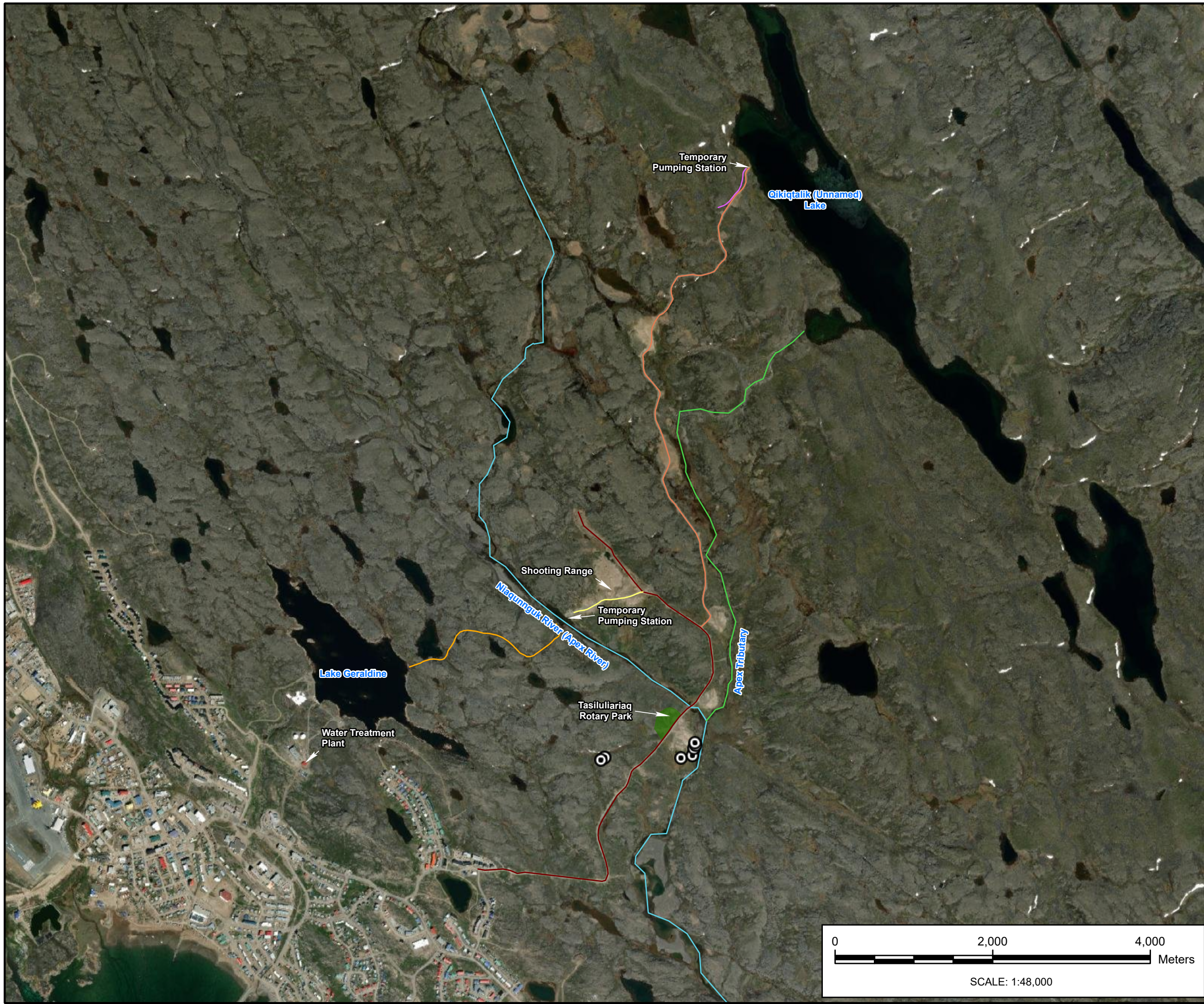
Image source: Esri, Maxar, Earthstar Geographics, and the GIS User Community.
 Date: 2022/07/08



NUNAVUT PLANNING COMMISSION APPLICATION
 CITY OF IQLAUIT

LONG TERM WATER PROJECT COMPONENTS





LEGEND










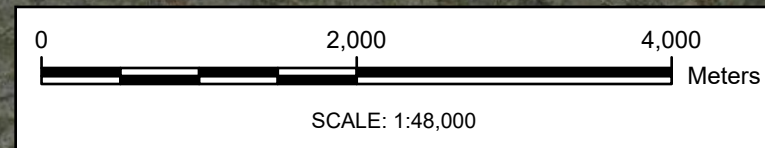
-  STRUCTURES
-  ROAD TO NOWHERE
-  ROTARY PARK
- EXISTING_ENVIRONMENT**
-  APEX RIVER
-  APEX TRIBUTARY
-  ACCES ROAD TO APEX RIVER
- EMERGENCY PIPELINES**
-  IQALUIT 2019 EMERGENCY WATER SUPPLY PROJECT
-  IQALUIT 2019 EMERGENCY WATER SUPPLY PROJECT - NEW ROAD
-  RIVER (EMERGENCY WATER SUPPLY)

Image source: Esri, Maxar, Earthstar Geographics, and the GIS User Community.
Date: 2022/07/08

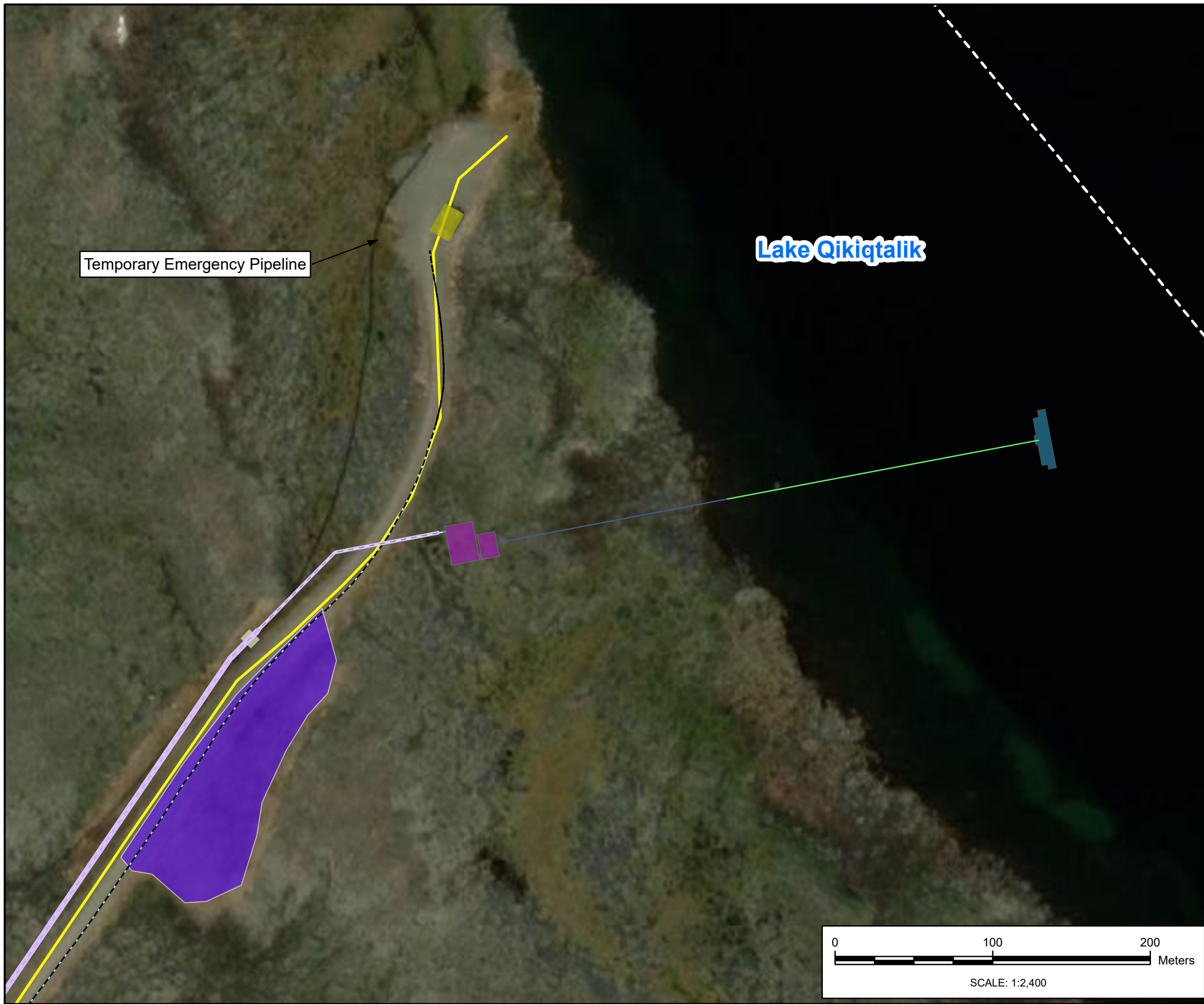


LONG TERM WATER PROJECT IN IQALUIT, NUNAVUT
CITY OF IQALUIT

EXISTING ENVIRONMENT



City: SYR Div/Group: IM/DV Created By: J.RAPP Last Saved By: mayyar7350
T:_ENV\City of Iqaluit\Pro\Terrestrial Wildlife and Habitat.aprx Fig 2 Lake Qikiqtalik Intake and Raw Water Pump Station 12/18/2024 9:08 AM



LEGEND












-  SITE AREA
-  ROAD TO UNNAMED LAKE
-  PROPOSED 150MMØ AIRBURST LINE
-  PROP. 750MMØ INTAKE
-  ROAD
-  WATER CONVEYANCE PIPELINE
-  PROPOSED BORROW 4: QIKIQTALIK ESKER
-  LAKE QIKIQTALIK PUMP STATION
-  PROPOSED SCREENING
-  BUILDINGS
-  DECOMMISSIONED EMERGENCY PUMP STATION

Image source: Esri, Maxar, Earthstar Geographics, and the GIS User Community.
Date: 2022/07/08



NUNAVUT PLANNING COMMISSION APPLICATION
CITY OF IQALUIT

**LAKE QIKIQTALIK INTAKE AND
RAW WATER PUMP STATION**

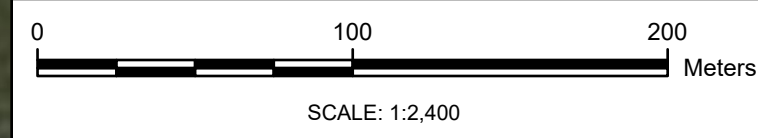
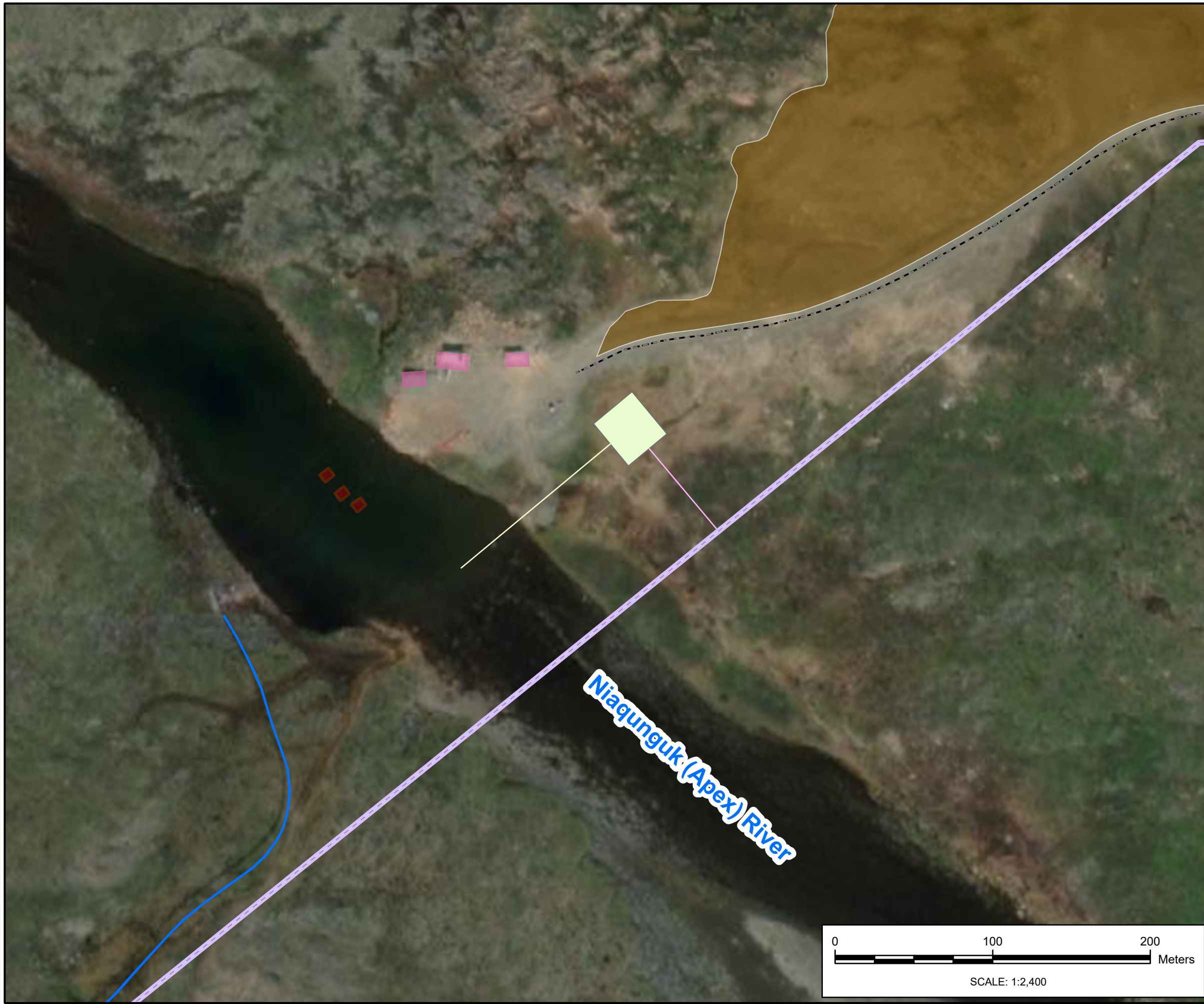


FIGURE
2

City: SYR Div/Group: IM/DV Created By: J.RAPP Last Saved By: mayyar7350
T:_ENV\City of Iqaluit\Pro\Terrestrial Wildlife and Habitat.aprx Fig 3 Apex River Intake and Raw Water Pump Station 12/18/2024 9:17 AM



LEGEND

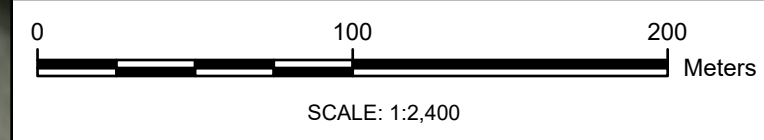
- SITE AREA
- INTAKE (APPROX. 55M)
- PUMPHOUSE/PIPELINE CONDUIT
- ROAD
- WATER CONVEYANCE PIPELINE
- TEMPORARY EMERGENCY PIPELINE
- PROPOSED BORROW 1: SHOOTING RANGE
- APEX RIVER PUMP STATION
- THREE SUBMERSIBLE PUMPS
- APEX RIVER EMERGENCY PUMP STATION

Image source: Esri, Maxar, Earthstar Geographics,
and the GIS User Community.
Date: 2022/07/08



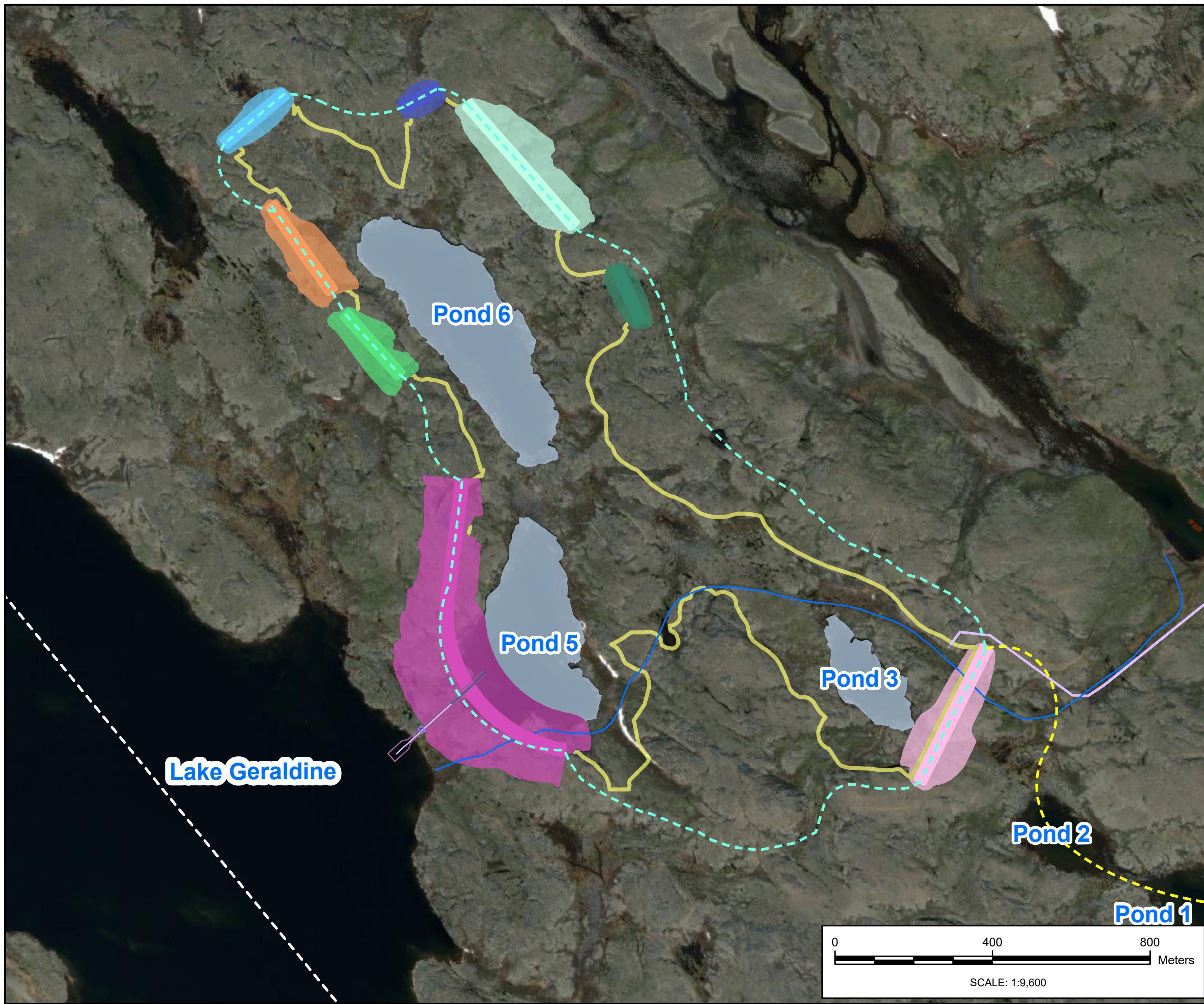
NUNAVUT PLANNING COMMISSION APPLICATION
CITY OF IQALUIT

**APEX RIVER INTAKE AND
RAW WATER PUMP STATION**



ARCADIS

FIGURE
3



LEGEND



















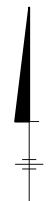
-  SITE AREA
-  PROPOSED ACCESS ROAD
-  RING ROAD
-  APEX RIVER TO LAKE GERALDINE PIPELINE
-  PROPOSED CONNECTION SYSTEM
-  PROPOSED INTAKE
-  WATER CONVEYANCE PIPELINE
-  LAKE QIKIQTALIK PUMP STATION
-  RESERVOIR FOOTPRINT
-  DAM1
-  DYKE2
-  DYKE3
-  DYKE4
-  DYKE5
-  DYKE6
-  DYKE7 (SPILLWAY)
-  DYKE8
-  WATER

Image source: Esri, Maxar, Earthstar Geographics,
and the GIS User Community.
Date: 2022/07/08



NUNAVUT PLANNING COMMISSION APPLICATION
CITY OF IQALUIT

**NEW RESERVOIR DAMS AND
DIKE LOCATIONS**

