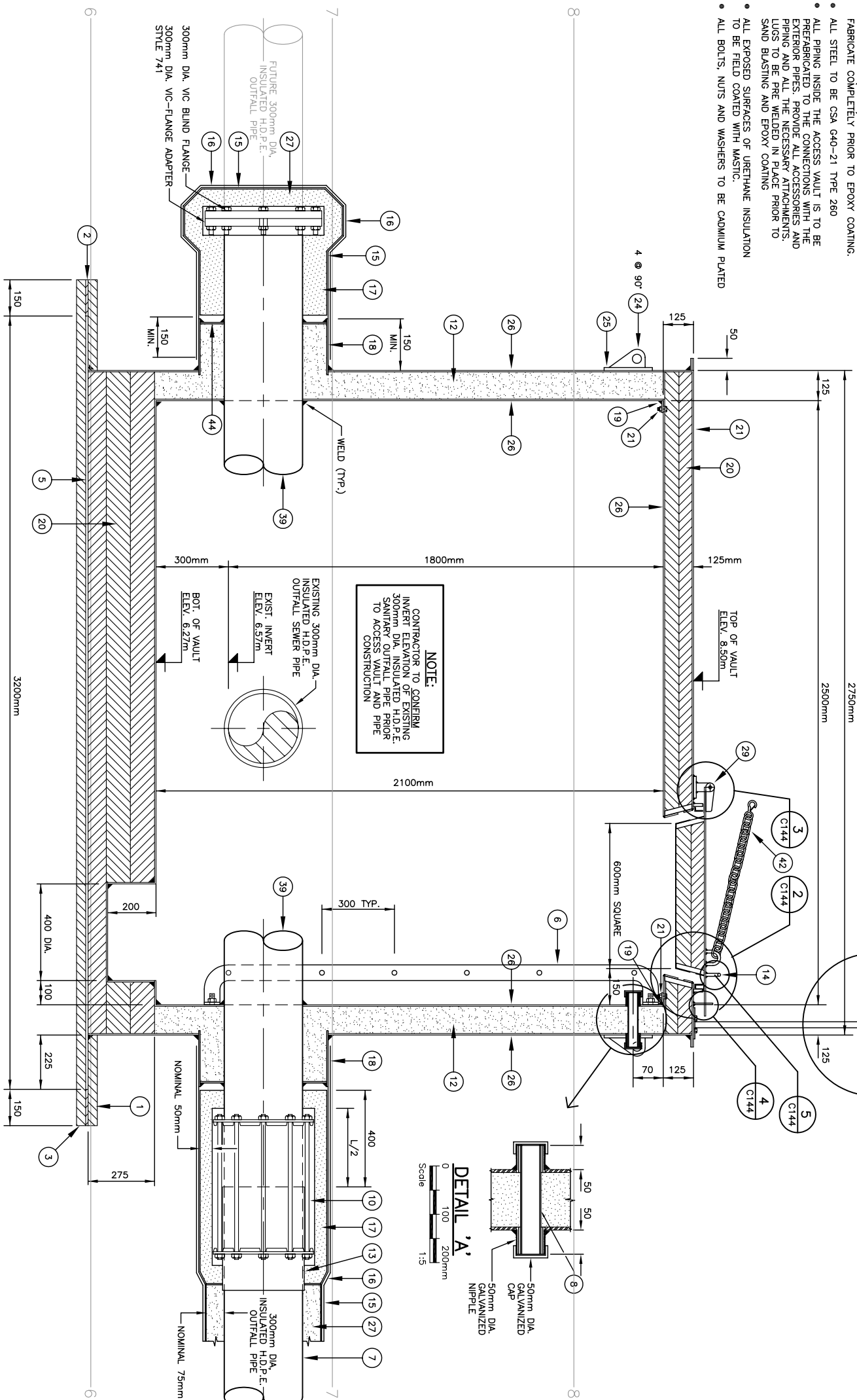


GENERAL NOTES:

- FILL VOID BETWEEN PRE-INSULATED PIPE AND PRE-FORMED INSULATION HALF-SHELLS WITH FOAMED-IN-PLACE URETHANE
- ALL PREFABRICATED STEEL PARTS OF ACCESS VAULT SHALL BE SAND BLASTED AND EPOXY COATED INSIDE AND OUTSIDE (INSIDE COLOUR TO BE WHITE, OUTSIDE COLOUR TO BE GREY).
- CONSTRUCT ACCESS VAULT FROM 6mm STEEL PLATE WITH CONTINUOUS (FULLY) WELDED CONSTRUCTION. FABRICATE COMPLETELY PRIOR TO EPOXY COATING.
- ALL STEEL TO BE CSA G40-21 TYPE 280
- ALL PIPING INSIDE THE ACCESS VAULT IS TO BE PREFABRICATED TO THE CONNECTIONS WITH THE EXTERIOR PIPES. PROVIDE ALL ACCESSORIES AND LUGS TO BE PRE WELDED IN PLACE PRIOR TO SAND BLASTING AND EPOXY COATING
- ALL EXPOSED SURFACES OF URETHANE INSULATION TO BE FIELD COATED WITH MASTIC.
- ALL BOLTS, NUTS AND WASHERS TO BE CADMIUM PLATED

LADDER EXTENSION DETAILS

6 C144 7 C144



STEEL PREFABRICATED ACCESS VAULT TYPICAL CROSS-SECTION



KEY TO NUMBERED PARTS

- 1 38mm THICK STYROFOAM, CUT TO MATCH EXTERIOR WALL RADIUS.
- 2 FILLER PIECE, 10mm THICK INSULATION.
- 3 38mm THICK STYROFOAM INSULATION.
- 4 20mm THICK HIGH DENSITY POLYETHYLENE SHEET.
- 5 10mm THICK SQUARE STEEL BASE
- 6 LADDER LENGTH AS REQUIRED. SEE DETAIL ON DRAWING C4-03
- 7 I.P.S. H.D.P.E. PIPE D.R.11
- 8 20 GAUGE METAL (DO NOT USE 6mm PLATE).
- 9 FORD STANDARD STEEL COUPLING STYLE FC3, LENGTH: 300mm DIA. PIPE - 750mm
- 10 FOAMED-IN-PLACE INSULATION (URETHANE).
- 11 STAINLESS STEEL INSERT FOR H.D.P.E. PIPE LENGTH TO SUIT, WELDED, 400mm LENGTH
- 12 HANDLE, 12mm DIA. GALVANIZED STEEL
- 13 FIRST LAYER OF HEAT SHRINK SLEEVE (0.9mm) THICK BLACK POLYETHYLENE SELF ADHESIVE).
- 14 SECOND LAYER OF HEAT SHRINK SLEEVE (SAME AS ITEM 13 ABOVE).
- 15 INSULATED COVER FOR FLANGED JOINT, O.D. TO MATCH O.D. OF ITEM 16
- 16 SIZE TO SUIT, MASTIC COATED.
- 17 OUTER STEEL SLEEVE SECTION WELDED TO ACCESS VAULT OUTER WALL 10mm THK. PROTRUDING 200mm, O.D. 650mm FOR 300mm DIA.
- 18 10mm x 50mm CONTINUOUSLY WELDED TO EXTERIOR BARREL
- 19 URETHANE SHEET INSULATION CUT TO SIZE, 12mm CAD. PLATED STEEL BOLT, NUT AND WASHER 150mm SPACING.
- 20 LIFTING LUGS - FOUR PER ACCESS VAULT 150mm x 75mm x 12mm THICK WITH 38mm DIA. LIFTING EYE
- 21 REINFORCING PLATE 200mm x 200mm x 12mm CURVED TO EXTERIOR WALL RADIUS
- 22 6mm THICK STEEL PLATE ACCESS VAULT CONSTRUCTION.
- 23 75mm URETHANE PIPE INSULATION, HINGES SPACED AT 400mm APART. SEE DETAIL DRAWING No. C144
- 24 GASKET 50mm x 3mm COMPRESSIBLE NEOPRENE RUBBER.
- 25 #12-30 PAN HEAD SHEET METAL SCREWS AT 100mm SPACING.
- 26 HASP ASSEMBLY, SEE DETAIL DWG. No. C144
- 27 12mm x 38mm x 500mm STEEL BAR ALL AROUND HATCH (INSIDE HINGES), TAPPED FOR (39)
- 28 20mm x 38mm CLOSED CELL NEOPRENE ASTIM D1105-65, GRADE 2A2-CEI/F2MP PERMASTIK 1220X OR EQUAL.
- 29 6mm GALVANIZED BOLT NUT AND WASHER AT 100mm SPACING.
- 30 6.5mm x 17mm SPACER, GALVANIZED PIPE.
- 31 3mm x32mm x 20mm GALVANIZED IRON.
- 32 SCHEDULE 80 STEEL PIPE, SIZE TO SUIT. EPOXY COATED AFTER VAULT FABRICATION
- 33 38mm WIDE TERTON TAPE, LOW TEMPERATURE ADHESIVE, 15mil.
- 34 1000mm LONG GRADE 30 REGULAR LINK CHAIN WITH SAFETY HOOK
- 35 c/w SNAP LINKS ON BOTH SIDES
- 36 10mm STEEL RING, WELD TO OUTER SLEEVE AND STEEL PIPE
- 37 10mm THK. STEEL PLATE, 50mm x 225mm
- 38 25mm DIA. GALVANIZED STEEL BAR

PARTS MARKED ON * SEE DETAILS ON DRAWING No. C144



A You Internet One Ltd Company
17203-1374 Avenue
EDMONTON, ALBERTA
T5S 1A4 CANADA
Tel: 780-488-6000
Fax: 780-488-6173
www.earthtech.ca

PERMIT TO PRACTICE
EARTH TECH (CANADA) INC.
Original Date: 2005-03-10
Original Signature: GLENN PROSKO
PERMIT NUMBER: P 005
The Association of Professional Engineers,
Geologists and Geophysicists of the NWT/NL



No.	Date	Description
0	2005 3/14	ISSUED FOR TENDER
REVISIONS		

Iqaluit
CITY of IQALUIT,
Nunavut

Design	R.H.B./G.A.P.
Drawn	R.L.H.
Approved	
Checked	
Project Title	CITY OF IQALUIT WASTEWATER TREATMENT PLANT PHASE 1
Drawing Title	ACCESS VAULT TYPICAL CROSS-SECTION

Scale	AS NOTED	Date
Project No.	75360	2005-03-09
Drawing No.	C143	Revision 0