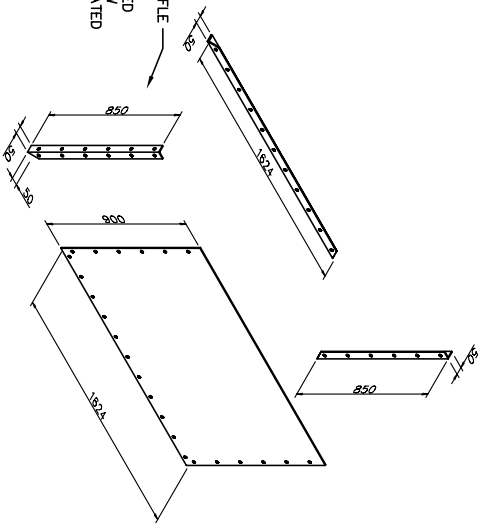


TEMPORARY WATER TIGHT BAFFLE
(STAINLESS STEEL OR EPOXY
COATED STEEL PANEL) LOCATED
BLOCKING THE OPENING BELOW
BEAM. BAFFLE TO BE RELOCATED
IN PHASE 2.

DETAIL B NOTES:

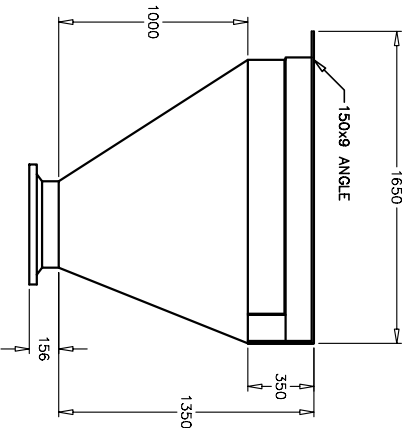
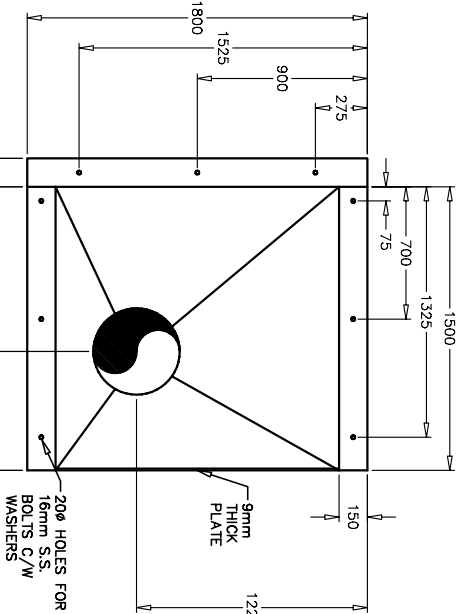
1. PROVIDE GASKET MATERIAL TO SEAL THE ANGLE TO THE WALLS AND PLATE.
2. PROVIDE 12mmØ STAINLESS STEEL BOLTS, NUTS, WASHERS AND INSERTS TO FASTEN THE PLATE TO THE ANGLES AND THE ANGLES TO THE CONCRETE.

B DETAIL
P132 N.T.S.

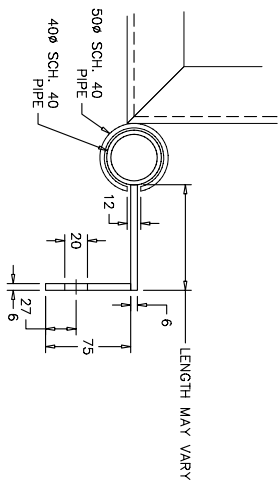
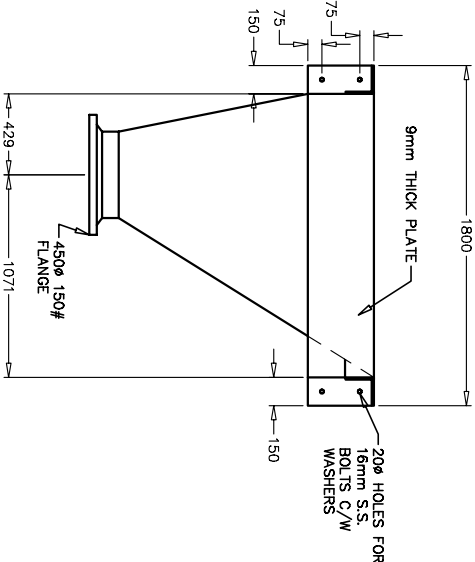


NOTES:

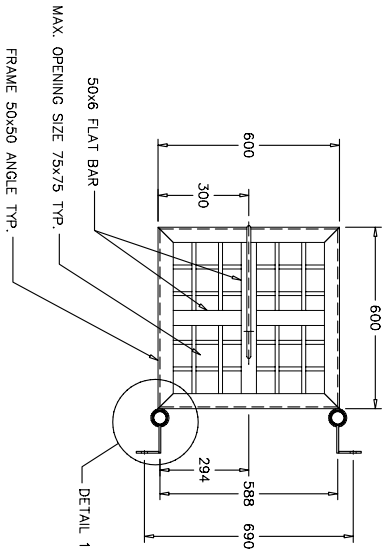
1. HOPPER MATERIAL TO BE 6mm THICK PLAIN CARBON STEEL PLATE.
2. INTERIOR COATED WITH AN ANT-FRICTION COATING SEE SPECIFICATIONS FOR MORE DETAIL.
3. PRIME COAT THE EXTERIOR AND FINISH COAT TO THE OWNERS CHOICE OF COLOUR.
4. ALL WELDS ARE TO BE CONTINUOUS.
5. PROVIDE INSERTS AND MOUNTING HARDWARE TO MOUNT THE HOPPER IN THE LOCATION SHOWN ON THE DRAWINGS.



C DETAIL
P132 SCALE 1:20



DETAIL 1



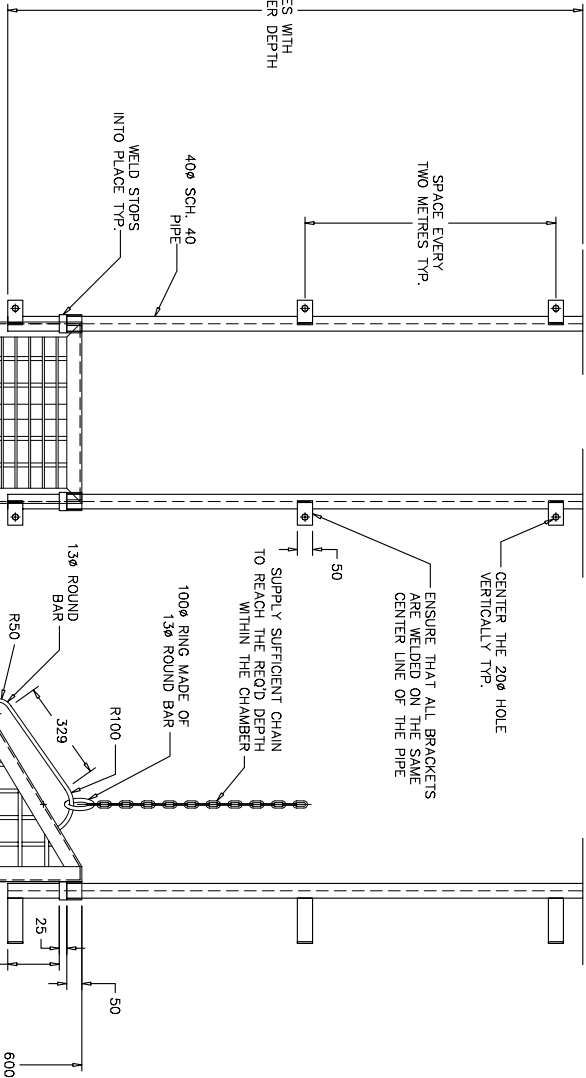
CENTER THE 200 HOLE
VERTICALLY TYP.

ENSURE THAT ALL BRACKETETS
ARE WELDED ON THE SAME
CENTER LINE OF THE PIPE

SUPPLY SUFFICIENT CHAIN
TO REACH THE REQD DEPTH
WITHIN THE CHAMBER

WELD STOPS
INTO FLANGE TYP.

406 SCH. 40
PIPE



DETAIL A NOTES:

1. PROVIDE FLYGT LIFTING DEVICE (GRIP EYE).
2. ALL FABRICATED MATERIAL TO BE HOT DIPPED GALVANIZED. NO WELDING OR DRILLING AFTER FABRICATION.
3. ENSURE THAT THE BASKET GUIDES SLIDE PAST THE GUIDE RAIL SUPPORTS.
4. USE APPROPRIATE STAINLESS STEEL FASTENERS TO ATTACH THE GUIDE RAILS TO THE CHAMBER WALLS.

A DETAIL
P131 N.T.S.

0	2005 ISSUED FOR TENDER
No	Date
	Description
REVISIONS	

Design	SNO/RB
Drawn	DKB
Approved	
Checked	
Project Title	
CITY OF IQALUIT WASTEWATER TREATMENT PLANT PHASE 1	
Drawing Title	
PROCESS LAYOUT DETAILS	

Scale	AS NOTED
Project No.	75360
Date	07.03.05
Drawing No.	P133
Revision	0