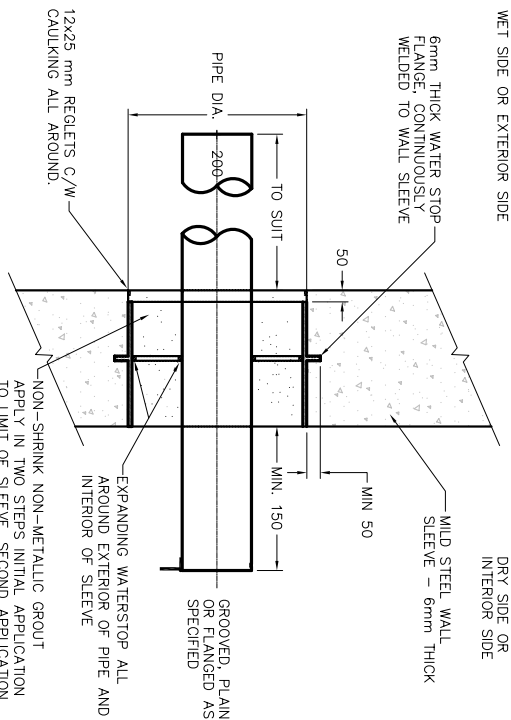


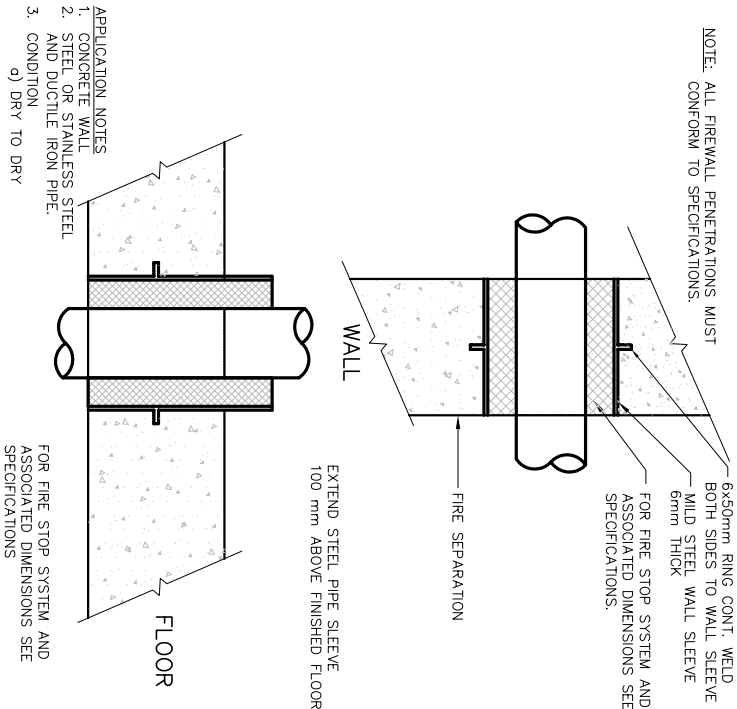
- APPLICATION NOTES
1. CONCRETE WALL
 2. STEEL OR STAINLESS STEEL PIPE.
 3. CONDITION
 - a) WET TO DRY
 - b) WET TO WET
 - c) INTERIOR TO EXTERIOR
 4. NO TRANSVERSE MOVEMENT ALLOWED
 5. LIQUID SIDE MUST PASS LEAKAGE TEST TO WHICH STRUCTURE IS SUBJECTED.
 6. SAME DETAIL FOR VERTICAL OR HORIZONTAL WALL.
 7. PIPE MAY BE CAST IN PLACE WITHIN THE FORMWORK, WITH APPROVAL FROM THE ENGINEER.

STD 101 TYPE 1 WALL PENETRATION

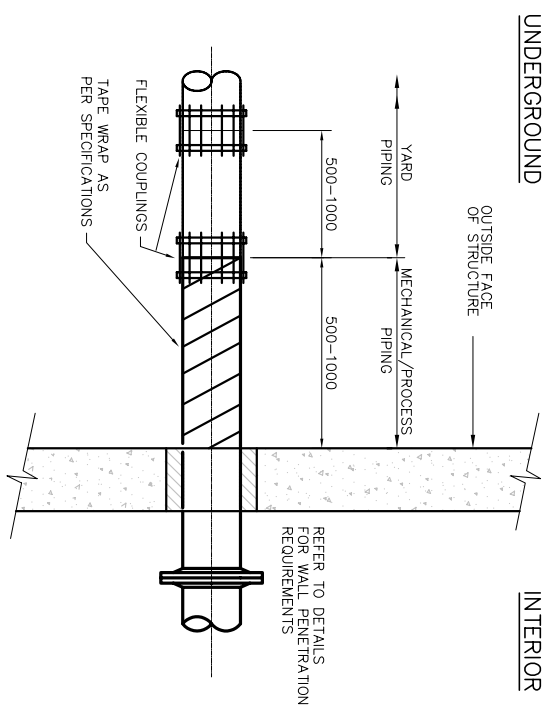


- APPLICATION NOTES
1. CONCRETE WALL
 2. DUCTILE IRON, PVC, PIPE
 3. CONDITION
 - a) WET TO DRY
 - b) WET TO WET
 - c) INTERIOR TO EXTERIOR
 4. NO TRANSVERSE MOVEMENT ALLOWED
 5. LIQUID SIDE MUST PASS LEAKAGE TEST TO WHICH STRUCTURE IS SUBJECTED.
 6. SAME DETAIL FOR VERTICAL OR HORIZONTAL WALL.

STD 102 TYPE 2 WALL PENETRATION



STD 106 TYPE 6 WALL PENETRATION



STD 108 UNDERGROUND PIPE CONNECTION TO STRUCTURE

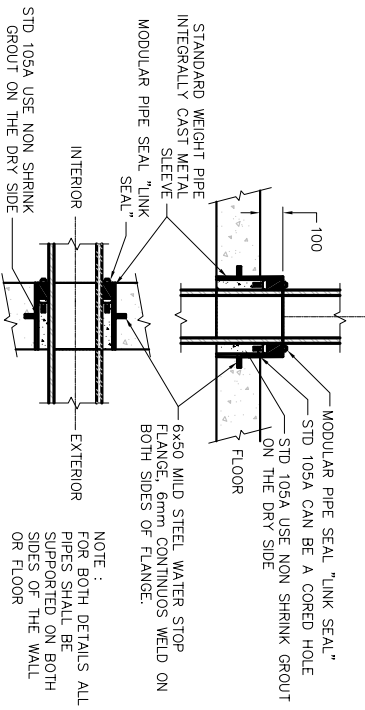
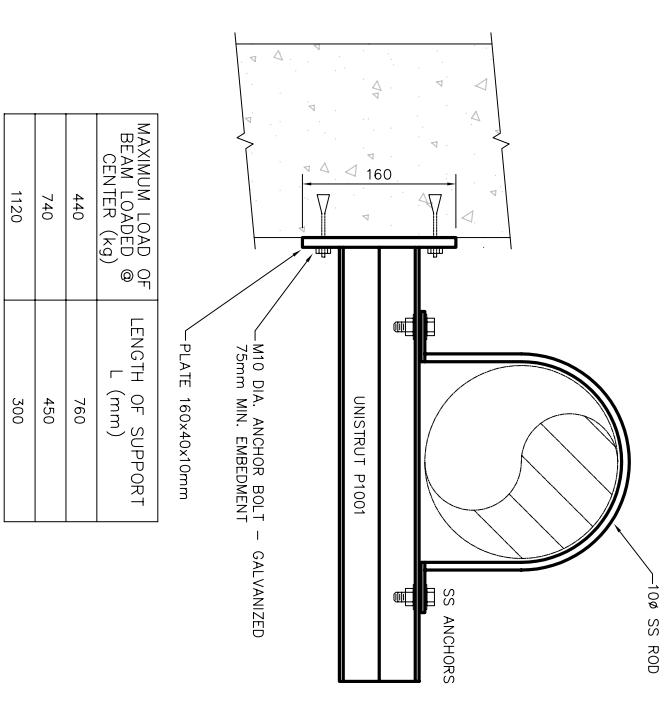


TABLE OF "LINK-SEAL" SERIES FOR STEEL PIPE - FOR OTHER SIZES SEE SUPPLIER'S TABLES

| STEEL PIPE | WALL SLEEVE | LINKS/ SEAL | MODEL NO. | SIZE O.D. mm | STEEL PIPE | WALL SLEEVE | LINKS/ SEAL | LINK-SEAL |
|------------|-------------|-------------|-----------|--------------|------------|-------------|-------------|-----------|
| 13 | 21.3 | 52.5 | 4 | LS-200-C | 250 | 273.1 | 10 | LS-425-C |
| 20 | 28.7 | 62.7 | 5 | LS-275-C | 300 | 323.9 | 12 | LS-425-C |
| 25 | 33.4 | 62.7 | 5 | LS-200-C | 350 | 355.6 | 13 | LS-425-C |
| 32 | 42.2 | 77.9 | 7 | LS-275-C | 400 | 406.4 | 15 | LS-400-C |
| 38 | 48.3 | 90.1 | 5 | LS-300-C | 450 | 457.2 | 16 | LS-400-C |
| 50 | 60.3 | 102.3 | 6 | LS-300-C | 500 | 508.0 | 18 | LS-500-C |
| 75 | 89.0 | 128.2 | 8 | LS-300-C | 600 | 609.6 | 21 | LS-500-C |
| 100 | 114.3 | 154.1 | 10 | LS-300-C | 750 | 762.0 | 26 | LS-500-C |
| 125 | 141.3 | 202.7 | 6 | LS-425-C | 900 | 914.4 | 21 | LS-500-C |
| 150 | 168.3 | 254.5 | 7 | LS-425-C | 1050 | 1066.8 | 26 | LS-500-C |
| 200 | 219.1 | 304.8 | 12 | LS-475-C | 1200 | 1219.2 | 41 | LS-500-C |

- APPLICATION NOTES
1. CONCRETE WALL
 2. STEEL, STAINLESS STEEL, DUCTILE IRON, PVC OR FRP PIPE: NON-INSULATED.
 3. CONDITION
 - a) DRY TO DRY
 - b) INTERIOR TO UNDERGROUND
 - c) FOR STD 105A WET TO DRY

STD 105A STD 105 TYPE 5 - SINGLE LINK-SEAL WALL PENETRATION



STD 201 TYPE 1 WALL MOUNTED PIPE SUPPORT