

**PERMIT TO PRACTICE
EARTH TECH (CANADA) INC.**
Signature _____
Date _____
PERMIT NUMBER: P 006
The Association of Professional Engineers,
Geologists and Geophysicists of the NW/NT



0	2005 ISSUED FOR TENDER
No	Date Description
REVISIONS	

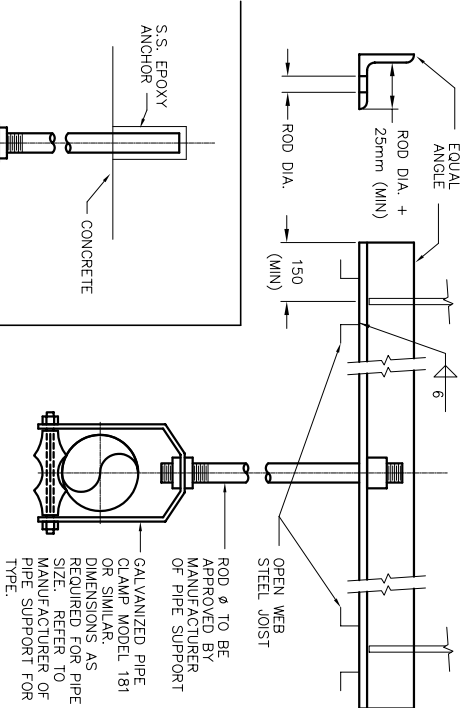
Iqaluit
CITY of IQALUIT,
Nunavut

Design	SNO/RB
Drawn	DKB
Approved	
Checked	

Project Title
**CITY OF IQALUIT
WASTEWATER
TREATMENT PLANT
PHASE 1**

**PROCESS
STANDARD
DETAILS**

Scale	
Project No.	75360
Drawing No.	P153
Date	07.03.05
Revision	0

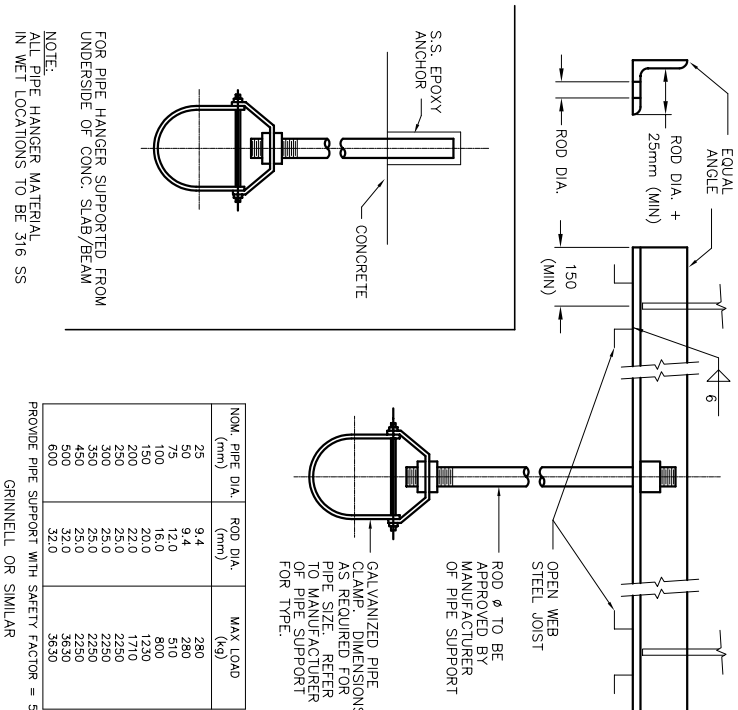


NOM. PIPE DIA. (mm)	ROD DIA. (mm)	MAX. LOAD (kg)
25	9.4	280
50	12.0	510
75	16.0	800
100	20.0	1230
150	25.0	1710
200	32.0	2250
250	38.0	2850
300	45.0	3530
350	50.0	4250
400	57.0	5000
450	63.0	5830
500	70.0	6750

NOTE:
ALL PIPE HANGER MATERIAL
IN WET LOCATIONS TO BE 316 SS
GRINNELL OR SIMILAR

STD
219

PIPE HANGER

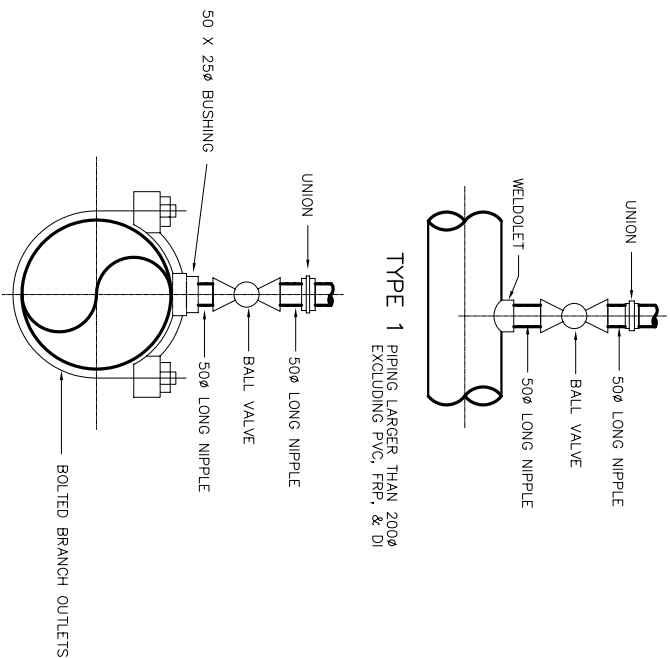


NOM. PIPE DIA. (mm)	ROD DIA. (mm)	MAX. LOAD (kg)
25	9.4	280
50	12.0	510
75	16.0	800
100	20.0	1230
150	25.0	1710
200	32.0	2250
250	38.0	2850
300	45.0	3530
350	50.0	4250
400	57.0	5000
450	63.0	5830
500	70.0	6750

NOTE:
ALL PIPE HANGER MATERIAL
IN WET LOCATIONS TO BE 316 SS
GRINNELL OR SIMILAR

STD
217

PIPE HANGER



TYPE 1
PIPING LARGER THAN 200Ø
EXCLUDING PVC, FRP, & DI

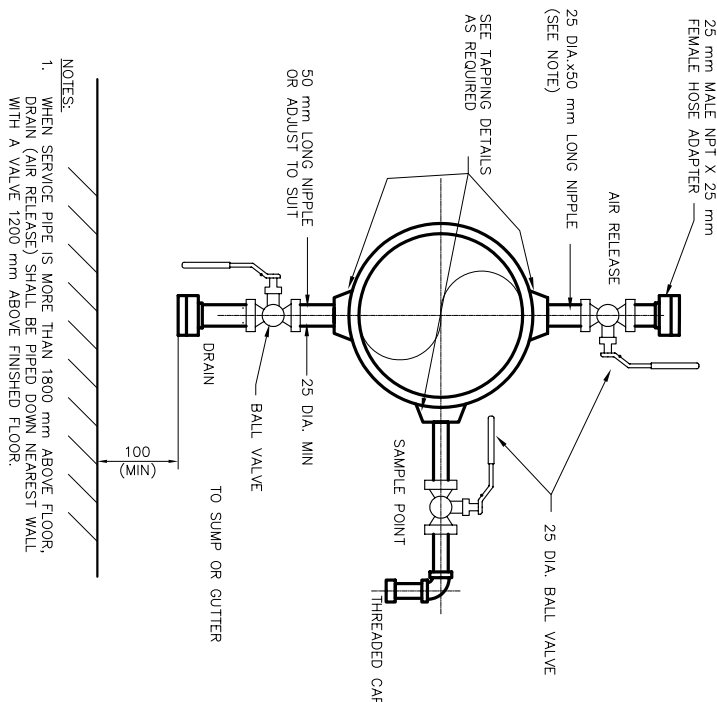
TYPE 2
SERVICE SADDLE FOR ALL PVC, S.S.
FRP, DI & STEEL LINES 200Ø AND LESS.

STD
503

TYPE 1 AND 2 TAPPINGS

STD
504

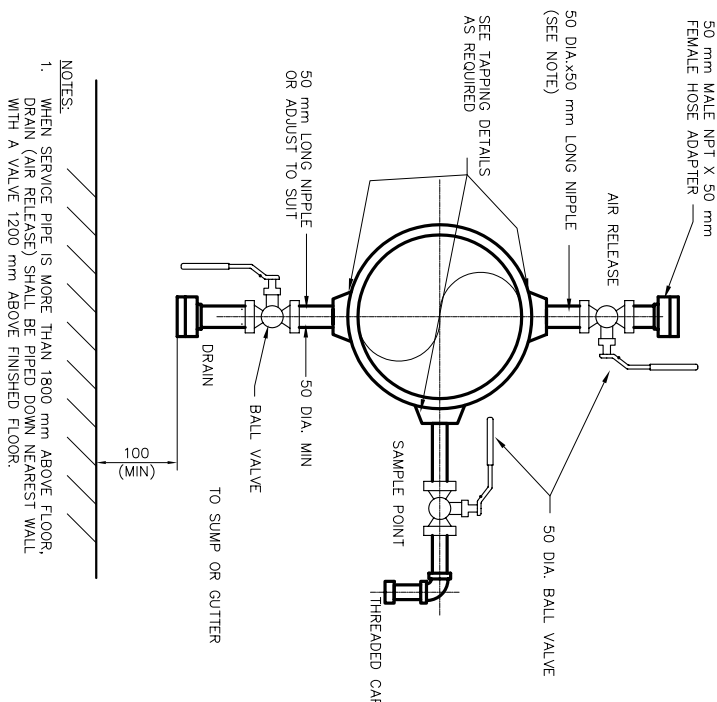
**25mm AIR RELEASE, SAMPLE
AND DRAIN CONNECTION DETAILS**



NOTES:
1. WHEN SERVICE PIPE IS MORE THAN 1800 mm ABOVE FLOOR, DRAIN (AIR RELEASE) SHALL BE PIPED DOWN NEAREST WALL WITH A VALVE 1200 mm ABOVE FINISHED FLOOR.

STD
507

**50mm AIR RELEASE, SAMPLE
AND DRAIN CONNECTION DETAILS**



NOTES:
1. WHEN SERVICE PIPE IS MORE THAN 1800 mm ABOVE FLOOR, DRAIN (AIR RELEASE) SHALL BE PIPED DOWN NEAREST WALL WITH A VALVE 1200 mm ABOVE FINISHED FLOOR.