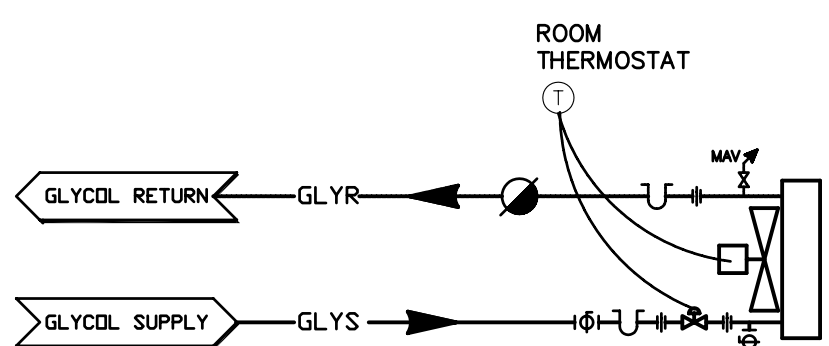
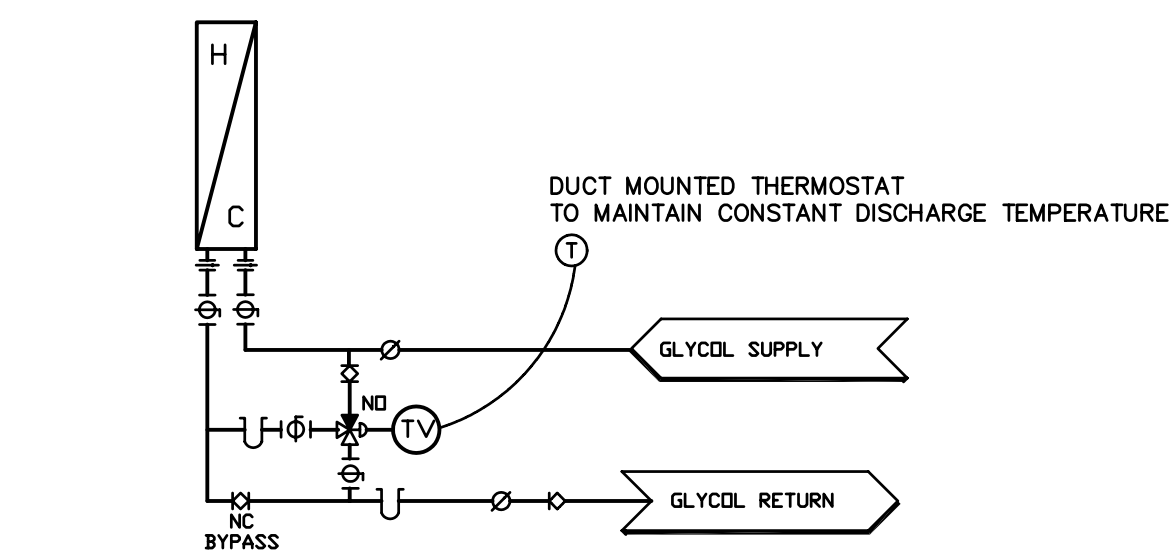


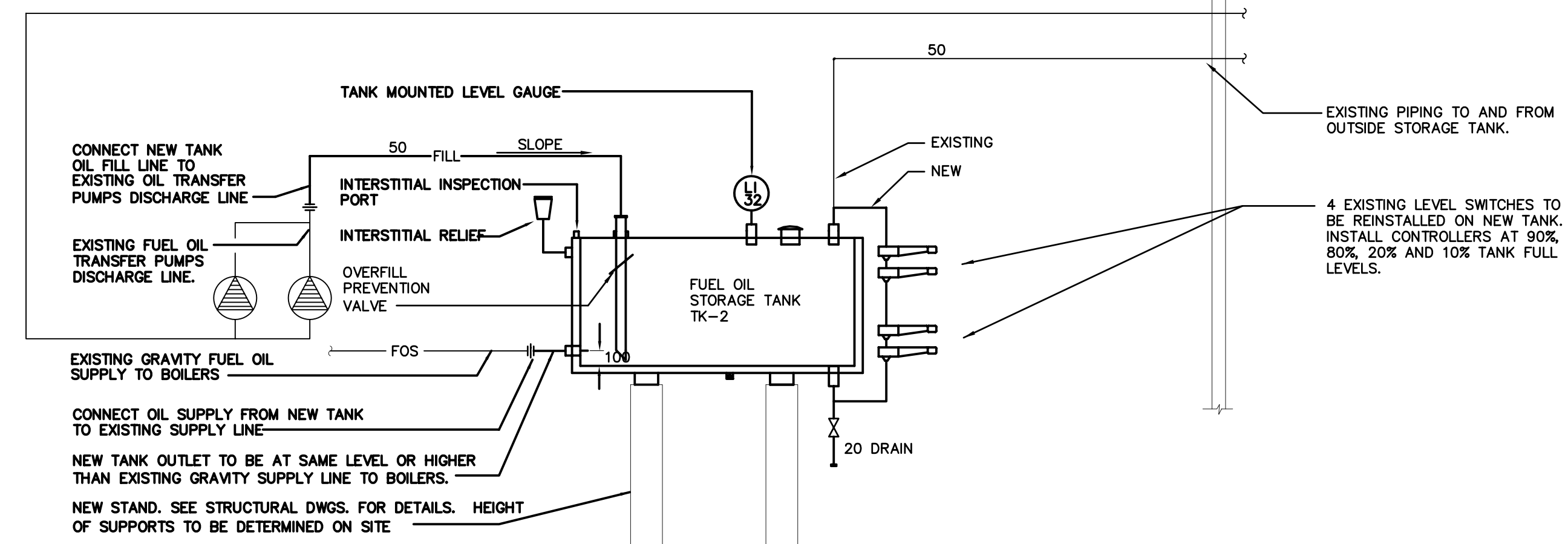
EXHAUST FANS EF-2/4
N.T.S.



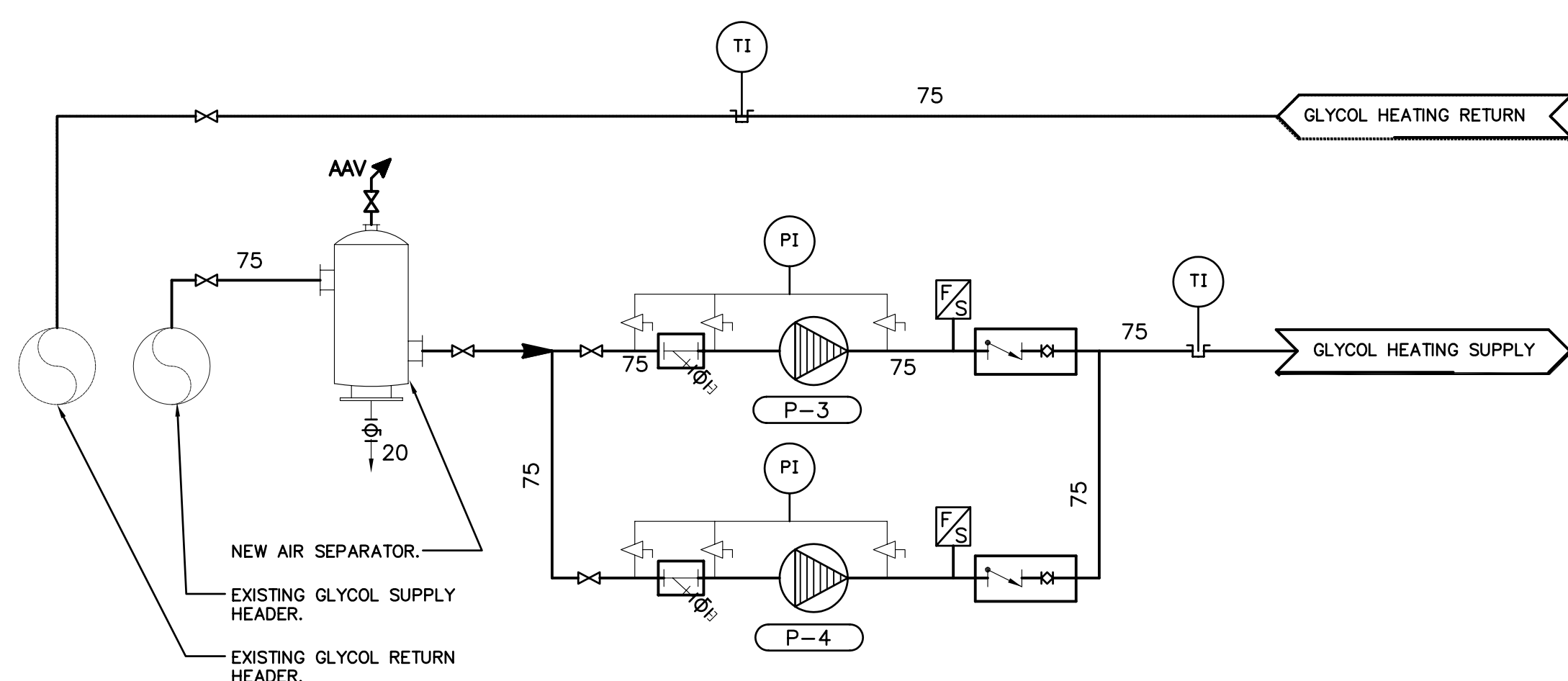
TYPICAL UNIT HEATER & FORCE FLOW SCHEMATIC
N.T.S.



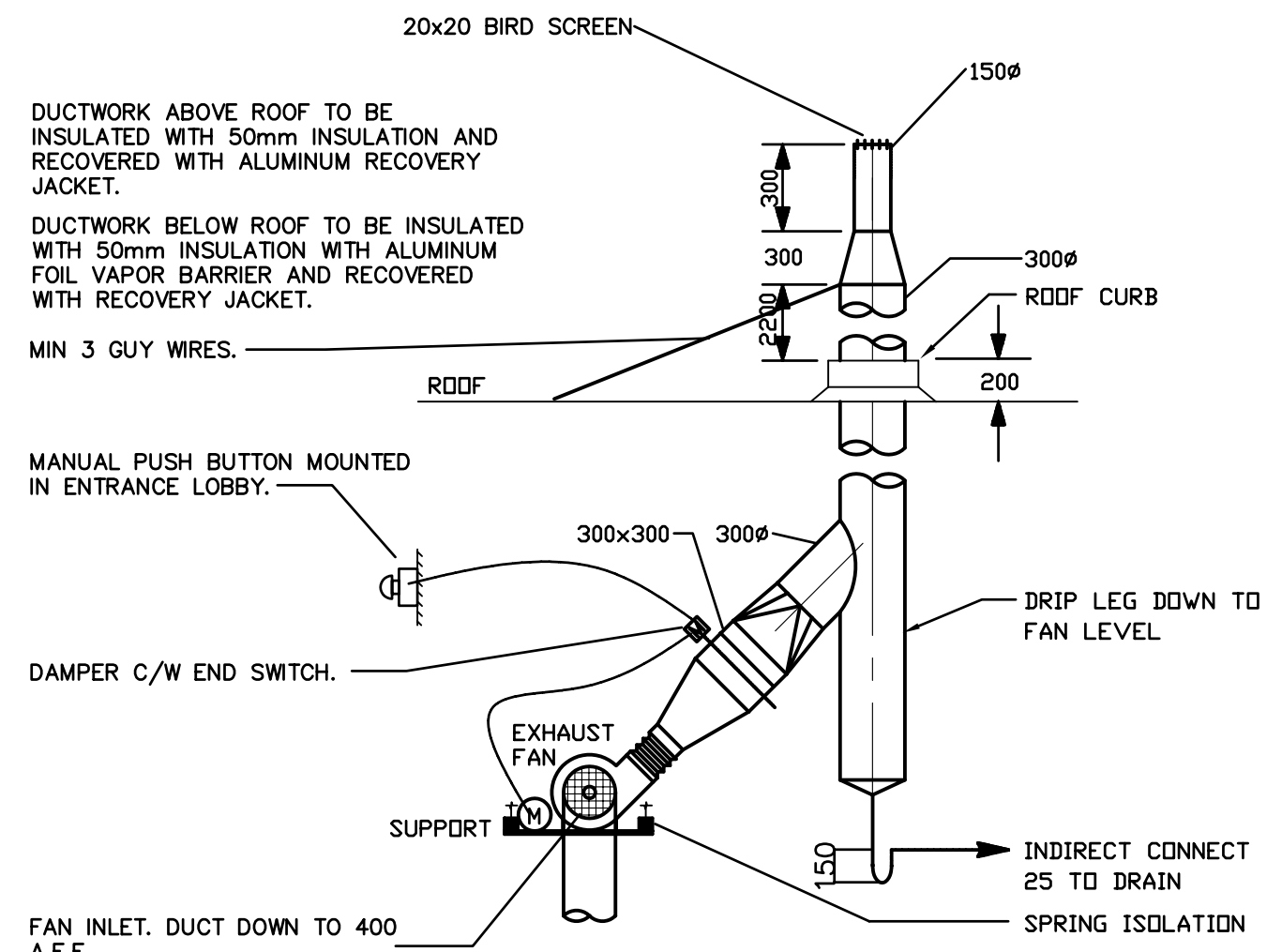
TYPICAL AHU HEATING AND PREHEAT COILS SCHEMATIC
N.T.S.



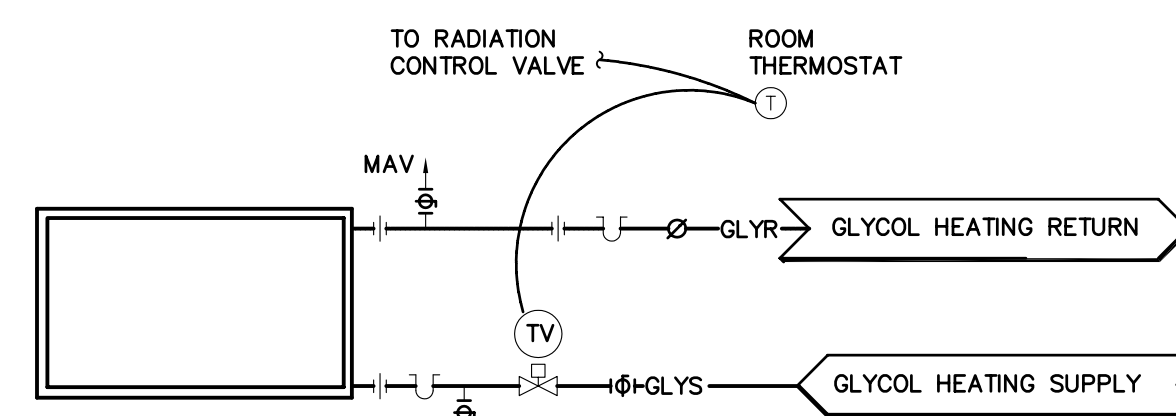
NEW FUEL OIL DAY TANK
N.T.S.



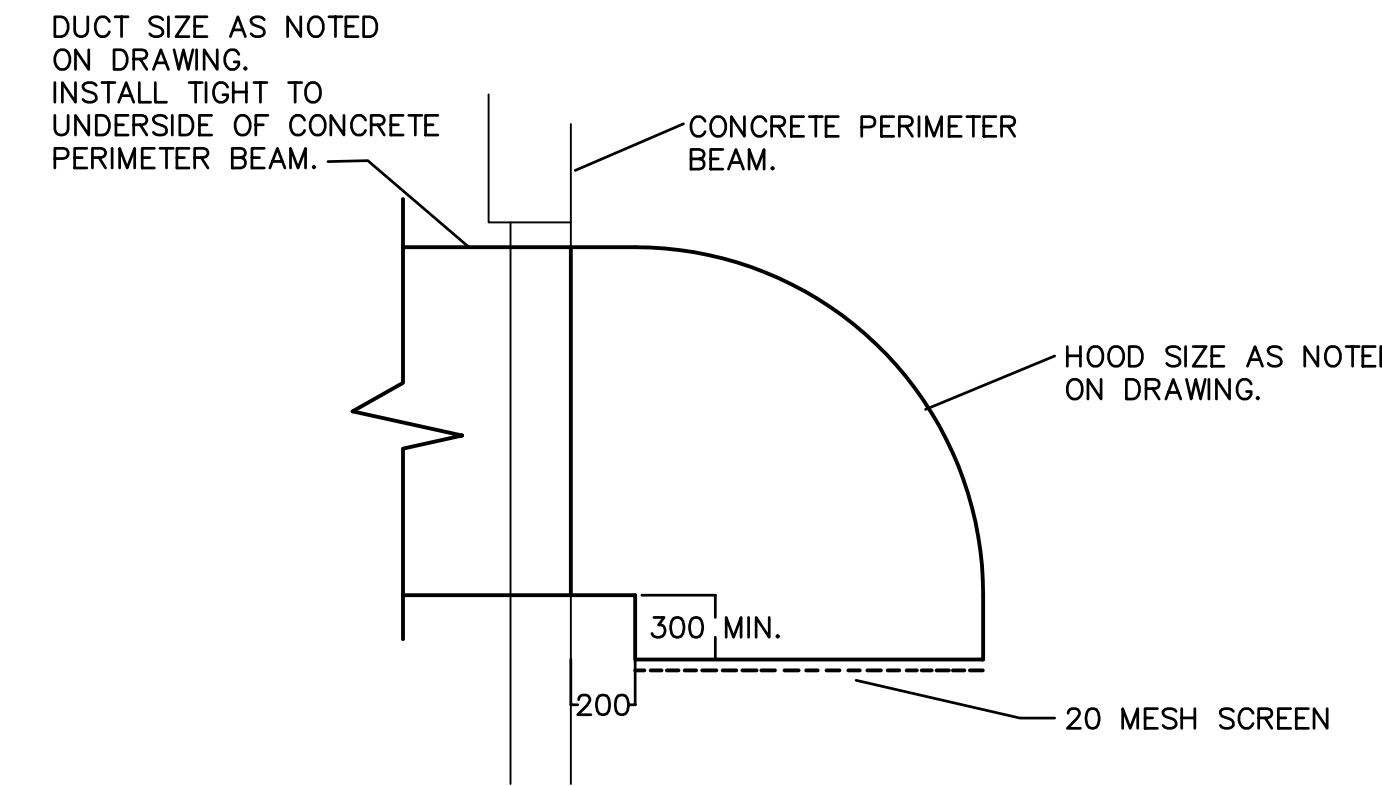
NEW HEATING PUMPS SCHEMATIC
N.T.S.



EXHAUST FAN EF-3
N.T.S.



REHEAT COIL



TYPICAL INLET HOOD
N.T.S.

ET:55524/Cadd File:AI-PROJ-SHT.dwg/Last Edit: 2004-04-06 (17:00)/Plot Scale: 1:1 (A1)

NO.	REVISION	DATE	INITIAL
2	RECORD DRAWING	23/04/04	IV
1	ISSUED FOR CONSTRUCTION	22/04/03	DBF
0	ISSUED FOR TENDER	19/02/03	DBF

Company Permit

Engineer Seal

RECORD DRAWING

INFORMATION CONTAINED IN THESE DRAWINGS IS AS SUPPLIED BY SHENDEL MECHANICAL CONTRACTING LTD.

DATE: MAY 03, 2004

MECHANICAL

SCHEMATICS AND DETAILS

Iqaluit
CITY of IQALUIT,
Nunavut

CITY OF IQALUIT

IQALUIT WATER TREATMENT PLANT

Earth Tech (Canada) Inc.

DRAWN BY: E.J.L.	SCALE: AS NOTED	DATE: FEB. 03, 2003	SHEET NO.
CHECKED BY: DBF	DWG NO. M-4	REV. 1	CONTRACT 55524