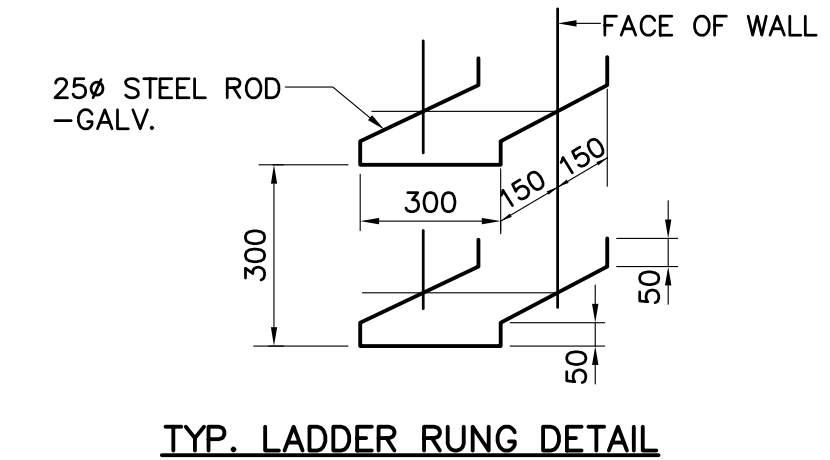
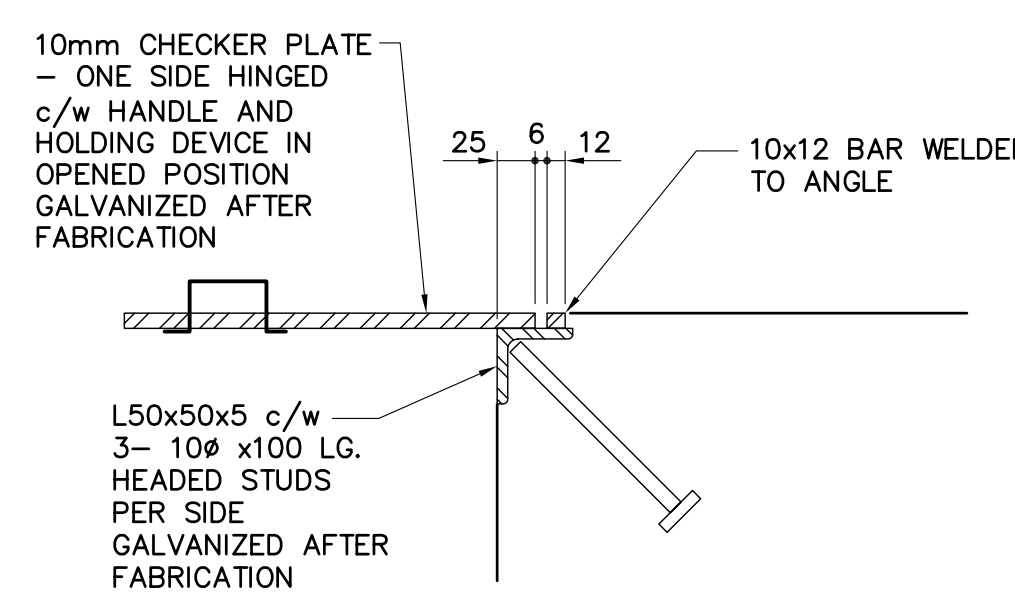
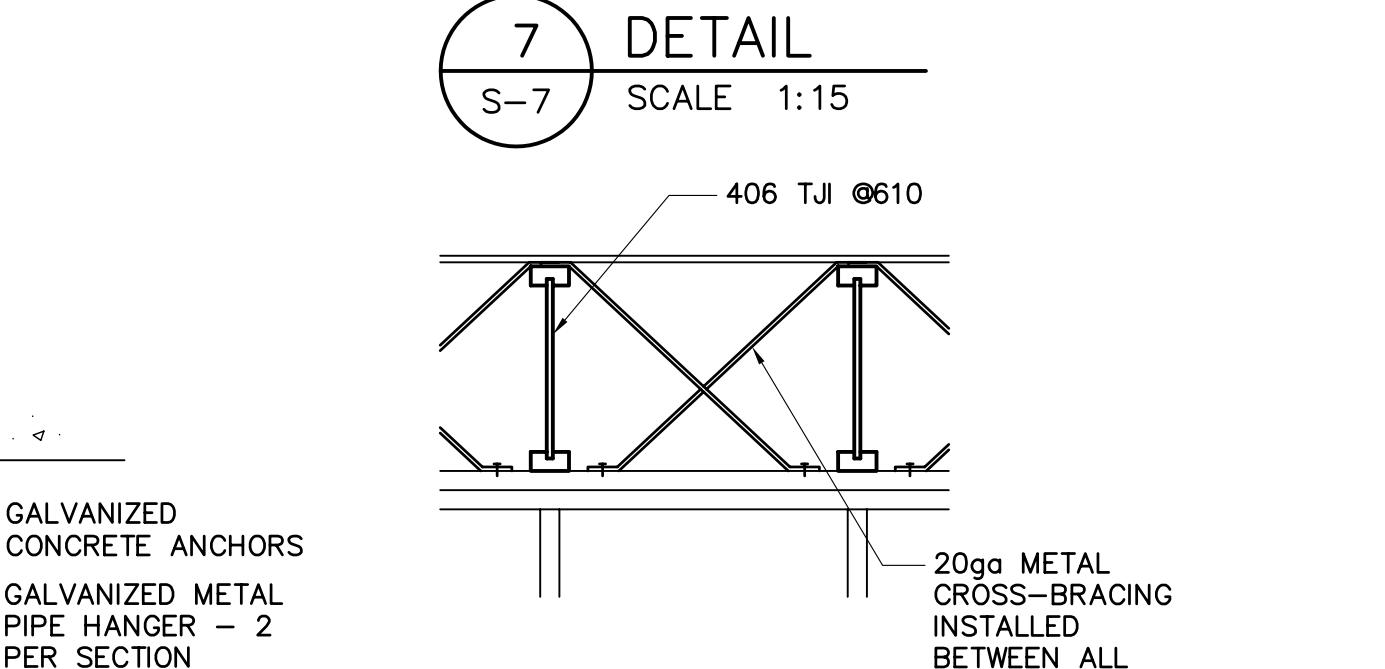
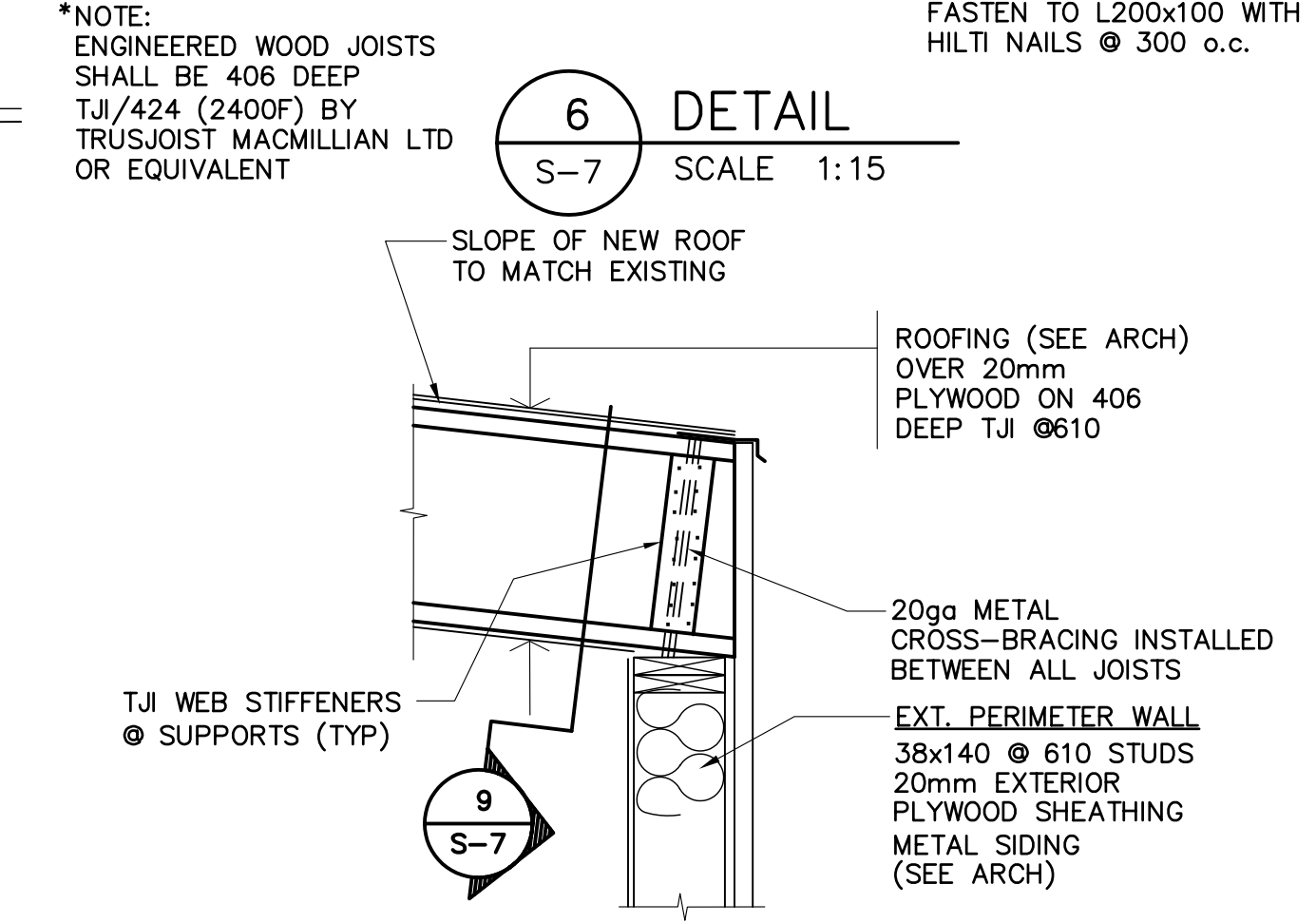
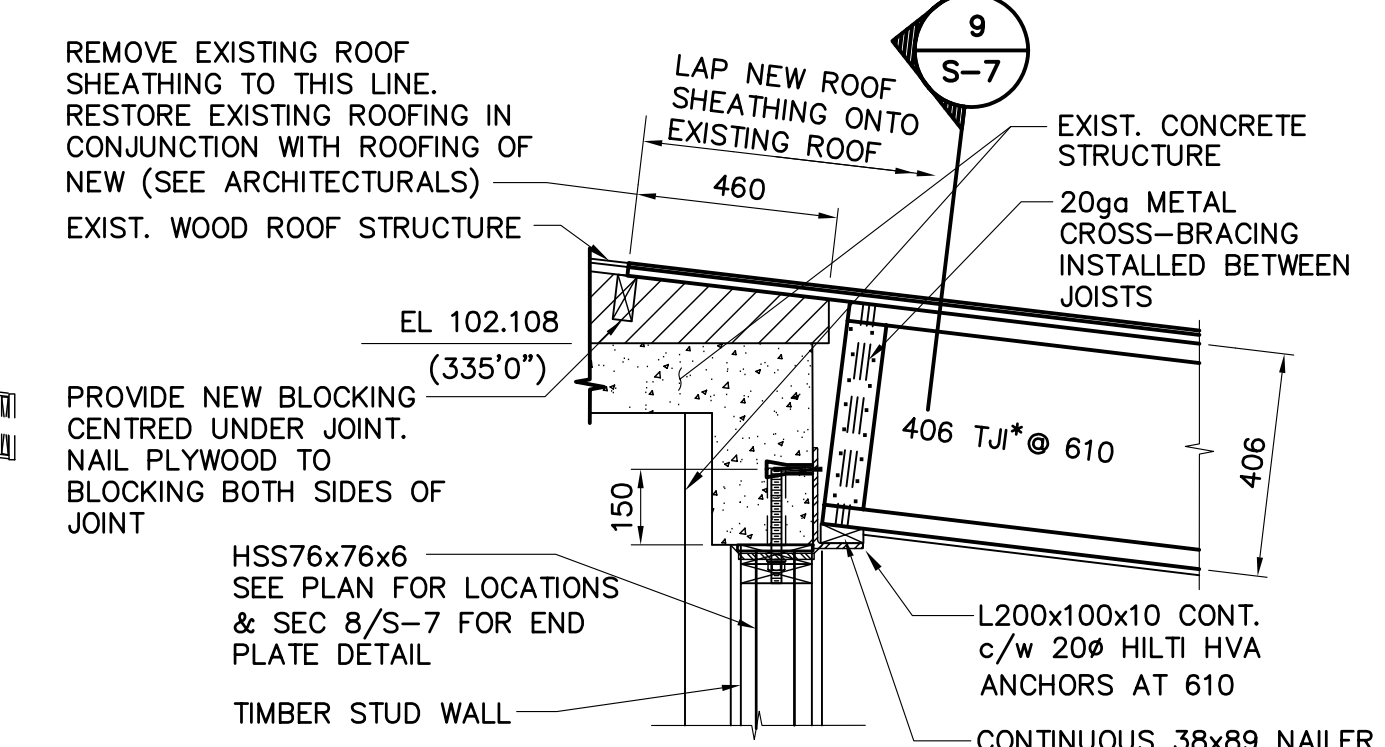
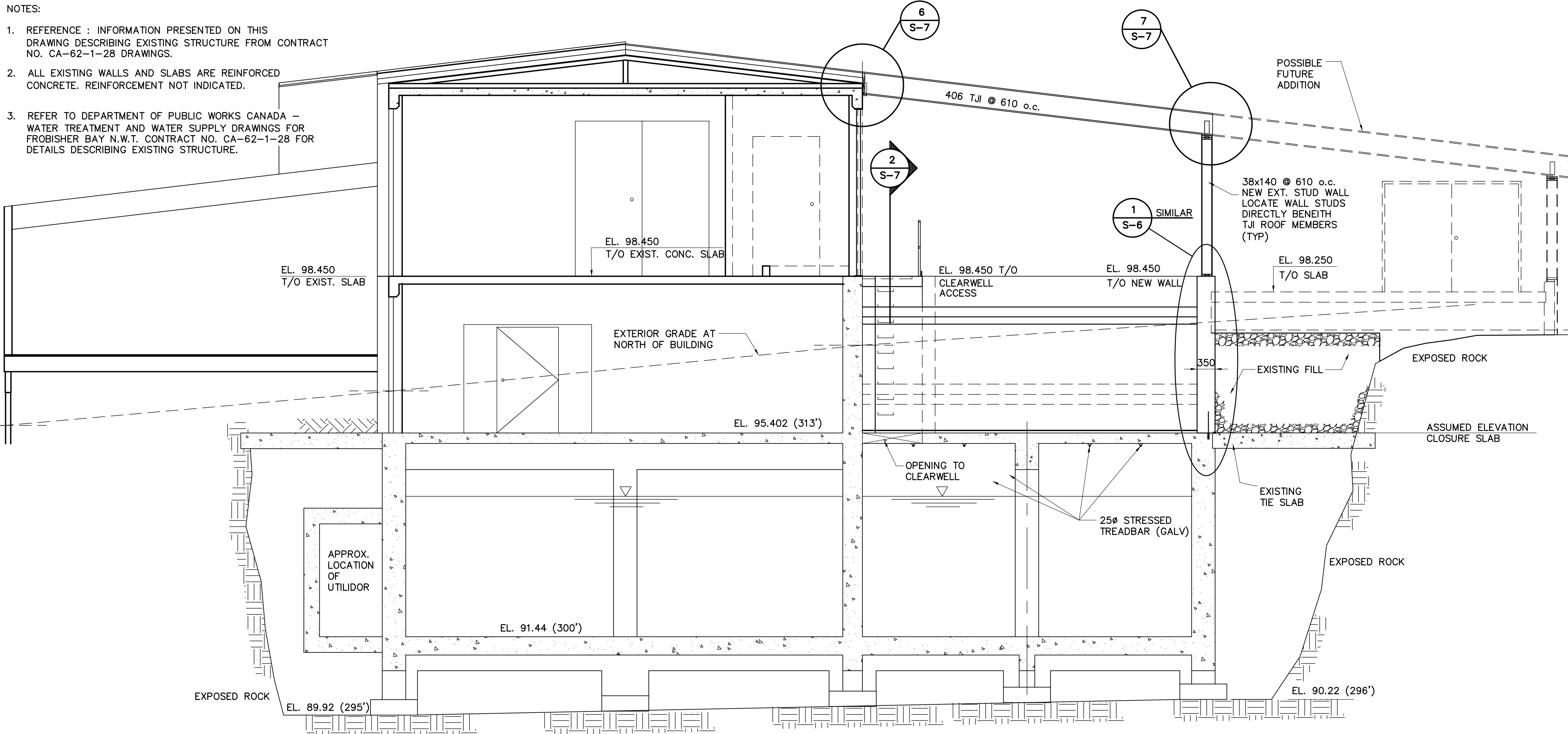


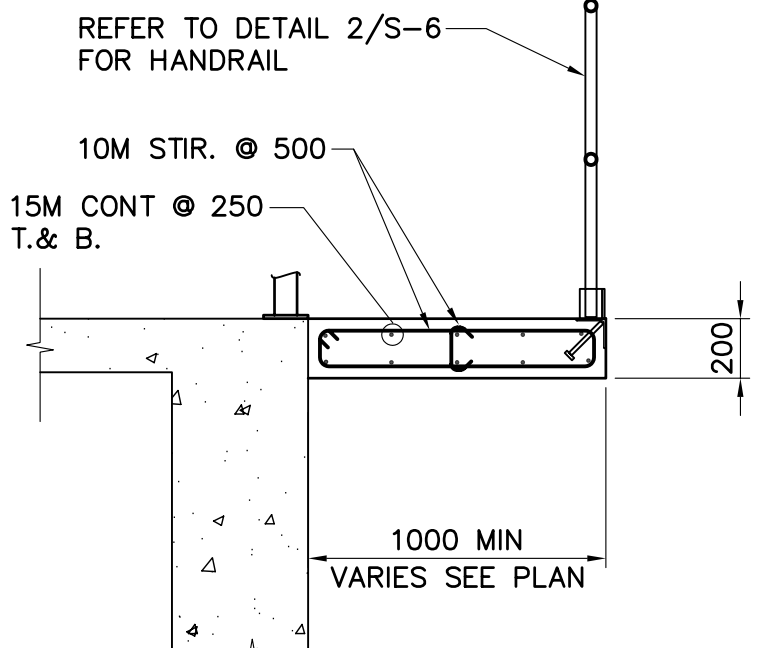
NOTES:

- REFERENCE : INFORMATION PRESENTED ON THIS DRAWING DESCRIBING EXISTING STRUCTURE FROM CONTRACT NO. CA-62-1-28 DRAWINGS.
- ALL EXISTING WALLS AND SLABS ARE REINFORCED CONCRETE. REINFORCEMENT NOT INDICATED.
- REFER TO DEPARTMENT OF PUBLIC WORKS CANADA - WATER TREATMENT AND WATER SUPPLY DRAWINGS FOR FROBISHER BAY N.W.T. CONTRACT NO. CA-62-1-28 FOR DETAILS DESCRIBING EXISTING STRUCTURE.

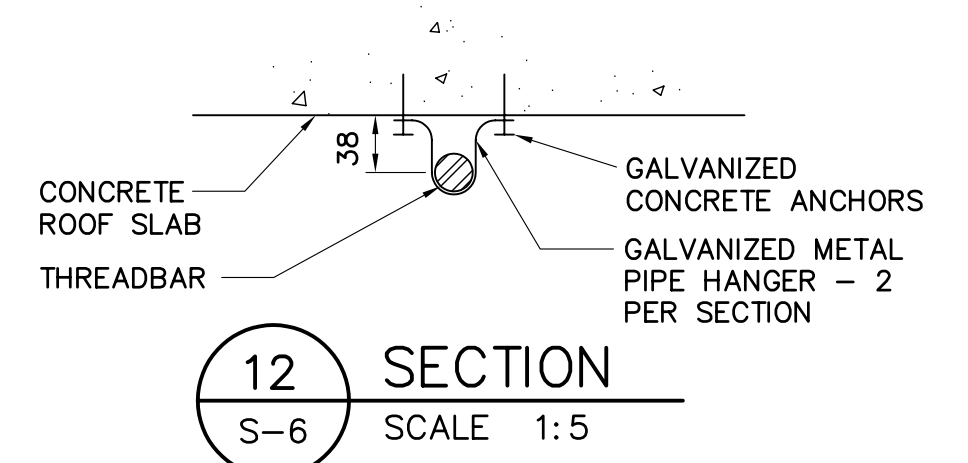


10 DETAIL  
S-7 SCALE 1:25

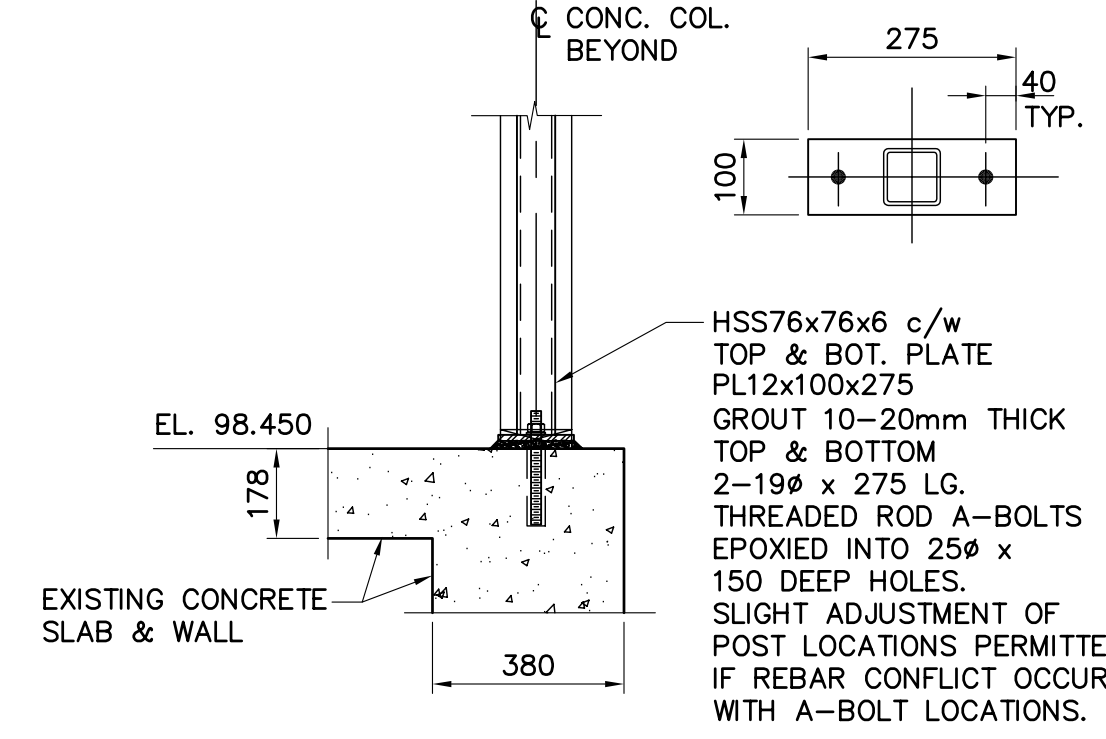
B SECTION  
S-2 SCALE 1:50



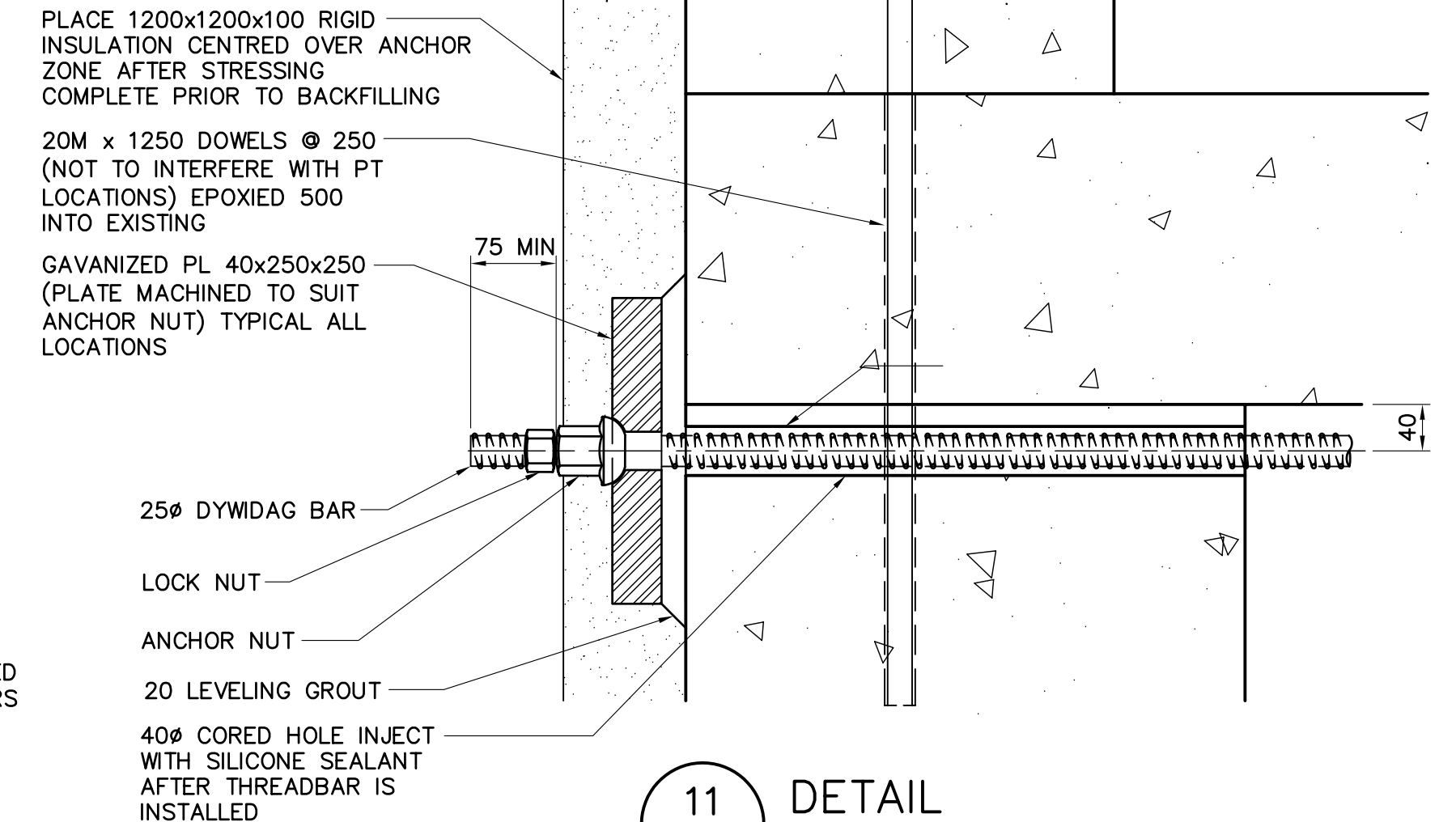
5 SECTION  
S-7 SCALE 1:25



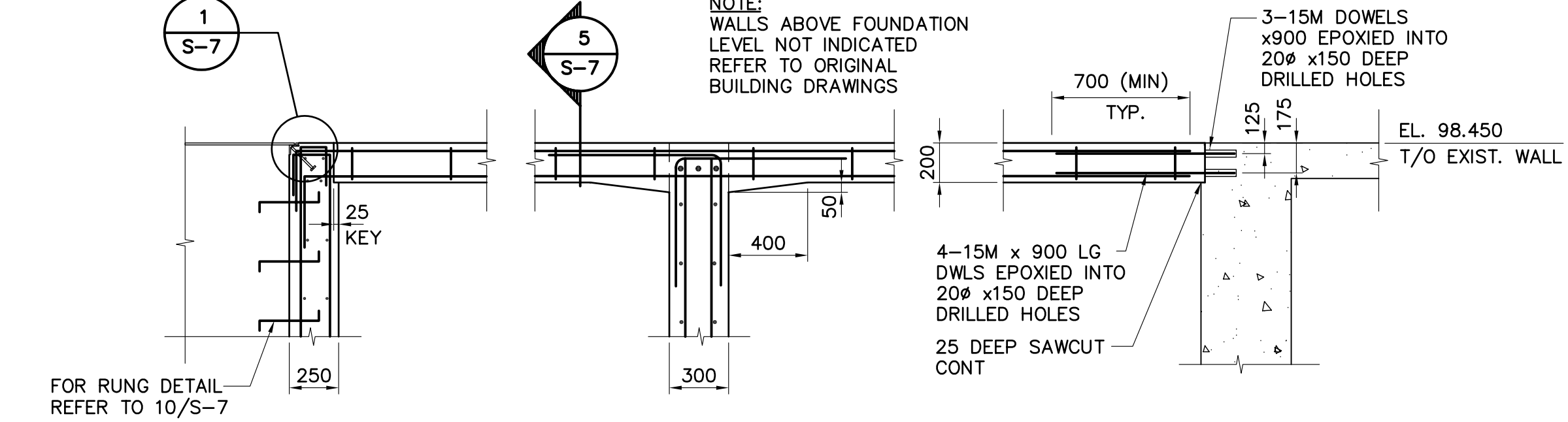
12 SECTION  
S-6 SCALE 1:5



8 SECTION  
S-4 SCALE 1:15



11 DETAIL  
S-6 SCALE 1:5



2 SECTION  
S-5 SCALE 1:25

3 SECTION  
S-5 SCALE 1:25

4 SECTION  
S-5 SCALE 1:25

NO.	REVISION	DATE	INITIAL
2	RECORD DRAWING	23/04/04	
1	ISSUED FOR CONSTRUCTION	22/04/03	
0	ISSUED FOR TENDER	19/02/03	
A	ISSUED FOR FINAL REVIEW	03/02/03	

Company Permit	Engineer Seal
<b>RECORD DRAWING</b> INFORMATION CONTAINED IN THESE DRAWINGS IS AS SUPPLIED BY: NINETY NORTH CONSTRUCTION & DEVELOPMENT LTD. THE COMPLETENESS AND ACCURACY OF THIS RECORD DRAWING IS NOT GUARANTEED. INFORMATION SHOULD BE VERIFIED AT THE ACTUAL LOCATION BEFORE USE.	

STRUCTURAL
SECTIONS AND DETAILS

CITY OF IQALUIT
IQALUIT WATER TREATMENT PLANT

<b>EARTH TECH</b> Earth Tech (Canada) Inc.			
DRAWN BY: BL	SCALE: AS NOTED	DATE: FEB. 19, 2003	SHEET NO.
CHECKED BY: GJK	DWG NO. S-7	REV. 1	CONTRACT 55524

ET:55524/Cadd File: 55524-S06 to S07.dwg/Last Edit: 2003-04-22 (12:00)/Plot Scale: 1:1 (A1)