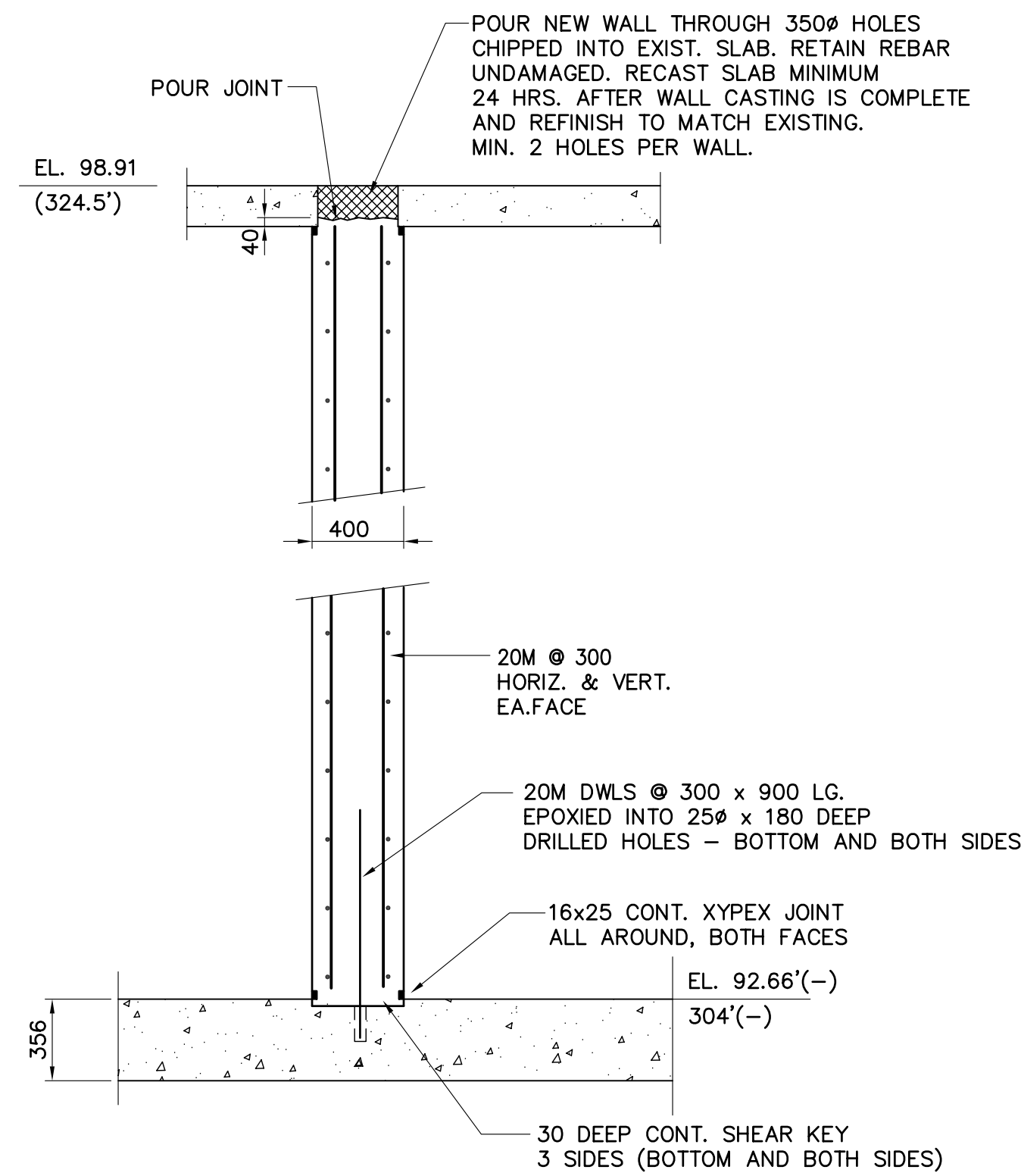
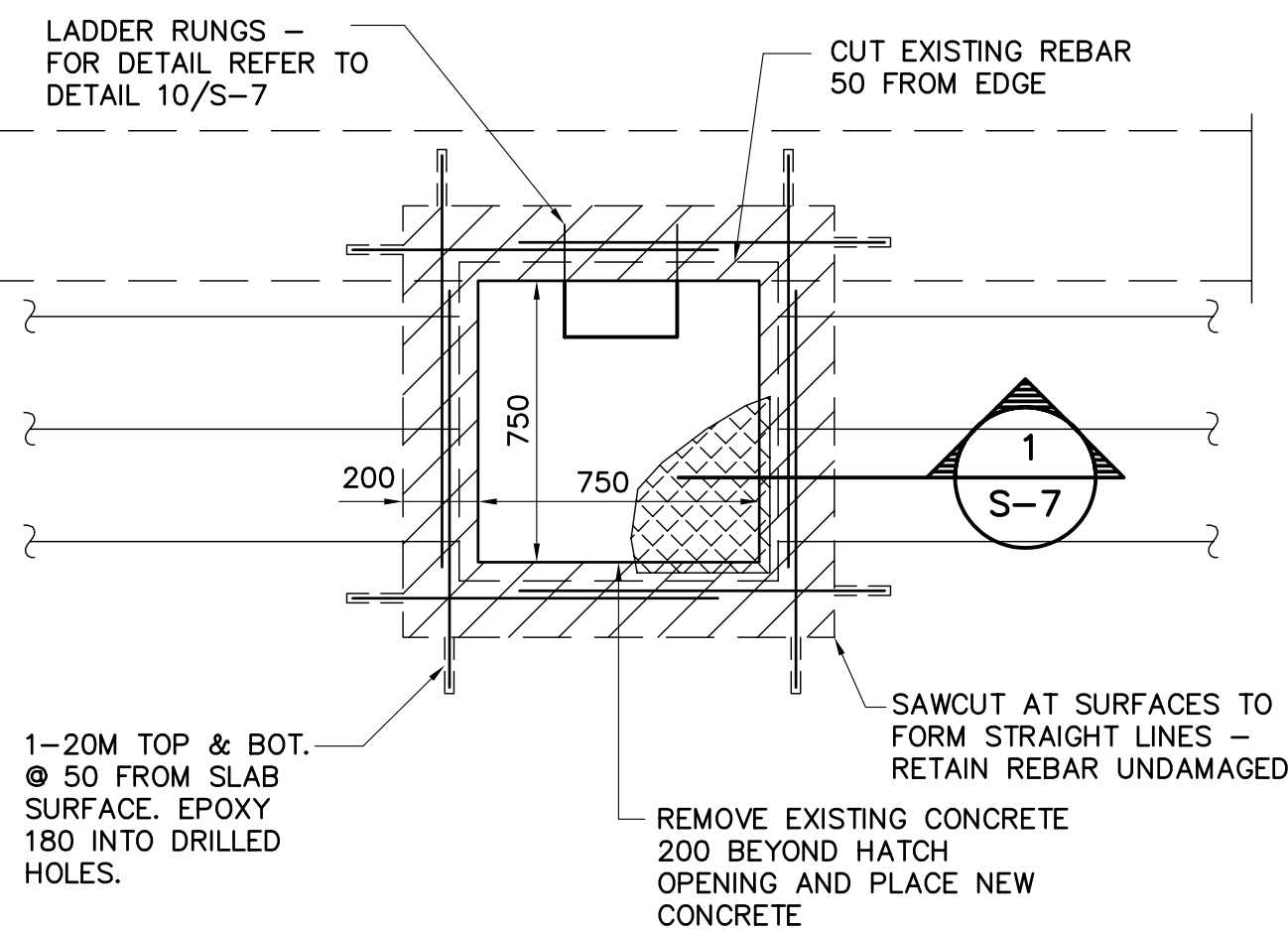


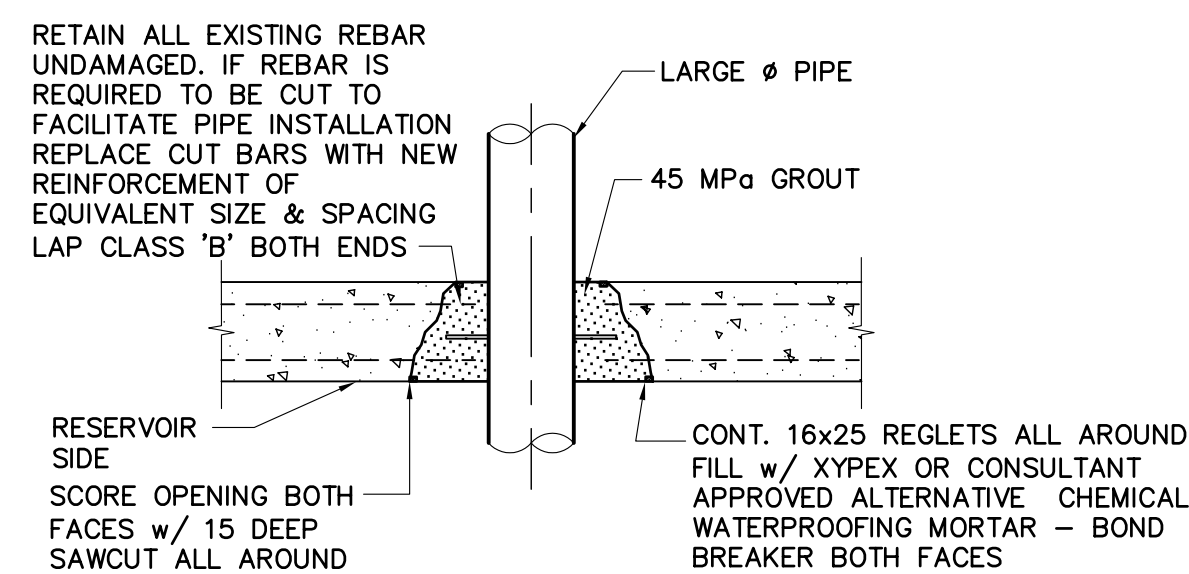
ET:55524/Cadd File: 55524-S02 to S05\_S08\_S09.dwg/Last Edit: 2003-04-22 (12:00)/Plot Scale: 1:1 (A1)



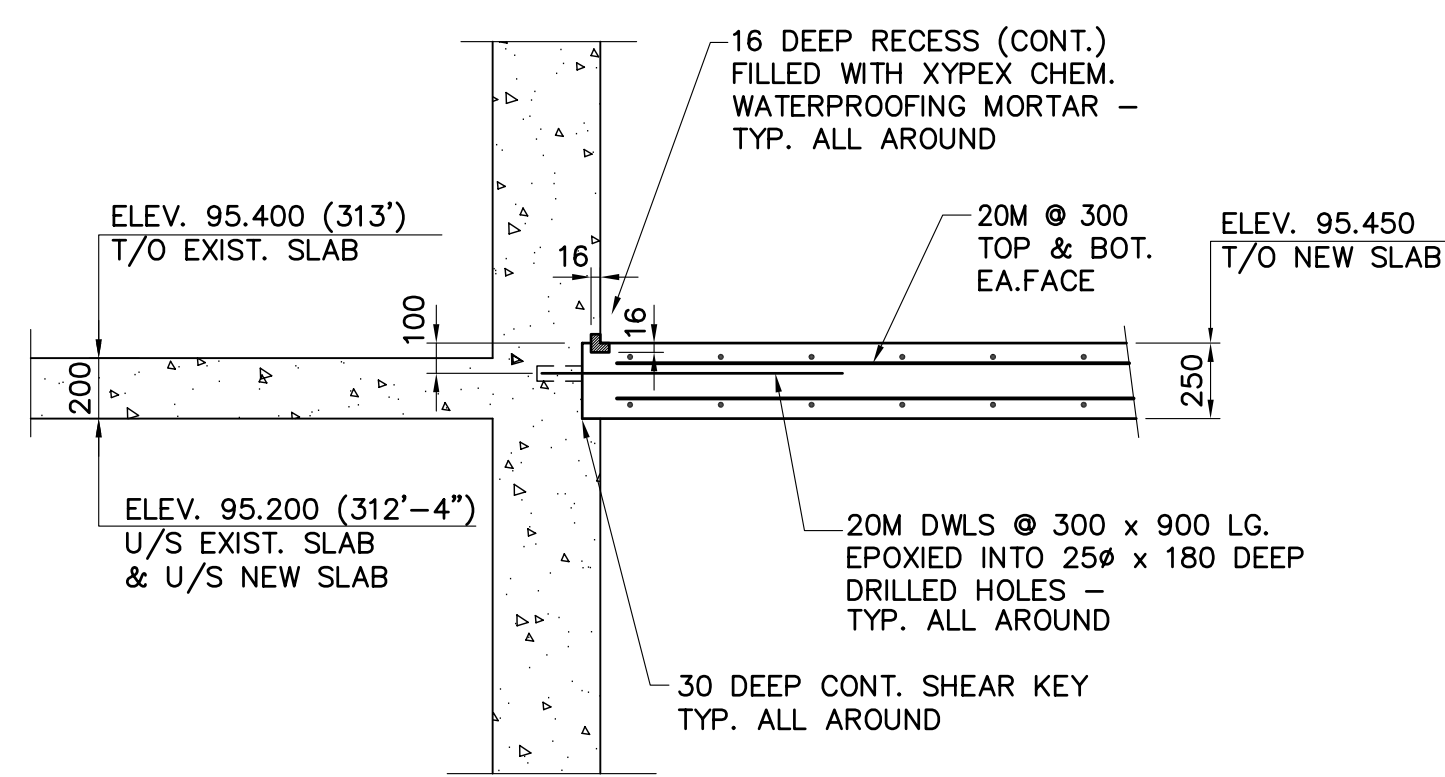
1 DETAIL  
S-4 SCALE 1:25



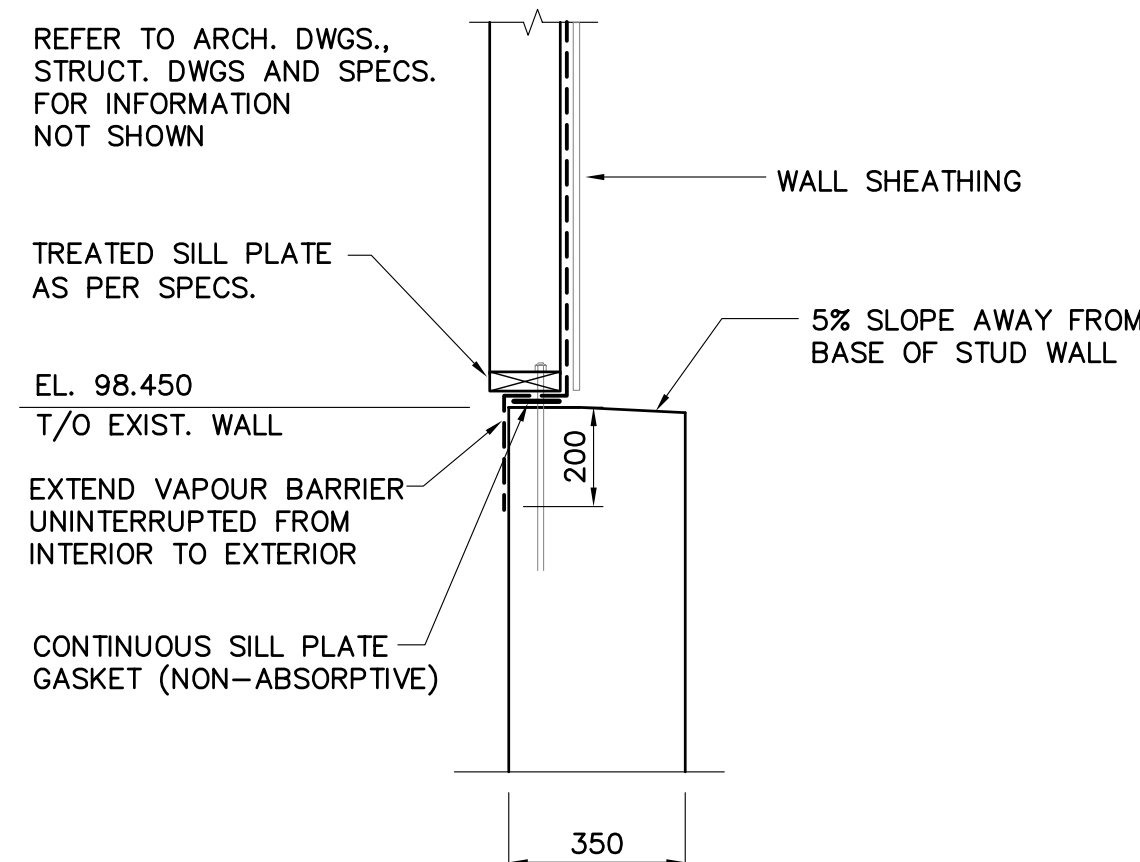
6 NEW ACCESS DETAIL  
S-5 SCALE 1:20



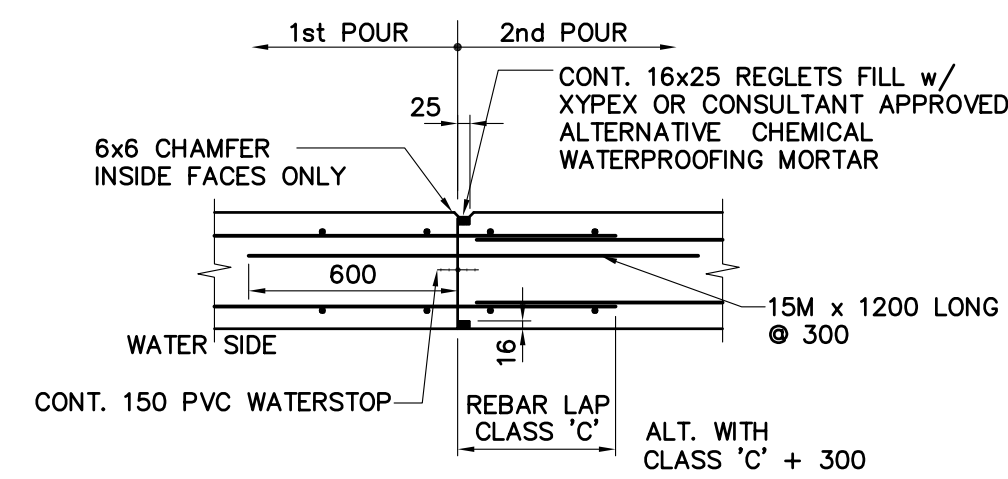
LARGE Ø PIPE THROUGH EXISTING CONCRETE WALL DETAIL



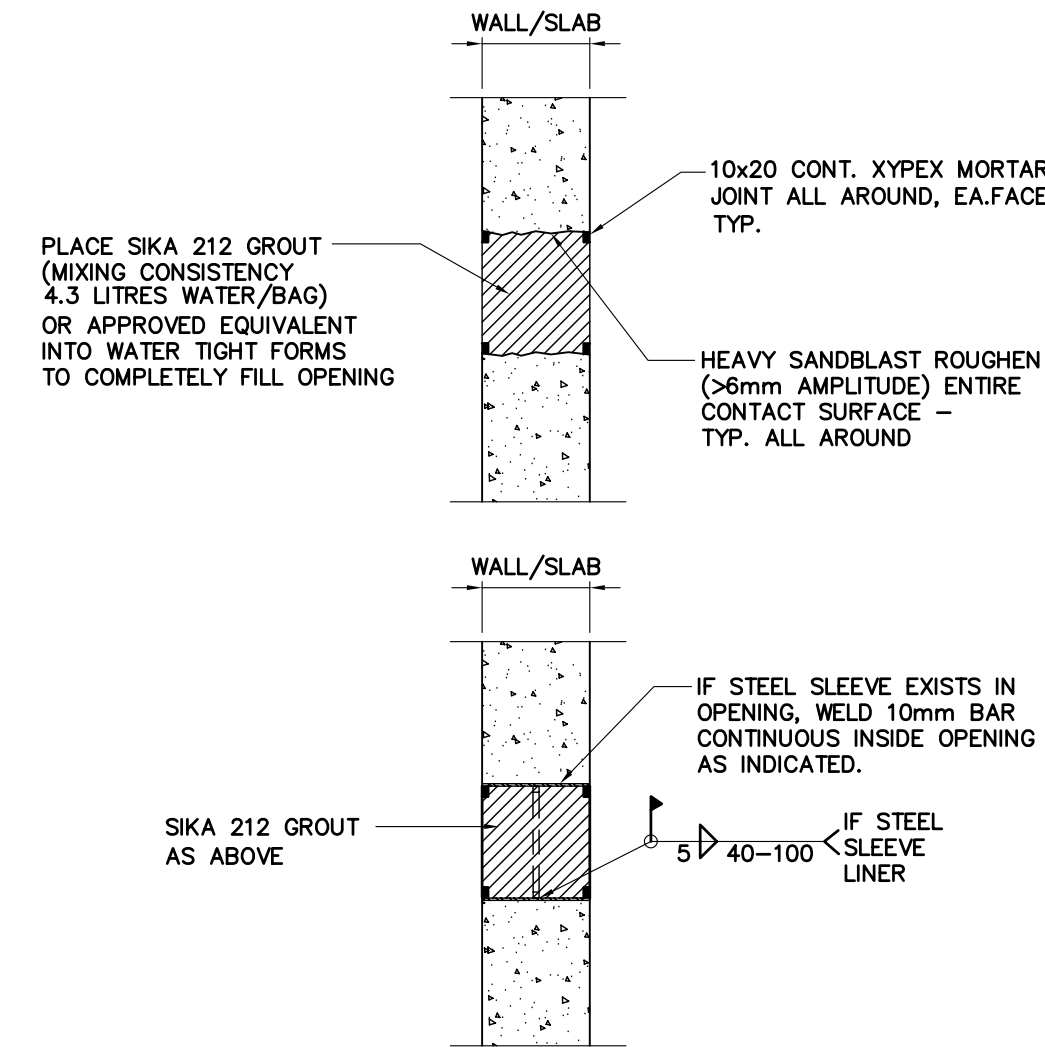
2 DETAIL  
S-8 SCALE 1:25



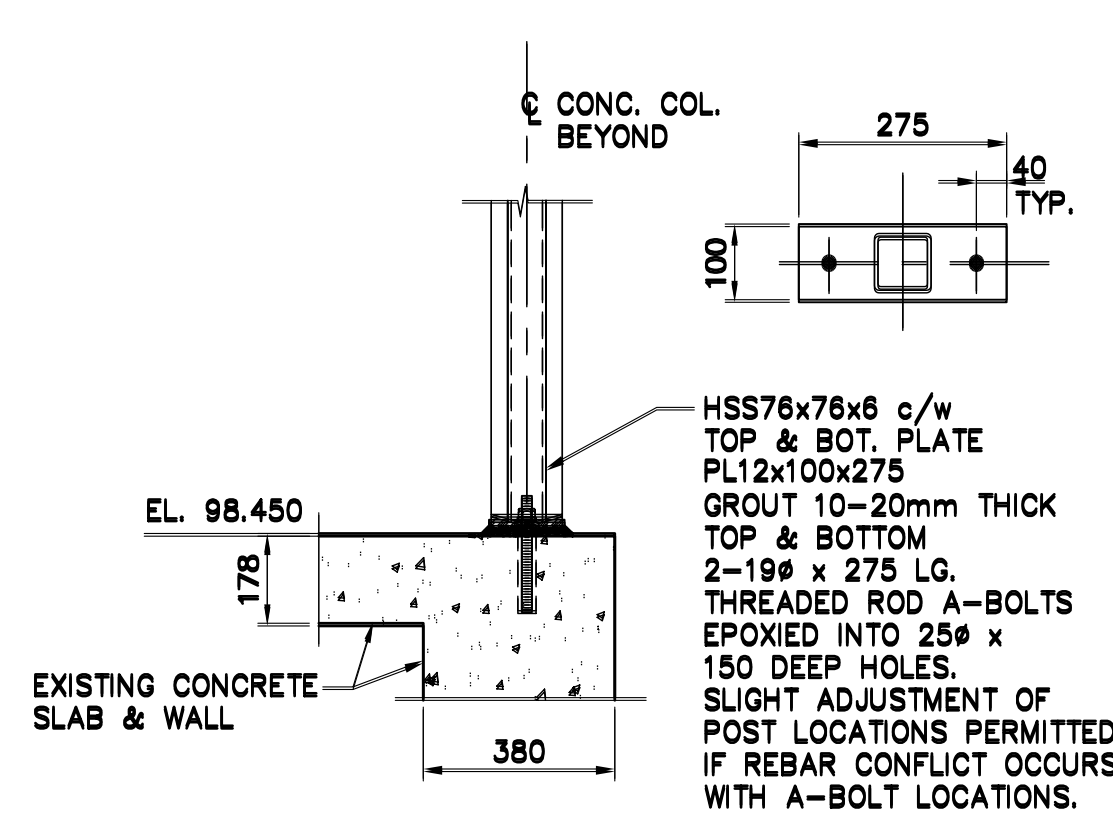
7 DETAIL  
S-6 SCALE 1:15



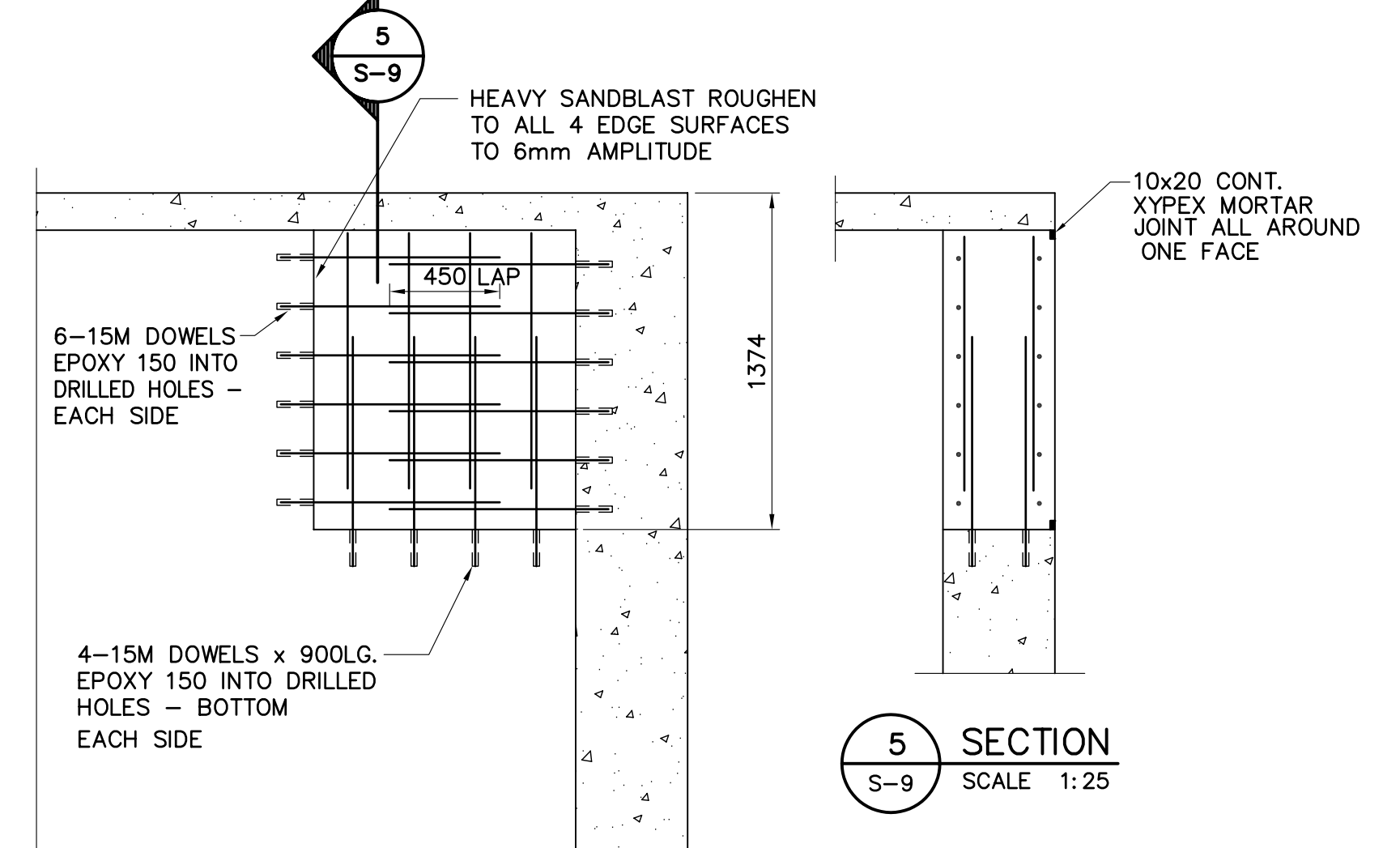
WALL CONSTR. JOINT DETAIL



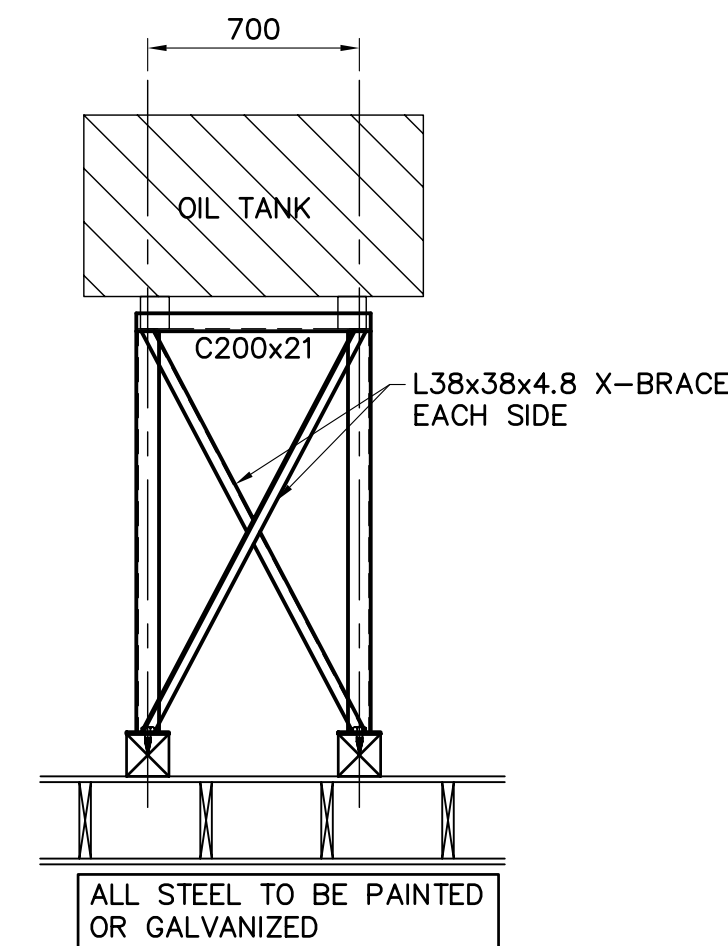
3 WALL/SLAB CLOSURE DETAIL  
S-5 SCALE 1:20 FOR HOLES <410mmØ



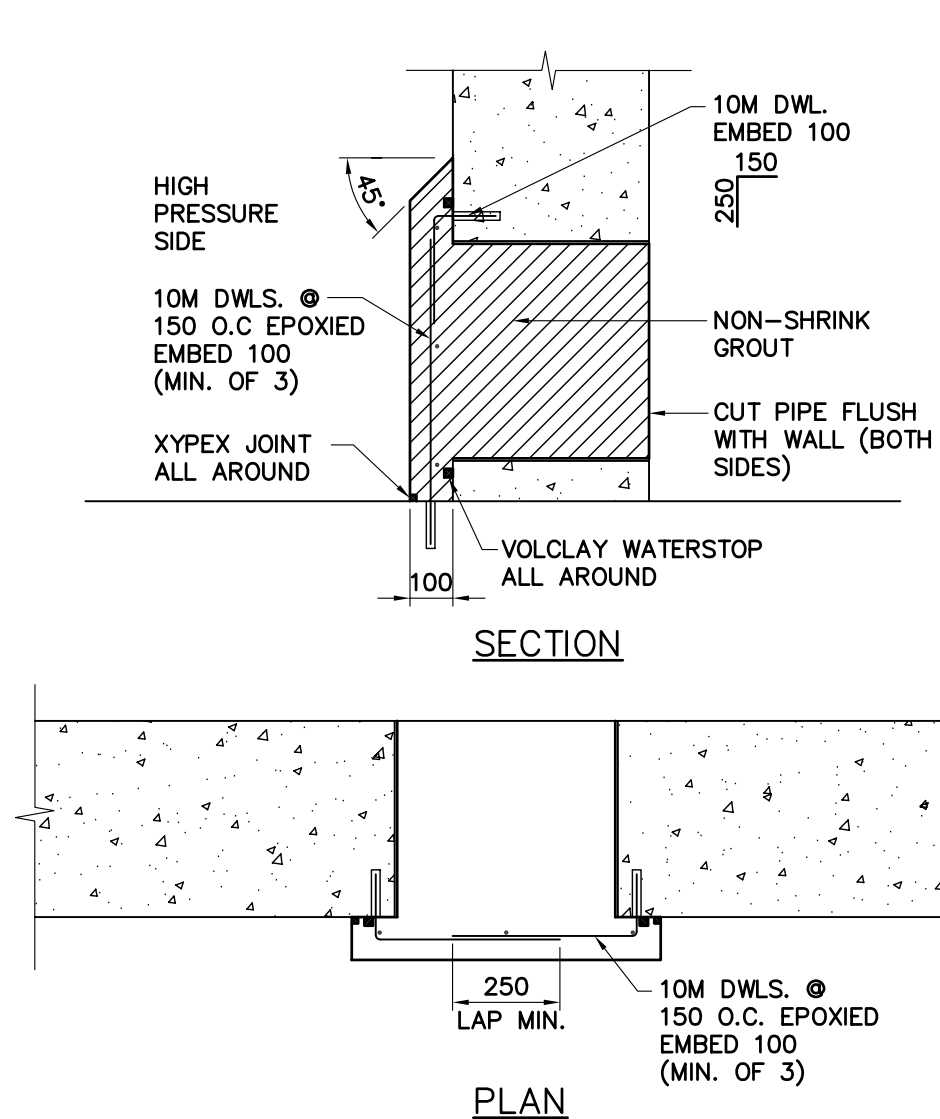
8 SECTION  
S-5 SCALE 1:15



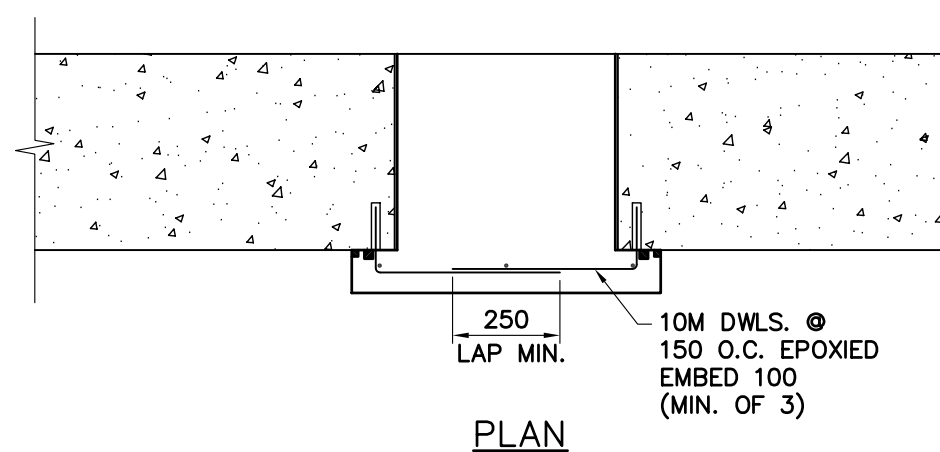
5 SECTION  
S-9 SCALE 1:25



9 SECTION  
S-5 SCALE 1:25



SECTION



PLAN

PLUG DETAIL FOR EXISTING PIPE

NOTES:

- REFERENCE : INFORMATION PRESENTED ON THIS DRAWING DESCRIBING EXISTING STRUCTURE FROM CONTRACT NO. CA-62-1-28 DRAWINGS.
- ALL EXISTING WALLS AND SLABS ARE REINFORCED CONCRETE. REINFORCEMENT NOT INDICATED.
- REFER TO DEPARTMENT OF PUBLIC WORKS CANADA - WATER TREATMENT AND WATER SUPPLY DRAWINGS FOR FROBISHER BAY N.W.T. CONTRACT NO. CA-62-1-28 FOR DETAILS DESCRIBING EXISTING STRUCTURE.

NO.	REVISION	DATE	INITIAL
2	RECORD DRAWING	23/04/04	
1	ISSUED FOR CONSTRUCTION	22/04/03	

Company Permit	Engineer Seal
<b>RECORD DRAWING</b> INFORMATION CONTAINED IN THESE DRAWINGS IS AS SUPPLIED BY: NINETY NORTH CONSTRUCTION & DEVELOPMENT LTD. THE COMPLETENESS AND ACCURACY OF THIS RECORD DRAWING IS NOT GUARANTEED. INFORMATION SHOULD BE VERIFIED AT THE ACTUAL LOCATION BEFORE USE.	

STRUCTURAL
SECTIONS AND DETAILS

--

CITY OF IQALUIT
IQALUIT WATER TREATMENT PLANT

<b>EARTH TECH</b>			
Earth Tech (Canada) Inc.			
DRAWN BY: BL	SCALE: AS NOTED	DATE: APRIL 22, 2003	SHEET NO.
CHECKED BY: GJK	DWG NO.	REV. 1	CONTRACT 55524