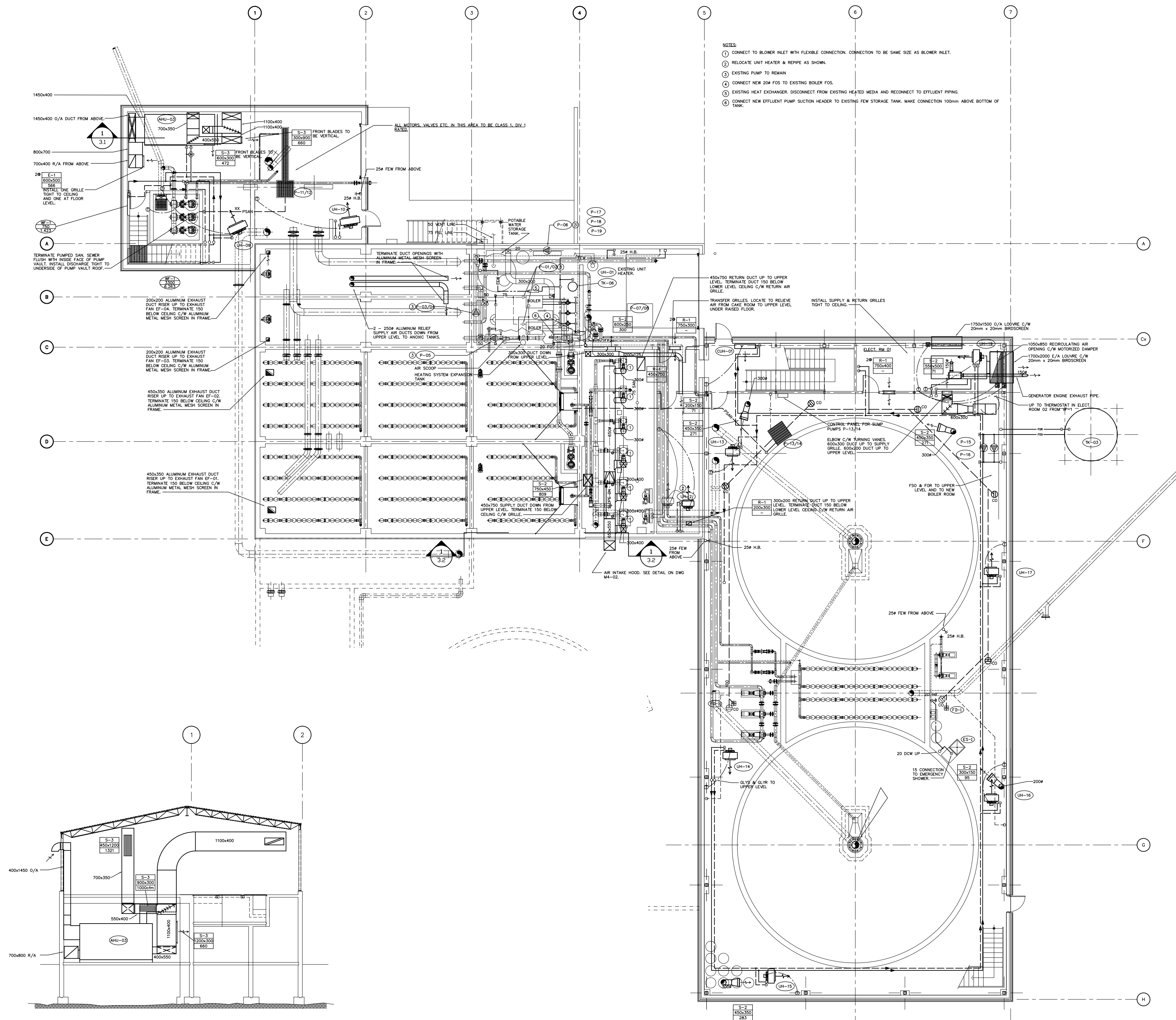




NOTES

1. CONNECT TO BLOWER INLET WITH FLEXIBLE CONNECTION. CONNECTION TO BE SAME SIZE AS BLOWER INLET.
2. RELOCATE UNIT HEATER & REPIPE AS SHOWN.
3. EXISTING PUMP TO REMAIN.
4. CONNECT NEW 204 FDS TO EXISTING BOILER FDS.
5. EXISTING HEAT EXCHANGER. DISCONNECT FROM EXISTING HEATED MEDIA AND RECONNECT TO EFFLUENT PIPING.
6. CONNECT NEW EFFLUENT PUMP SUCTION HEADER TO EXISTING FEW STORAGE TANK. MAKE CONNECTION 100mm ABOVE BOTTOM OF TANK.



1 SECTION AHU
3.1 1/75

LOWER LEVEL
SCALE: 1:75

PRELIMINARY
Not For Construction
OCT.15.2004

No.	Date	Description
B	2004 10/15	ISSUED FOR 95% REVIEW
A	2004 08/13	ISSUED FOR 50% REVIEW

REVISIONS



Design SDK
Drawn E.J.L.

Approved Chief

Director Project Title

**CITY OF IQALUIT
WASTEWATER
TREATMENT PLANT**

Drawing Title

**LOWER LEVEL
MECHANICAL**

Scale 1:75	Date
Project No. 75360	30.07.04
Drawing No. M3-01	Revision B