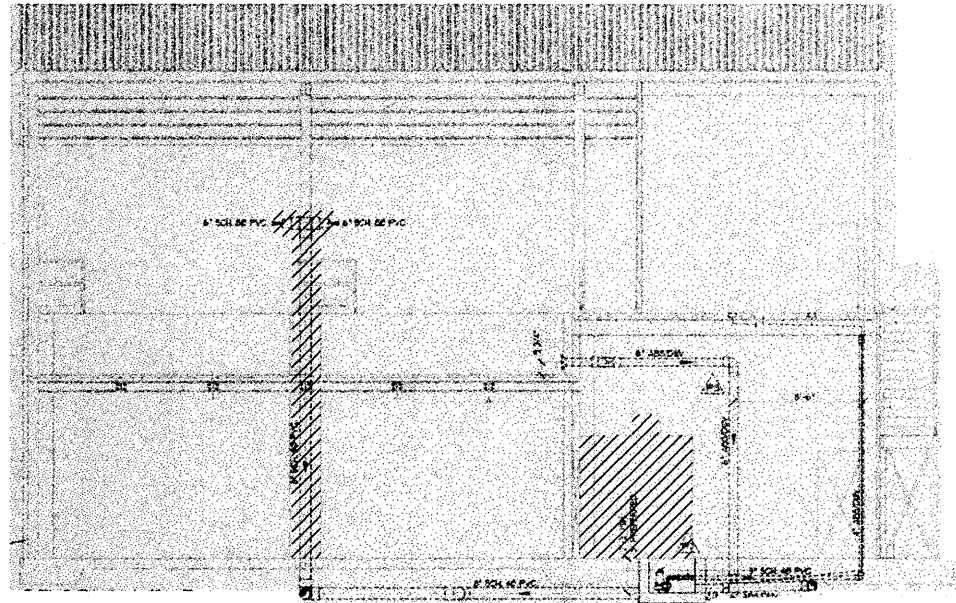
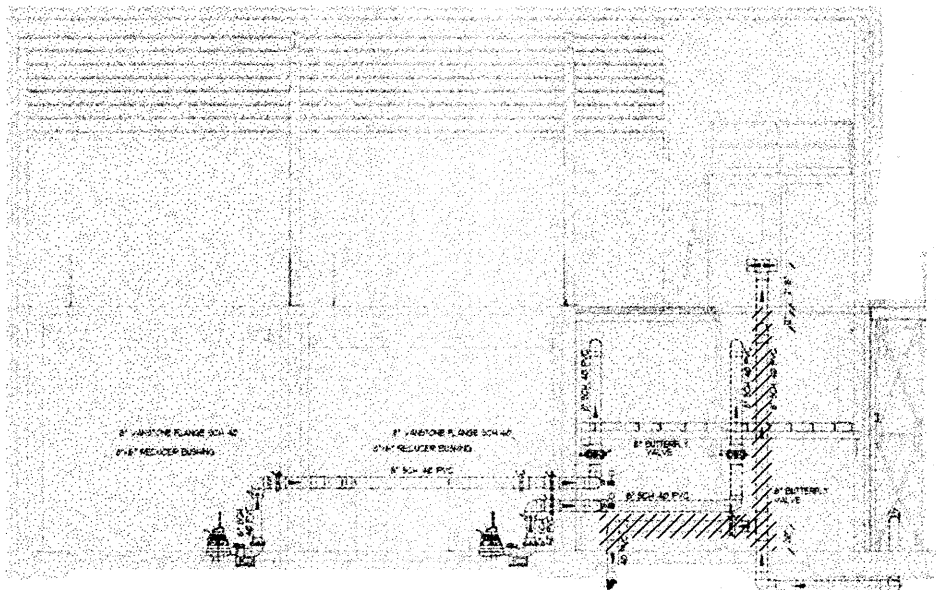
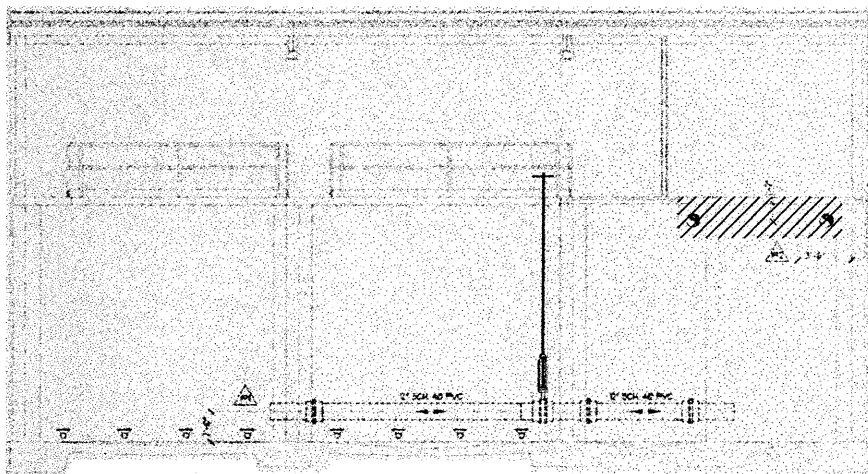
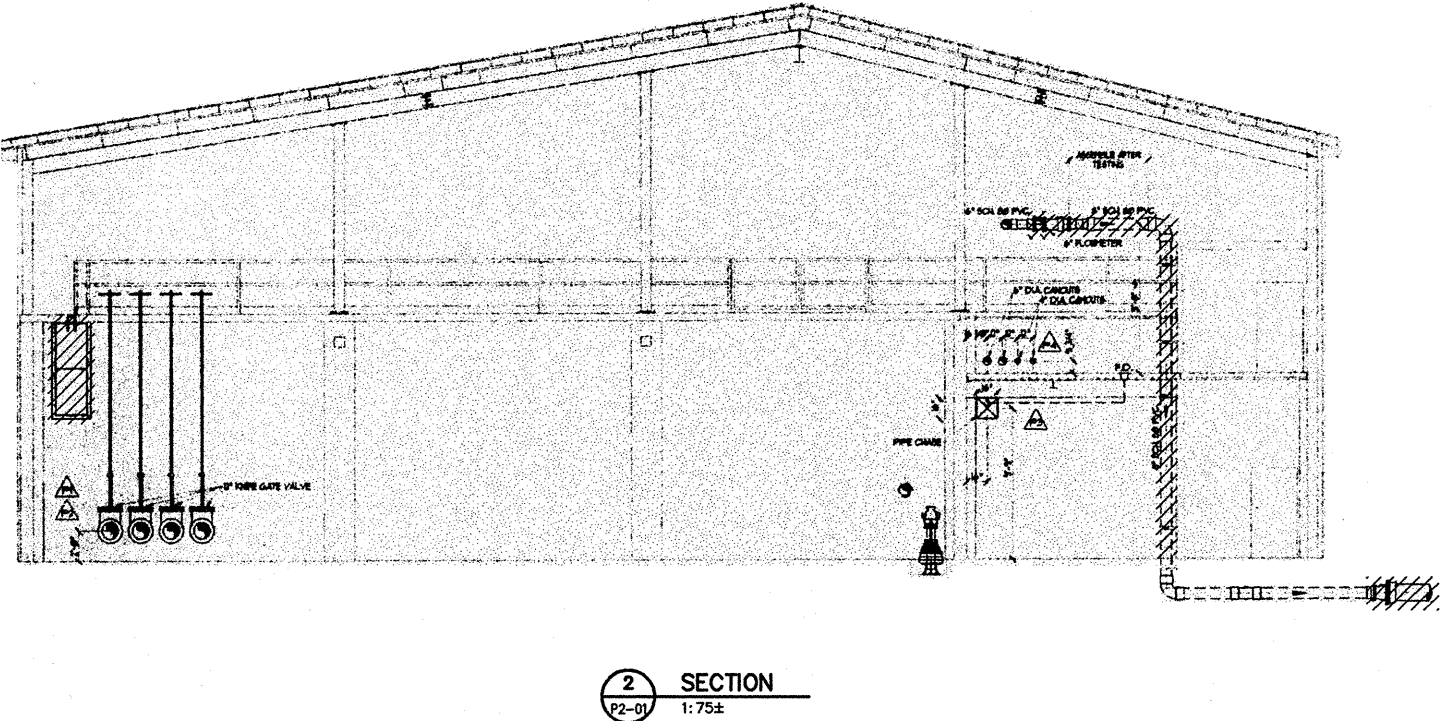
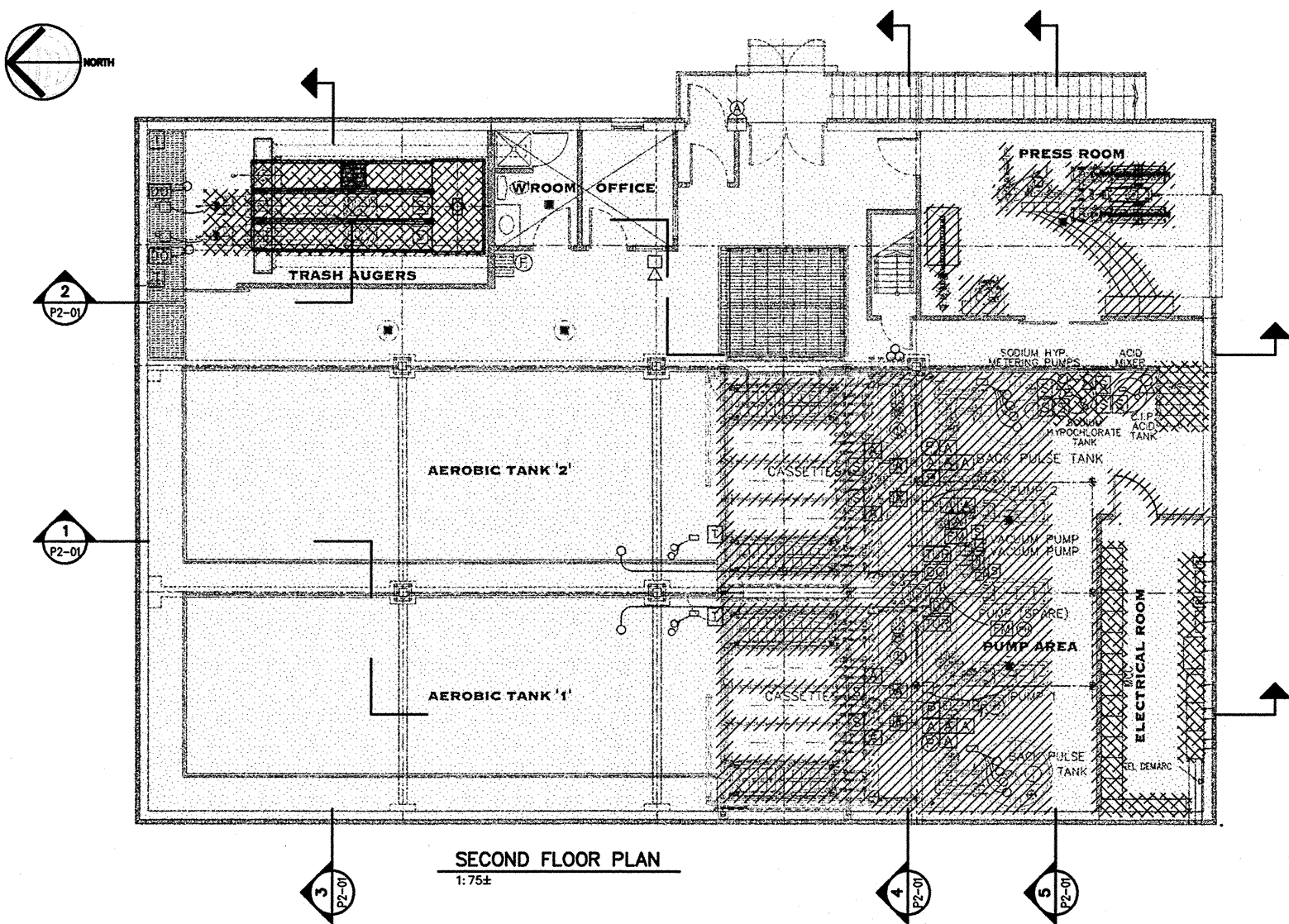
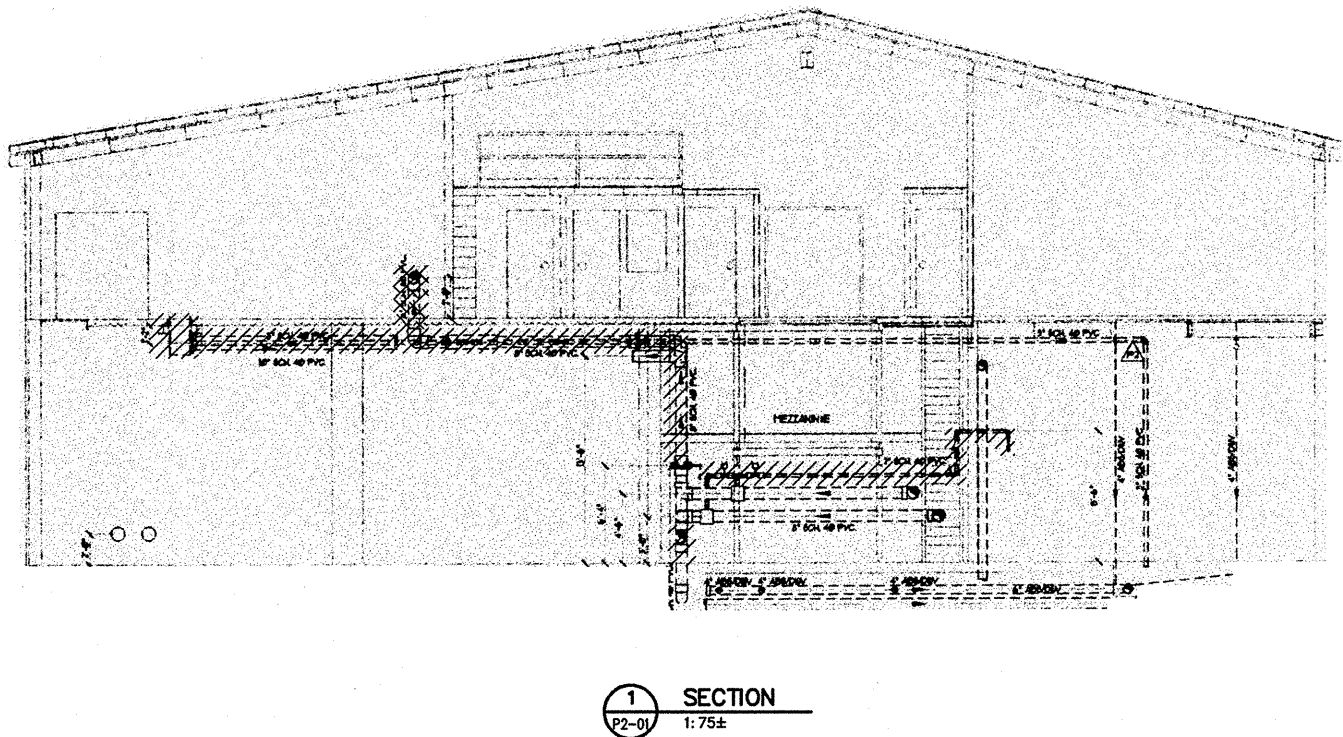
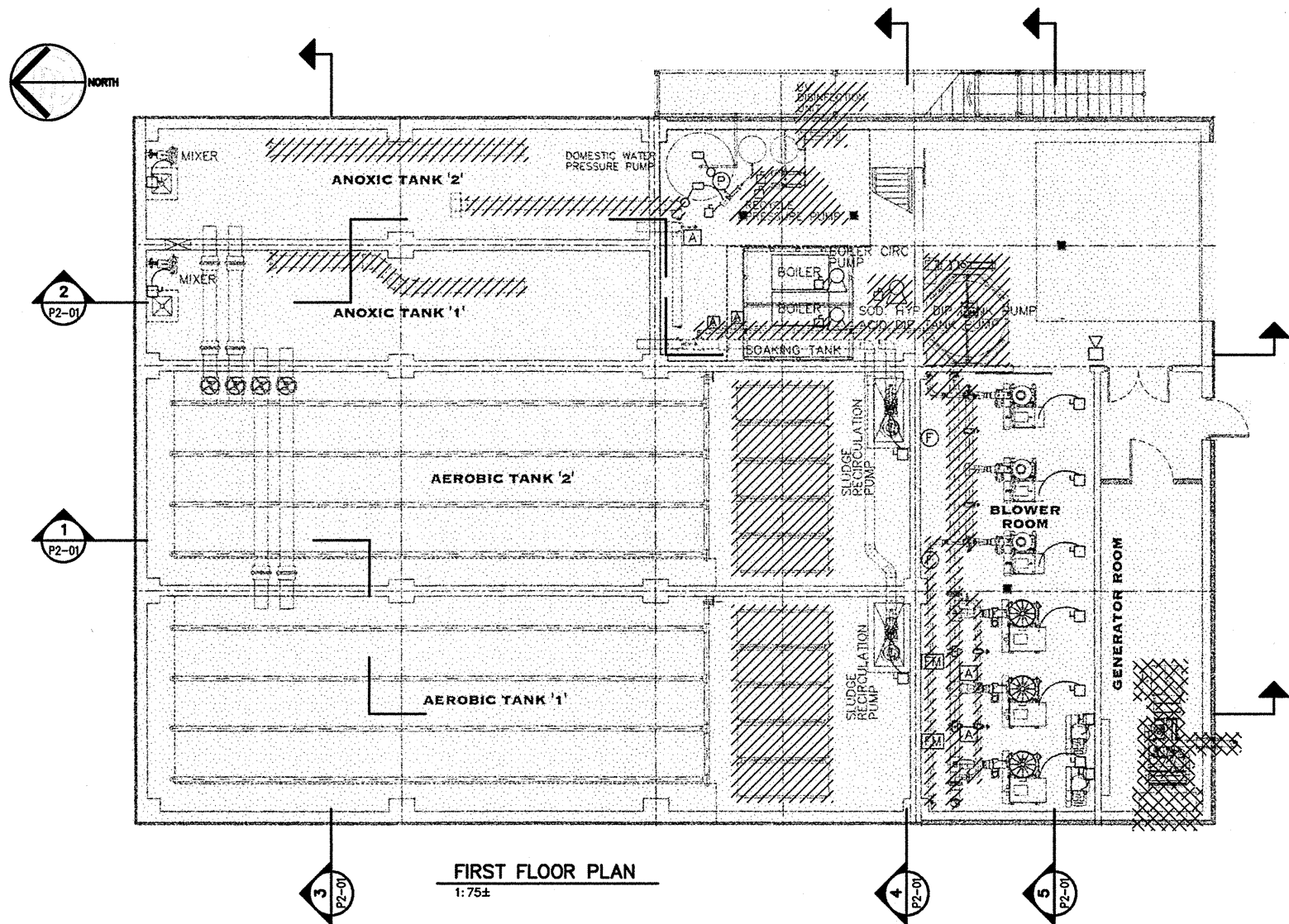


- NOTES:
1. ALL PIPE PENETRATIONS THAT ARE CUT OFF AT THE LOWER FLOOR LEVEL ARE TO BE CAPPED FLUSH WITH THE FINISHED FLOOR.
  2. EXISTING VALVES AND METERS ARE TO BE REUSED WHEN POSSIBLE.

EQUIPMENT TO BE REMOVED

EQUIPMENT TO BE RELOCATED



PRELIMINARY  
Not For Construction  
OCT.15.2004

No.	Date	Description
B	2004 10/15	ISSUED FOR 95% CLIENT REVIEW
A	2004 08/13	ISSUED FOR 50% CLIENT REVIEW

REVISIONS

Iqaluit  
CITY of IQALUIT,  
Nunavut

Design: GNS  
Drawn: DKB/SKY  
Approved: Chief

Director  
Project Title  
CITY OF IQALUIT.  
WASTEWATER  
TREATMENT PLANT

Drawing Title  
PROCESS EQUIPMENT  
DEMOLITION  
PLANS

Scale: AS NOTED  
Project No.: 75360  
Drawing No.: P2-01  
Date: 10/07/04  
Revision: B