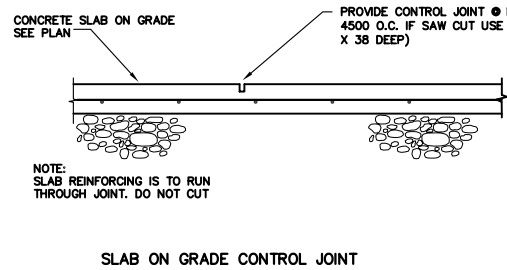


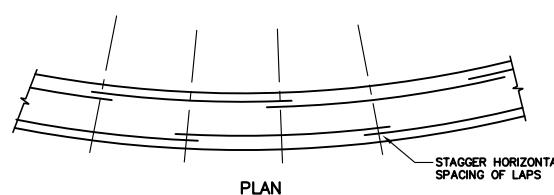
1 DETAIL
1:20

SLAB ON GRADE CONSTRUCTION JOINT

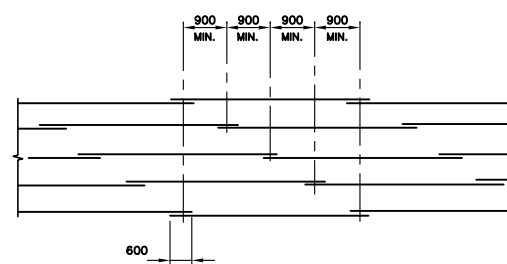


2 DETAIL
1:20

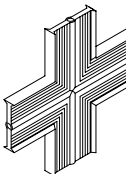
SLAB ON GRADE CONTROL JOINT



PLAN
CLARIFIER HORIZONTAL REINFORCING

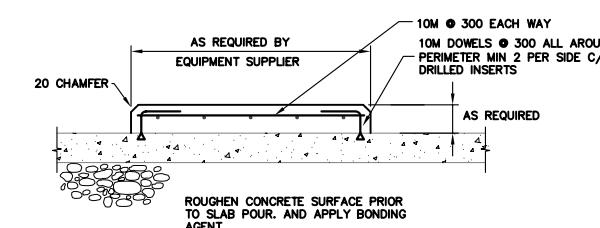


3 DETAIL
1:20



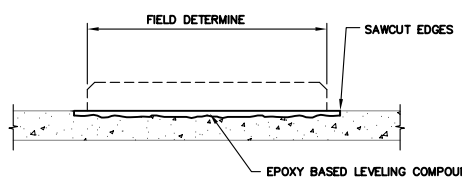
4 DETAIL
1:20

EQUIPMENT PAD ON NEW CONCRETE SLAB



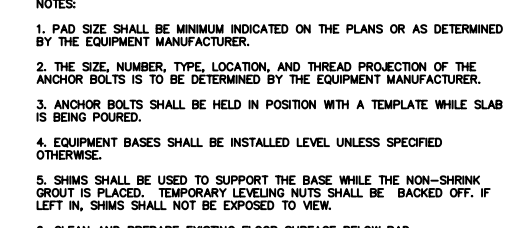
5 DETAIL
1:20

NEW EQUIPMENT PAD ON EXISTING SLAB



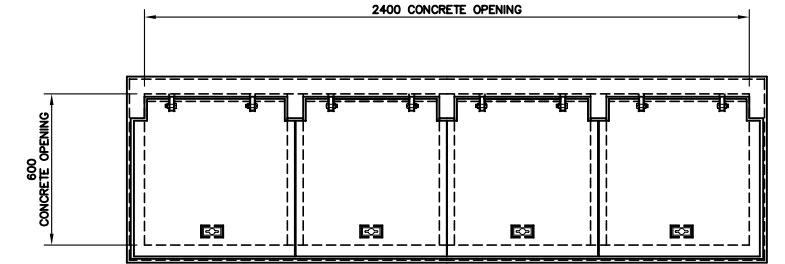
6 DETAIL
1:20

REMOVE EXISTING EQUIPMENT PAD

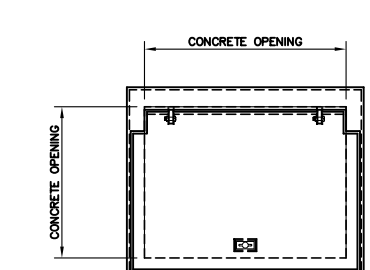


7 DETAIL
1:20

FILL-IN EXISTING FLOOR HOLES



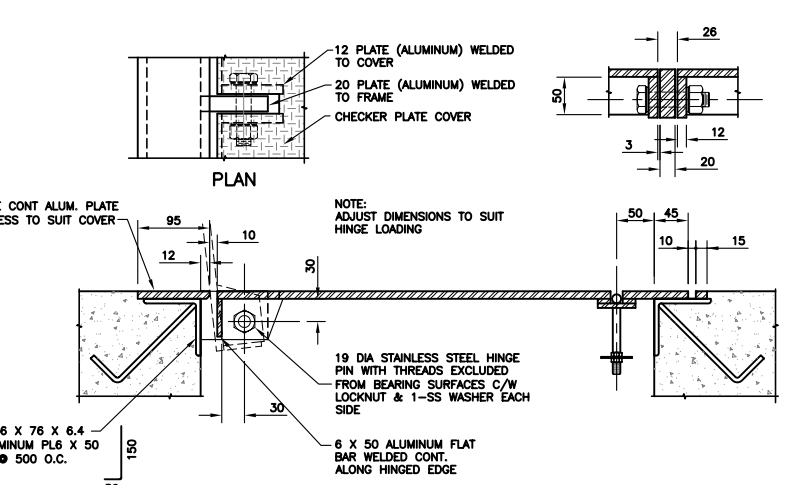
TYPICAL 4 PANEL ACCESS COVER



- NOTES:
1. PAD SIZE SHALL BE MINIMUM INDICATED ON THE PLANS OR AS DETERMINED BY THE EQUIPMENT MANUFACTURER.
 2. THE SIZE, NUMBER, TYPE, LOCATION, AND THREAD PROJECTION OF THE ANCHOR BOLTS IS TO BE DETERMINED BY THE EQUIPMENT MANUFACTURER.
 3. ANCHOR BOLTS SHALL BE HELD IN POSITION WITH A TEMPLATE WHILE SLAB IS BEING POURED.
 4. EQUIPMENT BASES SHALL BE INSTALLED LEVEL, UNLESS SPECIFIED OTHERWISE.
 5. SHIMS SHALL BE USED TO SUPPORT THE BASE WHILE THE NON-SHRINK GROUT IS PLACED. TEMPORARY LEVELING NUTS SHALL BE "BACKED OFF" IF LEFT IN. SHIMS SHALL NOT BE EXPOSED TO VIEW.
 6. CLEAN AND PREPARE EXISTING FLOOR SURFACE BELOW PAD.

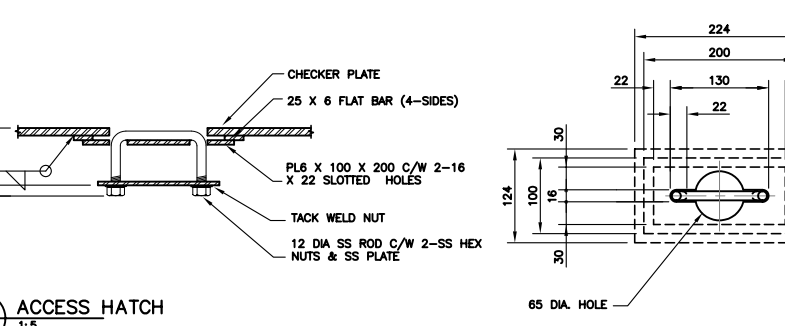
8 DETAIL
1:20

DETAIL DOES NOT APPLY TO SLUMP PUMP COVERS. SEE MECHANICAL STANDARDS.



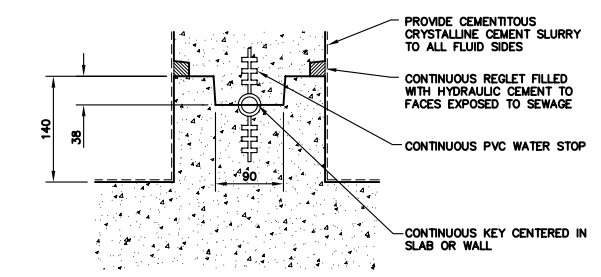
9 DETAIL
1:5

ACCESS HATCH



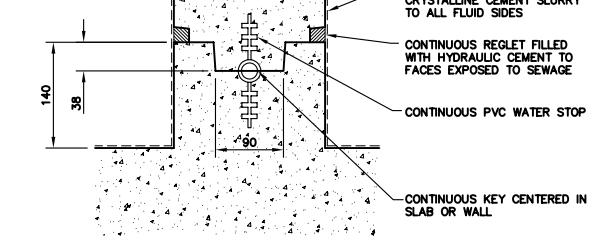
10 DETAIL
1:5

BASE OF CLARIFIER



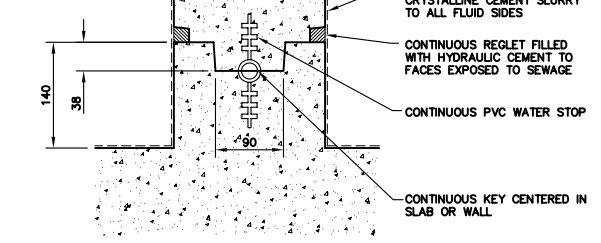
11 DETAIL
1:5

STOP LOG GATE BOTTOM



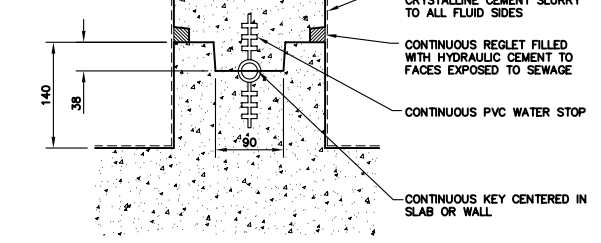
12 DETAIL
1:5

STOP LOG GATE SIDE PLAN



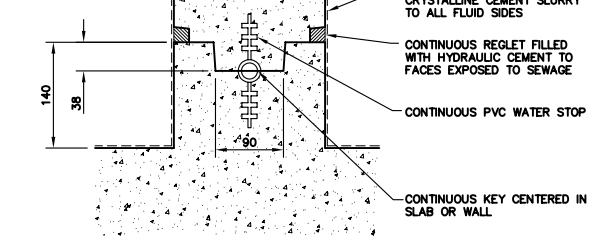
13 DETAIL
1:20

TYPICAL SLAB PILE-CAP



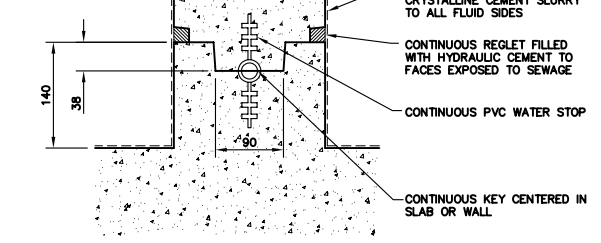
14 DETAIL
1:20

TYPICAL PEDESTAL



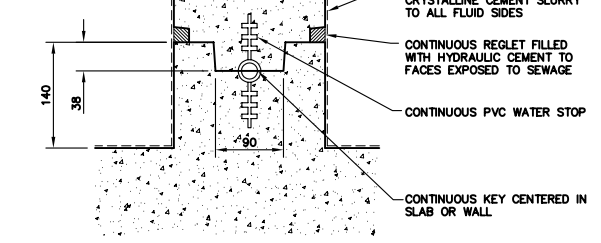
15 DETAIL
1:20

PILE AT CLARIFIER WALL



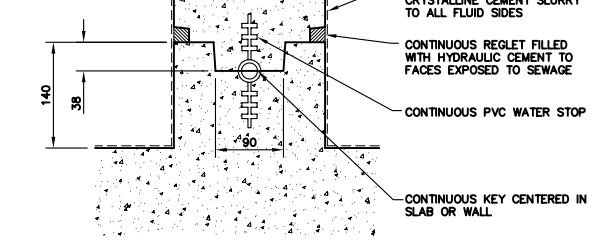
16 DETAIL
1:20

PILE AT CLARIFIER SLAB



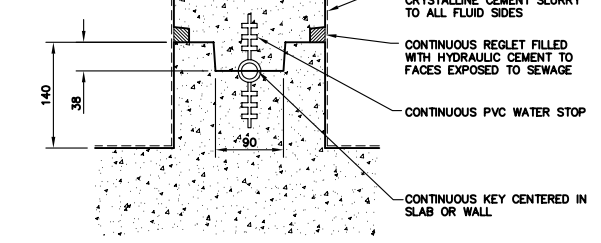
17 DETAIL
1:20

TYPICAL ROCK SOCKET PILE



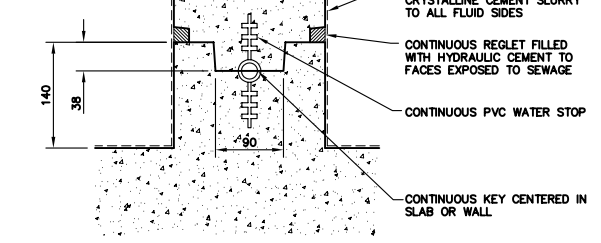
18 DETAIL
1:20

OPTIONAL PAD & FOOTING FOUNDATION



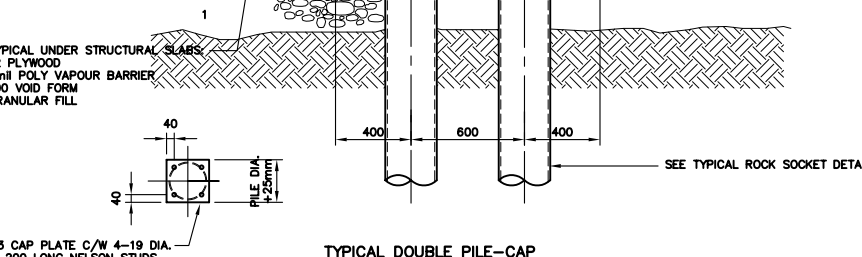
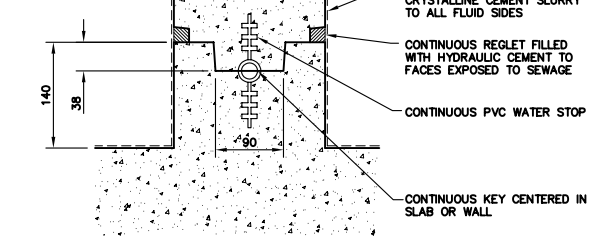
19 DETAIL
1:20

TYPICAL DOUBLE PILE-CAP



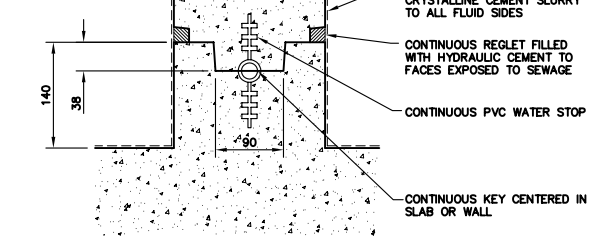
20 DETAIL
1:20

TYPICAL TRANSFORMER PAD



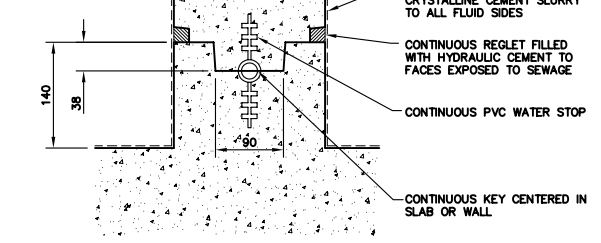
22 DETAIL
1:20

TYPICAL UNDER STRUCTURAL SLAB



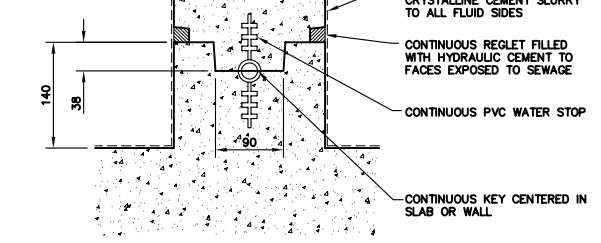
23 DETAIL
1:25

SLUMP BOX ISOMETRIC



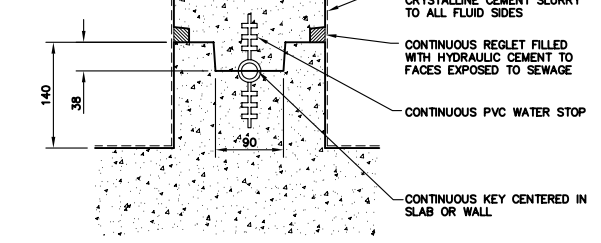
24 DETAIL
1:20

SEE TYPICAL ROCK SOCKET DETAIL



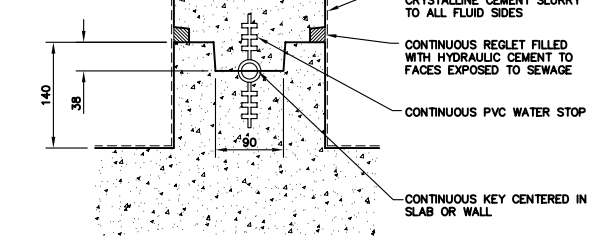
25 DETAIL
1:20

SEE TYPICAL ROCK SOCKET DETAIL



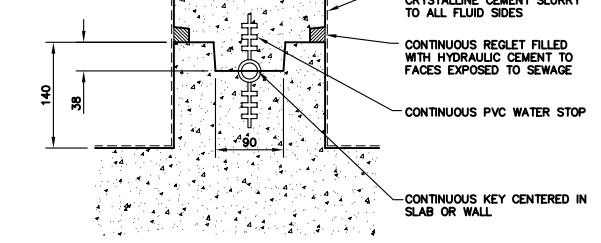
26 DETAIL
1:20

SEE TYPICAL ROCK SOCKET DETAIL



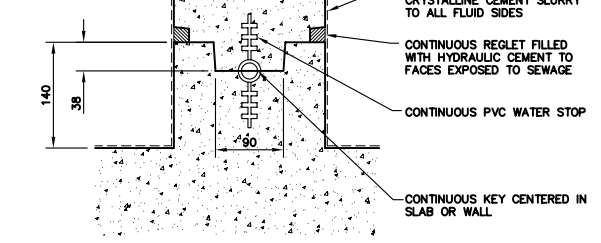
27 DETAIL
1:20

SEE TYPICAL ROCK SOCKET DETAIL



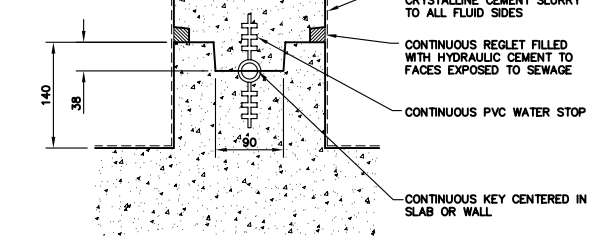
28 DETAIL
1:20

SEE TYPICAL ROCK SOCKET DETAIL



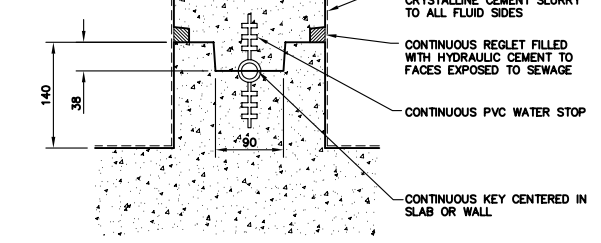
29 DETAIL
1:20

SEE TYPICAL ROCK SOCKET DETAIL



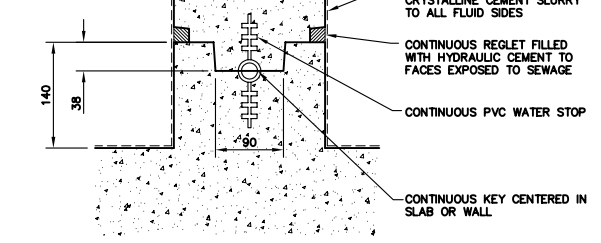
30 DETAIL
1:20

SEE TYPICAL ROCK SOCKET DETAIL



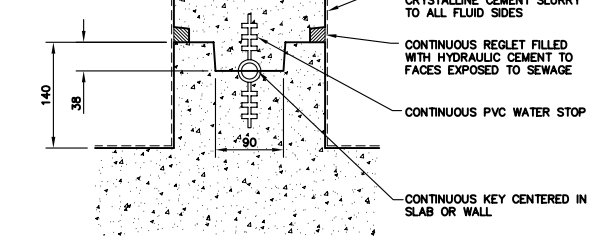
31 DETAIL
1:20

SEE TYPICAL ROCK SOCKET DETAIL



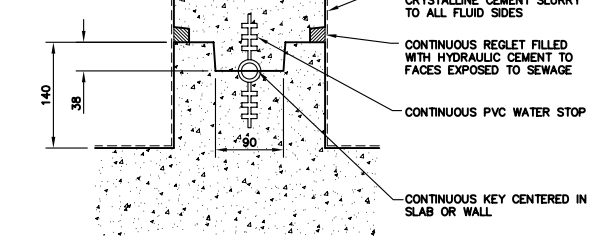
32 DETAIL
1:20

SEE TYPICAL ROCK SOCKET DETAIL



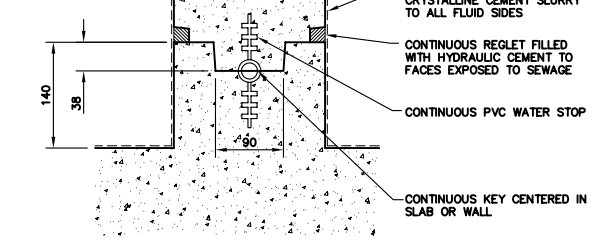
33 DETAIL
1:20

SEE TYPICAL ROCK SOCKET DETAIL



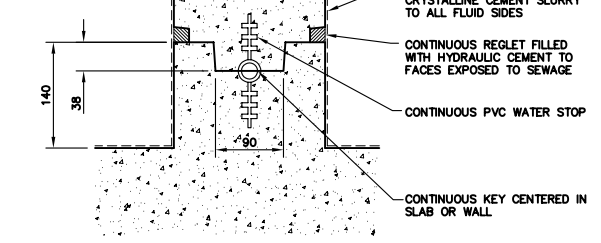
34 DETAIL
1:20

SEE TYPICAL ROCK SOCKET DETAIL



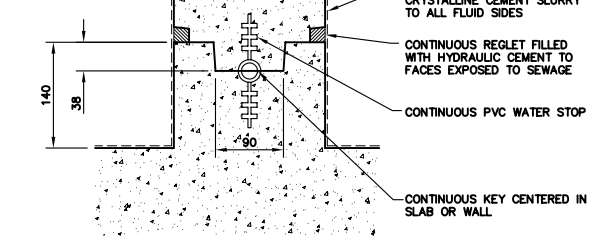
35 DETAIL
1:20

SEE TYPICAL ROCK SOCKET DETAIL



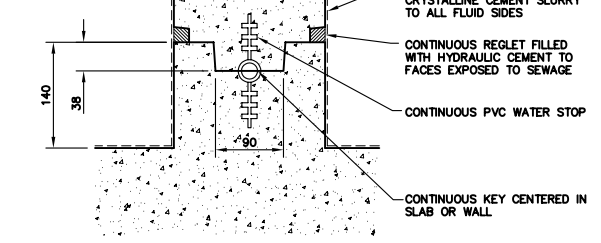
36 DETAIL
1:20

SEE TYPICAL ROCK SOCKET DETAIL



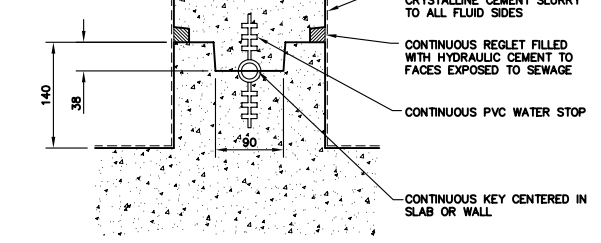
37 DETAIL
1:20

SEE TYPICAL ROCK SOCKET DETAIL



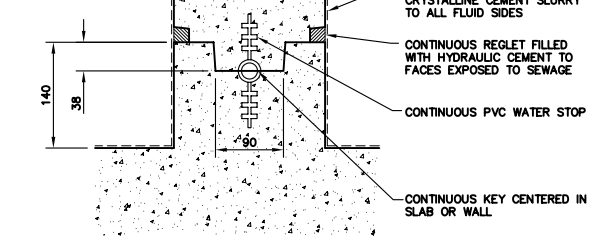
38 DETAIL
1:20

SEE TYPICAL ROCK SOCKET DETAIL



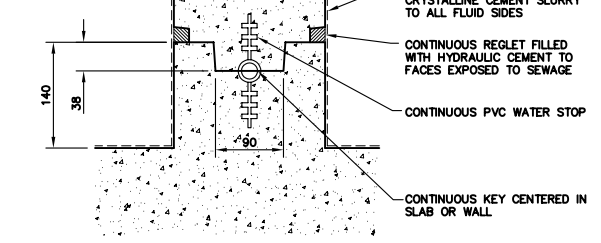
39 DETAIL
1:20

SEE TYPICAL ROCK SOCKET DETAIL



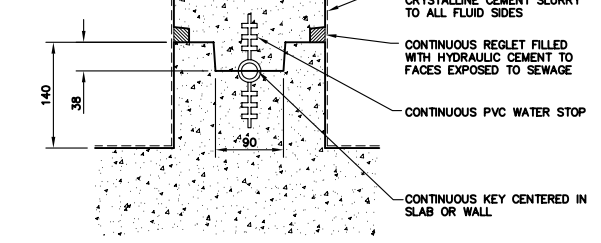
40 DETAIL
1:20

SEE TYPICAL ROCK SOCKET DETAIL



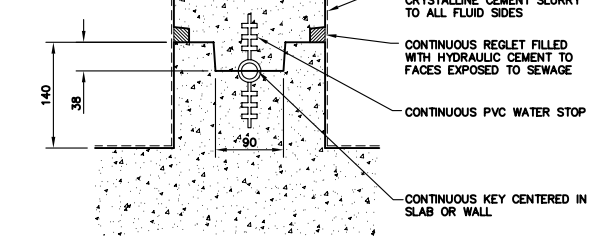
41 DETAIL
1:20

SEE TYPICAL ROCK SOCKET DETAIL



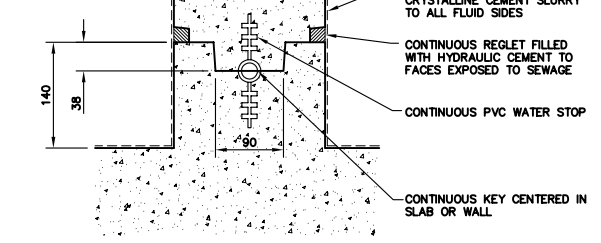
42 DETAIL
1:20

SEE TYPICAL ROCK SOCKET DETAIL



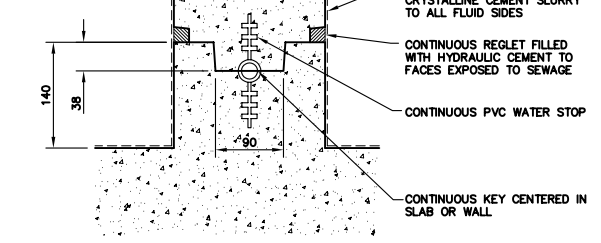
43 DETAIL
1:20

SEE TYPICAL ROCK SOCKET DETAIL



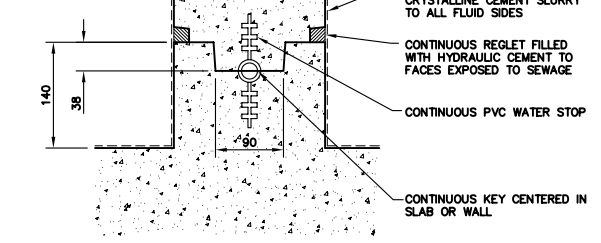
44 DETAIL
1:20

SEE TYPICAL ROCK SOCKET DETAIL



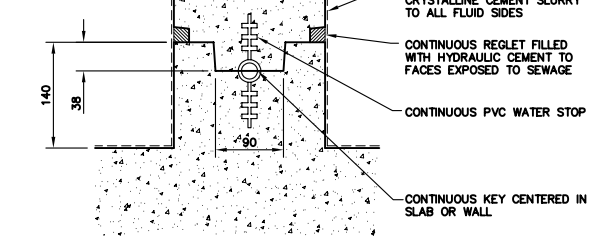
45 DETAIL
1:20

SEE TYPICAL ROCK SOCKET DETAIL



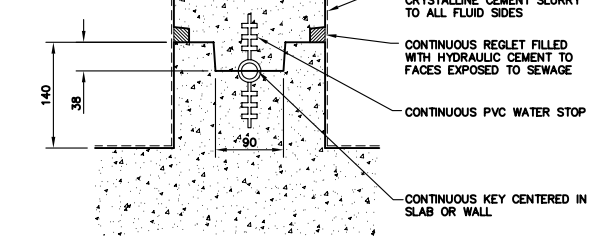
46 DETAIL
1:20

SEE TYPICAL ROCK SOCKET DETAIL



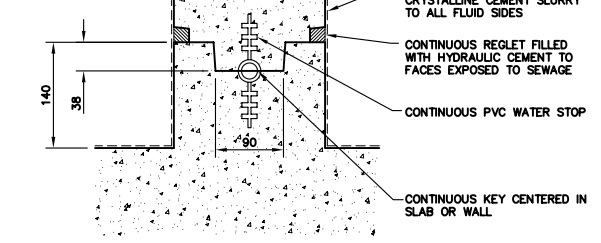
47 DETAIL
1:20

SEE TYPICAL ROCK SOCKET DETAIL



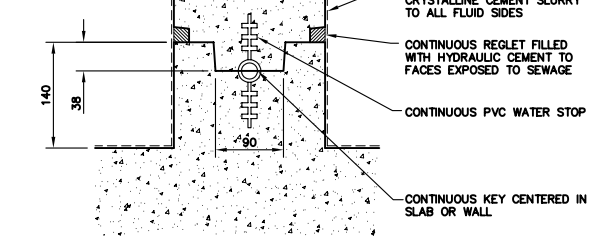
48 DETAIL
1:20

SEE TYPICAL ROCK SOCKET DETAIL



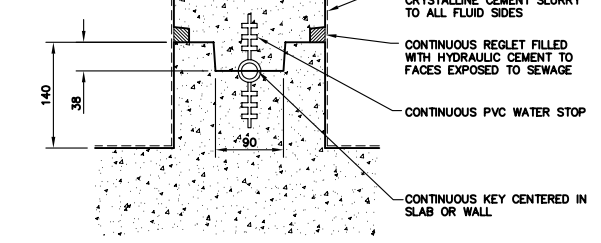
49 DETAIL
1:20

SEE TYPICAL ROCK SOCKET DETAIL



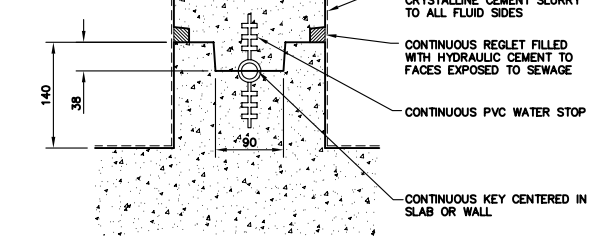
50 DETAIL
1:20

SEE TYPICAL ROCK SOCKET DETAIL



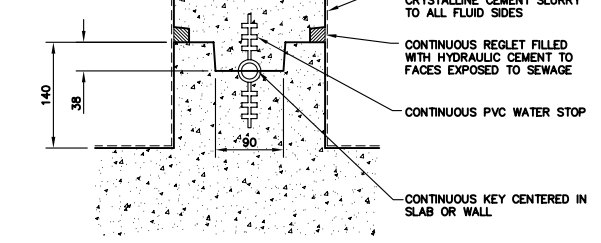
51 DETAIL
1:20

SEE TYPICAL ROCK SOCKET DETAIL



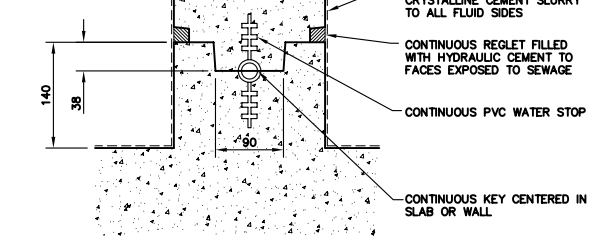
52 DETAIL
1:20

SEE TYPICAL ROCK SOCKET DETAIL



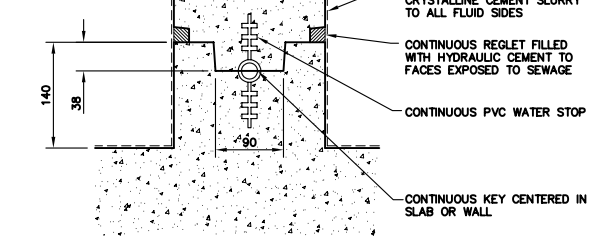
53 DETAIL
1:20

SEE TYPICAL ROCK SOCKET DETAIL



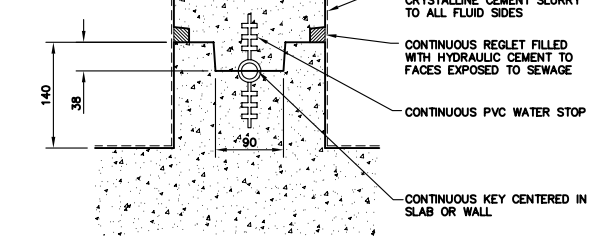
54 DETAIL
1:20

SEE TYPICAL ROCK SOCKET DETAIL



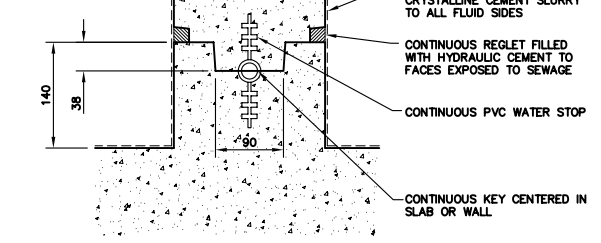
55 DETAIL
1:20

SEE TYPICAL ROCK SOCKET DETAIL



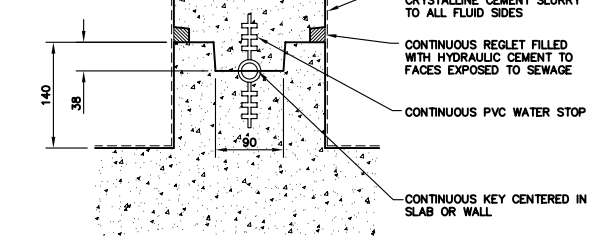
56 DETAIL
1:20

SEE TYPICAL ROCK SOCKET DETAIL



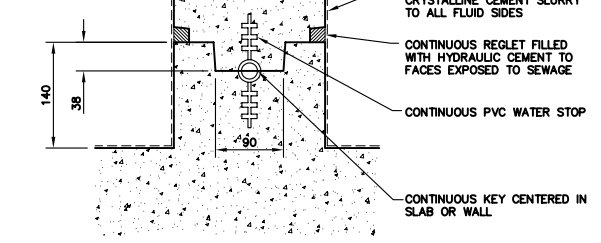
57 DETAIL
1:20

SEE TYPICAL ROCK SOCKET DETAIL



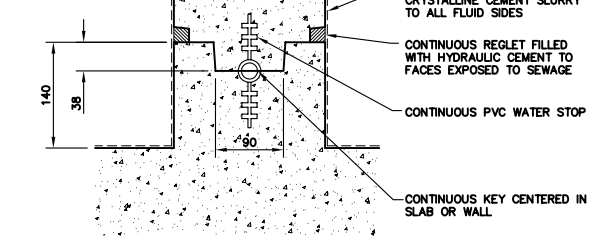
58 DETAIL
1:20

SEE TYPICAL ROCK SOCKET DETAIL



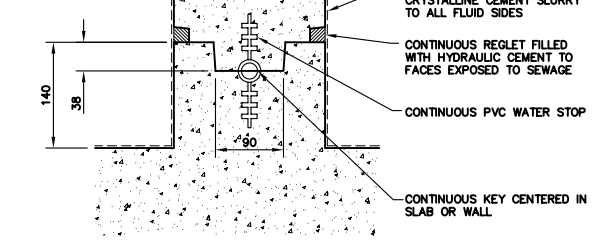
59 DETAIL
1:20

SEE TYPICAL ROCK SOCKET DETAIL



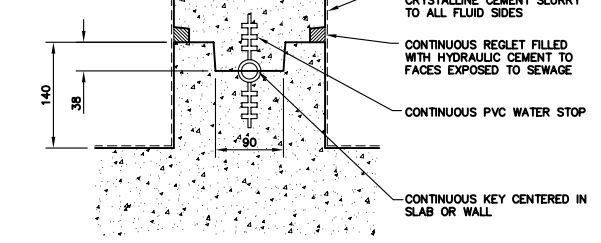
60 DETAIL
1:20

SEE TYPICAL ROCK SOCKET DETAIL



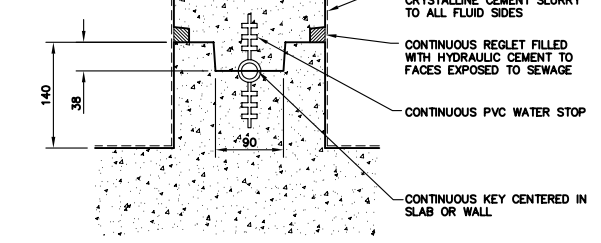
61 DETAIL
1:20

SEE TYPICAL ROCK SOCKET DETAIL



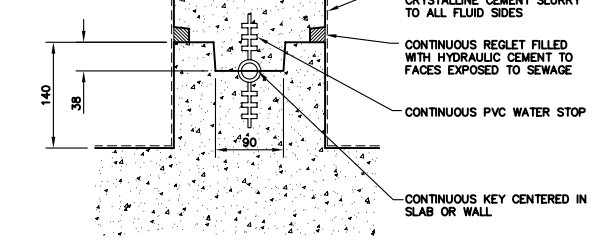
62 DETAIL
1:20

SEE TYPICAL ROCK SOCKET DETAIL



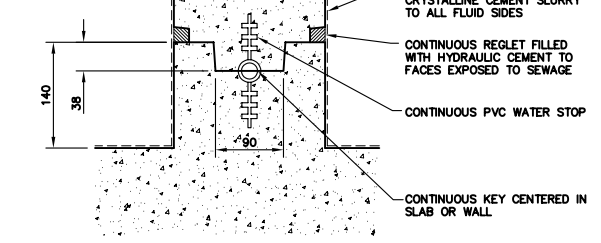
63 DETAIL
1:20

SEE TYPICAL ROCK SOCKET DETAIL



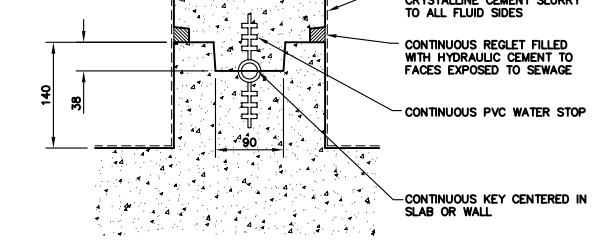
64 DETAIL
1:20

SEE TYPICAL ROCK SOCKET DETAIL



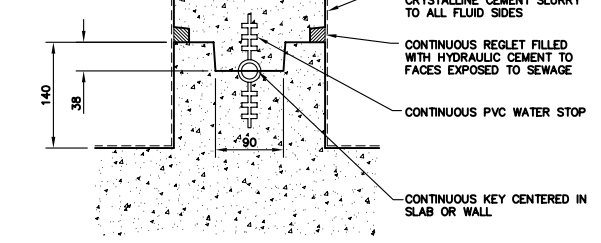
65 DETAIL
1:20

SEE TYPICAL ROCK SOCKET DETAIL



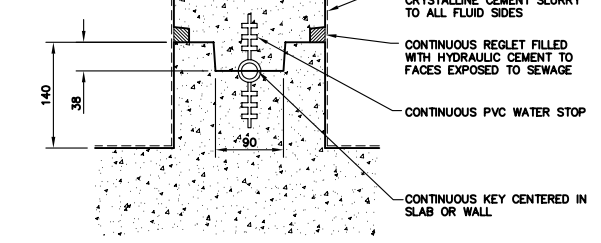
66 DETAIL
1:20

SEE TYPICAL ROCK SOCKET DETAIL



67 DETAIL
1:20

SEE TYPICAL ROCK SOCKET DETAIL



68 DETAIL
1:20

SEE TYPICAL ROCK SOCKET DETAIL

