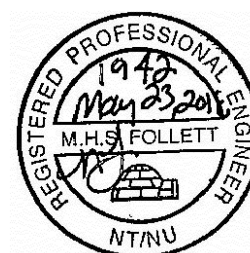
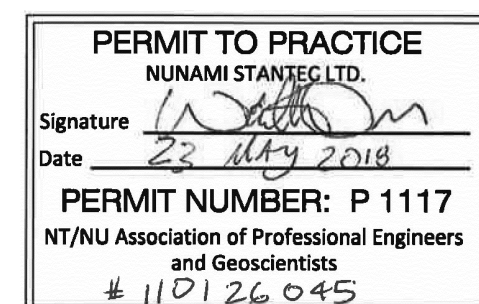
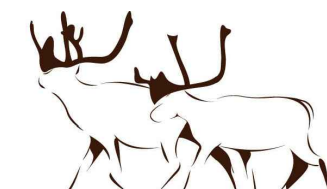
[illegible]

Permit-Seal



NUNAMI
STANTEC LIMITED



The Contractor shall verify and be responsible for all dimensions. DO NOT scale the drawing - any errors or omissions shall be reported to Stantec without delay.
The Copyrights to all designs and drawings are the property of Stantec. Reproduction or use for any purpose other than that authorized by Stantec is forbidden.

File Name: C201.dwg

BWB/IGM	KLB	MF	18.03.09
Dwn.	Chkd.	Dsgn.	YY.MM.DD

Drawing No.

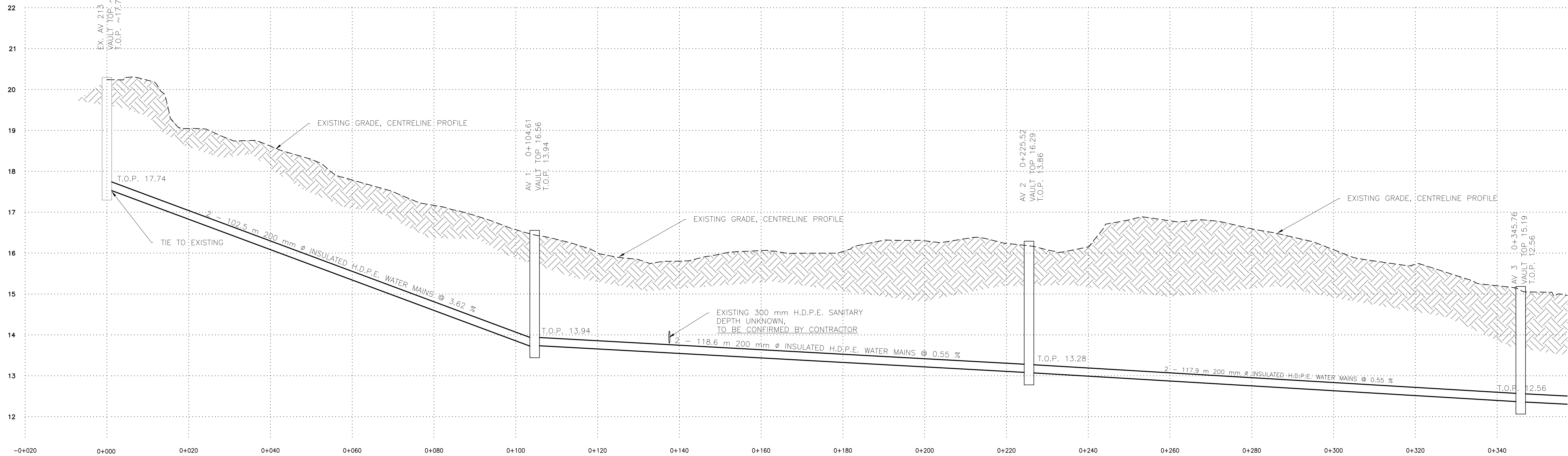
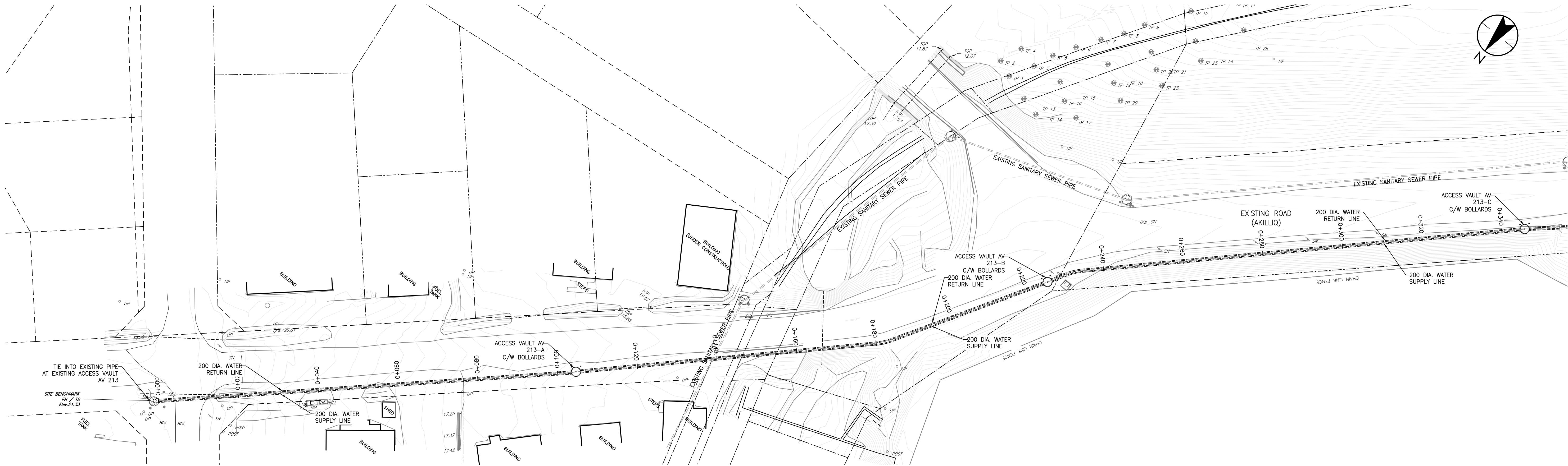
C201

Sheet _____ Revision _____

1 of 10 0

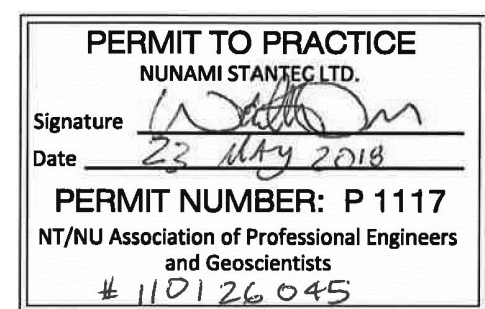
ORIGINAL SHEET - ISO A1

U:\110126045\drawings\drawings\01-civil\current\C210-211.dwg
2018/05/29 7:50 AM By: Bachrachner, Benjie



Consultants

Permit-Seal



1088C Noble House
Iqaluit NU
www.stantec.com

The Contractor shall verify and be responsible for all dimensions. DO NOT scale the drawing - any errors or omissions shall be reported to Stantec without delay.
The Copyrights to all designs and drawings are the property of Stantec. Reproduction or use for any purpose other than that authorized by Stantec is forbidden.

Client/Project
Iqaluit
WWT
IQUALUIT WASTEWATER TREATMENT PLANT
UPGRADE
City of Iqaluit, Nunavut

File Name: C210-211.dwg

BWB/IGM	WO	MF	18.02.28
Dwn.	Chkd.	Dsgn.	YY.MM.DD

Title
CIVIL
PLAN / PROFILE
STA. 0+000 - STA. 0+340

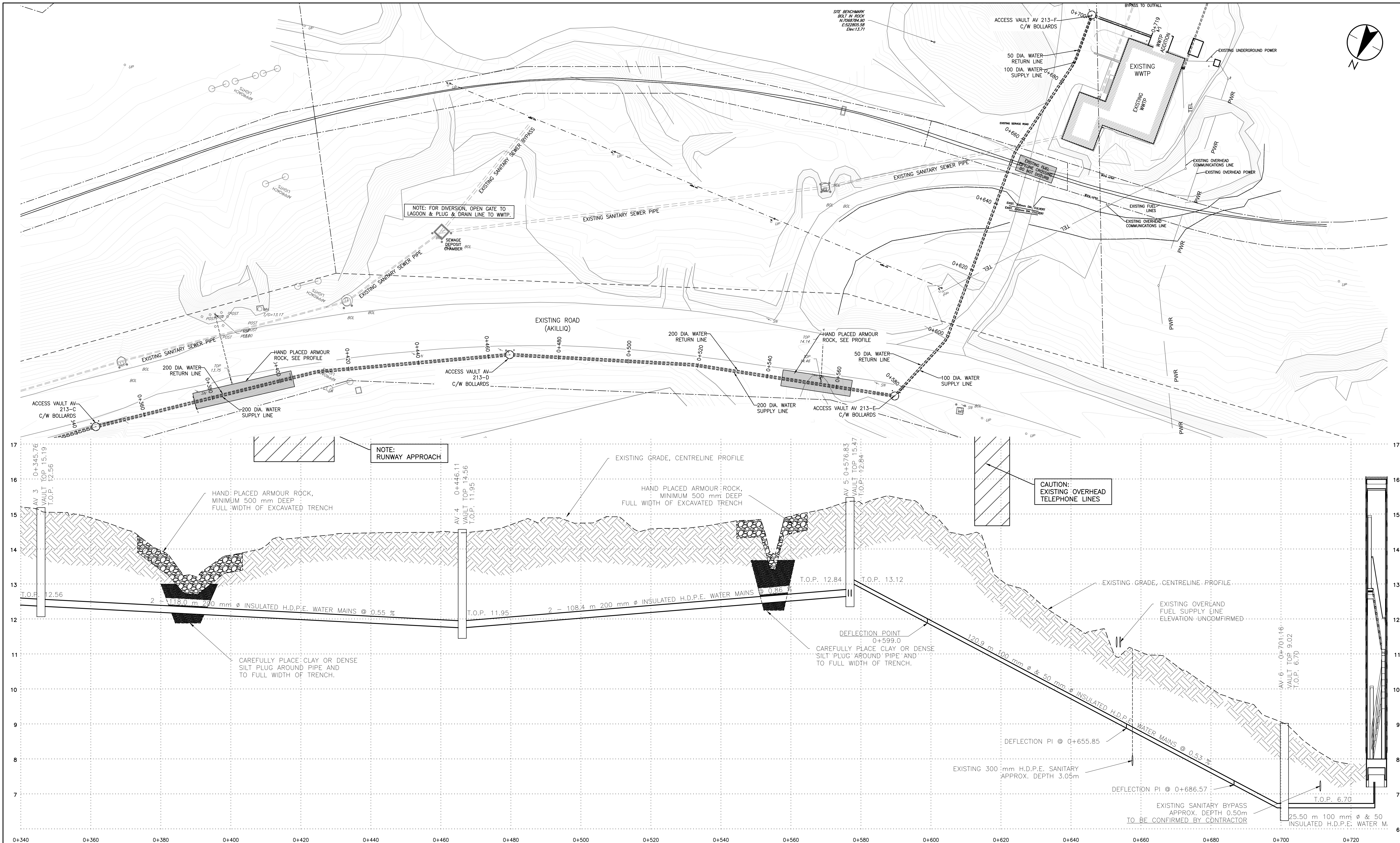
Project No.
110126045

Drawing No.
C210

Scale
HOR. 1:500
VER. 1:50

Sheet
2 of 10

Revision
0

[illegible]

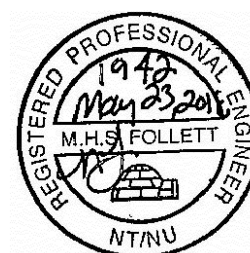
Consultants

Permit-Seal

PERMIT TO PRACTICE
NUNAMI STANTEC LTD.

Signature [Signature]
Date 23 May 2018

PERMIT NUMBER: P 1117
NT/NU Association of Professional Engineers
and Geoscientists
110126045



NUNAMI
STANTEC LIMITED

1088C Noble House
Iqaluit NU
www.stantec.com

The Contractor shall verify and be responsible for all dimensions. DO NOT scale the drawing - any errors or omissions shall be reported to Stantec without delay.
The Copyrights to all designs and drawings are the property of Stantec. Reproduction or use for any purpose other than that authorized by Stantec is forbidden.

Client/Project



IQALUIT WASTEWATER TREATMENT PLANT
UPGRADE

City of Iqaluit, Nunavut

File Name: C210-211.dwg	BWB/IGM	WO	MF	18.02.28
	Dwn.	Chkd.	Dsan.	YY.MM.DD

Title

CIVIL
PLAN PROFILE
STA. 0+340 - STA. 0+724

Project No.
110126045

Drawing No.

Scale 0 5 15 25m
HOR. 1:500
VER. 1:50

Sheet _____ Revision _____

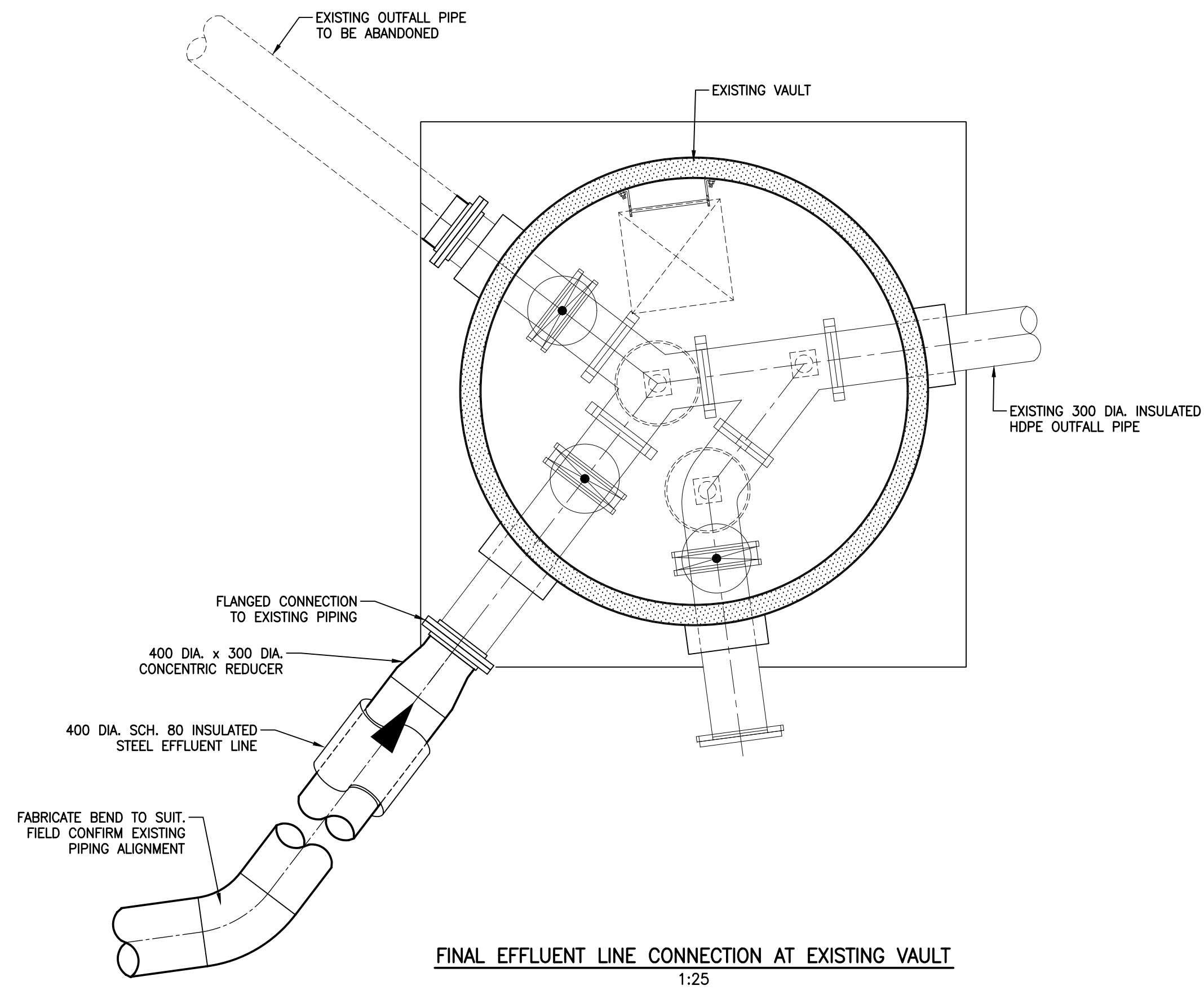
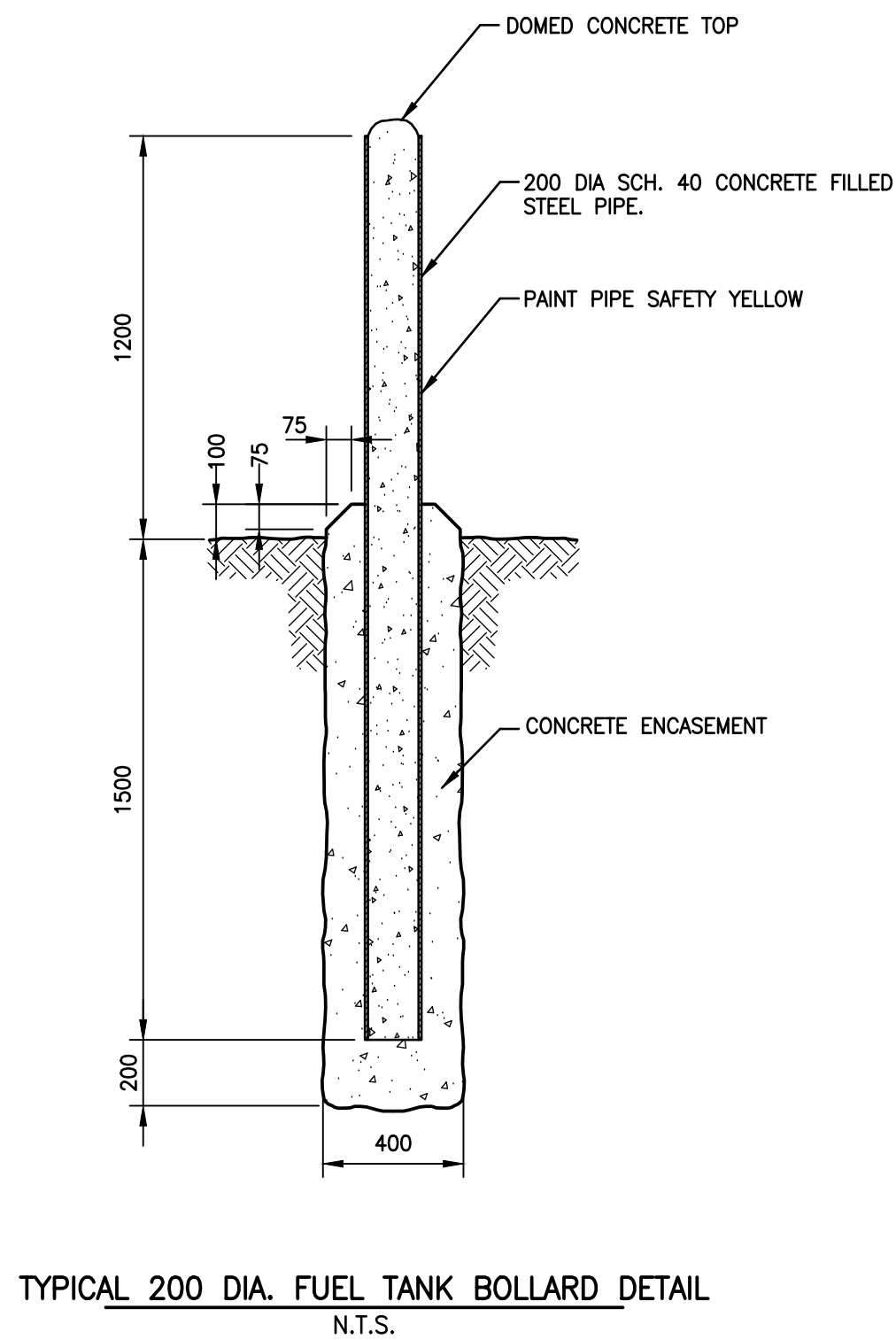
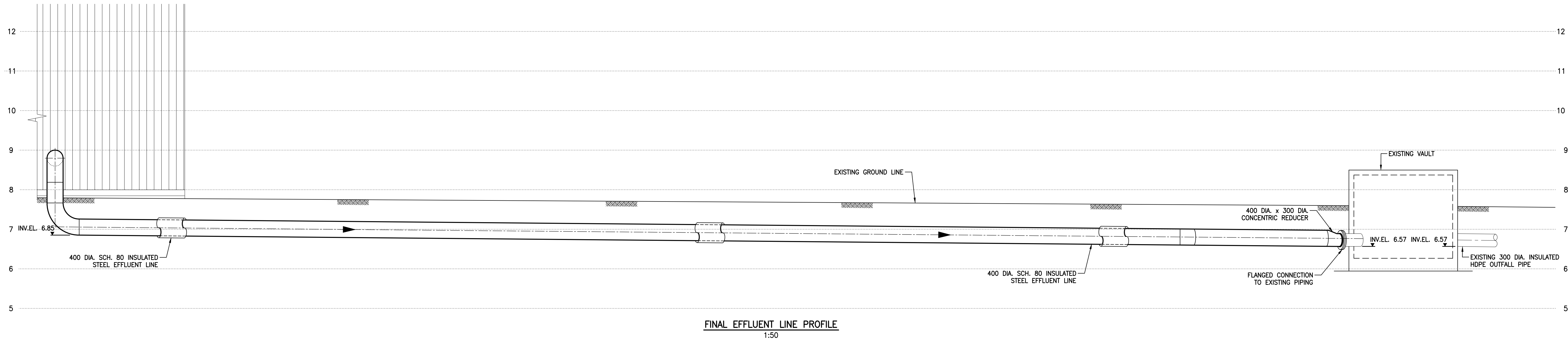
C211

3 of 10

0

ORIGINAL SHEET - ISO A1

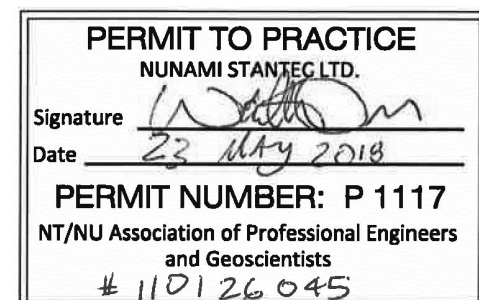
U:\110126045\drawings\01-civil\current\C501.dwg
2018/05/29 7:51 AM By: Bucknacker, Benjie



Revision	By	Appd.	YY.MM.DD
1	ISSUED FOR CONSTRUCTION	IGM	GAP 18.05.23
0	ISSUED FOR BID	IGM	GAP 18.04.09
Issued	By	Appd.	YY.MM.DD

Consultants

Permit-Seal



1088C Noble House
Iqaluit NU
www.stantec.com

The Contractor shall verify and be responsible for all dimensions. DO NOT scale the drawing - any errors or omissions shall be reported to Stantec without delay.
The Copyrights to all designs and drawings are the property of Stantec. Reproduction or use for any purpose other than that authorized by Stantec is forbidden.

Client/Project



IQALUIT WASTEWATER TREATMENT PLANT
UPGRADE
City of Iqaluit, Nunavut

File Name: C501.dwg	BWB	DSL	KLB	16.06.23
	Dwn.	Chkd.	Dsgn.	YY.MM.DD

Title

CIVIL
FINAL EFFLUENT LINE PROFILE AND
MISCELLANEOUS DETAILS

Project No.
110126045

Scale
AS SHOWN

Drawing No.

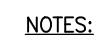
Sheet

Revision

C501

4 of 10

0

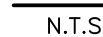


1. SOFT OR UNSTABLE GROUND CONDITIONS, FROZEN OR UNFROZEN, UNDERCUT SUBGRADE AS DIRECTED BY ENGINEER. (OVER EXCAVATION MEASURED IN CUBIC METRES).
2. EXCAVATION CROSS-SECTION MAY VARY WITH DISTANCE BETWEEN MAINS, DEPTH OF OVER EXCAVATION, AND SOIL CONDITIONS.
3. TYPICAL FOR COMMON TRENCH BACKFILL, TWO OR MORE MAINS, MAXIMUM PIPE SPACING 1000 mm.
4. FOR SINGLE MAIN TRENCH OVER EXCAVATION, WIDTH IS TO BE MEASURED AS PIPE O.D. PLUS 400mm.
5. TRENCH TO BE EXCAVATED AND SHAPED IN CONFORMANCE TO CURRENT WSCC REGULATIONS.

Revision	By	Appd.	YY.MM.DD
1 ISSUED FOR CONSTRUCTION	IGM	GAP	18.05.23
0 ISSUED FOR BID	IGM	GAP	18.04.09
Issued	By	Appd.	YY.MM.DD

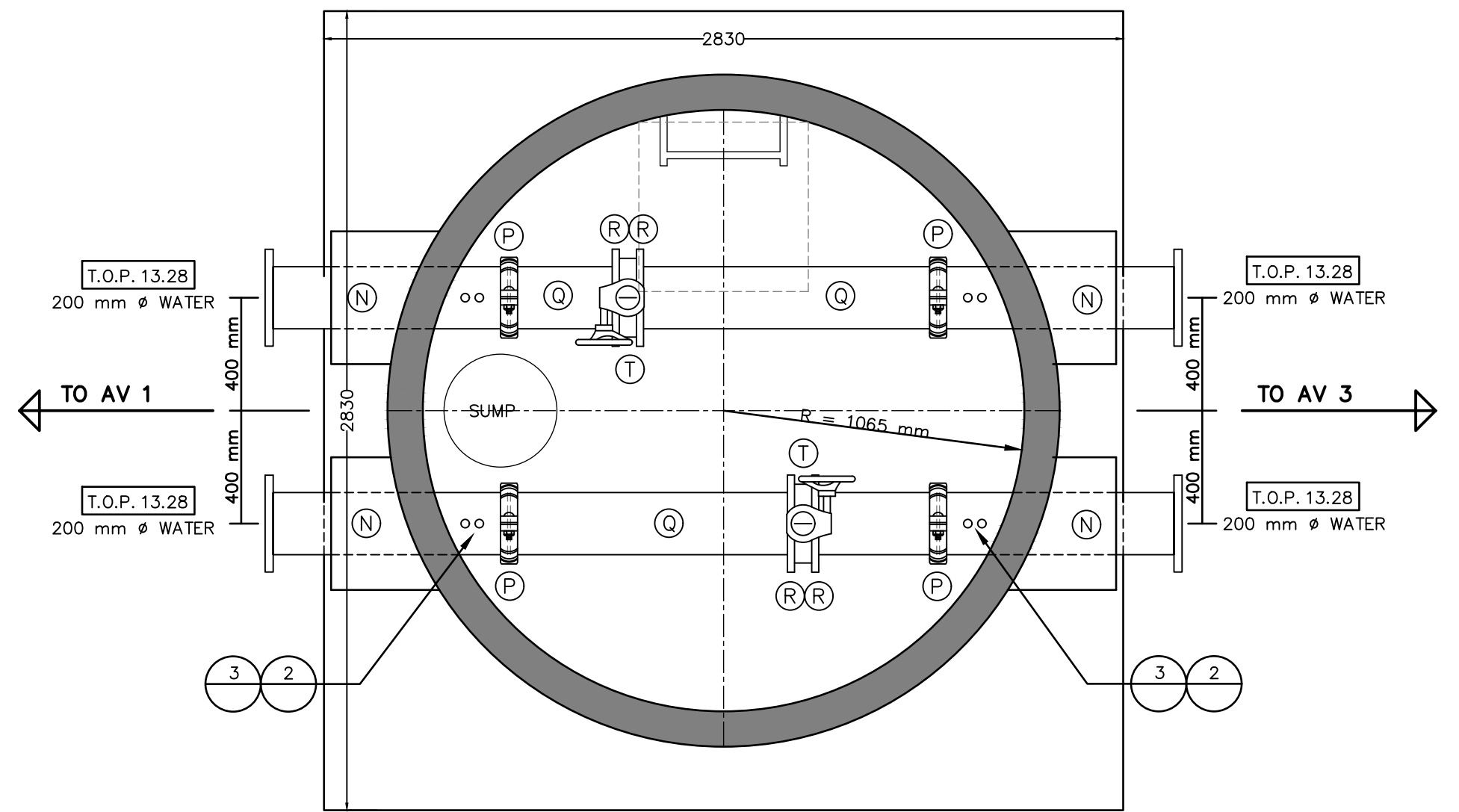
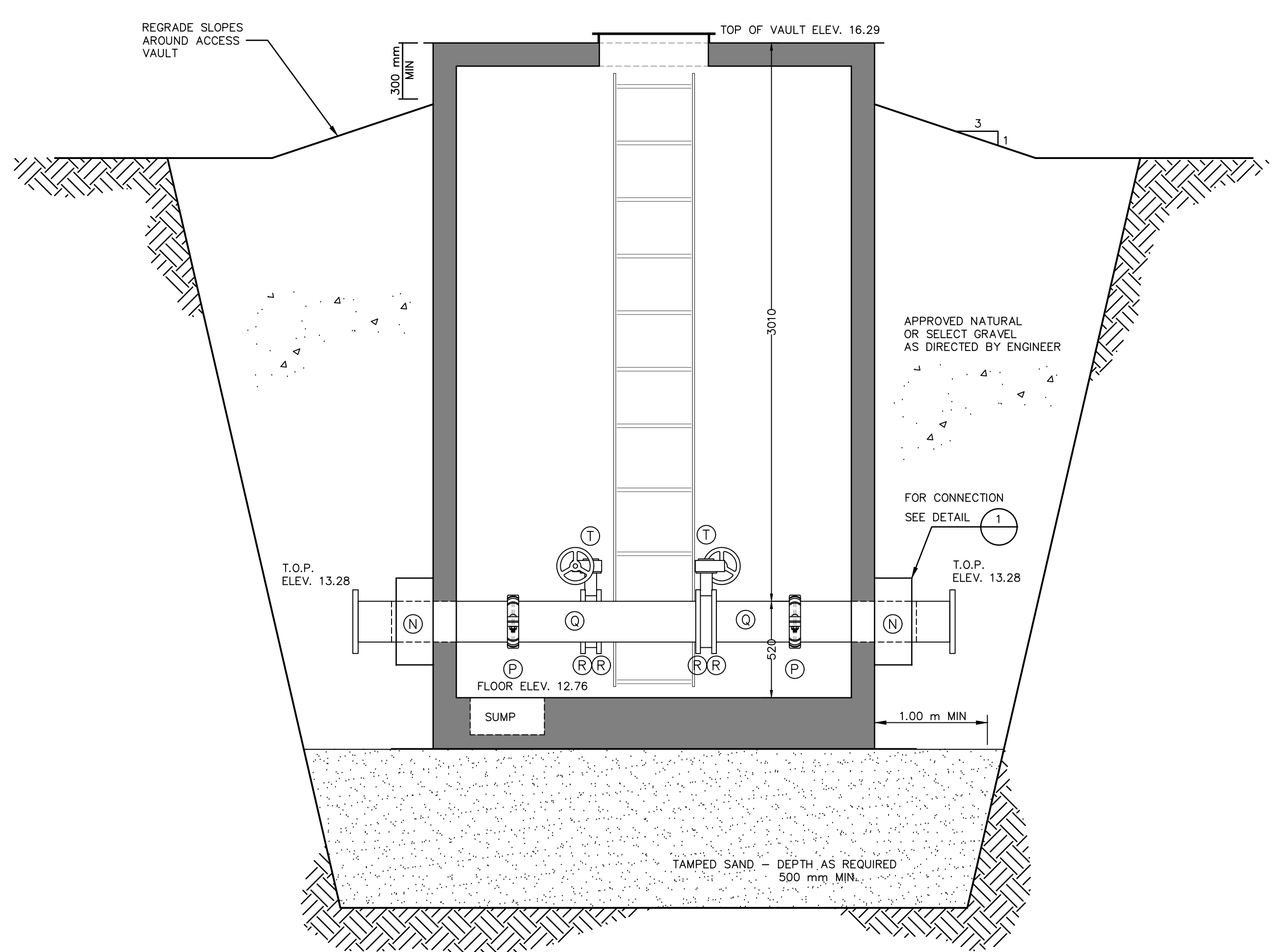
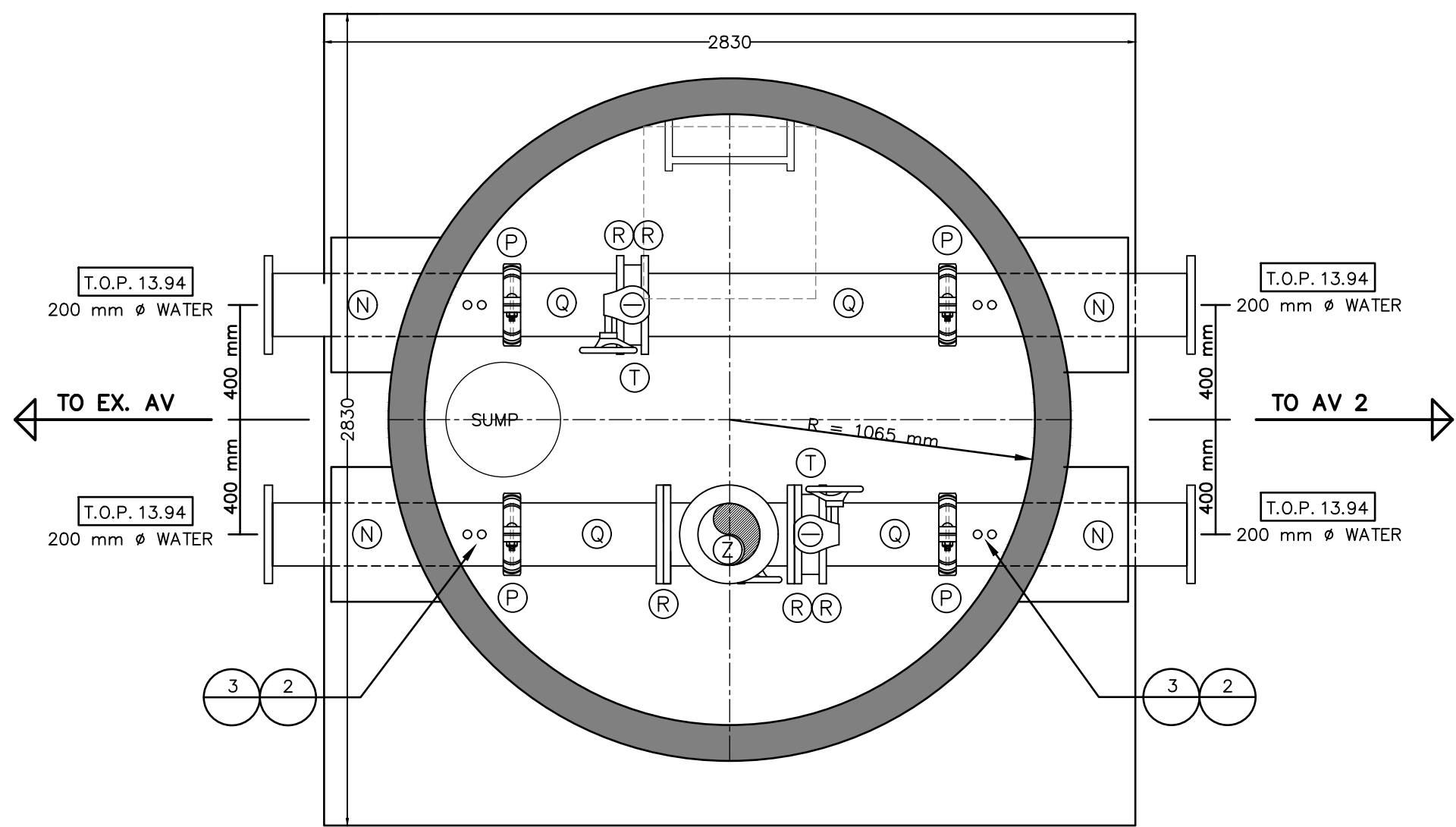
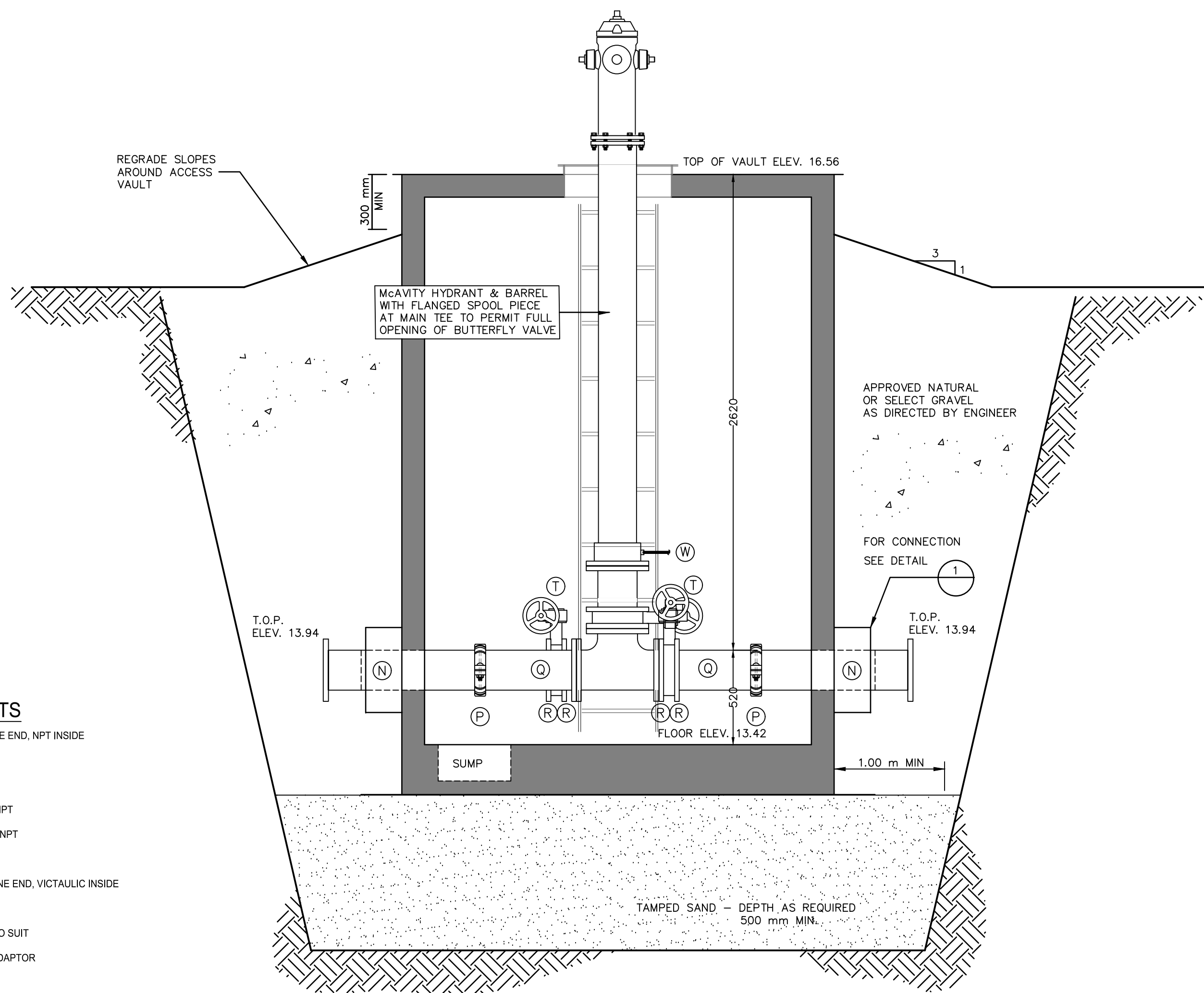
0

N.T.S.

0

LIST OF COMPONENTS

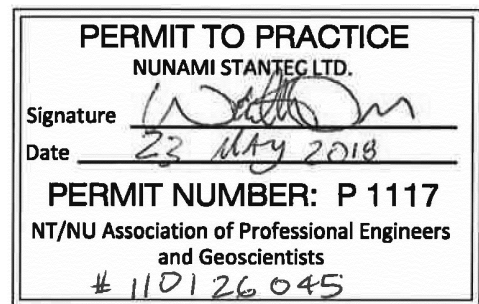
- (A) 50 mm STEEL TRANSITION, FLANGED ONE END, NPT INSIDE
- (B) 50 mm STAINLESS STEEL UNION, FNPT
- (C) 50 mm STAINLESS STEEL NIPPLE, MNPT
- (D) 50 mm STAINLESS STEEL ELBOW, 90°, FNPT
- (E) 50 mm STAINLESS STEEL GATE VALVE, FNPT
- (F) 50 mm STAINLESS STEEL WELDOLET
- (G) 100 mm STEEL TRANSITION, FLANGED ONE END, VICTAULIC INSIDE
- (H) 100 mm VICTAULIC STYLE 77 COUPLER
- (J) 100 mm STEEL SPOOL PIECE, LENGTH TO SUIT
- (K) 100 mm VICTAULIC STYLE 741 FLANGE ADAPTOR
- (L) 100 mm VICTAULIC ELBOW, 90°
- (M) 100 mm GATE VALVE, FLANGED, NON-RISING STEM
- (N) 200 mm STEEL TRANSITION, FLANGED ONE END, VICTAULIC INSIDE
- (P) 200 mm VICTAULIC STYLE 77 COUPLER
- (Q) 200 mm STEEL SPOOL PIECE, LENGTH TO SUIT
- (R) 200 mm VICTAULIC STYLE 741 FLANGE ADAPTOR
- (S) 200 mm VICTAULIC ELBOW, 90°
- (T) 200 mm BUTTERFLY VALVE, LUG BODY W/ HANDWHEEL & GEAR OPERV
- (U) 200 mm VICTAULIC CAP, No 60 (BLIND FLANGE)
- (V) 50 mm x 50 mm x 50 mm TEE, IPT
- (W) GARDEN HOSE ATTACHED TO HYDRANT DRAIN PORT TO SUMP
- (Z) 200 mm TEE, FLANGED



Revision	By	Appd.	YY.MM.DD
1	ISSUED FOR CONSTRUCTION	IGM	GAP 18.05.23
0	ISSUED FOR BID	IGM	GAP 18.04.09
Issued		By	Appd. YY.MM.DD

Consultants

Permit-Seal



NUNAMI
STANTEC LIMITED

1088C Noble House
Iqaluit NU
www.stantec.com

The Contractor shall verify and be responsible for all dimensions. DO NOT scale the drawing - any errors or omissions shall be reported to Stantec without delay.
The Copyrights to all designs and drawings are the property of Stantec. Reproduction or use for any purpose other than that authorized by Stantec is forbidden.

Client/Project



IQALUIT WASTEWATER TREATMENT PLANT
UPGRADE
City of Iqaluit, Nunavut

File Name: C502-507.dwg

IGM W.O. M.F. 18.02.28
Dwn. Chkd. Dsgn. YY.MM.DD

Title

CIVIL
ACCESS VAULTS 1 & 2
PLAN & SECTION

Project No.
110126045

Scale
N.T.S.

Drawing No.

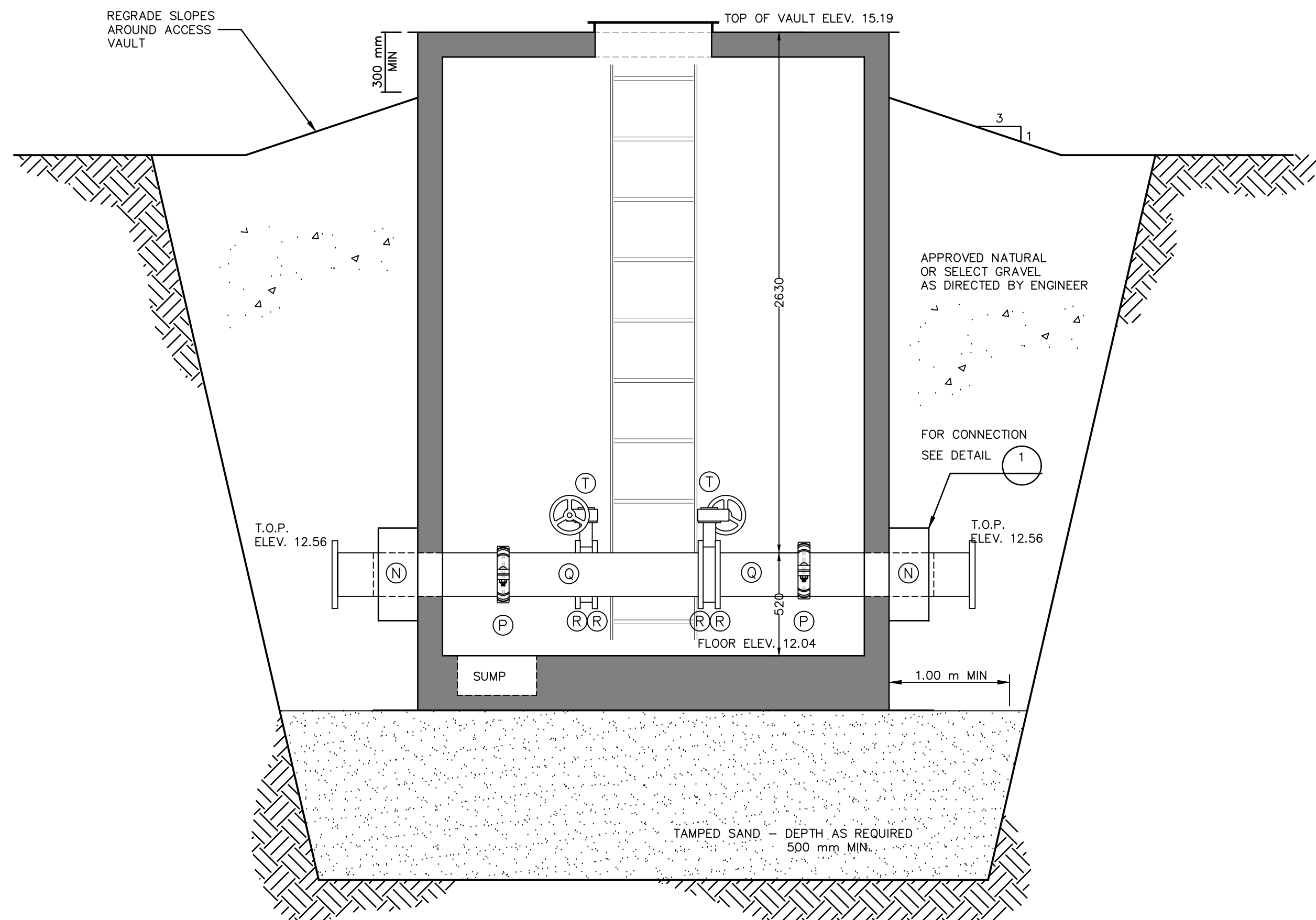
Sheet

Revision

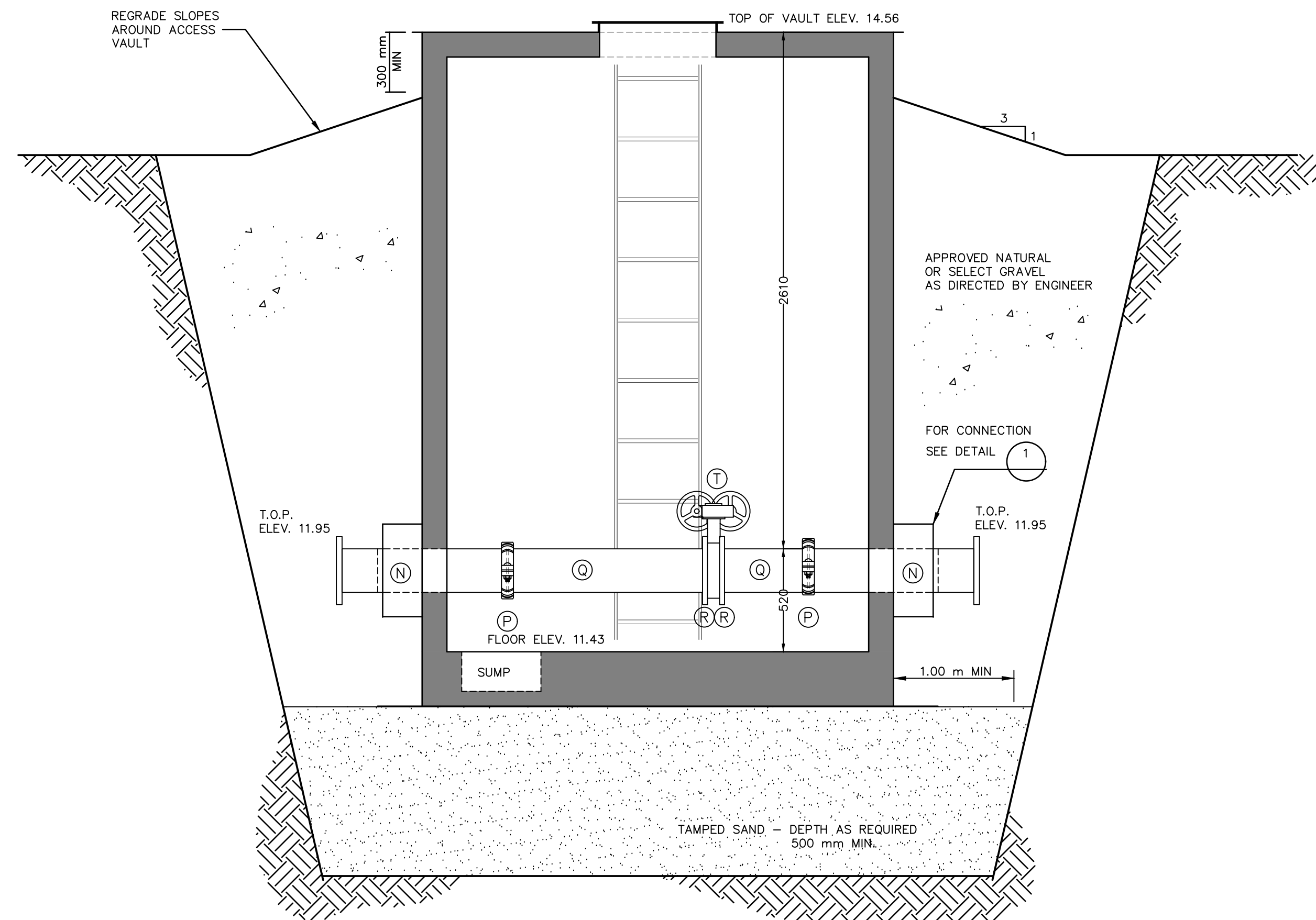
C504

7 of 10

0



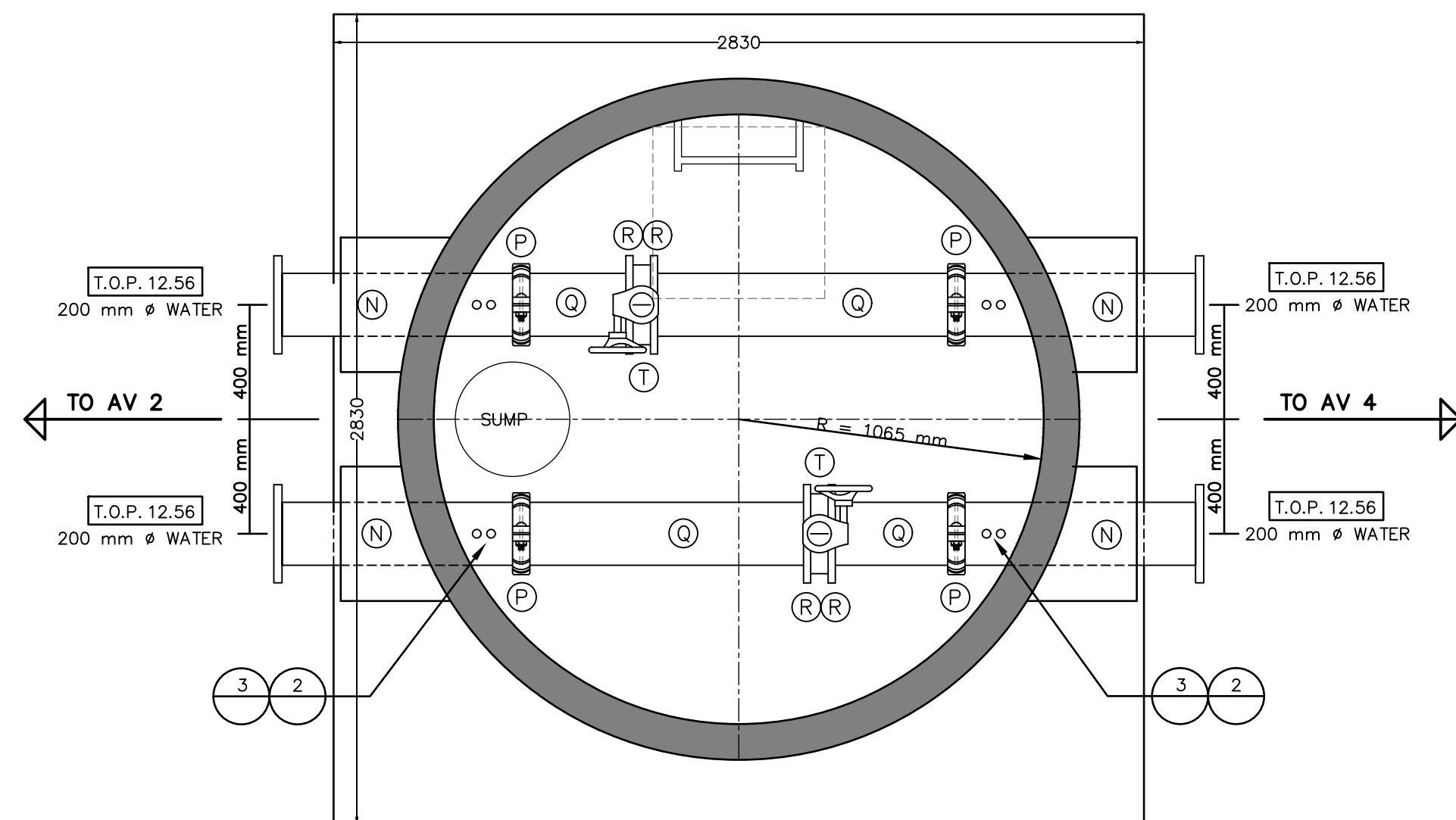
SECTION - ACCESS VAULT 213-C



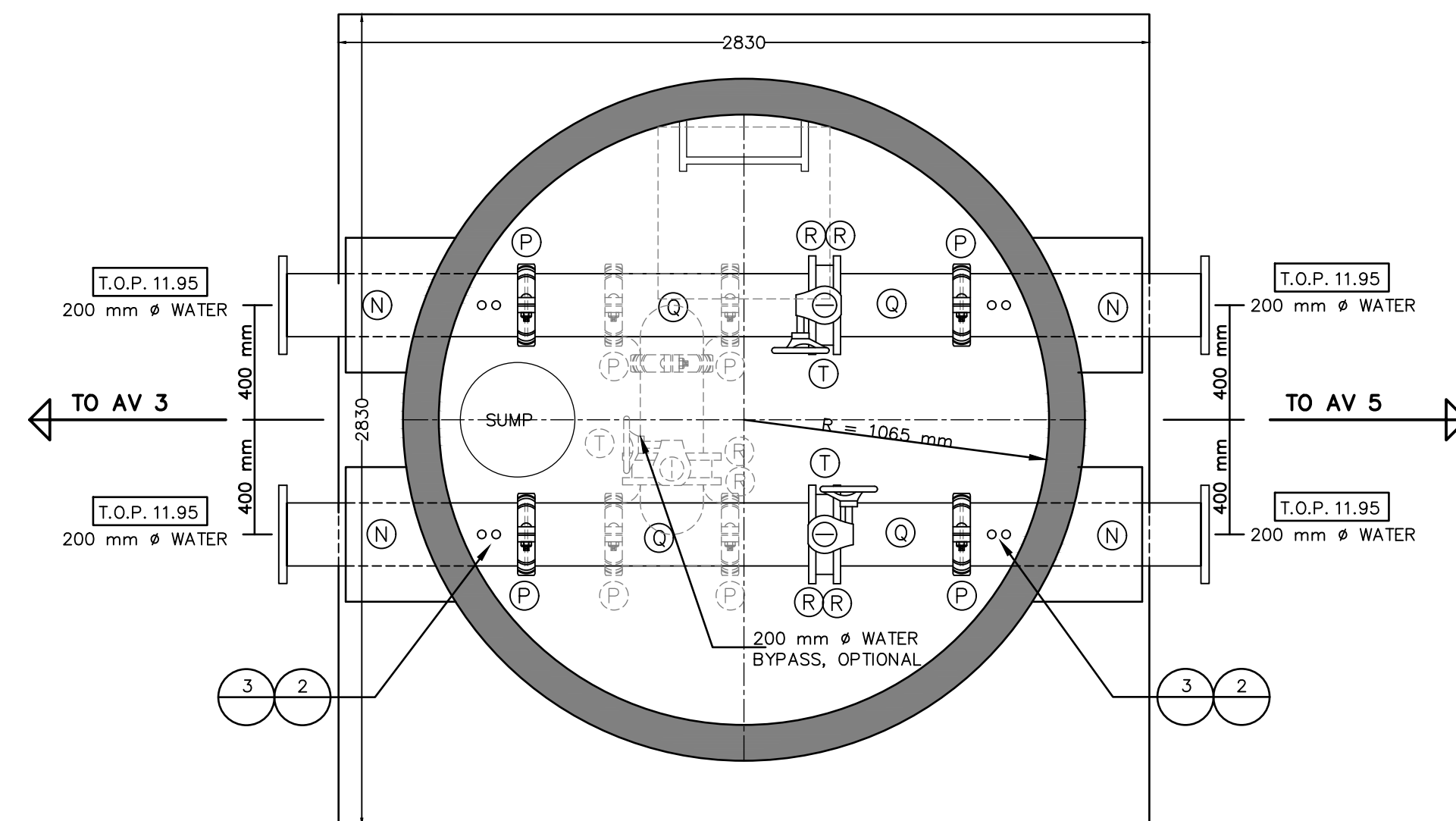
SECTION - ACCESS VAULT 213-D

LIST OF COMPONENTS

- (A) 50 mm STEEL TRANSITION, FLANGED ONE END, NPT INSIDE
- (B) 50 mm STAINLESS STEEL UNION, FNPT
- (C) 50 mm STAINLESS STEEL NIPPLE, MNPT
- (D) 50 mm STAINLESS STEEL ELBOW, 90°, FNPT
- (E) 50 mm STAINLESS STEEL GATE VALVE, FNPT
- (F) 50 mm STAINLESS STEEL WELDOLET
- (G) 100 mm STEEL TRANSITION, FLANGED ONE END, VICTAULIC INSIDE
- (H) 100 mm VICTAULIC STYLE 77 COUPLER
- (J) 100 mm STEEL SPOOL PIECE, LENGTH TO SUIT
- (K) 100 mm VICTAULIC STYLE 741 FLANGE ADAPTOR
- (L) 100 mm VICTAULIC ELBOW, 90°
- (M) 100 mm GATE VALVE, FLANGED, NON-RISING STEM
- (N) 200 mm STEEL TRANSITION, FLANGED ONE END, VICTAULIC INSIDE
- (P) 200 mm VICTAULIC STYLE 77 COUPLER
- (Q) 200 mm STEEL SPOOL PIECE, LENGTH TO SUIT
- (R) 200 mm VICTAULIC STYLE 741 FLANGE ADAPTOR
- (S) 200 mm VICTAULIC ELBOW, 90°
- (T) 200 mm BUTTERFLY VALVE, LUG BODY W/ HANDWHEEL & GEAR OPERATOR
- (U) 200 mm VICTAULIC CAP, No 60 (BLIND FLANGE)
- (V) 50 mm x 50 mm x 50 mm TEE, IPT
- (W) GARDEN HOSE ATTACHED TO HYDRANT DRAIN PORT TO SUMP
- (Z) 200 mm TEE, FLANGED



PLAN - ACCESS VAULT 213-C

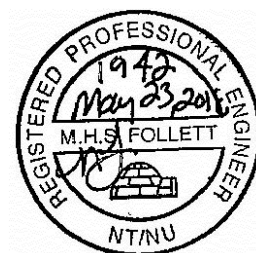
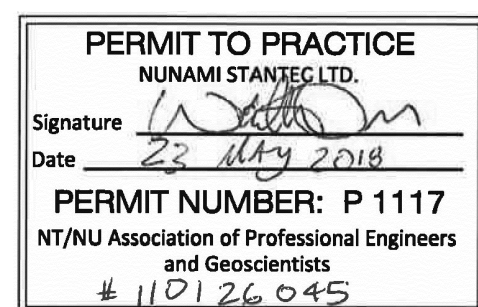


PLAN - ACCESS VAULT 213-D

Revision	By	Appd.	YY.MM.DD
1	IGM	GAP	18.05.23
0	IGM	GAP	18.04.09
Issued	By	Appd.	YY.MM.DD

Consultants

Permit-Seal



NUNAMI
STANTEC LIMITED

1088C Noble House
Iqaluit NU
www.stantec.com

The Contractor shall verify and be responsible for all dimensions. DO NOT scale the drawing - any errors or omissions shall be reported to Stantec without delay.
The Copyrights to all designs and drawings are the property of Stantec. Reproduction or use for any purpose other than that authorized by Stantec is forbidden.

Client/Project



IQALUIT WASTEWATER TREATMENT PLANT
UPGRADE
City of Iqaluit, Nunavut

File Name: C502-507.dwg

IGM WO MF 18.02.28
Dwn. Chkd. Dsgn. YY.MM.DD

Title

CIVIL
ACCESS VAULTS 3 & 4
PLAN & SECTION

Project No.
110126045

Scale
N.T.S.

Drawing No.

Sheet

Revision

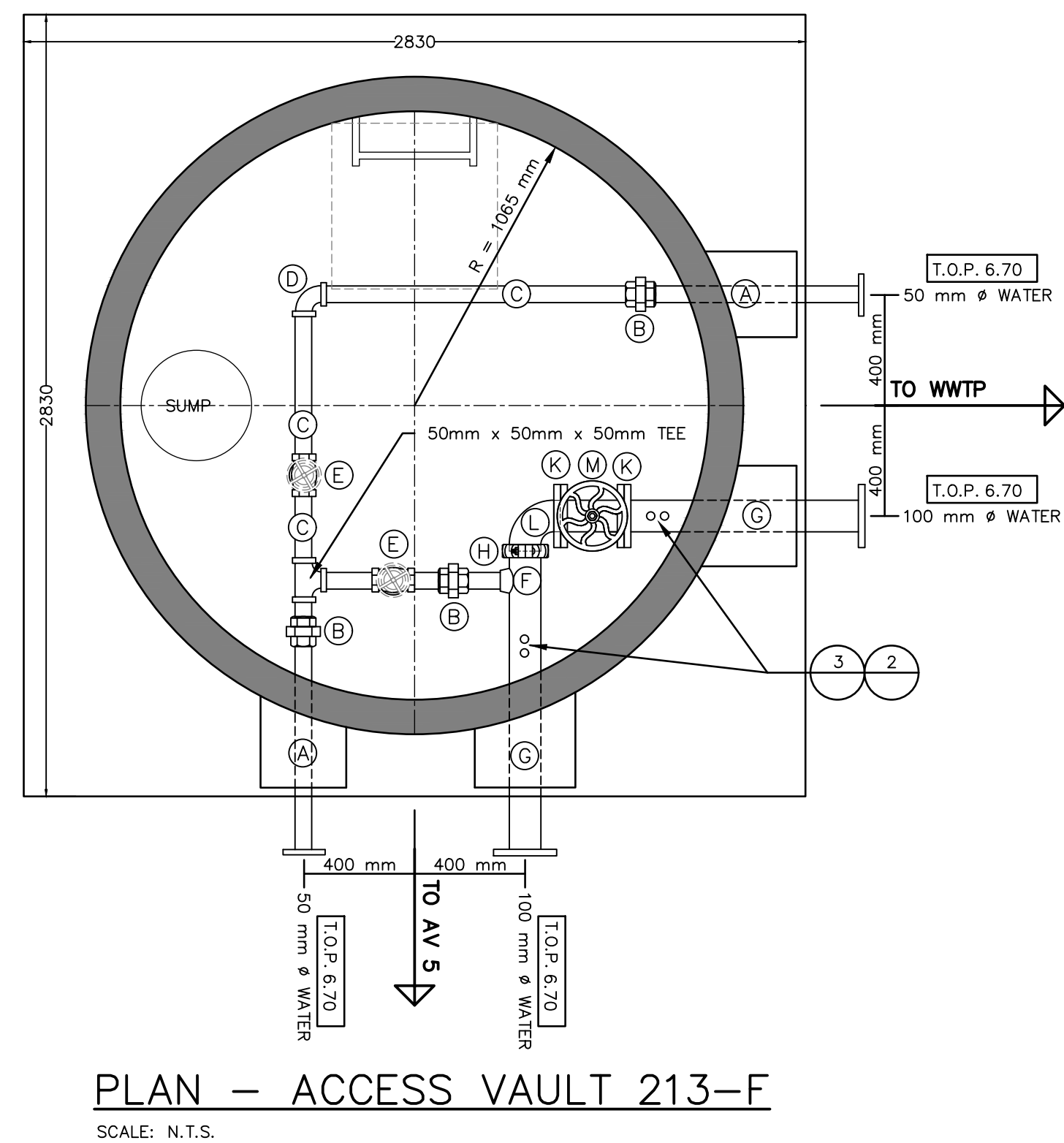
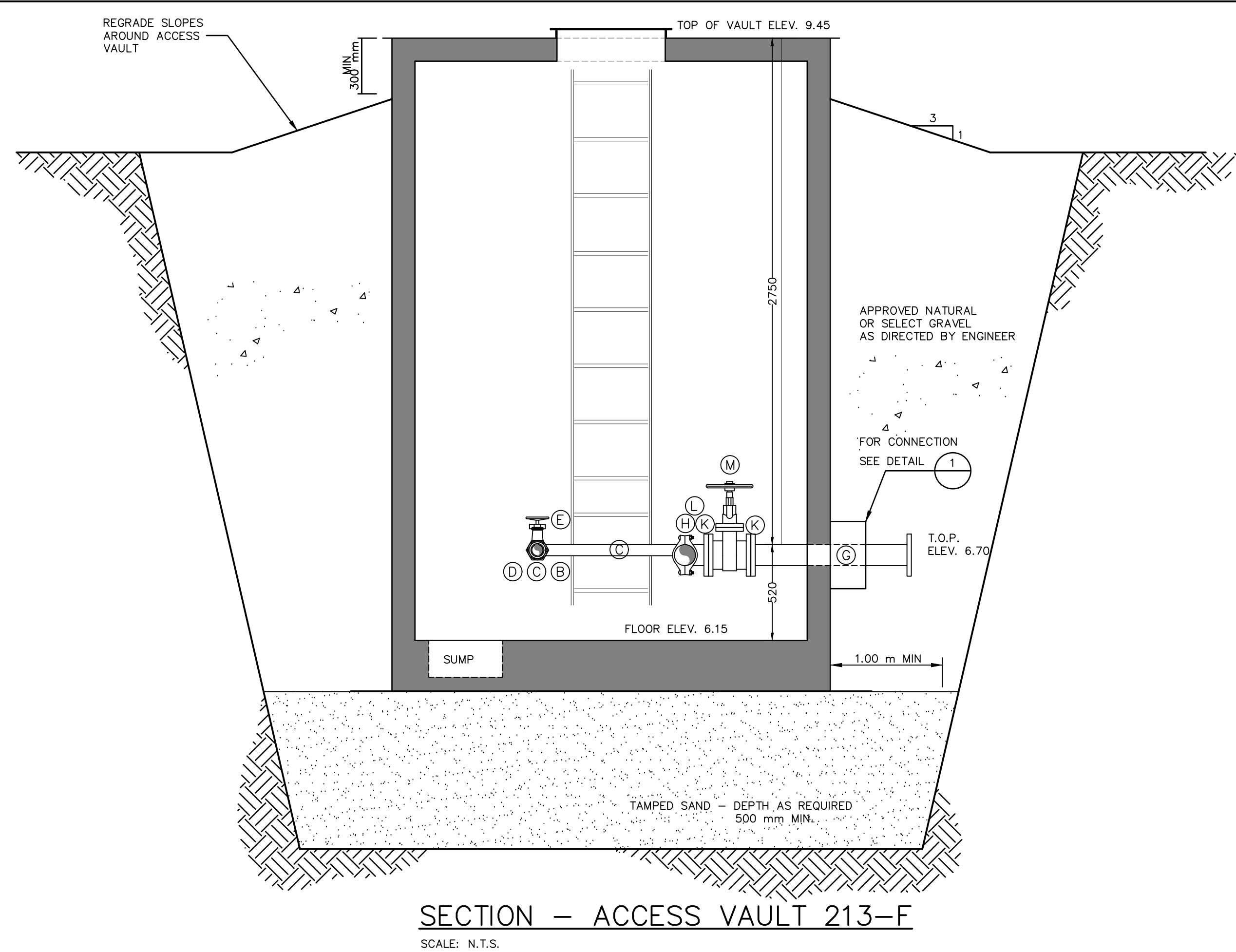
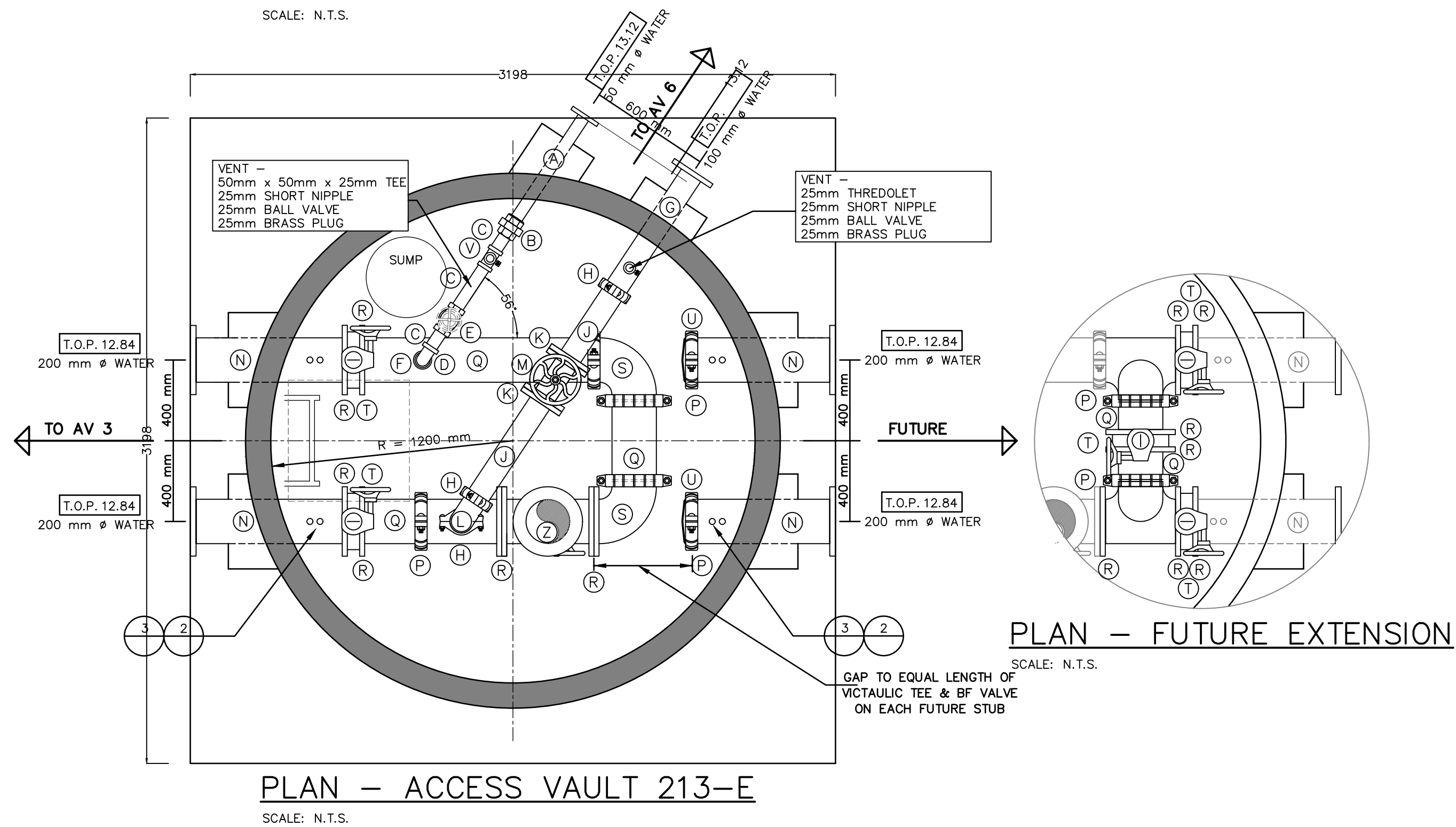
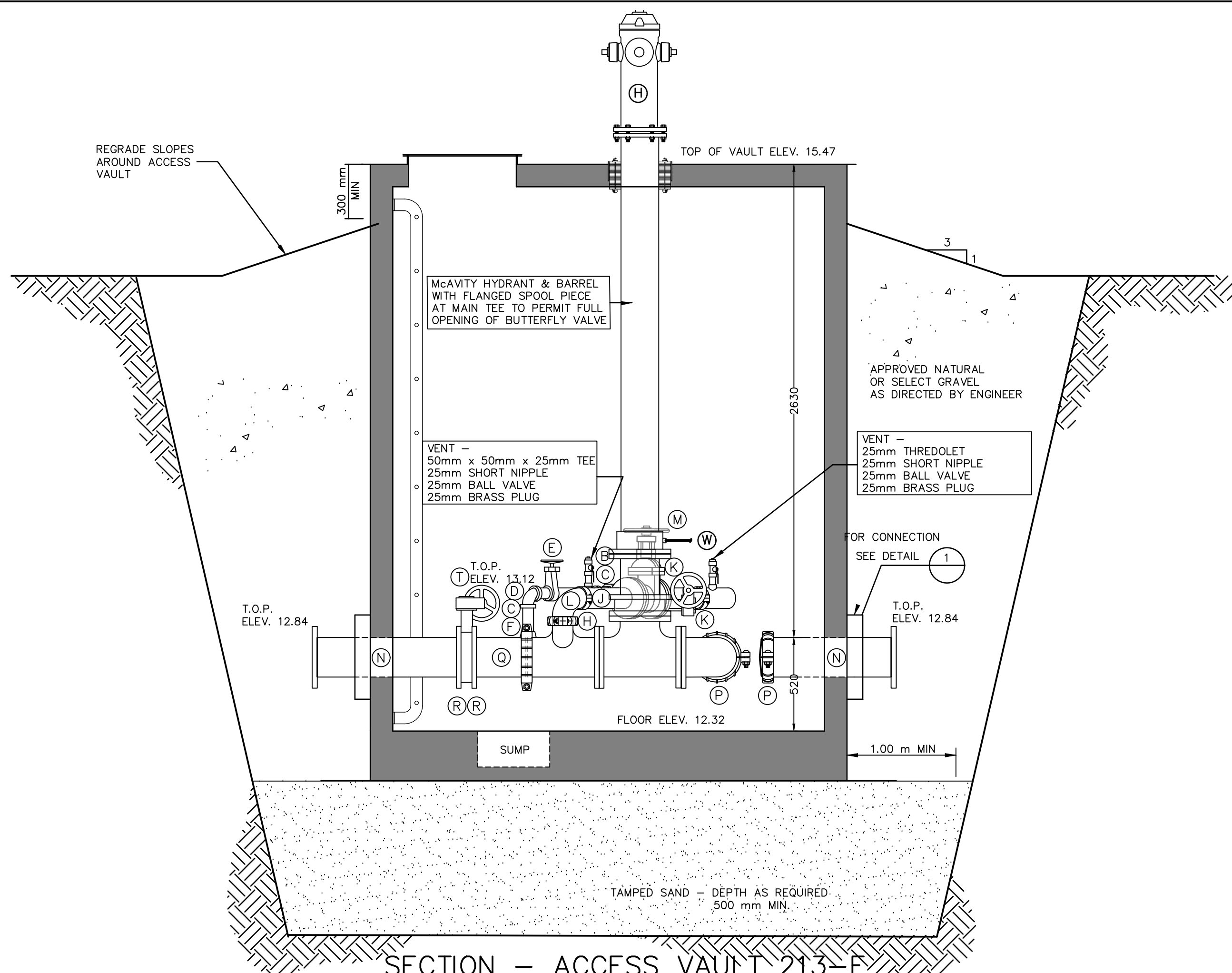
C505

8 of 10

0

LIST OF COMPONENTS

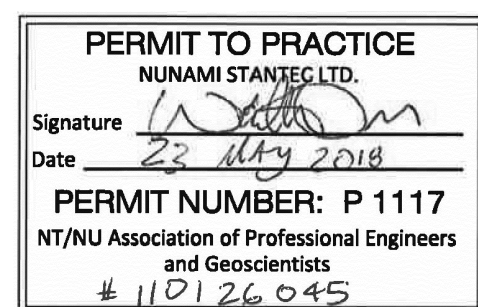
- (A) 50 mm STEEL TRANSITION, FLANGED ONE END, NPT INSIDE
(B) 50 mm STAINLESS STEEL UNION, FNPT
(C) 50 mm STAINLESS STEEL NIPPLE, MNPT
(D) 50 mm STAINLESS STEEL ELBOW, 90°, FNPT
(E) 50 mm STAINLESS STEEL GATE VALVE, FNPT
(F) 50 mm STAINLESS STEEL WELDOLET
(G) 100 mm STEEL TRANSITION, FLANGED ONE END, VICTAULIC INSIDE
(H) 100 mm VICTAULIC STYLE 77 COUPLER
(J) 100 mm STEEL SPOOL PIECE, LENGTH TO SUIT
(K) 100 mm VICTAULIC STYLE 741 FLANGE ADAPTOR
(L) 100 mm VICTAULIC ELBOW, 90°
(M) 100 mm GATE VALVE, FLANGED, NON-RISING STEM
(N) 200 mm STEEL TRANSITION, FLANGED ONE END, VICTAULIC INSIDE
(P) 200 mm VICTAULIC STYLE 77 COUPLER
(Q) 200 mm STEEL SPOOL PIECE, LENGTH TO SUIT
(R) 200 mm VICTAULIC STYLE 741 FLANGE ADAPTOR
(S) 200 mm VICTAULIC ELBOW, 90°
(T) 200 mm BUTTERFLY VALVE, LUG BODY W/ HANDWHEEL & GEAR OPERATOR
(U) 200 mm VICTAULIC CAP, No 60 (BLIND FLANGE)
(V) 50 mm x 50 mm x 50 mm TEE, IPT
(W) GARDEN HOSE ATTACHED TO HYDRANT DRAIN PORT TO SUMP
(Z) 200 mm TEE, FLANGED



Revision	By	Appd.	YY.MM.DD
1	IGM	GAP	18.05.23
0	IGM	GAP	18.04.09
Issued	By	Appd.	YY.MM.DD

Consultants

Permit-Seal



NUNAMI
STANTEC LIMITED

1088C Noble House
Iqaluit NU
www.stantec.com

The Contractor shall verify and be responsible for all dimensions. DO NOT scale the drawing - any errors or omissions shall be reported to Stantec without delay.
The Copyrights to all designs and drawings are the property of Stantec. Reproduction or use for any purpose other than that authorized by Stantec is forbidden.

Client/Project



IQALUIT WASTEWATER TREATMENT PLANT
UPGRADE
City of Iqaluit, Nunavut

File Name: C502-507.dwg

IGM WO MF 18.02.28
Dwn. Chkd. Dsgn. YY.MM.DD

Title

CIVIL
ACCESS VAULTS 5 & 6
PLAN & SECTION

Project No.
110126045

Scale
N.T.S.

Drawing No.

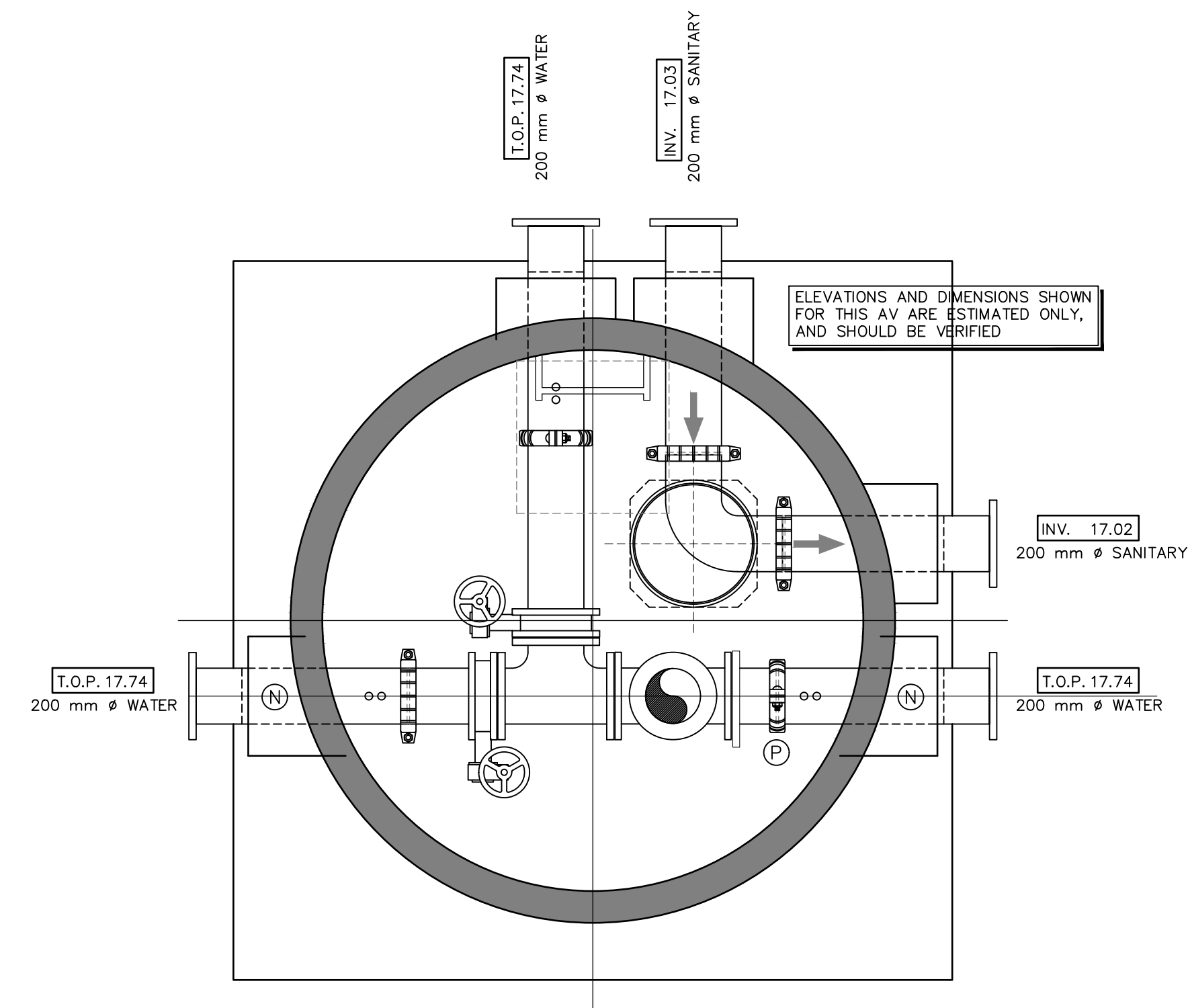
Sheet

Revision

C506

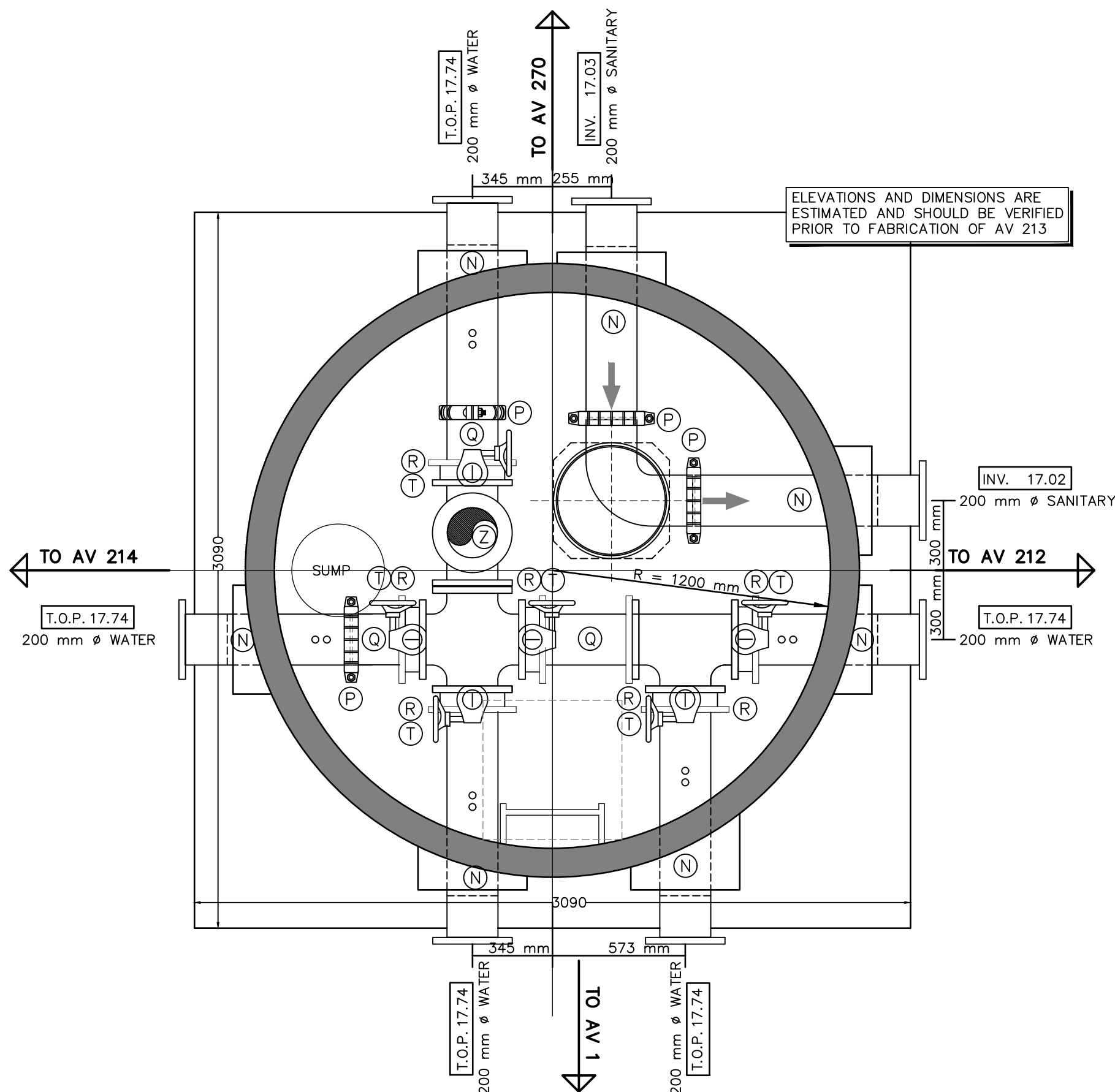
9 of 10

0



PLAN - EX. ACCESS VAULT 213

SCALE: 1:20

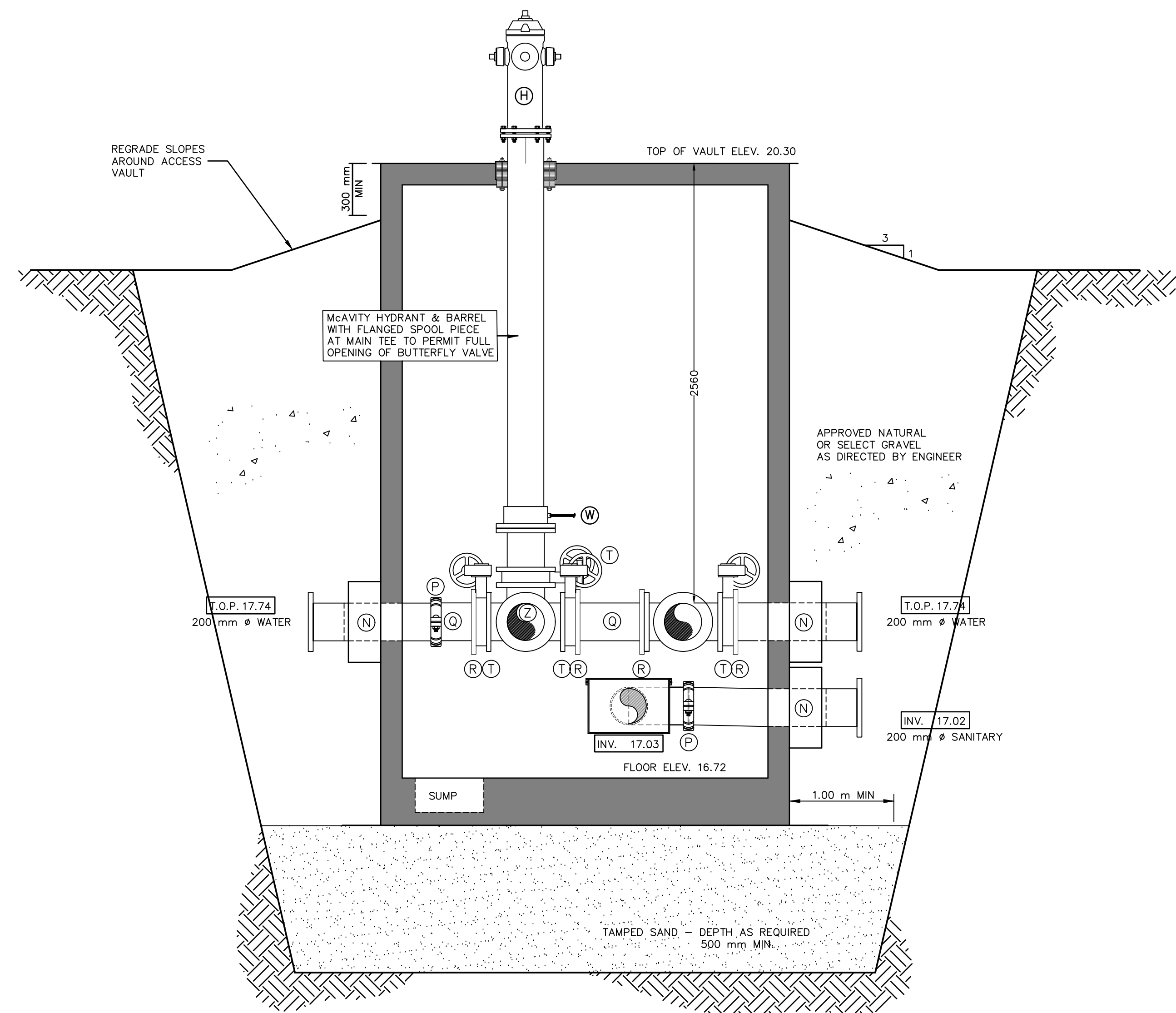


PLAN - NEW ACCESS VAULT 213

SCALE: 1:20

LIST OF COMPONENTS

- (A) 50 mm STEEL TRANSITION, FLANGED ONE END, NPT INSIDE
- (B) 50 mm STAINLESS STEEL UNION, FNPT
- (C) 50 mm STAINLESS STEEL NIPPLE, MNPT
- (D) 50 mm STAINLESS STEEL ELBOW, 90°, FNPT
- (E) 50 mm STAINLESS STEEL GATE VALVE, FNPT
- (F) 50 mm STAINLESS STEEL WELDOLET
- (G) 100 mm STEEL TRANSITION, FLANGED ONE END, VICTAULIC INSIDE
- (H) 100 mm VICTAULIC STYLE 77 COUPLER
- (J) 100 mm STEEL SPOOL PIECE, LENGTH TO SUIT
- (K) 100 mm VICTAULIC STYLE 741 FLANGE ADAPTOR
- (L) 100 mm VICTAULIC ELBOW, 90°
- (M) 100 mm GATE VALVE, FLANGED, NON-RISING STEM
- (N) 200 mm STEEL TRANSITION, FLANGED ONE END, VICTAULIC INSIDE
- (P) 200 mm VICTAULIC STYLE 77 COUPLER
- (Q) 200 mm STEEL SPOOL PIECE, LENGTH TO SUIT
- (R) 200 mm VICTAULIC STYLE 741 FLANGE ADAPTOR
- (S) 200 mm VICTAULIC ELBOW, 90°
- (T) 200 mm BUTTERFLY VALVE, LUG BODY W/ HANDWHEEL & GEAR OPERATOR
- (U) 200 mm VICTAULIC CAP, No 60 (BLIND FLANGE)
- (V) 50 mm x 50 mm x 50 mm TEE, IPT
- (W) GARDEN HOSE ATTACHED TO HYDRANT DRAIN PORT TO SUMP
- (Z) 200 mm TEE, FLANGED



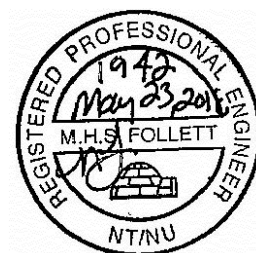
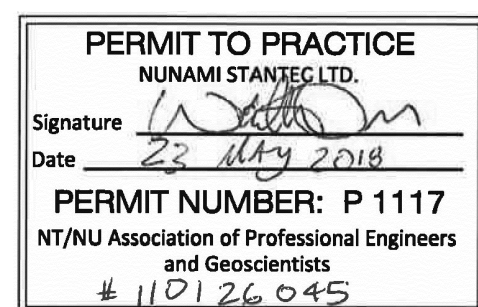
SECTION - NEW ACCESS VAULT 213

SCALE: 1:20

Revision	By	Appd.	YY.MM.DD
1	ISSUED FOR CONSTRUCTION	IGM	GAP 18.05.23
0	ISSUED FOR BID	IGM	GAP 18.04.09
Issued		By	Appd. YY.MM.DD

Consultants

Permit-Seal

**NUNAMI**
STANTEC LIMITED1088C Noble House
Iqaluit NU
www.stantec.comThe Contractor shall verify and be responsible for all dimensions. DO NOT scale the drawing - any errors or omissions shall be reported to Stantec without delay.
The Copyrights to all designs and drawings are the property of Stantec. Reproduction or use for any purpose other than that authorized by Stantec is forbidden.

Client/Project

IQALUIT WASTEWATER TREATMENT PLANT
UPGRADE
City of Iqaluit, Nunavut

File Name: C502-507.dwg

IGM WFO MF 18.02.28
Dwn. Chkd. Dsgn. YY.MM.DD

Title

CIVIL
NEW ACCESS VAULT AV 213
PLAN & SECTIONProject No.
110126045Scale
N.T.S.

Drawing No.

Sheet

Revision

C507

10 of 10

0