



## Water Licence Inspection Report

☒ Original  
☐ Follow-Up Report

Authorization	Representative
Municipality of Pangnirtung	Mary Ann Mike
Authorization No. / Expiry	Representative's Title
3BM-PAN1828	Acting Senior Administrative Officer
Activities Inspected	
<input type="checkbox"/> Camp, Commercial <input type="checkbox"/> Drilling <input type="checkbox"/> Mining <input type="checkbox"/> Construction <input type="checkbox"/> Reclamation <input type="checkbox"/> Fuel Storage <input type="checkbox"/> Roads/Hauling <input type="checkbox"/> Winter Hauling <input type="checkbox"/> Camp, Private <input checked="" type="checkbox"/> Municipality	

### Section 1 Comments

On July 21, 2025, I, Sean Noble-Nowdluk, along with Joseph Monteith, Inspectors with Crown-Indigenous Relations and Northern Affairs Canada (CIRNAC) completed an Inspection of the site named above for the purpose of verifying compliance with the terms and conditions of which this water license was issued upon.

The following list of items were inspected for compliance with the issued and valid water license:

- Municipal Water Supply
- Municipal Water Reservoir and Treatment Plant
- Municipal Sewage Treatment Plant
- Solid Waste Disposal Facility, Metal Waste Facility, and Hazardous Waste Storage Facility

Following the inspection, a conversation and debrief was conducted with Acting Senior Administrative Officer Mary Ann Mike to discuss the details of the inspection.

### Section 2 Non-Compliance with Acts or License

1. Sections of the fencing at the Solid Waste Facility were damaged and missing, allowing garbage to escape from the facility.
2. Hazardous Waste were found in the Solid Waste Facility, Burn Cap, and Waste Metal Facility.
3. Waste was observed outside of the Solid Waste Facility and was gathering in the culvert that leads to the ocean.
4. Hazardous Waste in the Hazardous Waste Facility was observed outside any form of secondary containment.

### Section 3 Action Required

1. Wind-blown debris must be collected around the fencing and set in the appropriate waste facilities.
2. Damaged fencing at the Solid Waste Facility/Burn Cap must be repaired or replaced.
3. Hazardous Waste must be stored in a designated Hazardous Waste Facility.
4. Waste/garbage must be removed from the culverts to allow water to flow through the designated path.
5. Hazardous Waste must be placed within secondary containment or in a lined berm.

Licensee or Representative	Inspector's Name
	Sean Naullaq
Signature	Signature
	<i>Sean Naullaq</i>
Date	Date
	November 24, 2025

Office Use Only: Follow-up report to be issued by Inspector

☐ Yes ☒ No



**PHOTO LOG**

Date:	Authorization Number:	Camera/Model:	Inspector
Monday, July 21, 2025	3AM-PAN1828	Samsung S23	Sean Naullaq

**Photo No. 1**

Photo



**Description:**

Duval River, Pangnirtungs main water source. Water is pumped from the Duval River up to the water reservoir via pipeline.

**Photo No. 2**

Photo



**Description:**

Photo of Pangnirtungs water reservoir.



**Photo No. 3**

Photo



**Description:**

Water delivery operations in Pangnirtung. Water is treated at the treatment plant prior to being trucked to houses.

**Photo No. 4**

Photo



**Description:**

View of the treatment plants water pick-up line from the reservoir.





Photo No. 5

Photo



**Description:**

Photo showing pipe that is used to transfer water from Duval River up to the water reservoir.

Photo No. 6

Photo



**Description:**

Part of the water filtration system inside the water treatment plant.



Photo No. 7

Photo



**Description:**

Digital monitoring of water intake located within the water treatment plant.

Photo No. 8

Photo



**Description:**

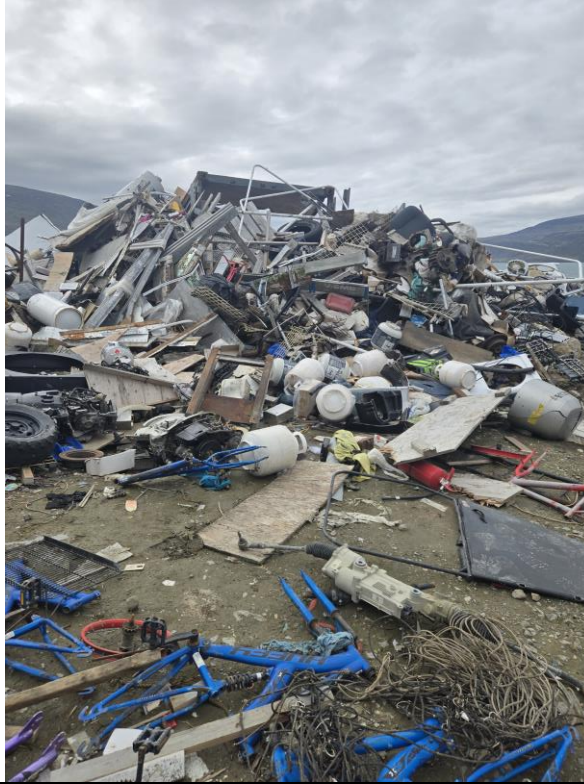
Aerial photo of Pangnirtung Solid Waste Disposal Facility with bulk metals and bulk woods.





Photo No. 9

Photo



**Description:**

Different types of hazardous waste were found in the Solid Waste Disposal Facilities. These include propane tanks, batteries, paint cans, etc.

Photo No. 10

Photo



**Description:**

Different types of hazardous waste were found in the Solid Waste Disposal Facilities. These include propane tanks, batteries, paint cans, etc.



**Photo No. 11**

Photo



**Description:**

Photo of Solid Waste Disposal Facility facing North.

**Photo No. 12**

Photo



**Description:**

Photo of Solid Waste Disposal Facility facing South.





Photo No. 13

Photo



Description:

Pangnirtungs Hazardous Waste Storage Facility.

Photo No. 14

Photo



Description:

Photo of the contents observed at the Hazardous Waste Storage Facility.





Photo No. 15

Photo



**Description:**

Ground staining was observed exiting the Hazardous Waste Disposal Facility.

Photo No. 16

Photo



**Description:**

Photo of the ditch that exits the Hazardous Waste Storage Facility.



**Photo No. 17**

Photo



**Description:**

Aerial photo of the Solid Waste Disposal Facility with the burn and cap.

**Photo No. 18**

Photo



**Description:**

Photo of miscellaneous waste found inside the Solid Waste Disposal Facility.





Photo No. 19

Photo



**Description:**

Photo of miscellaneous waste found inside the Solid Waste Disposal Facility.

Photo No. 20

Photo



**Description:**

Sections of the fencing surrounding the facility has been damaged and is allowing wind-blown debris to escape the facility.





**Photo No. 21**

Photo



**Description:**

Photo showing garbage that has entered the culvert system outside the disposal facility.

**Photo No. 22**

Photo



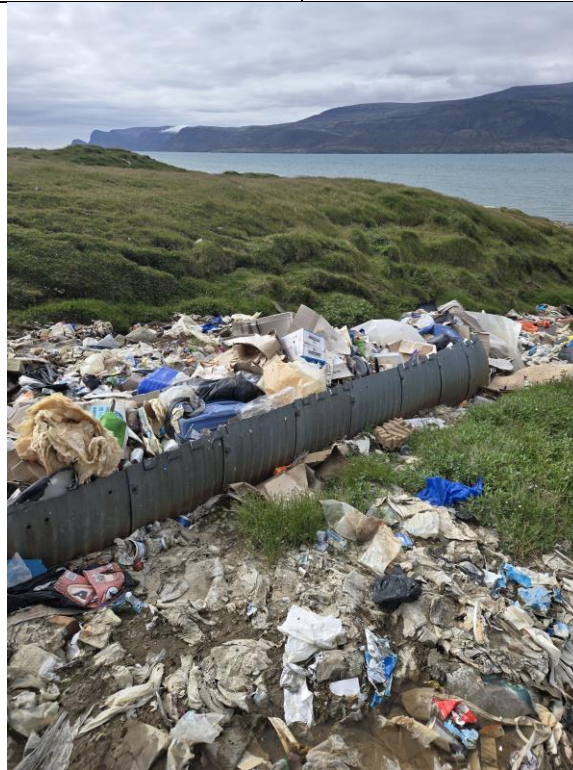
**Description:**

Photo showing garbage that has entered the culvert system outside the disposal facility.



**Photo No. 23**

Photo



**Description:**

Garbage has begun to back up in the culvert. Garbage was seen following the stream towards the ocean.

**Photo No. 24**

Photo



**Description:**

Garbage has begun to back up in the culvert. Garbage was seen following the stream towards the ocean.





**Photo No. 25**

Photo



**Description:**

Photo of Pangnirtung's treated sewage being discharged down the spillway.

**Photo No. 26**

Photo



**Description:**

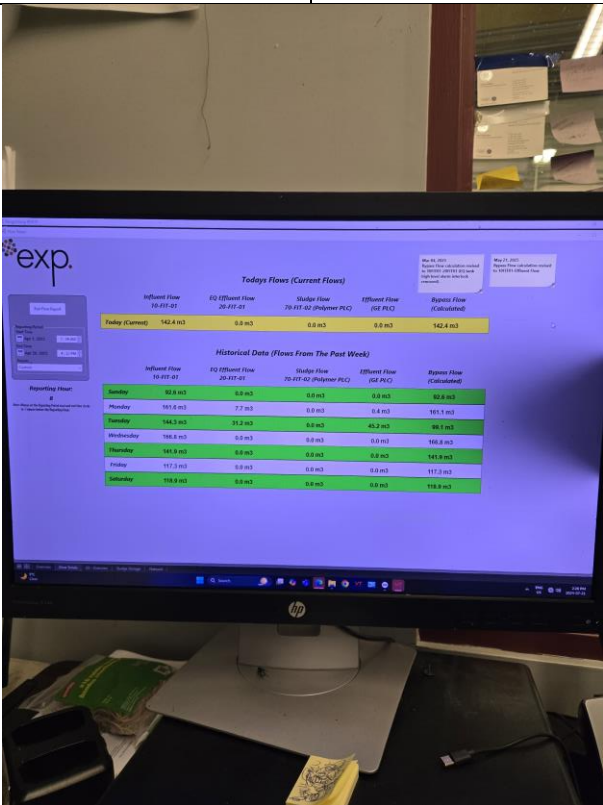
Photo of the exit pipe at the Sewage Treatment Facility. Raw sewage is treated and then discharged from the facility through this pipe.





Photo No. 27

Photo



Description:

Monitoring program at the Sewage Treatment Facility. Data is recorded digitally and with paper copies.