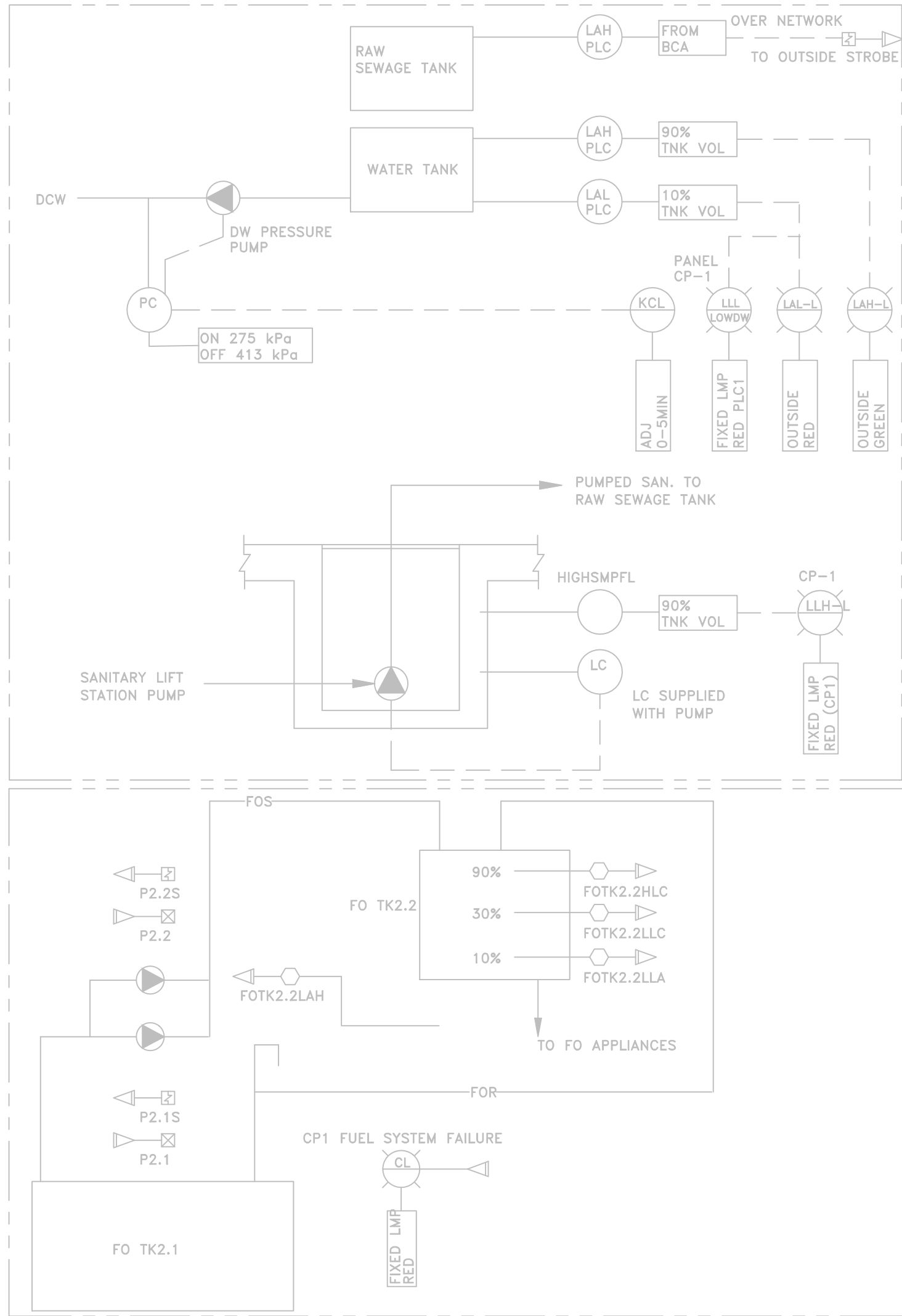


DATE: 2013 JUN 27 10:00:00 AM

PROJECT: WASTE WATER TREATMENT PLANT UPGRADE

DATE: 2013 JUN 27 10:00:00 AM

SANITARY AND FUEL OIL SYSTEM P & ID



System Tag : Sanitary System

These sequences are not apparent to any page on the plc user interface

- 1.1 Drinkable water Pump to operate on hardwire pressure controller. Pump on at 275kPa off at 413kPa
- 1.2 At high raw sewage or screened sewage tank level, Drinkable water Pump locked out. See item 1.5 for reset
Alarm from process P.L.C control panel via network.
At high raw sewage or screened sewage tank level, Outside red lamp on.
- 1.3 At 10 % water tank level, Drinkable water pump locked out. Alarm low water (low drinkable water lamp).
See item 1.5 for reset
- 1.4 At 90% water tank level indicate full tank by horn pulse.
- 1.5 Drinkable water pump auto reset on time delay, after alarm conditions corrected. Initial set point min
- 1.6 Sanitary lift station pump to cycle on level switch (hard wire) C.M.S on mezzanine (with on-off-auto selector)
- 1.7 At high sump, level alarm on CP1 (high sump pump fail, red lamp).

System Tag : FO System

System sequences of fuel System.

- 1.1 Fuel pump to operate lead/standby. Pumps to alternate on total run-time duty cycle.
- 1.2 Fuel pump status P19S/P20S. In the event of lead pump failure, auto-change to standby pump and failure indication. Fuel system failure lamp on. Alarm on PanelView300.
- 1.3 In the event of the lead pump and standby pump failure, failure indication. Signal sent to process P.L.C auto dialer.
- 1.4 Lead Fuel pump cycles to maintain day tank fuel level. Pump starts at FOTK2.2LLC and stops at FOTK2.2HLC.
- 1.5 Indicate low Fuel alarm for day tank fuel level at FOTK2.2LLA Alarm and Signal sent to process P.L.C auto dialer.
- 1.6 FOTK2.2LAH to indicate Fuel in dike. In the event of Fuel presence in dike, pumps locked out. Signal sent to process P.L.C auto dialer.

NOTE:

THESE SCHEMATICS ARE FROM THE ORIGINAL CONTRACT, REFER TO MECHANICAL SEQUENCE OF OPERATION AND DRAWING FOR ADDITIONAL EQUIPMENT AND OPERATION.

No.	Issue	Date
1	60% REVIEW SUBMISSION	2013-MAR-8
2	ISSUED FOR TENDER	2013-APR-10
3	RELEASED FOR CONSTRUCTION	2013-JUN-27



No.	Revision	Ckd. By	Date

PERMIT OF PRACTICE EXP SERVICES INC.	
Signature	<i>R.A. Porter</i>
Date	2013/JUN/27
PERMIT NUMBER: P483 NT/NU Association of Professional Engineers and Geoscientists .	

RELEASED FOR CONSTRUCTION

	Const. North
	Drawn By: TAW
	Dwg. Standards Ckd. By: PD
	Designed By: DEB
Date Printed	Dwg. Design Ckd. By: JFP

exp Services Inc.
t: +1.613.688.1899 | f: +1.613.225.7330
2650 Queensview Drive, Unit 100
Ottawa, ON K2B 8H6
CANADA
www.exp.com



- BUILDINGS • EARTH & ENVIRONMENT • ENERGY •
- INDUSTRIAL • INFRASTRUCTURE • SUSTAINABILITY •

Project Title	
WASTE WATER TREATMENT PLANT UPGRADE PANGNIRTUNG, NU	
Dwg. Title	
SANITARY AND FUEL OIL SYSTEM P & ID	
Project No. OTT-00204430-A0	
Dwg. No. E2636-1	Rev. No. 0
Scale	
NOT TO SCALE This drawing is not to be scaled	