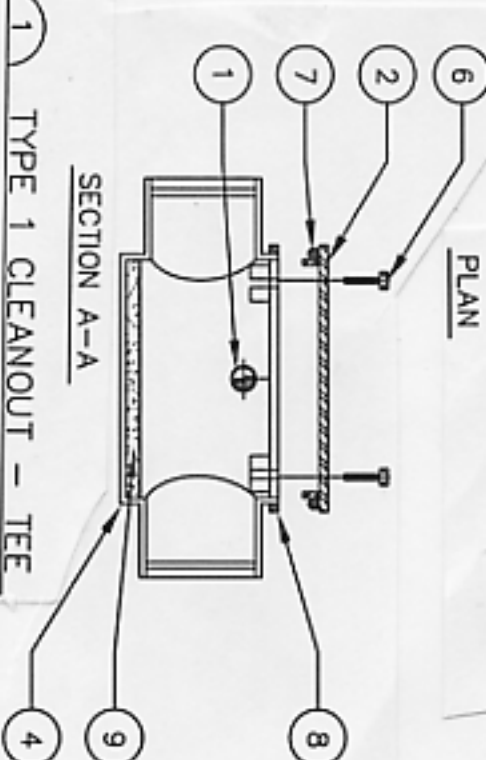


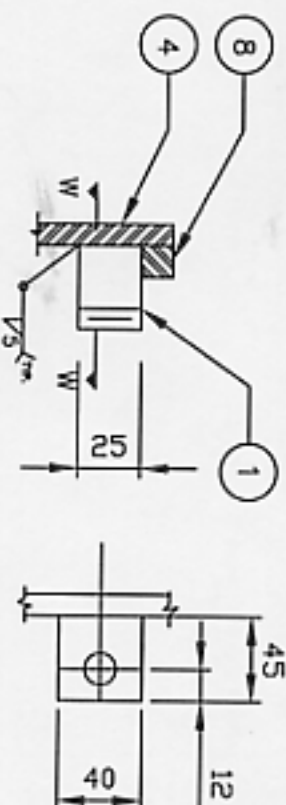
NOTE:
1. O.D. TO BE SIZED BY CONTRACTOR



1) TYPE 1 CLEANOUT - TEE

KEY TO NUMBERED PARTS:

- 1 25 N.P.T. HALF COUPLING AND PLUG
- 2 FABRICATED CLEANOUT COVER FROM 6 TH PLATE CONTINUOUS BUTT WELDED AND HOT DIPPED GALV. AFTER FABRICATION
- 3 BOLT LUGS TAPPED 12 NC
- 4 FABRICATED CLEANOUT BODY FROM 6 TH PLATE CONTINUOUS BUTT WELD AND HOT DIPPED GALV. AFTER FABRICATION
- 5 SCHEDULE 40 STEEL - NIPPLE VICTAULIC GROOVED (SIZE TO MATCH PIPE SIZE)
- 6 12 NC X 73 LONG CAD PLATED HEX HEAD SCREW AND WASHER TO FIT COVER
- 7 20K ONE PIECE SOFT RUBBER GASKET O RING STRETCH TO FIT COVER
- 8 12 SQ. ROD RIM
- 9 CEMENT MORTAR BENCHING SUPPLIED AND INSTALLED BY INSTALLING CONTRACTOR



2) BOLT & LUG DETAIL

NOTES:

1) SEE DRAWING A-1 FOR GENERAL ACCESS VAULT NOTES.

RESOLUTE BAY UTILIDOR

RESOLUTE BAY MANHOLE

CLEANOUT TYPE 1 - TEE

DESIGN BY:

DATE: 05.06.28

DRAWN BY:

SCALE: NTS

REV NO:

PF

APPROVED BY: LGM

DWG NO: A-12

0

A. D. Williams
Engineering Inc.
Consulting Engineers
PROJECT NO. 0713.10



FOR ESTIMATING PURPOSES ONLY