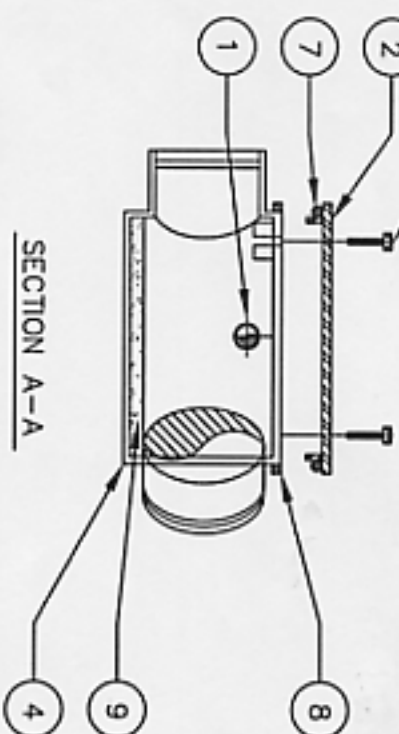


NOTE:
1. O.D. TO BE SIZED BY CONTRACTOR

PLAN

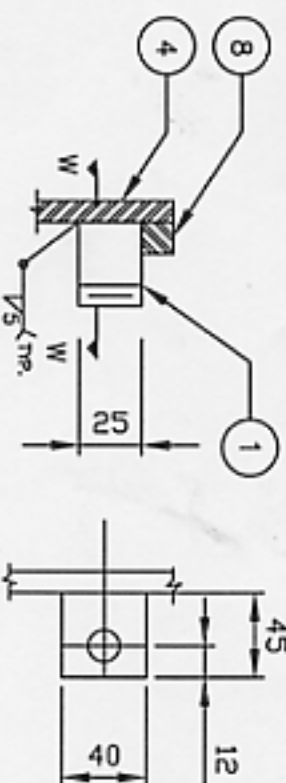


SECTION A-A

1) TYPE 1 CLEANOUT - WYE

KEY TO NUMBERED PARTS:

- 1 25 N.P.T. HALF COUPLING AND PLUG
- 2 FABRICATED CLEANOUT COVER FROM 6 TH PLATE CONTINUOUS BUTT WELDED AND HOT DIPPED GALV. AFTER FABRICATION
- 3 BOLT LUGS TAPPED 12 NC
- 4 FABRICATED CLEANOUT BODY FROM 6 TH PLATE CONTINUOUS BUTT WELD AND HOT DIPPED GALV. AFTER FABRICATION
- 5 SCHEDULE 40 STEEL - NIPPLE VICTAULIC GROOVED (SIZE TO MATCH PIPE SIZE)
- 6 12 NC X 73 LONG CAD PLATED HEX HEAD SCREW AND WASHER TO FIT COVER
- 7 20K ONE PIECE SOFT RUBBER GASKET O RING STRETCH
- 8 12 SQ. ROD RIM
- 9 CEMENT MORTAR BENCHING SUPPLIED AND INSTALLED BY INSTALLING CONTRACTOR



SECTION W-W

2) BOLT & LUG DETAIL

NOTES:

1) SEE DRAWING A-1 FOR GENERAL ACCESS VAULT NOTES.

RESOLUTE BAY UTILIDOR

RESOLUTE BAY, NEWAUF

CLEANOUT

TYPE 2 - WYE



A. D. Williams
Engineering Inc.
Consulting Engineers
PROJECT NO. 073110

4403-47 Street
P.O. Box 1329
Yellowknife, NT X1A 2P2
Ph. (867) 873-2385
Fax. (867) 873-2547

DESIGN BY:
DRAWN BY: PF
APPROVED BY: LGM

DATE: 05.06.28
SCALE: NTS
DWG NO: A-13
REV NO: 0

FOR ESTIMATING PURPOSES ONLY