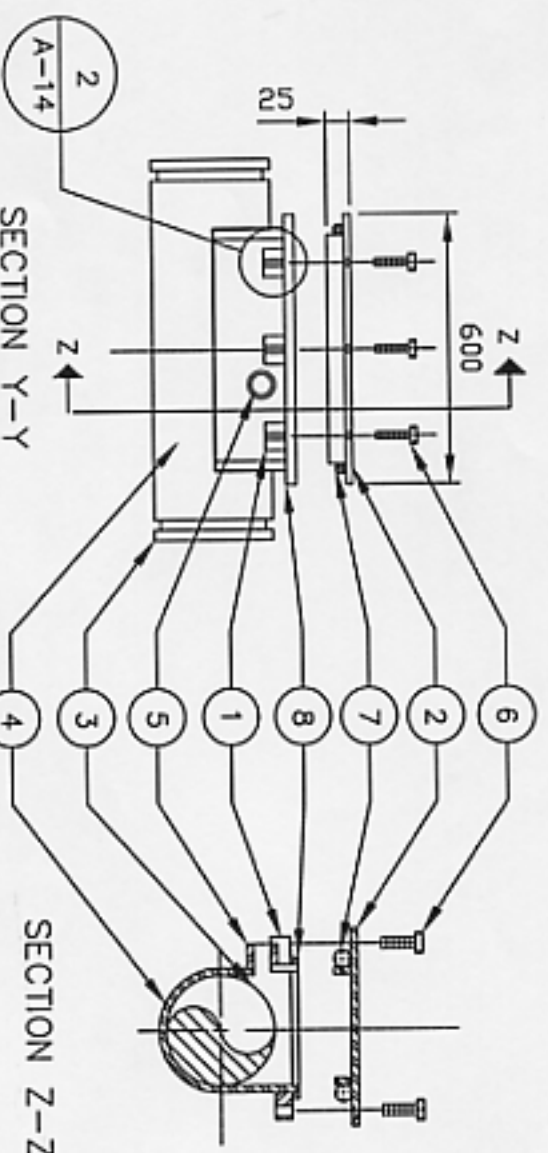


PLAN

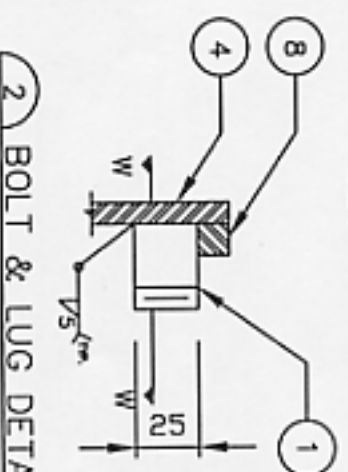
KEY TO NUMBERED PARTS:

- ① BOLT LUGS TAPPED 12 NC
- ② FABRICATED CLEANOUT COVER FROM 6 TH PLATE CONTINUOUS BUTT WELDED AND HOT DIPPED GALV. AFTER FABRICATION
- ③ SCHEDULE 40 STEEL - NIPPLE VICTAULIC GROOVED (SIZE TO MATCH PIPE SIZE)
- ④ FABRICATED CLEANOUT BODY FROM 6 TH PLATE CONTINUOUS BUTT WELD AND HOT DIPPED GALV. AFTER FABRICATION
- ⑤ 25 N.P.T. HALF COUPLING AND PLUG
- ⑥ 12 NC X 73 LONG CAD PLATED HEX HEAD SCREW AND WASHER
- ⑦ 20K ONE PIECE SOFT RUBBER GASKET O RING STRETCH TO FIT COVER
- ⑧ 12 SQ. ROD RIM



SECTION Z-Z

1) TYPE 2 CLEANOUT



SECTION W-W

2) BOLT & LUG DETAIL

NOTES:

1) SEE DRAWING A-1

FOR GENERAL ACCESS

VAULT NOTES.

FOR ESTIMATING PURPOSES ONLY

RESOLUTE BAY UTILIDOR

RESOLUTE BAY MANHOLE

CLEANOUT  
TYPE 2



**A. D. Williams**  
**Engineering Inc.**  
Consulting Engineers

PROJECT NO. 072110

4403-47 Street  
P.O. Box 1029  
Yonkers, NY 10461  
Tel. (914) 953-2383  
Fax. (914) 953-2347

Edmonston Office  
Tel. (703) 424-2353  
Fax. (703) 423-1520

DESIGN BY:

DRAWN BY:

PF

DATE: 05.06.28

SCALE: NTS

DWG NO:

REV NO:

APPROVED BY:

LGM

A-14

0