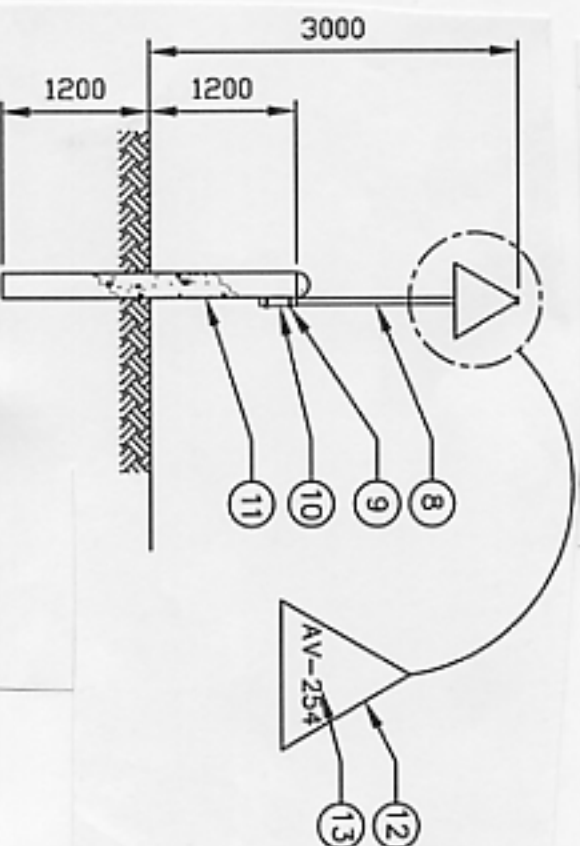


1 PIPE SUPPORT DETAIL



2 BUMPER POST DETAIL

KEY TO NUMBERED PARTS:

- 1 WATER MAIN - HOT DIPPED GALV. STEEL PIPING
- 2 75mm DIA x 12 TH PLATE
- 3 20mm x 15 'O' BOLT
- 4 20 TH THICK PLATE DRILLED & TAPPED
- 5 100mm DIA. SCHEDULE 40 STEEL PIPE
- 6 150 x 150 x 12 TH PLATE
- 7 2 - 15mm DIA. HOLES
- 8 50mm DIA. GALV. STEEL PIPE MAST - 4 - 11mm DIA. BOLT HOLES
- 9 2 - 9mm DIA. x 89mm LONG GALV. BOLTS THROUGH SLEEVE AND MAST.
- 10 65mm DIA. STEEL SLEEVE WELDED TO POST. c/w 2 - 11mm DIA. DRILLED HOLES
- 11 200mm DIA. STEEL PIPE POST EPOXY COATED AND FILLED WITH CONCRETE.
- 12 3mm TH STEEL PLATE SIGN PAINTED RED c/w 2 - 11mm DIA DRILLED BOLT HOLES. SIGN SECURED TO MAST WITH 2 - 9mm DIA x 76 LG. GALV. BOLTS.
- 13 WHITE LETTERING, 100mm HIGH. LETTERING TO MATCH ACTUAL ACCESS VAULT NUMBERING.

NOTES:

- 1) SEE DRAWING A-1 FOR GENERAL ACCESS VAULT NOTES
- 2) HEIGHT TO BE 100mm FOR SANITARY OR WATER IN SEPARATE AV, 500mm FOR WATER IN COMMON AV.
- 3) POST, SLEEVE AND MAST TO BE PAINTED RED AFTER FABRICATION
- 4) 4 BOLLARDS REQUIRED PER ACCESS VAULT. ONE BOLLARD PER ACCESS VAULT TO INCLUDE MAST AND SIGN.

RESOLUTE BAY UTILIDOR

RESOLUTE BAY, NEWCASTLE

MISCELLANEOUS ACCESS VAULT DETAILS



**A. D. Williams**  
Engineering Inc.  
Consulting Engineers

PROJECT NO. 0751.10

44003-47 Street  
P.O. Box 1329  
Vancouver, BC V6T 2G2  
Tel. (604) 873-2395  
Fax. (604) 873-2547

Education Office  
Tel. (780) 424-2393  
Fax. (780) 424-1530

DESIGN BY:

DATE: 05.06.28

DRAWN BY:

PF

SCALE: NTS

REV NO:

APPROVED BY:

LGM

A-15

0

FOR ESTIMATING PURPOSES ONLY