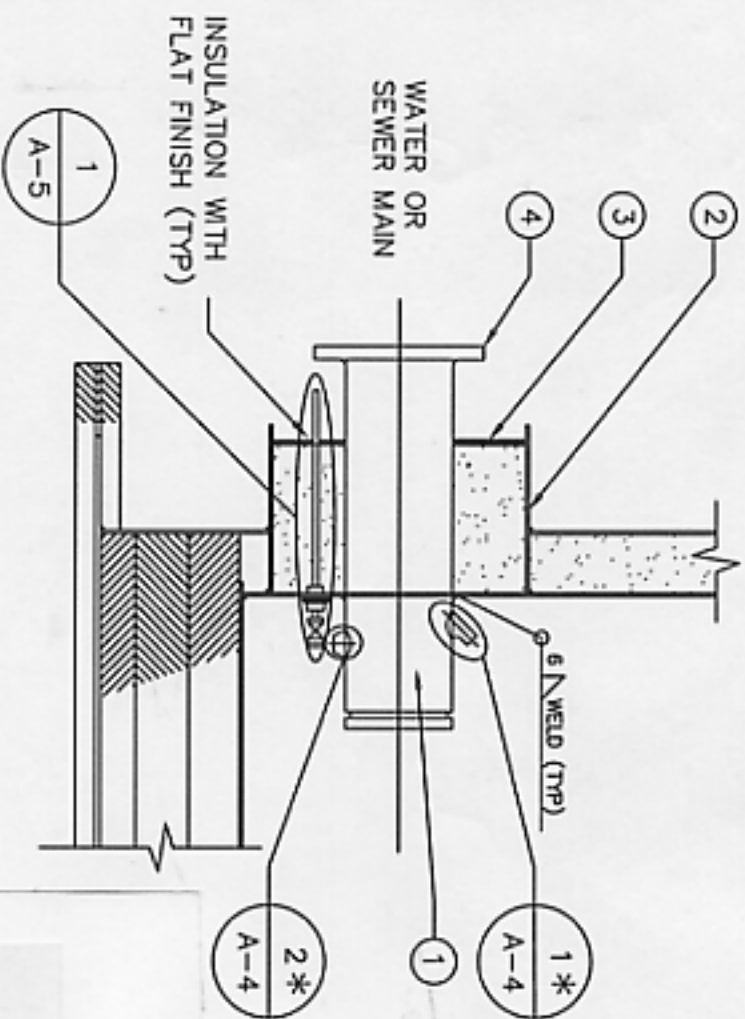


KEY TO NUMBERED PARTS:

- ① SCHEDULE 80 STEEL PIPE SPOOL PIECE
- ② STEEL RING SECTION WELDED TO ACCESS VAULT OUTER WALL - 6mm TH x 407mm O.D. FOR 150 DIA, 470mm O.D. FOR 200 DIA, 535mm O.D. FOR 250 DIA
- ③ APPLY SILICONE CAULKING AT ALL PIPE ENTRY LOCATIONS.
- ④ WELDED STEEL SLIP-ON FLANGE, SIZED TO FIT



* REQUIRED ONLY ON WATER MAINS

① WALL PENETRATION DETAIL

NOTES:

- 1) SEE DRAWING A-1 FOR GENERAL ACCESS VAULT NOTES.
- 2) AFTER INSTALLING DRAINS, TEST VALVE ASSEMBLY PRIOR TO INSTALLING FLANGE INSULATION

RESOLUTE BAY UTILIDOR

RESOLUTE BAY, MANHOLE

ACCESS VAULT DETAIL

DESIGN BY:

DATE: 05.06.28

DRAWN BY: PF

SCALE: NTS

REV NO:



A. D. Williams
Engineering Inc.
Consulting Engineers

PROJECT NO. 0773.10

4403-47 Street
P.O. Box 1029
Yellowknife, NT X1A 2P2
Tel. (867) 873-2300
Fax. (867) 873-2347
Education Office
Tel. (780) 424-2313
Fax. (780) 424-1520

APPROVED BY: LGM

A-3

0

FOR ESTIMATING PURPOSES ONLY