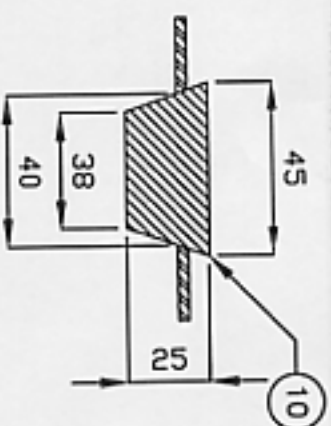
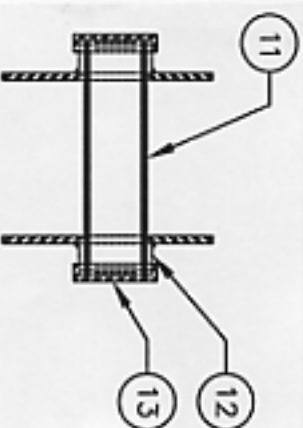


1 TEST/DRAIN VALVE DETAIL



2 FROST PLUG DETAIL



3 WALL SLEEVE DETAIL

KEY TO NUMBERED PARTS:

- 1 6 THICK STEEL PLATE ACCESS VAULT WALL
- 2 12 DIA. GALV. ST. NIPPLE
- 3 12 DIA. PLUG
- 4 12 DIA. SCREWED BALL VALVE
- 5 12 DIA. GALV. ST. COUPLING
- 6 12 DIA. GALV. ST. PIPE
- 7 DRILL THROUGH SHOP CAST POLYURETHANE INSULATION
- 8 FLANGE INSULATION KIT BY OTHERS
- 9 SHOP CAST POLYURETHANE INSULATION
- 10 FROST PLUG TO BE MADE FROM SOLID BLACK RUBBER DRIVEN TIGHTLY INTO HOLE.
- 11 37 DIA RIGID PVC - OIL COAT SURFACE PRIOR TO INSULATING
- 12 50 DIA. SCHEDULE 40 NIPPLE
- 13 50 DIA. CAP

NOTES:

- 1) SEE DRAWING A-1 FOR GENERAL ACCESS VAULT NOTES.
- 2) PROVIDE FROST PLUG IN FLOOR PLATE AND SUMP HOLE.
- 3) PLUG TO HAVE A 10mm PROJECTION ABOVE FLOOR AFTER BEING PLACED TIGHTLY INTO HOLE.
- 4) 2 WALL SLEEVES REQUIRED PER ACCESS VAULT.

**RESOLUTE BAY UTILIDOR**

RESOLUTE BAY, MANHOLE

**MISCELLANEOUS  
ACCESS VAULT DETAILS**



**A.D. Williams  
Engineering Inc.**  
Consulting Engineers

PROJECT NO. 0721.10

14903-47 Street  
P.O. Box 1329  
Yellowknife, NT X1A 2P2  
Tel. (867) 873-2335  
Fax. (867) 873-2547  
Construction Office  
Tel. (780) 425-2332  
Fax. (780) 425-1520

DESIGN BY:

DRAWN BY:

PF

DATE: 05.06.28

SCALE: NTS

DWG NO:

REV NO:

APPROVED BY:

LGM

A-5

0

FOR ESTIMATING PURPOSES ONLY