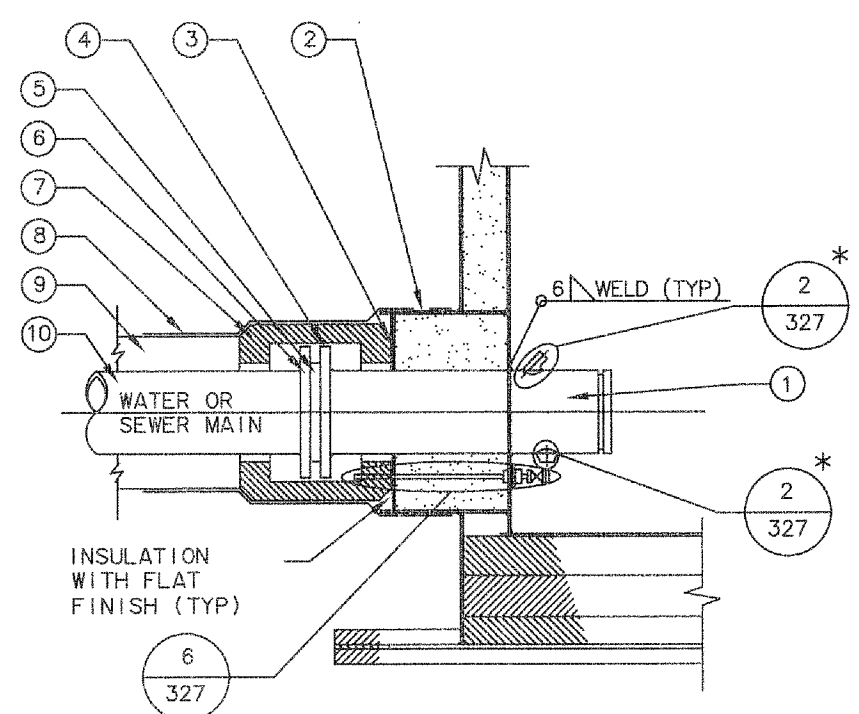


ACCESS VAULT - GENERAL NOTES

- 1) CONSTRUCT ACCESS VAULTS FROM 6mm STEEL PLATE WITH CONTINUOUS (FULLY) WELDED CONSTRUCTION. FABRICATE COMPLETELY PRIOR TO EPOXY COATING. WELDING AND FABRICATION TO CSA W59-1977 & W47-1-1973
- 2) ALL STEEL TO BE CSA G40.21 TYPE 260W OR ASTM A36-62T.
- 3) ALL PIPING INSIDE THE ACCESS VAULT TO BE PREFABRICATED TO THE LIMITS SHOWN ON THE TYPICAL SECTION AND AS SHOWN ON THE LAYOUT PLANS.
- 4) PROVIDE PIPE ENTRY SPOOL PIECES, LADDER MOUNTING STUDS & ALL OTHER ACCESS VAULT PARTS, ETC., AS REQUIRED. PRE-WELDED IN PLACE PRIOR TO SANDBLASTING AND EPOXY COATING.
- 5) ALL PREFABRICATED STEEL PARTS OF THE ACCESS VAULT (EXCEPT TOP PLATE HATCH AND LADDER) SHALL BE SANDBLASTED AND EPOXY COATED INSIDE AND OUTSIDE AS PER SPECIFICATIONS.
- 6) TOP PLATE, HATCH, HINGE, & LADDER SHALL BE HOT DIPPED GALVANIZED TO CSA G164 MINIMUM 610g/m².
- 7) ALL NUTS, BOLTS, WASHERS, SCREWS ETC. SHALL BE ZINC PLATED OR CADMIUM PLATED.
- 8) FLANGE INSULATION KITS AND STYROFOAM ACCESS VAULT BASE INSULATION SUPPLIED AS PART OF THE ACCESS VAULT.
- 9) HYDRANT, AND LINK SEAL JOINT TO BE SHIPPED SEPARATELY (INSIDE ACCESS VAULT).
- 10) PRIOR TO SHIPPING, ALL FACES OF FLANGES PROJECTING OUTSIDE THE ACCESS VAULT SHALL PROTECTED BY 5/8" THICK PLYWOOD COVER FIXED BY 4 BOLTS.
- 11) PROVIDED WITH EACH ACCESS VAULT SHALL BE FOUR 200mm DIA STEEL BUMPER POST, ONE TO INCLUDE SIGN.
- 12) PAINT SPECIFICATIONS:
 - SANDBLAST SSPC SP10
 - 2 COATS OF INTERGARD EX HB FROM INTERNATIONAL, 16mm DRY THICKNESS.
 - COLOURS: OUTSIDE - GREY
 - INSIDE - BEIGE
- 13) ALL MEASUREMENTS ON DETAILS ARE IN mm UNLESS OTHERWISE INDICATED

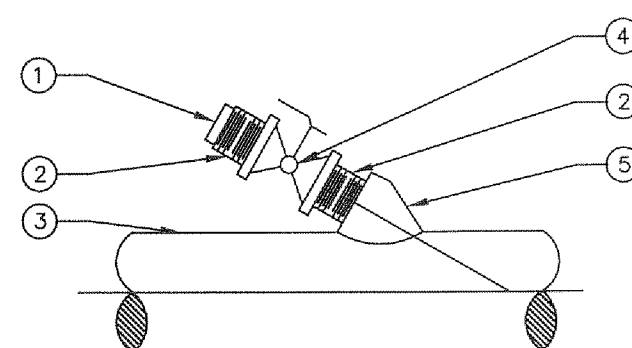
1 ACCESS VAULT GENERAL NOTES



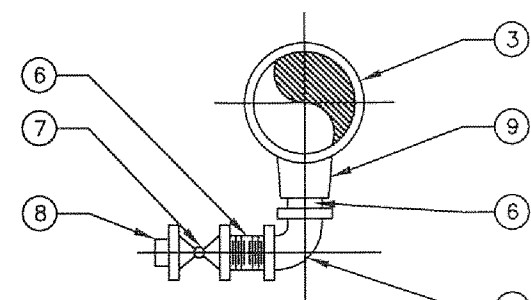
* REQUIRED ONLY ON WATER MAINS

- KEY TO NUMBERED PARTS:
- 1 SCHEDULE 80 STEEL PIPE SPOOL PIECE.
 - 2 STEEL RING SECTION WELDED TO ACCESS VAULT OUTER WALL - 6mm THICK x 407mm O.D. FOR 150 DIA, 470mm O.D. FOR 200 DIA, 535mm O.D. FOR 250 DIA.
 - 3 APPLY SILICONE CAULKING AT ALL PIPE ENTRY LOCATIONS.
 - 4 WELDED STEEL SLIP-ON FLANGE, SIZED TO FIT.
 - 5 200 mm #1/2" x 150 mm # (I.P. SIZE) DR 17 PE/50 mm # DR 17 PE STUB END, ASA 125# CAST IRON (DUCTILE) METAL BACKUP FLANGE, CADMIUM PLATED NUTS, BOLTS & WASHERS, STUB END GASKET, SIZED TO FIT.
 - 6 WELDED STEEL SLIP-ON FLANGE, SIZED TO FIT.
 - 7 FLANGE INSULATION KIT, 290 mm OD FOR 50 mm # PE PIPE, 470 mm OD FOR 200 mm # PE PIPE, 535 mm OD FOR 250 mm # PE PIPE, (MASTIC COAT INNER SURFACES) AND FRP COATING.
 - 8 RAYCHEM THERMALOAD HEAT SHRINK TAPE, 2 LAYER, MIN. 50% OVERLAP EACH WRAP.
 - 9 POLYURETHANE INSULATION HALVES OR PE PIPE PRE-INSULATION TO SUIT PIPE SIZES.
 - 10 HDPE PIPE.

4 ACCESS VAULT DETAIL WALL PENETRATION WATER OR SEWER MAINS



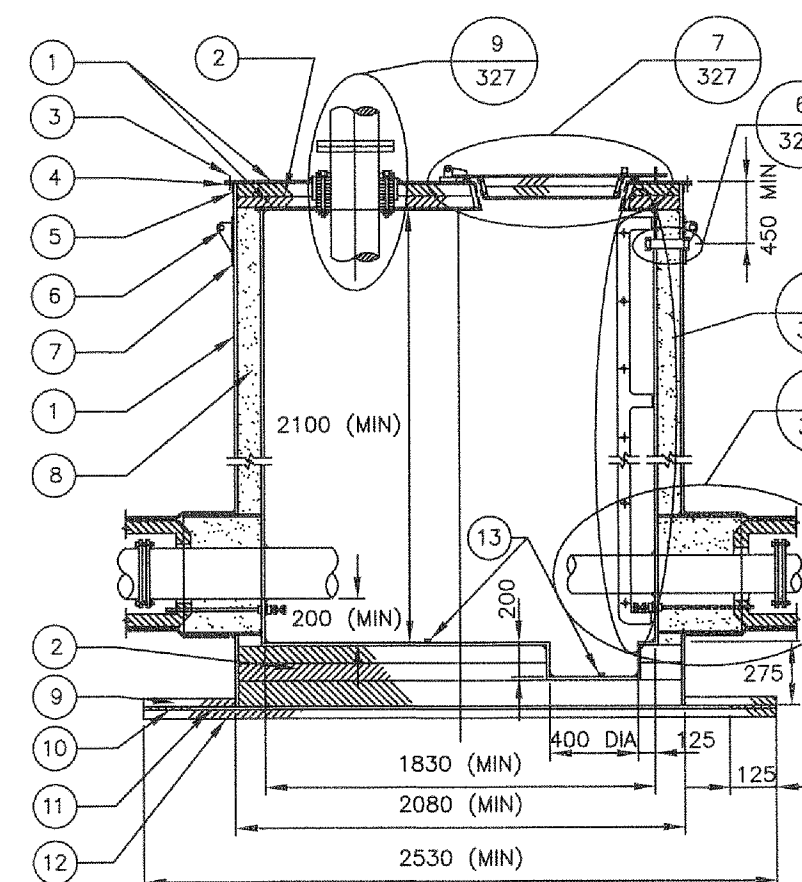
LATEROLET CONNECTION



WATER MAIN DRAIN

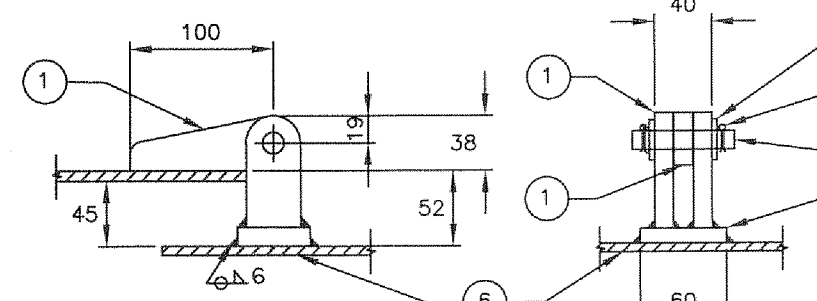
- KEY TO NUMBERED PARTS:
- 1 50mm DIA. N.P.T. PLUG
 - 2 50mm DIA. N.P.T. NIPPLE
 - 3 WATER MAIN - HOT DIPPED GALV. STEEL PIPING
 - 4 50mm DIA. BALL VALVE
 - 5 50mm DIA. LATEROLET
 - 6 25mm DIA. N.P.T. SHORT NIPPLE
 - 7 25mm DIA. BALL VALVE
 - 8 25mm DIA. N.P.T. PLUG
 - 9 25mm DIA. N.P.T. THEODOLET
 - 10 25mm DIA. 90 DEGREE ELBOW N.P.T. FEMALE

2 LATEROLET AND DRAIN DETAILS

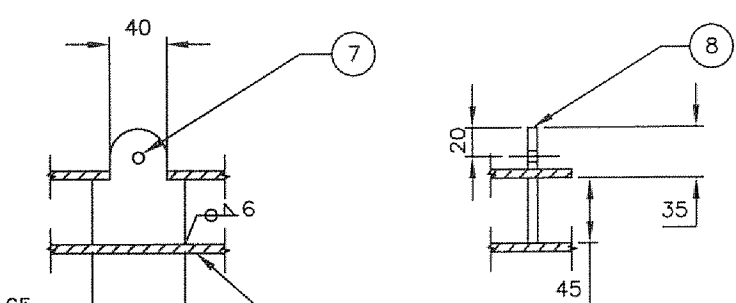


- KEY TO NUMBERED PARTS:
- 1 6 THICK STEEL PLATE ACCESS VAULT CONSTRUCTION
 - 2 URETHANE SHEET INSULATION CUT TO SIZE
 - 3 12 CAD. PLATED STEEL BOLT, NUT, WASHER 32 MIN AT EQUAL SPACING
 - 4 3 X 5 COMPRESSIBLE NEOPRENE RUBBER GASKET
 - 5 10 THICK 50 X 50 MIN. ANGLE WELDED FULL LENGTH
 - 6 LIFTING LUGS - TWO PER ACCESS VAULT, 150 X 75 X 12 THICK WITH 38 DIA LIFTING EYE
 - 7 REINFORCING PLATE 200 X 200 X 12 CURVED TO EXTERIOR WALL RADIUS
 - 8 FORMED IN PLACE INSULATION (URETHANE)
 - 9 38 THICK STYROFOAM CUT TO MATCH EXTERIOR WALL RADIUS
 - 10 FILLER PIECE - 10 THICK INSULATION
 - 11 10 THICK STEEL BASE PLATE
 - 12 38 THICK INSULATION
 - 13 FROST PLUG

3 ACCESS VAULT DETAIL



COVER HINGE DETAIL

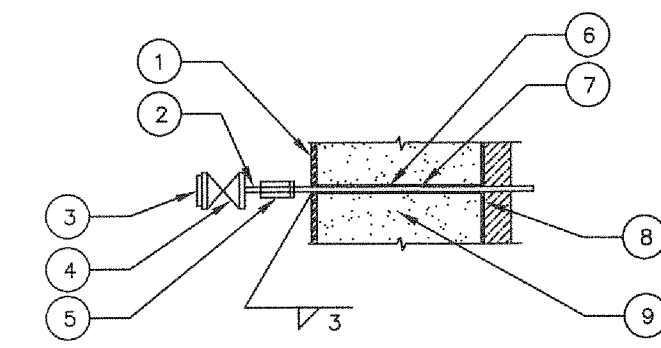


LOCK HASP DETAIL

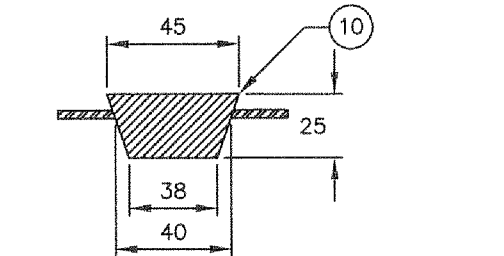
- KEY TO NUMBERED PARTS:
- 1 13 HOT DIPPED GALV. STEEL PLATE
 - 2 CAD. PLATED WASHER (TYP.)
 - 3 COLLAR PIN (TYP.)
 - 4 12.7 DIA. CAD. PLATED PIN
 - 5 12 TH STEEL BAR UNDER HINGES
 - 6 6 TH STEEL PLATE ACCESS VAULT CONSTRUCTION
 - 7 8mm DIA. HOLE DRILLED FOR PADLOCK
 - 8 6 TH GALV. STEEL STAPLE

- NOTES:
- 1) TWO HINGES ARE REQUIRED PER COVER.
 - 2) HINGES TO BE SPACED AT 400mm APART

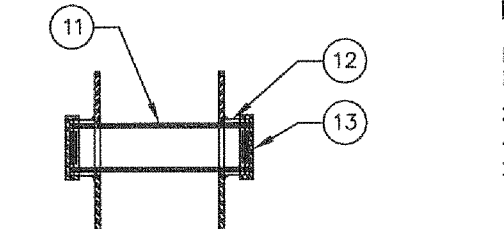
5 ACCESS VAULT COVER MISCELLANEOUS DETAILS



TEST/DRAIN VALVE DETAIL



FROST PLUG DETAIL

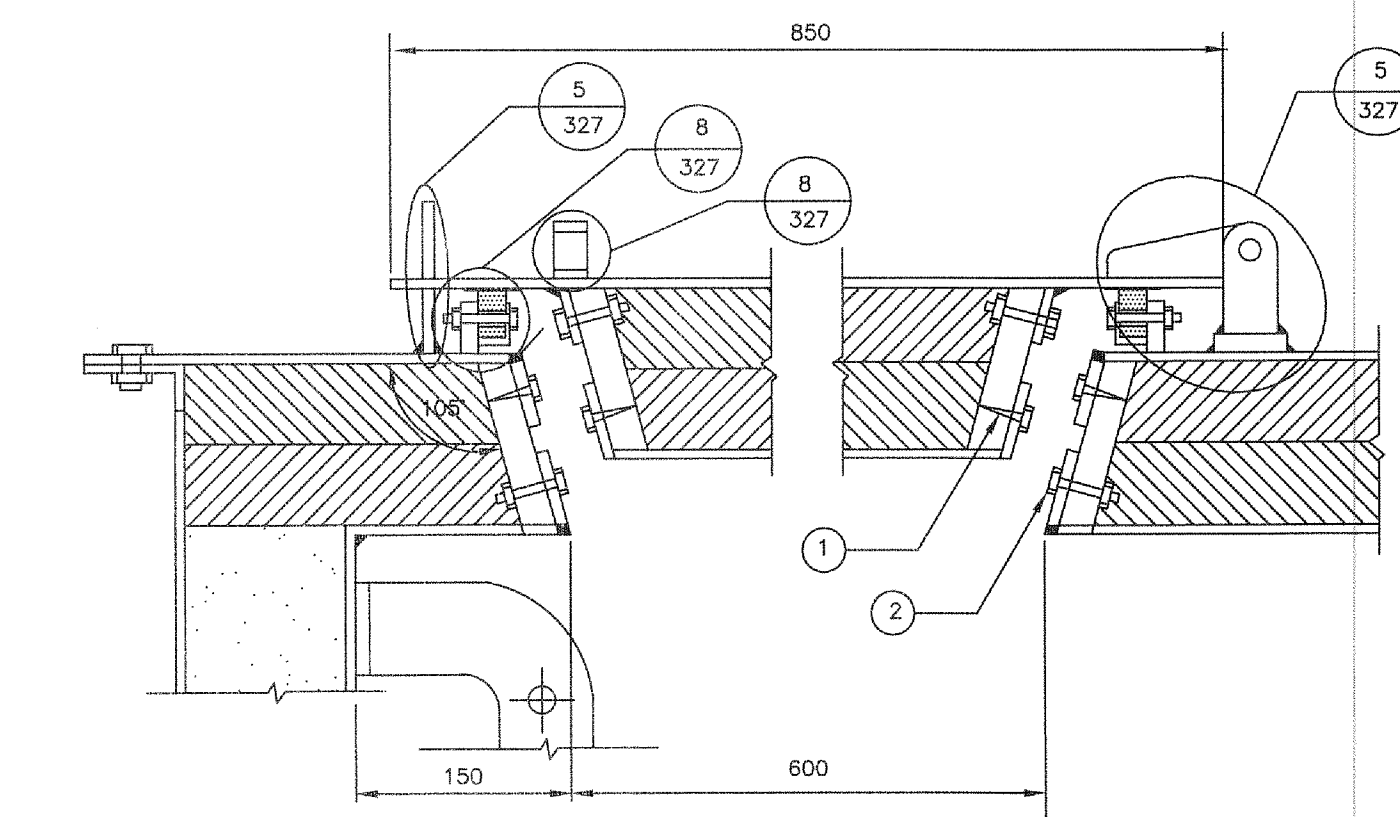


WALL SLEEVE DETAIL

- KEY TO NUMBERED PARTS:
- 1 6 THICK STEEL PLATE ACCESS VAULT WALL
 - 2 12 DIA. GALV. ST. NIPPLE
 - 3 12 DIA. PLUG
 - 4 12 DIA. SCREWED BALL VALVE
 - 5 12 DIA. GALV. ST. COUPLING
 - 6 12 DIA. GALV. ST. PIPE
 - 7 DRILL THROUGH SHOP CAST POLYURETHANE INSULATION
 - 8 FLANGE INSULATION KIT BY OTHERS
 - 9 SHOP CAST POLYURETHANE INSULATION
 - 10 FROST PLUG TO BE MADE FROM SOLID BLACK RUBBER DRIVEN TIGHTLY INTO HOLE.
 - 11 37 DIA RIGID PVC - OIL COAT SURFACE PRIOR TO INSULATING
 - 12 50 DIA. SCHEDULE 40 NIPPLE
 - 13 50 DIA. CAP

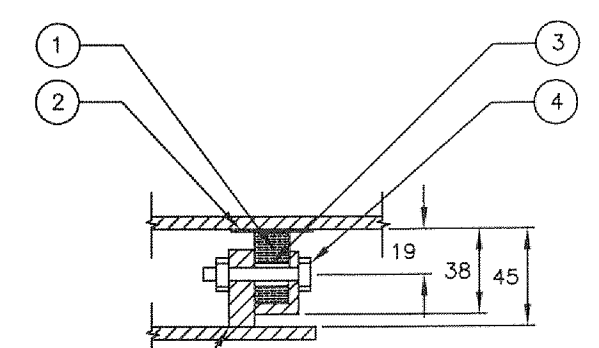
- NOTES:
- 1) PROVIDE FROST PLUG IN FLOOR PLATE AND SUMP HOLE.
 - 2) PLUG TO HAVE A 10mm PROJECTION ABOVE FLOOR AFTER BEING PLACED TIGHTLY INTO HOLE.
 - 3) 2 WALL SLEEVES REQUIRED PER ACCESS VAULT.

6 MISCELLANEOUS ACCESS VAULT DETAILS

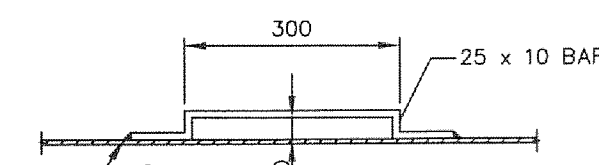


- KEY TO NUMBERED PARTS:
- 1 #12-30 PAN HEAD SHEET METAL SCREWS AT 100 SPACING
 - 2 6 GALV. BOLTS, NUT, & WASHER AT 100 SPACING

7 ACCESS VAULT COVER DETAIL



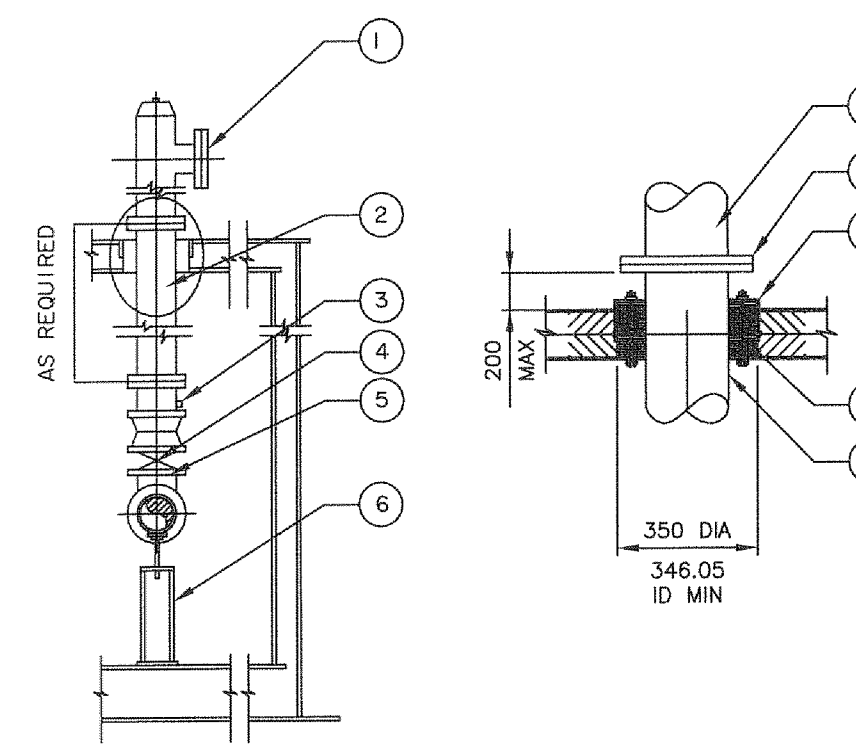
COVER SEAL DETAIL



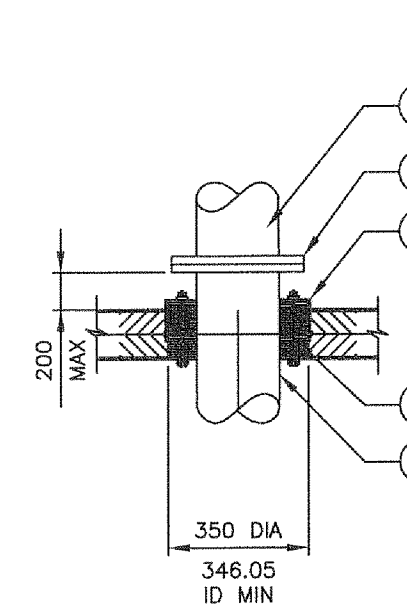
COVER HANDLE DETAIL

- KEY TO NUMBERED PARTS:
- 1 37 DIA METKA IND. TG-155 GASKET
 - 2 25 WIDE TEFLON TAPE APPLIED TO DOOR
 - 3 6.5 X 17 SPACER
 - 4 6 X 31 CAD. PLATED STEEL BOLT 150 SPACING

8 ACCESS VAULT COVER MISCELLANEOUS DETAILS



FIRE HYDRANT DETAIL

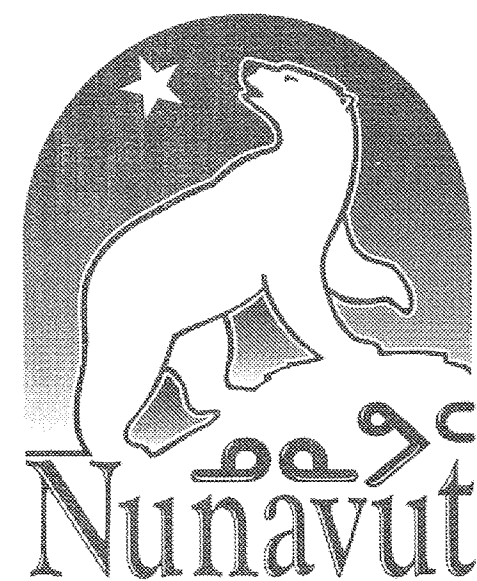


HYDRANT PENETRATION DETAIL

- KEY TO NUMBERED PARTS:
- 1 200mm CRANE McAVITY M-67 "IN-LINE" FIRE HYDRANT
 - 2 FIRE HYDRANT BARREL
 - 3 VALVE & CAP TO MATCH HYDRANT DRAIN PORT
 - 4 200 mm LUG TYPE BUTTERFLY VALVE COMPLETE WITH OPERATOR
 - 5 FLANGE TEE 1080 AFA - DIA. TO MATCH MAIN AND HYDRANT SIZE
 - 6 PIPE SUPPORT, SEE DETAIL DWG A-15
 - 7 HYDRANT FLANGE
 - 8 350 DIA SCHEDULE 10 (364 I.D.) STEEL PIPE x 100 LONG WELDED TO ACCESS VAULT TOP PLATE
 - 9 THUNDER-LINE CORP LINK-DEAL MODEL LS-500-C (200X350) OR APPROVED EQUAL

9 FIRE HYDRANT DETAILS

No.	Issue	Date
01	ISSUED FOR TENDER	2013-MAR-25
02	REISSUED FOR TENDER	2013-OCT-25



No.	100% REVIEW	SLB	2013-MAR-04
	Revision	Ckd. By	Date

PERMIT OF PRACTICE
EXP SERVICES INC.

Signature: *S. Burden*

Date: *Oct 25/13*

PERMIT NUMBER: P483
NT/NU Association of Professional Engineers and Geoscientists

ISSUED FOR TENDER

Const. North

Drawn By: I. CRAWFORD

Dwg. Standards Ckd. By:

Designed By: A. ZARAD

Date Printed: Dwg. Design Ckd. By: S. BURDEN

exp Services Inc.
t: +1 613 888 1899 f: +1 613 225 7330
2650 Queensview Drive, Unit 100
Ottawa, ON K2B 8H6
CANADA

www.exp.com



- BUILDINGS • EARTH & ENVIRONMENT • ENERGY •
- INDUSTRIAL • INFRASTRUCTURE • SUSTAINABILITY •

Project Title

**NEW UTILIDOR DESIGN
RESOLUTE BAY, NU**

Dwg. Title

**STANDARD ACCESS
VAULT DETAILS**

Project No.	OTT-00206333-A0	Rev. No.	02
Dwg. No.	C-327		
Scale	NOT TO SCALE		