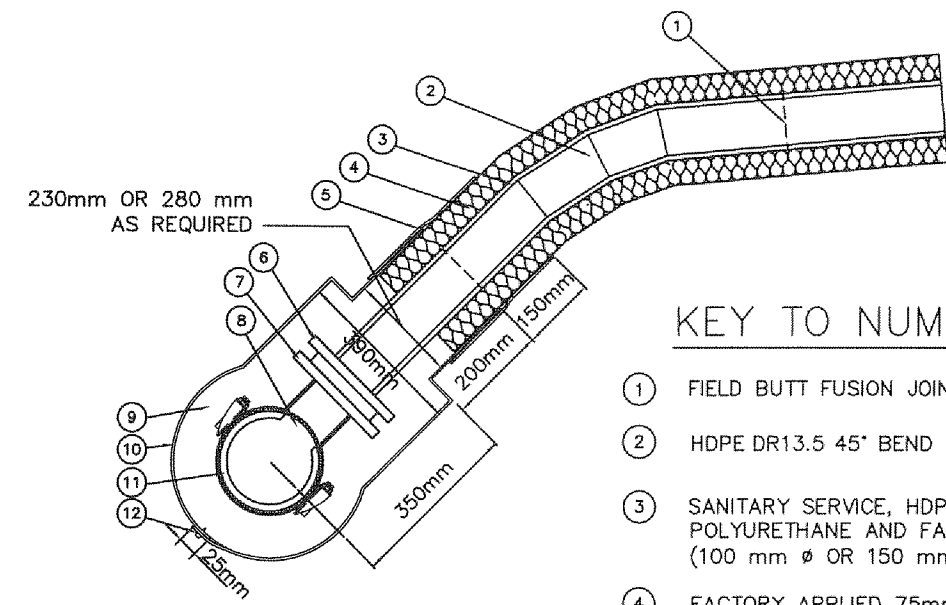


KEY TO NUMBERED PARTS:

- 1 FUSE TO EXISTING HDPE SEWER PIPE.

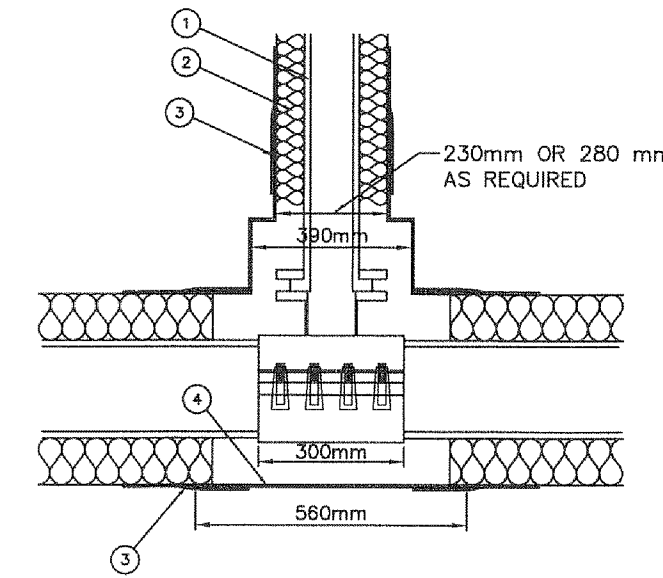
1 TYPICAL SANITARY SEWER SERVICE CONNECTION TO 1m FROM EXISTING BUILDING



KEY TO NUMBERED PARTS:

- 1 FIELD BUTT FUSION JOINT MADE BY QUALIFIED AND LICENSED JOINTING TECHNICIAN.  
2 HDPE DR13.5 45° BEND FACTORY MAN. 100 mm Ø OR 150 mm Ø AS REQUIRED.  
3 SANITARY SERVICE, HDPE IPS DR-13.5 WITH 75mm NOMINAL POLYURETHANE AND FACTORY INSTALLED JACKET. (100 mm Ø OR 150 mm Ø AS REQUIRED)  
4 FACTORY APPLIED 75mm NOM. POLYURETHANE INSULATION WITH POLYETHYLENE JACKET.  
5 HEAT SHRINK, 150mm OVERLAP ON SHELLS AND PIPE JACKET.  
6 DUCTILE IRON SLIP ON FLANGE SUITABLE FOR USE WITH HDPE PIPE.  
7 STAINLESS STEEL OUTLET SLEEVE. 100mm NOMINAL OUTLET SIZE. ROBAR 6626 C/W 16mm NC T304 STAINLESS STEEL FASTENERS.  
8 HOLE FOR SERVICE TO BE DRILLED IN MAIN WITH HOLE SAW.  
9 POLYURETHANE INSULATION FROM PORTABLE FOAM PACK.  
10 GALVANIZED SHEET STEEL FORM.  
11 SANITARY MAIN, HDPE PIPE DR13.5 150mm OR 200mm DIA. WITH 75mm NOMINAL POLYURETHANE AND FACTORY INSTALLED JACKET.  
12 No. 8 X 13mm CADMIUM PLATED SHEET METAL SCREWS.

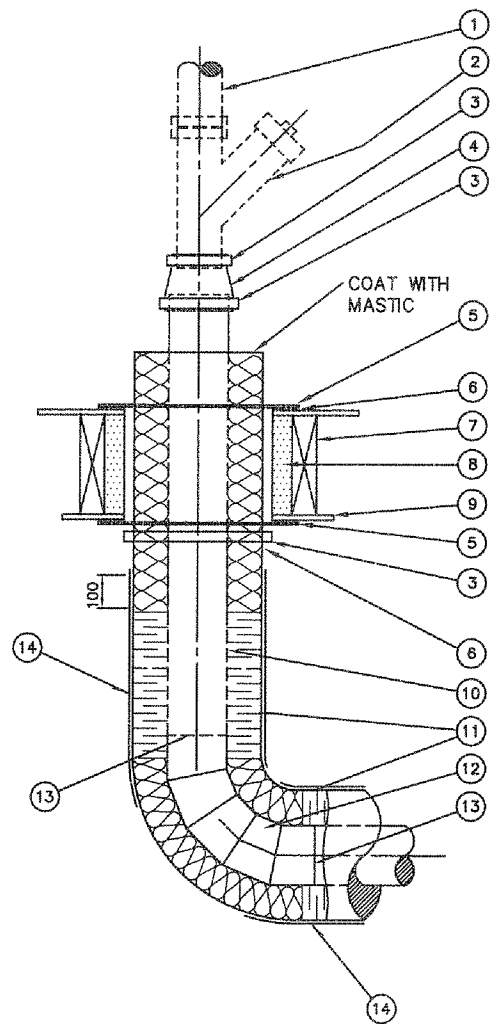
2 TYPICAL SEWER SERVICE CONNECTION AT MAIN



KEY TO NUMBERED PARTS:

- 1 SANITARY SERVICE, HDPE IPS DR-13.5 WITH 75mm NOMINAL POLYURETHANE AND FACTORY INSTALLED JACKET. (100 mm Ø OR 150 mm Ø AS REQUIRED)  
2 FACTORY APPLIED 75mm NOM. POLYURETHANE INSULATION WITH POLYETHYLENE JACKET.  
3 HEAT SHRINK, 150mm OVERLAP ON SHELLS AND PIPE JACKET.  
4 GALVANIZED SHEET STEEL FORM.

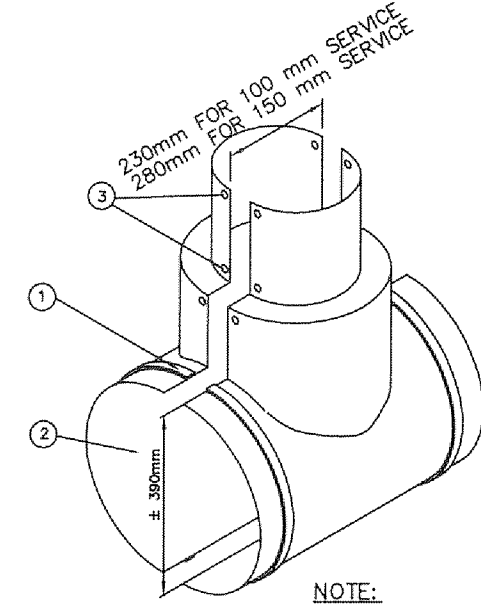
3 TYPICAL SEWER SERVICE STUB FRONT VIEW



KEY TO NUMBERED PARTS:

- 1 EXISTING 75mm DIA. ABS PIPE.  
2 75mm DIA. ABS CLEANOUT WITH THREADED PLUG AS REQUIRED.  
3 STAINLESS STEEL TRIDENT HAS 152 GEAR CLAMPS.  
4 100mm DIA x 75mm DIA FERNCO SERIES 1056-43 COUPLING. (SIZE TO SUIT FOR 150 mm Ø SERVICE)  
5 20mm PLYWOOD - GLUED AND SCREWED TO JOIST/STUDS AND HEADERS.  
6 CAULK WITH SILICON ALL AROUND.  
7 FLOOR JOIST - EXISTING.  
8 POLYURETHANE INSULATION FROM PORTABLE FOAM PACK.  
9 RESTORE SOFFIT TO ORIGINAL CONDITION.  
10 SANITARY SERVICE, HDPE IPS DR-13.5 WITH 75mm NOMINAL POLYURETHANE AND FACTORY INSTALLED JACKET. (100 mm Ø OR 150 mm Ø AS REQUIRED)  
11 POLYURETHANE HALF SHELLS CUT TO LENGTH (OR FIELD APPLIED FOAM), COATED WITH ASPHALT MASTIC AND HEAT SHRINK.  
12 LONG RADIUS 90° ELBOW WITH FACTORY APPLIED POLYURETHANE INSULATION WITH REINFORCED JACKET.  
13 FIELD BUTT FUSION JOINT MADE BY QUALIFIED AND LICENSED JOINTING TECHNICIAN.  
14 HEAT SHRINK, 150mm OVERLAP ON SHELLS AND PIPE JACKET.

4 TYPICAL SANITARY SEWER SERVICE RISER (FOR REFERENCE ONLY)



KEY TO NUMBERED PARTS:

- 1 STAINLESS STEEL BAND-IT CLIPS #M211  
2 GALVANIZED SHEET STEEL FORM.  
3 HOLES TO BE DRILLED IN FIELD TO BE SUIT.

5 STEEL SEWER SERVICE INSULATION FORM

No.	Issue	Date
01	ISSUED FOR TENDER	2013-MAR-25
02	REISSUED FOR TENDER	2013-OCT-25



No.	Revision	SLB	Date
00	100% REVIEW	SLB	2013-MAR-04
No.	Revision	Ckd. By	Date

PERMIT OF PRACTICE EXP SERVICES INC.	
Signature	<i>S. Burden</i>
Date	<i>Oct 25/13</i>
PERMIT NUMBER: P483 NT/NU Association of Professional Engineers and Geoscientists	

ISSUED FOR TENDER

	Const. North
	Drawn By: I. CRAWFORD
	Dwg. Standards Ckd. By:
	Designed By: A. ZARAD
Date Printed	Dwg. Design Ckd. By: S. BURDEN

exp Services Inc.  
T: +1 613 688 1899 | F: +1 613 225 7330  
2550 Queensview Drive, Unit 100  
Ottawa, ON K2B 8H6  
CANADA

www.exp.com



• BUILDINGS • EARTH & ENVIRONMENT • ENERGY •  
• INDUSTRIAL • INFRASTRUCTURE • SUSTAINABILITY •

Project Title <b>NEW UTILIDOR DESIGN RESOLUTE BAY, NU</b>	
Dwg. Title <b>SANITARY SERVICE DETAILS</b>	
Project No. <b>OTT-00206333-A0</b>	Rev. No. <b>02</b>
Scale <b>NOT TO SCALE</b>	