

## **Abandonment and Restoration Plan Hope Lake Camp**

Matrix Aviation Solutions Inc.  
#8 Yellowknife Airport  
Yellowknife, NT  
X1A 3T2

**February 2008**

## Table of Contents

Table of Contents .....	2
Introduction .....	3
Project Location .....	3
Schedule .....	6
Infrastructures currently on site .....	6
Section 1: Final Abandonment and Restoration Plan .....	6
Buildings and Content .....	6
Water System .....	7
Electrical System .....	7
Fuel and Chemical Storage Facilities .....	7
Waste Facility and Incinerator .....	7
Greywater Sump .....	7
Camp site .....	8
Documentation and Inspection .....	8
Section 2: Seasonal Shutdown and Restoration Plan .....	8
Buildings and Content .....	8
Water System .....	8
Electrical System .....	8
Fuel and Chemical Storage Facilities .....	8
Waste Facility and Incinerator .....	9
Greywater Sump .....	9
Camp site .....	9
Documentation .....	9

## **Introduction**

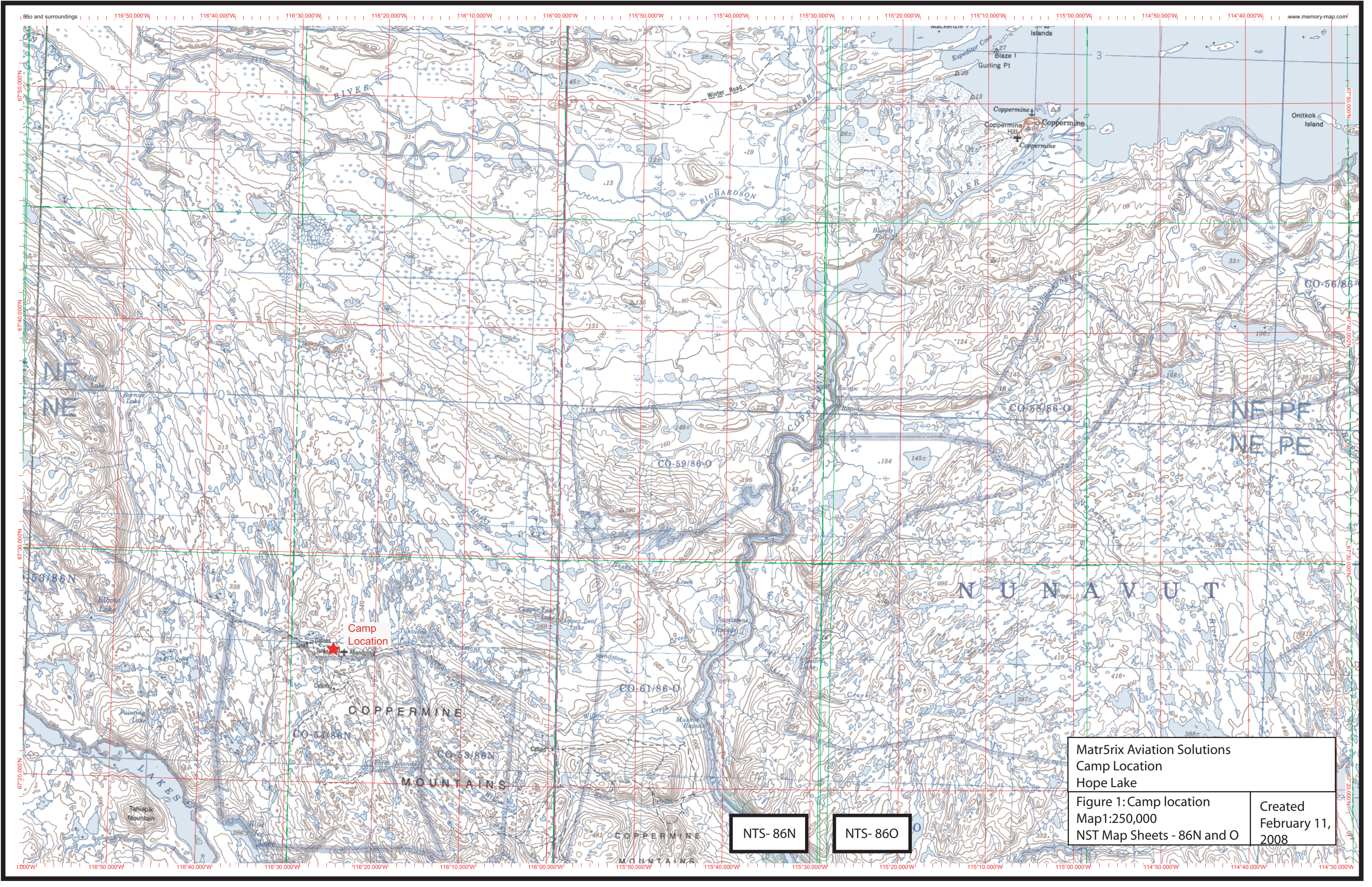
This abandonment and restoration plan has been prepared to cover the remote camp near Hope Lake, Nunavut. The program is scheduled for May 2008 to April 2010. The camp will house the crews for the Coronation Minerals Diamond Drilling program that is covered under another permit and licence.

## **Project Location**

The Camp is located at Hope Lake, Nunavut (Figure 1 and Figure 2).

67° 26.4'N, 116° 27.1'W  
NTS 86N/8



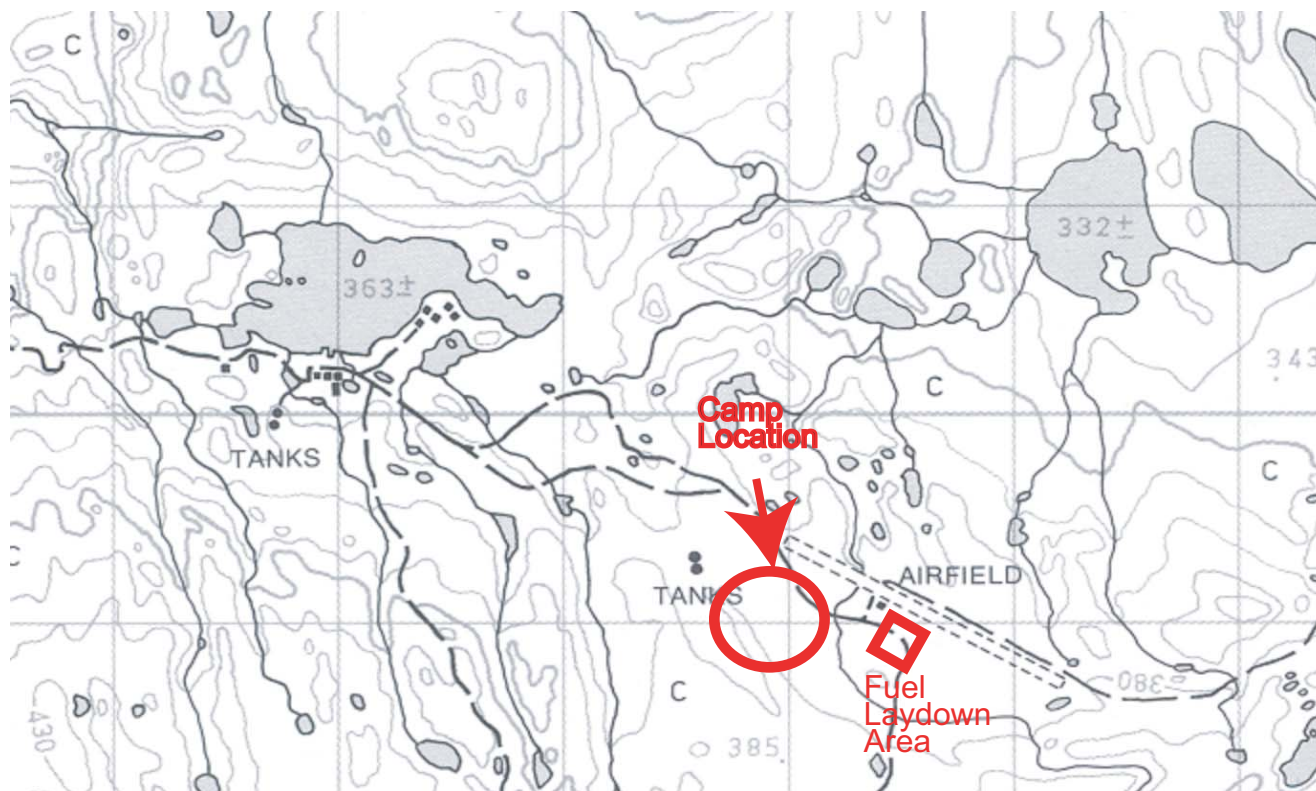


Matr5rix Aviation Solutions  
Camp Location  
Hope Lake

Figure 1: Camp location  
Map1:250,000  
NST Map Sheets - 86N and O

Created  
February 11,  
2008





**Figure 2: Detailed Camp Location**  
Location:  
Latitude: 67°2.75 N  
Longitude: 116°24.87 W  
NTS Map No. 86N/8

## **Schedule**

The seasonal shutdown of the camp site should take 5 days to complete and will take place after the activities that are supported by the camp have ceased. It should be conducted between the 10 and 15 of September. The plan will be applied by the Hope Lake project personnel under the supervision of the field supervisor.

## **Infrastructures currently on site**

Fridge  
Stove  
Grill  
Kitchen,pots,pan,dishes,ect  
Microwave  
Tables,chairs,ect  
Freezers with food (2)  
Boxed food  
Washer  
Dryer  
Hot water tank  
Water pump (electric)  
Water tank  
Water pump (gasoline)  
Water lines  
14'x16' canvas tents – 4 units  
tent frames – 4 units  
Weatherhaven tents – 7 units  
Heat stoves - 12 units  
Electrical wire and fixtures  
Plumbing and fixtures  
Generator  
Quads - 2  
First Aid equipment  
Office supplies  
Small trailer for Quad  
Miscellaneous materials

## **Section 1: Final Abandonment and Restoration Plan**

### **Buildings and Content**

All the reusable equipment (tents, tent metal frames, stoves, foamies, kitchen stove, refrigerator, other kitchen appliances and equipment, showers, hot water tank, etc) will be packaged and flown out from project site to Yellowknife. Wood structures like the kitchen, office, outhouses, dry, generator shed, tent wooden floors, beds and tables will be dismantled and burned. Nails, screws, anchors and other non combustible parts will be recovered, packaged and flow out to an approved municipal discharged.

## **Water System**

Pump, tanks and hoses will be drained, dismantled, packaged and flown out to Yellowknife. The wooden pump shack built to protect the pump will be burned as for the other wood structures.

## **Electrical System**

The generator shed will be inspected for remaining hazardous waste (oil, grease) and will be drained of its fuel. Remaining waste fuel and oil will be collected in the containers labeled for that usage and used through the summer. The shed will be dismantled and burned. The soil will be inspected for contamination. Electrical wires, sockets, etc...will be taken down and either returned with camp material to Yellowknife, or flown out to an approved municipal discharge.

## **Fuel and Chemical Storage Facilities**

The fuel storage area consists of segregated groups of drums with empties apart from full drums. At the end of the field season, an inventory of remaining fuel will be made and full drums will be inspected. Full and empty drums will be flow out back to source or to an interested buyer.

Propane cylinders will be flown out as well to source. Remaining waste fuel, stored in properly labeled drums will be flown out to a fuel outlet or discharge that accepts this type of fuel. Chemical stored on site will consists of drill additives, oil, grease and household cleaners. All drill additives will be stored in or by the drill foreman shed. Household cleaners will mainly be stored in the kitchen. Upon camp closure, any unused drilling additive, oil or grease will be returned to the drilling company warehouse. Half empty containers will be taken off site to be properly disposed in an approved discharge. Empty containers will be disposed with regular garbage.

## **Waste Facility and Incinerator**

Once the camp is entirely dismantled, all remaining combustible waste stored at this site will be burned. The incinerator will be dismantled, reusable parts will be returned to Yellowknife and the barrel will be discarded in an approved municipal discharge.

## **Greywater Sump**

The kitchen-dry greywater sump will be filled back and leveled.

## **Camp site**

The camp site will have a final inspection. Areas showing too much wearing evidences will be covered with a layer of peat moss and lightly fertilized to promote natural growth. Drill core to be left on site will be properly stored and secured.

## **Documentation and Inspection**

Photos of camp prior to building will be taken. Monitoring will be done during occupancy and photos taken. Once the site restored, it will again be documented with photos. Soil contaminated by hydrocarbons and unnoticed before abandonment will be treated as per the spill contingency plan.

## **Section 2: Seasonal Shutdown and Restoration Plan**

### **Buildings and Content**

All equipment will be stored inside the wooden buildings to ensure they will withstand the winter season. Canvas tents will be secured and braced internally to ensure they will withstand snow and wind loads. Wood structures will be secured with nailed plywood over windows and doors to prevent inadvertent opening. Snowmachines, argo's and quads will be stored inside the core shacks and shop building.

### **Water System**

Pump, tanks and hoses will be drained and dismantled. Rented equipment will be flown out to owner. Hoses will be rolled and stored in the kitchen.

### **Electrical System**

The generator shed will be inspected for remaining hazardous waste (oil, grease) and will be drained of its fuel. Remaining waste fuel and oil will be collected in the containers labeled for that usage and used through the summer. The generator will be winterized and prepared for startup in spring. The soil surrounding the generator shed will be inspected for contamination. Electrical wires, plugs and sockets will be stored in the kitchen.

### **Fuel and Chemical Storage Facilities**

An inventory of remaining fuel will be made and full drums will be inspected and secured for the winter. Empty drums will be flown out to source. Empty propane cylinders will be flown out to source. Chemical stored on site will consists of drill additives, oil, grease and household cleaners. All drill additives will be stored in or by the



drill foreman shed and secured for the winter. Empty containers will be disposed with regular garbage. The soil of the areas will be inspected for contamination.

## **Waste Facility and Incinerator**

Once the camp dismantled and remaining buildings secured, all remaining combustible waste stored at this site will be burned. The incinerator will be dismantled and stored in the kitchen. The soil will be inspected for contamination.

## **Greywater Sump**

The greywater sump wood cover will be secured for winter.

## **Camp site**

Soil contaminated by hydrocarbons and unnoticed before abandonment will be treated as per the spill contingency plan.

## **Documentation**

Equipment and buildings left on site will be inventoried. Photos of camp and drill sites prior to building of drilling will be taken. Monitoring will be done during occupancy and photos taken. Once the site secured for the winter, it will again be documented with photos.