

Haughton-Mars Project

Maps

NWB Application (2007)



Fig 1: Haughton Crater, Devon Island. Context map (National Geographic).

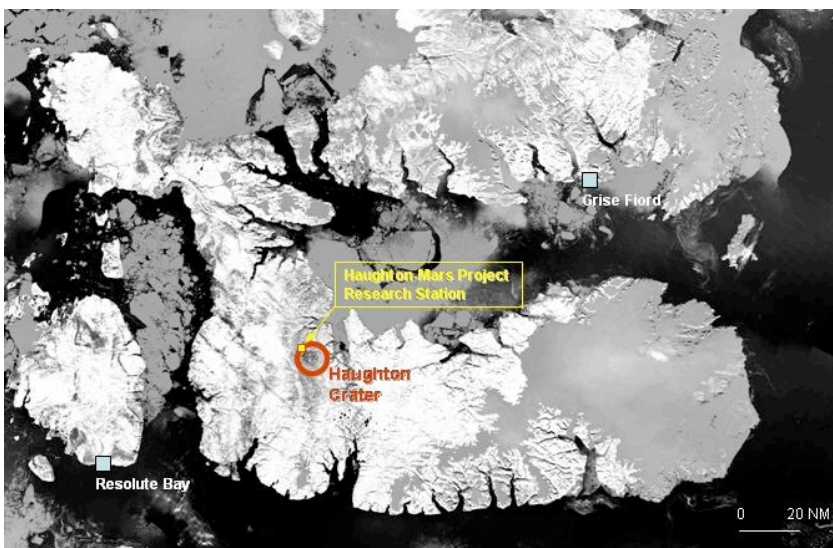


Fig 2: Location of HMP Research Station at Haughton Crater, Devon Island.



Fig 3: Portion of 1:250,000 scale topographic map 58/H showing area of interest.

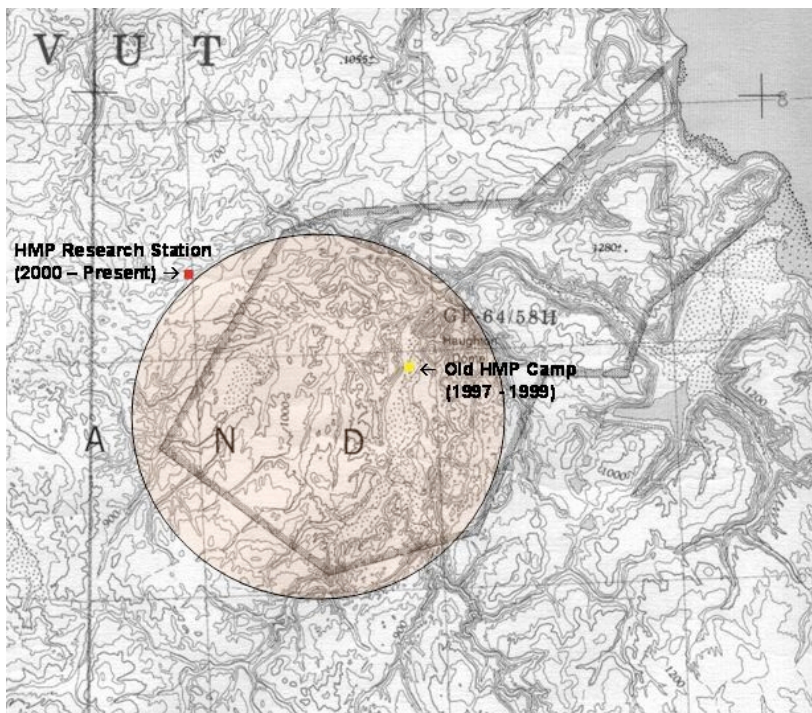


Fig 4: Outline of Haughton Crater and present location of HMP Research Station (red dot). Note relationship to IOL GF-64/58H and location of old camp.

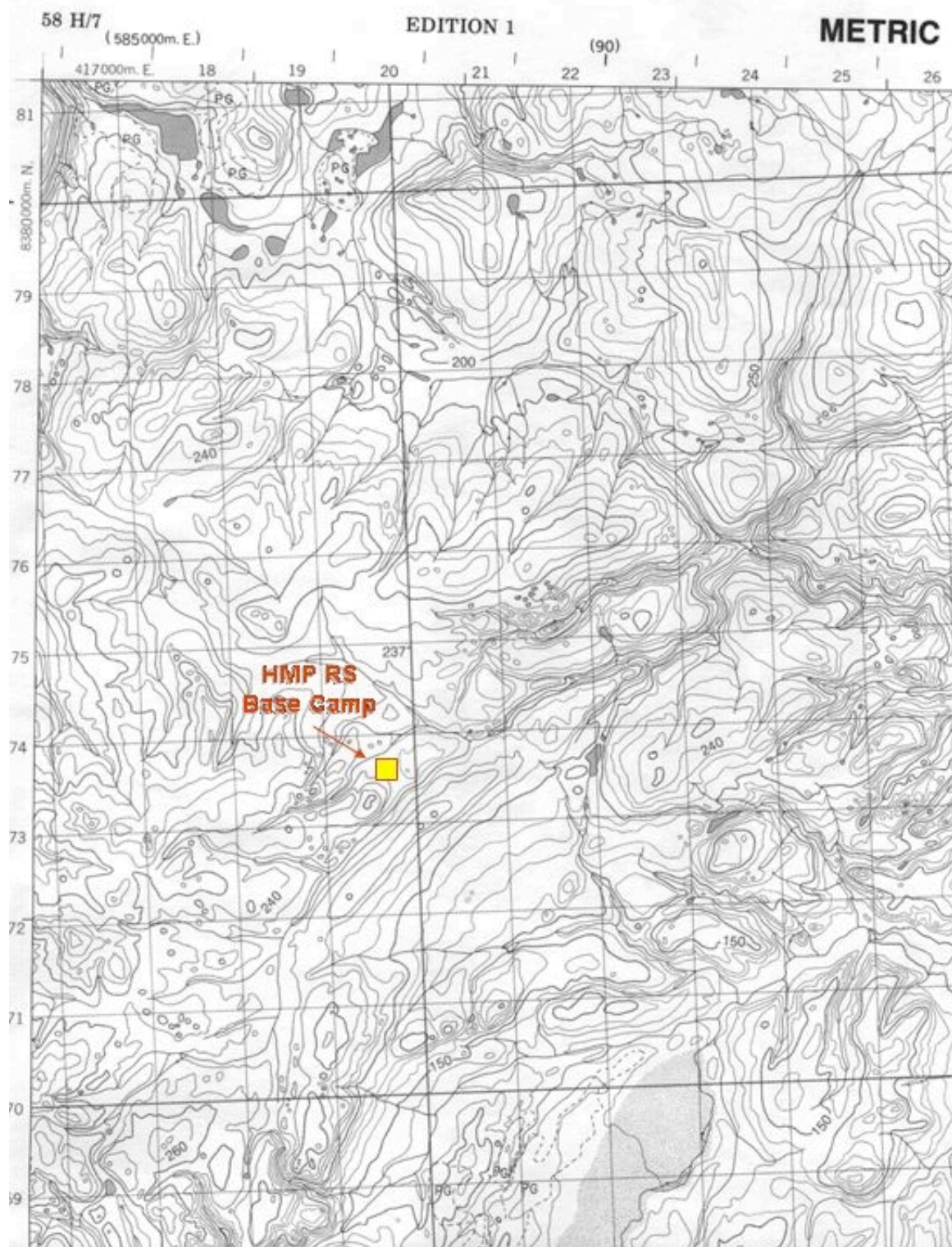


Fig 5: Portion of 1:50000 scale topographic map 58H/7 showing area around the Haughton-Mars Project Research Station.



Fig. 6: Base Camp and Airstrip areas at HMP Research Station.

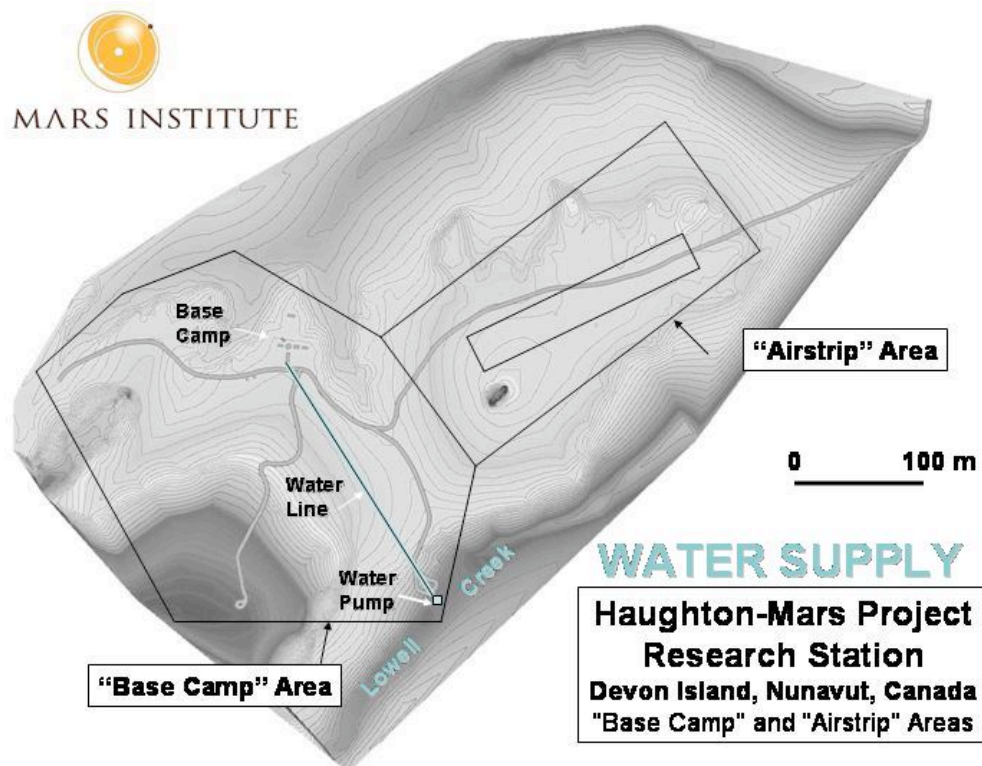


Fig 7: High-resolution topographic map projection showing water supply for Haughton-Mars Project Research Station Base Camp. Water pump draws water from Lowell Creek.