

CASP Annual Field Report 2013

Nunavut Water Board License # 3BC-PRO0914

Project title: Provenance of clastic sediments in the Sverdrup Basin, Canadian Arctic

Principal Investigator: Smyth, Helen, Dr. (CASP)

Research Team: Kelly, Simon R.A., Dr. (CASP)
Hülse, Peter, Dr. (CASP)
Schneider, Simon, Dr. (CASP)
Dockman, David, MSc-student, (University of Alberta)

Fieldwork Dates: Camp A: July 2nd to July 12th 2013; Camp B: July 12th to July 30th 2013

Fieldwork Location: Sawtooth Range, Ellesmere Island

General remarks on camp locations:

During our 2013 field season, we set up two camp sites. Both sides were accessed by helicopter. Camp A, was located (N 79°53.043', W 82°26.414') on the NE side of the Sawtooth Range. On July 12th 2013, we moved by helicopter to Camp B (N 79°35.799', W 83°39.945') on the mid-western side of the Sawtooth Range.

No permanent or semi-permanent structures were erected during the expedition. No structures/materials/equipment remains at either camp site. The sites were left as close to the original state as possible. This was achieved by temporary low-impact camp sites consisting of 5 small sleeping tents and one cooking tent (see photographs).

Both camps were located near small streams draining from the mountain range to provide for drinking water.

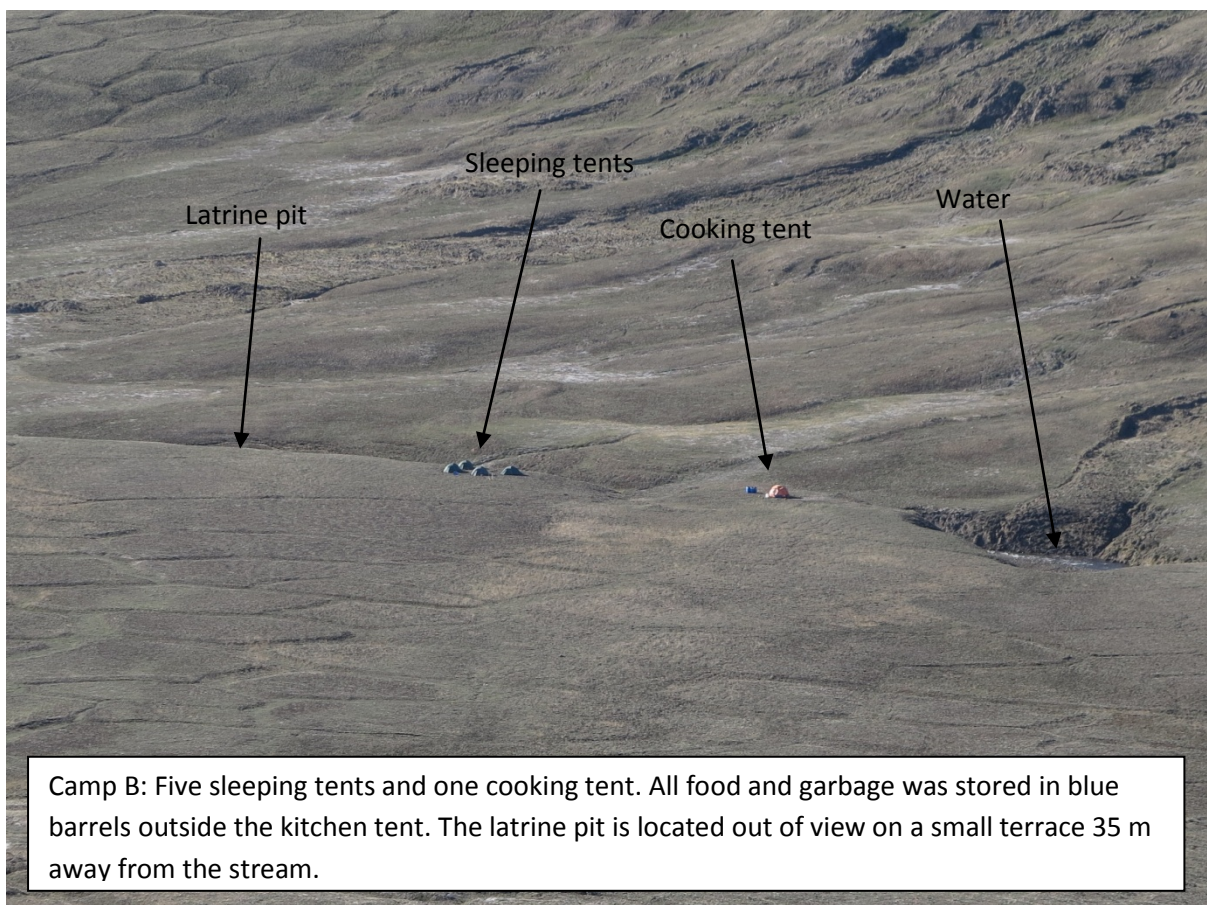
Water use and waste disposal:

The average water use per day was 25-35 litres for our 5 person team. The water was mainly used for drinking and cooking. We used only a minimum for cleaning purposes. This was achievable by eating mainly dehydrated food from prepared bags avoiding the need of plates. Cooking pots were only used to heat water.

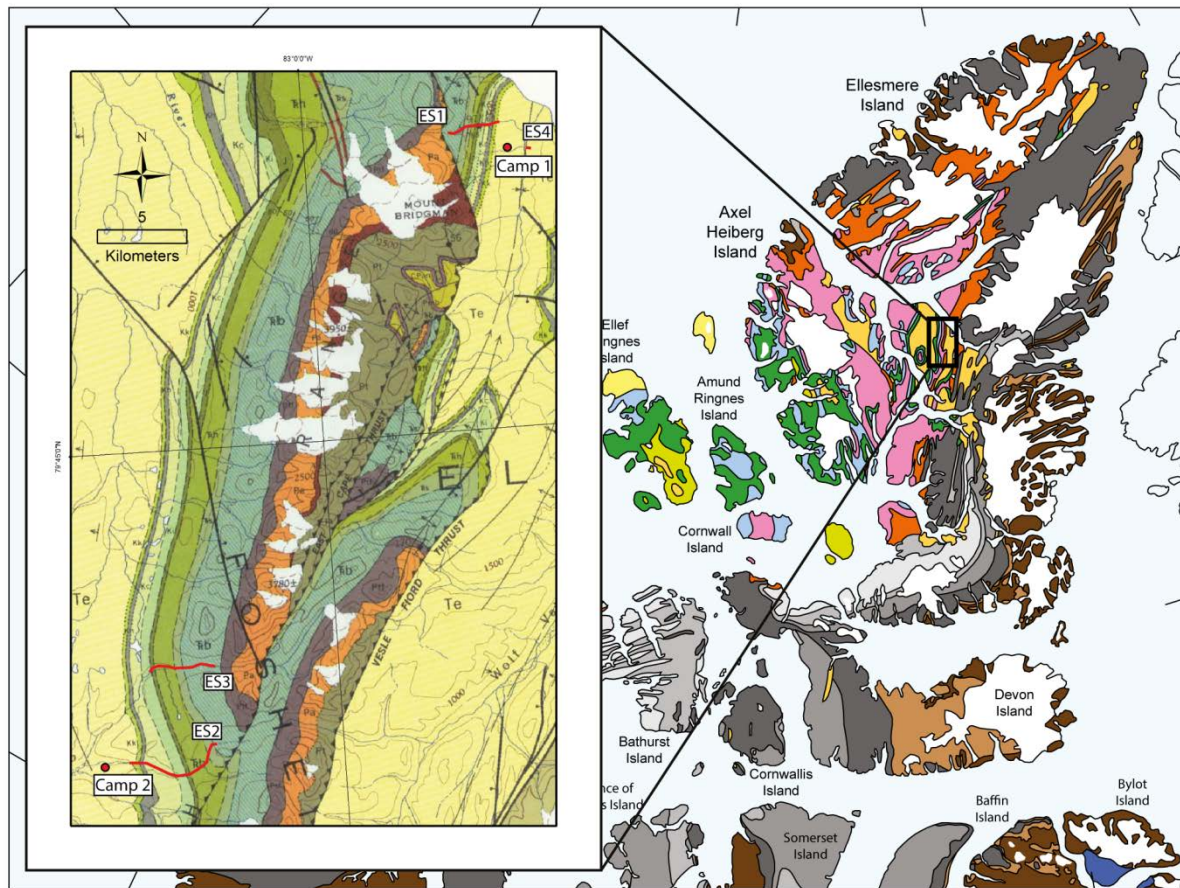
Latrine pits were established 100 m downstream from the campsites and in distances of at least 35 m to the stream (see photographs). After camp move and at the end of the season, the latrine pits were filled with native material and levelled to the original surface contour.

All other waste, including micro-litter was carefully collected in waste disposal bags and completely transported back to Resolute Bay for regular disposal by PCSP.

Photographic record of the campsites:



Fieldwork location maps:



The larger map shows the location of our study area on Fosheim Peninsula, Ellesmere Island. Locations of our camp sites and sections (ES1 to ES4) in the Sawtooth Range, Fosheim Peninsula, are displayed on the smaller map.