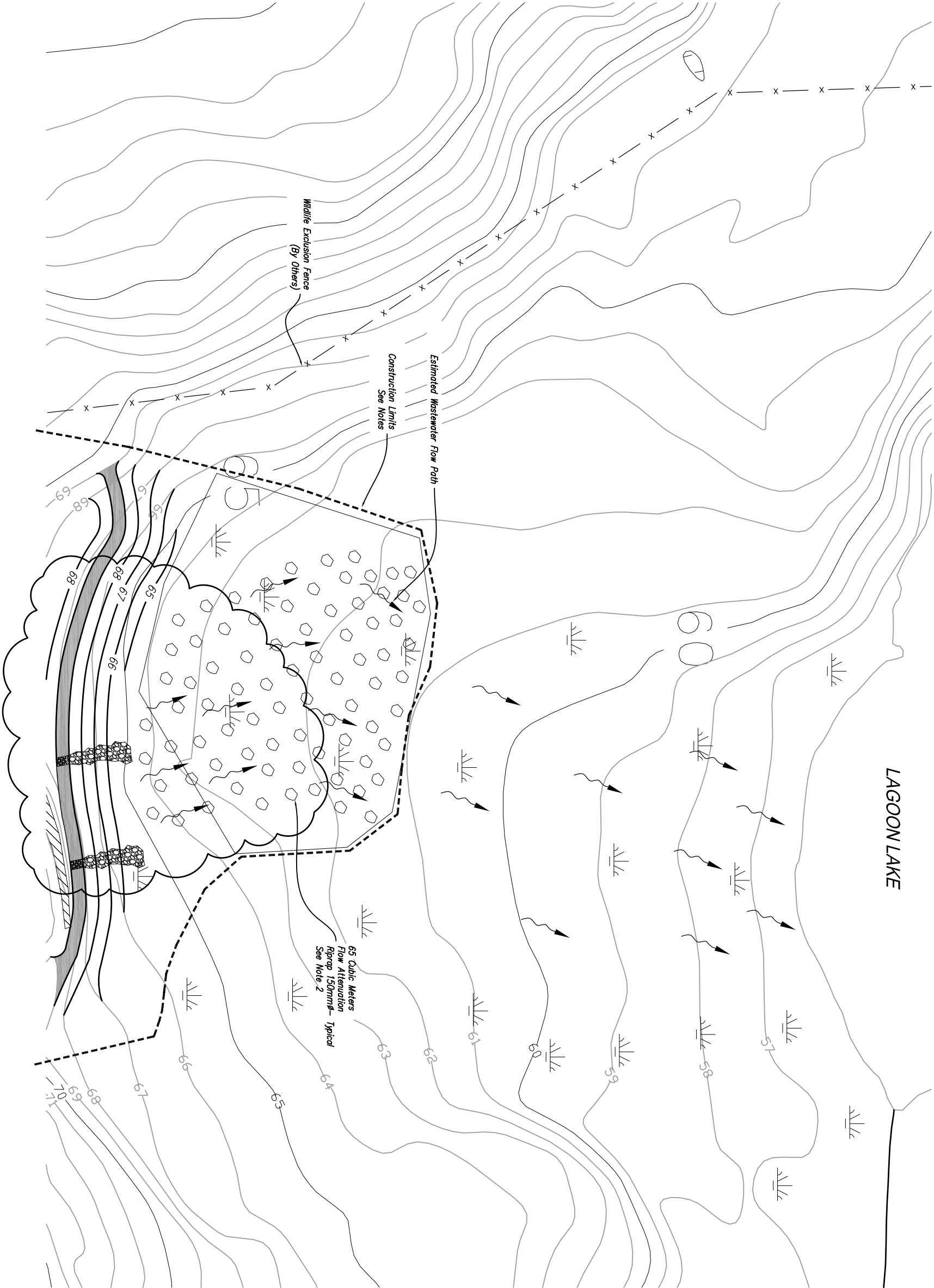


- Notes:
1. Contractor Shall Fill in Existing and Any Tree Pits From Construction Activity Within Tundra Wetland System (Incidental)
 2. Place Riprap in Random Locations to Divert Flow Path(s) Within This Area.



Rev	Date	Description
8	11/03/11	Record Drawing

GOVERNMENT OF NUNAVUT
DEPARTMENT OF COMMUNITY AND GOVERNMENT SERVICES
BAKER LAKE SEWAGE SYSTEM
IMPROVEMENTS
QAMAMITUQA, NUNAVUT

Flow Attenuation Plan

C-4



Stantec
4444 Centreville Road, Suite 140
White Bear Lake, MN 55127
651-255-5050
651-255-5060 (fax)

