

2002 Cambridge Bay Annual Water Licence Report

Prepared for:

Nunavut Water Board
P.O. Box 119
Gjoa Haven, NU X0B 1J0

Prepared by:

Earth Tech (Canada) Inc.
17203-103rd Avenue
Edmonton, AB T5S 1J4

TABLE OF CONTENTS

SECTION	TITLE	PAGE NO.
1.0	INTRODUCTION	1
2.0	WATER USE.....	1
3.0	WASTEWATER DISCHARGE.....	1
4.0	WATER AND WASTEWATER QUANTITIES	2
5.0	SYSTEM MODIFICATIONS, MAINTENANCE AND LICENCE AMENDMENTS	2
6.0	SURVEILLANCE NETWORK PROGRAM MONITORING	2
7.0	SYSTEM ABANDONMENT AND RESTORATION WORK.....	2
8.0	SYSTEM STUDIES AND INSPECTIONS	3
9.0	TRAINING AND COMMUNICATION EXERCISES	3
10.0	SYSTEM DISCHARGES.....	3
11.0	SYSTEM EXCAVATIONS.....	3
12.0	LAGOON SLUDGE	3
13.0	OPERATION AND MAINTENANCE PLANS.....	3

LIST OF FIGURES

Figure 1	Water Supply and Waste Sites
Figure 2	Lagoon and Water Supply Locations
Figure 3	Water Pumphouse and Pipeline Locations
Figure 4	Sewage Lagoon Pond Locations
Figure 5	Water Distribution Pumphouse
Figure 6	Sewage Lagoon Sampling Locations

1.0 INTRODUCTION

In 2002, the community infrastructure systems providing water, sewage and solid waste management to the residents of the Hamlet of Cambridge Bay were successfully operated and maintained by the community. **Figure 1** and **Figure 2** provide an overview of the location of the source water and wastewater lagoon with respect to the community.

2.0 WATER USE

The raw water source is Water Supply Lake, approximately 3 kilometers north of the community. The catchments area for the Lake is 231 hectares (571 acres). The summer storage of Water Supply Lake is approximately 1,738,000 m³ and winter storage volume is about 544,000 m³ with 2.5 meters of ice. The water source is not near any human activities and, as such, is relatively free from potential contamination.

The intake facilities extend 20 meters into Water Supply Lake to a depth of approximately 4 meters below the surface. The intake pump discharge line consists of a 100mm diameter HDPE pipe. This pipeline is coupled to a submersible pump at the intake pumphouse and rests with a HDPE intake shaft or casing pipe. The water is chlorinated at the intake pumphouse prior to pumping to the distribution pumphouse.

A 2,900 meters water supply pipeline runs from the intake facilities to the distribution pumphouse at the centre of community. The 150 mm waterline is freeze protected with insulation and a 50 mm recirculation waterline.

Water is then distributed by water trucks from the truckfill station in the community center to the water tanks within each residence in the community. Water delivery is provided to the residents by the Hamlet using 12,000 litre water trucks. There is a 260 m³ storage tank located beside the distribution pumphouse. **Figure 3** shows the location of the intake area, pipeline, and distribution pumphouse. **Figure 4** shows the water distribution pumphouse.

3.0 WASTEWATER DISCHARGE

Sewage is collected from the community by sewage trucks to the sewage lagoon system, located approximately 1.5 km northeast of the community and adjacent to the existing Waste Metal Disposal Site. The system consists of several natural ponds connected in series (Pond 1, Pond 2, Pond 3, Pond 4, Pond 5 and Pond 6) as shown in **Figure 5**. Based on the normal water level in the lagoon ponds, the lagoon volume was estimated to be 72,000 m³ by IEG Environmental Consultants.

The sewage is discharged into Pond 1 of the lagoon by tanker trucks at truck discharge site. The treated sewage by the lagoon is channeled into Cambridge Bay. Currently, there is no discharge control structure in the lagoon. The existing lagoon is, therefore, seasonally flooded due to spring runoff flowing into the lagoon from the surrounding watershed. The sewage effluent from the lagoon is discharged to Cambridge Bay continually.

4.0 WATER AND WASTEWATER QUANTITIES

Actual water consumption data are not available for this report. Water consumption was instead estimated as 140 litres per capita per day. Based on the 1991 Canadian census population of 1,309 people and an annual growth rate of 2.44%, the 1992 population of Cambridge Bay is assumed to be 1,341.

Month	Total Water Use (Litres)
January	5,819,940
February	5,256,720
March	5,819,940
April	5,632,200
May	5,819,940
June	5,632,200
July	5,819,940
August	5,819,940
September	5,632,200
October	5,819,940
November	5,632,200
December	5,819,940
Total	68,525,100

The monthly and annual quantities of wastewater discharged are not metered, but are estimated to equal the quantity of potable water. The estimated annual wastewater production of 68,525 m³ allows a retention time in the sewage lagoon of 384 days.

5.0 SYSTEM MODIFICATIONS, MAINTENANCE AND LICENCE AMENDMENTS

The water use and waste disposal in the Hamlet of Cambridge Bay is regulated by a Type B Water Licence. The water licence for the Hamlet of Cambridge Bay, number NWB3CAM0207, was issued on September 1, 2002 and expires on August 31, 2007.

6.0 SURVEILLANCE NETWORK PROGRAM MONITORING

There are three points from which wastewater samples were obtained from the sewage lagoon system as indicated in **Figure 6**; the sewage lagoon pond "lagoon", the outlet of the pond adjacent to the metal disposal site "pond", and the ocean discharge point "outlet". Wastewater sampling was undertaken in 1998.

In 2002, to the best of the community's knowledge, based upon feedback from the community's operating staff and the limited water sample data, the community infrastructure systems were operating within the criteria of the water licence.

7.0 SYSTEM ABANDONMENT AND RESTORATION WORK

The water and sewer systems serving the Hamlet of Cambridge Bay did not have any system abandonment or restoration work completed in 2002.

8.0 SYSTEM STUDIES AND INSPECTIONS

There are no records of any system studies or Indian and Northern Affairs Canada (INAC) inspections undertaken in 2002.

9.0 TRAINING AND COMMUNICATION EXERCISES

There are no records of any staff of the Hamlet of Cambridge Bay attending any conferences or workshops in 2002.

10.0 SYSTEM DISCHARGES

Sewage enters into Pond 1 at the truck discharge site. Sewage travels through the six lagoon ponds identified in **Figure 4**. The wastewater will enter a series of natural lakes and wetlands before ultimately discharging into Cambridge Bay approximately 450 metres east of the community. Effluent from the sewage lagoon discharges during spring, summer and fall. Effluent does not discharge during winter due to freezing.

11.0 SYSTEM EXCAVATIONS

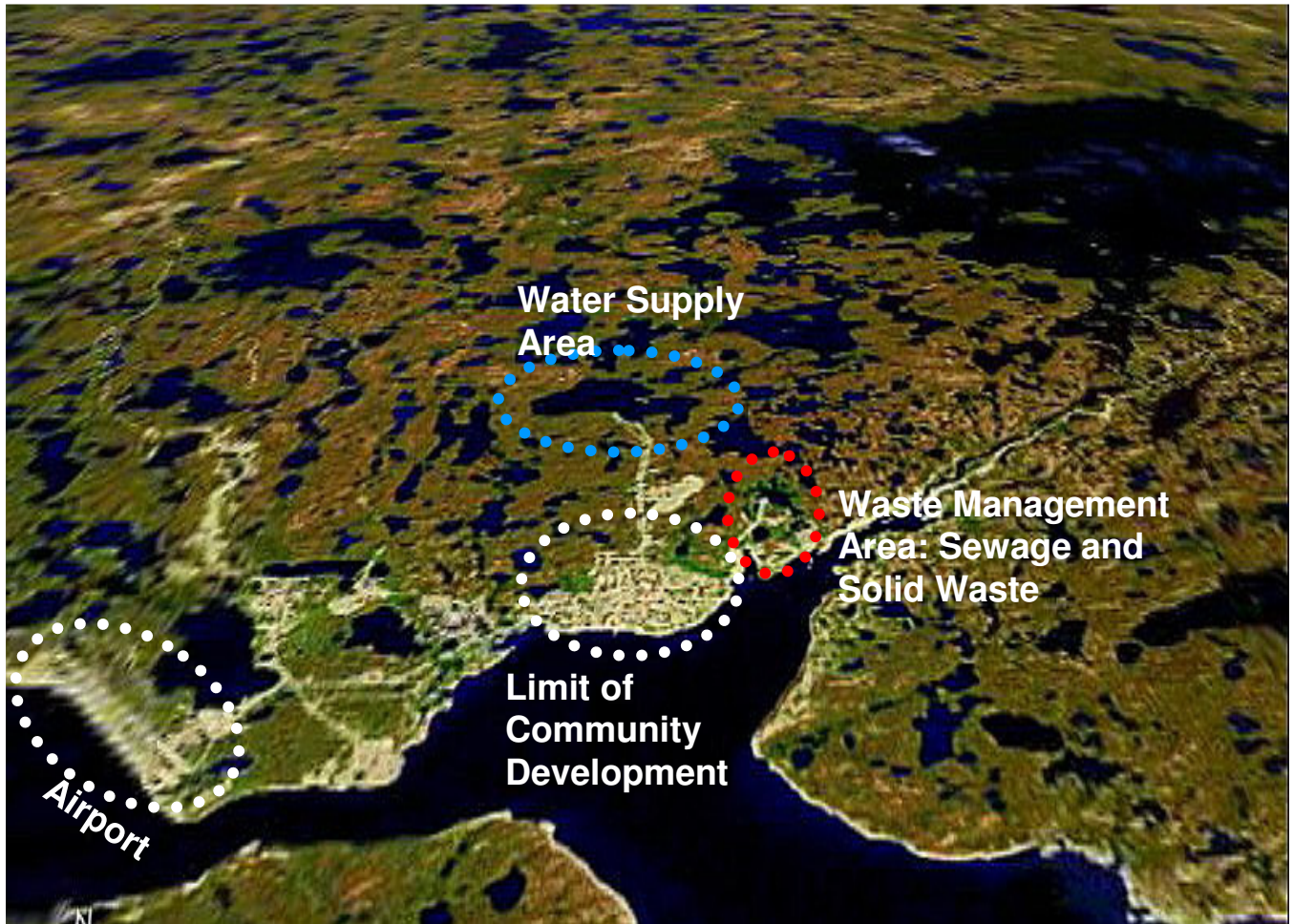
There are no records of any trench or sump excavations in 2002 associated with the Hamlet's water, sewer and solid waste management systems.

12.0 LAGOON SLUDGE

In 2002, there was no removal of solid waste or sludge from the sewage lagoon.

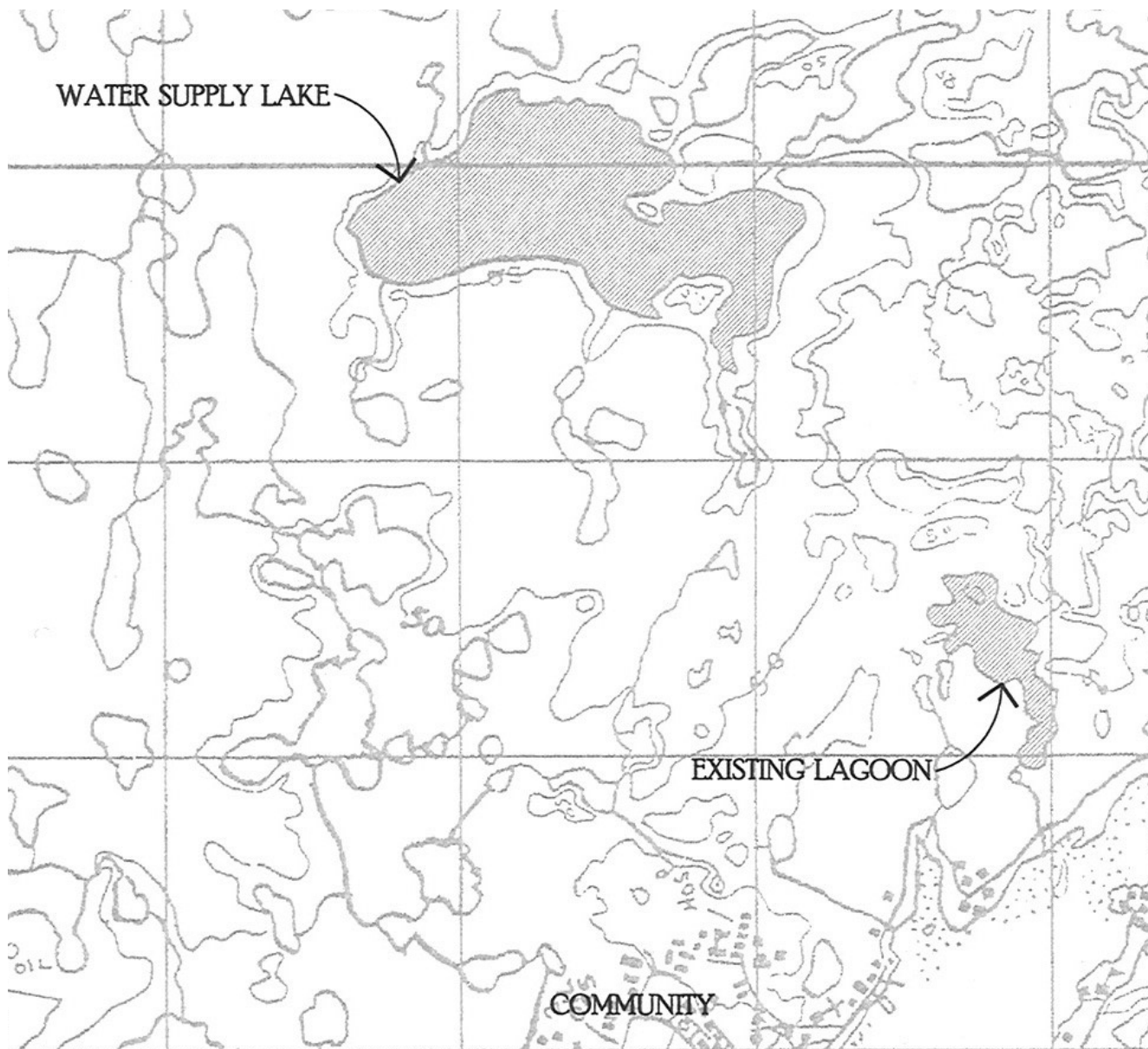
13.0 OPERATION AND MAINTENANCE PLANS

There are no planned changes to Cambridge Bay's operation and maintenance of the water and wastewater systems.



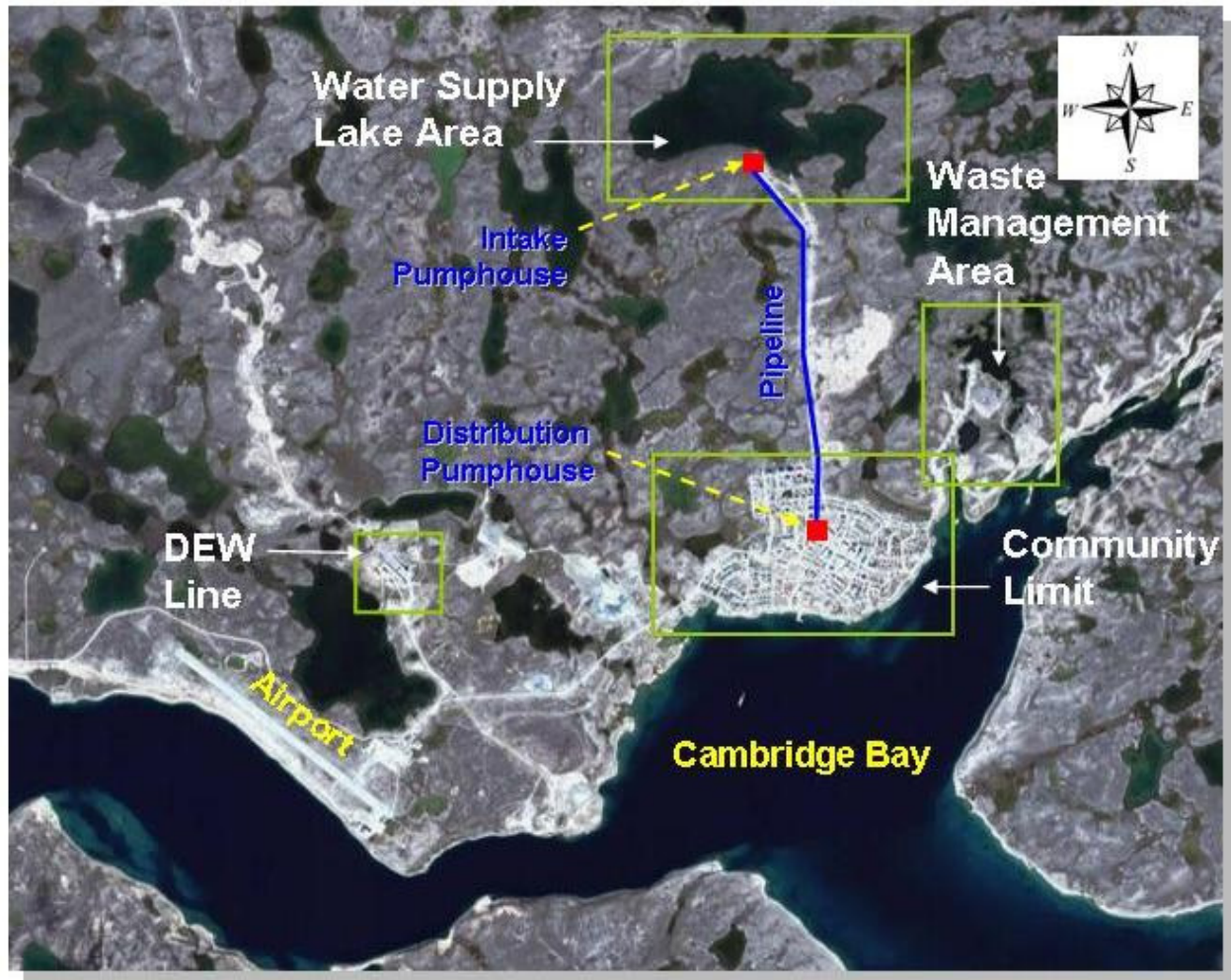
**Hamlet of Cambridge Bay
Annual Report
Water Supply and Waste Sites**

Figure 1



Hamlet of Cambridge Bay Annual Report Lagoon and Water Supply Locations

Figure 2



**Hamlet of Cambridge Bay
Annual Report
Water Pumphouse and Pipeline
Locations**

Figure 3



**Hamlet of Cambridge Bay
Annual Report
Sewage Lagoon Pond Locations**

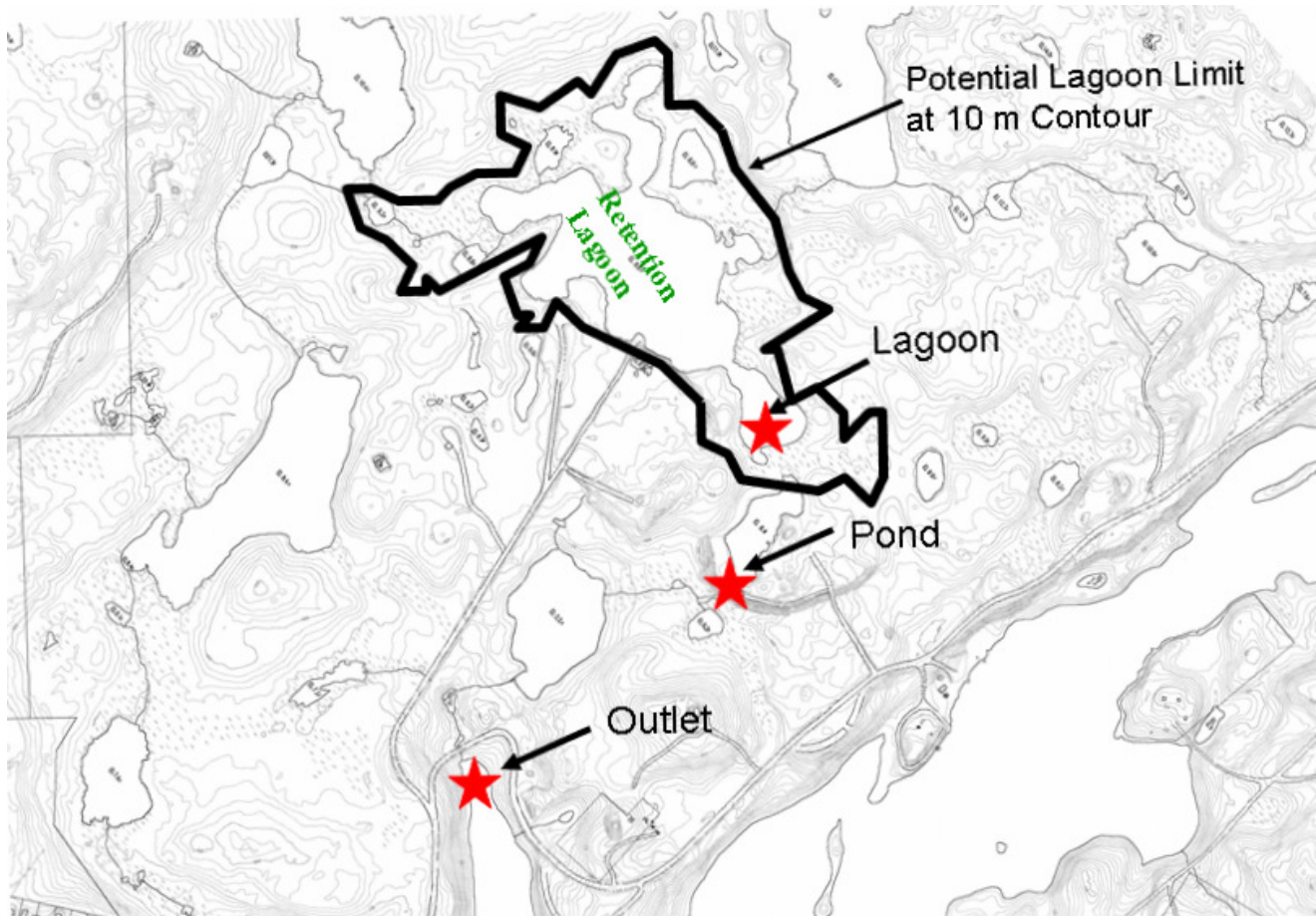
Figure 4



Figure 3 Water Distribution Pumphouse

**Hamlet of Cambridge Bay
Annual Report
Water Distribution Pumphouse**

Figure 5



**Hamlet of Cambridge Bay
Annual Report
Sewage Lagoon Sampling Locations**

Figure 6