

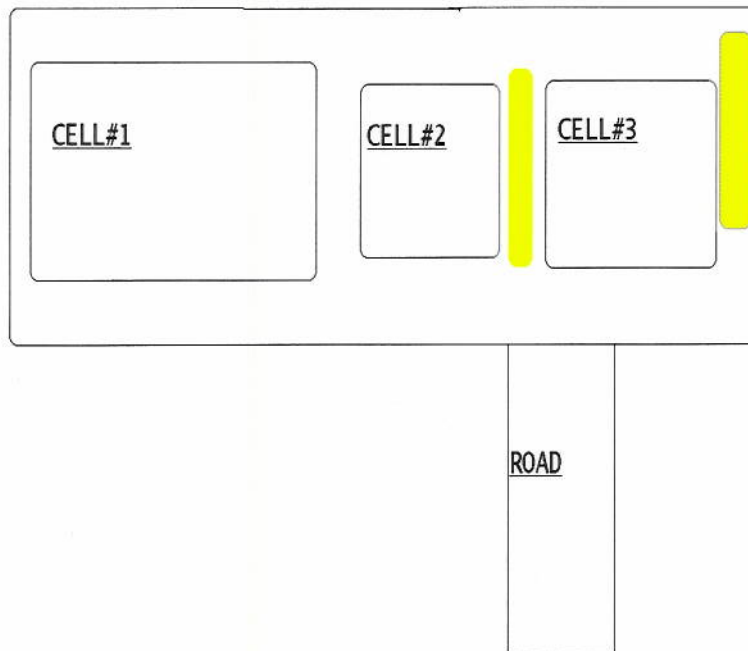
APPENDIX-1 :

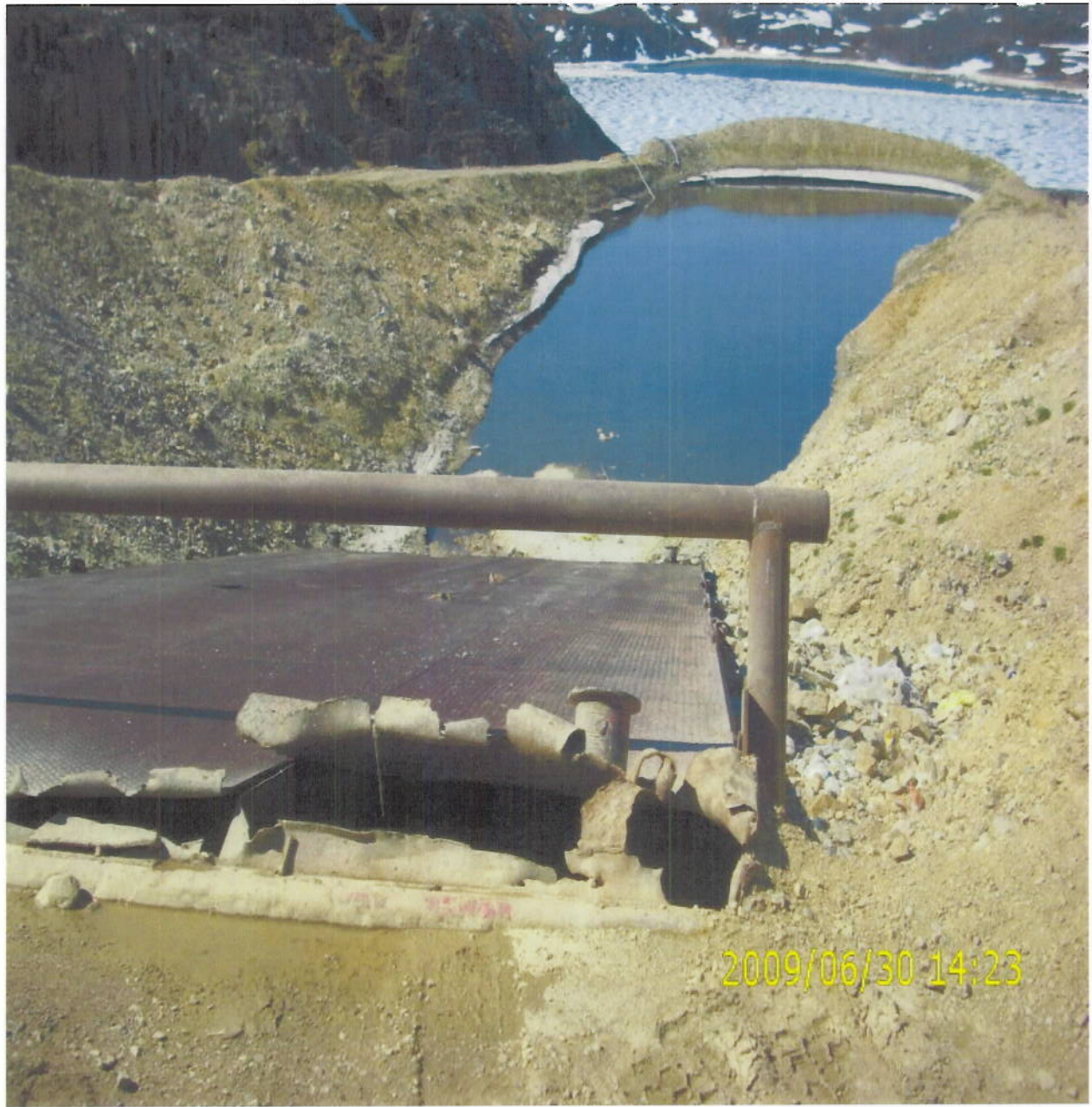
EXISTING THREE CELLS LAGOONS WITH SOME PHOTOS

CAPE DORSET LAGOONS, 2009

SECTION OF BERM BETWEEN CELL 2 & 3 REPAIRED, SECTION OF BERM AT END OF
CELL 3 RAISED 2 FEET TO FIX YEARLY EROSION.

5 LOADS OF GRAVEL USED IN REPAIRS,
APPROX. 60 CUBIC METERS





2009/06/30 14:23

