

WATER TRANSMISSION LINE DESIGN

CHESTERFIELD INLET, NUNAVUT



SITE LOCATION
SCALE: NTS

CLIENT		 TETRA TECH	PROJECT NO.	OFFICE	DES	CKD	REV	DRAWING	
			WTRM03121-01	VANC	DNM	DNM	A		
DATE	SHEET No.	DWN	APP	STATUS	G1.00				
March 5, 2019									
	of	JDM	DNM	IFR					

Q:\Vancouver\Drafting\Transportation\WTRM\WTRM03121-01\WTRM03121-01 - Chesterfield Design, Rev B.dwg [G1.02] April 10, 2019 - 2:45:18 pm (BY: MANG, JUSTIN)

MECHANICAL AND PIPING:

1. THE MECHANICAL/PIPING CONTRACTOR MUST BE APPROVED BY THE GON OR ITS REPRESENTATIVE PRIOR TO THE AWARD OF THE CONTRACT. A PRE-CONTRACT INSPECTION OF THE CONTRACTORS FACILITY MAY BE CARRIED OUT AT THE DISCRETION OF THE GON OR ITS REPRESENTATIVE.
2. THE CONTRACT WORK WILL BE SUBJECT TO PRE-DELIVERY INSPECTIONS AND FINAL INSPECTIONS AT THE DISCRETION OF THE GON OR ITS REPRESENTATIVE.
3. PE PIPE SHALL BE MANUFACTURED TO ASTM F714 OR AWWA C906.
4. PIPE MATERIAL SHALL BE PE 4710.
5. DIMENSIONS AND WORKMANSHIP SHALL BE AS SPECIFIED BY ASTM F714.
6. HDPE FITTINGS AND TRANSITIONS SHALL MEET ASTM D3261.
7. HDPE PIPE SHALL HAVE A MINIMUM DENSITY OF 0.955 g/cm³.
8. HDPE PIPE AND ACCESSORIES 4-INCH DIAMETER AND LARGER, SHALL BE 125 PSI AT 73.4°F MEETING THE REQUIREMENTS OF STANDARD DIMENSION RATIO (SDR) 17 MINIMUM STRENGTH.
9. FABRICATED HDPE MITRED FITTINGS SHALL BE TO AWWA C906, SUITABLE FOR THE PRESSURE RATING AND SIZE SPECIFIED.
10. MOULDED HDPE FITTING SHALL BE TO ASTM 3261, SUITABLE FOR PRESSURE RATING SPECIFIED AND FUSION TO MAIN PIPE.
11. ALL JOINTS SHALL BE HEAT BUTT FUSED TO DEVELOP FULL STRENGTH OF THE PIPE. FUSION SHALL BE TO ASTM D2657 AND SHALL BE FULLY IN ACCORDANCE WITH THE MANUFACTURERS RECOMMENDATIONS WHERE AVAILABLE.
12. CONTRACTOR SHALL HANDLE PIPE IN ACCORDANCE WITH MANUFACTURERS RECOMMENDATIONS. DO NOT USE CHAINS OR CABLES PASSED THROUGH PIPE BORE SO THAT WEIGHT OF PIPE BEARS ON PIPE ENDS.
13. CONTRACTOR TO LAY AND JOIN PIPES TO MANUFACTURERS INSTRUCTIONS AND SPECIFICATIONS EXCEPT IF OTHERWISE NOTED IN THE CONTRACT DOCUMENTS.
14. CONTRACTOR TO MAINTAIN VERTICAL TOLERANCE: +/- 25 mm FROM SPECIFIED GRADE.
15. CONTRACTOR TO LAY PIPES ON PREPARED BED, TRUE TO LINE AND GRADE. CONTRACTOR TO ENSURE BARREL OF EACH PIPE IS IN CONTACT WITH SHAPED BED THROUGHOUT ITS FULL LENGTH. PIPE TO BE LAID AS PER DETAIL 1/C3.00.
16. CONTRACTOR TO KEEP JOINTING MATERIALS AND INSTALLED PIPE FREE OF DIRT, WATER AND OTHER FOREIGN MATERIALS. WHENEVER WORK IS STOPPED, CONTRACTOR SHALL INSTALL A REMOVABLE WATERTIGHT BULKHEAD AT OPEN END OF LAST PIPE LAID TO PREVENT ENTRY OF WATER AND FOREIGN MATERIALS.
17. CONTRACTOR TO CUT PIPES AS REQUIRED TO MANUFACTURERS RECOMMENDATIONS. LEAVE SMOOTH END AT RIGHT ANGLES TO AXIS OF PIPE.
18. CONTRACTOR TO BUTT FUSE PIPE IN STRICT ACCORDANCE WITH MANUFACTURERS INSTRUCTIONS.
19. WHERE BUTT FUSION IS TO OCCUR IN A LOCATION OTHER THAN IN THE INSTALLED LOCATION (E.G. AT TOP OF TRENCH AND DROPPED IN, OR AT END OF TRENCH AND DRAGGED/PUSHED INTO PLACE), THE CONTRACTOR SHALL SUBMIT A WRITTEN PLAN TO THE GON OR ITS REPRESENTATIVE PROVIDING SAFE WORK PROCEDURES AND QUALITY PROVISIONS.
20. THE CONTRACTOR SHALL BE RESPONSIBLE FOR RESTRAINING THE PIPE AS NECESSARY DURING CONSTRUCTION.
21. TRENCH BEDDING AND BACKFILL SHALL BE AS PER THE SUPPLIED DRAWINGS AND CONTRACT DOCUMENTS.
22. THE CONTRACTOR SHALL ENSURE THAT THE PRECAST HYDRAULIC STRUCTURES ARE IN PLACE AND PIPES ARE PROPERLY INSERTED IN THE COUPLERS PRIOR TO FUSING THE FIRST AND LAST PIPE SEGMENTS.

EXCAVATION & FILL PLACEMENT:

1. PRIOR TO CONSTRUCTION THE CONTRACTOR SHALL CLEAR AND GRADE THE BACKFILL AREA, REMOVING TOPSOIL, BRUSH, SOD AND OTHER ORGANIC DELETERIOUS MATERIALS. ANY UNSUITABLE SOILS SHALL BE OVER EXCAVATED AND REPLACED WITH COMPACTED BACKFILL MATERIAL TO PROJECT SPECIFICATIONS OR AS OTHERWISE DIRECTED BY THE GON OR ITS REPRESENTATIVE.
2. BEFORE PLACEMENT OF ANY MATERIALS, EXPOSED SUBGRADES SHALL BE INSPECTED AND APPROVED BY THE GON OR ITS REPRESENTATIVE.
3. PRIOR TO PLACEMENT ALL SELECT FILL MATERIAL SHALL BE APPROVED BY THE GON OR ITS REPRESENTATIVE.
4. SELECT FILL MATERIAL SHALL BE PLACED IN 300 mm LIFTS AND COMPACTED TO 95% SPMDD.
5. ALL EXCESS OR UNSUITABLE MATERIALS SHALL BE DISPOSED OF OFF SITE AT AN APPROVED FACILITY.

SELECT FILL MATERIAL GRADATION TABLE	
SIEVE SIZE (mm)	PERCENT PASSING (%)
25	70 - 100
5	25 - 63
0.63	7 - 30
0.08	2 - 8

RIPRAP:

RIPRAP SHALL COMPLY WITH THE FOLLOWING:

1. RIPRAP SHALL BE FREE OF POTENTIALLY ACID GENERATING ROCK. CONTRACTOR TO SUBMIT ROCK OR GRAVEL FOR MATERIALS TESTING PRIOR TO THE COMMENCEMENT OF CONSTRUCTION ACTIVITIES. TESTING COSTS SHALL BE INCIDENTAL TO THE SUPPLY AND PLACEMENT OF FILL MATERIAL.
2. RIPRAP SHALL BE FREE OF DELETERIOUS MATERIALS INCLUDING ORGANIC IMPURITIES, CLAY LUMPS, OR FRIABLE PARTICLES.
3. RIPRAP SHALL BE MADE OF SOUND ROCK PRODUCED BY A QUARRY.
4. MIN. SPECIFIC GRAVITY: 2.6.

PUMP:

1. REFER TO SECTION 33 21 20 PUMP STATION FOR PUMP SPECIFICATIONS.
2. CONTRACTOR TO SUPPLY AND INSTALL PAINTED AND TESTED DIESEL PUMP WITH TRAILER PACKAGE c/w LIFTING RAIL, FUEL TANK AND AUTO CONTROL PANEL.
3. PUMP SYSTEM SHALL ALSO INCLUDE FLOW METER, PIPE HOSES AND A SCREEN.
4. CONTRACTOR TO SUPPLY PUMP CURVES AND SPECIFICATIONS TO THE GON OR ITS REPRESENTATIVE FOR APPROVAL PRIOR TO ORDERING THE PUMP SYSTEM.

Community and Government Services - Government of Nunavut

Quantity Estimate

Tetra Tech Project WTRM03121-01 - Chesterfield Inlet Water Transmission Line



NMS Specs				
Preliminaries			Unit	Est Quantity
01 25 01	0-1	Mob / Demob, Temporary Facilities, Security, Quality Control, etc.	lump sum	1
01 35 14	0-2	Traffic Control, Barricades, and Temporary Signage	lump sum	1
01 71 00	0-3	Construction Surveys	lump sum	1
Site Services			Unit	Est Quantity
31 14 11	1-1	Gravel Removal	cu.m	500
31 14 11	1-2	Supply and Place Select Fill Material	cu.m	2,000
33 11 16	1-3	Supply and Install 200 mm DR11 HDPE Pipe	m	3,548
33 11 16	1-4	Supply and Install Air Release Valve	each	10
33 11 16	1-5	Supply and Install Drain Valve	each	15
31 14 11	1-6	Supply and Place Sand for Pumping Pad (Fuel Containment)	cu. m	15
33 42 13	1-7	Supply and Install 600 mm CSP Culvert	m	123
31 37 10	1-8	Supply and Place 50 kg Class Riprap	cu. m	105
31 32 21	1-9	Supply and Place Non-Woven Geotextile	sq. m	1,000
31 32 21	1-10	Supply and Install HDPE Liner	sq. m	75
33 11 16	1-11	Supply and Install Pipe Anchor	each	55
33 11 16	1-12	Supply and Install Pipe Casing	m	55
02 41 13	1-13	Culvert Removal and Off-Site Disposal	each	2
02 41 13	1-14	Shed Removal and Off-Site Disposal	lump sum	1
Mechanical			Unit	Est Quantity
33 21 20	2-1	Supply and Install Pump System c/s Trailer, Controls, and Flow Meter	lump sum	1
33 11 16	2-2	Supply 200 mm Diameter Flexible Hose	m	75
Miscellaneous			Unit	Est Quantity
01 35 43	3-1	Dewatering	lump sum	1
01 35 43	3-2	Sediments and Erosion Control Measures	lump sum	1
02 41 13	3-3	Demolition and Off-Site Disposal of Existing Pipeline	m	3,200
33 11 16	3-4	Supply and Install Valve Box Marker with High U12 Pennant	each	25
Notes:				
1 Quantities shown on this table are estimates and provided for reference only.				

LEGEND

NOTES

E	4/10/19	JDM	DNM	DNM	100% DESIGN - ISSUED FOR REVIEW
D	4/11/19	JDM	DNM	DNM	100% DESIGN - ISSUED FOR REVIEW
C	3/14/19	JDM	DNM	DNM	100% DESIGN - ISSUED FOR REVIEW
B	3/5/19	JDM	DNM	DNM	100% DESIGN - ISSUED FOR REVIEW
A	2/26/19	JDM	DNM	DNM	100% DESIGN - ISSUED FOR REVIEW
NUM	DATE	DWN	CKD	APR	DESCRIPTION
REVISIONS					

PROFESSIONAL SEAL

CLIENT		WATER TRANSMISSION LINE DESIGN CHESTERFIELD INLET, NUNAVUT					
		GENERAL NOTES AND QUANTITIES					
 TETRA TECH		PROJECT NO. WTRM03121-01	OFFICE VANC	DES DNM	CKD DNM	REV E	DRAWING G1.02
		DATE April 10, 2019	SHEET No. of	DWN JDM	APP DNM	STATUS IFR	

Q:\Vancouver\Drafting\Transportation\WTRM\WTRM03121-01 - Chesterfield Design, Rev A.dwg [G1.03] March 05, 2019 - 4:19:19 pm (BY: MANG, JUSTIN)



©2018 Google
DATA SIO, NOAA, U.S. Navy, NGA, GEBCO
Image Landsat / Copernicus
Image IBCAO
©2018 Google

LEGEND

NOTES

B	3/5/19	JDM	DNM	DNM	100% DESIGN - ISSUED FOR REVIEW
A	2/26/19	JDM	DNM	DNM	100% DESIGN - ISSUED FOR REVIEW
NUM	DATE	DWN	CKD	APR	DESCRIPTION
REVISIONS					

PROFESSIONAL SEAL

CLIENT

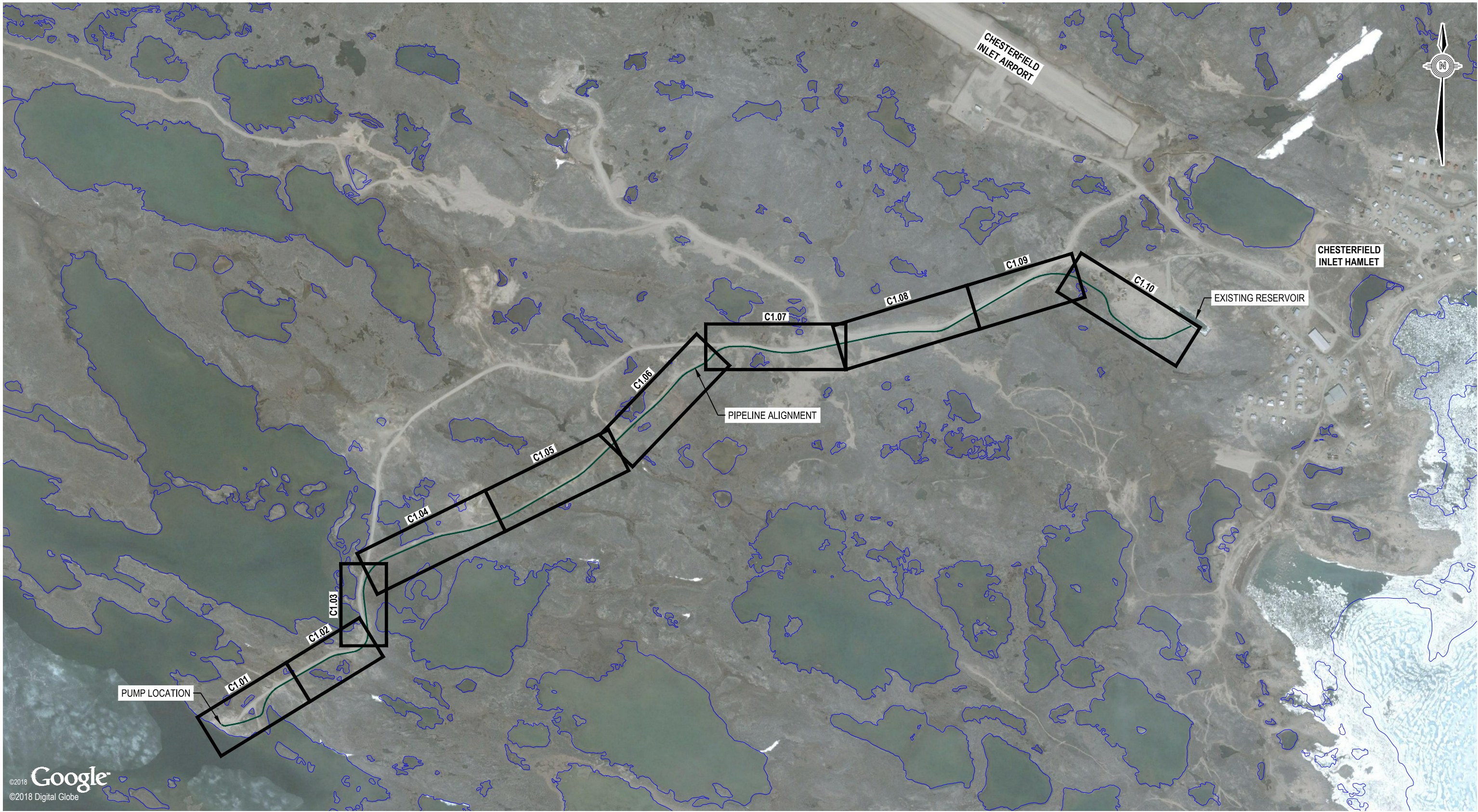


WATER TRANSMISSION LINE DESIGN
CHESTERFIELD INLET, NUNAVUT

GRAVEL SOURCE AND QUARRY LOCATIONS

PROJECT NO. WTRM03121-01	OFFICE VANC	DES DNM	CKD DNM	REV B	DRAWING
DATE March 5, 2019	SHEET No. of	DWN JDM	APP DNM	STATUS IFR	

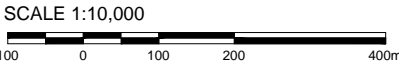
G1.03



LEGEND

NOTES

1. Survey completed by Apex Survey Solutions Ltd. on November 22, 2018.



D	4/10/19	JDM	DNM	DNM	100% DESIGN - ISSUED FOR REVIEW
C	3/5/19	JDM	DNM	DNM	100% DESIGN - ISSUED FOR REVIEW
B	1/31/19	JDM	DNM	DNM	50% DESIGN - ISSUED FOR REVIEW
A	1/17/19	JDM	DNM	DNM	50% DESIGN - ISSUED FOR REVIEW
NUM	DATE	DWN	CKD	APR	DESCRIPTION
REVISIONS					

PROFESSIONAL SEAL

CLIENT

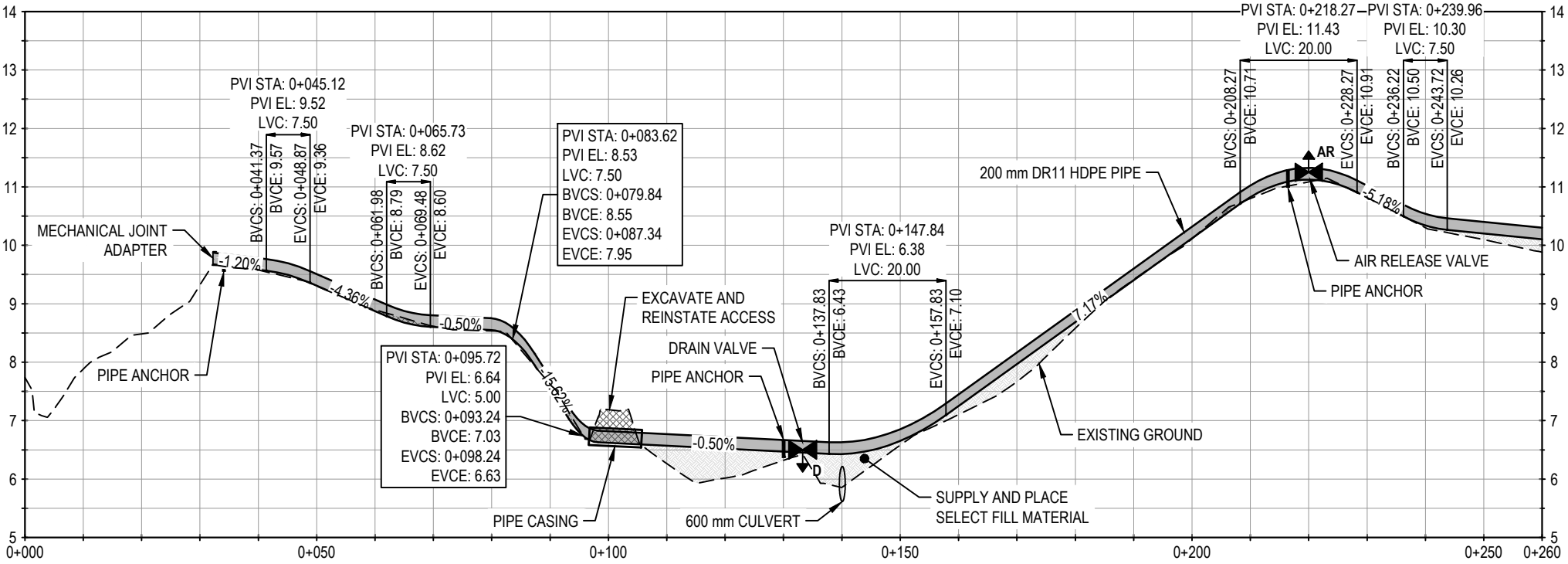
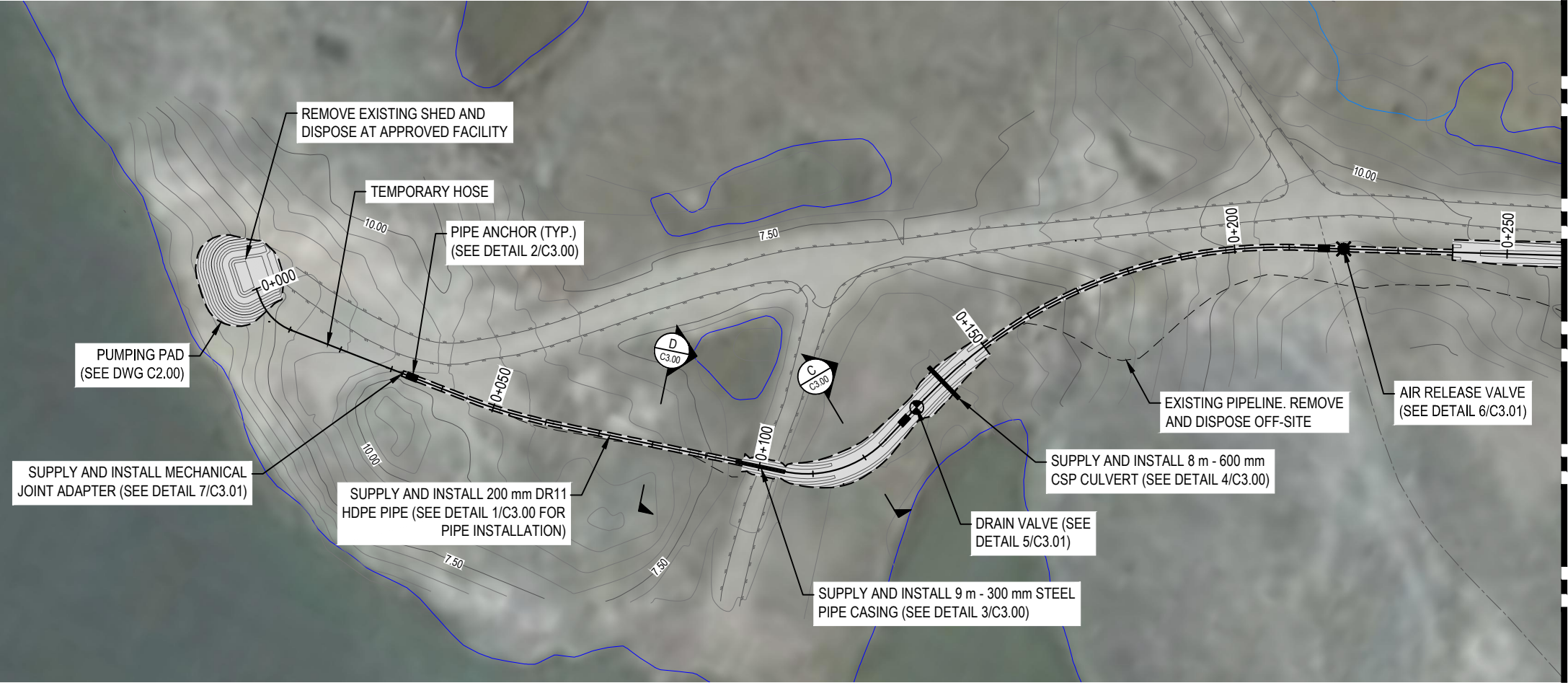


WATER TRANSMISSION LINE DESIGN
CHESTERFIELD INLET, NUNAVUT

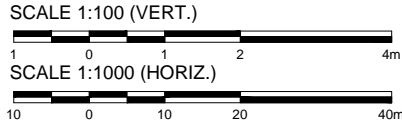
KEY PLAN

PROJECT NO.	OFFICE	DES	CKD	REV	DRAWING
WTRM03121-01	VANC	DNM	DNM	D	C1.00
DATE	SHEET No.	DWN	APP	STATUS	
April 10, 2019	of	JDM	DNM	IFR	

Q:\Vancouver\Drafting\Transportation\WTRM\WTRM03121-01\WTRM03121-01 - Chesterfield Design, Rev B.dwg [C1.01] April 10, 2019 - 10:18:56 am (BY: MANG, JUSTIN)



LEGEND



NOTES

- All dimensions are in meters unless noted otherwise.
- Profile view is exaggerated by 10 times vertically.

NUM	DATE	DWN	CKD	APR	DESCRIPTION
F	4/10/19	JDM	DNM	DNM	100% DESIGN - ISSUED FOR REVIEW
E	4/11/19	JDM	DNM	DNM	100% DESIGN - ISSUED FOR REVIEW
D	3/14/19	JDM	DNM	DNM	100% DESIGN - ISSUED FOR REVIEW
C	2/26/19	JDM	DNM	DNM	100% DESIGN - ISSUED FOR REVIEW
B	1/31/19	JDM	DNM	DNM	50% DESIGN - ISSUED FOR REVIEW
A	1/17/19	JDM	DNM	DNM	50% DESIGN - ISSUED FOR REVIEW

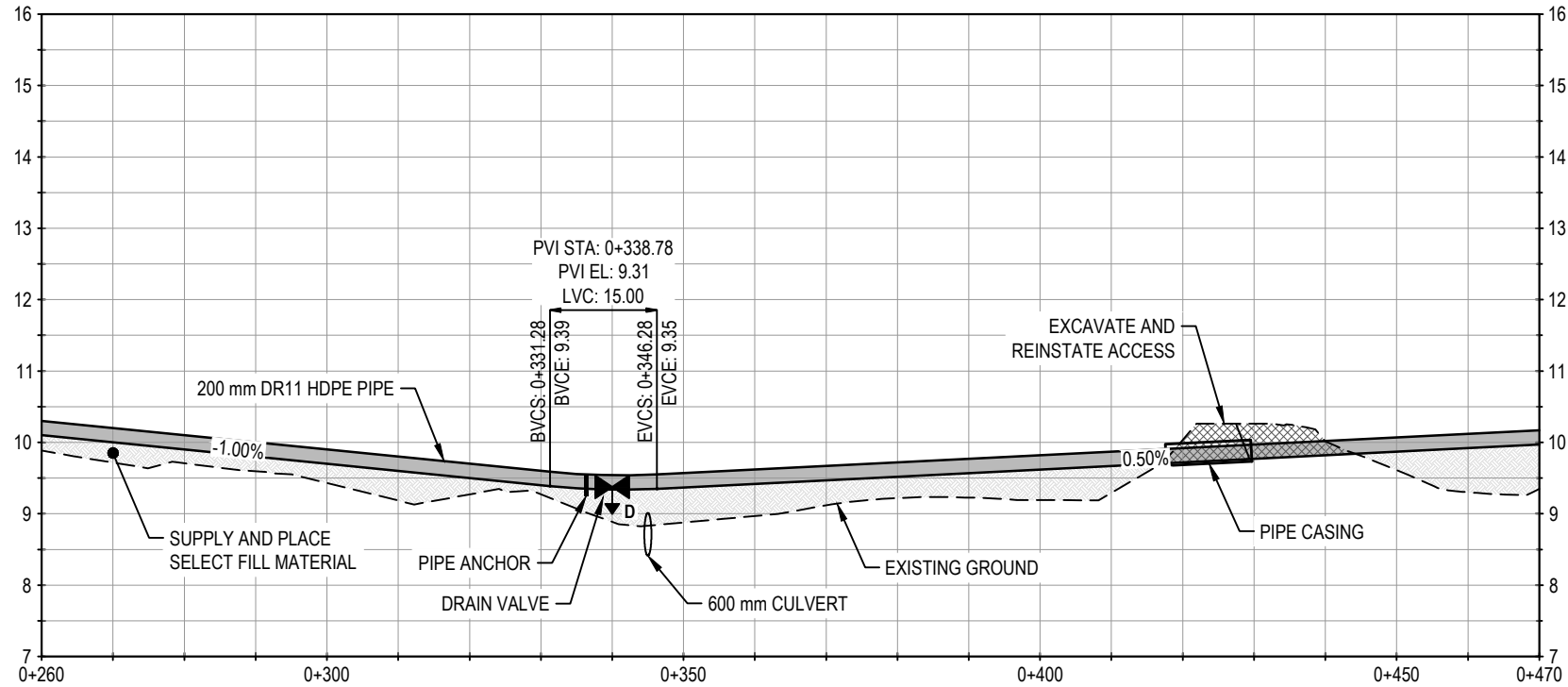
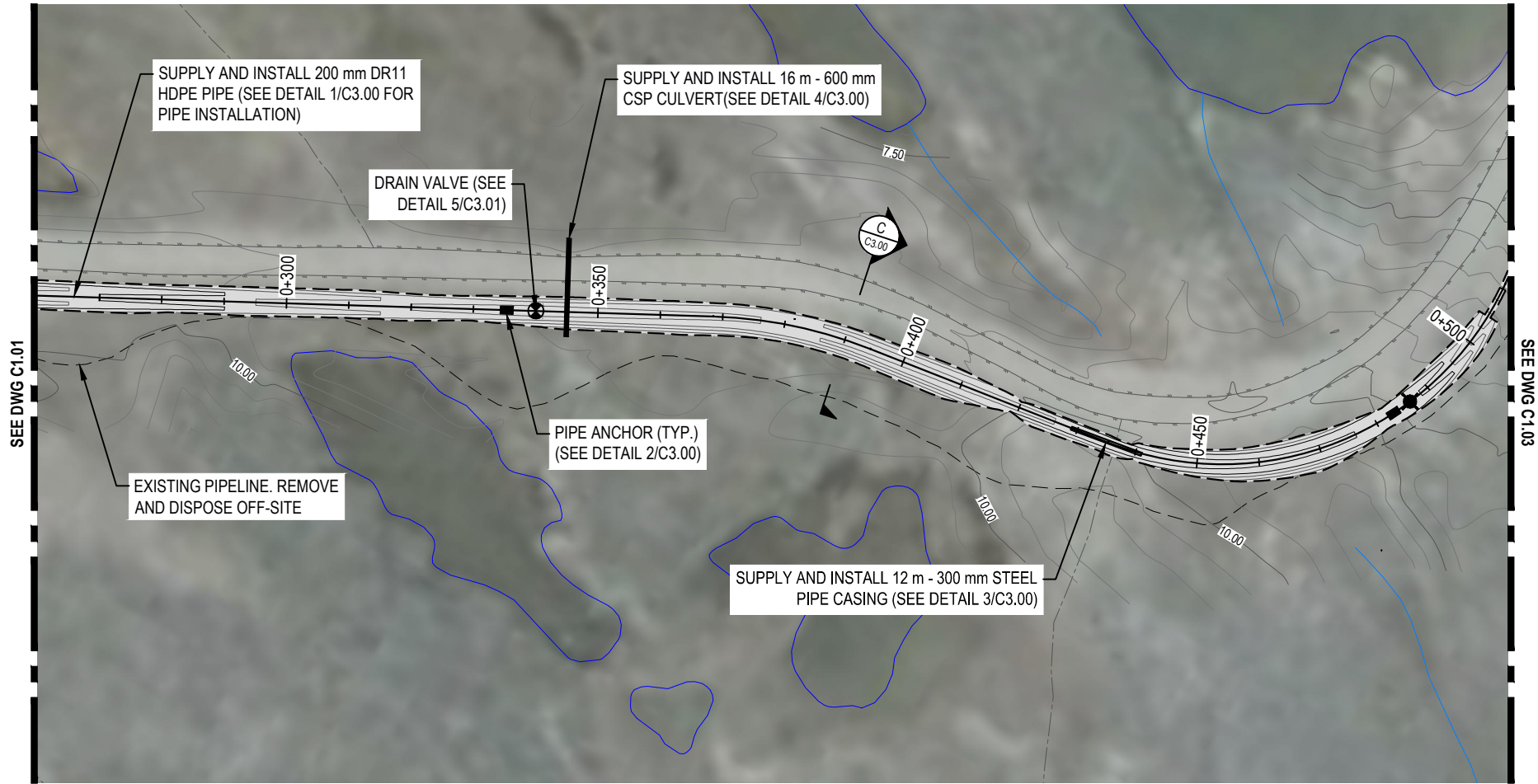
CLIENT



WATER TRANSMISSION LINE DESIGN
CHESTERFIELD INLET, NUNAVUT

PLAN AND PROFILE

PROJECT NO.	OFFICE	DES	CKD	REV	DRAWING
WTRM03121-01	VANC	DNM	DNM	F	C1.01
DATE	SHEET No.	DWN	APP	STATUS	
April 10, 2019	of	JDM	DNM	IFR	



LEGEND

SCALE 1:100 (VERT.)



SCALE 1:1000 (HORIZ.)



NOTES

- All dimensions are in meters unless noted otherwise.
- Profile view is exaggerated by 10 times vertically.

NUM	DATE	DWN	CKD	APR	DESCRIPTION
E	4/1/19	JDM	DNM	DNM	100% DESIGN - ISSUED FOR REVIEW
D	3/14/19	JDM	DNM	DNM	100% DESIGN - ISSUED FOR REVIEW
C	3/5/19	JDM	DNM	DNM	100% DESIGN - ISSUED FOR REVIEW
B	1/31/19	JDM	DNM	DNM	50% DESIGN - ISSUED FOR REVIEW
A	1/17/19	JDM	DNM	DNM	50% DESIGN - ISSUED FOR REVIEW

CLIENT

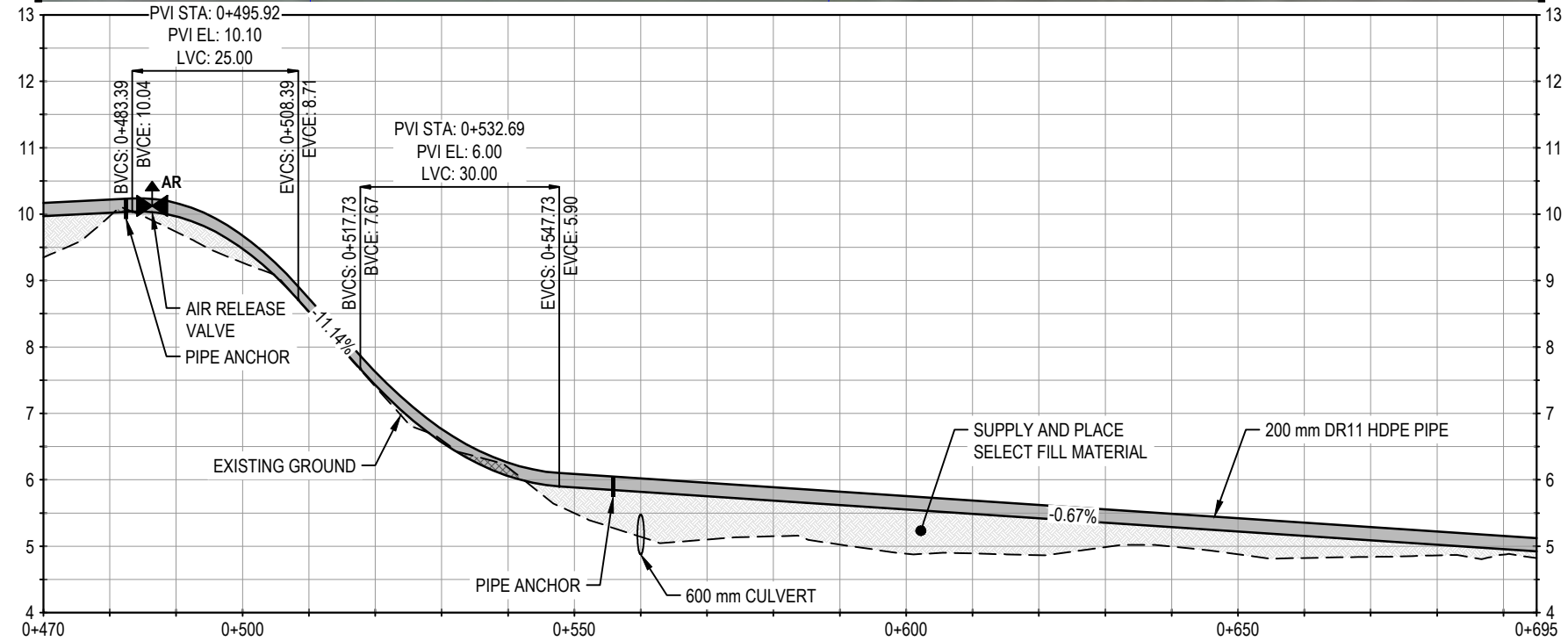
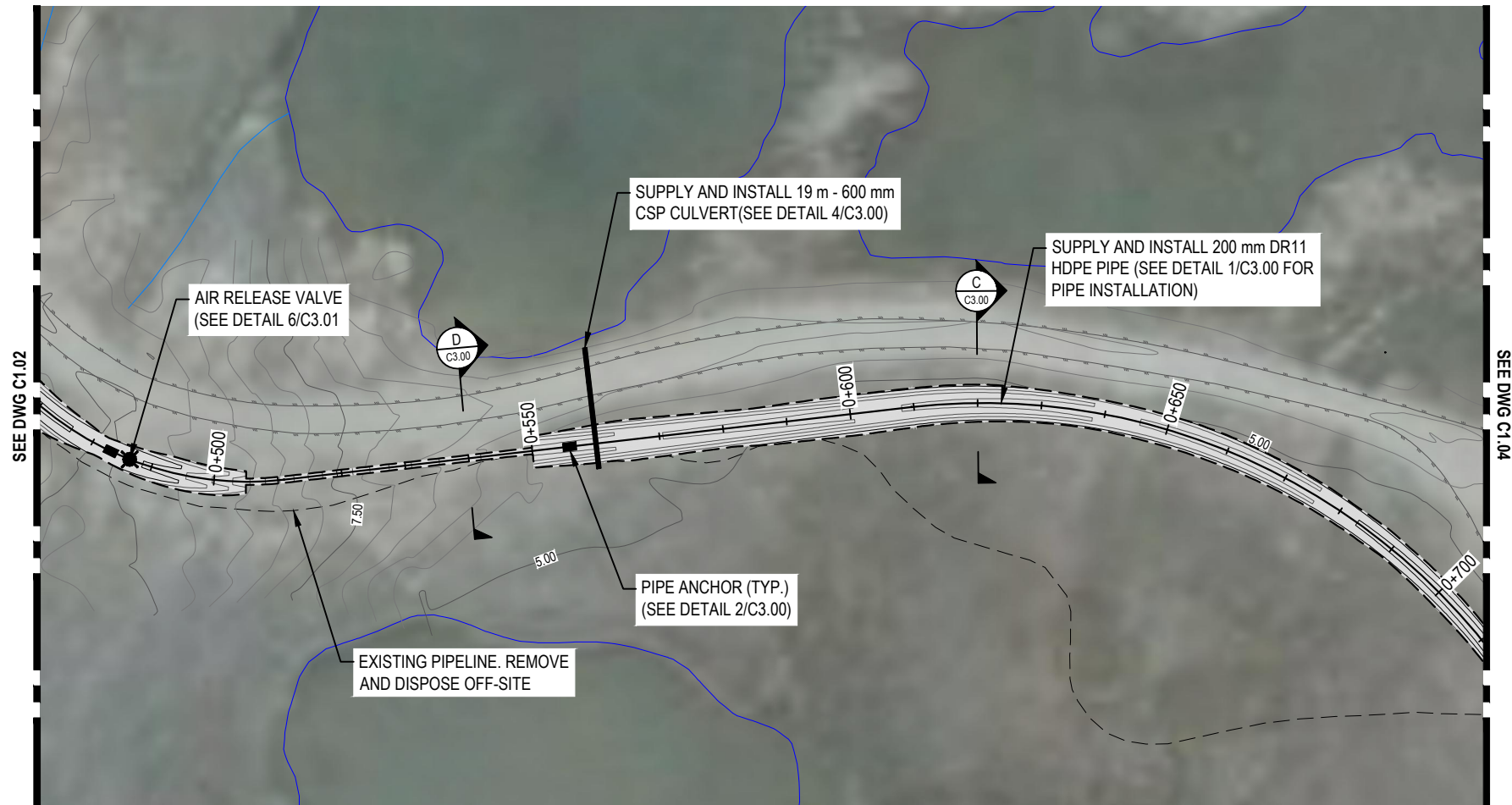


WATER TRANSMISSION LINE DESIGN
CHESTERFIELD INLET, NUNAVUT

PLAN AND PROFILE

PROJECT NO.	OFFICE	DES	CKD	REV	DRAWING
WTRM03121-01	VANC	DNM	DNM	E	C1.02
DATE	SHEET No.	DWN	APP	STATUS	
April 1, 2019	of	JDM	DNM	IFR	

Q:\Vancouver\Drafting\Transportation\WTRM\WTRM03121-01\WTRM03121-01 - Chesterfield Design, Rev B.dwg [C1.03] April 01, 2019 - 1:57:52 pm (BY: MANG, JUSTIN)



LEGEND

SCALE 1:100 (VERT.)



SCALE 1:1000 (HORIZ.)



NOTES

- All dimensions are in meters unless noted otherwise.
- Profile view is exaggerated by 10 times vertically.

NUM	DATE	DWN	CKD	APR	DESCRIPTION
E	4/1/19	JDM	DNM	DNM	100% DESIGN - ISSUED FOR REVIEW
D	3/14/19	JDM	DNM	DNM	100% DESIGN - ISSUED FOR REVIEW
C	3/5/19	JDM	DNM	DNM	100% DESIGN - ISSUED FOR REVIEW
B	1/31/19	JDM	DNM	DNM	50% DESIGN - ISSUED FOR REVIEW
A	1/17/19	JDM	DNM	DNM	50% DESIGN - ISSUED FOR REVIEW

CLIENT

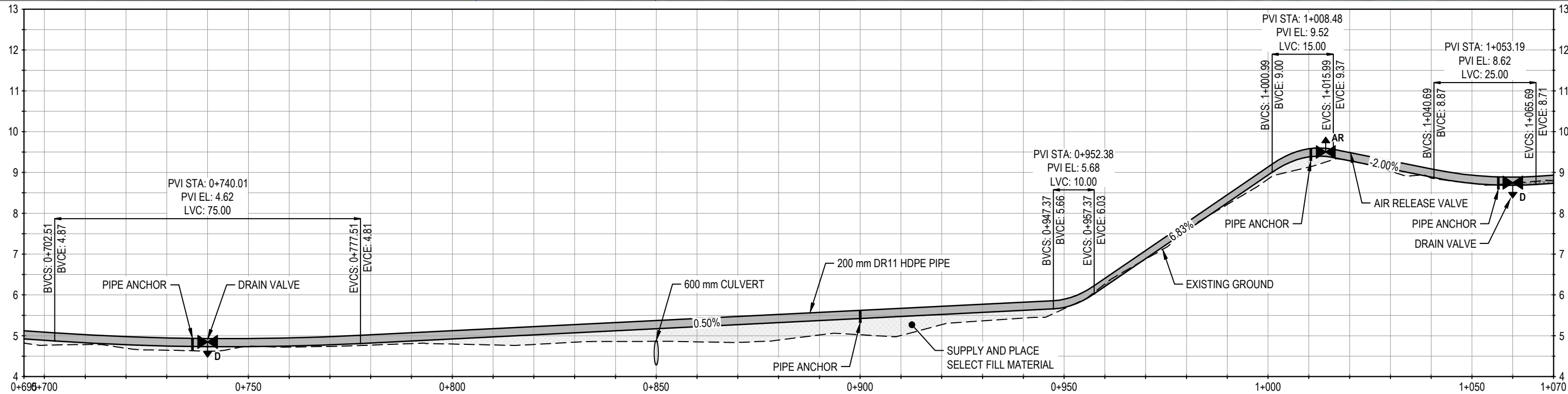


WATER TRANSMISSION LINE DESIGN CHESTERFIELD INLET, NUNAVUT

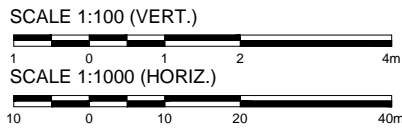
PLAN AND PROFILE

PROJECT NO.	OFFICE	DES	CKD	REV	DRAWING
WTRM03121-01	VANC	DNM	DNM	E	C1.03
DATE	SHEET No.	DWN	APP	STATUS	
April 1, 2019	of	JDM	DNM	IFR	

Q:\Vancouver\Drafting\Transportation\WTRM\WTRM03121-01\WTRM03121-01 - Chesterfield Design, Rev B.dwg [C1.04] April 02, 2019 - 12:51:33 pm (BY: MANG, JUSTIN)



LEGEND



NOTES

- All dimensions are in meters unless noted otherwise.
- Profile view is exaggerated by 10 times vertically.

NUM	DATE	DWN	CKD	APR	DESCRIPTION
E	4/1/19	JDM	DNM	DNM	100% DESIGN - ISSUED FOR REVIEW
D	3/14/19	JDM	DNM	DNM	100% DESIGN - ISSUED FOR REVIEW
C	3/5/19	JDM	DNM	DNM	100% DESIGN - ISSUED FOR REVIEW
B	1/31/19	JDM	DNM	DNM	50% DESIGN - ISSUED FOR REVIEW
A	1/17/19	JDM	DNM	DNM	50% DESIGN - ISSUED FOR REVIEW

CLIENT

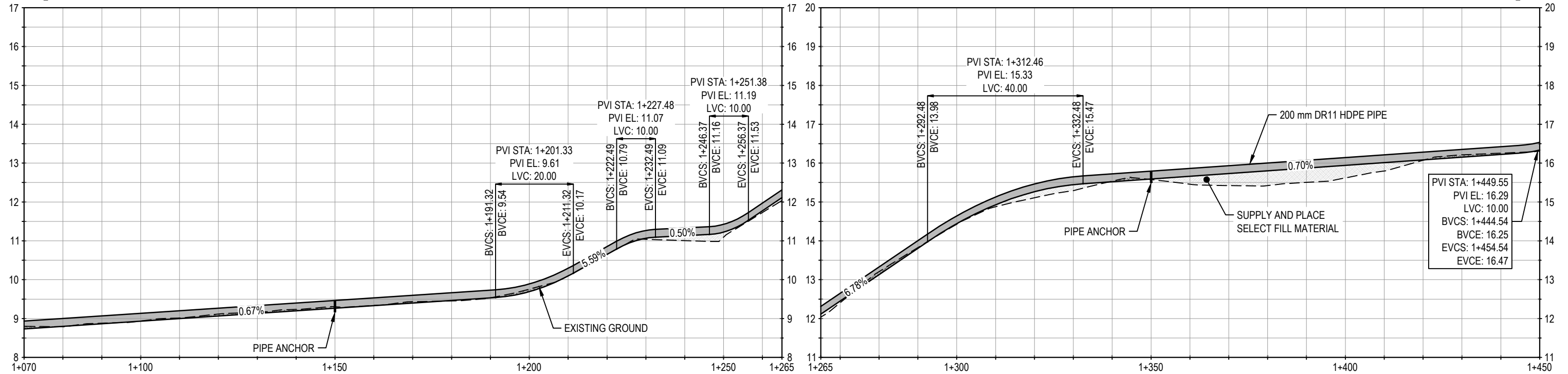
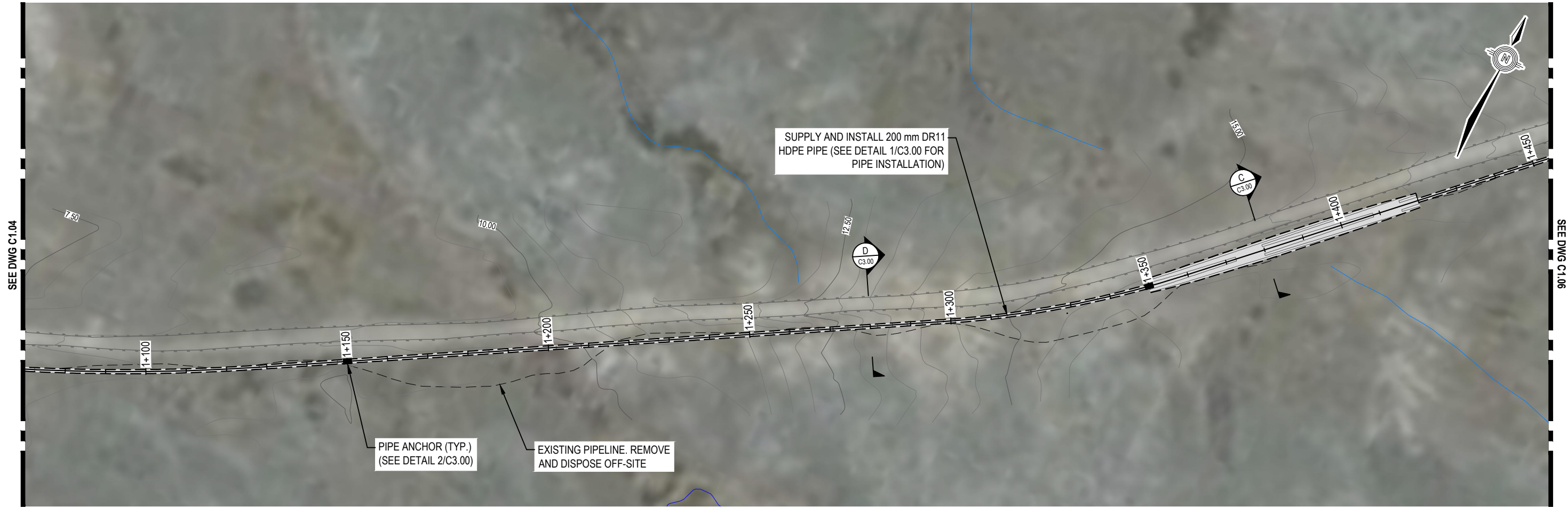


WATER TRANSMISSION LINE DESIGN CHESTERFIELD INLET, NUNAVUT

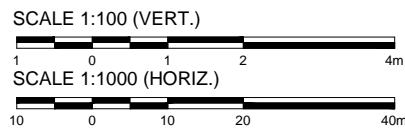
PLAN AND PROFILE

PROJECT NO.	OFFICE	DES	CKD	REV	DRAWING
WTRM03121-01	VANC	DNM	DNM	E	C1.04
DATE	SHEET No.	DWN	APP	STATUS	
April 1, 2019	of	JDM	DNM	IFR	

Q:\Vancouver\Drafting\Transportation\WTRM\WTRM03121-01\WTRM03121-01 - Chesterfield Design, Rev B.dwg [C1.05] April 01, 2019 - 1:58:48 pm (BY: MANG, JUSTIN)



LEGEND



NOTES

- All dimensions are in meters unless noted otherwise.
- Profile view is exaggerated by 10 times vertically.

NUM	DATE	DWN	CKD	APR	DESCRIPTION
E	4/1/19	JDM	DNM	DNM	100% DESIGN - ISSUED FOR REVIEW
D	3/14/19	JDM	DNM	DNM	100% DESIGN - ISSUED FOR REVIEW
C	3/5/19	JDM	DNM	DNM	100% DESIGN - ISSUED FOR REVIEW
B	1/31/19	JDM	DNM	DNM	50% DESIGN - ISSUED FOR REVIEW
A	1/17/19	JDM	DNM	DNM	50% DESIGN - ISSUED FOR REVIEW

CLIENT

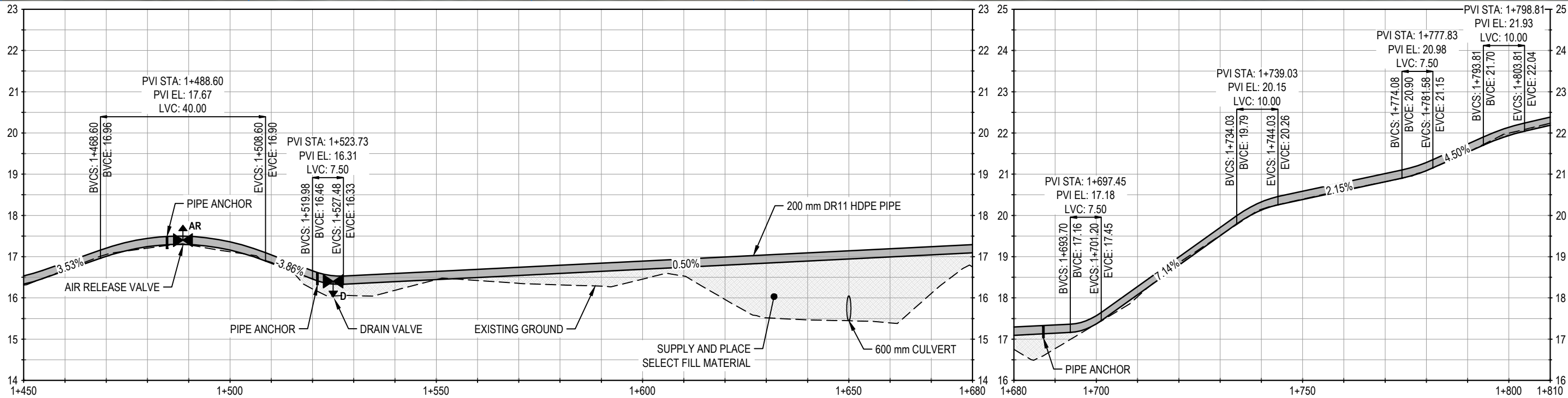
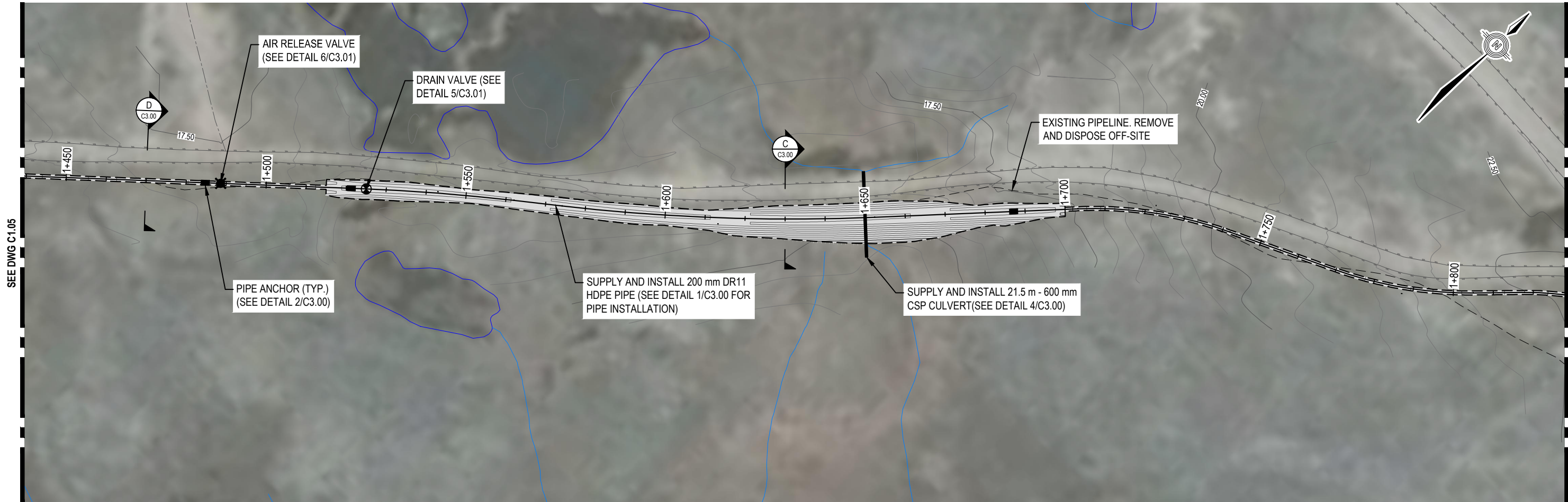


WATER TRANSMISSION LINE DESIGN CHESTERFIELD INLET, NUNAVUT

PLAN AND PROFILE

PROJECT NO.	OFFICE	DES	CKD	REV	DRAWING
WTRM03121-01	VANC	DNM	DNM	E	C1.05
DATE	SHEET No.	DWN	APP	STATUS	
April 1, 2019	of	JDM	DNM	IFR	

Q:\Vancouver\Drafting\Transportation\WTRM\WTRM03121-01\WTRM03121-01 - Chesterfield Design, Rev B.dwg [C1.06] April 01, 2019 - 1:59:27 pm (BY: MANG, JUSTIN)



LEGEND

SCALE 1:100 (VERT.)



SCALE 1:1000 (HORIZ.)



NOTES

- All dimensions are in meters unless noted otherwise.
- Profile view is exaggerated by 10 times vertically.

NUM	DATE	DWN	CKD	APR	DESCRIPTION
E	4/1/19	JDM	DNM	DNM	100% DESIGN - ISSUED FOR REVIEW
D	3/14/19	JDM	DNM	DNM	100% DESIGN - ISSUED FOR REVIEW
C	3/5/19	JDM	DNM	DNM	100% DESIGN - ISSUED FOR REVIEW
B	1/31/19	JDM	DNM	DNM	50% DESIGN - ISSUED FOR REVIEW
A	1/17/19	JDM	DNM	DNM	50% DESIGN - ISSUED FOR REVIEW

CLIENT

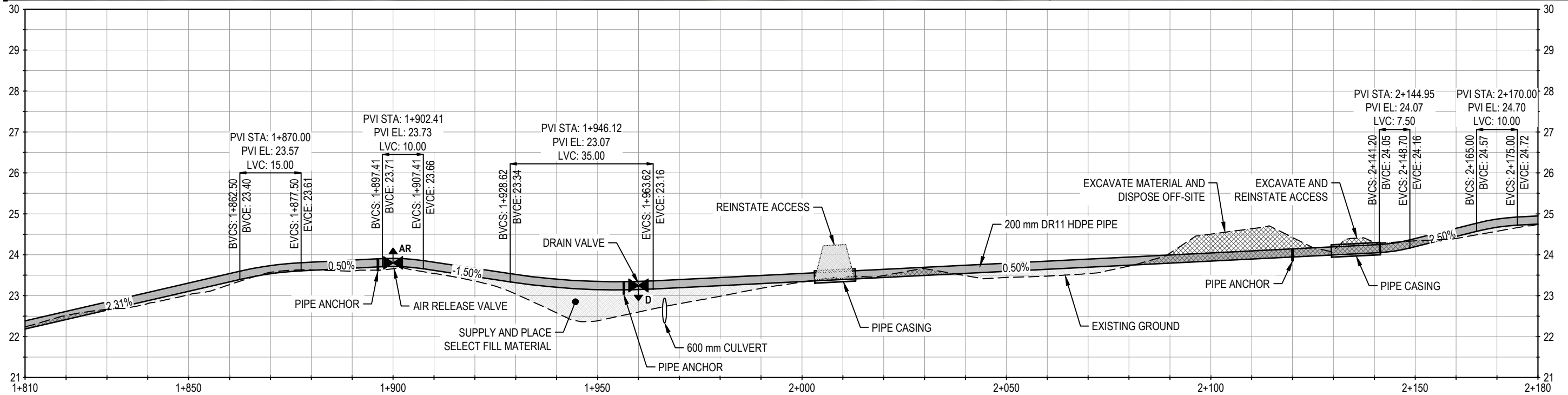
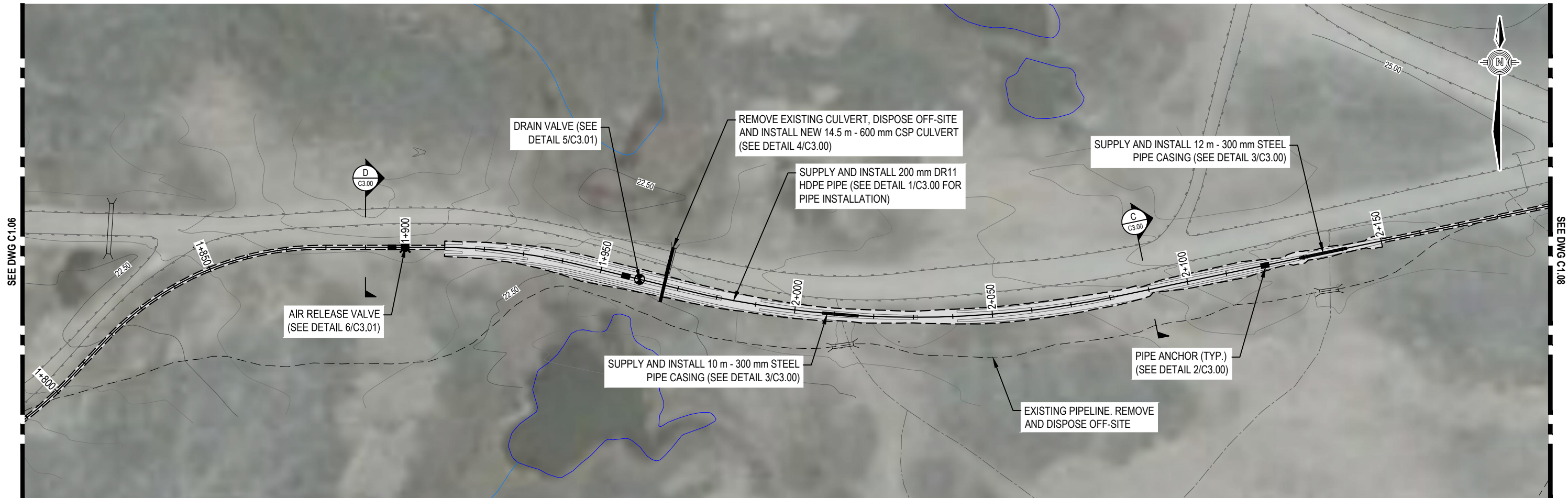


WATER TRANSMISSION LINE DESIGN CHESTERFIELD INLET, NUNAVUT

PLAN AND PROFILE

PROJECT NO.	OFFICE	DES	CKD	REV	DRAWING
WTRM03121-01	VANC	DNM	DNM	D	C1.06
DATE	SHEET No.	DWN	APP	STATUS	
April 1, 2019	of	JDM	DNM	IFR	

Q:\Vancouver\Drafting\Transportation\WTRM\WTRM03121-01 - Chesterfield Design, Rev B.dwg [C1.07] April 02, 2019 - 1:13:19 pm (BY: MANG, JUSTIN)



LEGEND

SCALE 1:100 (VERT.)



SCALE 1:1000 (HORIZ.)



NOTES

- All dimensions are in meters unless noted otherwise.
- Profile view is exaggerated by 10 times vertically.

NUM	DATE	DWN	CKD	APR	DESCRIPTION
E	4/1/19	JDM	DNM	DNM	100% DESIGN - ISSUED FOR REVIEW
D	3/14/19	JDM	DNM	DNM	100% DESIGN - ISSUED FOR REVIEW
C	3/5/19	JDM	DNM	DNM	100% DESIGN - ISSUED FOR REVIEW
B	1/31/19	JDM	DNM	DNM	50% DESIGN - ISSUED FOR REVIEW
A	1/17/19	JDM	DNM	DNM	50% DESIGN - ISSUED FOR REVIEW

CLIENT

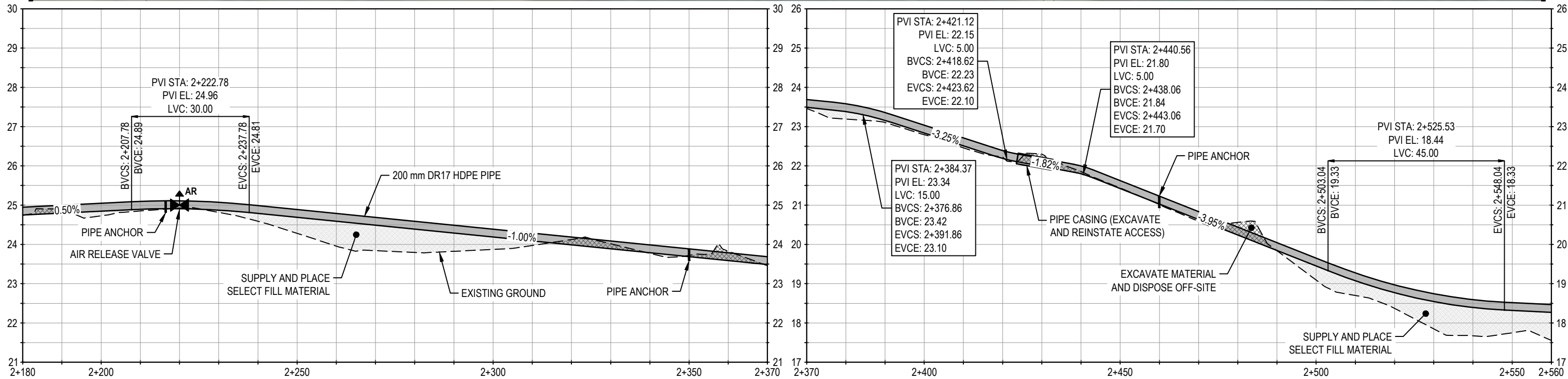
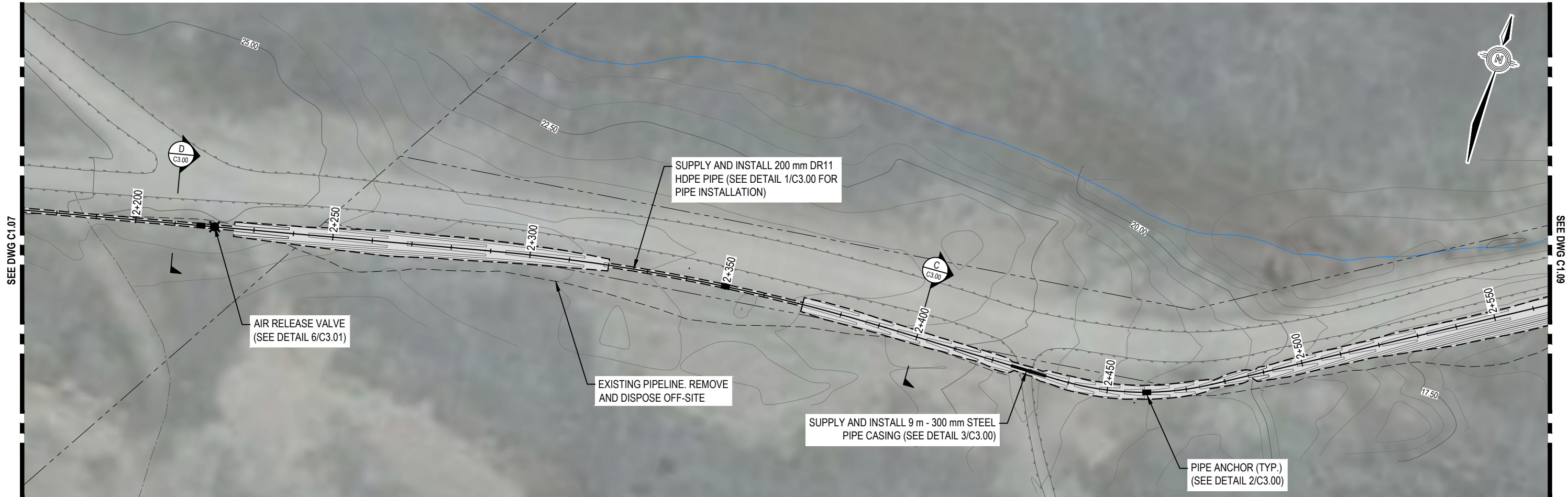


WATER TRANSMISSION LINE DESIGN CHESTERFIELD INLET, NUNAVUT

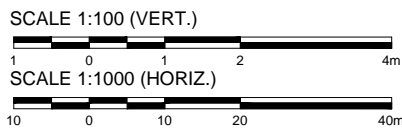
PLAN AND PROFILE

PROJECT NO.	OFFICE	DES	CKD	REV	DRAWING
WTRM03121-01	VANC	DNM	DNM	E	C1.07
DATE	SHEET No.	DWN	APP	STATUS	
April 1, 2019	of	JDM	DNM	IFR	

Q:\Vancouver\Drafting\Transportation\WTRM\WTRM03121-01 - Chesterfield Design, Rev B.dwg [C1.08] April 01, 2019 - 2:00:32 pm (BY: MANG, JUSTIN)



LEGEND



NOTES

- All dimensions are in meters unless noted otherwise.
- Profile view is exaggerated by 10 times vertically.

NUM	DATE	DWN	CKD	APR	DESCRIPTION
E	4/1/19	JDM	DNM	DNM	100% DESIGN - ISSUED FOR REVIEW
D	3/14/19	JDM	DNM	DNM	100% DESIGN - ISSUED FOR REVIEW
C	3/5/19	JDM	DNM	DNM	100% DESIGN - ISSUED FOR REVIEW
B	1/31/19	JDM	DNM	DNM	50% DESIGN - ISSUED FOR REVIEW
A	1/17/19	JDM	DNM	DNM	50% DESIGN - ISSUED FOR REVIEW

CLIENT

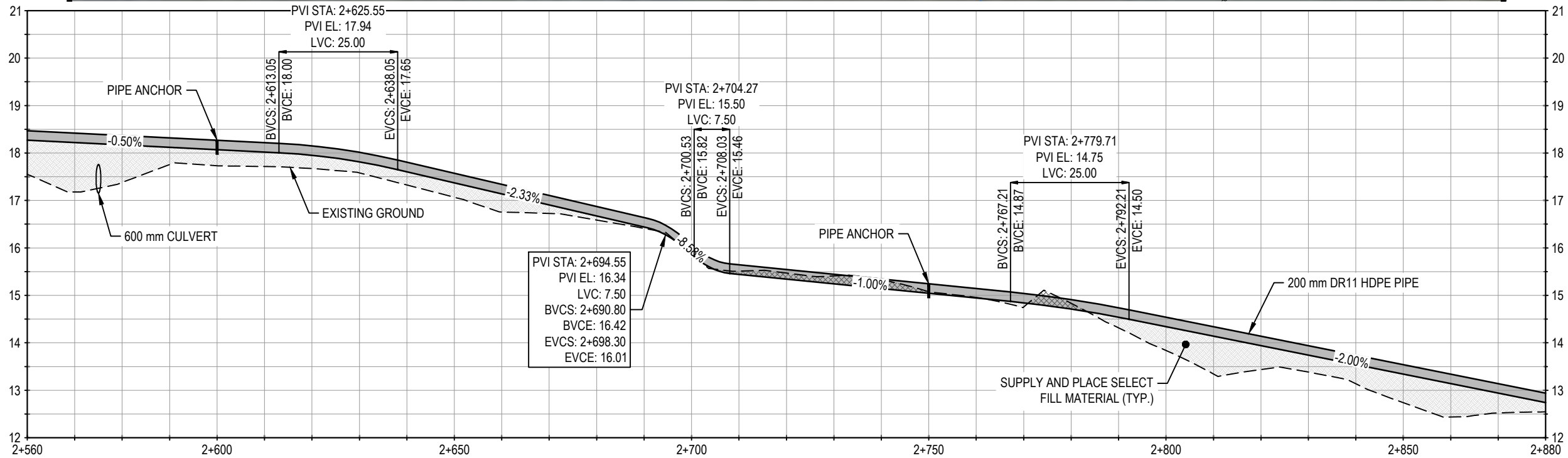
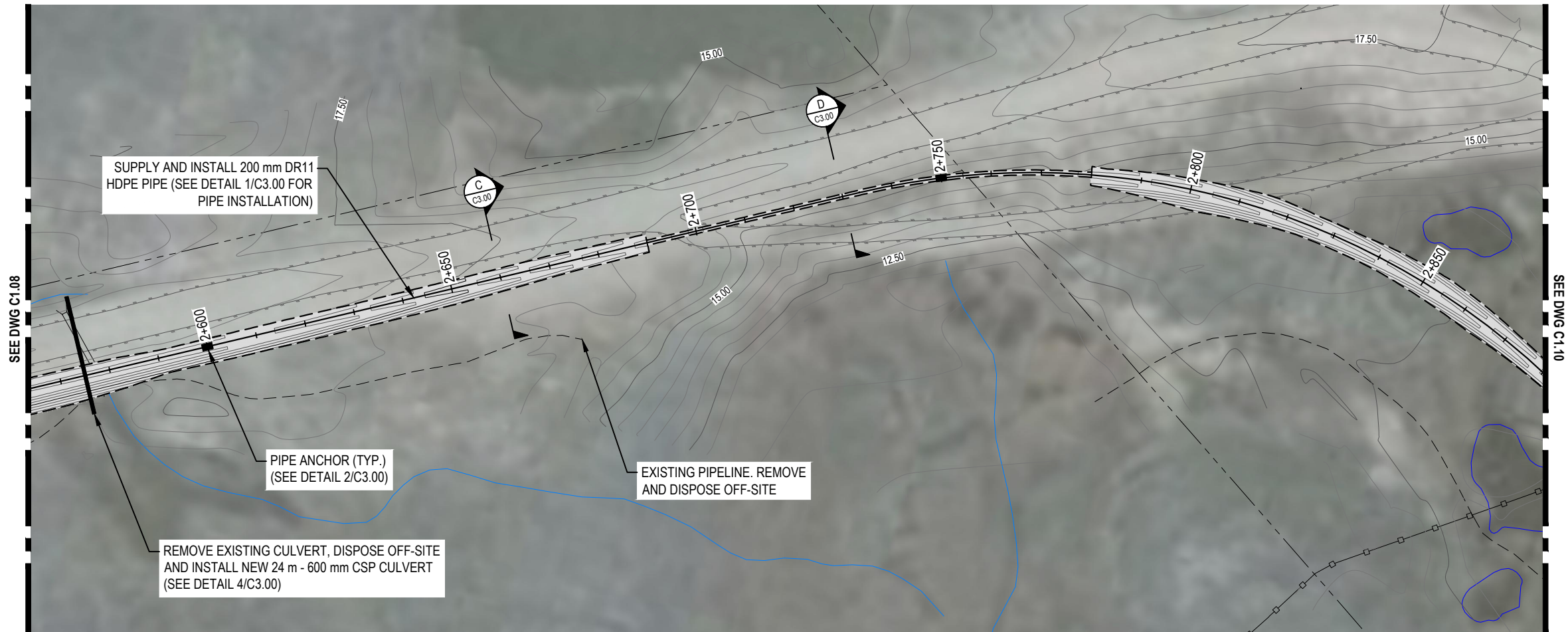


WATER TRANSMISSION LINE DESIGN CHESTERFIELD INLET, NUNAVUT

PLAN AND PROFILE

PROJECT NO.	OFFICE	DES	CKD	REV	DRAWING
WTRM03121-01	VANC	DNM	DNM	E	C1.08
DATE	SHEET No.	DWN	APP	STATUS	
April 1, 2019	of	JDM	DNM	IFR	

Q:\Vancouver\Drafting\Transportation\WTRM03121-01\WTRM03121-01 - Chesterfield Design, Rev B.dwg [C1.09] April 01, 2019 - 2:01:03 pm (BY: MANG, JUSTIN)



LEGEND

SCALE 1:100 (VERT.)



SCALE 1:1000 (HORIZ.)



NOTES

- All dimensions are in meters unless noted otherwise.
- Profile view is exaggerated by 10 times vertically.

NUM	DATE	DWN	CKD	APR	DESCRIPTION
E	4/1/19	JDM	DNM	DNM	100% DESIGN - ISSUED FOR REVIEW
D	3/14/19	JDM	DNM	DNM	100% DESIGN - ISSUED FOR REVIEW
C	3/5/19	JDM	DNM	DNM	100% DESIGN - ISSUED FOR REVIEW
B	1/31/19	JDM	DNM	DNM	50% DESIGN - ISSUED FOR REVIEW
A	1/17/19	JDM	DNM	DNM	50% DESIGN - ISSUED FOR REVIEW

CLIENT

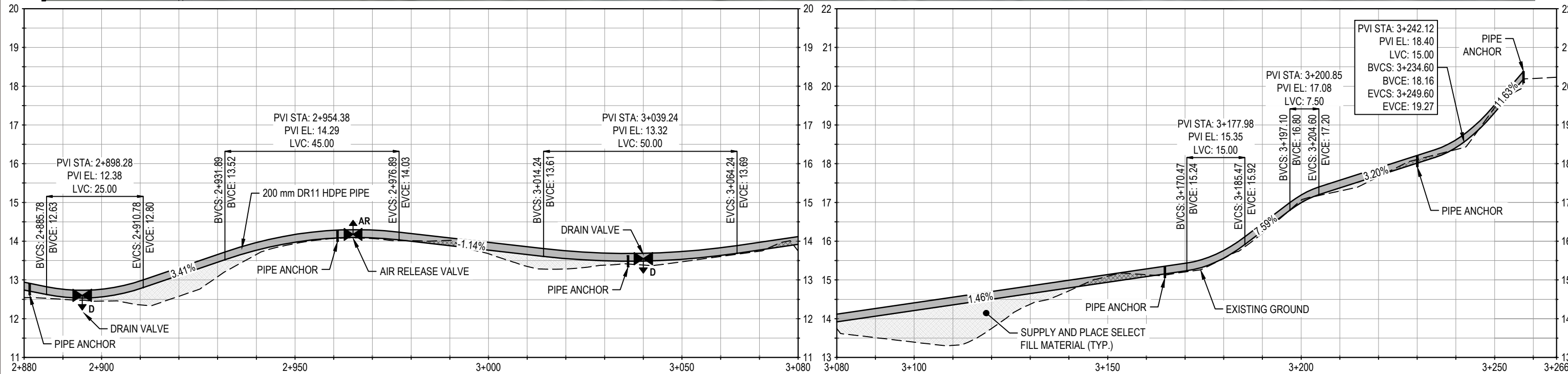


WATER TRANSMISSION LINE DESIGN CHESTERFIELD INLET, NUNAVUT

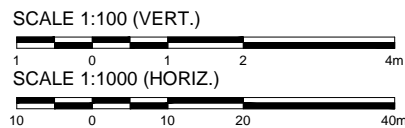
PLAN AND PROFILE

PROJECT NO.	OFFICE	DES	CKD	REV	DRAWING
WTRM03121-01	VANC	DNM	DNM	E	C1.09
DATE	SHEET No.	DWN	APP	STATUS	
April 1, 2019	of	JDM	DNM	IFR	

Q:\Vancouver\Drafting\Transportation\WTRM03121-01\WTRM03121-01 - Chesterfield Design, Rev B.dwg [C1.10] April 01, 2019 - 2:01:36 pm (BY: MANG, JUSTIN)



LEGEND



NOTES

- All dimensions are in meters unless noted otherwise.
- Profile view is exaggerated by 10 times vertically.

NUM	DATE	DWN	CKD	APR	DESCRIPTION
E	4/1/19	JDM	DNM	DNM	100% DESIGN - ISSUED FOR REVIEW
D	3/14/19	JDM	DNM	DNM	100% DESIGN - ISSUED FOR REVIEW
C	3/5/19	JDM	DNM	DNM	100% DESIGN - ISSUED FOR REVIEW
B	1/31/19	JDM	DNM	DNM	50% DESIGN - ISSUED FOR REVIEW
A	1/17/19	JDM	DNM	DNM	50% DESIGN - ISSUED FOR REVIEW

CLIENT

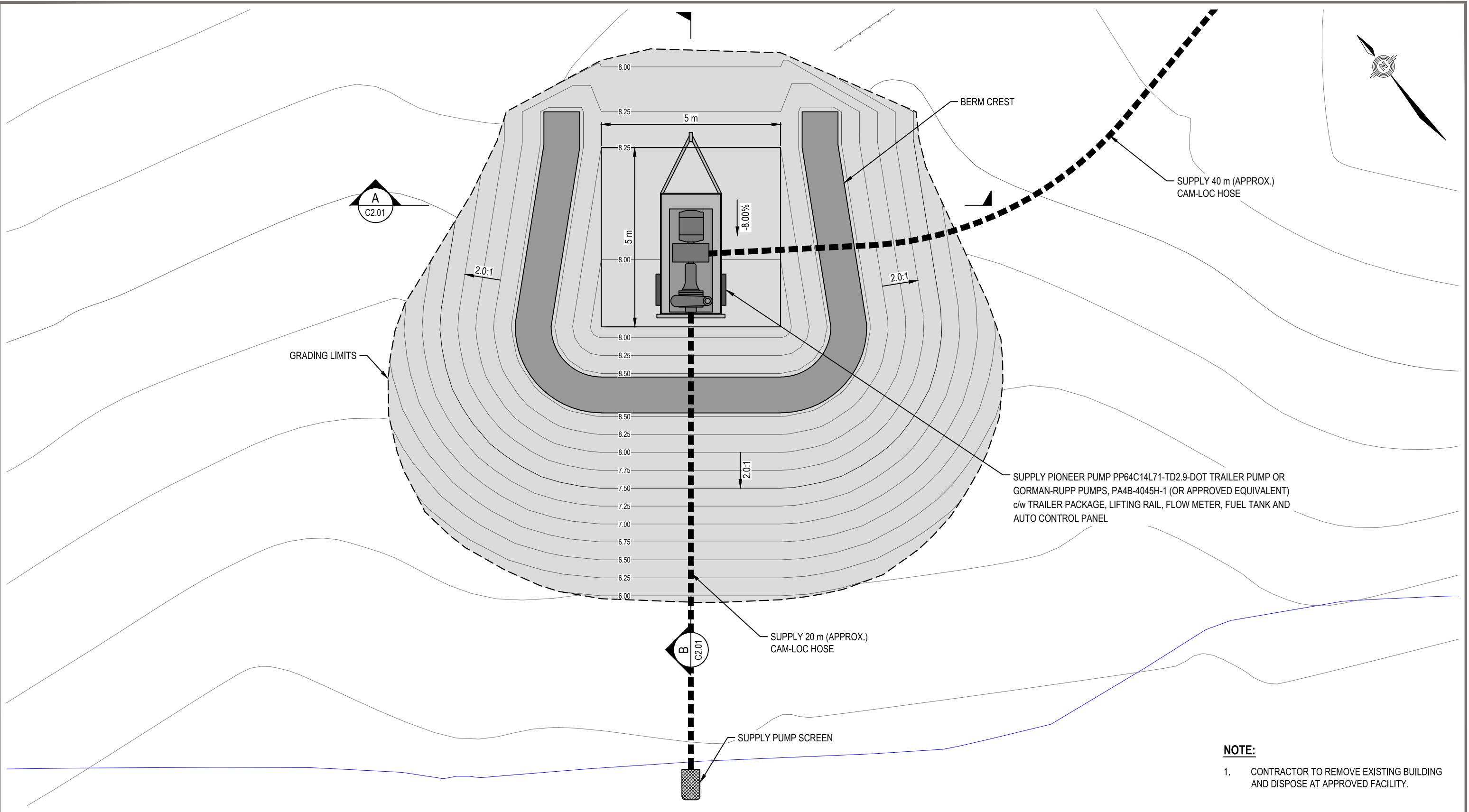


WATER TRANSMISSION LINE DESIGN
CHESTERFIELD INLET, NUNAVUT

PLAN AND PROFILE

PROJECT NO.	OFFICE	DES	CKD	REV	DRAWING
WTRM03121-01	VANC	DNM	DNM	E	C1.10
DATE	SHEET No. of	DWN	APP	STATUS	
April 1, 2019		JDM	DNM	IFR	

Q:\Vancouver\Drafting\Transportation\WTRM\WTRM031214-01\WTRM031214-01 - Chesterfield Design, Rev B.dwg [C2.00] April 10, 2019 - 1:53:24 pm (BY: MANG, JUSTIN)



LEGEND

SCALE 1:100


1 0 1 2 4m


NOTES

NUM	DATE	DWN	CKD	APR	DESCRIPTION
E	4/10/19	JDM	DNM	DNM	100% DESIGN - ISSUED FOR REVIEW
D	4/11/19	JDM	DNM	DNM	100% DESIGN - ISSUED FOR REVIEW
C	3/14/19	JDM	DNM	DNM	100% DESIGN - ISSUED FOR REVIEW
B	3/5/19	JDM	DNM	DNM	100% DESIGN - ISSUED FOR REVIEW
A	1/31/19	JDM	DNM	DNM	50% DESIGN - ISSUED FOR REVIEW

REVISIONS

CLIENT





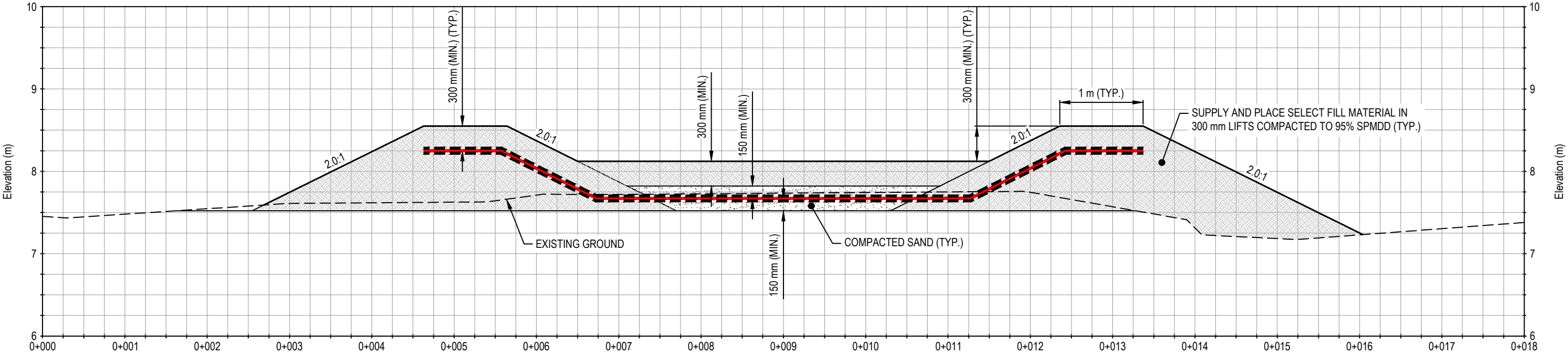
**WATER TRANSMISSION LINE DESIGN
CHESTERFIELD INLET, NUNAVUT**

**PUMPING PAD
PLAN**

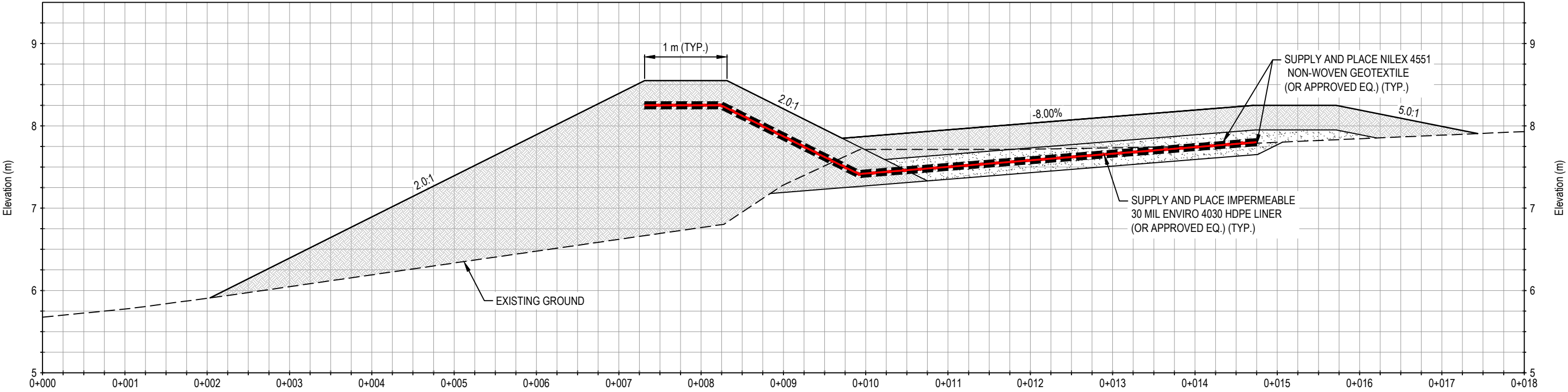
PROJECT NO.	OFFICE	DES	CKD	REV	DRAWING
WTRM03121-01	VANC	DNM	DNM	E	C2.00

DATE	SHEET No. of	DWN	APP	STATUS
April 10, 2019		JDM	DNM	IFR

Q:\Vancouver\Drafting\Transportation\WTRM\WTRM03121-01\WTRM03121-01 - Chesterfield Design, Rev B.dwg [C2.01] April 01, 2019 - 2:03:58 pm (BY: MANG, JUSTIN)

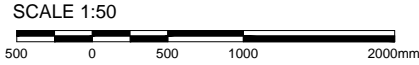


A SECTION
C2.01 SCALE: 1:50



B SECTION
C2.01 SCALE: 1:50

LEGEND



NOTES

NUM	DATE	DWN	CKD	APR	DESCRIPTION
D	4/1/19	JDM	DNM	DNM	100% DESIGN - ISSUED FOR REVIEW
C	3/14/19	JDM	DNM	DNM	100% DESIGN - ISSUED FOR REVIEW
B	3/5/19	JDM	DNM	DNM	100% DESIGN - ISSUED FOR REVIEW
A	1/31/19	JDM	DNM	DNM	50% DESIGN - ISSUED FOR REVIEW

CLIENT



WATER TRANSMISSION LINE DESIGN
CHESTERFIELD INLET, NUNAVUT

PUMPING PAD
SECTIONS

PROJECT NO.	OFFICE	DES	CKD	REV	DRAWING
WTRM03121-01	VANC	DNM	DNM	D	C2.01
DATE	SHEET No. of	DWN	APP	STATUS	
April 1, 2019		JDM	DNM	IFR	

