



(867) 975-6497
 (867) 975-5305
www.gov.nu.ca

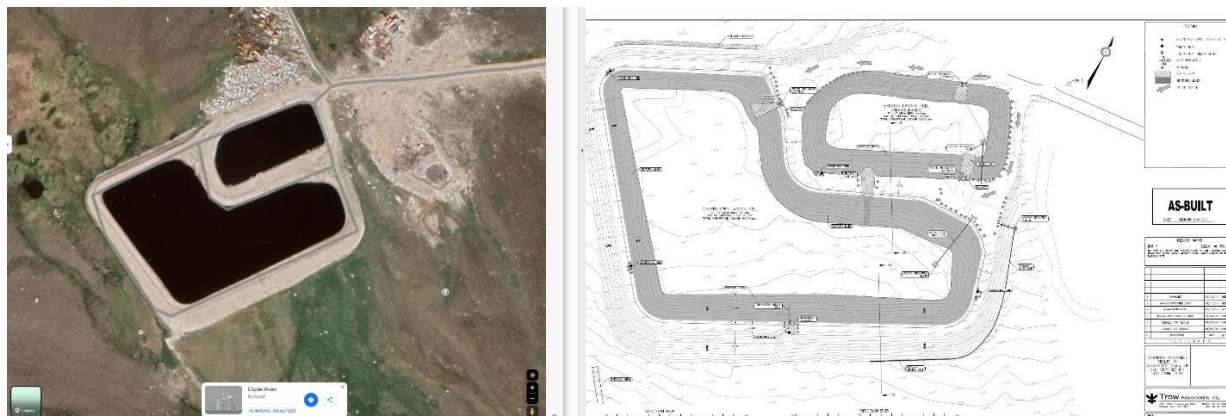


Figure 1: Clyde River Sewage Lagoon

Both sewage lagoon cells in Clyde River have filled to the top of the berms (see Figures 2 and 3). The sewage lagoon is designed for a pump-decant during the ice-free summer period to the filter strip wetlands area. In order to lower effluent volumes to 1.0 m freeboard, 3 to 4 days of effluent pumping is projected dependent on weather conditions affecting the pumping operations.



1(867) 975-6497
 1(867) 975-5305
www.gov.nu.ca