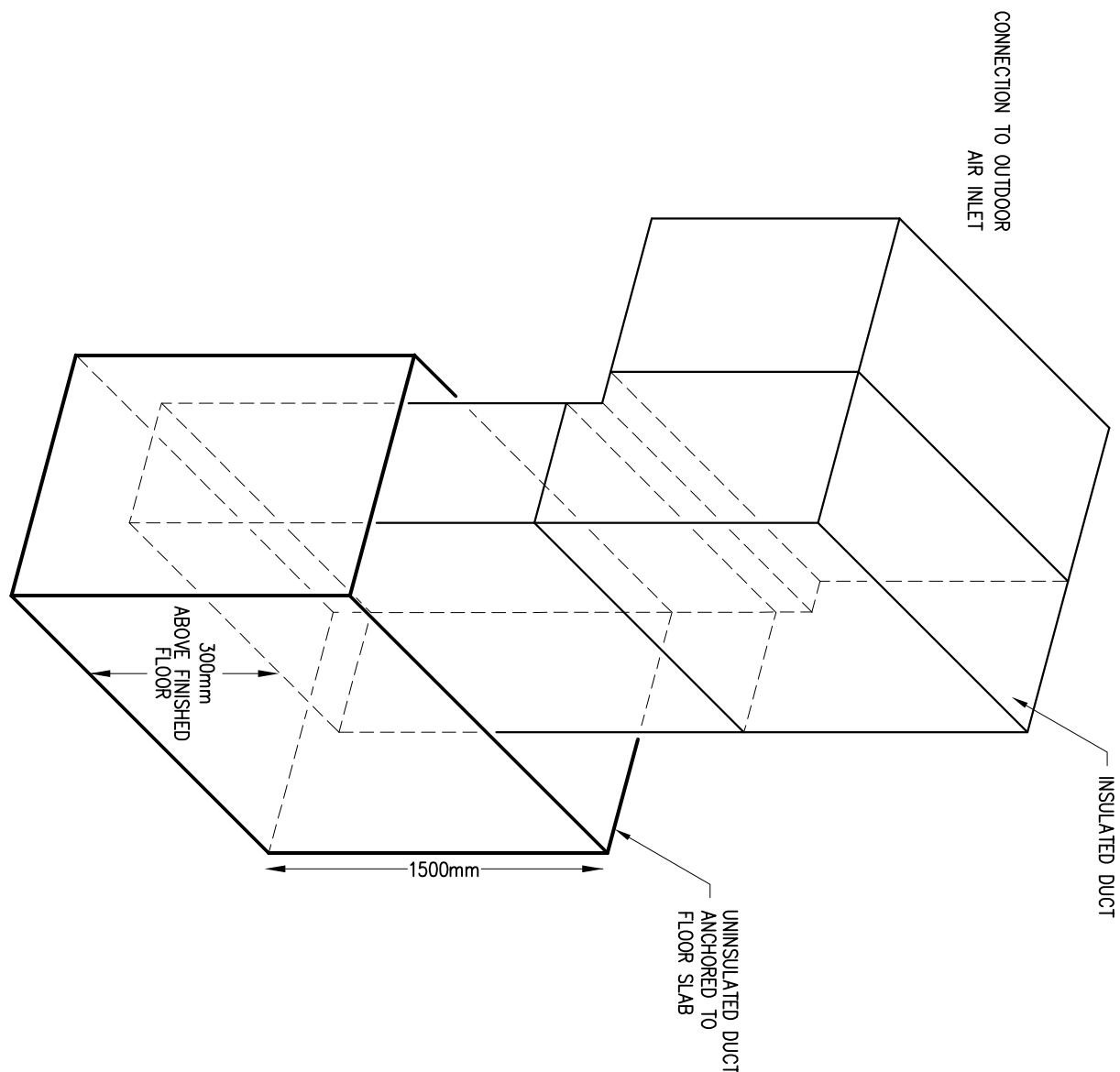
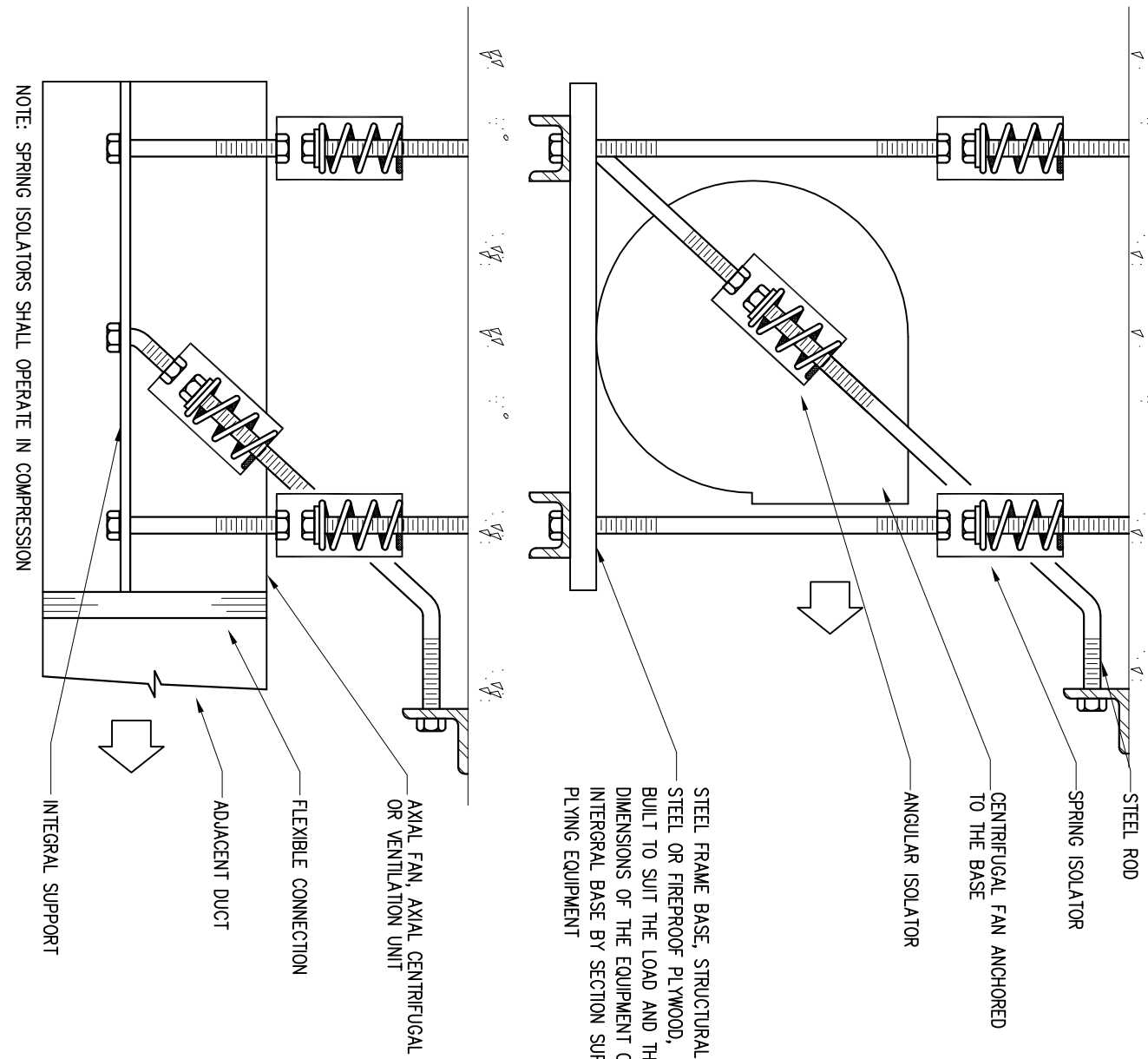
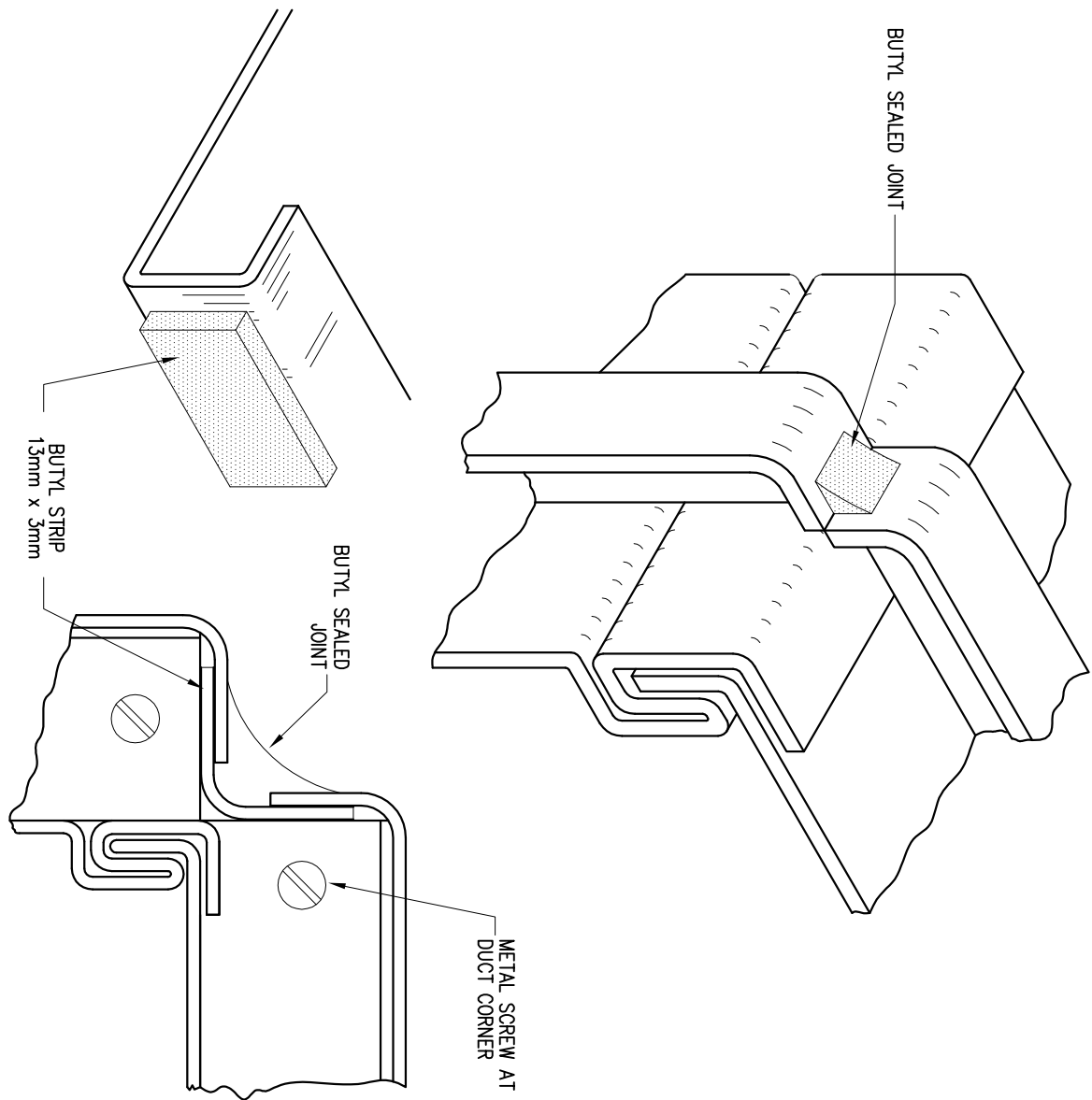


| DIMENSIONS<br>mm (in) | SHEET<br>THICKNESS<br>mm (CAL. US) | JOINT<br>TYPE             | h <sub>0</sub><br>(in) | X <sub>0</sub><br>(in) | STEEL ANGLE mm |             |
|-----------------------|------------------------------------|---------------------------|------------------------|------------------------|----------------|-------------|
|                       |                                    |                           |                        |                        | CENTER         | END         |
| ≤ 350                 | 0.551                              | THREE<br>SIP <sup>a</sup> | 2400                   | 2400                   | -              | -           |
| 350 A 250             | 0.719                              | "                         | 25                     | 146                    | -              | -           |
| 350 A 250             | 0.853                              | "                         | 35                     | 170                    | -              | -           |
| (32 A 54)             | (22)                               | "                         | 1-1/2                  | (146)                  | -              | -           |
| 350 A 1500            | 1.068                              | "                         | 35                     | 146                    | 35 x 35 x 3    | 35 x 35 x 3 |
| (36 A 84)             | (26)                               | "                         | 1-1/2                  | (146)                  | -              | -           |
| 350 A 1500            | 1.202                              | "                         | 35                     | 146                    | 35 x 35 x 3    | 35 x 35 x 3 |
| (36 A 84)             | (26)                               | "                         | 1-1/2                  | (146)                  | -              | -           |
| 350 A 1500            | 1.311                              | "                         | 35                     | 146                    | 35 x 35 x 3    | 35 x 35 x 3 |
| (36 A 84)             | (26)                               | "                         | 1-1/2                  | (146)                  | -              | -           |
| 220 ECT PLUS          | 1.311                              | "                         | 35                     | 146                    | 35 x 35 x 3    | 35 x 35 x 3 |
| 220 ECT PLUS          | 1.311                              | "                         | 35                     | 146                    | 35 x 35 x 3    | 35 x 35 x 3 |

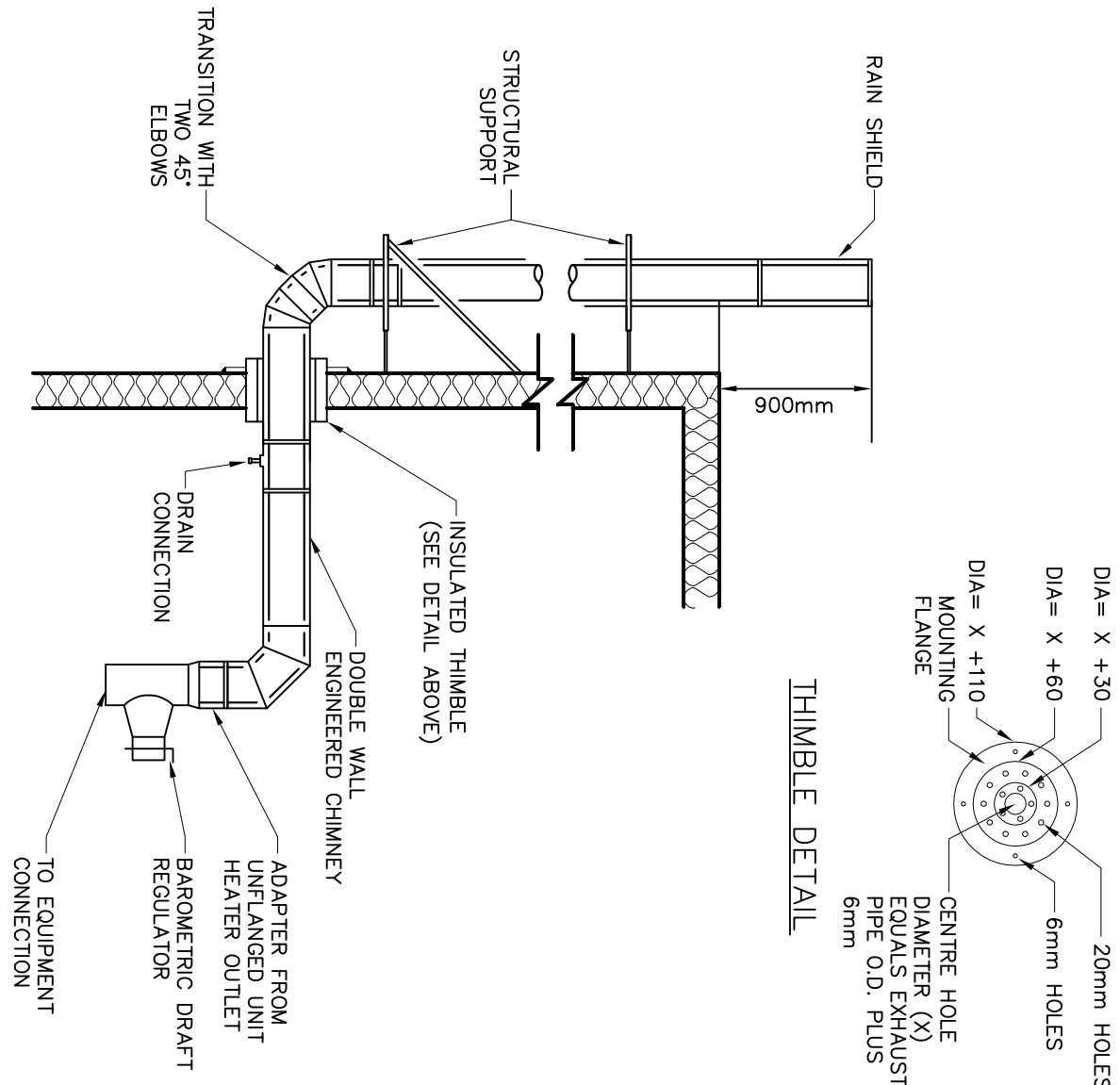
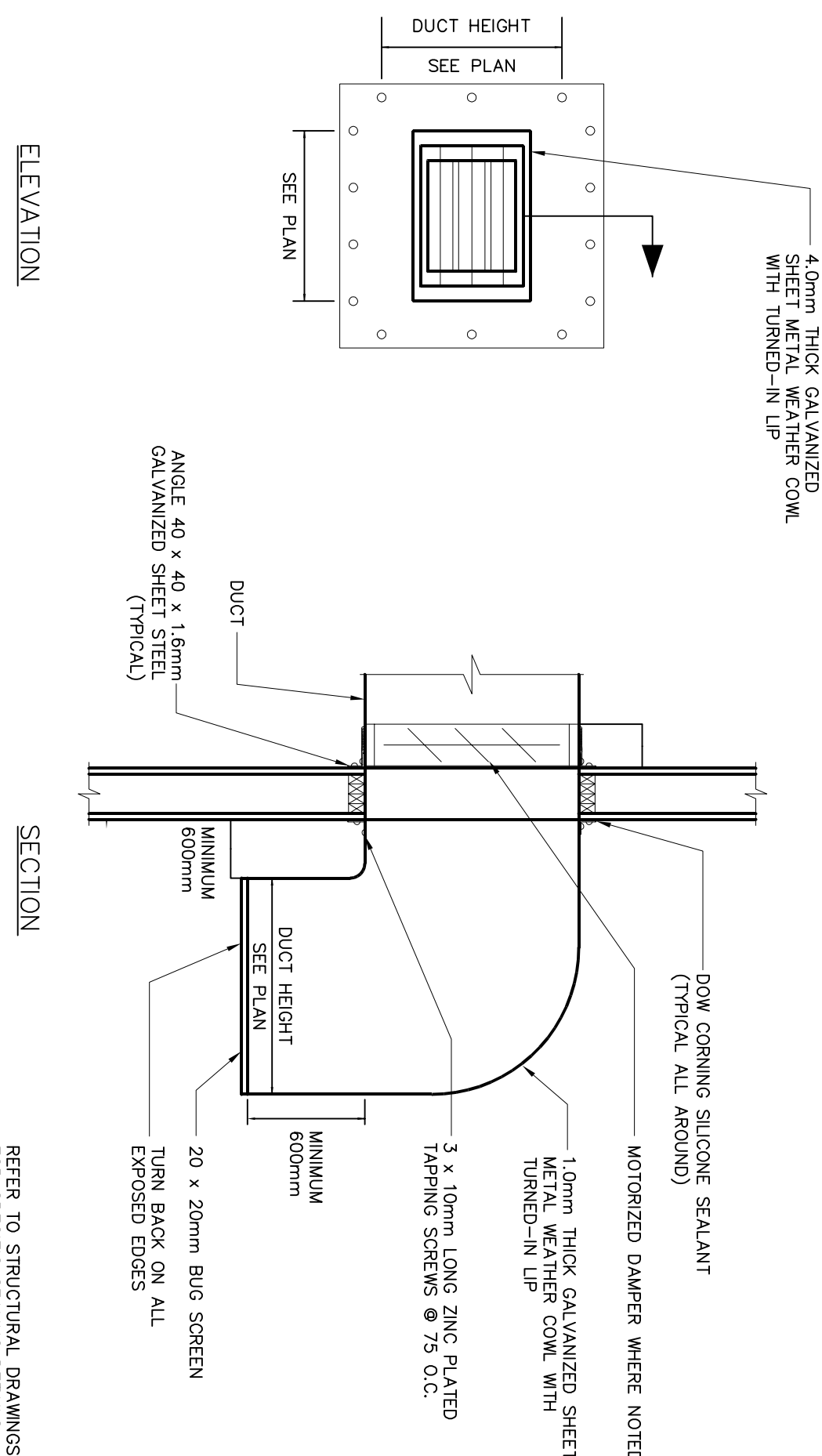
### TYPICAL COMBUSTION AIR INLET DETAIL (NTS)



# SEALED JOINT FOR LOW PRESSURE RECTANGULAR DUCT (NTS)




SUSPENDED EQUIPMENT (TYPE VI)  
(NTS)

UNIT HEATER CHIMNEY DETAIL  
(NTS)

TYPICAL WEATHER COWL DETAIL  
(NTS)



 **Urowo :**  
100-1360 Robertson Road, Suite 100, K2H 5B8  
T. (613) 596.6454 F. (613) 596.3346  
[www.bpa.ca](http://www.bpa.ca)

**Gatineau :**  
430 de l'hospital bid, suite 210, J8Y 1T7  
T. (819) 778.2248 F. (819) 778.5031

**Consulting Engineers**

[illegible]

NOTES: GENERAL CONTRACTOR TO VERIFY ALL DIMENSIONS WITH FINAL ARCHITECTURAL AND MECHANICAL DRAWINGS. NOTIFY THE ENGINEERS OF ANY ERRORS AND/OR OMISSIONS PRIOR TO CONSTRUCTION FOR CORRECTION. DO NOT SCALE THIS DRAWING.