

May 10, 2016

Karén Kharatyan
Acting Manager of Licensing
Nunavut Water Board
P.O. Box 119, Gjoa Haven, NU, X0B 1J0
Phone: (867) 360-6338
Fax: (867) 360-6369
Email: karen.kharatyan@nwb-oen.ca

Re: 3BM-COR1521 Notification of Modification to Water Supply Intake

Dear Mr. Kharatyan,

As per Part E, Item 2 of Water Licence 3BM-COR1521, the Government of Nunavut, Department of Community and Government Services (GN-CGS) on behalf of the Hamlet of Coral Harbour (Licensee) is notifying the Nunavut Water Board (NWB) of a proposed modification to the location of the water supply intake in Coral Harbour.

The rock blasted reservoir in Coral Harbour is filled annually in August/September by a resupply pipeline from Post River, approximately 1.4 km west of the community. The picture below displays the current location of the water intake where water depth is approximately 2 feet (0.61 m).



Figure 1: Current Intake Location (photo taken August 2015)



ᑕᑭᑎᑭᑦ ᑭᑭᑭᑦ ᑭᑭᑭᑦ ᑭᑭᑭᑦ
Building Nunavut Together
Nunavut liuqatigiingniq
Bâtir le Nunavut ensemble

ᑭᑭᑭᑦ ᑭᑭᑭᑦ ᑭᑭᑭᑦ ᑭᑭᑭᑦ
Department of Community and Government Services
Nunalingni Kavamatkunnilu Pivikhaqautikkut
Ministère des Services Communautaires et gouvernementaux

The Licensee is notifying the NWB of a proposed modification to the location of the water supply intake to approximately 245 meters upstream of the current intake. The proposed intake location is significantly deeper with a depth of approximately 10 feet (3.05 m). The image below displays the current and proposed intake locations with respect to the water reservoir. The darker water colour at the proposed intake location is due to the greater water depth.

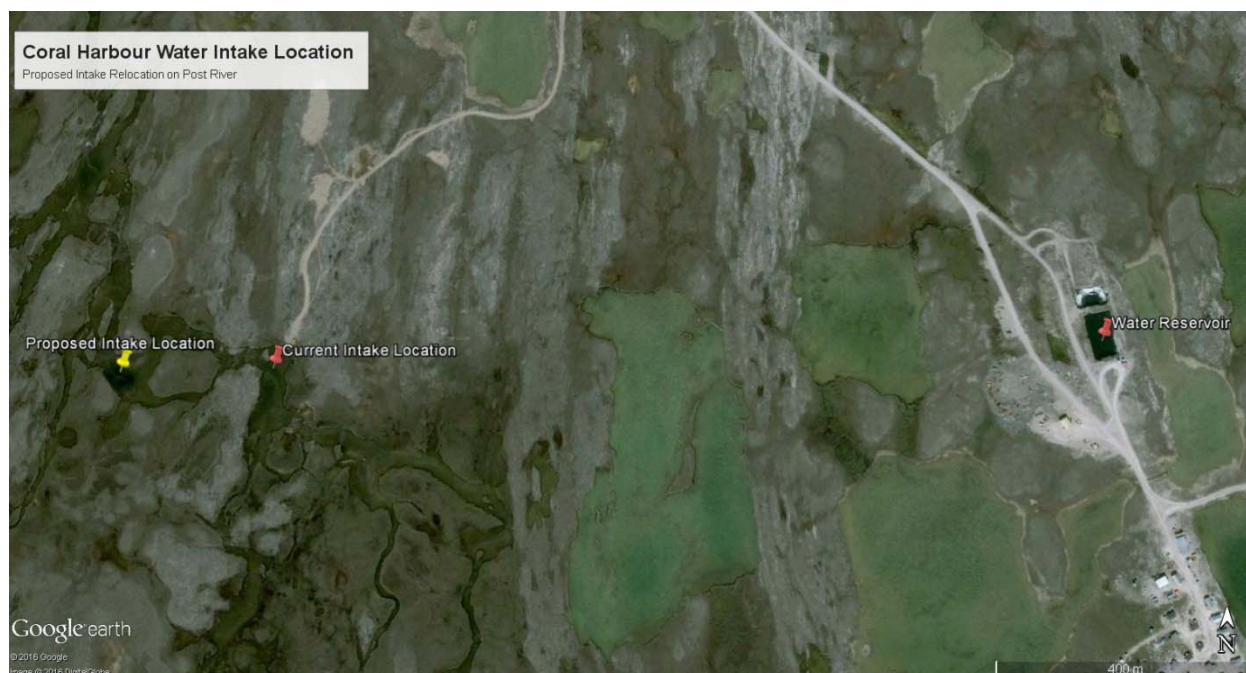


Figure 2: Map of Current and Proposed Intake Locations with respect to Water Reservoir

The GPS coordinates of the current and proposed intake locations are found below.

Table 1: GPS Coordinates of Current and Proposed Intake Locations

Description	Latitude	Longitude
Current Intake Location	64° 8'36.84"N	83°12'1.02"W
Proposed Intake Location	64° 8'36.67"N	83°12'19.05"W
Water Reservoir	64° 8'38.26"N	83°10'22.66"W



ᑭᓄᓂᓄᓂ ᓄᓂᓄᓂ ᓄᓂᓄᓂ
Building Nunavut Together
Nunavutluqatigiingniq
Bâtir le Nunavut ensemble

ᓄᓂᓄᓂ ᓄᓂᓄᓂ ᓄᓂᓄᓂ
Department of Community and Government Services
Nunalingni Kavamatkunnilu Pivikhaqautikkut
Ministère des Services Communautaires et gouvernementaux

Relocating the water supply intake upstream to a deeper location in Post River would extend the timeframe that water can be pumped from the river, reduce the amount of sediment being captured from the bottom of the river, and decrease the likelihood of rocks being sucked into the pump. Moving the intake location will also reduce the likelihood of an emergency situation occurring in an extremely dry scenario when water depths are not sufficient for pumping and the Hamlet cannot refill the reservoir. The proposed intake location is not anticipated to change the hydrological impact of pumping from Post River as the same intake screen, pump and water withdrawal rate will be used.

The modification will have no impact on any Licence conditions; water withdrawal volumes from Post River will remain the same and will not exceed the 45,000 m³/year water use allowance of the Licence. There will be no impact to surface drainage during the modification. No sediment and erosion control measure are required as part of the modification. No earthworks will be done as part of the modification and contaminant free materials will be used for all activities.

Within ninety (90) days of completing the relocation of the water supply intake, the Licensee will submit to the NWB pictures of the new intake location and confirmed GPS coordinates. There will be no engineering drawings of this modification.

For further clarification or additional information on the proposed modification, please contact Megan Lusty at (867) 645-8176 or mlusty@gov.nu.ca.

Sincerely,

Megan Lusty, EIT
Municipal Planning Engineer-In-Training
Community and Government Services
Kivalliq Region, Government of Nunavut
P.O. Box 490, Rankin Inlet, NU, X0C 0G0
Phone: (867) 645-8176
Fax: (867) 645-8141
Email: mlusty@gov.nu.ca

cc: Leonie Pameolik, Senior Administrative Officer, Hamlet of Coral Harbour
Darryl Nakoolak, Foreman, Hamlet of Coral Harbour
Atuat Shouldice, Resource Management Officer, Field Operations Unit, INAC

P.O. Box 490 Government of Nunavut, Rankin Inlet, NU. X0C 0G0
☎ (867) 645-8176 📠 (867) 645-8141