

**OPERATION AND MAINTENACE MANUAL FOR THE EXISTING  
SEWAGE LAGOON**

**OCTOBER 2014**

**HAMLET OF GRISE FIORD  
BAFFIN REGION  
COMMUNITY AND GOVERNMENT SERVICES  
GOVERNMENT OF NUNAVUT**

## TABLE OF CONTENTS

	<u>Page No.</u>
<b>1 INTRODUCTION .....</b>	<b>6</b>
1.1 PURPOSE .....	6
1.2 SITE SETTING .....	6
1.3 POPULATION PROJECTION .....	8
1.4 CONTACT LIST .....	8
<b>2 BACKGROUND .....</b>	<b>9</b>
2.1 GENERAL .....	9
2.1.1 Sewage Treatment Facility .....	9
2.1.2 Sewage Collection and Transport .....	9
2.2 SEWAGE PRODUCTION .....	11
<b>3 SEWAGE DISPOSAL SYSTEM.....</b>	<b>11</b>
3.1 MANUAL ORGANIZATION .....	11
3.2 EQUIPMENT.....	11
3.3 SITE PERSONNEL.....	11
3.4 OPERATIONAL PROCEDURES.....	12
3.4.1 Basic Operations .....	12
3.4.2 Decanting Procedure.....	13
3.4.3 Service Disruption Contingency .....	13
3.4.4 Sampling Procedures and Requirements .....	13
3.4.5 Sludge Monitoring Plan.....	16
3.4.6 Geotechnical Reviews .....	17
3.4.7 Record Keeping and Reporting.....	17
3.4.8 Health and Safety.....	18
3.5 MAINTENANCE PROCEDURES.....	18
3.5.1 Sewage Trucks and Holding Tanks.....	18
3.5.2 Access Road and Truck Pad .....	18
3.5.3 Drainage.....	18
3.6 OPERATION AND MAINTENANCE SUMMARY .....	19
<b>4 SPILL CONTINGENCY PLAN.....</b>	<b>19</b>
4.1 COMMUNITY CONTACT INFORMATION .....	19
4.2 DISTRIBUTION LIST.....	20
4.3 PURPOSE AND SCOPE .....	20
4.4 COMMUNITY ENVIRONMENTAL POLICY.....	20
4.5 PROJECT DESCRIPTION.....	20
4.6 PERSONNEL TRAINING.....	20
4.7 FIRE .....	21
4.8 SPILLS .....	21
4.8.1 Initial Response .....	21
4.8.2 Containment Procedures .....	22
4.8.3 Spot Spills .....	22
4.8.4 Spills in Proximity to a Water body .....	23
4.9 EXISTING PREVENTATIVE MEASURES .....	23
4.10 ADDITIONAL COPIES .....	23
4.11 PROCESS FOR STAFF RESPONSE TO MEDIA AND PUBLIC INQUIRES .....	23

<b>5</b>	<b>RESPONSE ORGANIZATION .....</b>	<b>23</b>
5.1	RESPONSE PERSONNEL .....	23
5.2	FLOWCHART OF RESPONSE ORGANIZATION AND COMMUNICATION LINES.....	23
5.3	SUMMARY OF AVAILABLE COMMUNICATION EQUIPMENT.....	25
<b>6</b>	<b>ACTION PLAN.....</b>	<b>25</b>
6.1	POTENTIAL ENVIRONMENTAL IMPACTS OF SPILL .....	25
6.2	PROCEDURES .....	26
6.2.1	<i>Procedures for Initial Actions.....</i>	26
6.2.2	<i>Spill Reporting Procedures.....</i>	27
6.2.3	<i>Procedures for the Protection of Human Health and Safety .....</i>	27
6.2.4	<i>Procedures for Containing and Controlling Spill.....</i>	27
6.2.5	<i>Procedures for Transferring, Storing and Managing Spill Related Wastes .....</i>	29
6.2.6	<i>Procedures for Restoring Affected Areas.....</i>	29
<b>7</b>	<b>RESOURCE INVENTORY .....</b>	<b>29</b>
7.1	ON-SITE RESOURCES.....	29
7.2	OFF-SITE RESOURCES .....	30
	<b>APPENDIX: .....</b>	<b>31</b>
	<b>REFERENCE: .....</b>	<b>31</b>

## LIST OF FIGURES

Figure 1: Map of Nunavut.....	7
Figure 2: Location of Water Licensed Facilities.....	10
Figure 3: Sampling Location .....	14
Figure 4: Flow Chart of Spill Communication Lines-----	23

## LIST OF TABLES

Table 1: Population Projections for Grise Fiord .....	8
Table 2: Projected Sewage Generation .....	11
Table -3: Effluent Quality Limits for the current Sewage Disposal Facility .....	12
Table 4: Sampling Station Locations .....	14
Table 5: Sampling Analysis for Annual Discharge Monitoring .....	16
Table 6: Summary of Operation and Maintenance Tasks .....	19

Appendix- A                      Guidelines for Water and Wastewater Sampling

Appendix- B                      Spill Reporting Form

## **1 INTRODUCTION**

### **1.1 Purpose**

The purpose of this manual is to establish existing operation and maintenance protocol for the management of the sewage treatment system for Hamlet of Grise Fiord. Information presented in this manual has been developed based on the document “Guidelines for the Preparation of an Operation and Maintenance Manual for Sewage and Solid Waste Disposal Facilities.” This document fulfills Parts B, D, F and H of the Water License 3BM-GRI-0911.

To assist personnel that operate the existing sewage lagoon with proper operation and maintenance procedures, the following requirements are addressed in this O&M manual:

1. Proper operation and maintenance procedures for the sewage treatment system to provide effective treatment and operation of the facility;
2. Monitoring program description;
3. Appropriate methods and procedures for wastewater sampling, and;
4. A spill contingency plan.

### **1.2 Site Setting**

The Hamlet of Grise Fiord is located on the North end of Flaherty Island, a large central island off the Belcher Islands in Hudson Bay. Located at 56° 32' North latitude and 79°14' West longitude with population of 856 in 2014 in the Qikiqtaaluk Region of Nunavut.

Located in the continuous permafrost zone, Grise Fiord has a climate which consists of short cool summers and long cold winters. Annual snowfall and rainfall are approximately 118 cm and 15 cm, respectively. The typical temperature range for January is between a low of about -29°C and a high of about -23°C whereas in July, the temperatures range between a low of 3°C to a high of about 7°C. Usually, freeze up occurs during the month of November but it may happen as early as October or even September. In some years, early freeze up may thaw again before final freeze up occurs. Spring thaw typically takes place during the month of July, but the time frame can vary as much as freeze up. During spring runoff, the community experiences mild flooding.

The community is situated between two valleys of the Kingnait range of hills. Topography consists of areas of moss surrounded by rock outcrops, bedrock and steep cliffs.

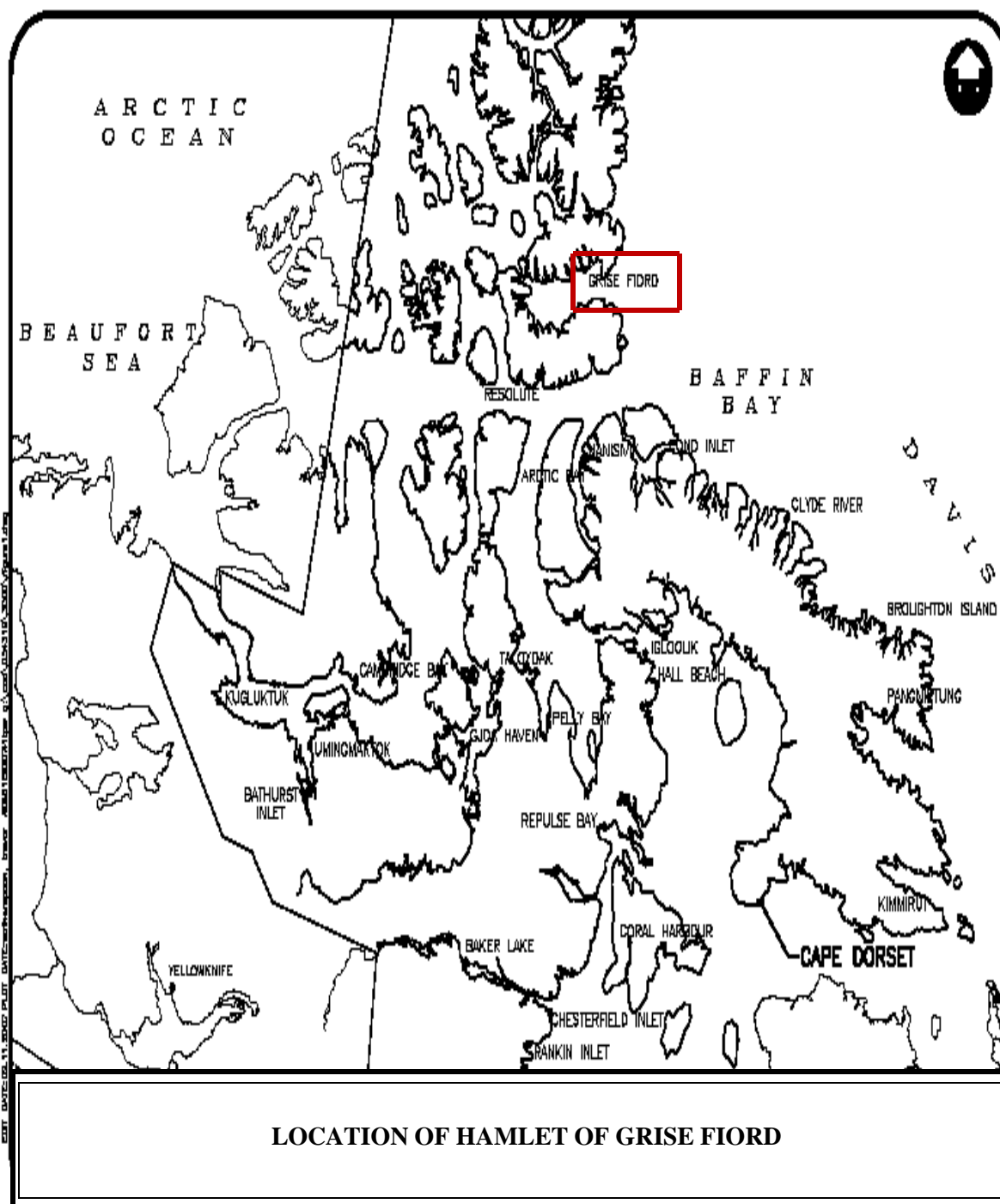


Figure 1: Map of Nunavut

The community uses trucked services for both water delivery and sewage collection. Wastewater is treated using a constructed retention Lagoon cell treatment system that is located approximately 800 m southwest from the center of the community.

### **1.3 Population Projection**

Presently, the population of Grise Fiord is approximately 360 in 2014 people (Based on 2009 GN estimates). **Table 1** shows the population growth for the Hamlet over the lifetime of the new plan projected by Nunavut Bureau of Statistics.

**Table 1: Population Projections for Grise Fiord**

Year	2009	2014	2019	2024	2029	2034
Population	150	160	175	189	198	203

**Source:** Nunavut Bureau of Statistics.

### **1.4 Contact List**

The Hamlet of Grise Fiord has a Maintenance Management Operation System (MMOS) already in place. Regular maintenance will be conducted as outlined in this manual whereas specific work orders for sewage treatment facility and system will be passed through to the MMOS. A list of the individuals that are responsible for the operation and maintenance of the sewage treatment and waste disposal system are as follows:

Senior Administrative Officer	(867) - 980-9959
Municipal Works Foreman	(867) - 266-9920



## **2 BACKGROUND**

### **2.1 General**

#### **2.1.1 Sewage Treatment Facility**

Wastewater in Grise Fiord is being treated by a single cell sewage lagoon system. The capacity of the lagoon is roughly ---- and located within a 0. 80 km range from the community. This lagoon treatment process is aeration in nature. This is a retention lagoon in containment nature as well. A one meter free board is being maintained all the time in order to protect structural integrity. Ten days advance notice is provided to the AANDC inspector prior to start decanting.

The Lagoon structure looks very sound. This facility is effectively treating wastewater produced by the community daily.

#### **2.1.2 Sewage Collection and Transport**

All municipal wastewater of the community is collected and transported to the sewage lagoon by vacuum trucks. The sewage collection service operates 5 days a week. With one truck operating, about 8 to 10 trips are made to the sewage lagoon per day.

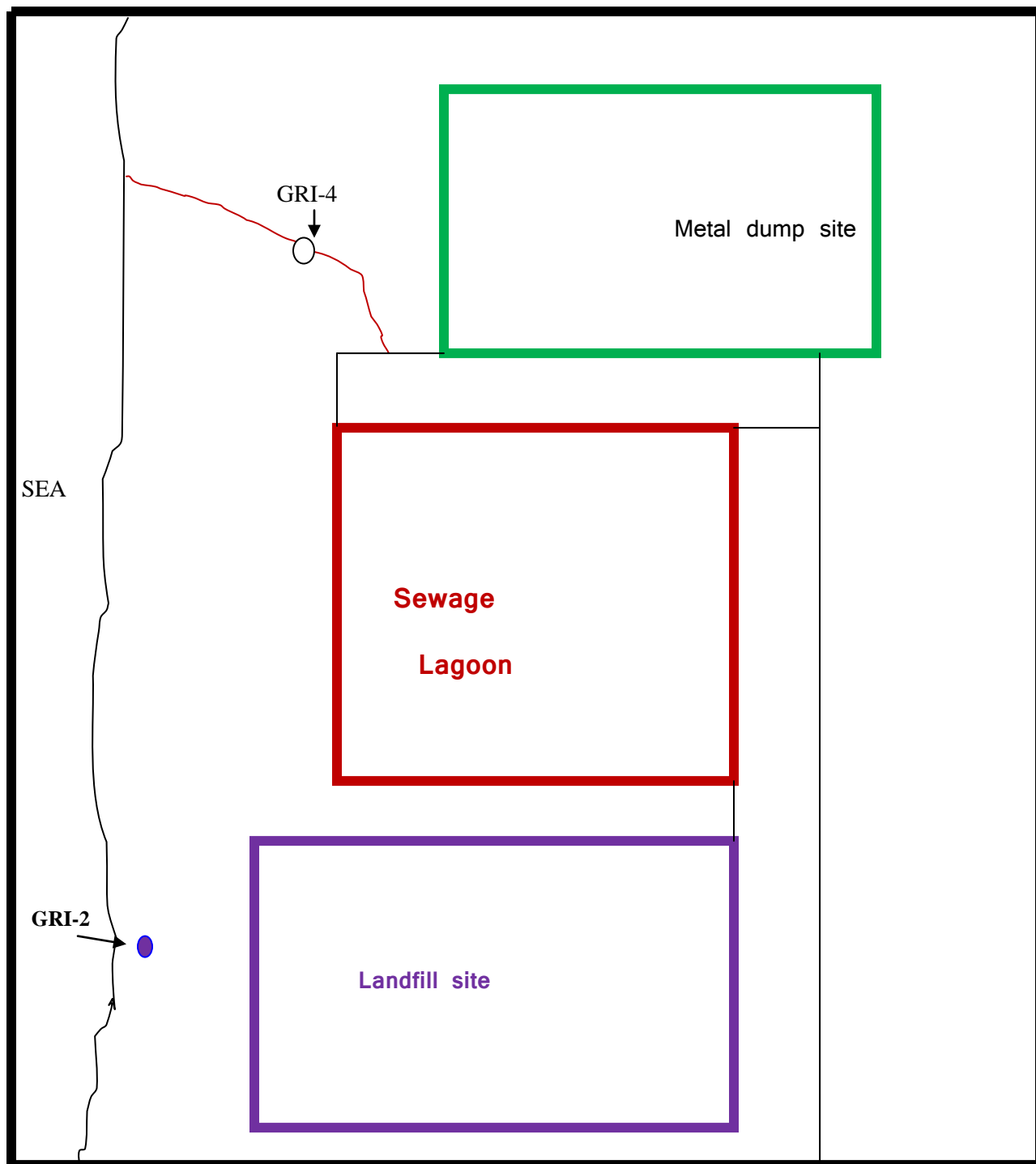


Figure 2: Location of Water Licensed Facilities

## 2.2 Sewage Production

It is approximated, for smaller communities such as Grise Fiord where water distribution is provided by trucks, that the sewage generation is equal to the water consumption. Therefore, the daily and annual sewage generation rates are approximately equivalent to the water consumption rates. The following equation, proposed by MACA, gives the water consumption rate for small communities on trucked services that have a population less than 2,000 people.

$$\text{Water Use (L/capita/day)} = 90 \text{ L/capita/day} \times (1.0 + 0.00023 \times \text{Population})$$

Using the estimated population projections shown in **Table 1**, the projected sewage generation rates over the facility lifetime are shown in **Table 2** below.

**Table 2: Projected Sewage Generation**

Year	Population	Sewage Generation Rate (L/capita/day)	Annual Generation (m <sup>3</sup> /yr.)
2009	150		
2014	160		
2019	175		
2024	189		
2029	198		
2034	203		

Physical, chemical and biological characteristics of sewage are referred to as its composition. It is assumed that raw wastewater has a typical average concentration of 625 mg/L for BOD<sub>5</sub> and 900 mg/L for TSS. For domestic waste, average raw FC concentration is about  $2 \times 10^9$  FCU per 100 mL.

## 3 SEWAGE DISPOSAL SYSTEM

### 3.1 Manual Organization

This section of the manual presents the operation and maintenance procedures that are associated with the wastewater treatment facility that designated operators assigned to the system should be aware of concerning the facility and system.

### 3.2 Equipment

The equipment required to operate the Grise Fiord sewage treatment system consists of one sewage collection truck only.

### 3.3 Site Personnel

The overall responsibility of the waste disposal site as well as the overseeing of the operation and maintenance personnel is that of the Senior Administrative Officer. Day-to-day operation and

maintenance of the facility is the responsibility of the Municipal Works Foreman. In addition, several other employees operate and maintain the sewage truck on a day-to-day basis.

### **3.4 Operational Procedures**

These procedures must be carried out frequently to ensure efficient operation of the treatment system. Daily operation procedures /should be carried out frequently to ensure smooth operation of the treatment system.

#### **3.4.1 Basic Operations**

1. Municipal wastewater is collected from holding tanks at each residence and commercial building by sewage (vacuum) trucks.
2. Sewage (vacuum) trucks pump the wastewater out of the holding tanks and transport it to the sewage treatment area.
3. Throughout the year, the wastewater is discharged into the lagoon through the offload chute located at the truck pad. The sewage truck backs up to the lagoon (bollards are placed for safety purposes) and the valve is opened. Wastewater is discharged into the lagoon, over the splash pad.
4. The wastewater cannot remain in the lagoons for 12 months because these are under capacity and flow arrangement is made to prevent structural failure. The retention period is minimum to satisfy the effluent quality to the water licence requirement.
5. Decanting occurs for roughly three weeks sometime in August each year.

At least 10 days' notice to the AANDC prior to decanting is not followed in this case.

The effluent discharged from either the existing Sewage Disposal Facility at sampling station **GRI-2** should meet the following effluent quality standards prior to decant as listed in **Table 3**. One meter free board is maintained all the time for structural integrity of the dykes.

**Table -3: Effluent Quality Limits for the current Sewage Disposal Facility**

Parameter	Units	Maximum Average Concentration
Fecal Coliforms, FC	CFU/100 mL	1 x 10 <sup>6</sup>
5 Day Biological Oxygen Demand, BOD <sub>5</sub>	mg/L	120
Total Suspended Solids, TSS	mg/L	180
Oil and Grease	-	No visible sheen
pH		6 - 9

### **3.4.2 Decanting Procedure**

The overflow is always controlled. The steps involved with mechanical decanting the lagoon cell are as follows:

- 10 (ten) days notice is given to the AANDC inspector prior to start decanting.
- Monitor flow rate is not possible to record for leaving discharge from the Lagoon.
- Monitor for erosion of the dyke at the end of the discharge and repair as required.
- Check daily for erosion, blockages and other problems that may occur on the upstream slope of the berm. Apply necessary procedures to fix problem during decanting.
- Monitor effluent samples at the beginning, at the middle and at the end of decanting process.

### **3.4.3 Service Disruption Contingency**

In the event of any disruption in the service of the lagoon, for instance, the road to the lagoon is inaccessible; the Hamlet does not have any emergency sewage disposal site.

The Hamlet will notify AANDC when the emergency situation arises. In case of spill, spill hotline is notified.

The Senior Administrative Officer of the Hamlet of Grise Fiord will be the responsible party for the actions taken under this emergency procedure.

### **3.4.4 Sampling Procedures and Requirements**

A key component to the operations and maintenance of the sewage treatment system is a sampling program.

The proposed sampling program will help to monitor the treatment while verifying compliance with regulations. As well, it will model the treatment process which with help to understand the behavior of the lagoon for future development and expansions of the system.

It is important such a sampling program be implemented by the Hamlet as a part of the annual operations for the facility. Local members of the community that operate the system are to be trained on the proper operation and procedure methods used in the sampling program. In addition, quality and safety training will also be included which will ensure that the high quality data will be obtained.

All sampling, sample preservation and analyses will be in accordance with methods described in the current edition of *Standard Methods for the Examination of Water and Wastewater*. In addition, a document has been attached in **Appendix A** of this manual that provides guidelines and procedures to follow when sampling wastewater.

To obtain meaningful results from the analysis, the following five factors are of particular importance:

- Sample collection at designated time and location;

- Correct usage of container/sample bottle for parameter being tested;
- Correct labeling of sample bottles and filling out record/field sheet;
- Correct procedure for field sampling;
- Proper and timely shipment of samples to the laboratory.

It is critical, from a quality perspective, that sample collection be performed from an area of higher concentration to an area of lower concentration of contaminants. Therefore, a sample will be collected at various locations along the system to monitor the effluent quality at various stages of treatment. Descriptions of each sampling location of the sewage treatment system for the Monitoring Program are listed in **Table 4** below in page 10 and shown in **Figure 4** on page 11.

**Table 4: Sampling Station Locations**

Monitoring Program Station Number	Description of Monitoring Program Station
GRIS-3	Influent of Wastewater to Wastewater Facilities at the point of discharge into the wetland



**Figure 3: Sampling Location**

By obtaining samples at the location proposed above, effluent treatment rates can be monitored. According to the water license, wastewater samples will be taken from location GRI-4 three times in summer. These wastewater samples will undergo the same analysis which will include the following set of parameters as listed on the following page.

Biochemical Oxygen Demand, BOD <sub>5</sub>	Carbonaceous Biochemical Oxygen Demand, CBOD <sub>5</sub>
Total Suspended Solids, TSS	Fecal Coliforms, FC
pH	Conductivity
Oil and Grease (Visual)	Total Organic Carbon, TOC
Total Hardness	Total Alkalinity
Nitrate-Nitrite	Ammonia Nitrogen, NH <sub>3</sub> -N
Total Phosphorus, TP	Total Phenols
Magnesium, Mg	Calcium, Ca
Potassium, K	Sodium, Na
Chloride, Cl	Sulphate, SO <sub>4</sub>
Total Arsenic, As	Total Aluminum, Al
Total Antimony, Sb	Total Barium, Ba
Total Beryllium, Be	Total Cadmium, Cd
Total Chromium, Cr	Total Cobalt, Co
Total Copper, Cu	Total Iron, Fe
Total Lead, Pb	Total Lithium, Li
Total Manganese, Mn	Total Mercury, Hg
Total Molybdenum, Mo	Total Nickel, Ni
Total Selenium, Se	Total Tin, Sn
Total Strontium, Sr	Total Thallium, Tl
Total Titanium, Ti	Total Uranium, U
Total Vanadium, V	Total Zinc, Zn

**Table 5: Sampling Analysis for Annual Discharge Monitoring**

Test Parameter	Receiving Water Body	
Biological Oxygen Demand, BOD <sub>5</sub>	X	X
Total Suspended Solids, TSS	X	X
Fecal Coliforms, FC	X	X
Ammonia-Nitrogen, NH <sub>3</sub> – N	X	X
Total Phosphorus, TP	X	X
Heavy Metals	X	X

Samples from the truck will provide quality of the raw sewage before it enters the lagoon. This data will assist with monitoring the water quality of these areas by comparing the results of both raw and treated wastewater samples. These samples will be taken four times in summer months. No flow meter exists in the sewage truck to record discharge volume.

The samples will be shipped to the laboratory and analyzed using the same test method/procedure. This sampling program will be conducted over several years to collect sufficient data for trend analysis. All lab results for the monitoring program will be submitted to NWB along with the Hamlet annual report. Note that any other additional sampling during the year will be at the request of the regulatory agencies.

Hamlet is using the services of the Caduceon Lab, Accredited Environmental lab, in Ottawa, Ontario.

### **3.4.5 Sludge Monitoring Plan**

The sludge blanket will be monitored as part of the annual discharge procedure. Approximately 10 year's interval, a study may be undertaken to determine the need and frequency for sludge removal and disposal over the lifetime of the lagoon. It is recommended for storage the sludge blanket at the bed of the lagoon for the life time of operation of the lagoon. If the lab test results from the lagoon discharge quality, specifically BOD and TSS analyses, become non-compliance, then sludge removal study can be conducted earlier.

Sludge in sewage lagoon should be sampled more often if required. The purpose of the sampling is to ensure that the sludge remains of a quality suitable for land disposal. Sampling shall consist of a sample collected from the center point of a grid no less than 10 m by 10 m. Sufficient samples shall be taken to describe the entire sewage lagoon. Results from the sludge analysis are to be reported upon completion of the test and in the annual report.



### **3.4.6 Geotechnical Reviews**

A Dam Safety review is to be completed by a qualified Engineer , considering Municipal Engineer and will be executed annually in each summer following GN-CGS report card.

The review is to include a site inspection report of the existing lagoons under operation based on the following items:

- Site inspection of all berms and structures of the lagoon.
- Safety review to include the operation of all discharge and back up equipment and procedures,
- Maintenance review to verify that all facilities required for safety of the dam and monitoring systems are maintained in satisfactory condition.
- Review of the surveillance and monitoring program and methods to verify that the monitoring program will detect any unsafe conditions in a timely manner.
- Review the level of emergency preparedness to verify that it is appropriate for the facility.
- Review previous report to verify that recommendations have been complied with.

The report generated from the geotechnical review will be submitted as a part of the annual report to the Nunavut Water Board.

### **3.4.7 Record Keeping and Reporting**

Records of all activities and operation should be kept to assist in the planning of annual operations and maintenance as well as the evaluation of the effectiveness of the sewage treatment facility. These records should be kept in the Hamlet Office and be maintained by the facility's supervisor. Sample O&M log sheets for the Grise Fiord Sewage Treatment System are available in the Hamlet office.

Sampling, Record keeping and reporting requirements are listed in the water license which is attached in **Appendix A** of this document. Based on the record keeping and reporting requirements listed in Part B of the water license, the following information and data should be recorded and be included in the annual report that is submitted to the Board:

- Monthly and annual quantities in cubic meters (m<sup>3</sup>) of raw sewage offloaded from sewage trucks for the existing Sewage Disposal Facility .
- Number of days of use for the existing Sewage Disposal Facility.
- Number of trips to the Sewage Disposal Facilities;
- Start and end date for discharge of lagoon;
- Date and description of maintenance activities carried out on the Sewage Disposal Facility and
- Date, volume and description of any spills that have occurred.

### **3.4.8 Health and Safety**

Due to the potential health hazards associated with municipal wastewater, it is imperative, for those personnel working in this area, to be familiar with and execute all safety precautions involved with the various work tasks associated with the system.

- Equipment is to be kept clean.
- Wear protective clothing such as gloves and boots at all times.
- Work cloths should not be worn home.
- Hands to be washed frequently; as a minimum before eating and after work.
- Personnel should receive appropriate vaccinations and ensure they are kept up-to-date.

## **3.5 Maintenance Procedures**

In the proceeding sections, maintenance procedures for the different areas of the wastewater treatment infrastructure are discussed and should be carried out to ensure the system runs efficiently.

### **3.5.1 Sewage Trucks and Holding Tanks**

The most important part of the sewage treatment system and process is the collection and transport of the wastewater from the residences and buildings to the lagoon cell. Therefore, it is crucial that the sewage truck be kept in good repair. Procedures for truck and tank maintenance are as follows:

- Repairs should be completed immediate and take high priority;
- Full tank sewage trucks should not rest for long periods of time, especially during the winter;
- Holding tanks should be kept in good working order and prevented from freezing in the winter.

### **3.5.2 Access Road and Truck Pad**

Basic road maintenance such as those listed below must be performed on a regular basis to ensure that the site is accessible at all times.

- Road and truck pad be graded smooth and reshaped at least twice (2) per year;
- Snow, when necessary during the winter, to be removed to provide unrestricted access to discharge point;
- During snow removal, care is to be taken not to damage berms and surrounding areas;
- Any spilled and/or frozen wastewater should be removed with the snow to appropriate disposal site;
- Discharged point should be monitored for potential erosion problems.

### **3.5.3 Drainage**

The truck pad at the sewage discharge point should be graded such that any wastewater spilled during the offloading procedure will flow into the lagoon cell and sewage treatment system. During the winter

months, it is important to monitor the discharge pipe as this may be problems with flow during periods of extreme low temperatures. Wastewater remaining in the pipe may freeze, causing blockage and/or buildup which can potentially damage or break the structures.

### **3.6 Operation and Maintenance Summary**

Daily, weekly, monthly and yearly activities and procedures that are required by the operator and maintenance personnel are summarized in **Table 6** shown as follows.

**Table 6: Summary of Operation and Maintenance Tasks**

<b>Frequency</b>	<b>Description of Task</b>
Daily	<ul style="list-style-type: none"><li>▪ Collection, transportation and disposal of wastewater and/or sewage from residential and commercial holding tanks to the truck discharge point at the sewage treatment lagoon.</li><li>▪ Immediate cleaning of any spills.</li><li>▪ Clearing of snow from access road and truck turn-around pad as required during winter.</li><li>▪ Maintaining O&amp;M information records</li></ul>
Weekly	<ul style="list-style-type: none"><li>▪ Inspection of berms, dykes and drainage courses.</li><li>▪ Monitoring of area surrounding thermistor.</li><li>▪ Conduct weekly monitoring program (if required).</li><li>▪ Maintaining O&amp;M information records</li></ul>
Monthly	<ul style="list-style-type: none"><li>▪ Maintenance of access road and truck pad if required.</li><li>▪ Monitoring and recording of thermistor readings for monitoring program.</li><li>▪ Confirm location and readability of signs.</li><li>▪ Conduct monthly monitoring program (if required).</li><li>▪ Maintaining O&amp;M information</li></ul>
Yearly	<ul style="list-style-type: none"><li>▪ Perform annual decanting of lagoon cell in fall.</li><li>▪ Conduct geotechnical review of geothermal monitoring program.</li><li>▪ Grading and reshaping of access road and truck pad.</li><li>▪ Conduct annual monitoring program (if required).</li><li>▪ Maintaining O&amp;M information records</li></ul>

## **4 SPILL CONTINGENCY PLAN**

### **4.1 Community Contact Information**

Raymond  
Senior Administrative Officer  
Hamlet of Grise Fiord  
Grise Fiord, Box - X0A , NU  
Tel: (867) 980 9959

## **4.2 Distribution List**

This plan and most recent revisions will be distributed to:

Timoon Toonoo	Regional Director, GN-CGS
Bhabesh Roy	Municipal Planning Engineer, GN- CGS
Raymond --	Senior Administrative Officer
Phyllis Beaulieu	Manager of Licensing, Nunavut Water Board

## **4.3 Purpose and Scope**

The purpose of this plan is to outline response actions for potential spills of any size, including a worst case scenario for the Hamlet of Grise Fiord. The plan identifies key response personnel and their roles and responsibilities in the event of a spill, as well as the equipment and other resources available to clean up a spill. It details spill response procedures that will minimize potential health and safety hazards, environmental damage and clean-up efforts. The plan has been prepared to ensure quick access to all the information required in responding to a spill.

## **4.4 Community Environmental Policy**

The Hamlet of Grise Fiord has no formal environmental policy; however, Grise Fiord is committed to operating in an environmentally sensitive manner, and complying with requirements of the Nunavut Water Board.

## **4.5 Project Description**

This spill contingency plan will be used by the Hamlet, for activities associated with Hamlet operations. These include:

- Operation of the existing the single sewage cell disposal site

## **4.6 Personnel training**

Hamlet personnel that are responsible for the sewage treatment and disposal facility should be trained in Workplace Hazardous Materials Information System (WHMIS), Transportation of Dangerous Goods Act and Regulation (TDGA and TDGR) as well as First Aid. In addition, personnel should ensure that proper vaccinations of employees are kept current and that they are familiar with the response plan. It is good practice to obtain copies of a list of procedures and equipment that are to be used for such emergencies in all sewage trucks and the common work area.

In all response cases, personnel should place their own safety as the highest priority. The procedures that should be taken in the likelihood of a potential fire or spill are described in the following sections.

## **4.7 Fire**

A contingency plan should be developed by the Hamlet Fire Department to describe the response and action protocols to be implemented in the case of a fire. Special precautions should be used in the case of waste burning as it can produce harmful, poisonous gases. If an uncontrolled fire occurs, the following procedure should be implemented:

- Immediately evacuate area and go to community's designated meeting place.
- Keep all personnel up-wind from the source.
- Notify the Hamlet Fire Department at (867) 980-4422

## **4.8 Spills**

A spill contingency plan has been developed by the Hamlet that identifies the procedures to follow when a spill of any hazardous material has occurred. Similar procedures can be used for the case of sewage spills.

Below, in the subsequent sections, the measures that are to be implemented if a spill or uncontrolled release of a substance occurs during the collection and transportation of wastewater are described for the following areas:

- Initial Response
- Containment Procedures
- Spot Spills
- Spills in Proximity to a Water body

### **4.8.1 Initial Response**

If a spill occurs, the first person at the scene will:

1. Perform an initial assessment to identify immediate danger.
2. Identify the material spilled and verify the nature of the hazard by corresponding to the Material Safety Data Sheets (MSDS) so to apply appropriate safety procedures.
3. If possible and safe to do so, cut off and/or stop the source of the spill.
4. Control danger to the human life without further assistance, if possible. If, for instance, the spill creates a fire, explosion or other hazard, remove all potential ignition sources.
5. Obtain immediately assistance from others and start to contain and/or clean up the spill.
6. Contact the Municipal Works Foreman to notify them of the spill as they will contact relevant regulators and community residents of the occurrence.
7. Mark off the spill site as to warn the public of the incident and to prevent access.

Once the Municipal Works Foreman has been contacted and have arrived on site, he/she will immediately ensure that:

1. Necessary arrangements for first aid and removal of injured personnel have been made. Where possible, necessary action will be taken to secure the site to protect human safety.
2. If not already done and is safe to do so, take the appropriate action to stop the flow or release of material/substance as well as to contain or prevent the spread of the spilled material if at all possible.
3. Contact the 24 Hour Spill Line at (867) 920-8130 to report spill and obtain additional assistance.
4. Contact the Hamlet's Senior Administrative Officer.
5. If required, notify the Fire Department at (867) 980-4422 and RCMP Detachment at (867) 980-1111.

#### **4.8.2 Containment Procedures**

Response personnel will immediately start to contain the spill to ensure that the spill does not spread and contaminant other areas and/or environment. The following actions might also be taken if relevant to the spill situation:

1. If the source of the spill is coming from a leaking fuel truck, then pump fuel into a suitable container or another tank until the tank is dry.
2. Culverts that have been potentially affected by the spill should be blocked off to minimize travel of the substance.
3. Dig a basin or construct a berm to stop and contain the pathway and flow of the spill.
4. Apply absorbent materials to contain and recover small volumes of spilled substance.
5. Spilled substance and/or material are to be collected and transported to an approved waste disposal facility in the appropriate manner.

#### **4.8.3 Spot Spills**

Spot spills are those that involve a small volume of substance in a controlled material over a small, contained surface area. For spot spills involving hazardous materials, the following steps may be taken by personnel:

- Immediately take action to clean up spill by implementing proper or suitable handling and containment procedures for the material spilled.
- Report spill to the Municipal Works Foreman and Hamlet's Senior Administrative Officer.
- Determine suitable methods for removal of contaminated soils and restoring site of the spill. Consult environmental and government agencies for assistance.
- Flag and record locations and information of spot spills for future reference and monitoring.
- In the case of a spot sewage spill, place lime over the sewage, collect and transport the material to the solid waste facility for proper disposal.

#### **4.8.4 Spills in Proximity to a Water body**

If a spill occurs in close proximity to a water body, take necessary actions to prevent the spill entering the nearby water body. Similar containment procedures discussed above in Section 4.9.2 can be used to assist with the likelihood of spills located near water bodies.

#### **4.9 Existing Preventative Measures**

The community is concerned about the environment and the possibility of a spill occurring and takes precautions when working with hazardous materials; however, no formal preventative measures are in place.

#### **4.10 Additional Copies**

Several copies of this plan will be kept in the community, in the Hamlet Office.

#### **4.11 Process for Staff Response to Media and Public Inquires**

All media enquiries are directed to the SAO, **Raymond** -----

### **5 RESPONSE ORGANIZATION**

#### **5.1 Response Personnel**

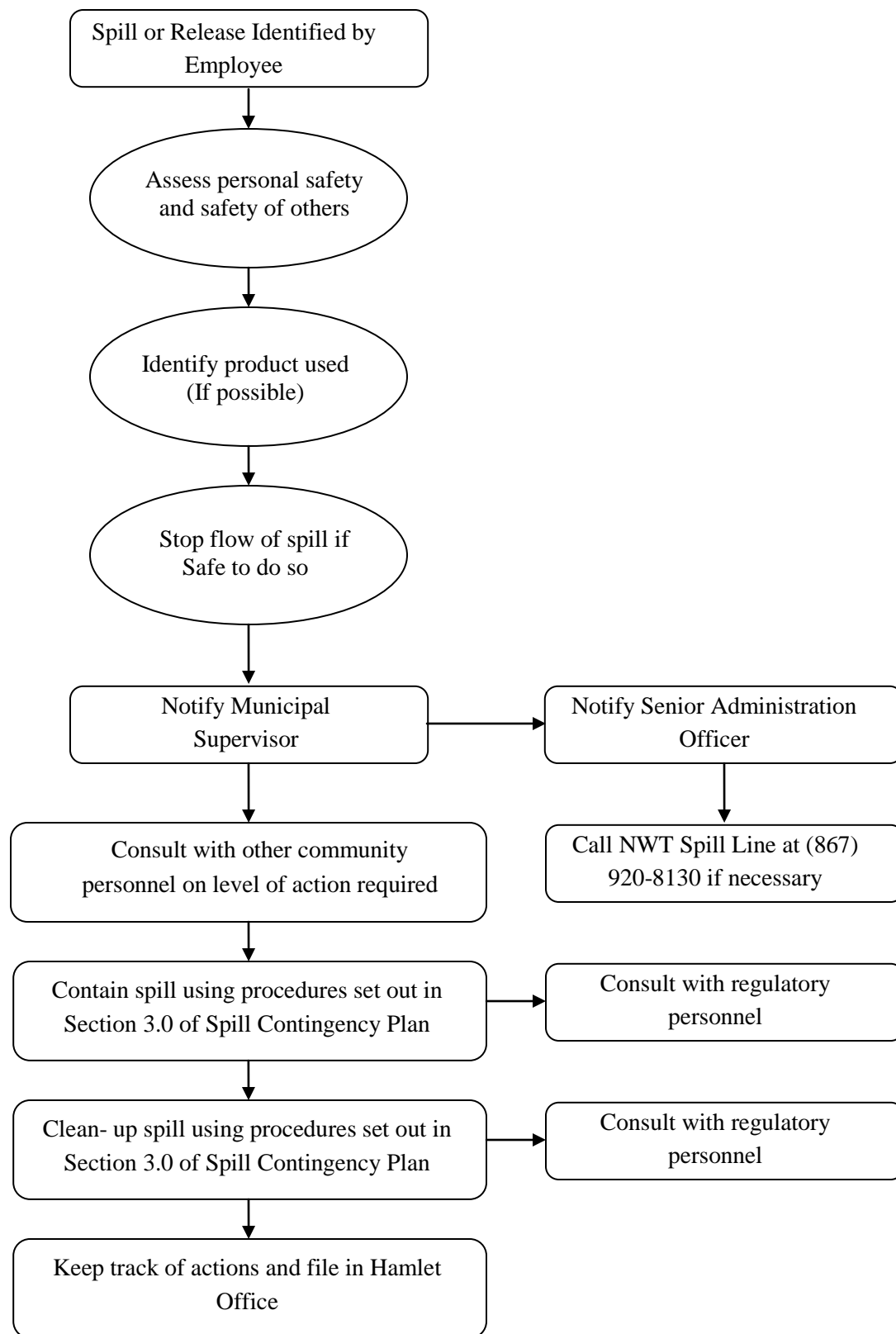
The following table lists the personnel who will be involved in the spill response. Contact information is also provided.

**Table 10. Response Personnel Contact Information**

<b>Name</b>	<b>Contact Information</b>
Raymond (SAO)	867-980-9959
Works Foreman at Fire Department	867-980-9920

#### **5.2 Flowchart of Response Organization and Communication Lines**

The following flowchart outlines the chain of communication to be followed, upon discovery of a spill or release by an employee of the community.



**Figure 4: Flowchart of Spill Communication Lines**



### **5.3 Summary of Available Communication Equipment**

The following equipment is available in the community for communication purposes:

- Telephone with land line
- Computers with internet connection in Hamlet Office
- Fax machine

## **6 ACTION PLAN**

### **6.1 Potential Environmental Impacts of Spill**

Generally, for the hazardous materials discussed below, environmental impacts are lower during the winter, as snow is a natural sorbent and ice forms a barrier lining for eliminating soil or water contamination. Spills can be more readily recovered when identified and reported.

#### ***Gasoline:***

Environmental Impacts:

- Harmful to wildlife and aquatic life
- Not readily biodegradable
- Has potential to bio accumulate in environment
- Volatilizes easily
- Runoff into water bodies must be avoided

Worst Case Scenario: All fuel drums open simultaneously and contents pour onto ground and surrounding environment.

#### ***Diesel:***

Environmental Impacts:

- Harmful to wildlife and aquatic life
- Not readily biodegradable
- Has potential to bio accumulate in environment
- Burns slowly (more readily contained than volatile fuels)
- Runoff into water bodies must be avoided

Worst Case Scenario: All fuel drums open simultaneously and contents pour onto ground and surrounding environment.

***Waste Oil and Miscellaneous Oils and Grease:***

Environmental Impacts:

- Harmful to wildlife and aquatic life
- Not readily biodegradable
- Has potential to bio accumulate in environment
- Runoff into water bodies must be avoided

Worst Case Scenario: All storage drums open simultaneously and contents pour onto ground and surrounding environment.

***Sewage:***

Environmental Impacts:

- Human health hazard, and unsightly appearance
- High nutrient concentrations could negatively impact water bodies and runoff into water bodies must be avoided

Worst Case Scenario: Full sewage truck releases all of its contents onto ground and surrounding environment.

## **6.2 Procedures**

### ***6.2.1 Procedures for Initial Actions***

The following list of actions should be followed by the first person on the scene:

- Ensure safety of all personnel
- Identify the product spilled
- Assess the hazards and risks to persons in the vicinity of the spill
- If possible, without further assistance, control the danger to human life
- If it is safe to do so, and if possible, stop the spill (i.e. shut off pump, replace cap, tip drum upward, etc.)
- Gather information on the status of the situation, including:
  - Estimated size of spill
  - Estimated migration route
- Contact Municipal Supervisor, as per flowchart in Figure 3.

### *6.2.2 Spill Reporting Procedures*

Spills should be reported immediately to the Municipal Supervisor, who will notify the SAO. Together they will determine if the spill is to be reported to the NWT 24-Hour Spill Line at 867-920-8130.

Copies of the Spill Report form are available in each spill kit and at the back of this manual. The form will be filled out by the Public Works Foreman (or designate), and faxed or emailed to the NWT Spill Line. Contact information is as follows:

Territorial 24-Hour Spill Line

Phone: (867) 920-8130

Fax: (867) 873-6924

Email: spills@gov.nt.ca

### *6.2.3 Procedures for the Protection of Human Health and Safety*

Following a spill, the health and safety of workers as well as the general public is a priority. Actions taken will depend on the type of spill.

- ***In the event of a chemical spill:*** Restrict public access to the spill area. Workers involved in the clean-up of the spill should wear personal protective equipment (PPE).
- ***In the event of a flammable or combustible material spill:*** Evacuate adjacent buildings and restrict public access to the spill area. Remove sources of ignition if safe to do so (no smoking, flares, sparks or flames in the area). Never walk through or touch the spilled material. De-energize electrical equipment from a remote location if safe to do so. If ignition sources cannot be removed safely, evacuate the area immediately and report the spill situation. All equipment used when handling the material must be grounded. Only spark-arresting equipment should be used during clean-up of the spill. PPE should also be worn by workers involved in the clean-up. Refer to the product Material Safety Data Sheet (MSDS) for further instruction.
- ***In the event of a sewage spill:*** Restrict public access (including pets and animals) to the spill area.

### *6.2.4 Procedures for Containing and Controlling Spill*

General procedures noted below will be used to contain and control all spills. Specific procedures for spills on land, water, snow and ice follow.

- First anticipate what will be affected by the spill.
- Assess direction and speed of spill, and any factors that could affect these.
- Determine best location for containing spill.

### ***Spills on Land:***

Dykes and trenches can be constructed to contain spills on land. Soil surrounding the spill area can be dug out, and piled up, to create a barrier for the spill. A plastic tarp can be placed at the base of the dyke, so that the pooled material can be removed with sorbent materials. Conversely, trenches can be excavated to permafrost, which will provide a natural containment of the spill. Once the material is contained, it can be pumped out, or removed by using sorbent materials. If the spill is moving very slowly, such structures may not be necessary and the material can be removed before migrating away from the spill location.

### ***Spills on Water:***

Spills on water are considered the most serious types of spills, as there is often no containment of the spilled material and water quality and aquatic life are negatively impacted. Booms and weirs can be installed to contain the spill. Booms are designed to float, and are made of absorbent material to soak up the spilled fuel. They are deployed from the shore or a boat, to create a circle around the spill. Weirs are installed across a stream, to prevent further migration. Plywood or other materials found onsite can be used. Barriers made of fence or netting can be used as well, with sorbent material placed at the base of the barrier. Once contained, the fuel can be removed by absorbent materials, pumped out or allowed to volatilize.

### ***Spills on Snow:***

Snow acts as a natural sorbent for spilled fuel. Impacted snow is easily visible, and can be shoveled into empty drums or barrels for proper disposal. If the spill is migrating down a hill, a snow dyke can be constructed to contain the spill. A plastic tarp can be placed at the base of the dyke, where spilled fuel is expected to pool. The collected fuel and impacted snow can be removed with absorbent materials, pumped out, or shoveled into barrels for disposal.

### ***Spills on Ice:***

Ice is considered impermeable to fuel, so these spills are generally easy to clean up. Small spills can be cleaned up by placing absorbent materials on top of the ice. Impacted snow and slush can then be removed by shovels, and placed in barrels for disposal. For larger spills, dykes of snow and trenches can be constructed to contain the spill. Pooled fuel can then be removed by adsorbent materials or pumped out. Impacted snow and slush can be shoveled into barrels for disposal.

### ***Worst Case Scenarios:***

Worst case scenarios include a dyke or trench overflowing and a large spill on water that cannot be contained with materials available in the community. In the first case, a trench or collection pit could be constructed downstream to collect the fuel. In the second case, an emergency response team would need to be called, with appropriate equipment to deal with the spill.

### **6.2.5      *Procedures for Transferring, Storing and Managing Spill Related Wastes***

Spills are generally cleaned up starting at the outer limit of the spill, and working towards the point of the spill. Sorbent materials and hand tools such as cans and shovels are used for smaller spills. Larger spills can be contained with the use of a pump and/or heavy equipment.

Spill wastes include used absorbent materials and containers of impacted water and snow. Sorbent materials should be placed in plastic bags for proper disposal. The containers of impacted water and snow should be sealed and stored until disposal at an approved facility can be arranged.

Following a spill, all used materials need to be properly washed and/or replaced.

### **6.2.6      *Procedures for Restoring Affected Areas***

Once a spill has been contained, community personnel will consult with regulatory personnel assigned to the file to determine the level of clean-up required. Regulatory personnel may request that a site specific study be conducted, to ensure appropriate clean-up levels are met.

## **7            RESOURCE INVENTORY**

### **7.1        On-site Resources**

It is recommended that the Hamlet of Grise Fiord retain one spill kit in the community, located at the Maintenance Garage. The spill kit should contain the following:

- 30 socks/booms (3" x 4')
- 30 pillows (2L)
- 24 dispersal bags
- 4 pairs gloves
- 2 pairs goggles
- 6 pairs Tyke coveralls
- 4 shovels
- 2 spill signs
- 2 repair putty
- 1 Emergency Response Guidebook
- 1 Safety and Compliance Directory
- 1 Spill Response Pocket Guide

This response kit is designed to contain and collect up to 56 gallons of spilled oil. Additional volumes will be accommodated with the use of absorbent products that will be maintained in inventory in sufficient quantities.

The following heavy equipment is also available in the community for spill containment:

- Loader
- Dozer

## **7.2 Off-site Resources**

The following resources are available for assistance if needed:

Territorial 24-Hour Spill Line	(867) 920-8130
Aboriginal and Northern affair Canada (AANDC)	(867) 669-2761
GN – Emergency Measures Officer	(888) 624-4043
RCMP (Grise Fiord)	(867) -980-1111
Environment Canada (Emergency) Yellowknife	(867)- 669-4725
GN Environmental Health Office	(867) -975-4817
Health Center	(867) - 980-9923
Air Nunavut	(867) -980-4018

Training Schedule and Recordkeeping:

Training will be conducted on an as-needed basis. Records will be kept in the community office.

**APPENDIX:**

**Appendix- A: Guidelines of water, wastewater and Leachate Sampling and testing**

**Appendix- B: Spill Reporting Form**

**REFERENCE:**

- Dillon Consulting Limited. “P lake Sewage Lagoon System”, produced for Department of Community and Government Services, Government of Nunavut, January 2006.

## **APPENDIX-A**

### **GUIDELINES FOR WATER, WASTEWATER AND LEACHATE SAMPLING AND TESTING**



# **Guide Lines for Water, Wastewater and Leachate sampling Baffin Communities**

## **Drinking water:**

### **Monthly Sampling: (Bacteria analysis)**

1. Collect five samples (**200 ml each**) from five different locations and send to Iqaluit Health Lab through your local health center. One of the five samples should be raw water sample.  
Once in month for Grise Fiord

### **Annual Sampling: (Bacteria and Chemical Analysis)**

2. Send samples to Caduecon Environmental Lab, Ottawa, Ontario.

Caduecon Environmental Lab  
Gord Murphy, Lab Supervisor  
2378 Holly Lane  
Ottawa, ON, K1V 7V1  
Ph-613-526-0123  
Fax-613-526-1244

### **Precautions of Sampling:**

1. Be careful not to let the mouth of the bottle or lid touch anything including sampler's fingers.
2. Do not overfill the bottle or rinse out
3. Fill the bottle to the 200ml line from water tap, valve or water truck delivery hose nozzle. When sampling from a water tap, remove screen, aerator or other attachment from tap and allow the cold water to run for 2-3 minutes before collecting. Do not dip into the filled water truck tank to take a sample.
4. Ensure each bottle label information is filled for:
  - Date and time sample was taken
  - Sample point location
  - Sampler's name
5. Persons' name and contact address where to send sample Test results and invoice.
6. Samples must arrive at the Labs either Iqaluit or Ottawa within 24 hrs. from the time of sampling.

## **Wastewater:**

1. Collect five treated samples from the first point of discharge of Sewage (end of pipe).
2. Collect Five raw samples directly from the truck discharge

## **Leachate:**

1. Collect five leachate samples from the land fill site

### **Sample bottles specifications for Wastewater and leachate:**

Five samples should be taken from a point in five different bottles:

Bottle 1: **500 ml**

Bottle 2: **100 ml**

Bottle3: **1000 ml**

Bottle 4: **250 ml**

**All the wastewater and Leachate samples will be sent to Caduecon Lab, Ottawa, ON.**

### **Precautions of sampling:**

1. Use hand gloves
2. Ensure each bottle level information is filled:
  1. -Date and time sample taken
  2. -Location with GPS coordinates
  3. -Sampler's name
3. Person's name and contact information where to send sample Test Results and invoice.
4. Samples must be arrived Ottawa Lab within 24 hours from the time of sampling.

**APPENDIX- B:**

**SPILL REPORTING FORM**



Canada

# NT-NU SPILL REPORT

OIL, GASOLINE, CHEMICALS AND OTHER HAZARDOUS MATERIALS

NT-NU 24-HOUR SPILL REPORT LINE

TEL: (867) 920-8130

FAX: (867) 873-6924

EMAIL: spills@gov.nt.ca

## REPORT LINE USE ONLY

<b>A</b>	REPORT DATE: MONTH – DAY – YEAR	REPORT TIME	<input type="checkbox"/> ORIGINAL SPILL REPORT, OR		REPORT NUMBER -
<b>B</b>	OCCURRENCE DATE: MONTH – DAY – YEAR	OCCURRENCE TIME	<input type="checkbox"/> UPDATE # TO THE ORIGINAL SPILL REPORT		
<b>C</b>	LAND USE PERMIT NUMBER (IF APPLICABLE)		WATER LICENCE NUMBER (IF APPLICABLE)		
<b>D</b>	GEOGRAPHIC PLACE NAME OR DISTANCE AND DIRECTION FROM THE NAMED LOCATION			REGION <input type="checkbox"/> NWT <input type="checkbox"/> NUNAVUT <input type="checkbox"/> ADJACENT JURISDICTION OR	
<b>E</b>	LATITUDE DEGREES                      MINUTES                      SECONDS		LONGITUDE DEGREES                      MINUTES                      SECONDS		
<b>F</b>	RESPONSIBLE PARTY OR VESSEL NAME	RESPONSIBLE PARTY ADDRESS OR OFFICE LOCATION			
<b>G</b>	ANY CONTRACTOR INVOLVED	CONTRACTOR ADDRESS OR OFFICE LOCATION			
<b>H</b>	PRODUCT SPILLED	QUANTITY IN LITRES, KILOGRAMS OR CUBIC METRES		U.N. NUMBER	
	SECOND PRODUCT SPILLED (IF APPLICABLE)	QUANTITY IN LITRES, KILOGRAMS OR CUBIC METRES		U.N. NUMBER	
<b>I</b>	SPILL SOURCE	SPILL CAUSE		AREA OF CONTAMINATION IN SQUARE METRES	
<b>J</b>	FACTORS AFFECTING SPILL OR RECOVERY	DESCRIBE ANY ASSISTANCE REQUIRED		HAZARDS TO PERSONS, PROPERTY OR ENVIRONMENT	
<b>K</b>	ADDITIONAL INFORMATION, COMMENTS, ACTIONS PROPOSED OR TAKEN TO CONTAIN, RECOVER OR DISPOSE OF SPILLED PRODUCT AND CONTAMINATED MATERIALS				
<b>L</b>	REPORTED TO SPILL LINE BY	POSITION	EMPLOYER	LOCATION CALLING FROM	TELEPHONE
<b>M</b>	ANY ALTERNATE CONTACT	POSITION	EMPLOYER	ALTERNATE CONTACT LOCATION	ALTERNATE TELEPHONE