

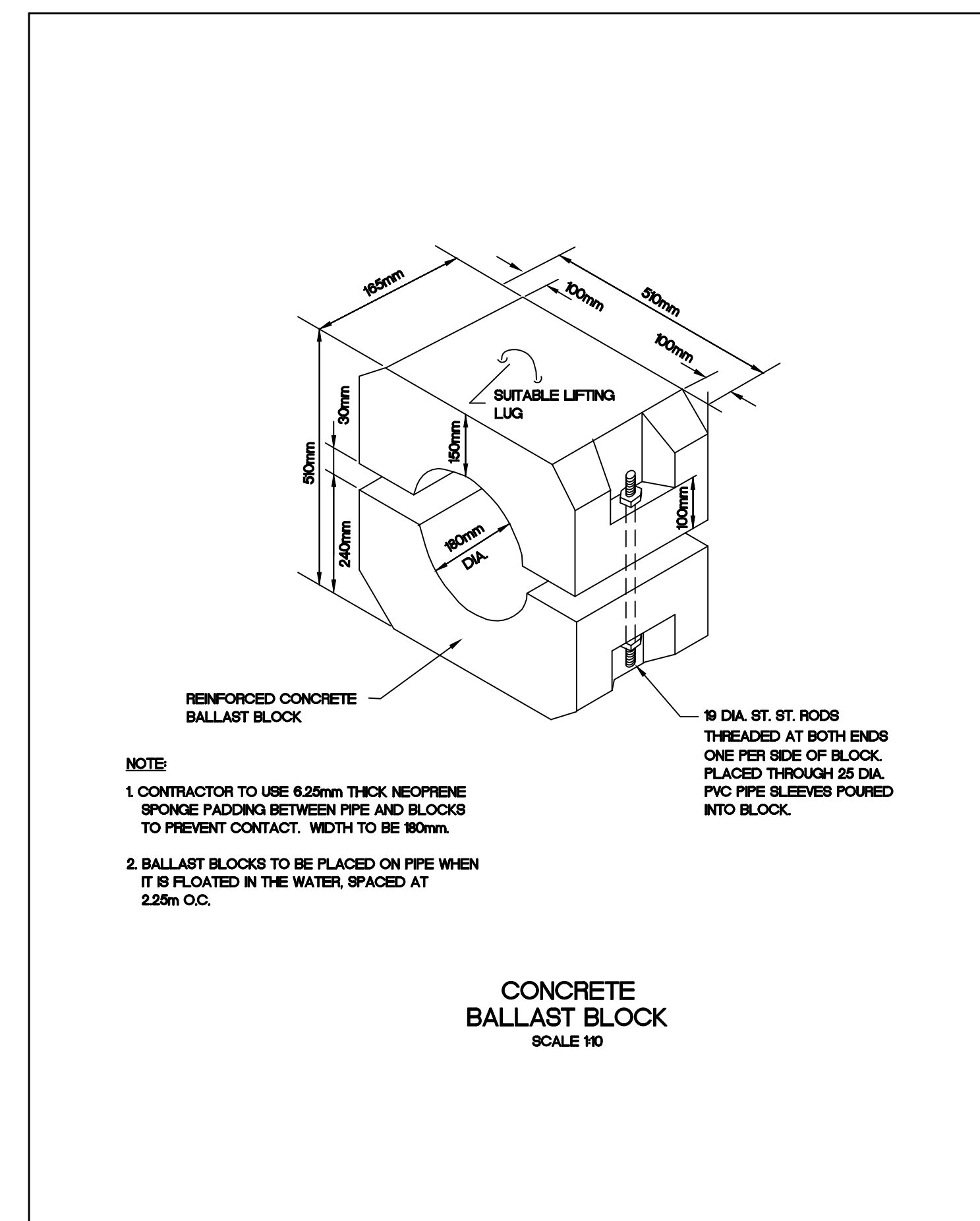
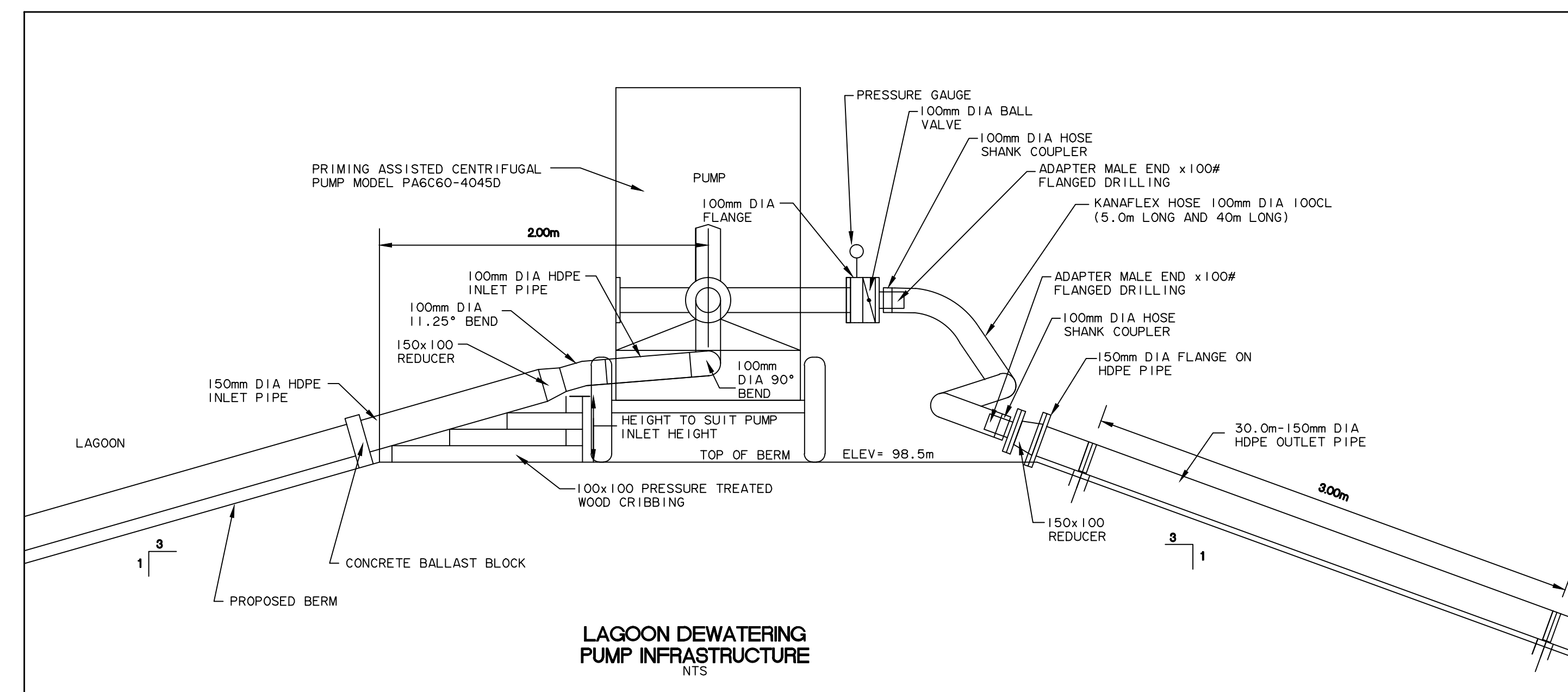
### LEGEND

## AS-BUILT

DATE: SEPTEMBER 30, 2011

BENCH MARK

BM 1 ELEV. = 102.72m  
RE-BAR PLANTED EAST OF THE ACCESS ROAD ACROSS FROM  
THE EXISTING TRUCK DISCHARGE POINT AND 2.9m FROM THE  
FACE OF THE CHAIN LINK FENCE.

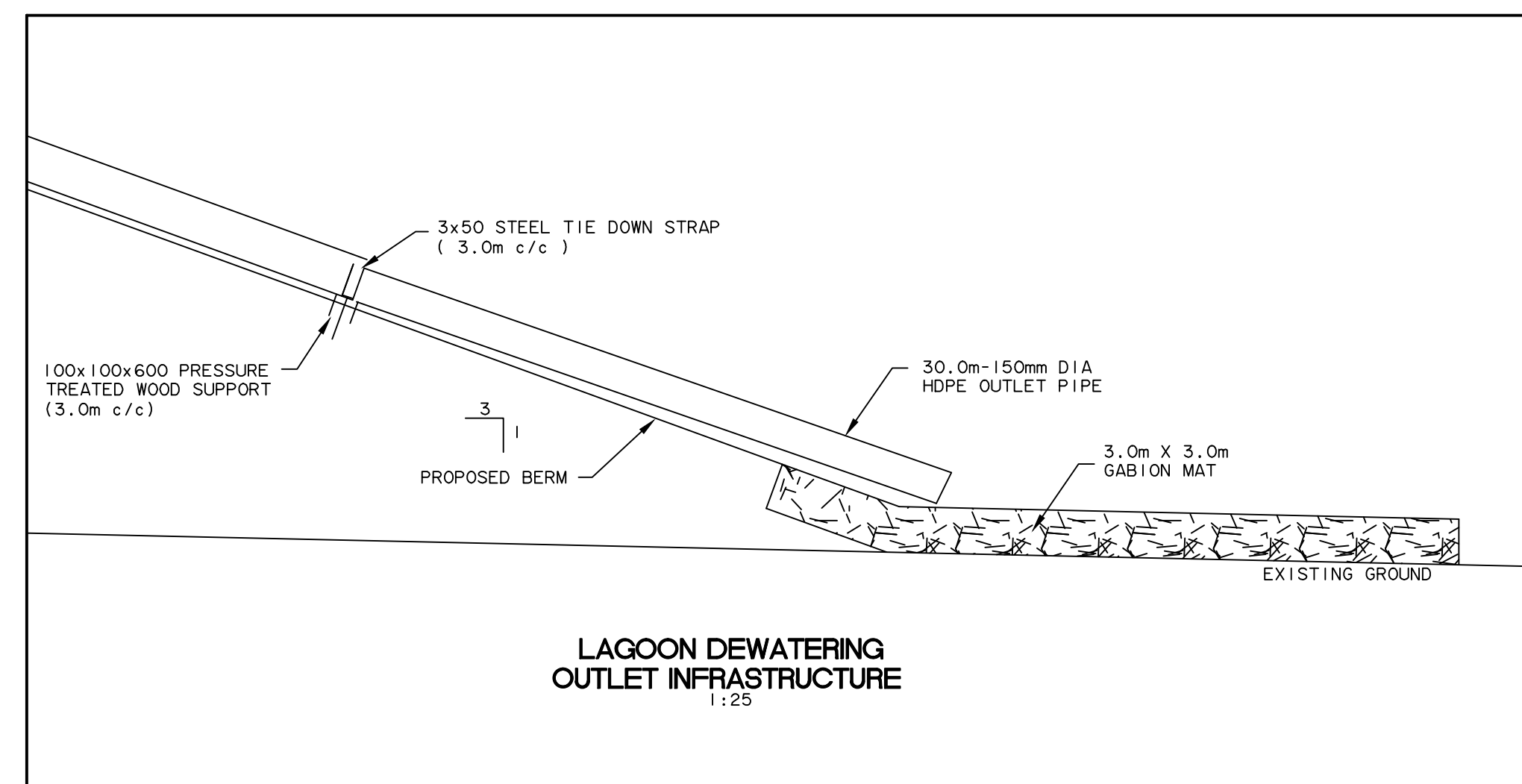
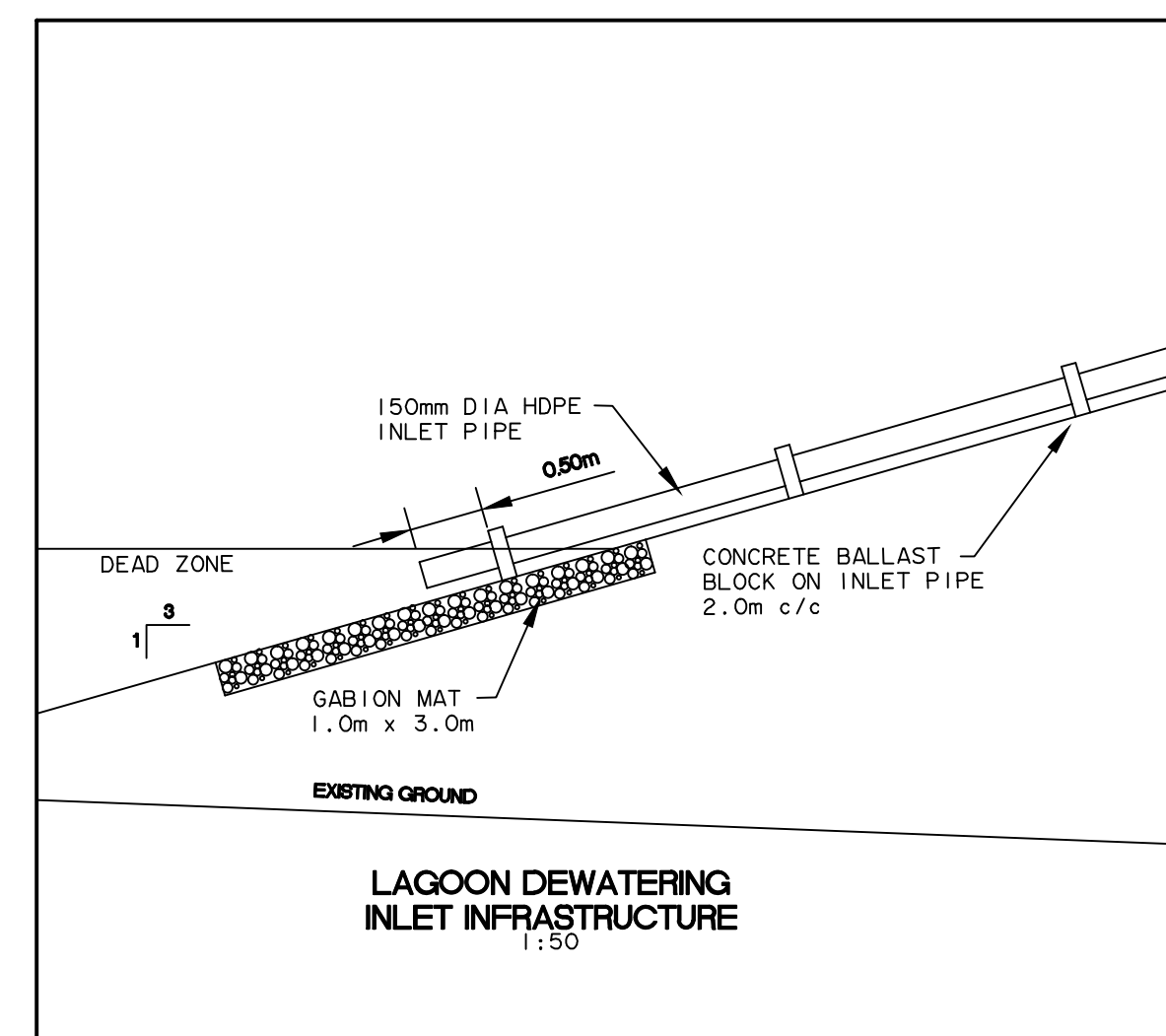


**NOTE**

1. CONTRACTOR TO USE 6.25mm THICK NEOPRENE SPONGE PADDING BETWEEN PIPE AND BLOCKS TO PREVENT CONTACT. WIDTH TO BE 180mm.
2. BALLAST BLOCKS TO BE PLACED ON PIPE WHEN IT IS FLOATED IN THE WATER, SPACED AT 2.25m O.C.

— 19 DIA. ST. ST. RODS  
THREADED AT BOTH ENDS  
ONE PER SIDE OF BLOCK.  
PLACED THROUGH 25 DIA.  
PVC PIPE SLEEVES POURED  
INTO BLOCK.

CONCRETE  
BALLAST BLOCK  
SCALE 1/10



 **Trow Associates Inc.**  
154 Colonnade Road South  
Ottawa, Ont. K2E 7J5  
Tel: (613) 225-9940  
Fax: (613) 225-7337

CLIENT

GOVERNMENT OF NUNAVUT

PROJECT  
KIMMIRUT WASTEWATER LAGOON

TITLE	
DETAILS	

design by	SAD	project no. OTCD0001888  drawing no.  <div style="font-size: 2em; font-weight: bold;">DE-1</div>
drawn by	MEB	
checked by	SLB	
date	4/01/2008	
scale	AS SHOWN	

DE-1