

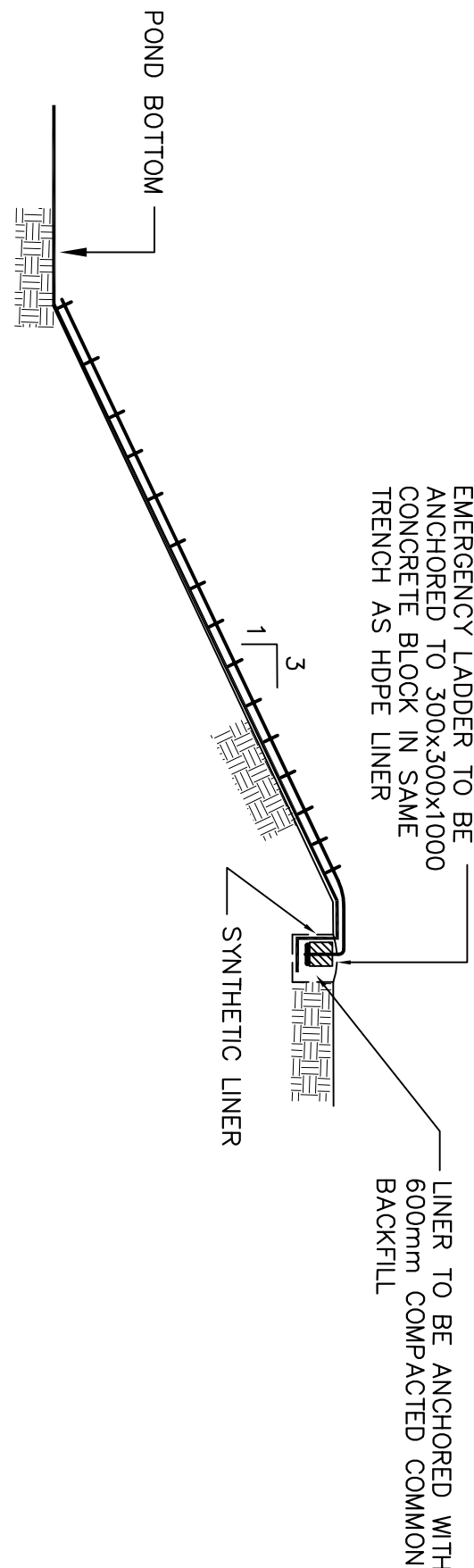
SECTION A-A

LADDER ANCHOR CONCRETE BLOCK DETAIL

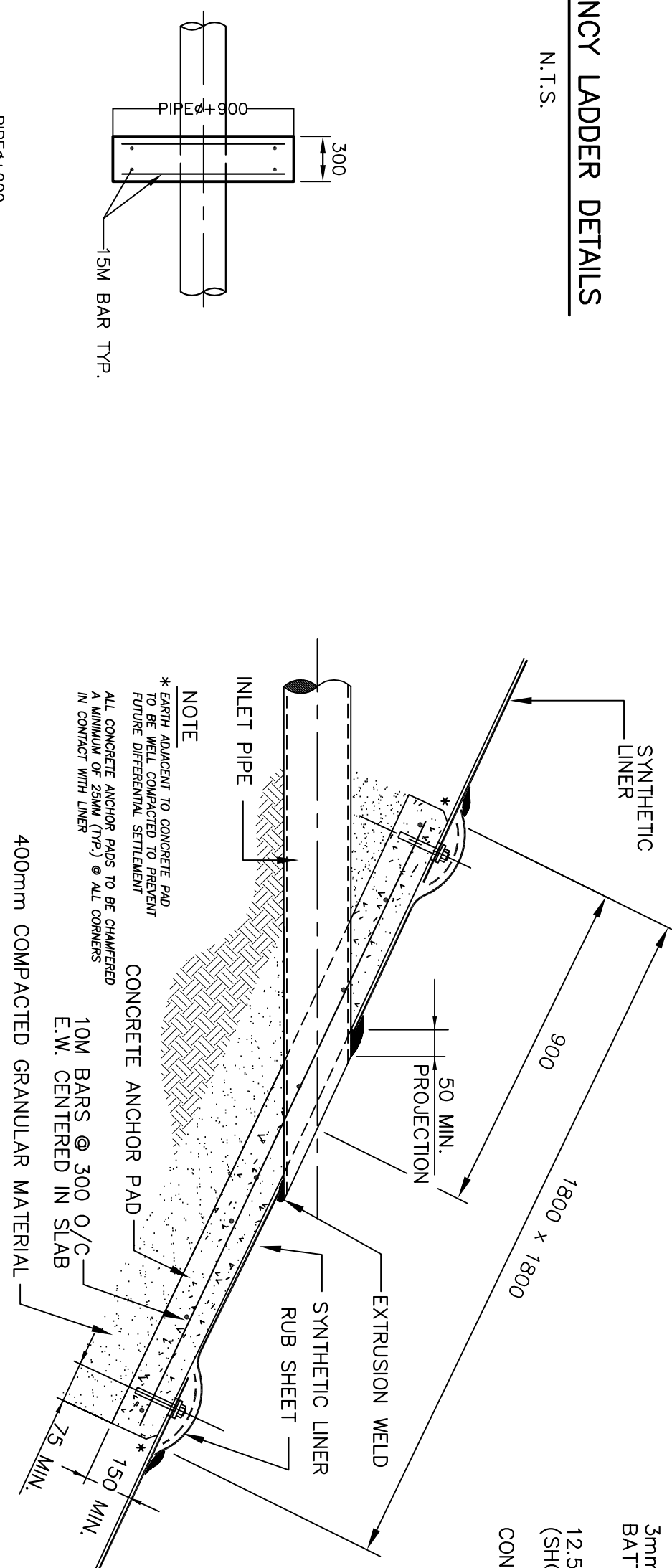
NOTE: REINFORCEMENT TO BE CONSTRUCTED OF NATIVE BERM TO BE CONSTRUCTED OF NATIVE

TYPICAL OVERFLOW DETAIL

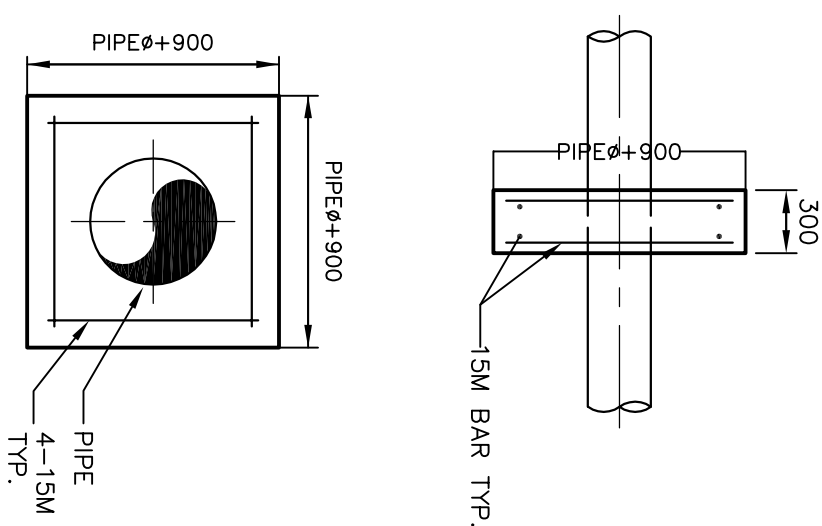
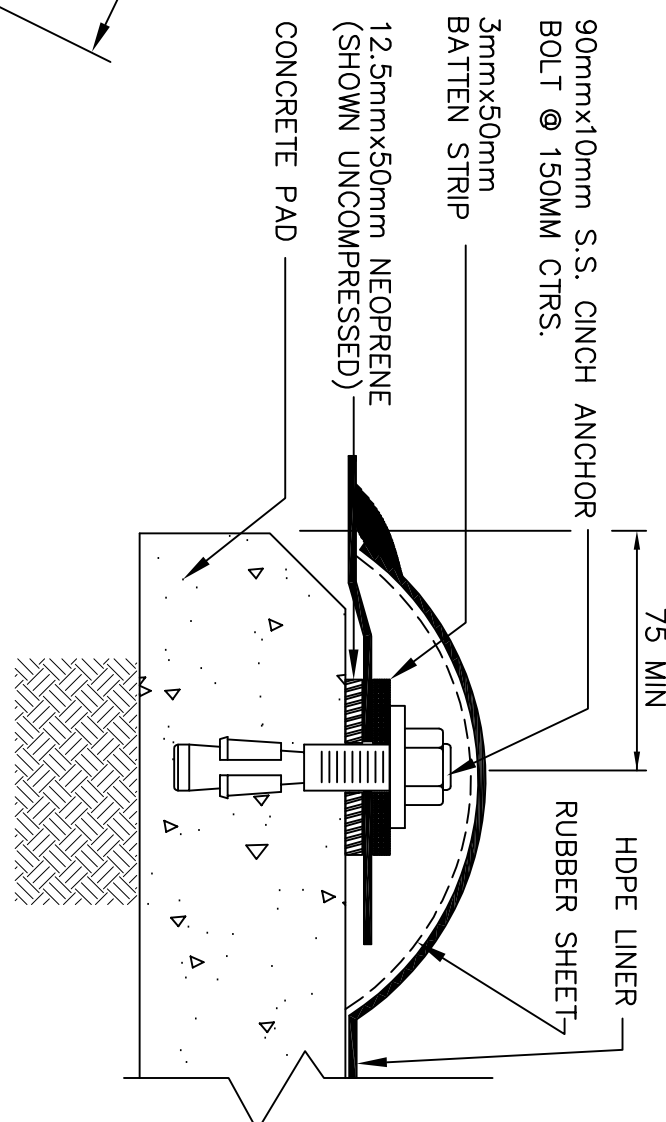
NTS



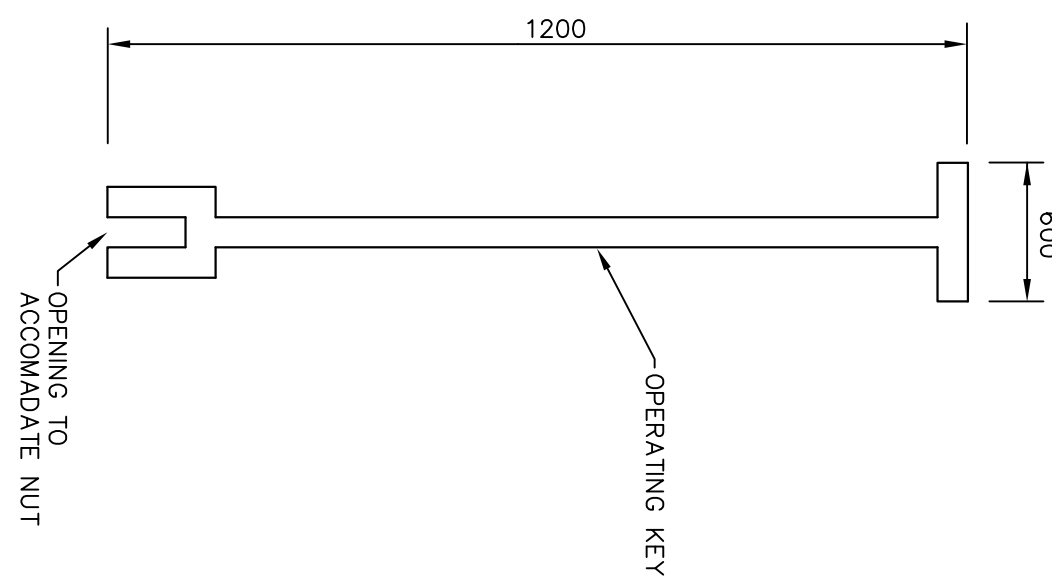
ANCHOR INSTALLATION DETAIL



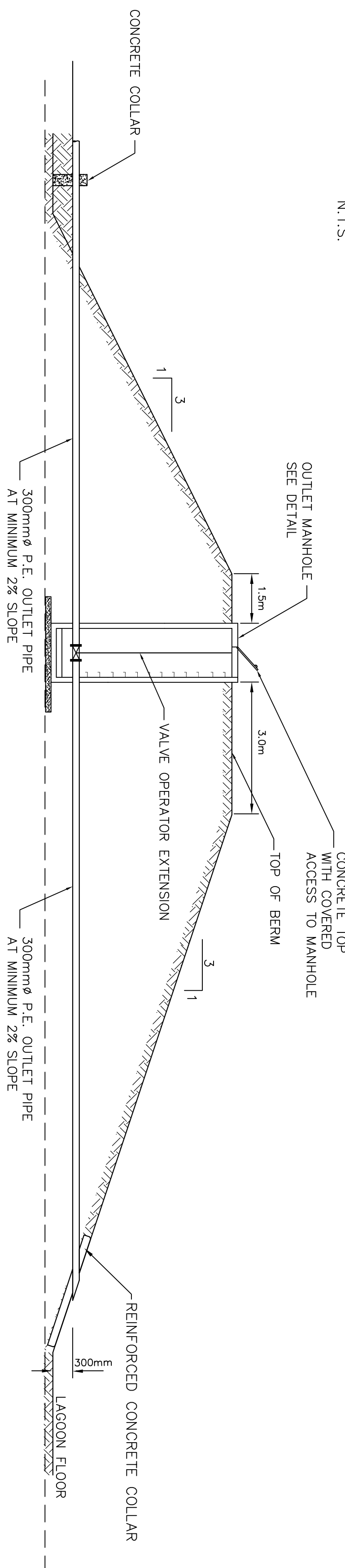
TYPICAL ANCHOR BOLT DETAIL



TYPICAL LINER/PIPE PENETRATION DETAIL






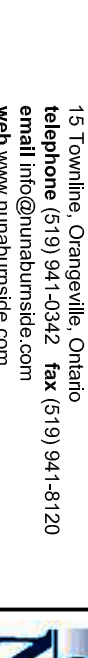
CONCRETE COLLAR



OPERATING KEY

LAGOON OUTLET CHAMBER

N.T.S.

1. This drawing is the exclusive property of Burns Burnside Engineering and Environmental Ltd. and the reproduction of this drawing without prior written consent of this office is strictly prohibited.			
2. The contractor shall verify all dimensions, levels, and elevations on site and report any discrepancies or omissions to this office prior to construction.			
3. This drawing is to be read and understood in conjunction with all other plans and documents applicable to this project.			
No.	Issue / Revision	Date	
1	Client Review and Approval	April 10, 2006	
2	Client Review and Approval	June 26, 2006	
3	Issued for Tender	July 17, 2006	
4	General Revisions – Client Review and Approval	March 21, 2007	
5	Issued for Construction	May 2, 2007	
<div style="border: 1px solid black; padding: 5px;"> PERMIT TO PRACTICE Burnside Engineering and Environmental Ltd.  Date: <u>March 18, 2007</u> PERMIT NUMBER: P 535 The Association of Professional Engineers, Geologists and Geophysicists of Ontario (www.a.p.e.g.a.org) </div>			
			
NOTES: 1. ALL AREAS DISTURBED BY CONTRACTOR DURING CONSTRUCTION ACTIVITIES SHALL BE RESTORATED TO ORIGINAL CONDITION OR BETTER, BY THE CONTRACTOR.			
<div style="display: flex; align-items: center;">  <div> <p>BURNSIDE</p> <p>Burns Burnside Engineering and Environmental Ltd. Box 172, 25 Third Avenue, Eden Hill, NJ Telephone (847) 645-2762 Fax (847) 645-2765 Telefax (847) 645-2765 Fax (847) 645-2765 Telefax (847) 645-2765 Fax (847) 645-2765 Website: www.burnsburnside.com</p> </div> </div>			
			
GOVERNMENT OF NUNAVUT PROJECT MANAGEMENT DIVISION DEPARTMENT OF COMMUNITY AND GOVERNMENT SERVICES (CSS) KITCHMEET REGION P.O. BOX 200 CAMBRIDGE BAY, NUNAVUT X0B 0C0			
Drawing Title		THE HAMLET OF KUGLUKTUK PROPOSED SEWAGE LAGOON DETAILS – SHEET NO. 1	
Drawn By	Checked By	Scale	4
Drawn By: NTS	Checked By: X, F. Francis	Scale: N = 0-0345.0	
Drawn By: NTS	Checked By: NTS	Scale: N = 0-0345.0	