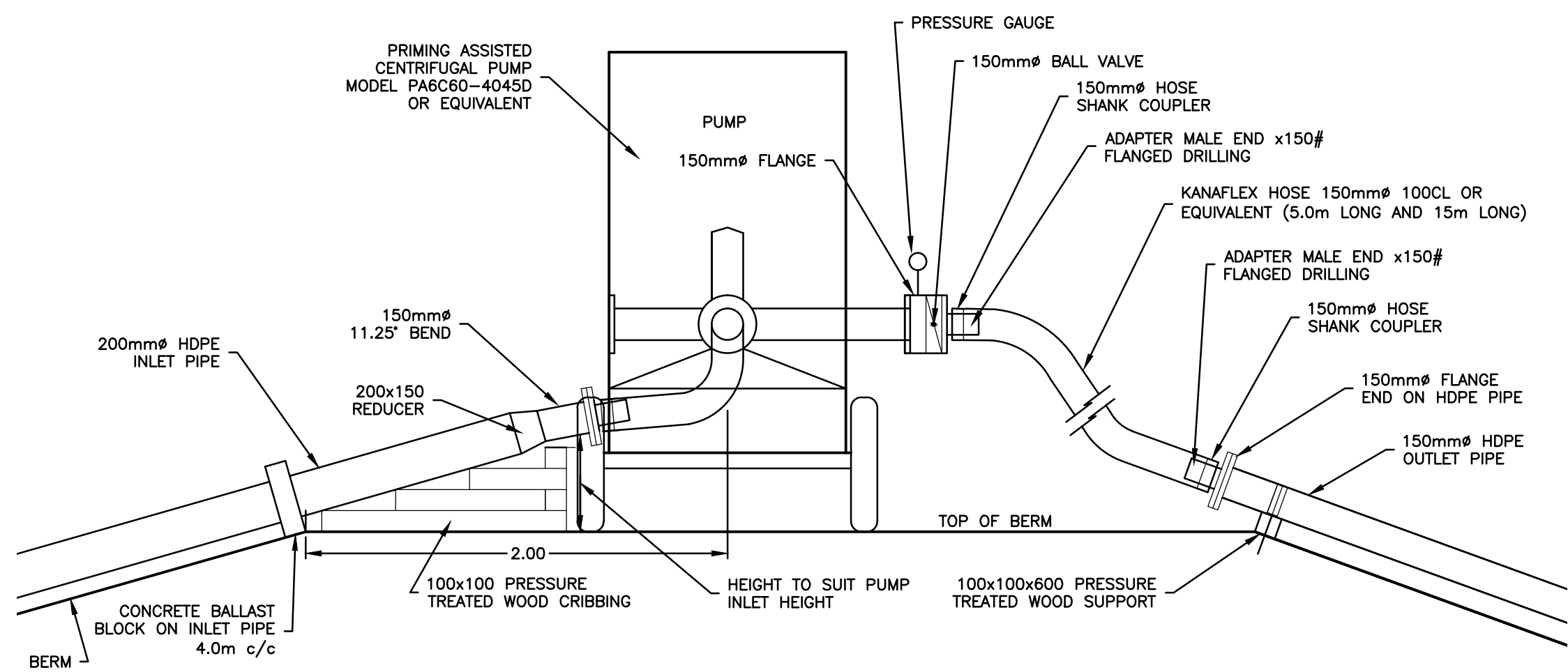
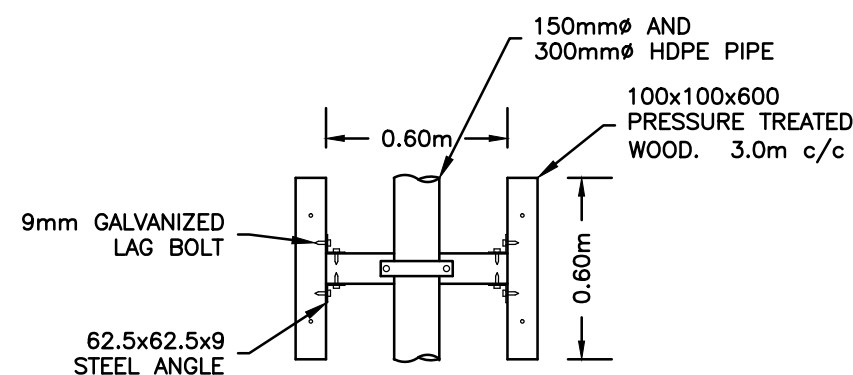


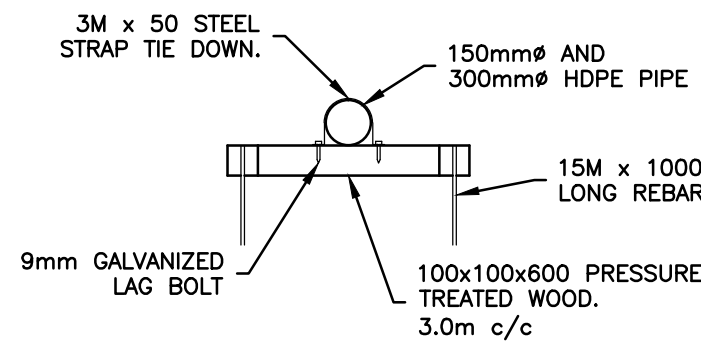
LAGOON DEWATERING PUMP INFRASTRUCTURE PLAN VIEW  
1:25



LAGOON DEWATERING PUMP INFRASTRUCTURE  
1:25

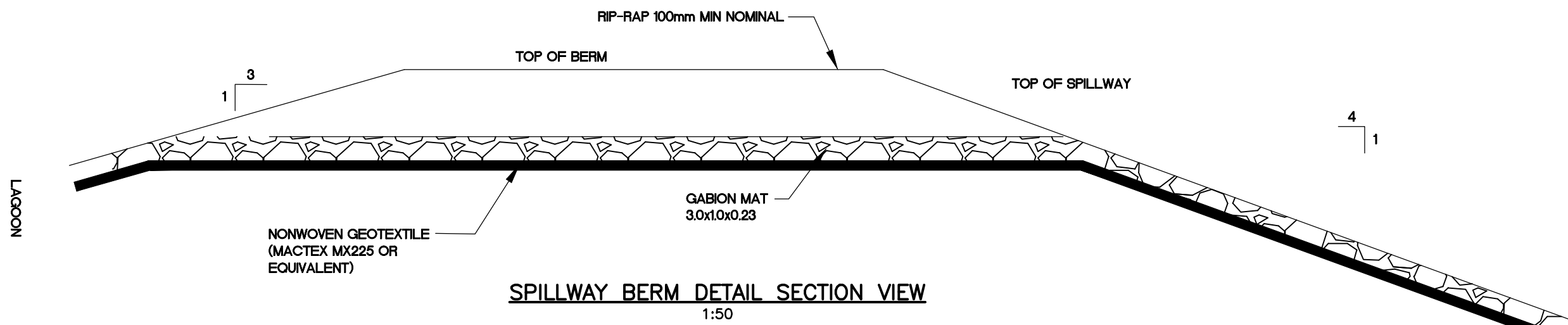


PLAN VIEW

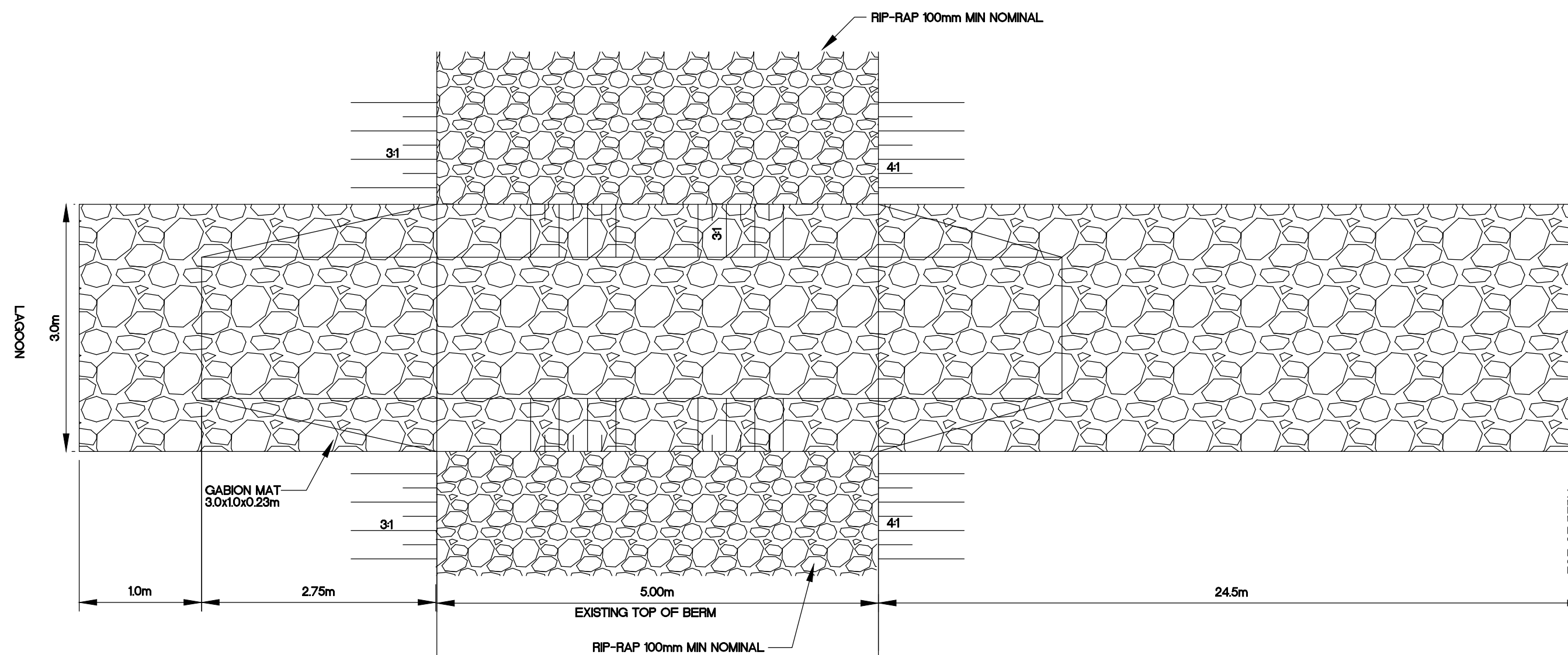


SECTION VIEW

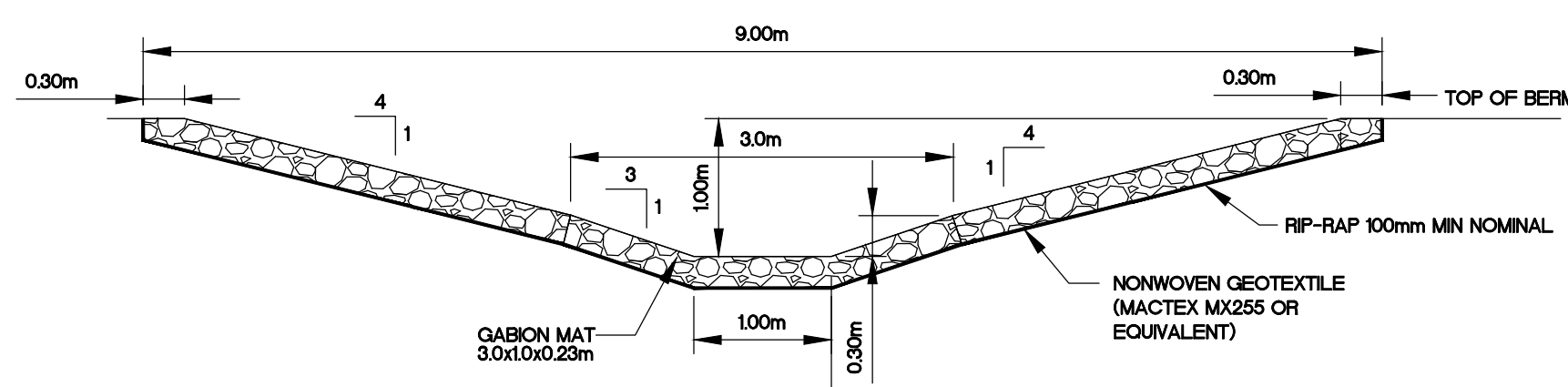
OUTLET PIPE SUPPORT  
1:25



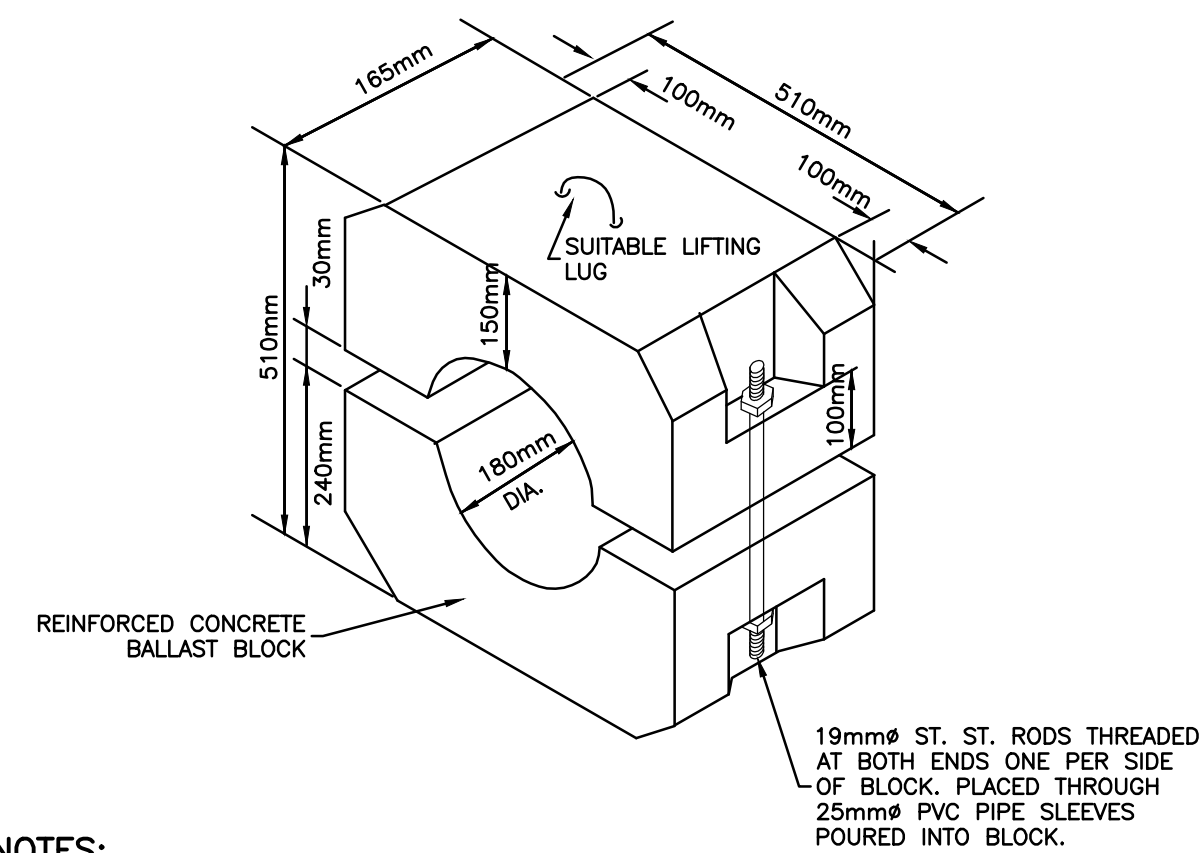
SPILLWAY BERM DETAIL SECTION VIEW  
1:50



SPILLWAY BERM DETAIL PLAN VIEW  
1:50



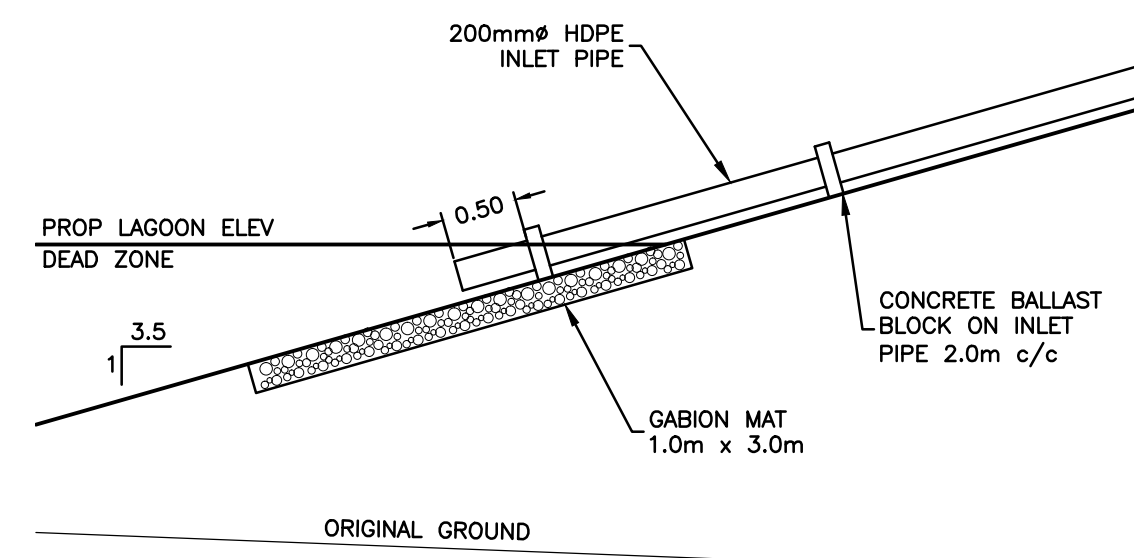
SPILLWAY BERM DETAIL SECTION VIEW  
1:50



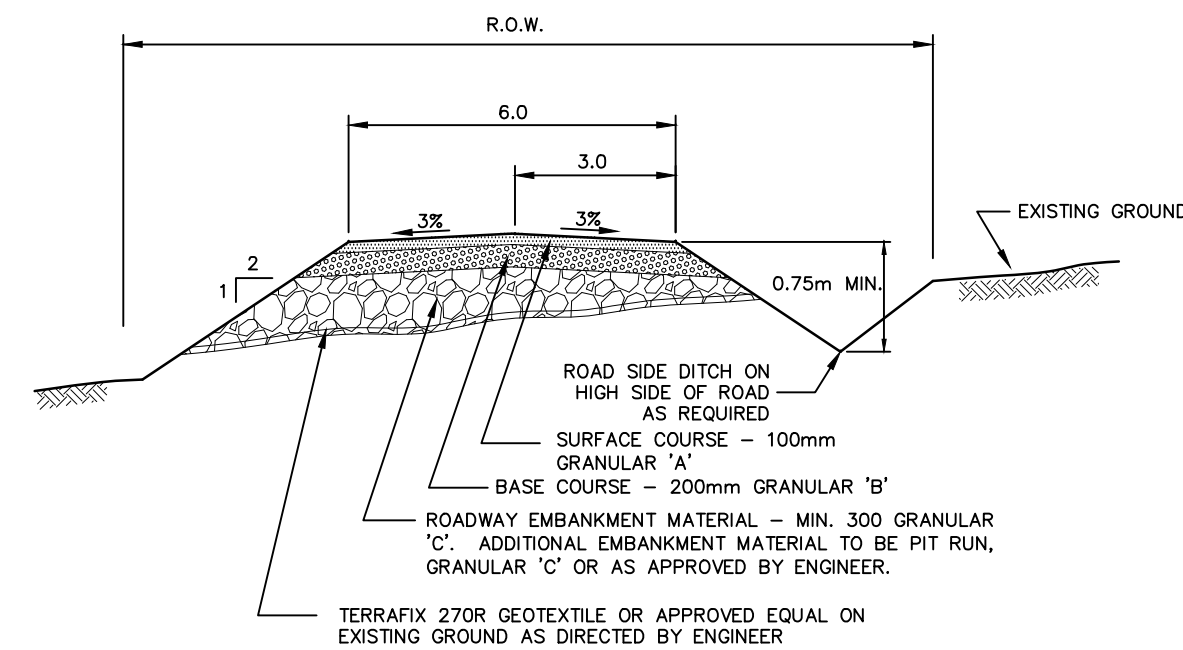
NOTES:

- CONTRACTOR TO SUBMIT SHOP DRAWINGS FOR CONCRETE BALLAST BLOCKS C/W REINFORCING.
- CONTRACTOR TO USE 6.25mm THICK NEOPRENE SPONGE PADDING BETWEEN PIPE AND BLOCKS TO PREVENT CONTACT. WIDTH TO BE 180mm.

CONCRETE BALLAST BLOCK  
N.T.S



LAGOON DEWATERING INLET  
1:50



ROAD EMBANKMENT SLOPED GROUND  
N.T.S

NOTES

THE POSITION OF ALL POLE LINES, CONDUITS, WATERMAINS, SEWERS AND OTHER UNDERGROUND AND OVERGROUND UTILITIES AND STRUCTURES IS NOT NECESSARILY SHOWN ON THE CONTRACT DRAWINGS, AND WHERE SHOWN, THE ACCURACY OF THE POSITION OF SUCH UTILITIES AND STRUCTURES IS NOT GUARANTEED. BEFORE STARTING WORK, DETERMINE THE EXACT LOCATION OF ALL SUCH UTILITIES AND STRUCTURES AND ASSUME ALL LIABILITY FOR DAMAGE TO THEM.

**PRELIMINARY**  
NOT FOR CONSTRUCTION

NO.	REVISION DESCRIPTION	DATE	BY	APPD	NO.	REVISION DESCRIPTION	DATE	BY	APPD
					1	ISSUED FOR REVIEW	10/11/13	IPC	SLB

SCALE

DESIGNED BY	REVIEWED BY	CLIENT

GOVERNMENT OF NUNAVUT  
DEPARTMENT OF COMMUNITY  
AND GOVERNMENT SERVICES



exp Services Inc.  
1-813-688-1880 / 1-813-225-7337  
3600 Lakeshore Drive, Suite 100  
Ottawa, ON K2B 8K6  
Canada  
www.exp.com  
• BUILDINGS • EARTH & ENVIRONMENT • ENERGY •  
• INDUSTRIAL • INFRASTRUCTURE • SUSTAINABILITY •

BASEPLAN	PROJECT
S.BUTLER	SEWAGE LAGOON
S.DOUGLAS	REPULSE BAY, NUNAVUT
S.DOUGLAS	
I.CRAWFORD	
S.BURDEN	

DETAIL PLAN

PROJ. NO. OTT-00207086A

SURVEY exp

DATE OCT 11, 2013

DRAWING NO. DE-1