


PARTIAL DEMOLITION PLAN - ALONG GRID LINE '1'

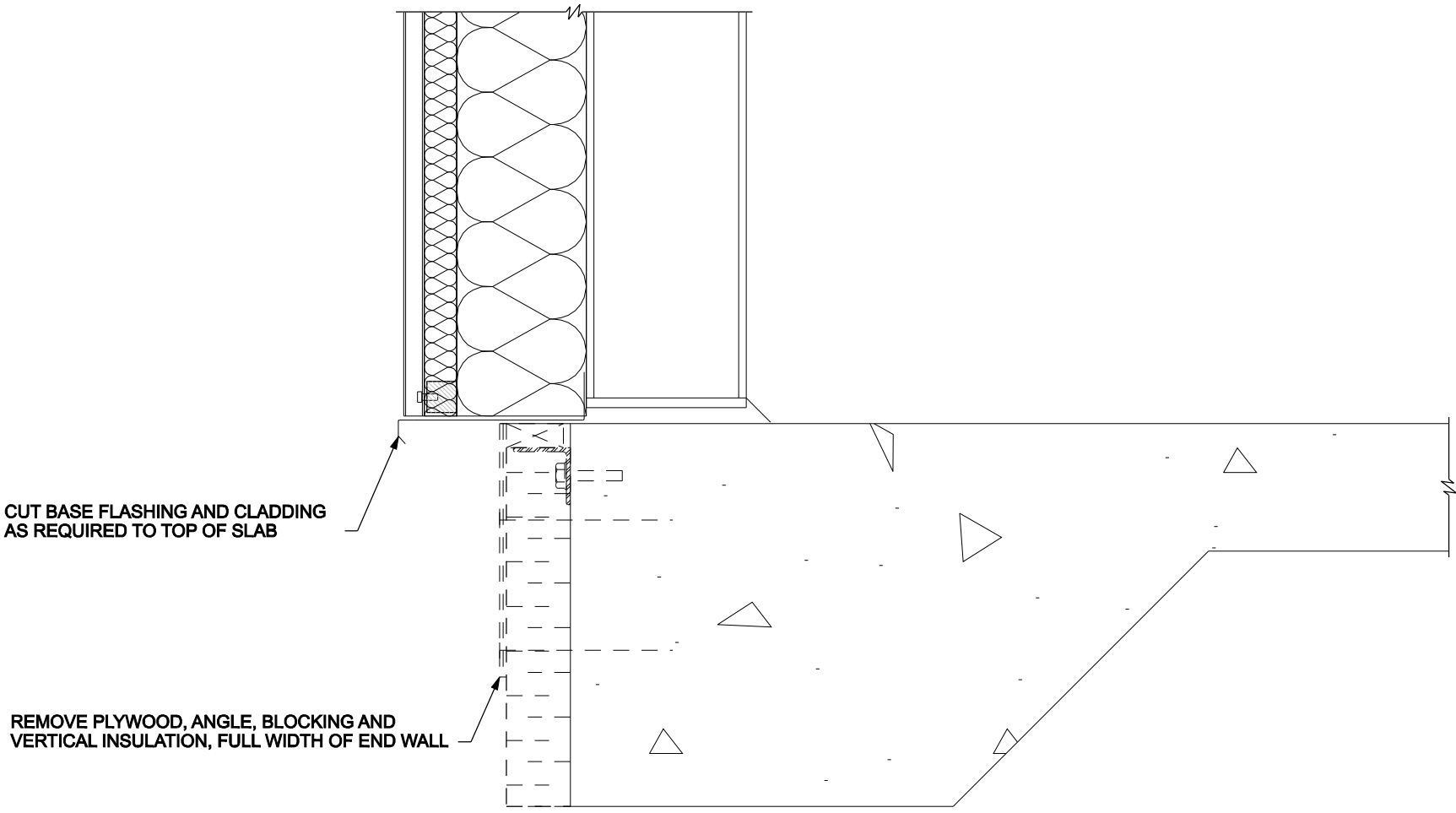
1:50

DEMOLITION KEYNOTES

- 1 REMOVE DOOR, FRAME, AND HARDWARE. SALVAGE FOR REINSTALLATION.
- 2 REMOVE EXTERIOR CLADDING, INSULATION, AND INTERIOR LINER PANEL.
- 3 REMOVE STRUCTURAL GIRTS.
- 4 REMOVE DOOR JAMB CHANNEL.
- 5 REMOVE PORTION OF STRUCTURAL GIRT AS SHOWN.
- 6 OPENING TO BE MADE AS CLOSE AS POSSIBLE TO PARTITION ON OPPOSITE SIDE OF WALL.
- 7 REMOVE STEEL ANGLE AND 30x140 FULL WIDTH. TEMPORARILY SUPPORT CLADDING UNTIL NEW SLAB IS IN PLACE
- 8  - REMOVE CLADDING AND THERMAL BLOCKING WHERE SHOWN
- 9 RELOCATED FRAMING TO NEW DUCT LOCATION. SEE DWG. M1507-1.

GENERAL DEMOLITION NOTES

1. REMOVE ITEMS C/W ALL FASTENERS.
2. COORDINATE REMOVALS WITH OTHER TRADES.
3. COORDINATE REMOVALS WITH ITEMS REMAINING AND NEW WORK WHERE APPLICABLE.
4. REMOVE ITEMS IN A MANNER THAT WILL LEAVE REMAINING SURFACES ACCEPTABLE TO RECEIVE NEW WORK.
5. REMOVE COMPLETE ASSEMBLIES AT ALL AREAS TO BE DEMOLISHED (EXCEPT WHERE NOTED).
6. CONTRACTOR TO REMOVE AND DISPOSE OF ALL ITEMS WITHIN DEMOLITION AREA.
7. CONTRACTOR IS RESPONSIBLE FOR TEMPORARY REMOVAL AND SUPPORT OF ANY ITEMS FASTENED TO WALL AND ROOF, AND REATTACHMENT OF THE SAME, FOLLOWING INSTALLATION OF NEW BUILDING WALL AND ROOF ENVELOPE.
8. ALL DIMENSIONS TO BE CONFIRMED ON SITE BY CONTRACTOR. REPORT ANY DISCREPANCIES TO ENGINEER.

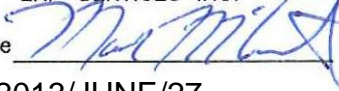


SECTION A
1:10


No.	Issue	Date
1	ISSUED FOR TENDER	2013-APR-10
2	RELEASED FOR CONSTRUCTION	2013-JUNE-27



No.	Revision	Ckd. By	Date
-----	----------	---------	------

PERMIT OF PRACTICE
EXP SERVICES INC.
Signature 
Date 2013/JUNE/27
PERMIT NUMBER: P483
NT/NU Association of Professional Engineers and Geoscientists

RELEASED FOR CONSTRUCTION

	Const. North
	Drawn By: ECM
	Dwg. Standards Ckd. By: RWS
	Designed By: MJM
Date Printed	Dwg. Design Ckd. By: MJM

exp Services Inc.
t: +1.613.688.1899 | f: +1.613.225.7330
2650 Queensview Drive, Unit 100
Ottawa, ON K2B 8H6
CANADA
www.exp.com



• BUILDINGS • EARTH & ENVIRONMENT • ENERGY •
• INDUSTRIAL • INFRASTRUCTURE • SUSTAINABILITY •

Project Title
**WASTEWATER
TREATMENT PLANT
UPGRADE
PANGNIRTUNG, NU**

Dwg. Title
**DEMOLITION
PARTIAL PLAN
WEST WALL ELEVATION
ALONG GRID LINE '1'**

Project No.	OTT-00204430-A0	
Dwg. No.	A600-1	Rev. No. 0
Scale	AS SHOWN This drawing is not to be scaled	