	Const. North	
	Drawn By:	ARL/PC
	Dwg. Standards Ckd. By:	PD
Date Printed	Designed By:	DFB
	Dwg. Design Ckd. By:	SAO



Project Title _____

Dwg. Title

Project No. OTT-00204430-A0

Dwg. No.	P402-3	Rev. No.	0
----------	---------------	----------	---

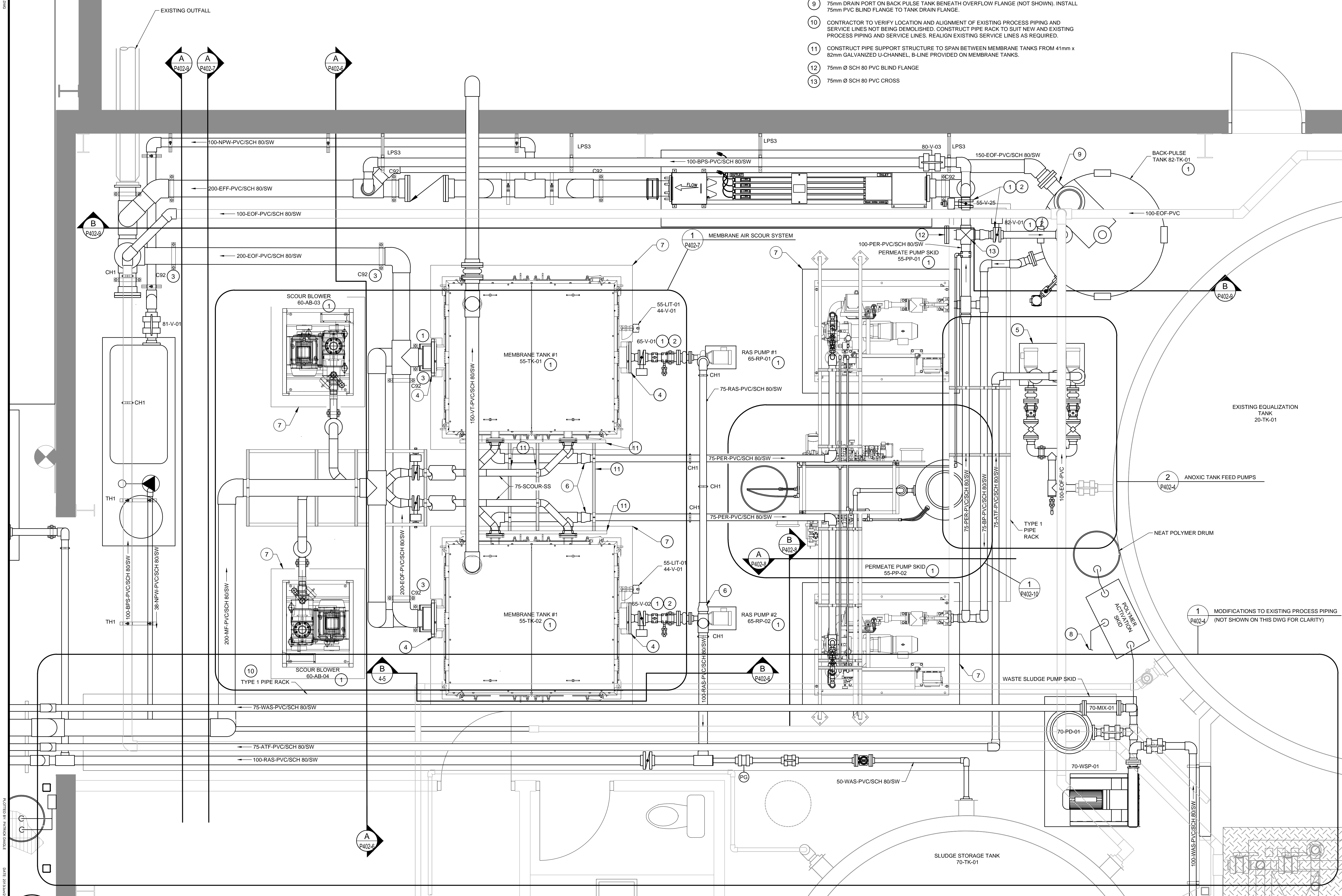
Scale

AS SHOWN

This drawing is not to be scaled

- 1 OWNER SUPPLIED EQUIPMENT. INSTALL PER MANUFACTURER'S GUIDELINES.
- 2 ORIENT PNEUMATIC VALVE ACTUATOR TO AVOID INTERFERENCES AND MAINTAIN ACCESS ROUTES. SUPPORT ACTUATOR AS REQUIRED.
- 3 USE 100mm Ø SCH. 40 GALVANIZED STEEL EXTENSION PIPE.
- 4 FORM NOTCH IN HOUSEKEEPING PAD TO ACCOMMODATE FLANGE AND PIPING.
- 5 CONCRETE HOUSEKEEPING PAD, HEIGHT TO ALIGN PUMP SUCTION WITH PIPING AS SHOWN.
- 6 100mm x 75mm SCH 80 PVC ECCENTRIC REDUCER WITH FLAT SIDE UP.
- 7 CONCRETE HOUSEKEEPING PAD, SIZED TO SUIT.
- 8 FIELD ROUTE FROM OVERHEAD NPW LINE. LINE SIZE AND FITTINGS TO MATCH WATER INLET AT POLYMER ACTIVATION SKID.
- 9 75mm DRAIN PORT ON BACK PULSE DRAIN TANK BENEATH OVERFLOW FLANGE (NOT SHOWN). INSTALL 75mm PVC BLIND FLANGE TO TANK DRAIN FLANGE.
- 10 CONTRACTOR TO VERIFY LOCATION AND ALIGNMENT OF EXISTING PROCESS PIPING AND SERVICE LINES NOT BEING DEMOLISHED. CONSTRUCT PIPE RACK TO SUIT NEW AND EXISTING PROCESS PIPING AND SERVICE LINES. REALIGN EXISTING SERVICE LINES AS REQUIRED.
- 11 CONSTRUCT PIPE SUPPORT STRUCTURE TO SPAN BETWEEN MEMBRANE TANKS FROM 41mm x 82mm GALVANIZED U-CHANNEL. B-LINE PROVIDED ON MEMBRANE TANKS.
- 12 75mm Ø SCH 80 PVC BLIND FLANGE
- 13 75mm Ø SCH 80 PVC CROSS

1. EXISTING PIPING AND EQUIPMENT IS SHOWN IN GREY.
2. LOCATION AND ALIGNMENT OF EXISTING PIPING AND EQUIPMENT SHOWN AS APPROXIMATE. CONTRACTOR TO VERIFY ALL LOCATIONS AND ALIGNMENT AND MAKE ADJUSTMENTS AS REQUIRED.
3. NOT ALL EXISTING PROCESS PIPING AND SERVICES LINES SHOWN.



1	EXPANDED PLAN
P402-1	PROCESS PIPING IN EXISTING BUILDING AREA