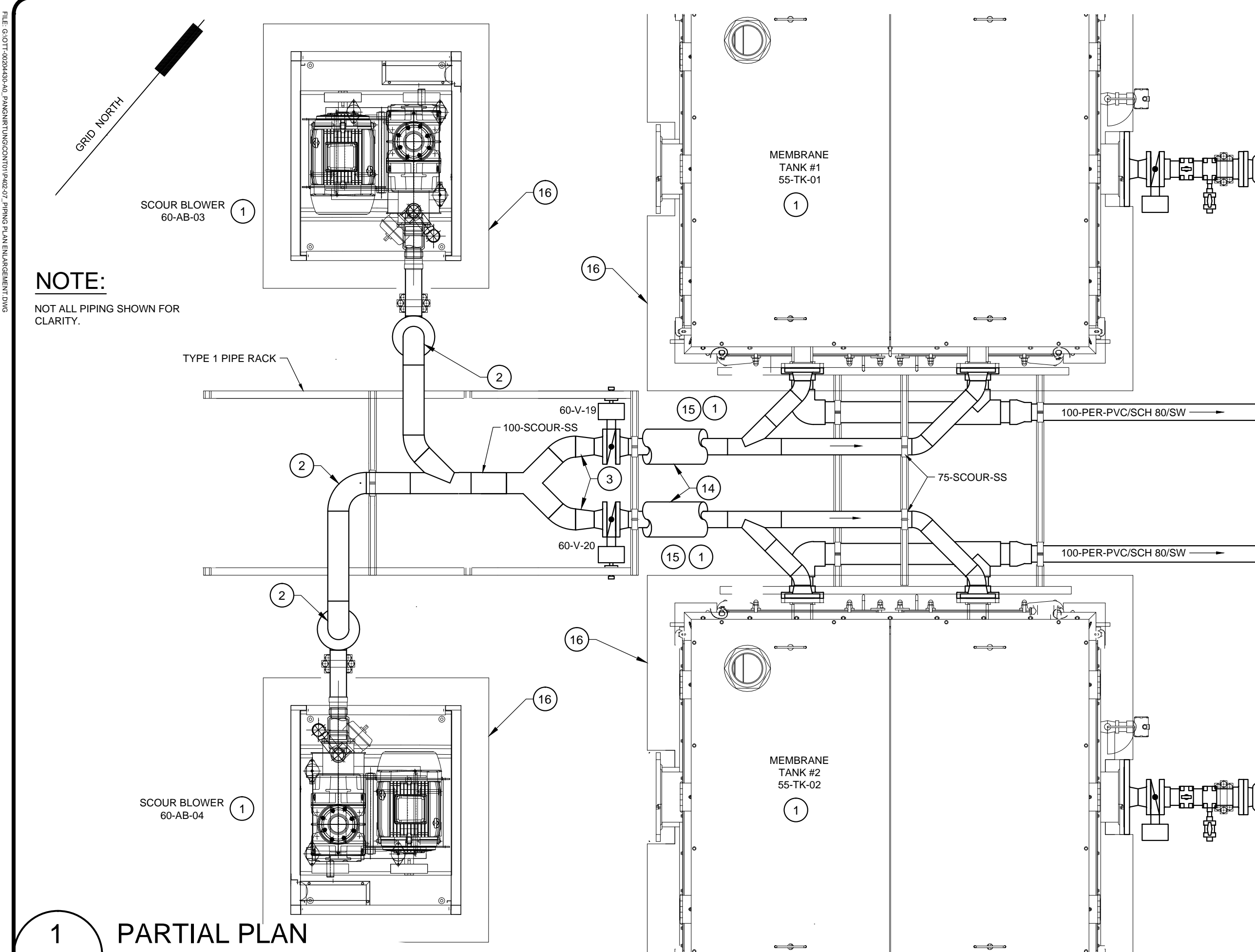


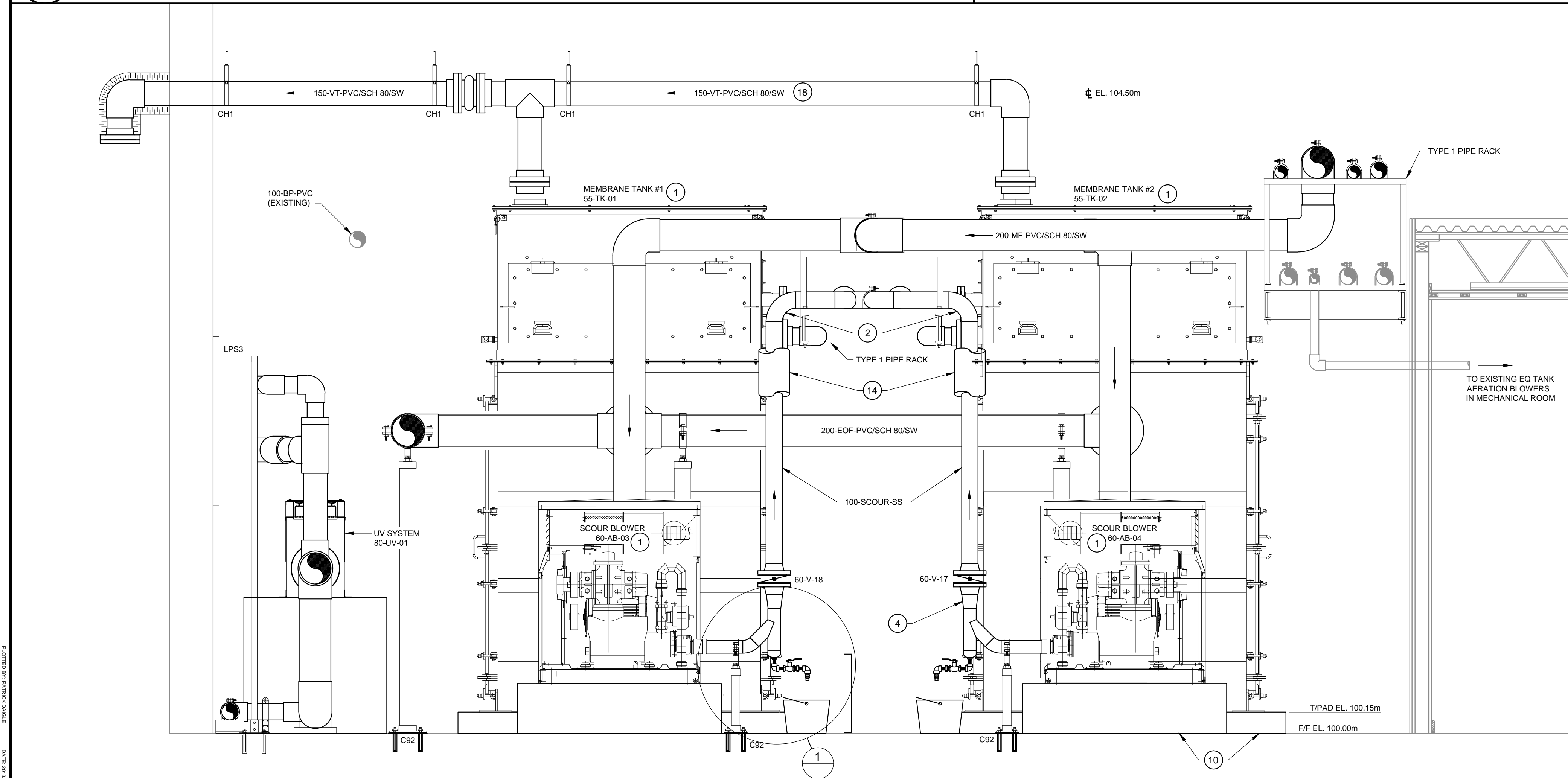
DATE: 2013-06-27
DRAWN: J. BLISS
CHECKED: J. BLISS
APPROVED: J. BLISS



- KEYNOTES:**
- OWNER - SUPPLIED EQUIPMENT. INSTALL IN ACCORDANCE WITH MANUFACTURER'S GUIDELINES.
 - 100mm Ø SS LONG RADIUS ELBOW
 - 100mm x 75mm ECCENTRIC REDUCER WITH FLAT SIDE DOWN.
 - 100mm x 75mm CONCENTRIC REDUCER
 - CONDENSATE DRAIN VALVE AND PIPING IS NOT SHOWN IN PLAN VIEW NOR SHOWN IN OPTIMUM POSITION IN SECTIONS. ORIENT TO AVOID INTERFERENCE WITH OTHER PIPING, EQUIPMENT, AND ACCESS.
 - 75mm Ø SS BRANCH WYE.
 - 20mm Ø SCH 40 SS NIPPLE, MNPT, LENGTH TO SUIT.
 - 20mm Ø SCH 40 SS 90° ELBOW, MNPT.
 - 20mm SS MNPT FULL PORT BALL VALVE.
 - SCH 40 SS HOSE BARB FITTING, 20mm MNPT x 20mm HOSE.
 - 75mm Ø SS CAP.
 - 20mm Ø SS WELD-O-LET, CENTERED ON SS CAP.
 - FLEXIBLE COUPLING SUPPLIED WITH BLOWER.
 - INSULATE ALL SCOUR PIPING. ONLY A PORTION OF PIPE INSULATION AND CLADDING HAS BEEN SHOWN FOR CLARITY.
 - ORIENT PNEUMATIC VALVE ACTUATOR TO AVOID INTERFERENCES AND MAINTAIN ACCESS ROUTES. SUPPORT ACTUATOR AS REQUIRED.
 - 150mm THICK CONCRETE HOUSEKEEPING PAD.
 - 9.5L (2.5 GAL) WHITE HIGH-DENSITY HEAVY DUTY POLYETHYLENE POURING PAIL C/W SWIVEL HANDLE, NALGENE 7002-0025 OR EQUAL.
 - REFER TO DWG P402-5 FOR VENT PIPING DETAILS.

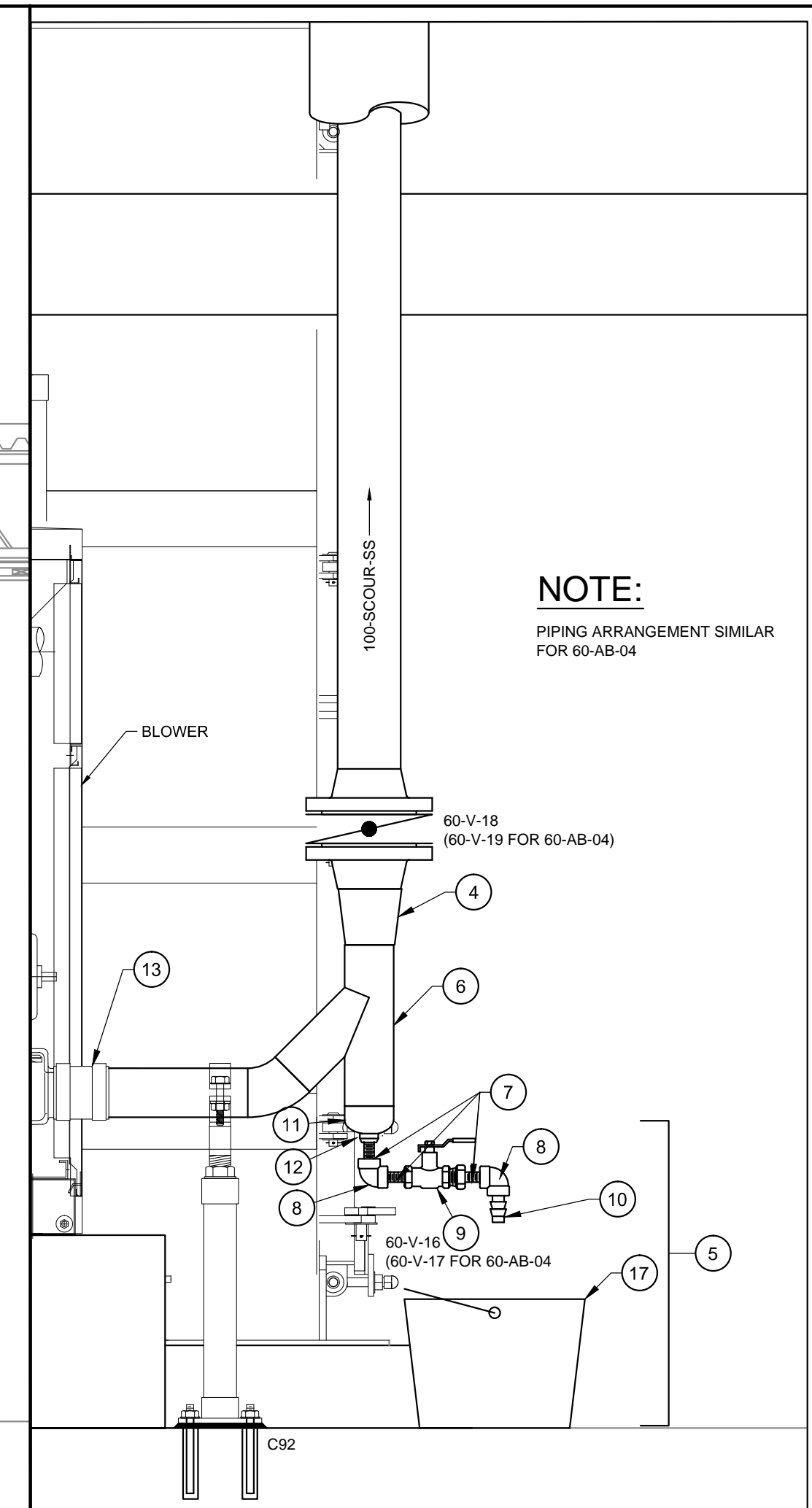
1 PARTIAL PLAN
P402-3 MEMBRANE AIR SCOUR SYSTEM

1:20



A SECTION
P402-3 MEMBRANE TANK AND SCOUR SYSTEM PIPING

1:20



1 DETAIL - SCOUR BLOWER
CONDENSATE DRAIN (60-AB-03)

1:10

No.	Issue	Date
1	ISSUED FOR TENDER	2013-APR-10
2	RELEASED FOR CONSTRUCTION	2013-JUN-27

No.	Revision	Ckd. By	Date

PERMIT OF PRACTICE EXP SERVICES INC.	
Signature	<i>[Signature]</i>
Date	2013/JUNE/27
PERMIT NUMBER: P483 NT/NU Association of Professional Engineers and Geoscientists	

RELEASED FOR CONSTRUCTION

	Const. North
	Drawn By: PD/ARL
	Dwg. Standards Ckd. By: PD
	Designed By: DFB
Date Printed	Dwg. Design Ckd. By: SAO

exp Services Inc.
t: +1.613.688.1899 | f: +1.613.225.7330
2650 Queensview Drive, Unit 100
Ottawa, ON K2B 8H6
CANADA
www.exp.com

• BUILDINGS • EARTH & ENVIRONMENT • ENERGY •
• INDUSTRIAL • INFRASTRUCTURE • SUSTAINABILITY •

Project Title	
WASTE WATER TREATMENT PLANT UPGRADE PANGNIRTUNG, NU	
Dwg. Title	
MEMBRANE TANK SCOUR SYSTEM PLAN & SECTIONS	
Project No. OTT-00204430-A0	
Dwg. No. P402-7	Rev. No. 0
Scale 1:25 This drawing is not to be scaled	