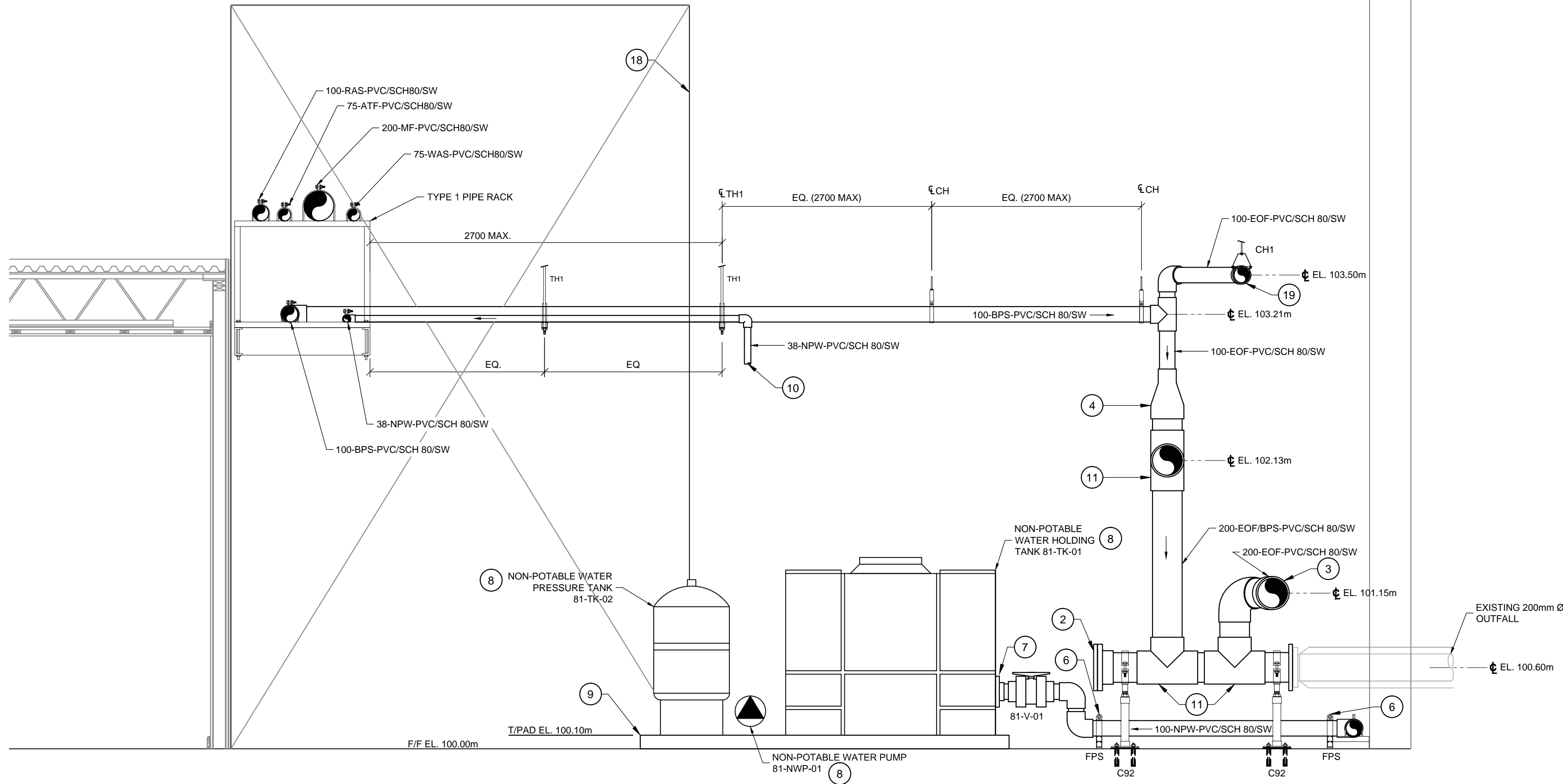


DATE PLOTTED: 2013-06-27 10:45:30 AM C:\Users\jbliss\Documents\2013\WWTU\WWTU-00204430-A0.dwg

DATE PLOTTED: 2013-06-27 10:45:30 AM C:\Users\jbliss\Documents\2013\WWTU\WWTU-00204430-A0.dwg



A SECTION

P402-3

1:25

KEYNOTES:

- OWNER-SUPPLIED EQUIPMENT. INSTALL IN ACCORDANCE WITH MANUFACTURER'S GUIDELINES.
- 200mm Ø SCH 80 PVC BLIND FLANGE.
- 200mm Ø SCH 80 PVC 45° ELBOW.
- 200 x 100 SCH 80 PVC CONCENTRIC REDUCER.
- 150mm Ø SCH 80 PVC 45° ELBOW.
- 41mm GALVANIZED U-CHANNEL AND PIPE CLAMP TO SUIT. SECURE TO CONCRETE FLOOR WITH ADHESIVE ANCHOR SYSTEM. 2700mm MAXIMUM SPACING BETWEEN SUPPORTS.
- SCH 80 PVC BULK HEAD FITTING C/W RUBBER GASKET, 100mm FNPT. USE EXISTING TANK PENETRATION IF POSSIBLE. INSTALL AS LOW AS POSSIBLE ON TANK.
- RELOCATE EXISTING HOLDING TANK, PRESSURE TANK AND PUMP FOR NPW SYSTEM. RE-USE ALL PIPING FROM HOLDING TANK TO PUMP AND PUMP TO PRESSURE TANK.
- CONCRETE HOUSEKEEPING PAD SIZED TO SUIT. PROVIDE MIN. 100mm CLEAR AROUND ALL TANKS/EQUIPMENT IN ALL DIRECTIONS.
- FIELD ROUTE 38-NPW-PVC FROM NON-POTABLE WATER PUMP. PROVIDE PIPE SUPPORTS TO SUIT WITH MAX. HORIZONTAL SPACING OF 1600mm. SUPPORT AT ALL ELBOWS AND TEES.
- 200mm Ø SCH 80 PVC TEE.
- ORIENT PNEUMATIC VALVE ACTUATOR TO AVOID INTERFERENCES AND MAINTAIN ACCESS ROUTES. SUPPORT ACTUATOR AS REQUIRED.
- FERNCO COUPLING CONNECTION.
- PVC PLAIN END x FLANGE PIPE SPOOL CONNECTION TO UV SYSTEM.
- EQUIPMENT PAD PER TYPICAL DETAIL HEIGHT TO SUIT.
- INSTALL SUPPLEMENTARY FABRICATED UV CHANNEL SUPPORTS. CONFIRM EXACT DIMENSIONS BEFORE FABRICATING THE SUPPORTS. FASTEN TO EQUIPMENT PAD WITH 10mm Ø ADHESIVE ANCHORS. SEE UV CHANNEL SUPPORT DETAIL ON DRAWING P403-1.
- SECURE TO FLOOR SLAB WITH SS ADHESIVE ANCHORS C/W WASHERS, LOCKWASHERS AND NUTS. SIZE AND ARRANGEMENT OF ANCHORS TO BE DETERMINED FROM MANUFACTURER'S SHOP DRAWINGS. SHIM AND GROUT AS REQUIRED TO SET UNIT LEVEL.
- APPROXIMATE OPENING BETWEEN EXISTING AND NEW BUILDING AREAS SHOWN FOR REFERENCE ONLY. REFER TO STRUCTURAL DRAWINGS FOR MORE DETAILS.
- PROVIDE 100mm Ø SCH 80 PVC 45° ELBOW AND PIPE TO RE-ALIGN EXISTING 100-EOF-PVC AS SHOWN.
- 200mm x 150mm SCH 80 PVC REDUCING TEE.
- 150mm Ø SCH 80 PVC TEE.
- 150mm x 100mm SCH 80 PVC REDUCING BUSHING.
- HOLD DOWN LUG SUPPLIED WITH TANK. SECURE TANK TO CONCRETE FLOOR WITH AN ADHESIVE ANCHOR SYSTEM. TYP. 4 LOCATIONS.
- SECURE CLEVIS HANGER ROD TO BUILDING PURLIN WITH GALVANIZED CLAMP.

NOTES:

- ITEMS IN GREY ARE EXISTING.
- COORDINATE INSULATIONS WITH ALL EXISTING PIPING AND EQUIPMENT. NOTIFY ENGINEER OF ANY INTERFERENCES.
- NOT ALL PIPING SHOWN FOR CLARITY.
- TYPE1 PIPE RACK NOT SHOWN THIS VIEW FOR CLARITY.

B SECTION

P402-3

EFFLUENT, NON-POTABLE WATER SUPPLY SYSTEM, AND BACKPULSE TANK

1:25

| No. | Issue | Date |
|-----|---------------------------|-------------|
| 1 | ISSUED FOR TENDER | 2013-APR-10 |
| 2 | RELEASED FOR CONSTRUCTION | 2013-JUN-27 |
| | | |
| | | |



| No. | Revision | Ckd. By | Date |
|-----|----------|---------|------|
| | | | |
| | | | |


PERMIT OF PRACTICE
EXP. SERVICES INC.

Signature: 

Date: 2013/JUNE/27

PERMIT NUMBER: P483
NT/NU Association of Professional
Engineers and Geoscientists

RELEASED FOR CONSTRUCTION

| | |
|---|----------------------------|
|  | Const. North |
| | Drawn By: PD/ARL |
| | Dwg. Standards Ckd. By: PD |
| | Designed By: DFB |
| Date Printed | Dwg. Design Ckd. By: SAO |

exp Services Inc.

t: +1.613.688.1899 | f: +1.613.225.7330
2650 Queensview Drive, Unit 100
Ottawa, ON K2B 8H6
CANADA

www.exp.com



• BUILDINGS • EARTH & ENVIRONMENT • ENERGY •
• INDUSTRIAL • INFRASTRUCTURE • SUSTAINABILITY •

| | |
|---|------------|
| Project Title | |
| WASTE WATER TREATMENT PLANT UPGRADE PANGNIRTUNG, NU | |
| Dwg. Title | |
| PARTIAL PLAN & SECTION | |
| Project No. OTT-00204430-A0 | |
| Dwg. No. P402-9 | Rev. No. 0 |
| Scale AS SHOWN This drawing is not to be scaled | |