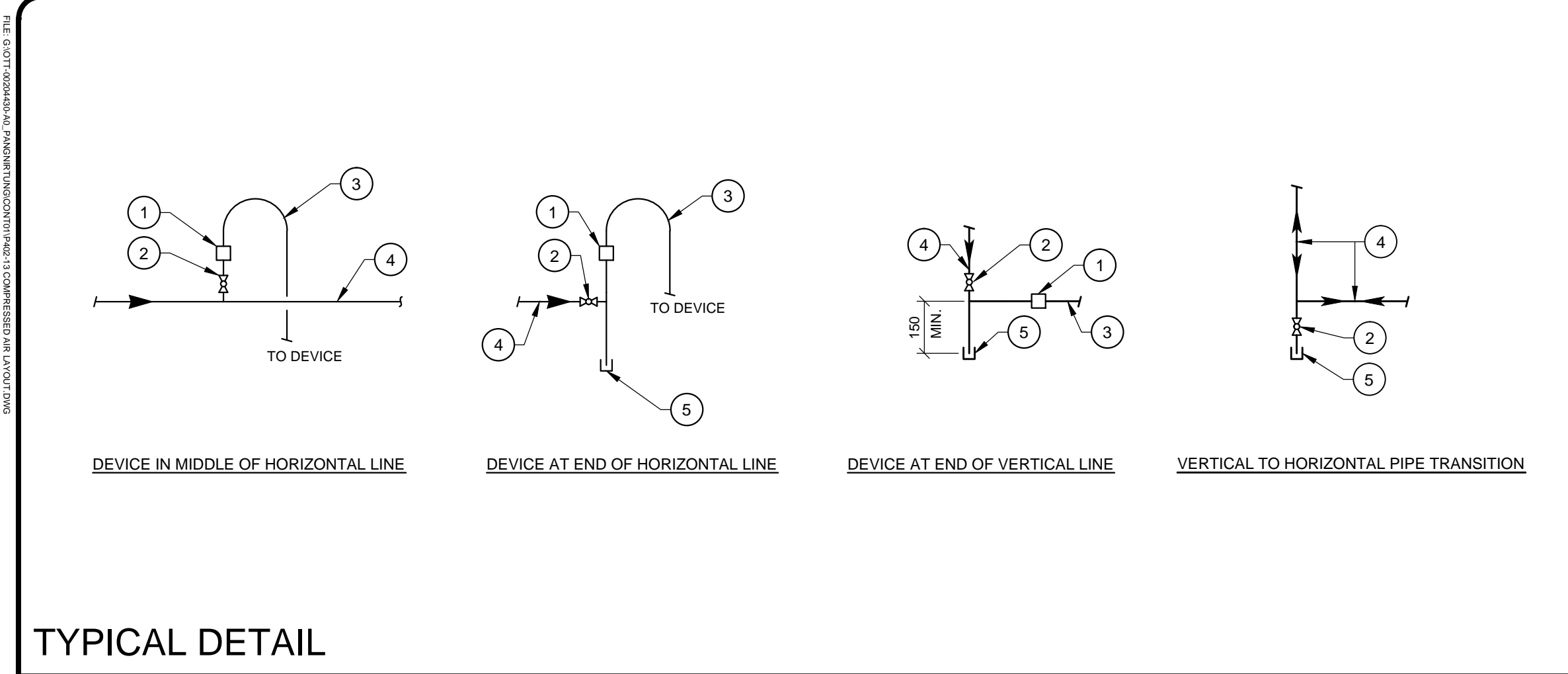
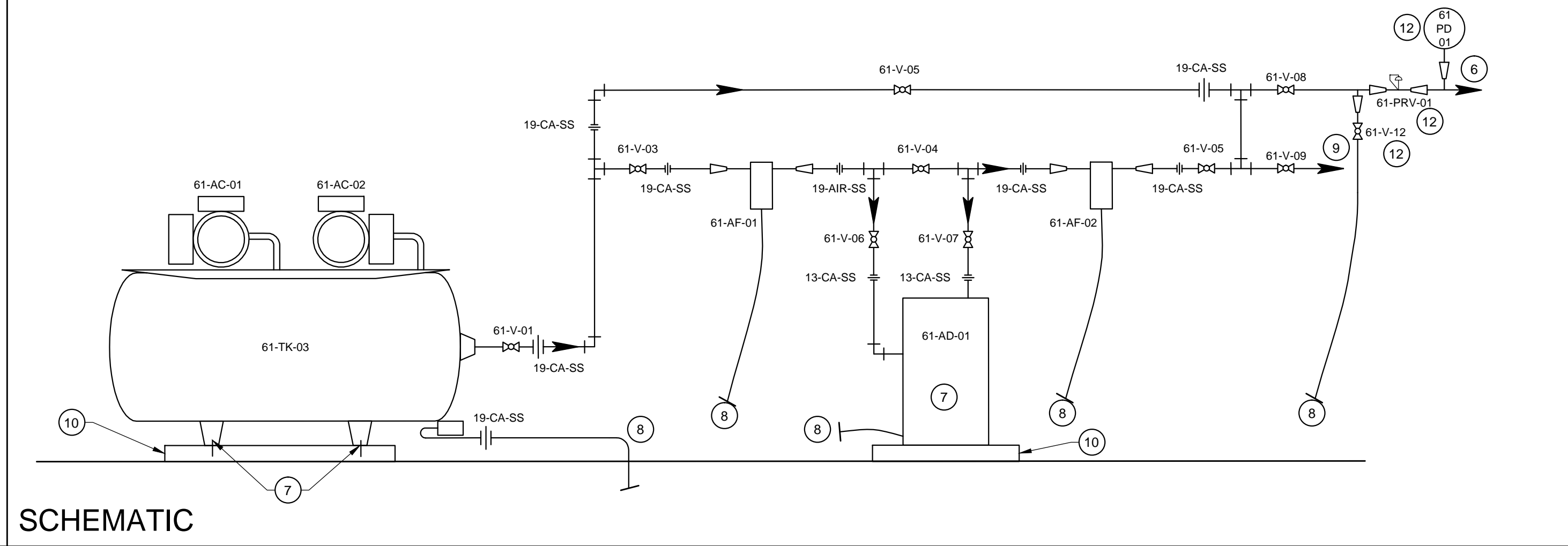


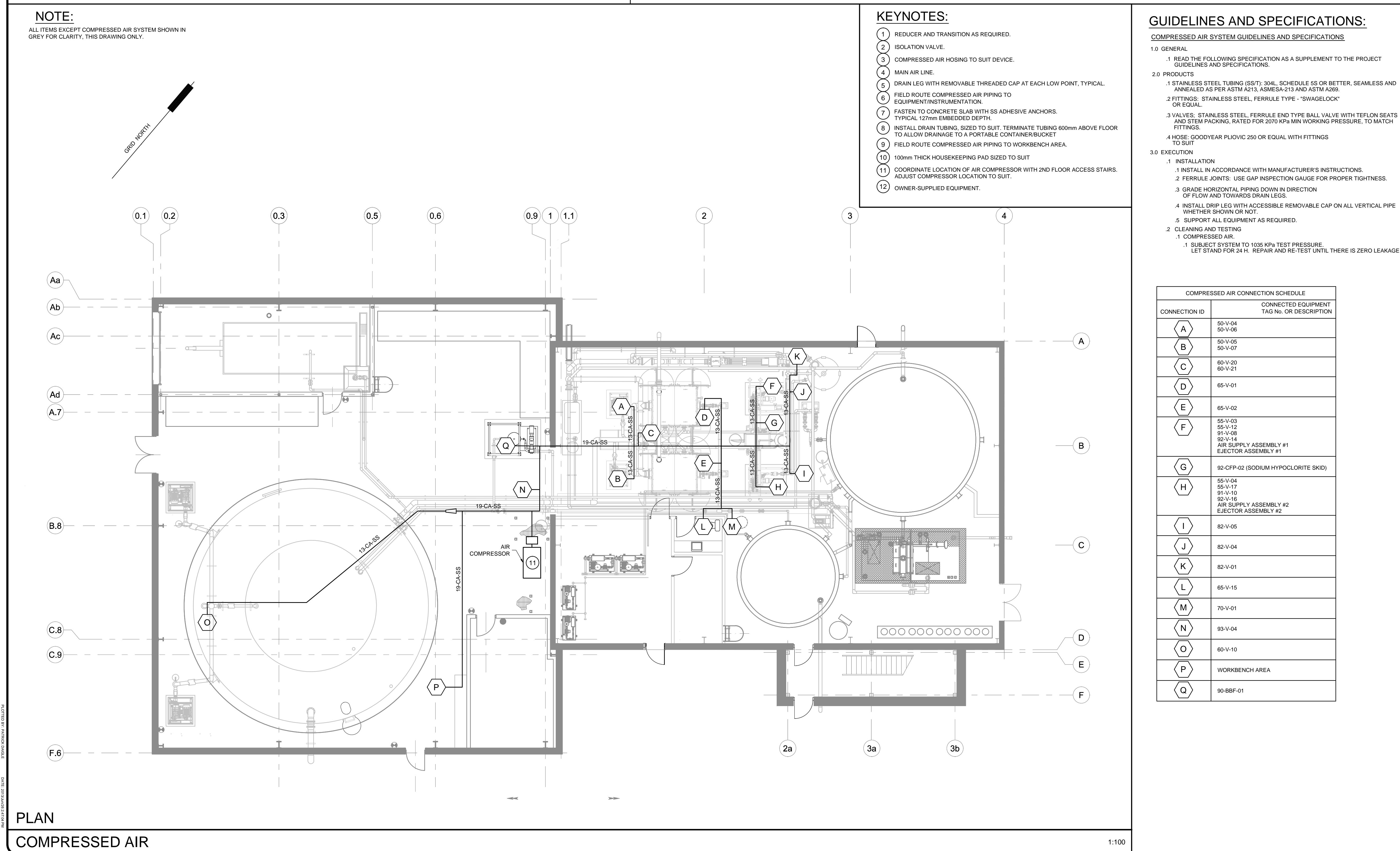
DATE: 2013-06-27 BY: S.G. BLISS FOR EXP SERVICES INC. PROJECT: WASTE WATER TREATMENT PLANT UPGRADE, PANGNIRTUNG, NU



TYPICAL DETAIL  
COMPRESSED AIR CONNECTIONS



SCHEMATIC  
COMPRESSED AIR SUPPLY SYSTEM (55-AC-01/02)



PLAN  
COMPRESSED AIR

KEYNOTES:

- REDUCER AND TRANSITION AS REQUIRED.
- ISOLATION VALVE.
- COMPRESSED AIR HOSE TO SUIT DEVICE.
- MAIN AIR LINE.
- DRAIN LEG WITH REMOVABLE THREADED CAP AT EACH LOW POINT, TYPICAL.
- FIELD ROUTE COMPRESSED AIR PIPING TO EQUIPMENT/INSTRUMENTATION.
- FASTEN TO CONCRETE SLAB WITH SS ADHESIVE ANCHORS. TYPICAL 127mm EMBEDDED DEPTH.
- INSTALL DRAIN TUBING, SIZED TO SUIT. TERMINATE TUBING 600mm ABOVE FLOOR TO ALLOW DRAINAGE TO A PORTABLE CONTAINER/BUCKET.
- FIELD ROUTE COMPRESSED AIR PIPING TO WORKBENCH AREA.
- 100mm THICK HOUSEKEEPING PAD SIZED TO SUIT.
- COORDINATE LOCATION OF AIR COMPRESSOR WITH 2ND FLOOR ACCESS STAIRS. ADJUST COMPRESSOR LOCATION TO SUIT.
- OWNER-SUPPLIED EQUIPMENT.

GUIDELINES AND SPECIFICATIONS:

- COMPRESSED AIR SYSTEM GUIDELINES AND SPECIFICATIONS**
- 1.0 GENERAL
- READ THE FOLLOWING SPECIFICATION AS A SUPPLEMENT TO THE PROJECT GUIDELINES AND SPECIFICATIONS.
- 2.0 PRODUCTS
- STAINLESS STEEL TUBING (SS/T): 304L, SCHEDULE SS OR BETTER, SEAMLESS AND ANNEALED AS PER ASTM A213, ASME SA-213 AND ASTM A269.
  - FITTINGS: STAINLESS STEEL, FERRULE TYPE - "SWAGelok" OR EQUAL.
  - VALVES: STAINLESS STEEL, FERRULE END TYPE BALL VALVE WITH TEFLON SEATS AND STEM PACKING, RATED FOR 2070 KPa MIN WORKING PRESSURE, TO MATCH FITTINGS.
  - HOSE: GOODYEAR PLOVIC 250 OR EQUAL WITH FITTINGS TO SUIT.
- 3.0 EXECUTION
- INSTALLATION
    - INSTALL IN ACCORDANCE WITH MANUFACTURER'S INSTRUCTIONS.
    - FERRULE JOINTS: USE GAP INSPECTION GAUGE FOR PROPER TIGHTNESS.
    - GRADE HORIZONTAL PIPING DOWN IN DIRECTION OF FLOW AND TOWARDS DRAIN LEGS.
    - INSTALL DRIP LEG WITH ACCESSIBLE REMOVABLE CAP ON ALL VERTICAL PIPE WHETHER SHOWN OR NOT.
    - SUPPORT ALL EQUIPMENT AS REQUIRED.
  - CLEANING AND TESTING
    - SUBJECT SYSTEM TO 1035 KPa TEST PRESSURE. LET STAND FOR 24 H. REPAIR AND RE-TEST UNTIL THERE IS ZERO LEAKAGE.

COMPRESSED AIR CONNECTION SCHEDULE	
CONNECTION ID	CONNECTED EQUIPMENT TAG No. OR DESCRIPTION
A	50-V-04 50-V-06
B	50-V-05 50-V-07
C	60-V-20 60-V-21
D	65-V-01
E	65-V-02
F	55-V-03 55-V-12 91-V-08 92-V-14 AIR SUPPLY ASSEMBLY #1 EJECTOR ASSEMBLY #1
G	92-CFP-02 (SODIUM HYPOCHLORITE SKID)
H	55-V-04 55-V-17 91-V-10 92-V-16 AIR SUPPLY ASSEMBLY #2 EJECTOR ASSEMBLY #2
I	82-V-05
J	82-V-04
K	82-V-01
L	65-V-15
M	70-V-01
N	93-V-04
O	60-V-10
P	WORKBENCH AREA
Q	90-BBF-01

No.	Issue	Date
1	60% REVIEW SUBMISSION	2013-MAR-08
2	ISSUED FOR TENDER	2013-APR-10
3	RELEASED FOR CONSTRUCTION	2013-JUN-27



No.	Revision	Ckd. By	Date

PERMIT OF PRACTICE  
EXP SERVICES INC.  
Signature: *S.G. Bliss*  
Date: 2013/JUNE/27  
PERMIT NUMBER: P483  
NT/NU Association of Professional Engineers and Geoscientists

RELEASED FOR CONSTRUCTION

Const. North

Drawn By: PD  
Dwg. Standards: PD  
Designed By: DFB  
Dwg. Design Ckd. By: SAO

Date Printed

exp Services Inc.  
t: +1.613.688.1899 | f: +1.613.225.7330  
2650 Queensview Drive, Unit 100  
Ottawa, ON K2B 8H6  
CANADA  
www.exp.com

exp.

• BUILDINGS • EARTH & ENVIRONMENT • ENERGY •  
• INDUSTRIAL • INFRASTRUCTURE • SUSTAINABILITY •

Project Title  
**WASTE WATER TREATMENT PLANT UPGRADE PANGNIRTUNG, NU**

Dwg. Title  
**COMPRESSED AIR SYSTEM PLAN, SCHEMATIC, DETAIL, GUIDELINES AND SPECIFICATIONS**

Project No. **OTT-00204430-A0**  
Dwg. No. **P402-13** Rev. No. **0**  
Scale **AS SHOWN**  
This drawing is not to be scaled